

- NOTES**
1. USE SEWER JOINT COMPOUND FOR ALL PIPE JOINTS EXCEPT AS NOTED.
 2. USE "D & D" SAFETY AND NOISELESS MANHOLE FRAMES AND COVERS — NOTE — THE WORD "COUNTY" SHALL BE OMITTED FROM ALL COVERS TO BE INSTALLED WITHIN THE CITY OF COMPTON
 3. USE STANDARD STRENGTH PIPE EXCEPT AS NOTED
 4. TRENCH NOT TO BE RESURFACED EXCEPT AS NOTED
 5. RECONNECT EXISTING HOUSE SERVICES

GLEN AVENUE DRAINAGE SYSTEM

(24)

PROFILE, ALIGNMENT AND GRADE OF
SANITARY SEWERS
 TO BE CONSTRUCTED IN
 SANITARY SEWER RIGHT OF WAY
 IN TRACT No. 759, M. B. 16, 13
 WILLOWBROOK AVENUE
 BETWEEN SLY. LINE TR. No. 3765, M. B. 41, 88 AND ROSECRANS AVE
 MONA BOULEVARD
 BETWEEN ROSECRANS AVE. AND ORIS ST.
 ALAMEDA STREET
 BETWEEN CALDWELL ST. AND OLIVE ST.
 AND IN PORTIONS OF
 WILLOWBROOK AVE - ROSECRANS AVE. ORIS ST.

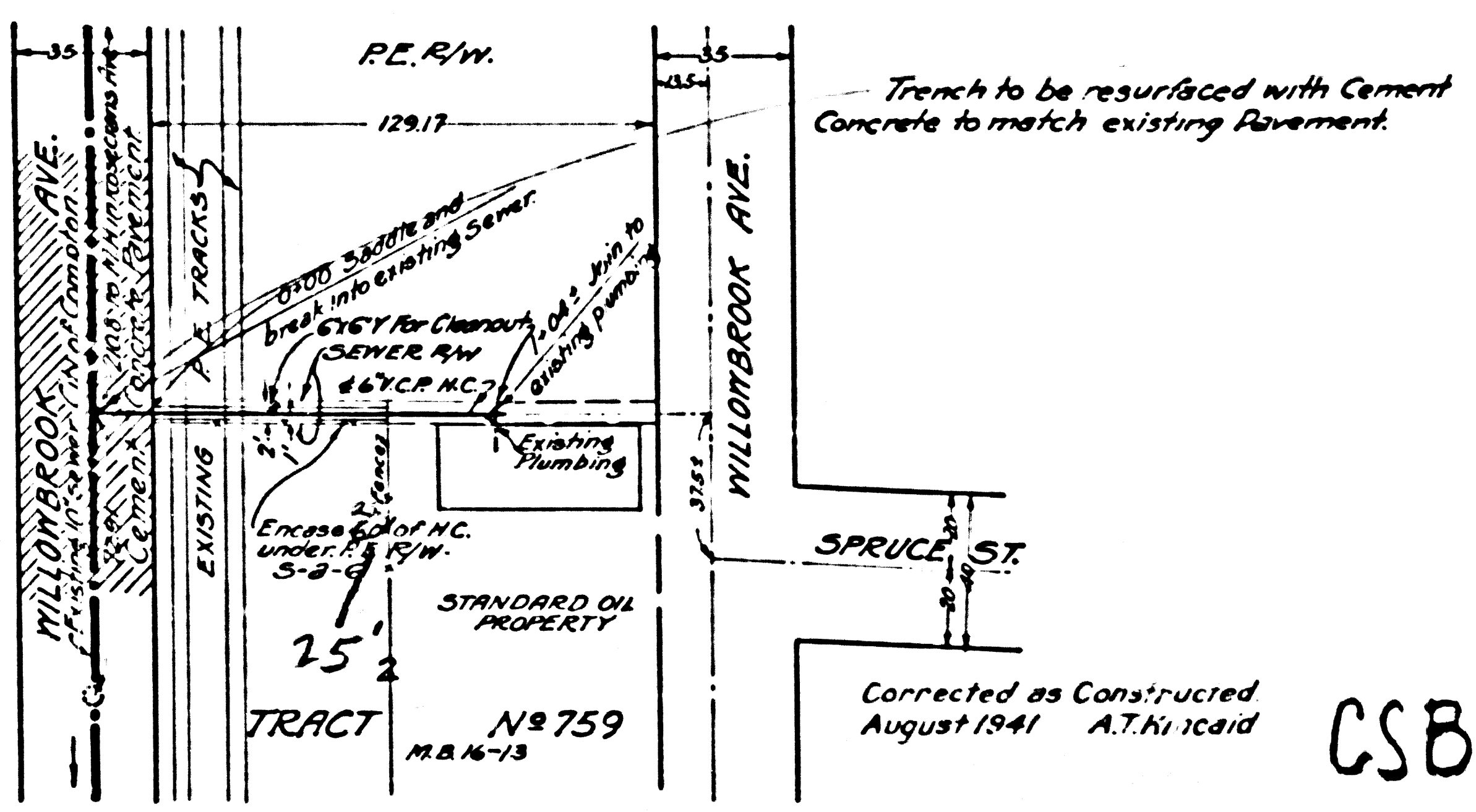
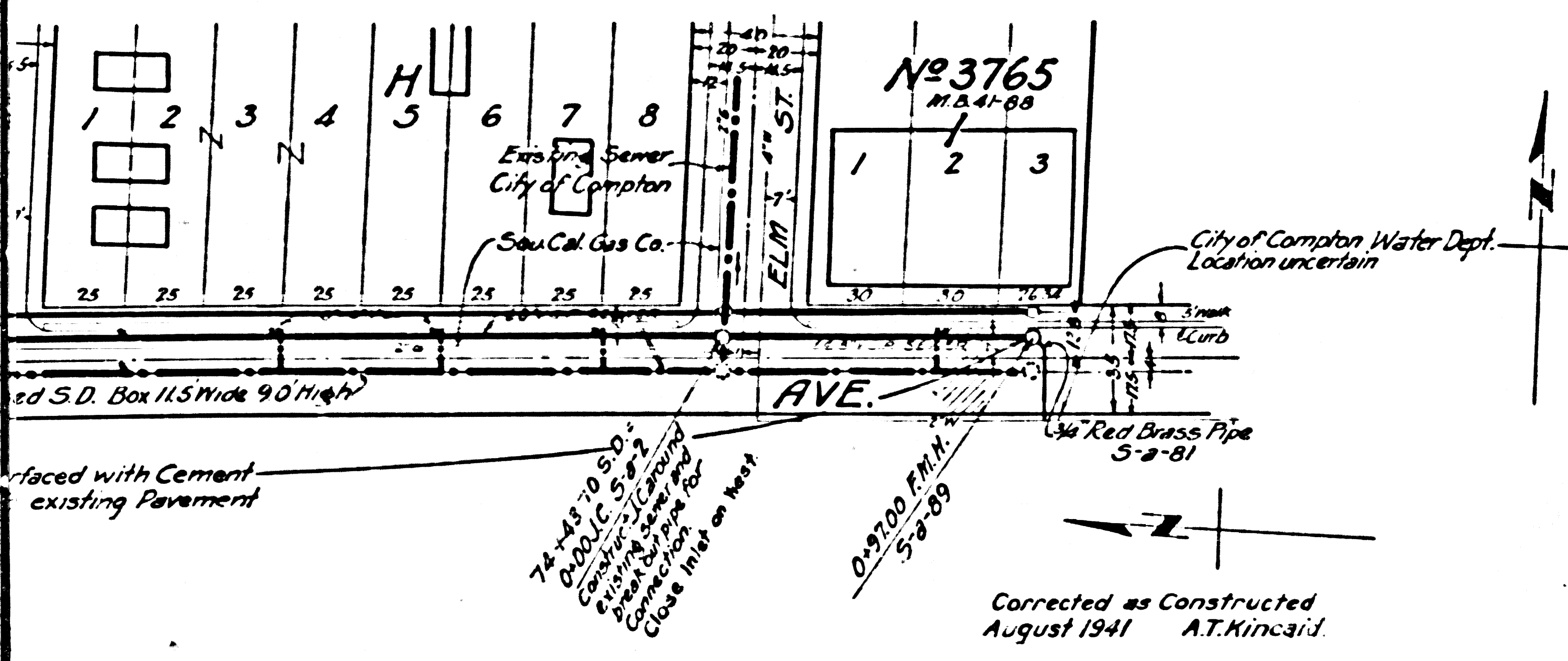
SCALE: HORIZONTAL 1" = 100' VERTICAL 1" = 10'
 SHEET 24 OF 26 SHEETS
 COUNTY OF LOS ANGELES, CALIFORNIA
 ALFRED JONES COUNTY SURVEYOR

RECOMMENDED: *[Signature]* CHIEF OF DIVISION
 APPROVED: *[Signature]* COUNTY SURVEYOR
 APPROVED: *[Signature]* COUNTY ENGINEER

FOR LEGEND
 SEE PLAN NO. 9-6-64

NOTE:
 GRADES TO WHICH THIS IMPROVEMENT IS TO BE CONSTRUCTED ARE SHOWN ON PLANS AND PROFILES. GRADE POINTS FOR TOP OF CURB, CENTER LINE OF STREET OR CENTER LINE OF ALLEY ARE SHOWN BY CIRCLES ON PROFILES. AT ALL POINTS BETWEEN DESIGNATED POINTS THE GRADE SHALL BE ESTABLISHED SO AS TO CONFORM TO A STRAIGHT LINE DRAWN BETWEEN SAID DESIGNATED POINTS. ELEVATIONS ARE IN FEET ABOVE U. S. S. DATUM OR MEAN SEA LEVEL. UNIT PRICES FOR ADDITIONAL WORK WHICH MAY BE REQUIRED BUT WHICH CANNOT BE ASCERTAINED IN ADVANCE SHALL BE SUBMITTED IN THE PROPOSAL. THIS DRAWING AND THE DATA HEREON ARE HEREBY MADE A PART OF THE SPECIFICATIONS.

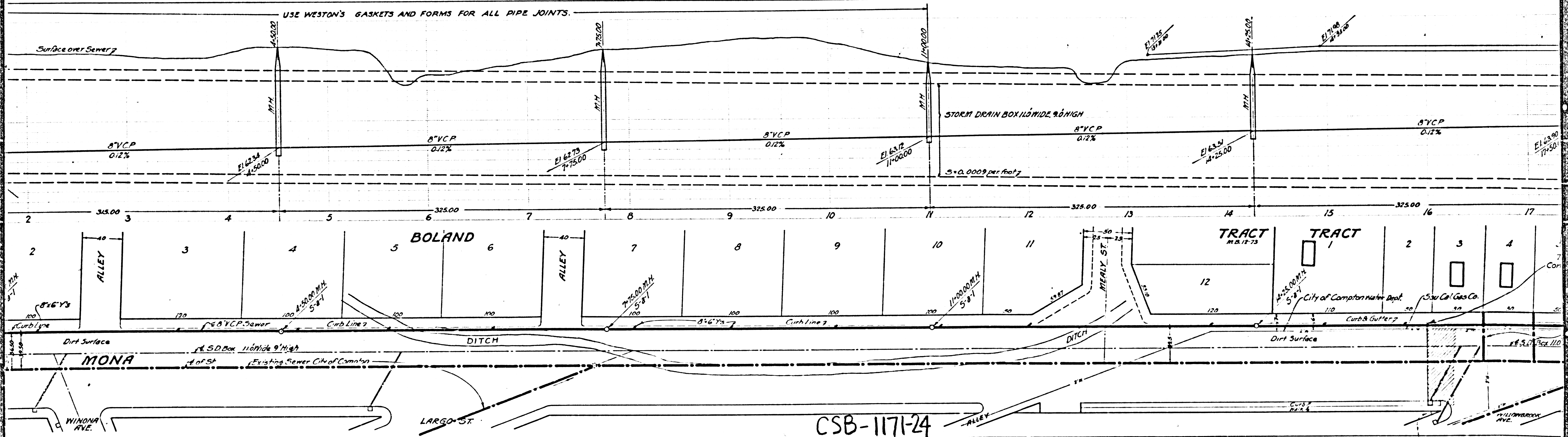
REFERENCES	DESIGNED	BEMIS	SEPT. 1935
W. S. 26	A. B.	BLACKMER	OCT. 1935
A. B.		KUENZEL	OCT. 1935
L. B. 819-678			



CSB-1171-24
 A1 OF AG

Tim Prink
 Designed - Bemis - Sept.
 Traced - Blackmer - Oct.
 Checked - Kuenzel - "

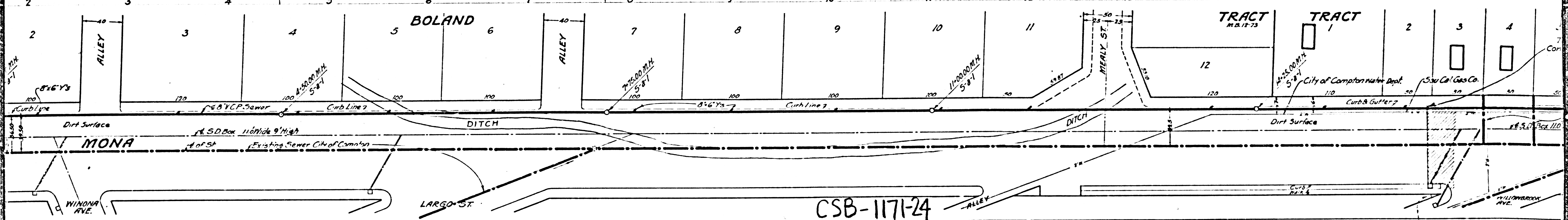
USE WESTON'S GASKETS AND FORMS FOR ALL PIPE JOINTS.

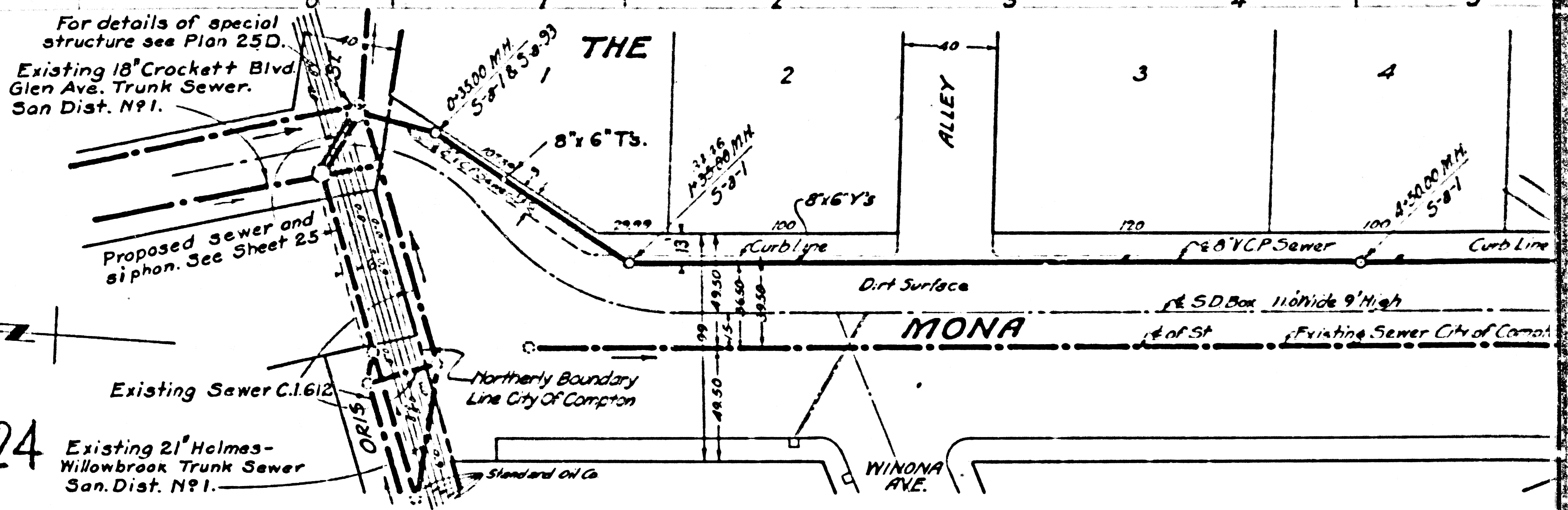
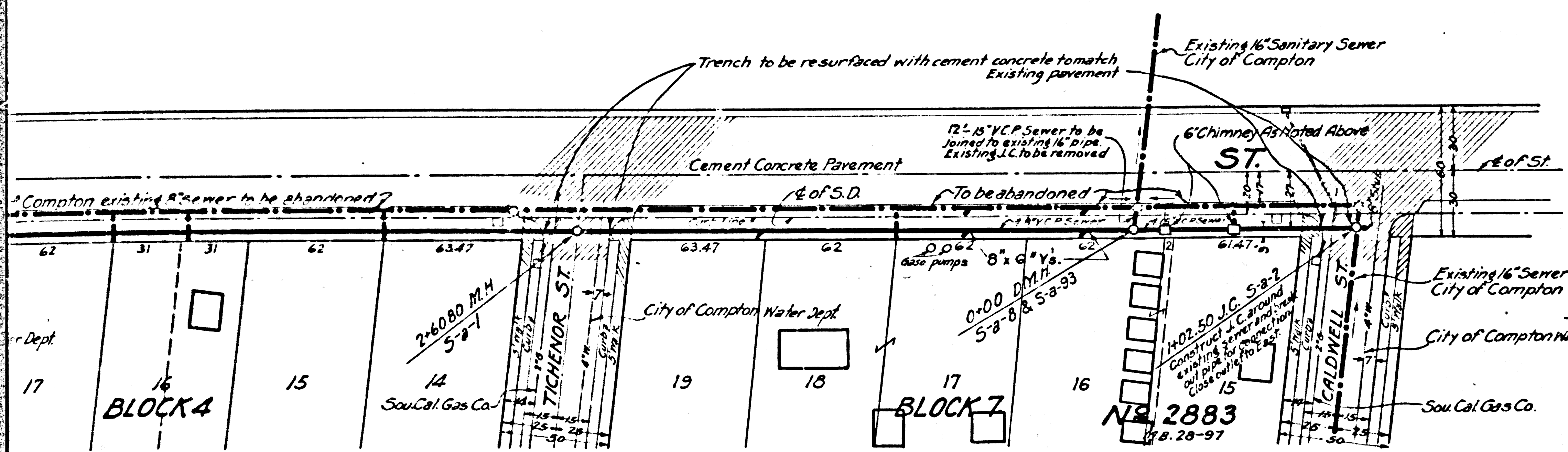
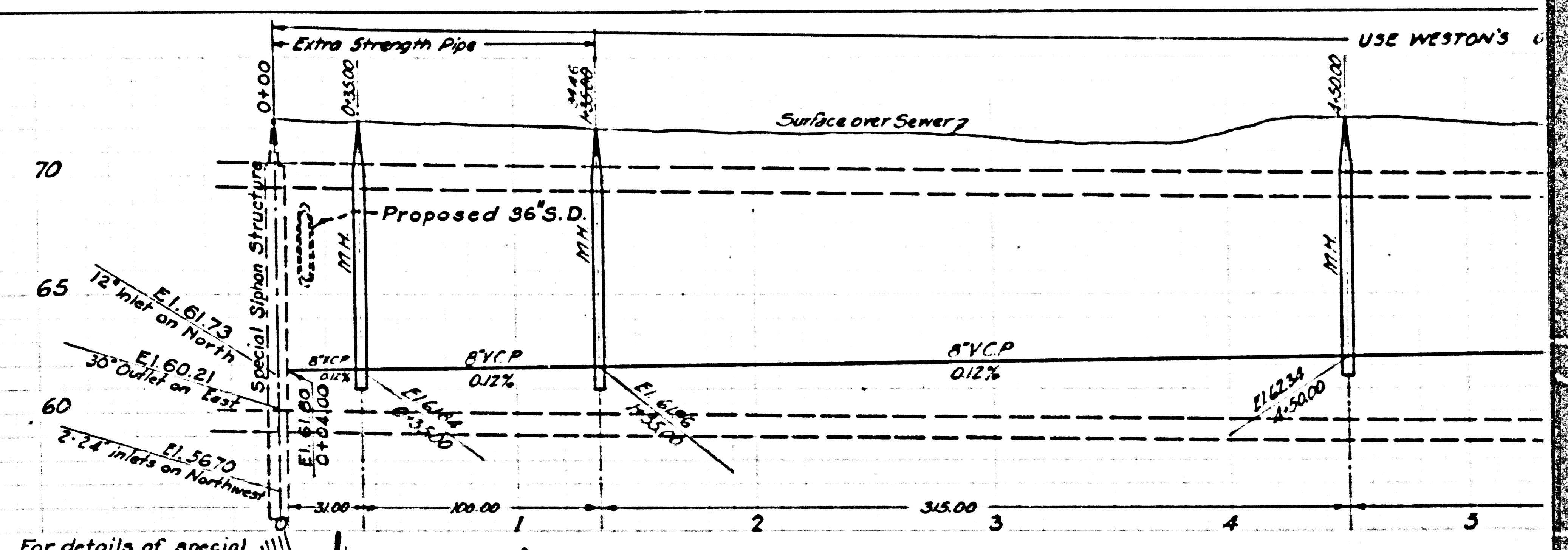
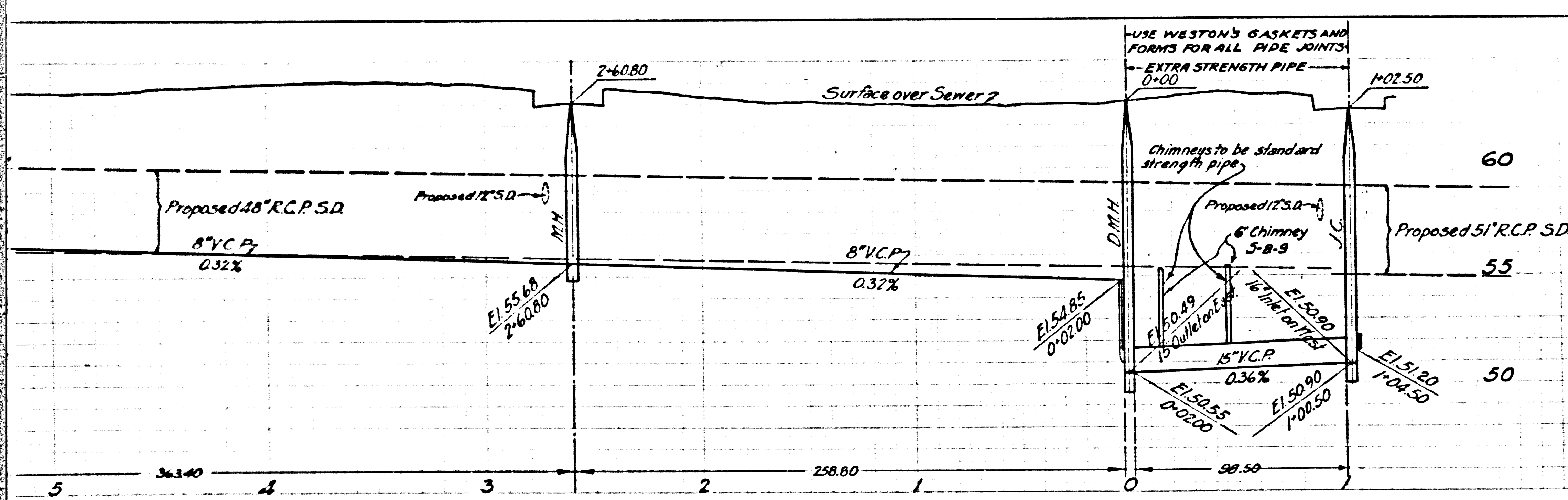


CSB-1171-24
A4 OF A6

L.S. 678 y 97

E19-30, C&G 15133-301 Storm Chart





CSB-1171-24

A50FA6

LB. 819 p.110

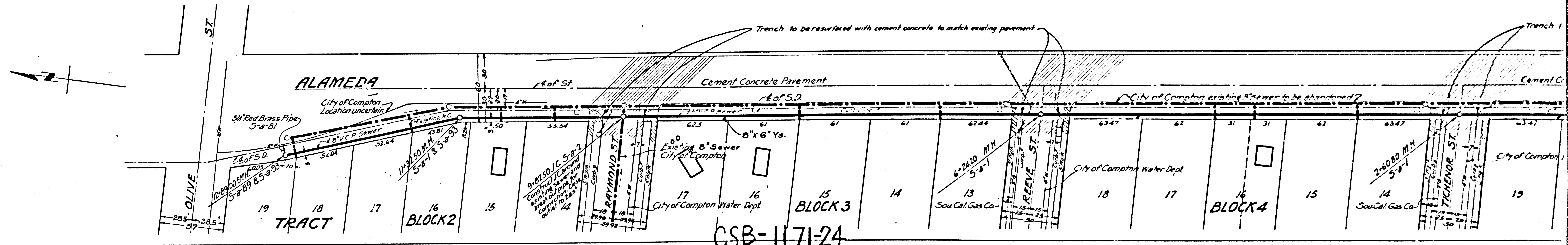
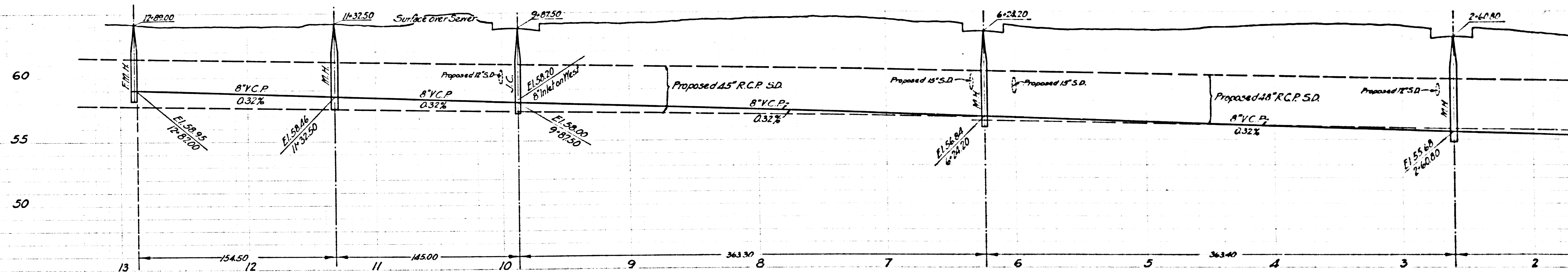
LB. 819 p.56

Trace G&B 10-7-35

CSB-1171-24

AG OF AG

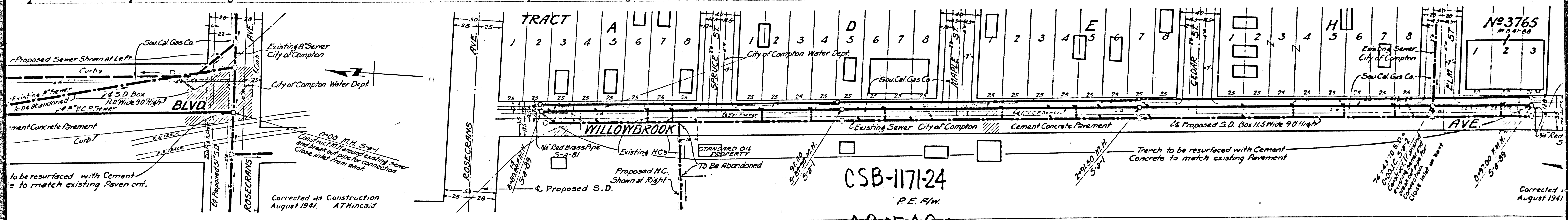
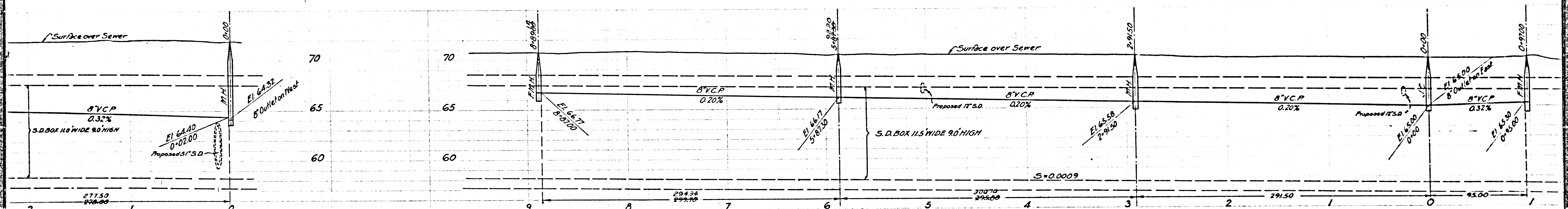
Trim Prints 7



CSB-1171-24
AG OF AG

Trim Prints 7

TOP S.H. 63.83



Proposed Sewer Shown at Left
 Existing 8" Sewer City of Compton
 City of Compton Water Dept.
 Existing 8" Sewer to be abandoned
 11.0" Wide 9' High S.D. Box
 Cement Concrete Pavement
 Curb
 0+00 M.H. S-1
 Construct M.H. around existing sewer and break out pipe for connection close inlet from east.
 Corrected as Construction August 1941. AT Mincaid

CSB-1171-24
 P.E. R/W.
 A20FAG

Corrected August 1941
 No. 3765
 M.A. 41-00
 24-11-37 S.D. 11.0" C. S. 2' 2" High
 Existing Sewer City of Compton
 Sou. Cal. Gas Co.
 Trench to be resurfaced with Cement Concrete to match existing Pavement
 0+97.00 P.M.H. S-2
 5'-8"-89

L. b. 319 F. 23

WS-26 Time 6.68

