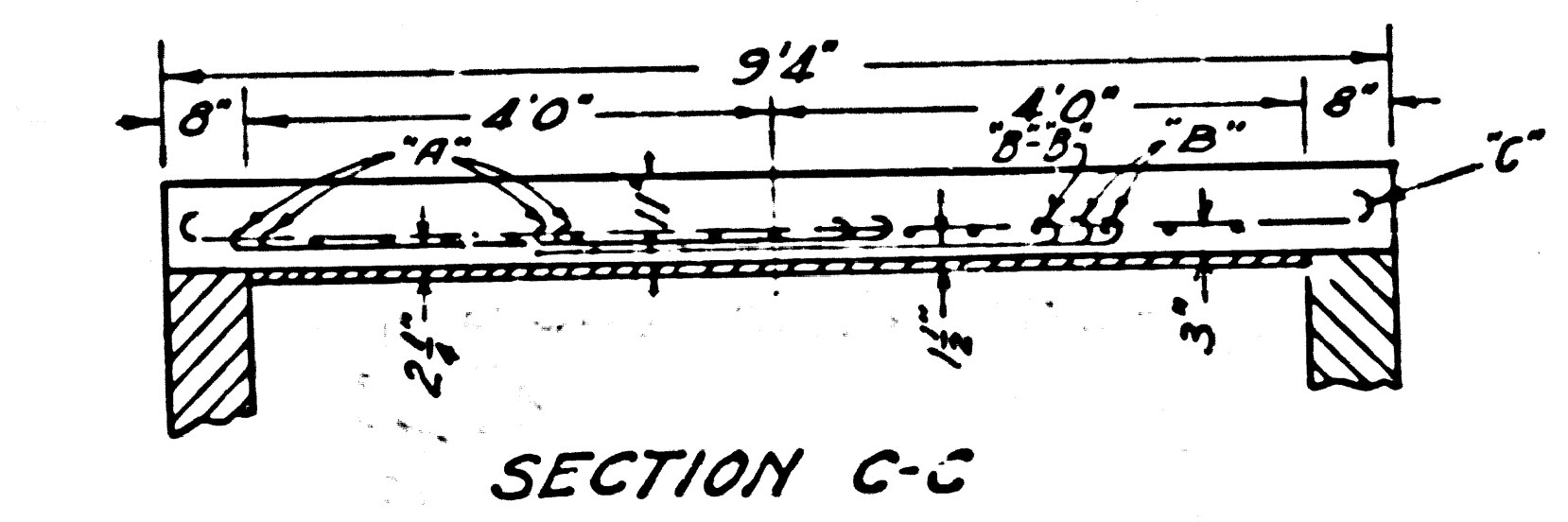
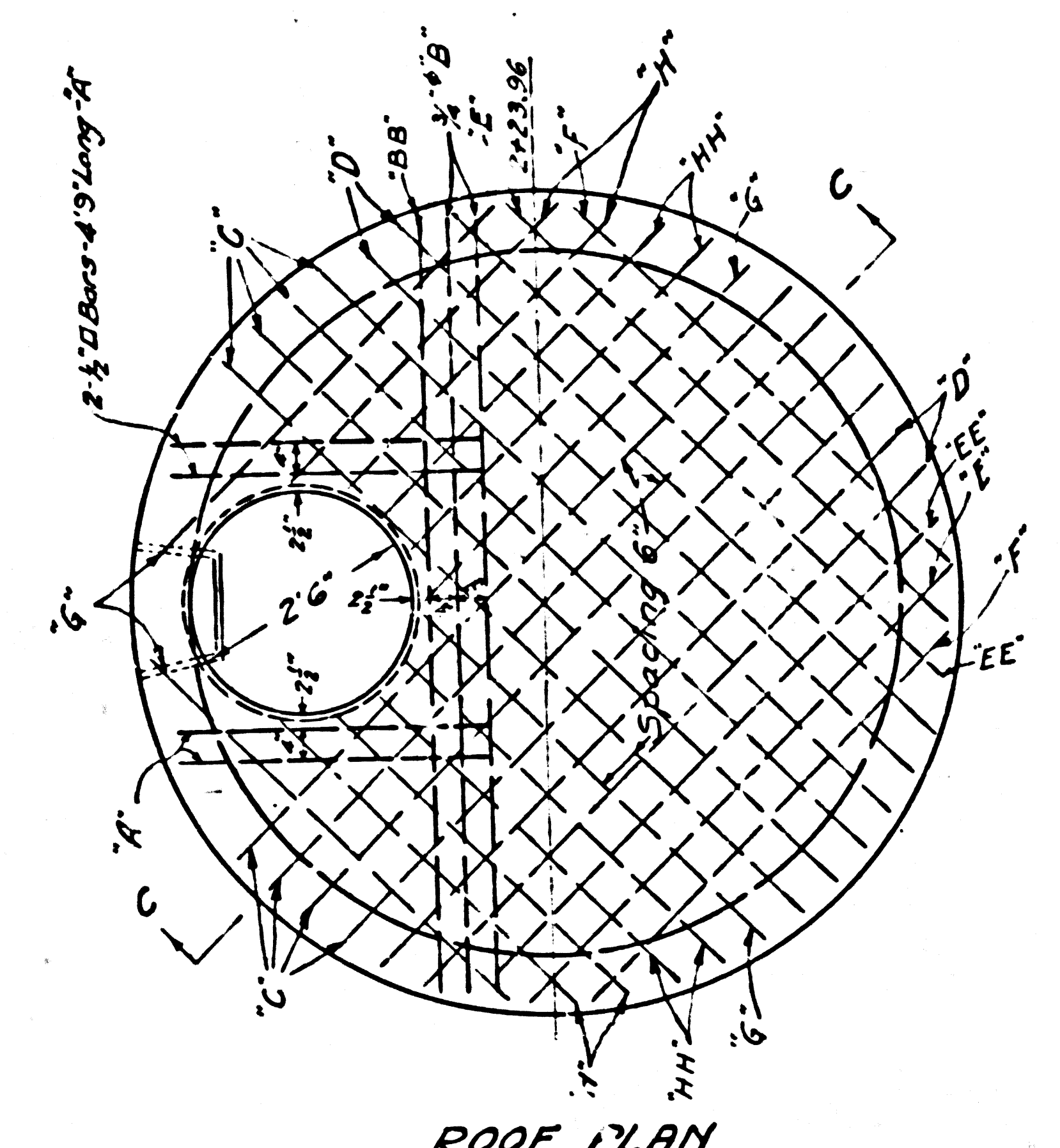
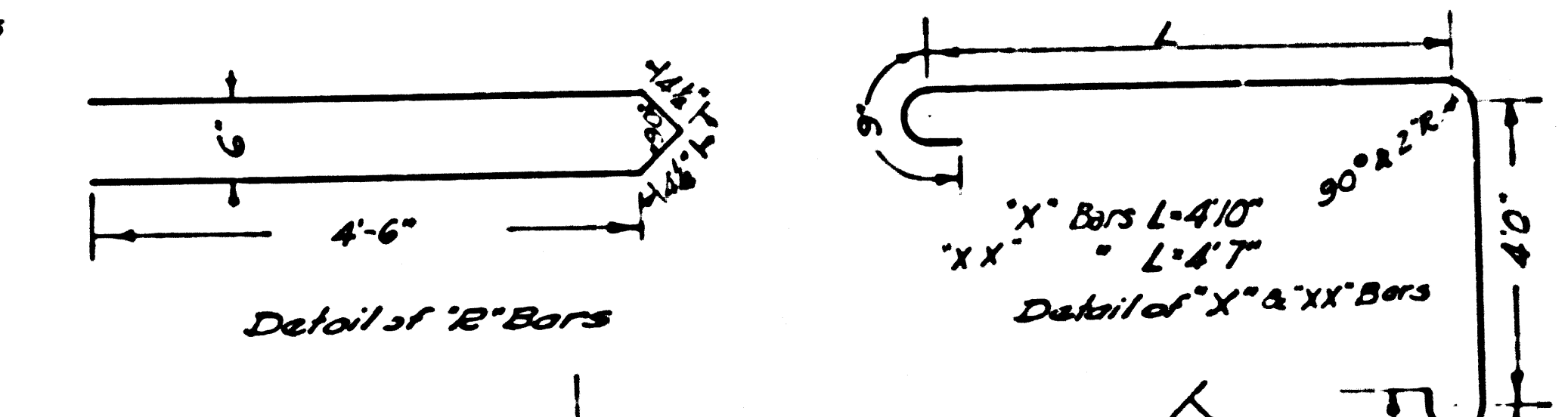


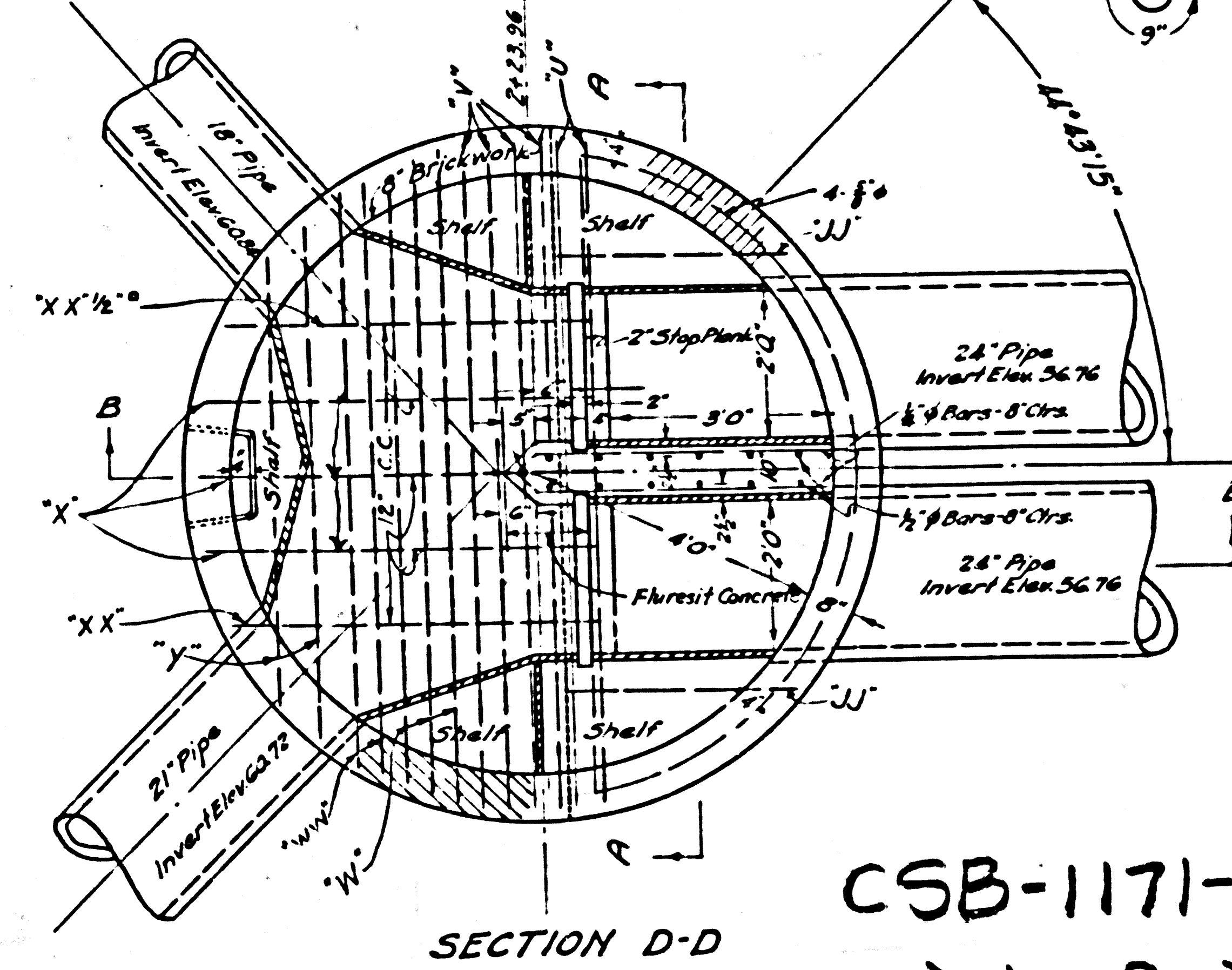
REINFORCING SCHEDULE					
No. of Bars	Type	Total Length	Size	Description	Location
4	"A"	4'9"	1/2"	Hooked Both Ends	Top Slab
2	"B"	10'4"	3/4"	"	"
1	BB	10'1"	"	"	"
8	"C"	10'0"	1/2"	"	"
4	"D"	9'7"	"	"	"
2	"E"	8'0"	"	"	"
2	EE	8'8"	"	"	"
2	"F"	6'11"	"	"	"
2	"G"	6'5"	"	"	"
2	GG	6'10"	"	"	"
4	"H"	5'5"	"	"	"
4	HH	5'9"	"	"	"
7	"S"	1'4"	1/2"	Straight	Concrete Wall
4	"L"	17'10"	3/8"	See Detail	"
14	"T"	7'2"	3/8"	Hooked Both Ends	Bottom Slab
8	"U"	10'0"	1/2"	"	"
4	"V"	10'0"	1/2"	"	"
3	"W"	5'0"	"	"	"
2	WW	8'10"	"	"	"
2	"Y"	7'1"	"	"	"
3	"X"	10'5"	1/2"	See Detail	"
2	XX	10'2"	"	"	"
2	"J"	5'4"	1/2"	Hooked both ends	"
4	JJ	3'10"	"	"	"
5	"K"	5'6"	"	"	"
1	"P"	4'0"	1/2"	Straight	Baffle Wall
10	"Q"	4'0"	1/4"	"	"
6	"R"	9'9"	"	See Detail	"
4	"M"	16'0"	1/2"	"	"
2	"N"	8'5"	"	"	"



Detail of "M" & "N" Bars
NOT TO SCALE



ROOF PLAN



SECTION D-D

SCALE: 1/2" = 1'

CSB-1171-25-B
A1 of A1

NOTES
 6" x 12" cylinders of concrete to have strength of not less than 2500 lbs per sq in at 28 days.
 Reinforcing steel to be deformed intermediate grade with a yield - A.S.T.M. specifications.
 Vitriol clay liner plate joints to be made with C.R.I. "101" Joint Compound.
 Dimensions from surface of concrete to steel are to center of bars.
 Turn 6" arch over 18" x 21" pipe in brickwork.
 Bar hooks to be made by bending bar about a pipe of diameter eight times that of bar.
 Without washed fluresit concrete to have five pounds of "fluresit" added to each bag of cement before mixing.
 All liner plates 6' wide.

Reviewed for Corrections
August 1941
A.T. Kincaid

GLEN AVENUE DRAINAGE SYSTEM
OF THE COUNTY OF LOS ANGELES, CALIF.
**HOLMES-WILLOWBROOK TRUNK SEWER
SIPHON INLET**

AT
ORIS ST. & MONA BLVD
SHEET 25 B OF 26 SHEETS

SCALE: AS NOTED
OCT. 1938
ALFRED JONES COUNTY SURVEYOR
RECOMMENDED BY [Signature] APPROVED BY [Signature]
CHIEF DEPUTY COUNTY SURVEYOR
APPROVED BY [Signature]
CLERK COUNTY SAN DIST. NO. 1

DESIGNED BY [Signature] CHECKED BY [Signature] OCT. 1938
REVISIONS [Signature] OCT. 1938