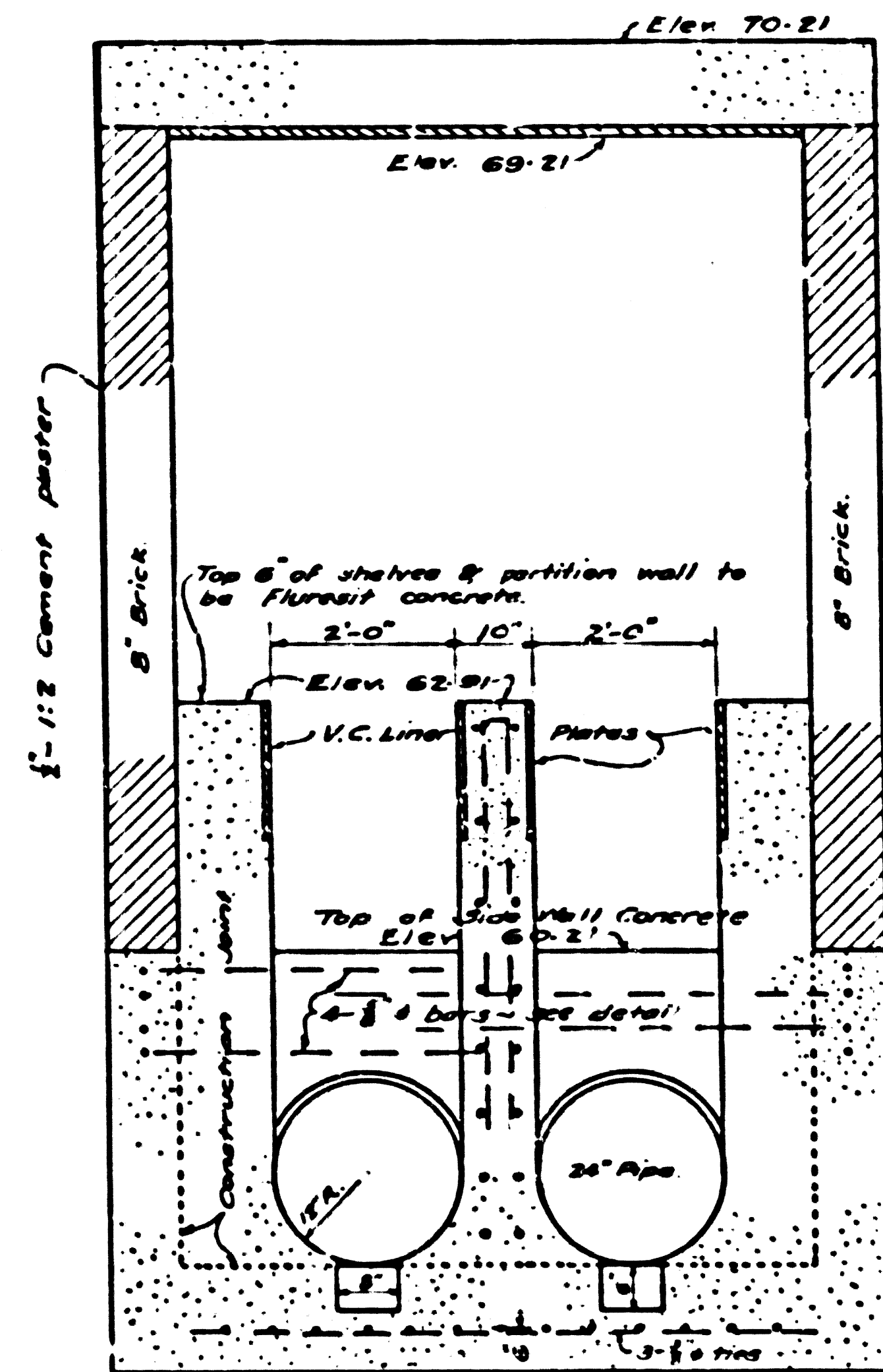
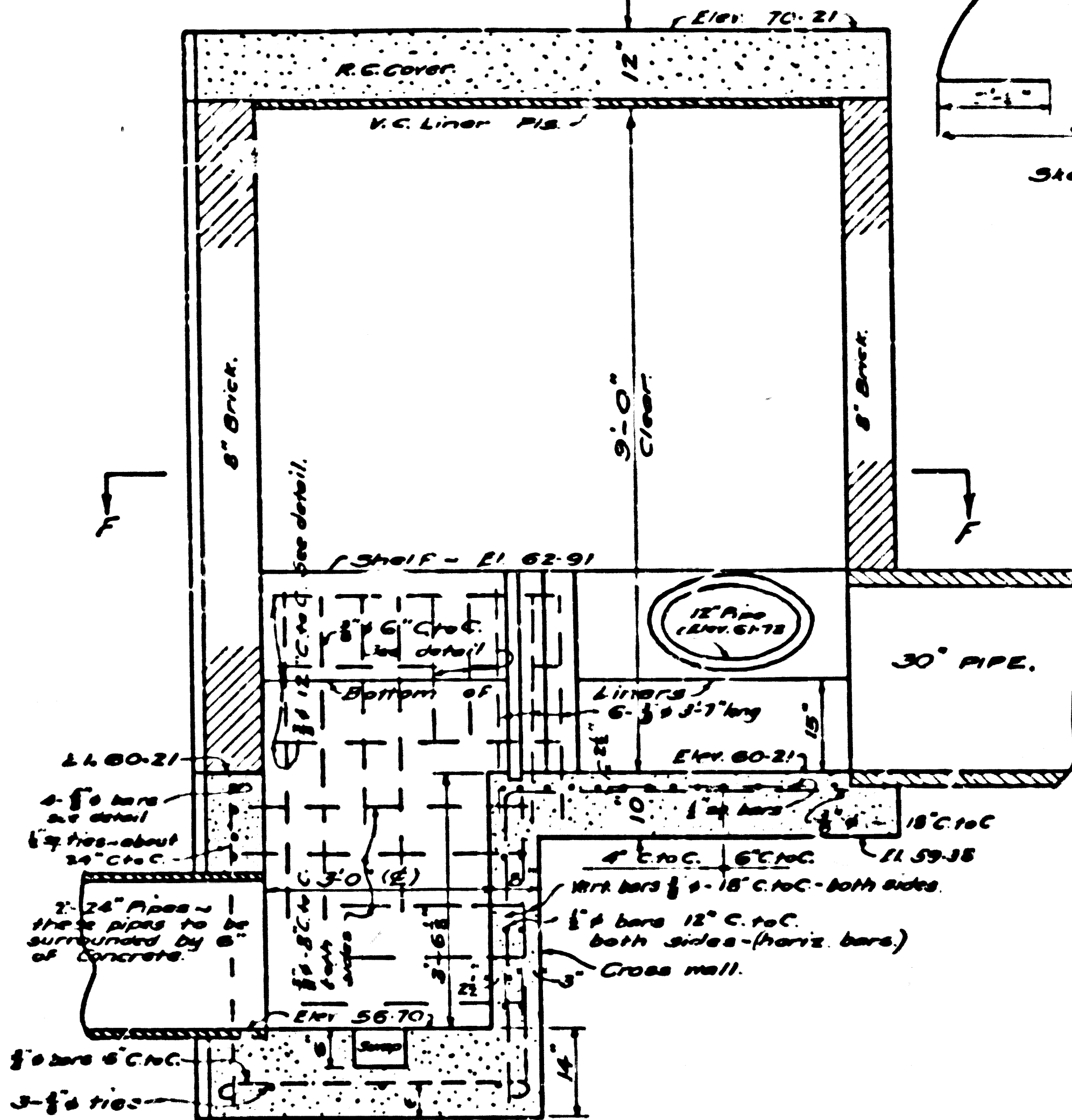


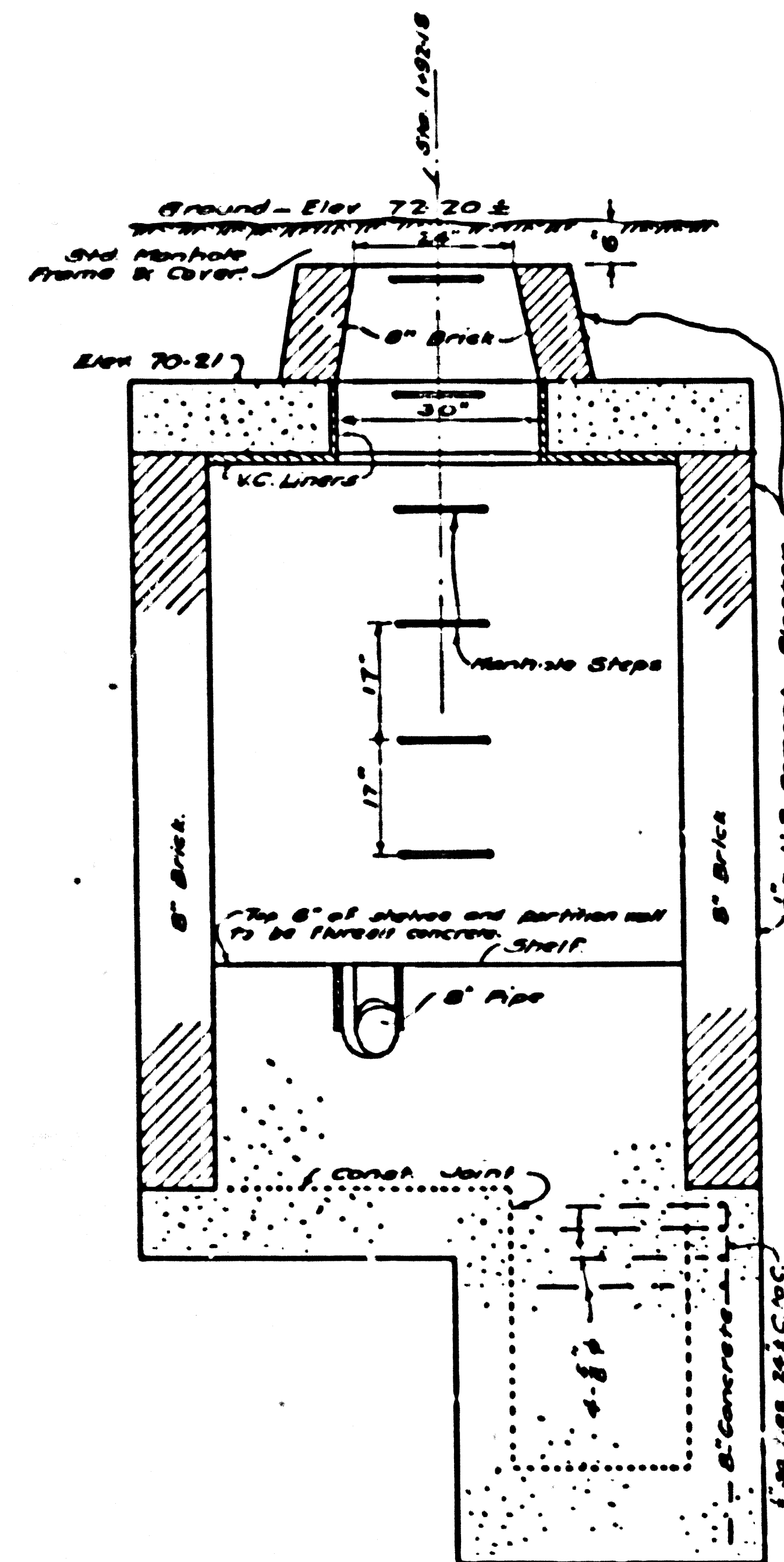
SECTION C-C



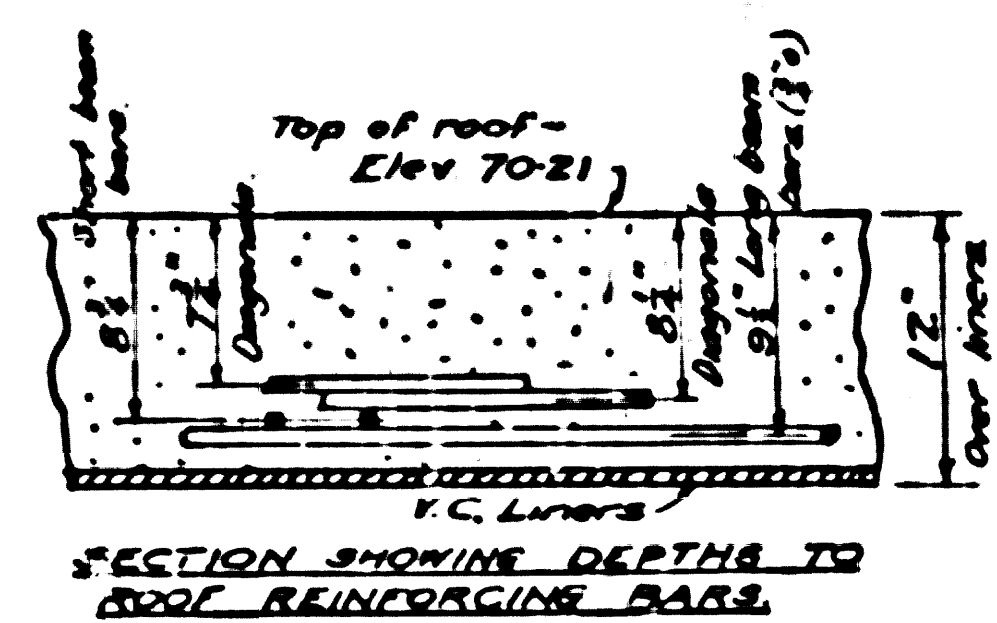
SECTION B-B



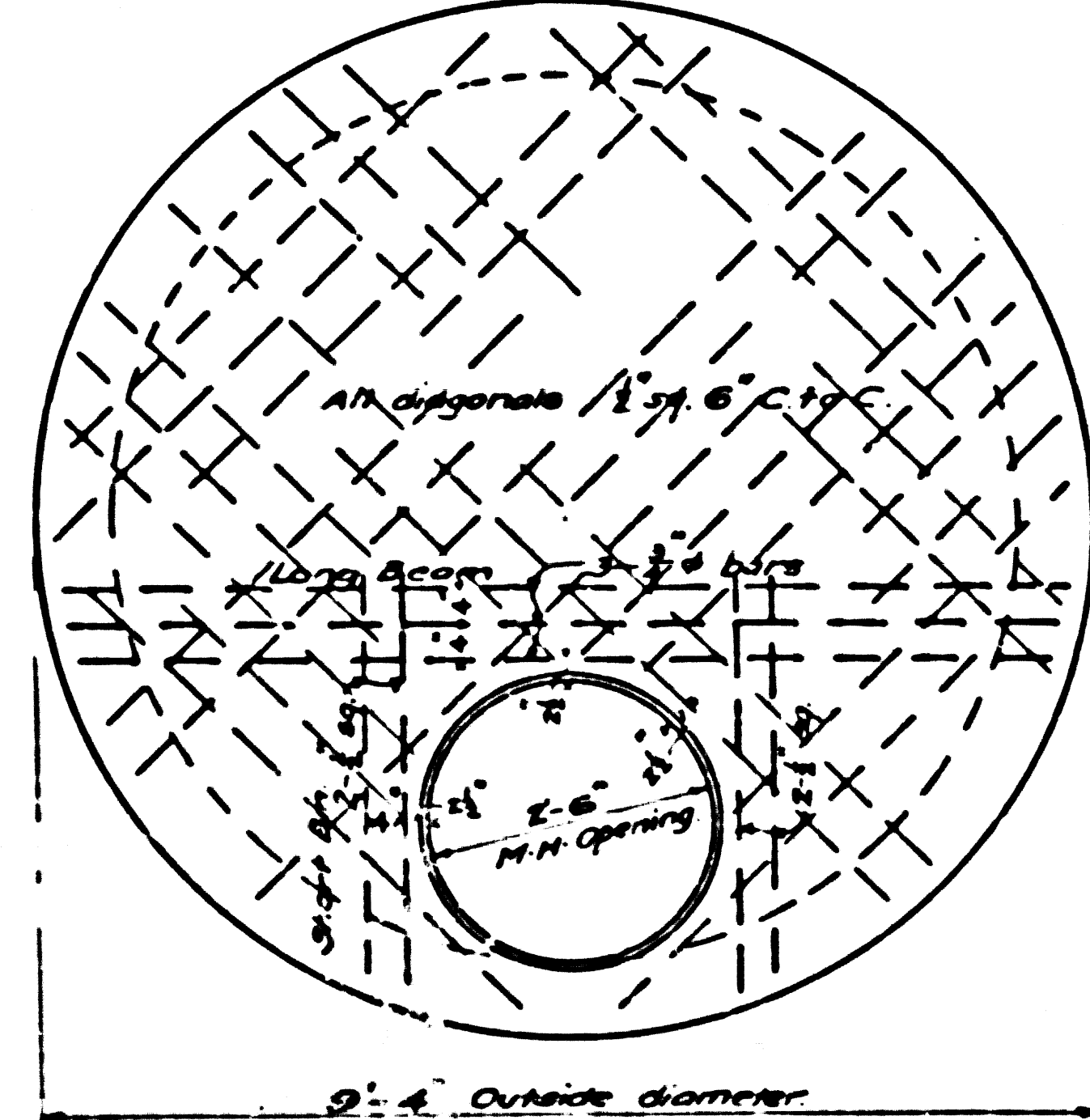
SECTION A-A



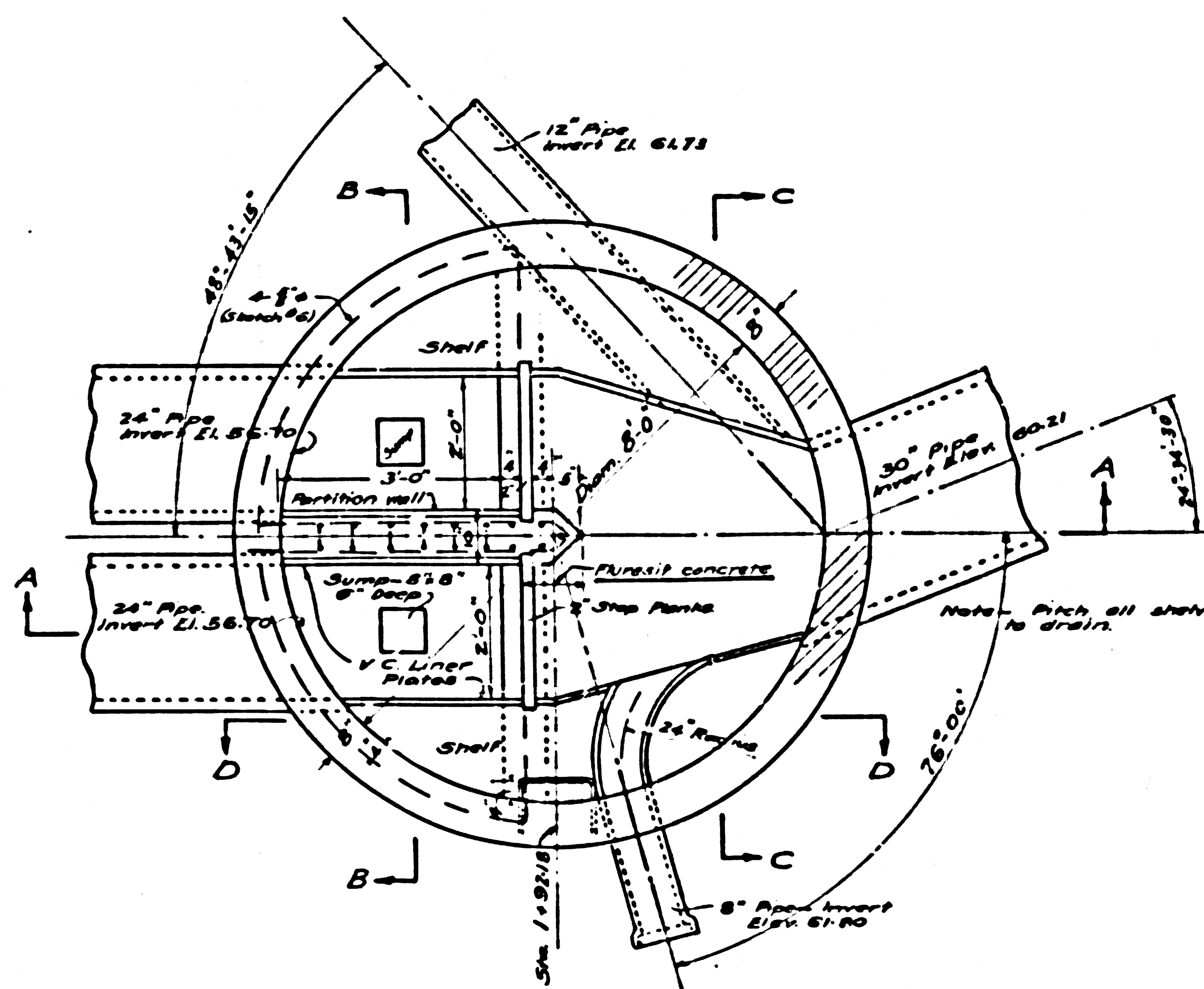
SECTION D-D



SECTION SHOWING DEPTHS TO ROOF REINFORCING BARS



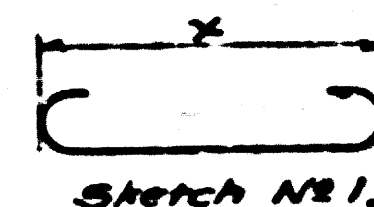
ROOF PLAN



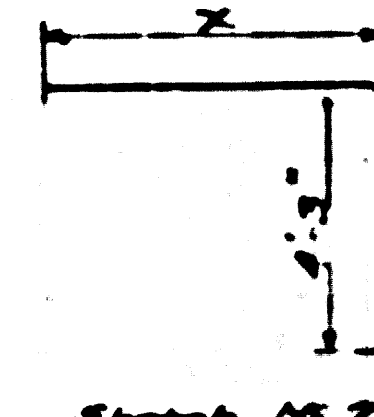
SECTION F-F

BILL OF REINFORCING BARS

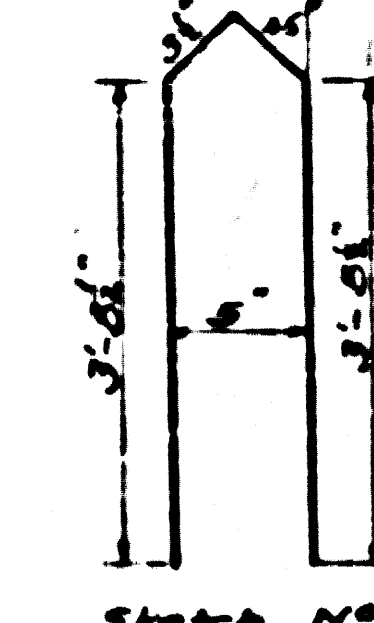
No	Qty	Size	Shape	Length	Location	Sketch	X
1	8	1/2"	Round	10'-0"	Roof Diagonals	1	8'-9"
2	2	"	"	9'-8"	"	1	8'-6"
3	2	"	"	9'-3"	"	1	8'-1"
4	2	"	"	8'-0"	"	1	7'-6"
5	2	"	"	7'-9"	"	1	6'-8"
6	4	"	"	6'-9"	"	1	5'-8"
7	2	"	"	6'-4"	"	1	5'-3"
8	2	"	"	6'-0"	"	1	4'-10"
9	2	"	"	5'-8"	"	1	4'-6 1/2"
10	4	"	"	5'-6"	"	1	4'-4"
11	4	"	"	4'-9"	Short beams	1	3'-8"
12	2	3/4"	"	10'-3"	Long beam	1	8'-8"
13	1	"	"	10'-1"	"	1	8'-6"
14	3	3/4"	"	4'-10"	Lower floor	1	4'-0"
15	2	"	"	4'-9"	"	1	3'-10 1/2"
16	2	"	"	4'-7"	"	1	3'-9"
17	2	"	"	4'-4"	"	1	3'-6"
18	2	"	"	4'-1"	"	1	3'-3"
19	2	"	"	3'-8"	"	1	2'-10"
20	2	"	"	3'-2"	"	1	2'-4"
21	1	"	"	8'-6"	" ties Straight		
22	1	"	"	7'-6"	"		
23	1	"	"	5'-9"	"		
24	2	3/4"	"	10'-1"	Upper floor	1	9'-0"
25	2	"	"	9'-11"	"	1	8'-10"
26	2	"	"	9'-7"	"	1	8'-6"
27	1	"	"	9'-2"	"	1	8'-1"
28	1	"	"	8'-10"	"	1	7'-9"
29	1	"	"	8'-1"	"	1	7'-0"
30	1	"	"	7'-1"	"	1	6'-0"
31	1	"	"	5'-10"	"	1	4'-9"
32	2	3/4"	"	8'-3"	" ties	2	4'-0"
33	2	"	"	9'-3"	"	2	5'-0"
34	1	"	"	9'-7"	"	2	5'-4"
35	8	3/4"	"	10'-0"	Cross wall	1	8'-10"
36	5	3/4"	"	4'-3"	" ties Straight		
37	3	"	"	8'-0"	Partition wall	3	
38	10	"	"	5'-0"	"	1	4'-1"
39	6	"	"	9'-6"	" (Vertical)	4	
40	5	"	"	3'-8"	"	5	3'-2"
41	4	3/4"	"	17'-10"	Concrete wall	6	
42	6	3/4"	"	4'-4"	" ties Straight		



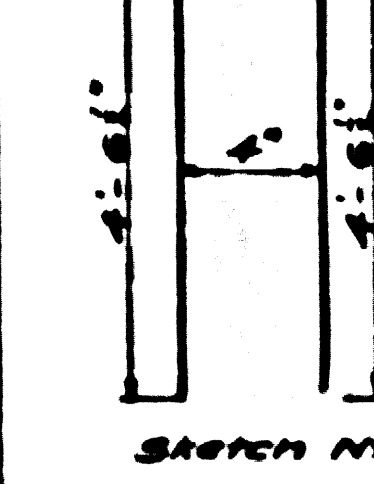
Sketch No. 1



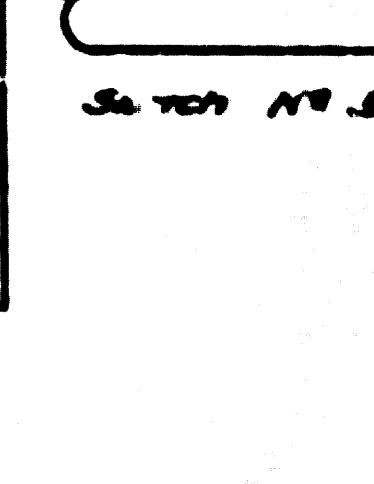
Sketch No. 2



Sketch No. 3



Sketch No. 4



Sketch No. 5

NOTES
 6" x 12" cylinders of concrete to have strength of not less than 2800 lbs. per sq. in. at 28 days.
 Reinforcing bars to be deformed intermediate grade steel steel in 1/2" to 2 1/2" diameter.
 Vertical cast iron pipe joints to be made with C.P. 1201 Union Compound.
 Dimensions from surface of concrete to steel are to center of bars.
 Turn 4" each over 6" x 12" pipe and 6" each over 30" pipe in brackets.
 Bars to be made by bending bar about a pin of diameter eight times that of bar.
 Return marked flue pipe concrete to have five pounds of "Fluor" added to each bag of cement before mixing.
 All liner plates 64" wide.

Reviewed for Corrections
 Aug. 21 1941
 A. J. Kincaid

GLEN AVENUE DRAINAGE SYSTEM
 OF THE COUNTY OF LOS ANGELES, CALIF.
HOLMES-WILLOWBROOK TRUNK SEWER
SIPHON OUTLET

AT
 ORIS ST. & MONA BLVD.
 SHEET 25 C OF 26 SHEETS

SCALE AS NOTED
 OCT 1935
 ALFRED JONES COUNTY SURVEYOR
 RECOMMENDED BY [Signature] APPROVED BY [Signature]
 CHIEF DEPUTY CHIEF SURVEYOR
 APPROVED BY [Signature]
 CH. ENGR. COUNTY SAN. DIST. NO. 1

CSB-1171-25-C
 A1 OF A1

DESIGNED BY [Signature] DEC. 1935
 TRACED BY [Signature] DEC. 1935
 CHECKED BY [Signature] DEC. 1935

SHEET NO. 25 C OF 26 SHEETS COUNTY SURVEYORS MAP NO. B-1111