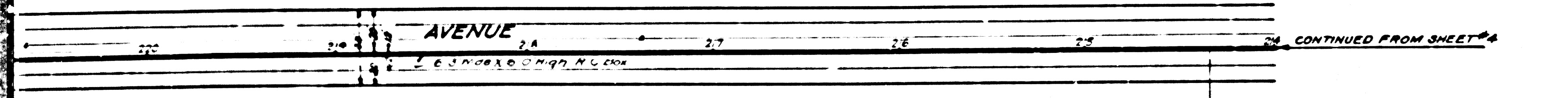


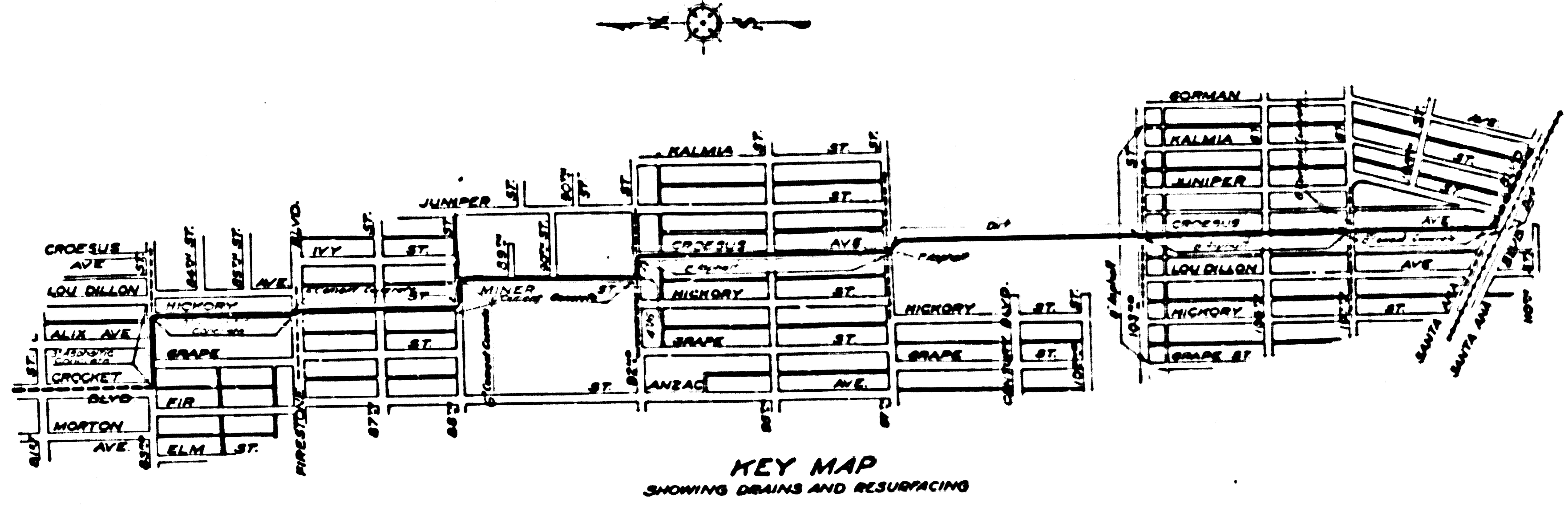
N2
M.B. 67-61-62

5432



N2
M.B. 67-61-62

5432



NOTES:

Elevations are in feet above U.S.G.S. or mean Sea Level Datum.

Stations of inlets and junctions refer to the intersections of the center lines of the inlets with the center line of the main drain.

Elevations of all inlets except catch basin inlets into box sections refer to the flow lines of the inlets produced on their gratings to the vertical plane thru the center line of the main drain. Elevations of catch basin inlets into box sections refer to the intersections of the flow lines of these inlets with the inside wall of the box sections.

For details of all standard structures see Standard Plans.

All pipe not otherwise specified shall be plain cement pipe.

All stubs to be one length of pipe with ends sealed with 2" red wood planking, unless otherwise specified.

Catch basins shall be built with a curb face of 10' or more which shall include a minimum depression at opening of 4" below gutter grade, unless otherwise specified.

Sanitary sewers crossing storm drains, shown in profile with less than 1 1/2 feet clearance, are to be encased as per S-4-6 for a length equal to the width of conduit trench. In addition, if less than 1/2 ft. clearance sewers must be of cast iron pipe and encased as noted above.

Corrected as Constructed *September 1941*
A.T. Hircard

**GLEN AVENUE
DRAINAGE SYSTEM**

OF THE COUNTY OF LOS ANGELES, CALIFORNIA
PLAN AND PROFILE OF

GLEN AVE. TRUNK
STA. 210+00 TO STA. 214+00

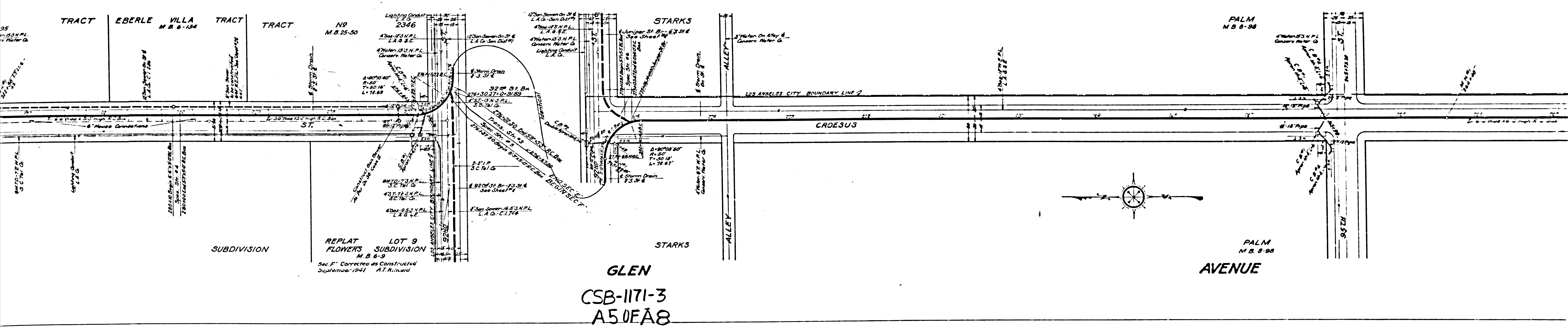
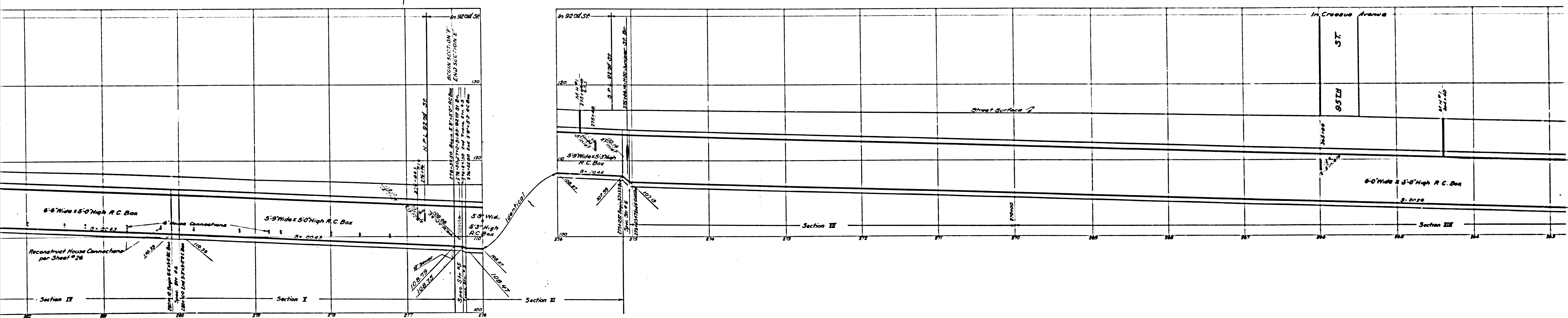
SHEET 3 OF 26 SHEETS

DATE 11/11/35 NOVEMBER 1935
ALFRED JONES COUNTY SURVEYOR
RECOMMENDED *[Signature]* APPROVED *[Signature]*

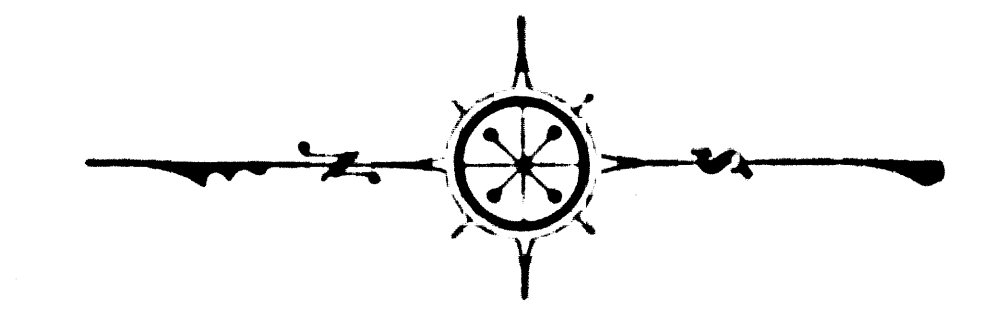
| REFERENCE | DESIGNED | L. Longacre | DEC 1934 |
|-----------|----------|---------------|----------|
| P. B. 495 | | | |
| L. B. 678 | TRACED | PL. Hunsbeck | AUG 1935 |
| | CHECKED | E.E. Mitchell | NOV 1935 |

CSB-1171-3
A10FAB

Unit "3" Unit "2"

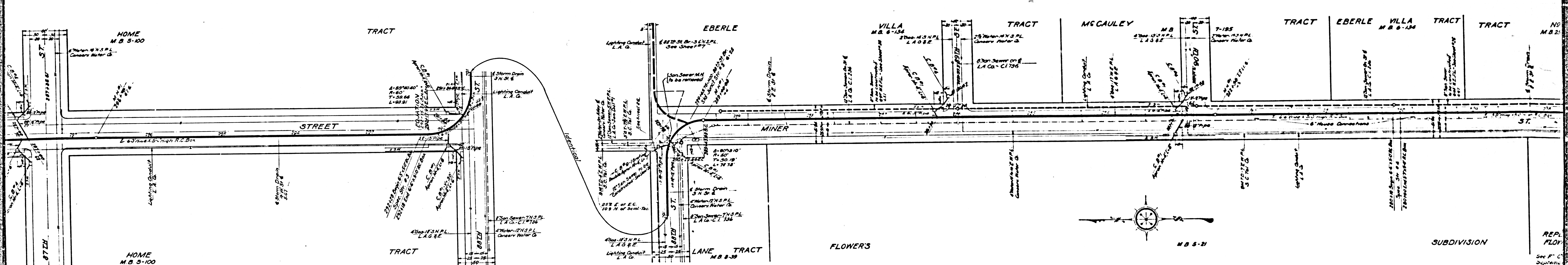
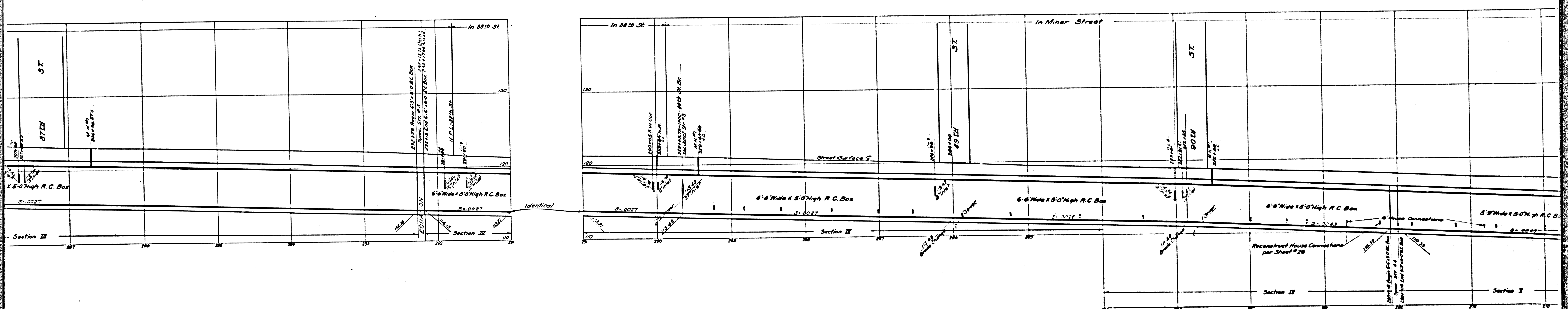


GLEN
 CSB-1171-3
 A50FA8



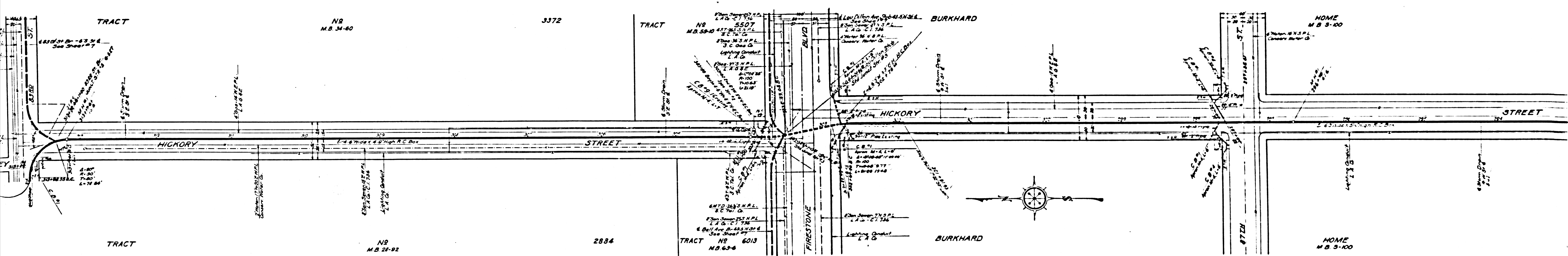
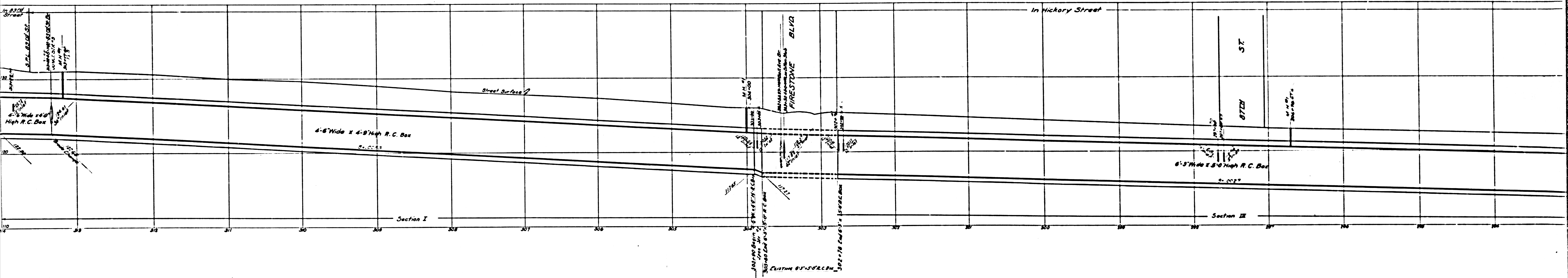
REPLAT LOT 9
 FLOWERS SUBDIVISION
 M.B. 6-9
 Sec. 1" Corrected as Constructed
 September 1941 A.T. Rivard

Unit



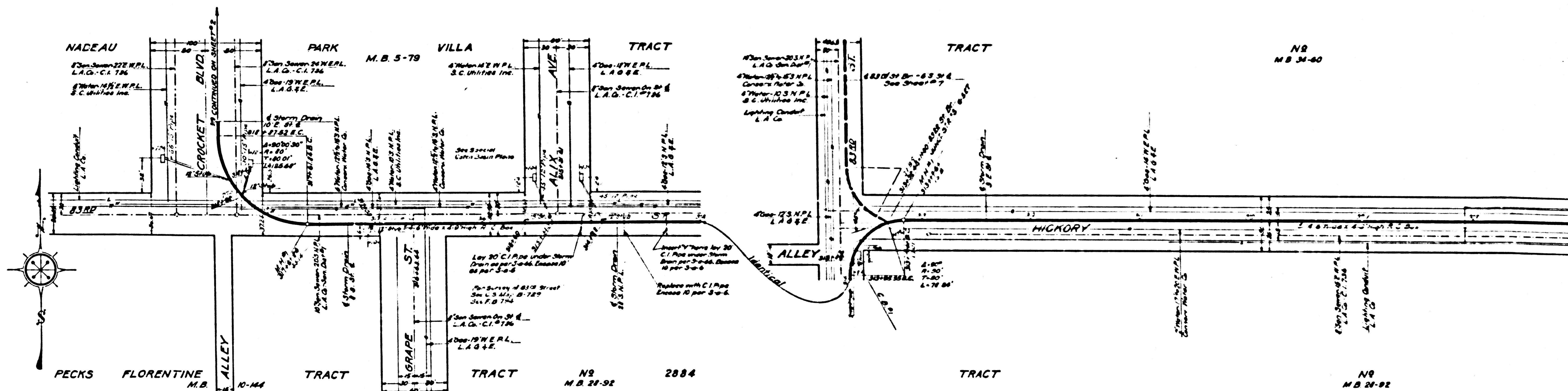
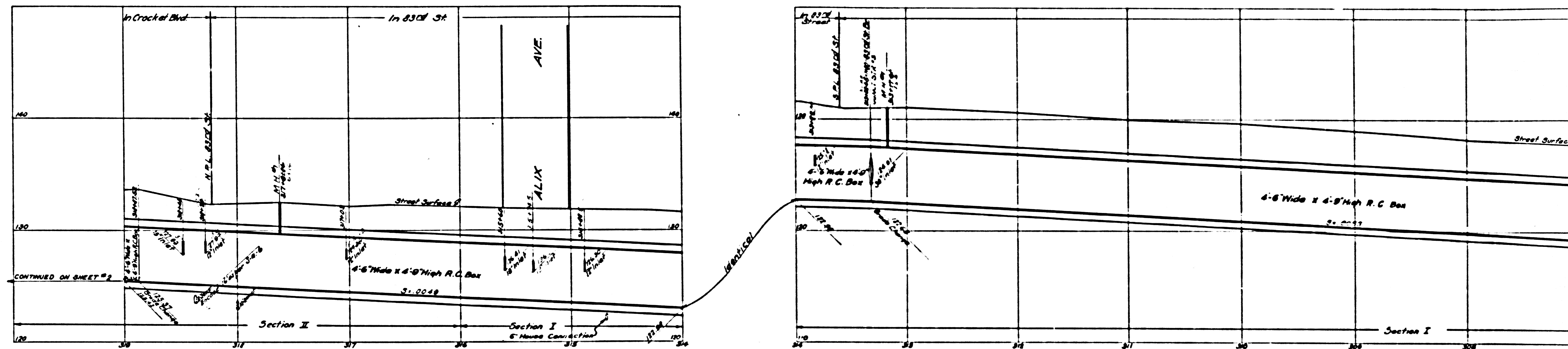
CSB-1171-3
A60FAB

REPL. FLOW. See 'F' C. Schedule

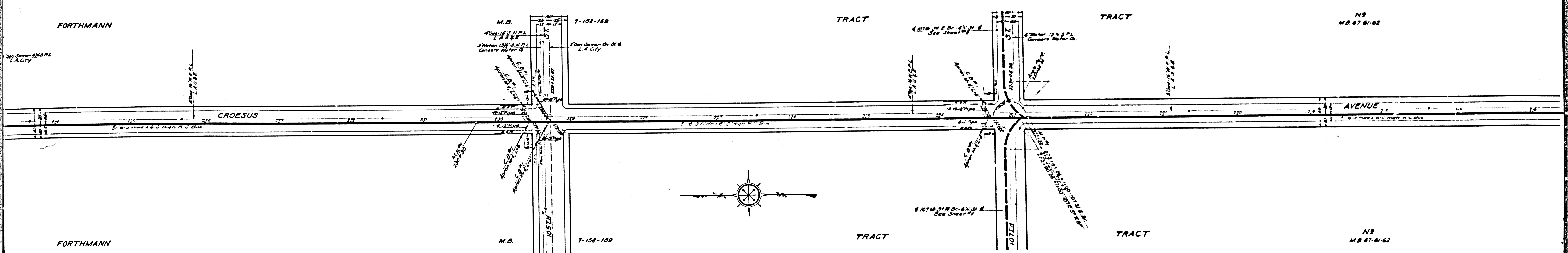
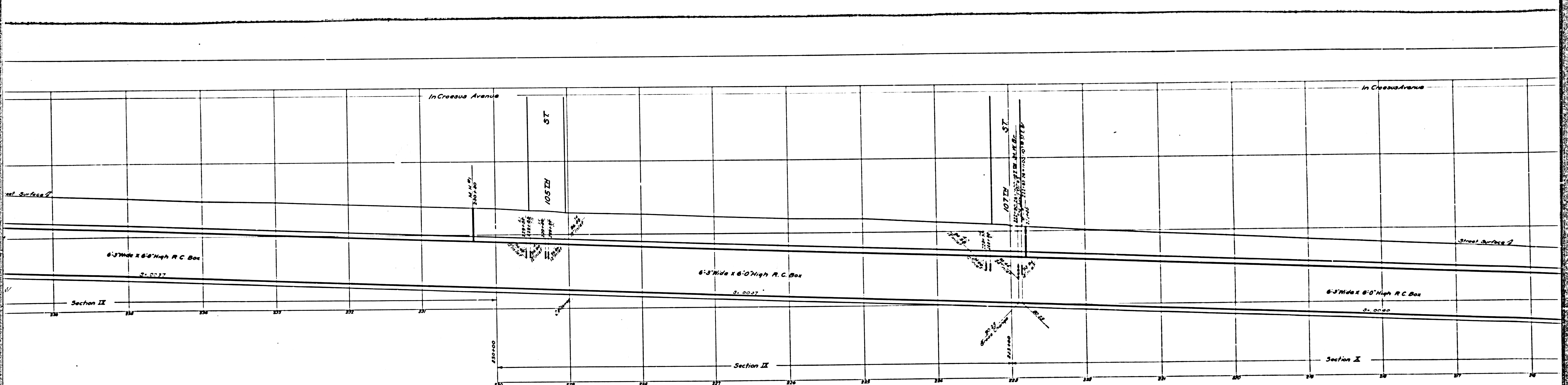


CSB-1171-3
A70FA8

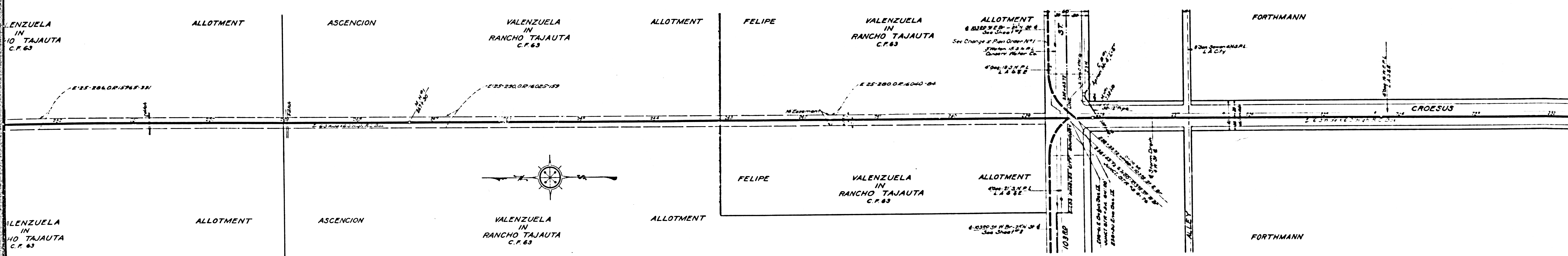
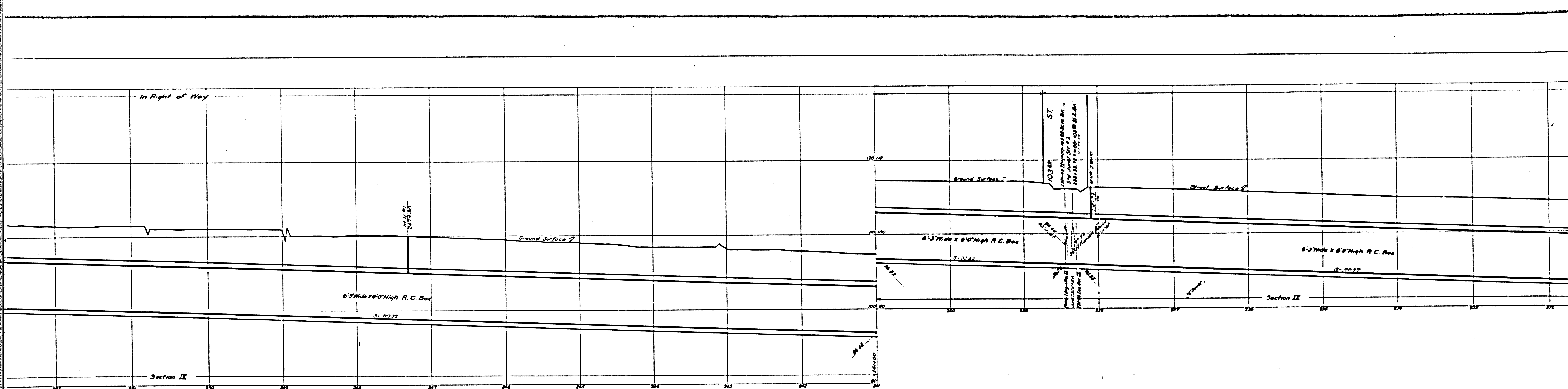
INDEX
 Lines shown on this sheet
 Reading from left to right
 PLAN AND PROFILE
 GLEN AVE. TRUNK



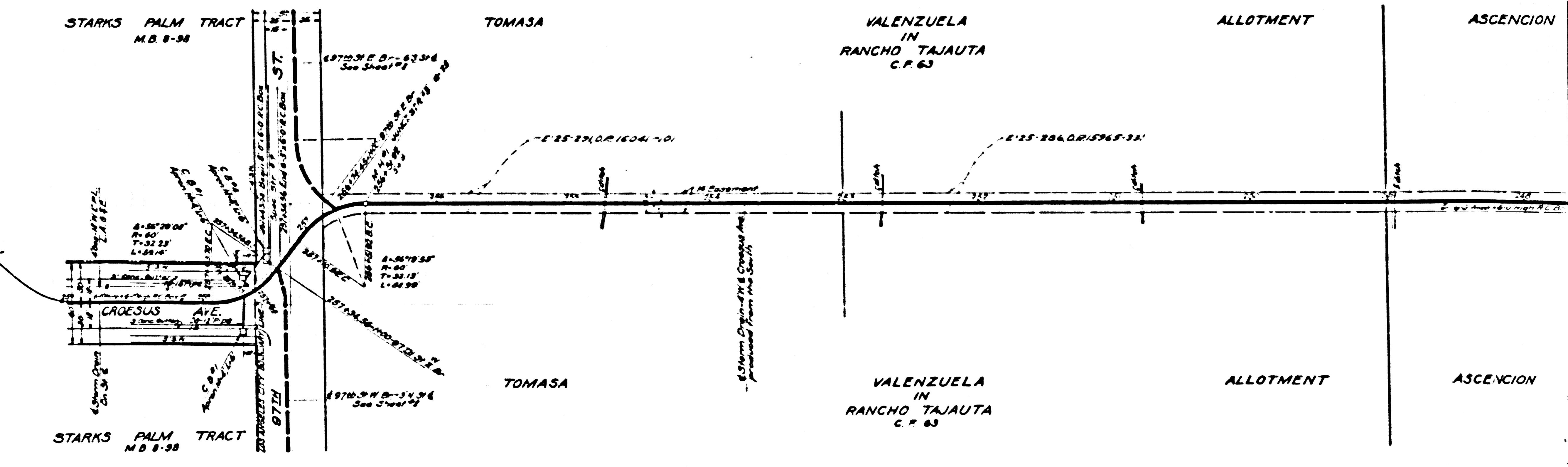
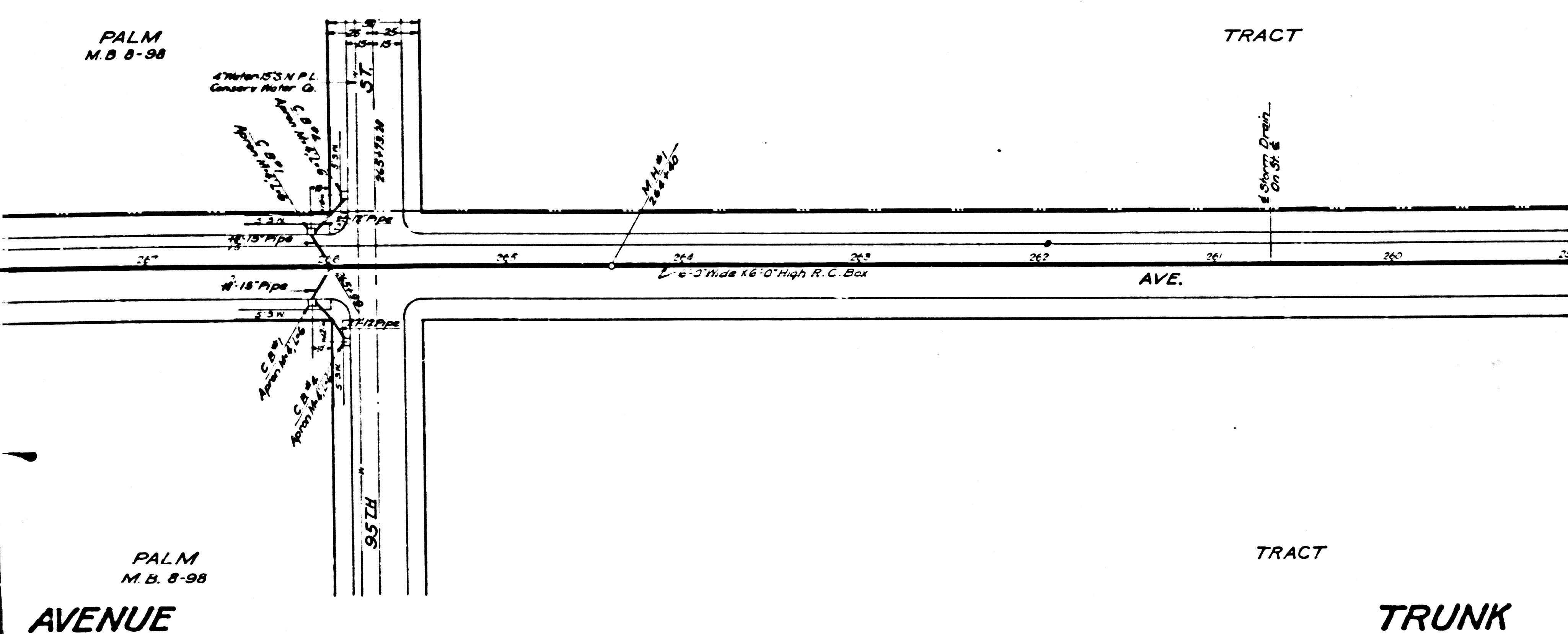
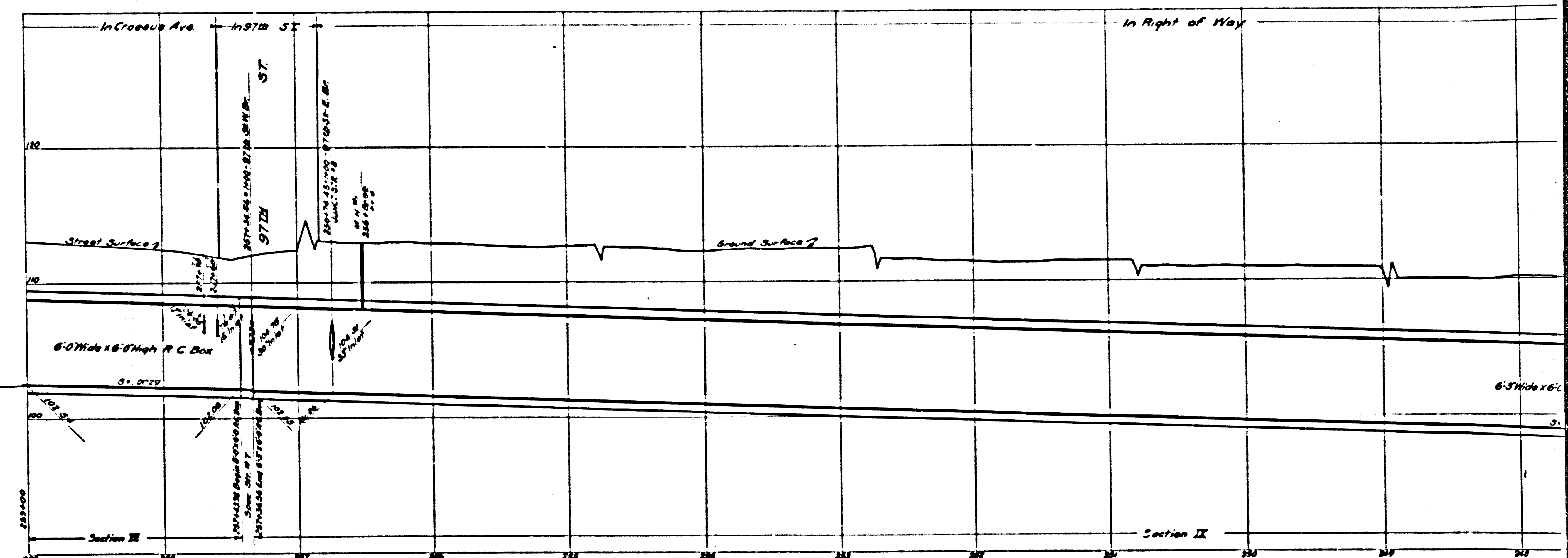
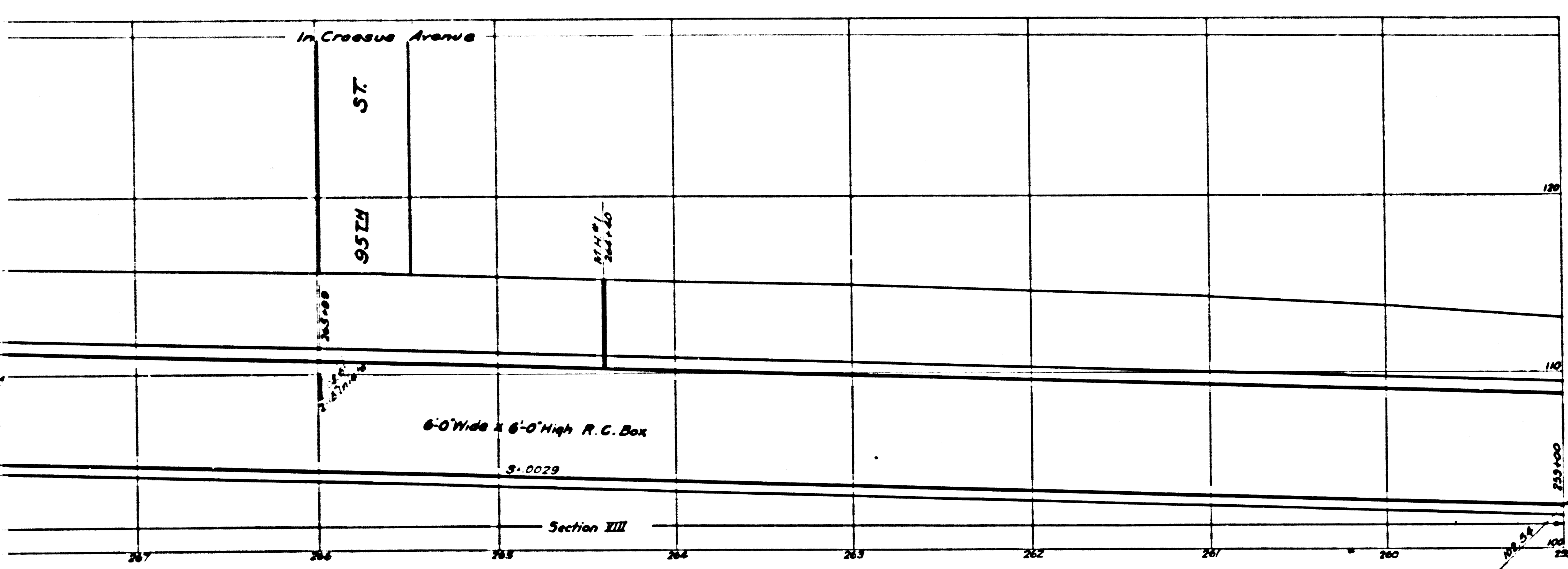
CSB-1171-3
 A80FA8



CSB-1171-3
A20FA8



CSB-1171-3
A30FA8



CSB-1171-3
A4 OF A8