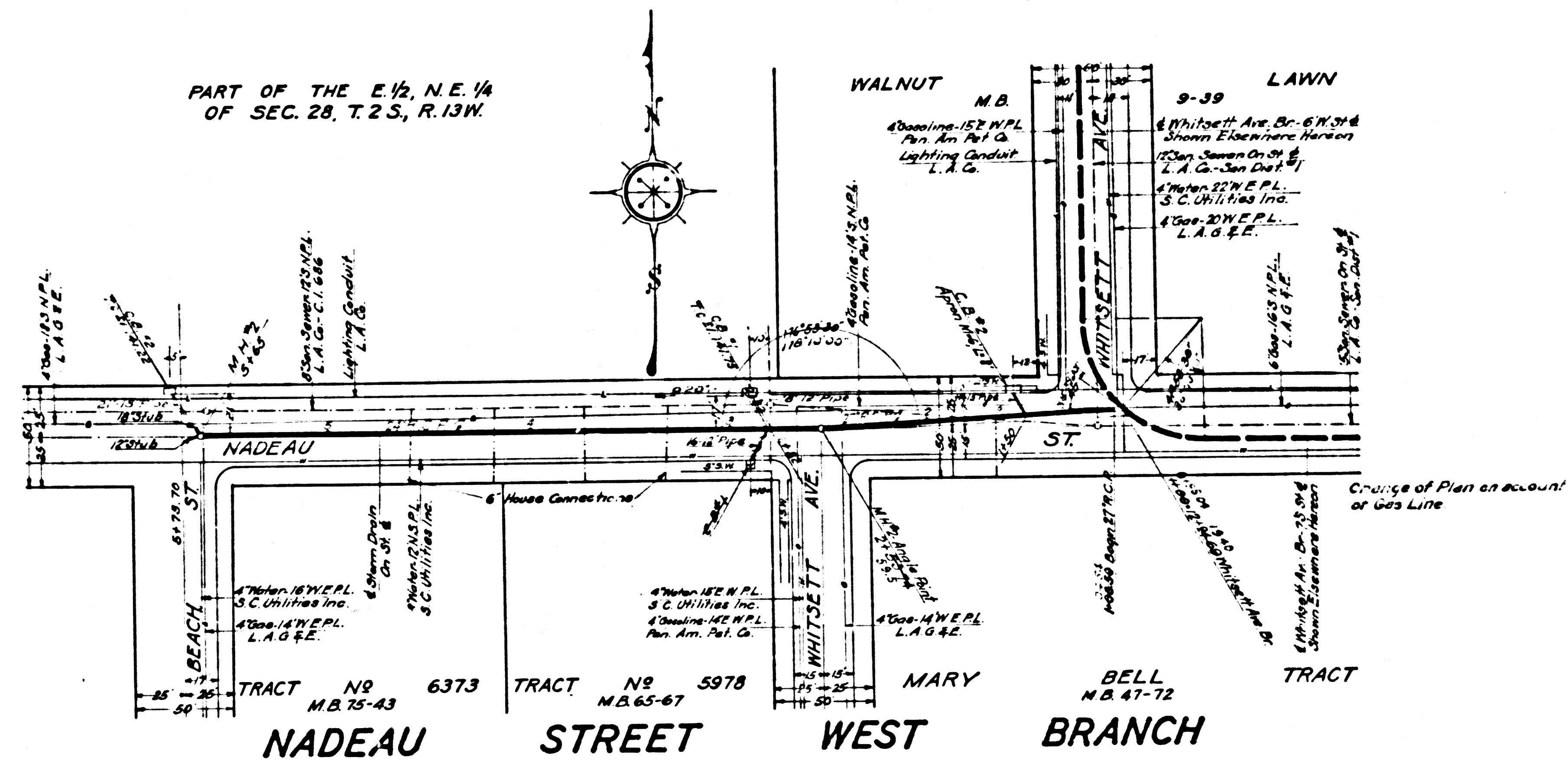


KEY MAP  
SHOWING DRAINS AND RESURFACING



NOTES:

Elevations are in feet above U.S.G.S. or mean Sea Level Datum.

Stations of inlets and junctions refer to the intersections of the center lines of the inlets with the center line of the main drain.

Elevations of all inlets except catch basin inlets into box sections refer to the flow lines of the inlets produced on their gradients to the vertical plane thru the center line of the main drain. Elevations of catch basin inlets into box sections refer to the intersections of the flow lines of these inlets with the inside wall of the box section.

For details of all standard structures see Standard Plans.

All pipe not otherwise specified shall be plain cement pipe.

All stubs to be one length of pipe with ends sealed with 2\"/>

Catch basins shall be built with a curb face of 10\"/>

Sanitary sewers crossing storm drains, shown on profile with less than two feet clearance, are to be encased as per S-6 for a length equal to the width of conduit trench in addition if less than 1/2 ft. clearance sewers must be of cast iron pipe and encased as noted above.

GLEN AVENUE  
DRAINAGE SYSTEM  
OF THE COUNTY OF LOS ANGELES, CALIFORNIA  
PLAN AND PROFILE OF  
71st. ST. BRANCH  
76TH. ST. BRANCH  
WHITSETT AVE. BRANCH  
NADEAU ST. WEST BRANCH

SHEET 6 OF 26 SHEETS

NOVEMBER 1933

ALFRED JONES COUNTY SURVEYOR

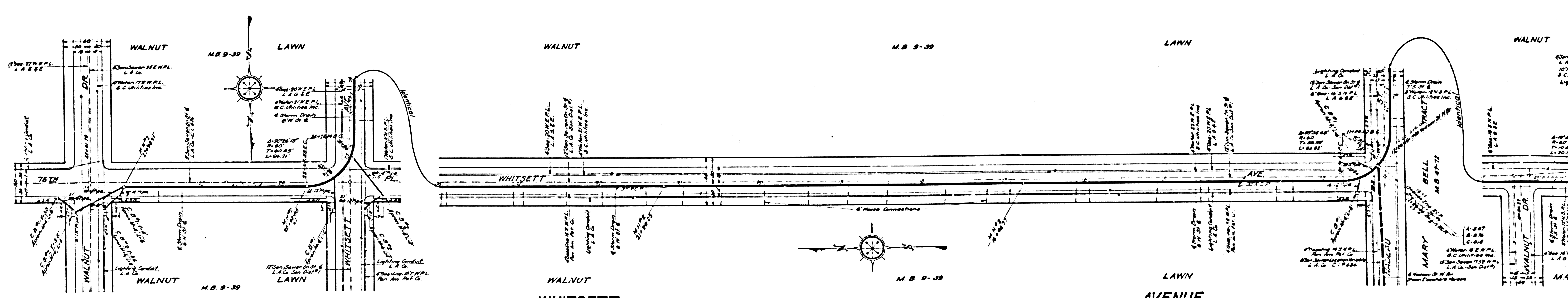
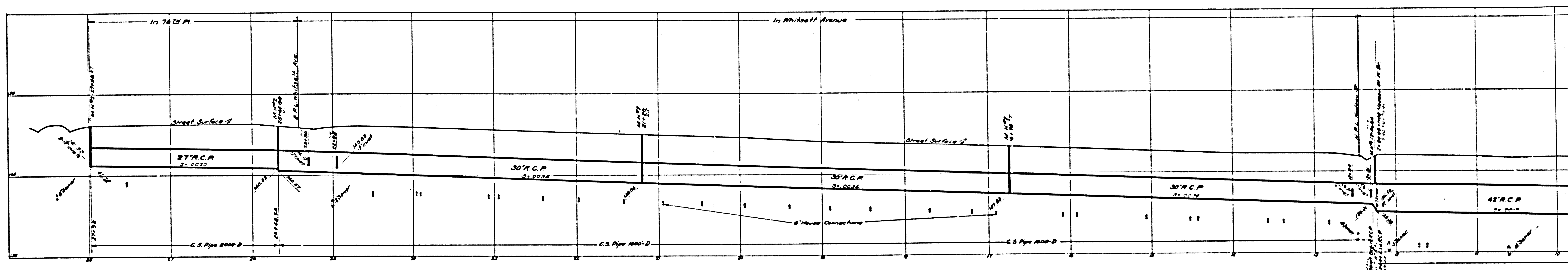
RECOMMENDED BY [Signature] APPROVED BY [Signature]

REFERENCE	DESIGNED	DATE
F. B. 493	L. Longacre	OCT. 1931
L. B. 679	TRACED	P. I. Munro
	CHECKED	E. E. Mitchell
		NOV. 1933

6

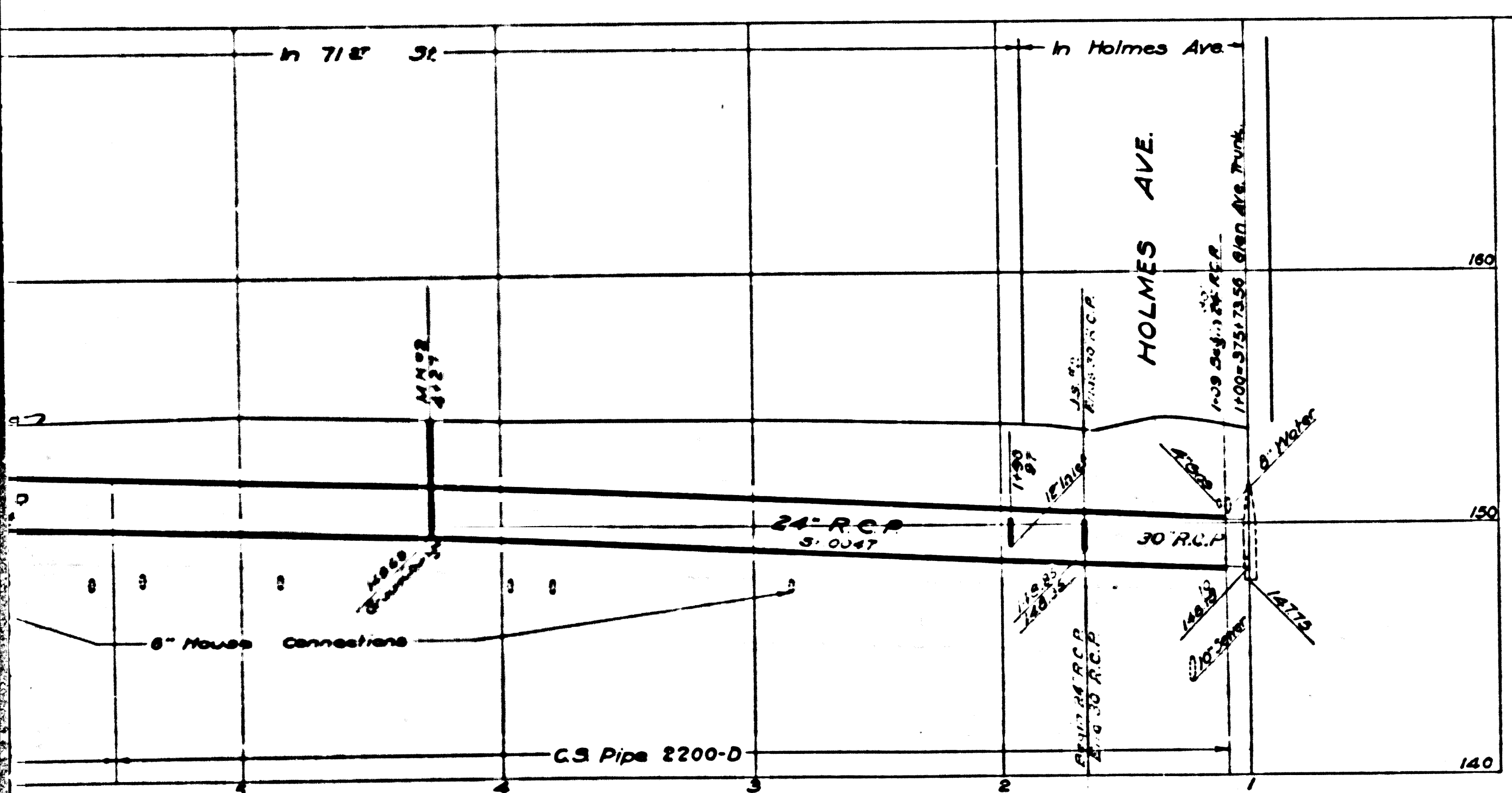
CSB-1171-6  
A1 OF A5



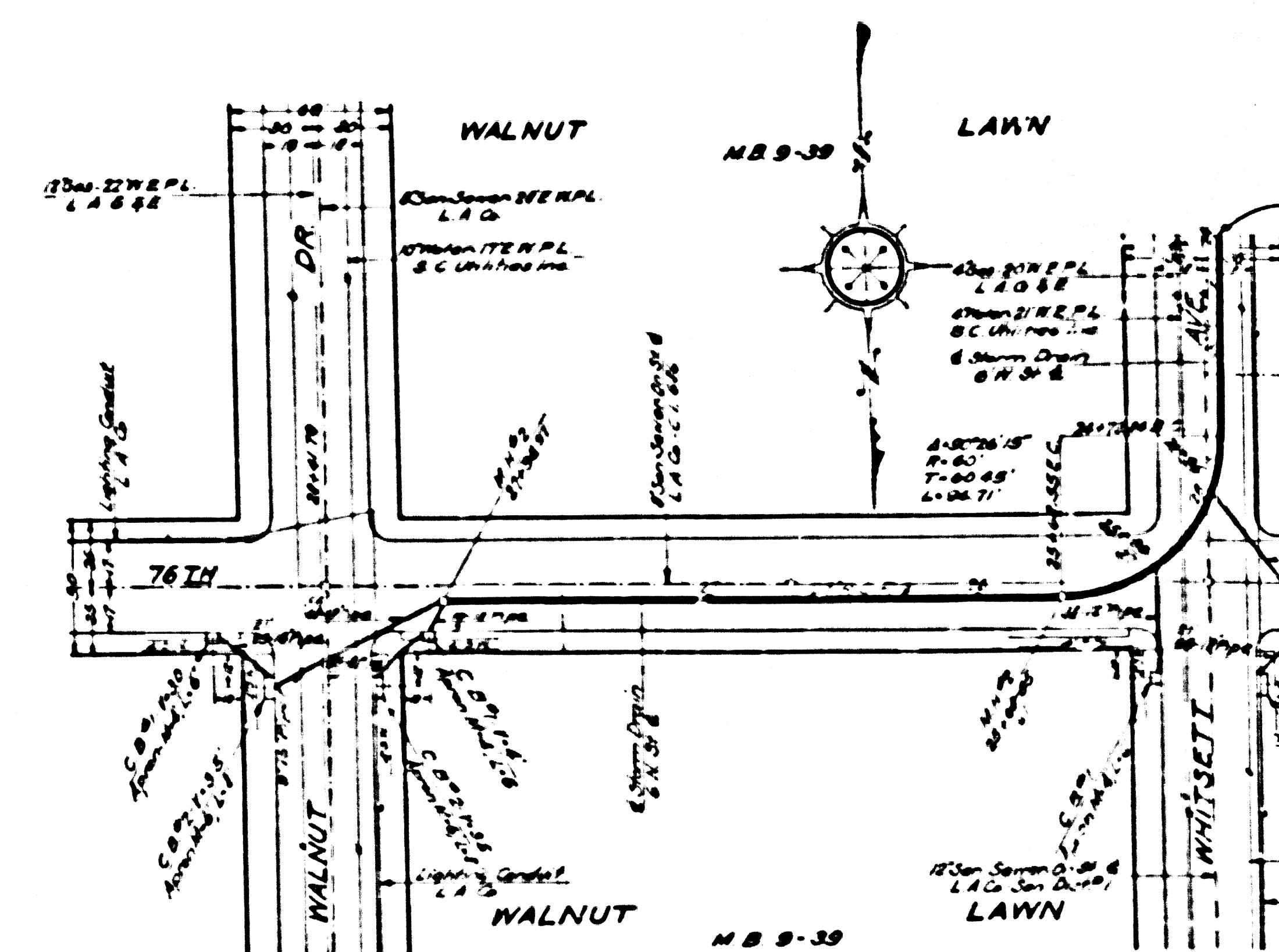
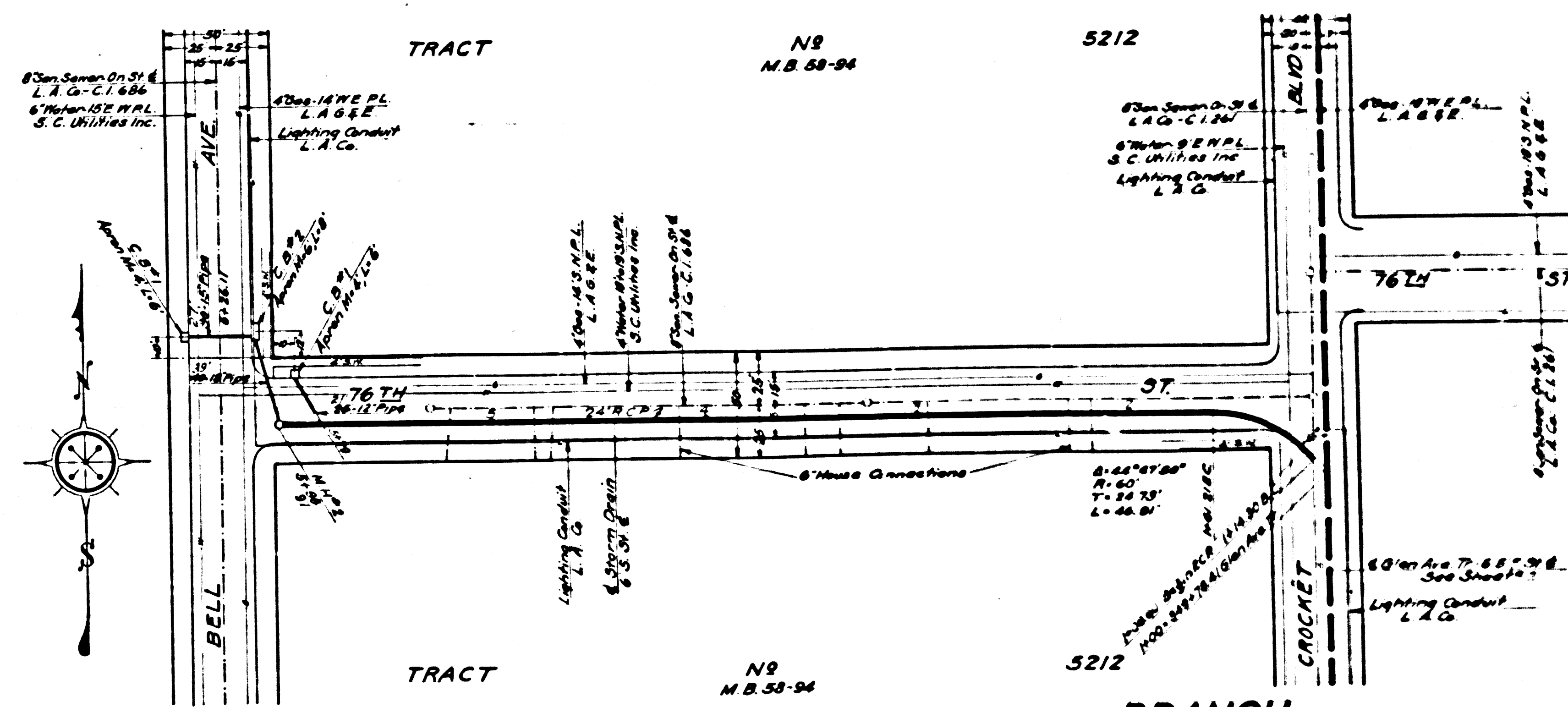
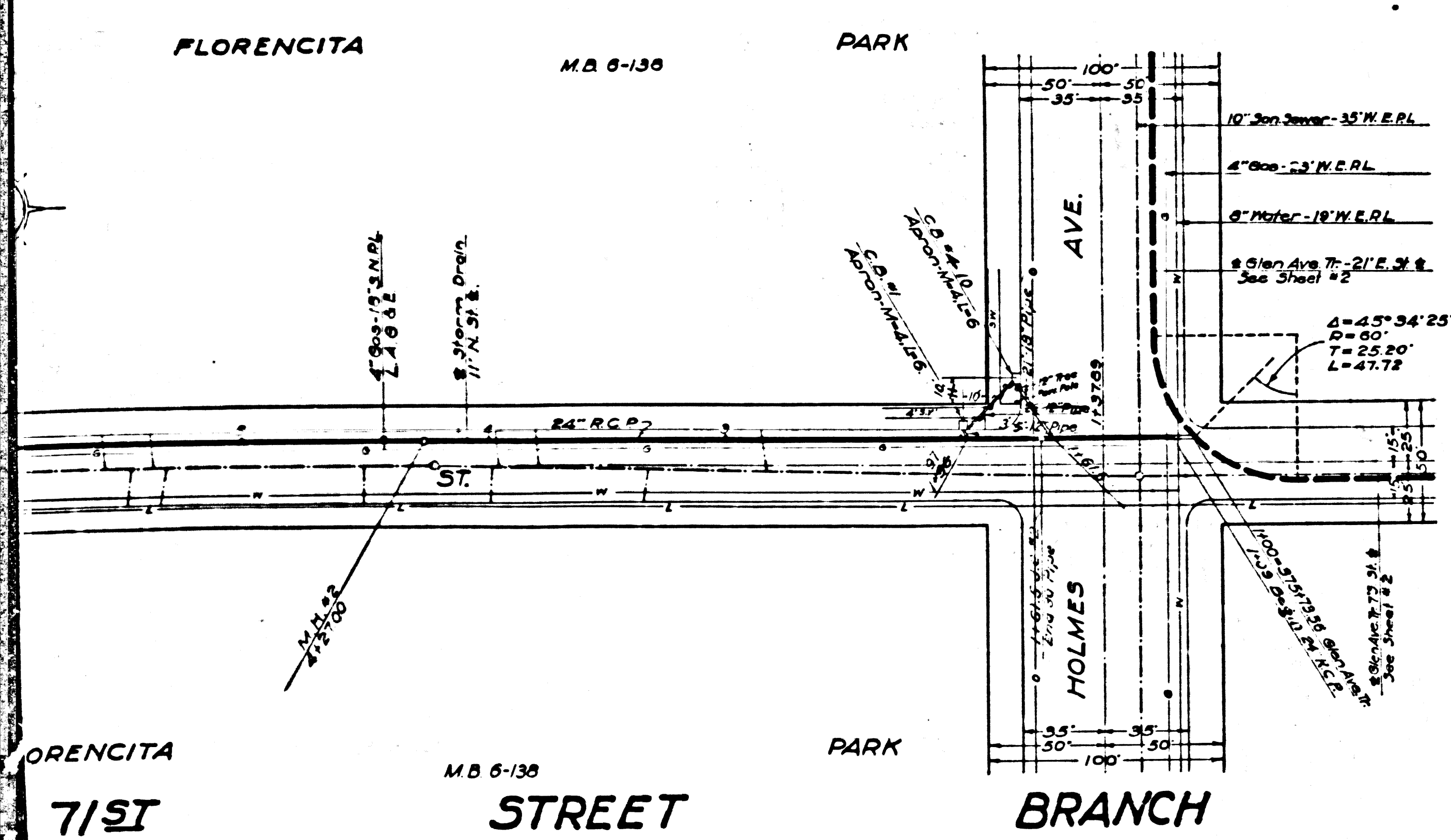
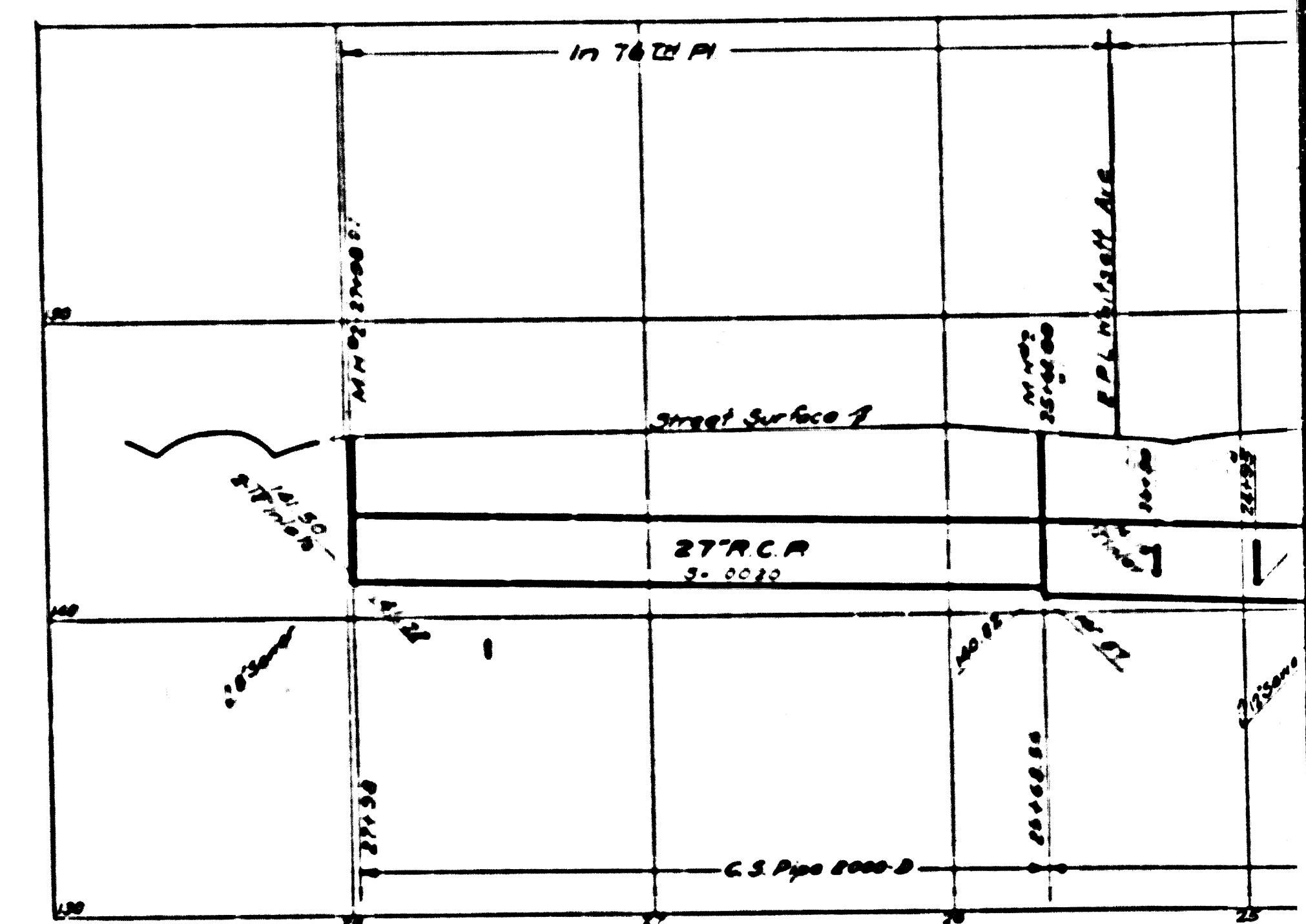
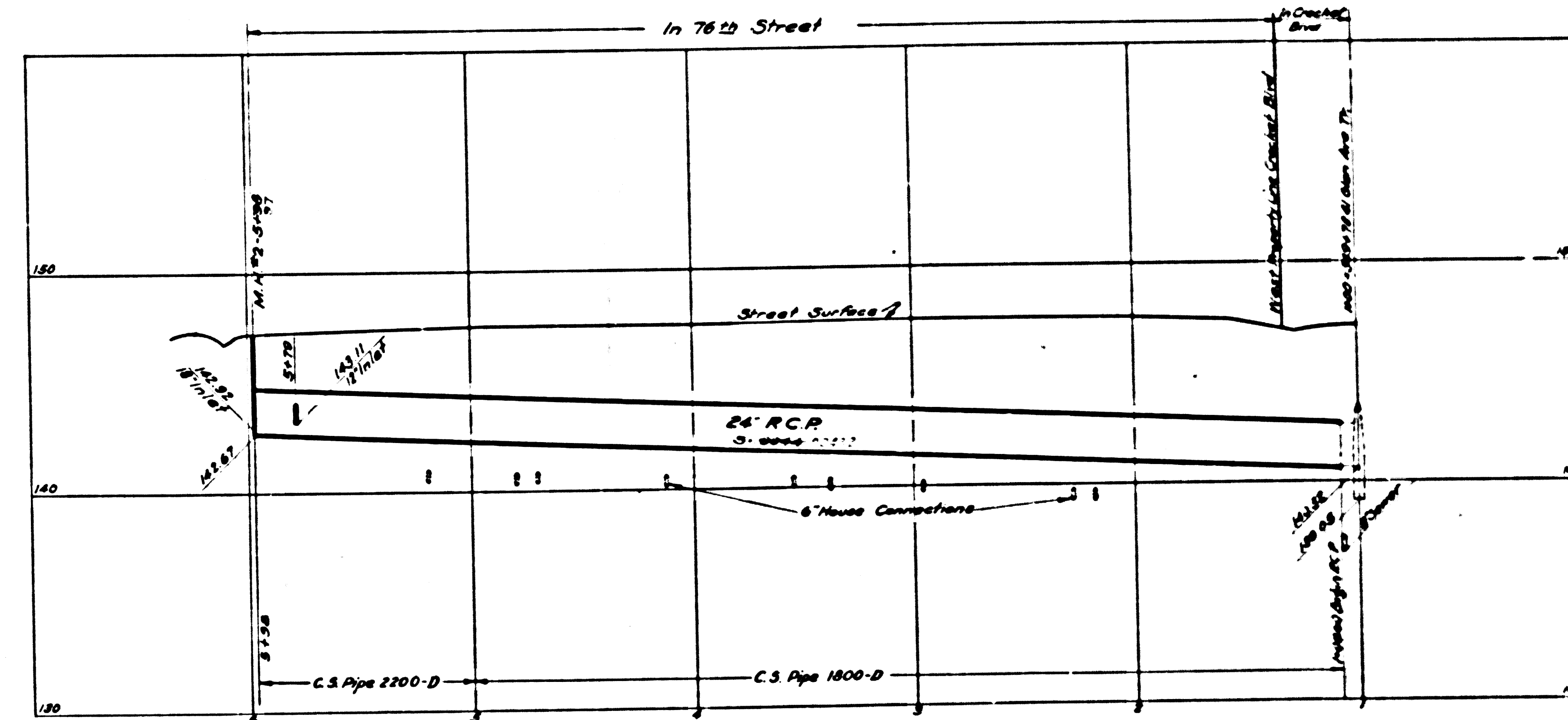


CS B-1171-G  
A3 OF A5





See Change of Plan Cover NPI.



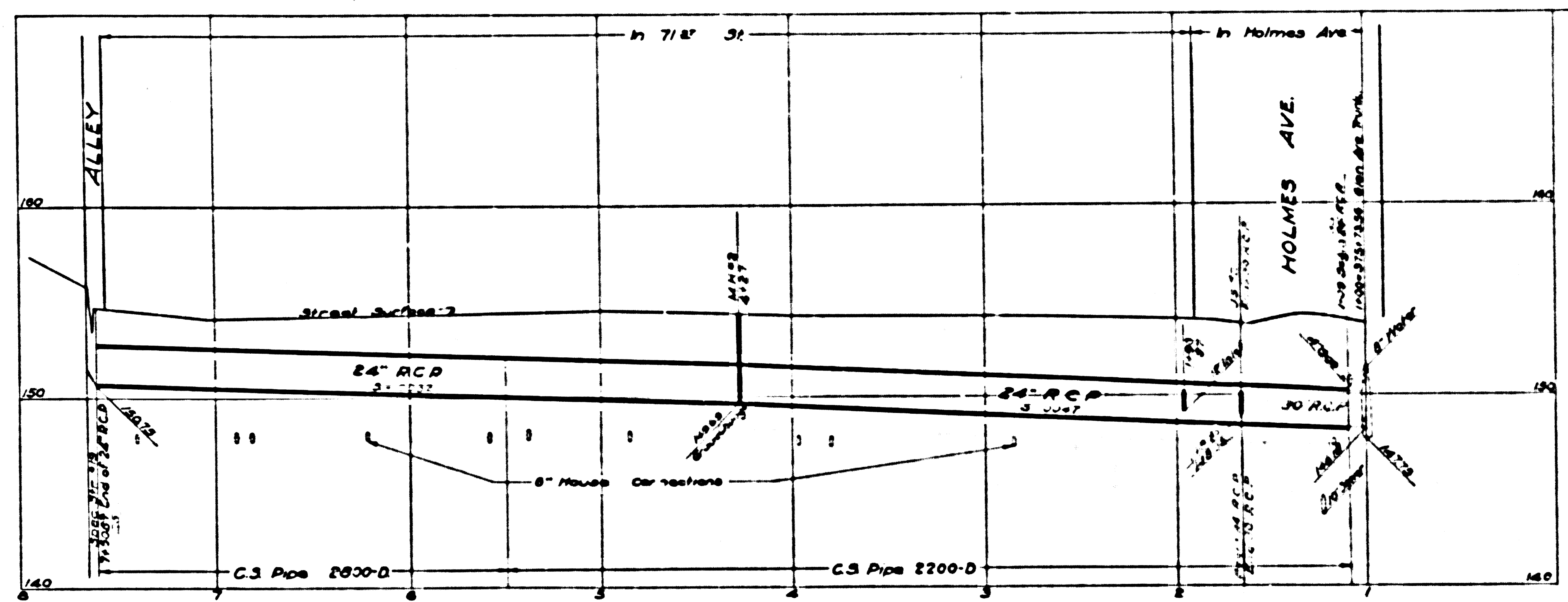
CS B-1171-6  
A4 OF A5



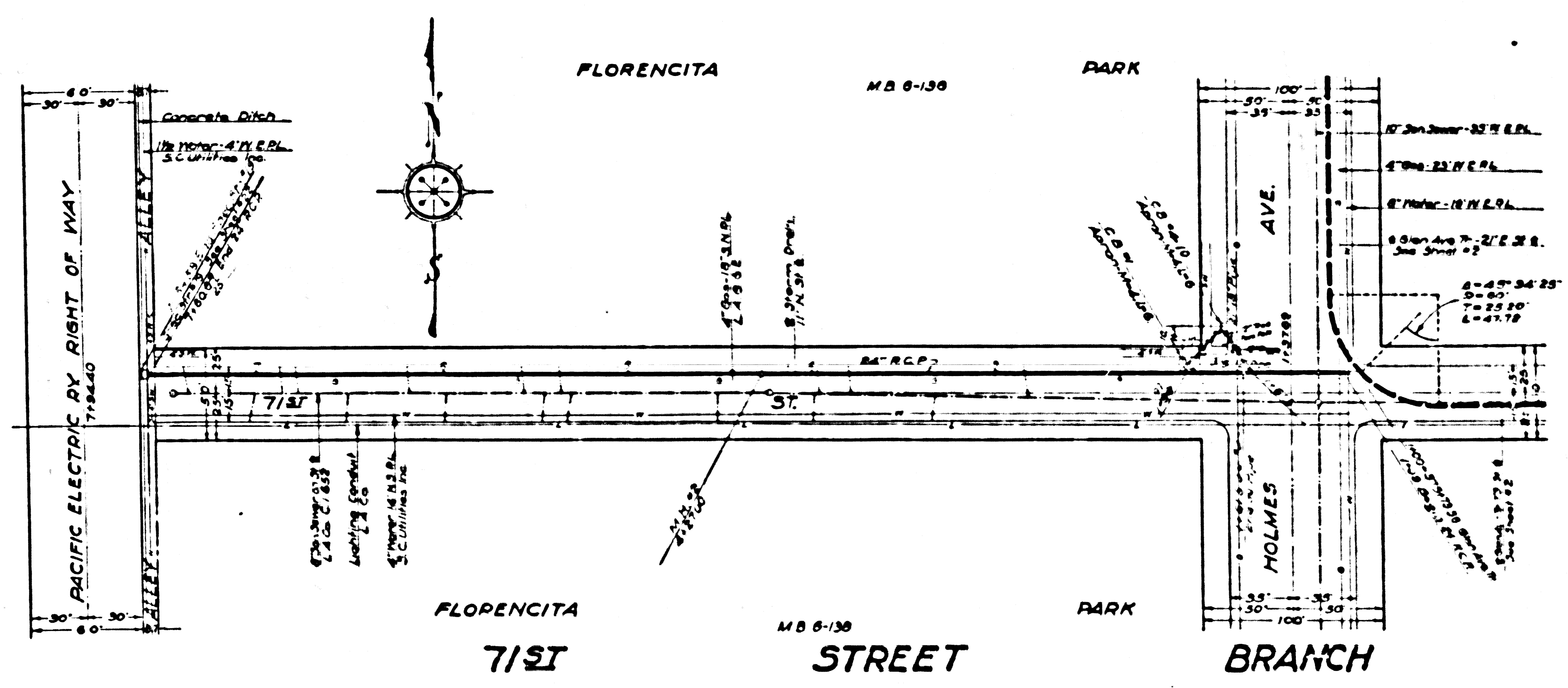
SHEET NO 0 OR 50 SHEETS  
COMPLIA 2HRA2CERS MAB NO B-11-1

SHEET NO 0 OR 50 SHEETS  
COMPLIA 2HRA2CERS MAB NO B-11-1

**INDEX**  
Lines Shown on this Sheet  
Reading from Left to Right:  
71ST ST BR  
76TH ST BR  
WHITSETT AVE BR  
NADEAU ST, WEST BR

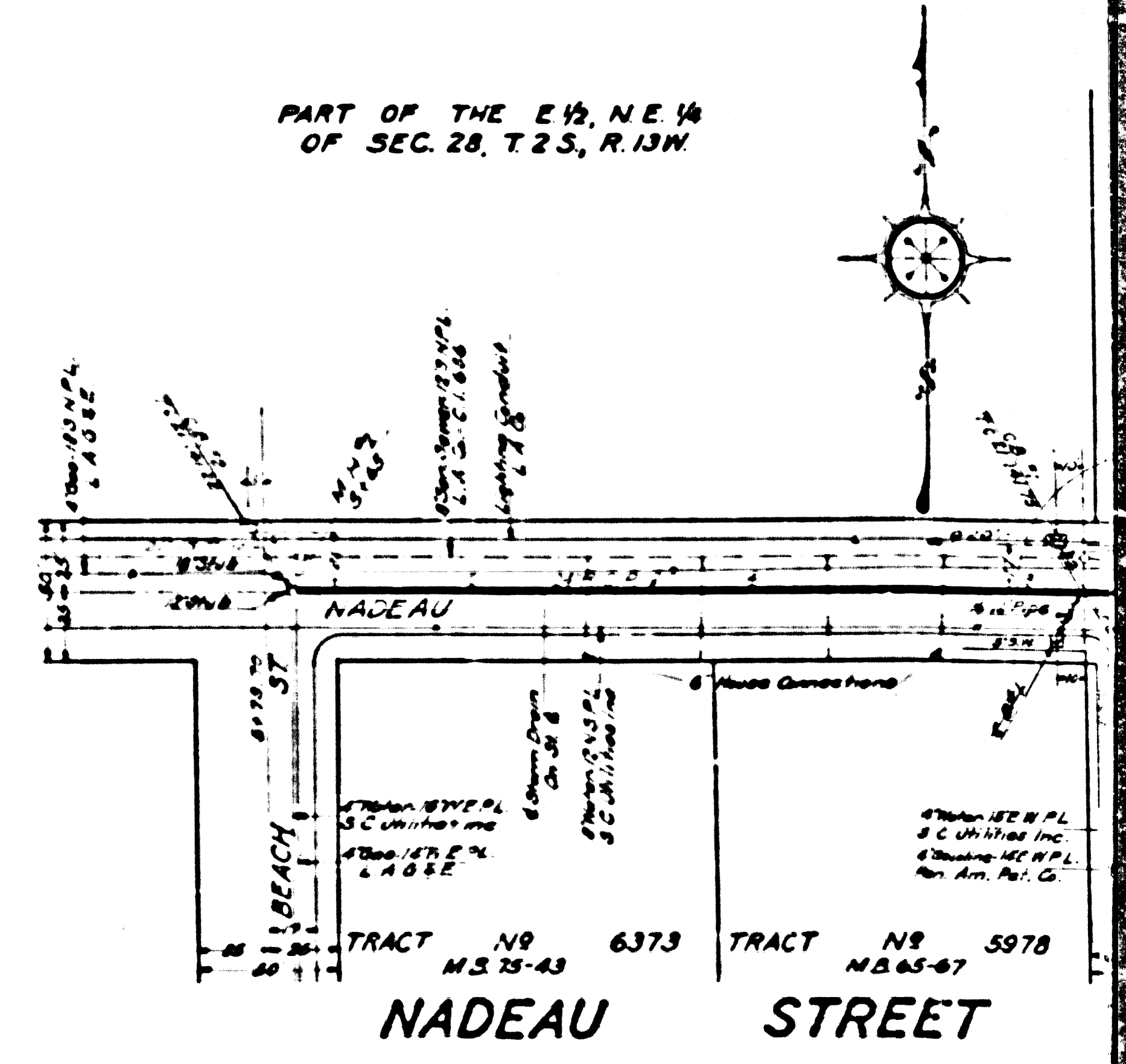
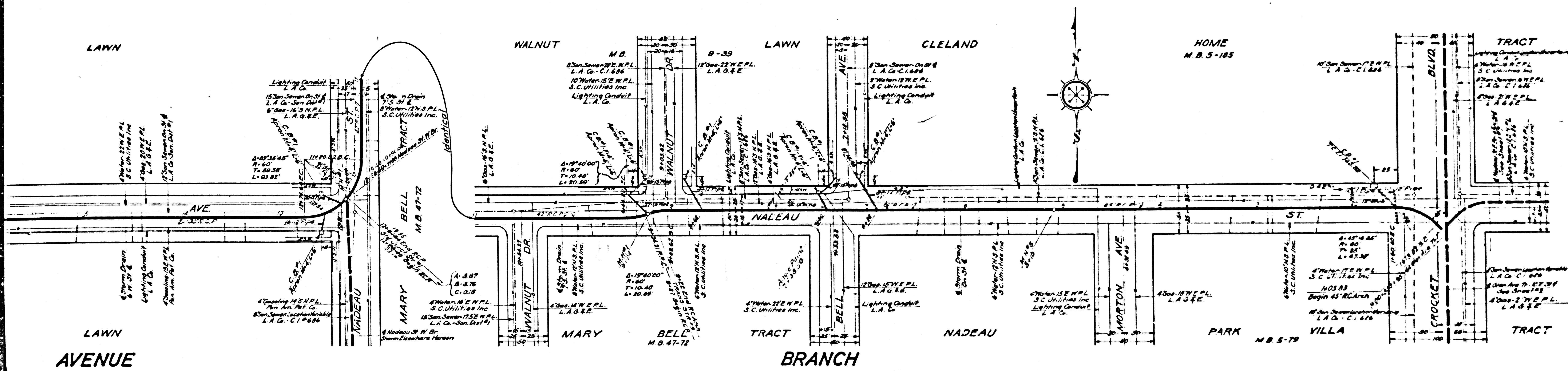
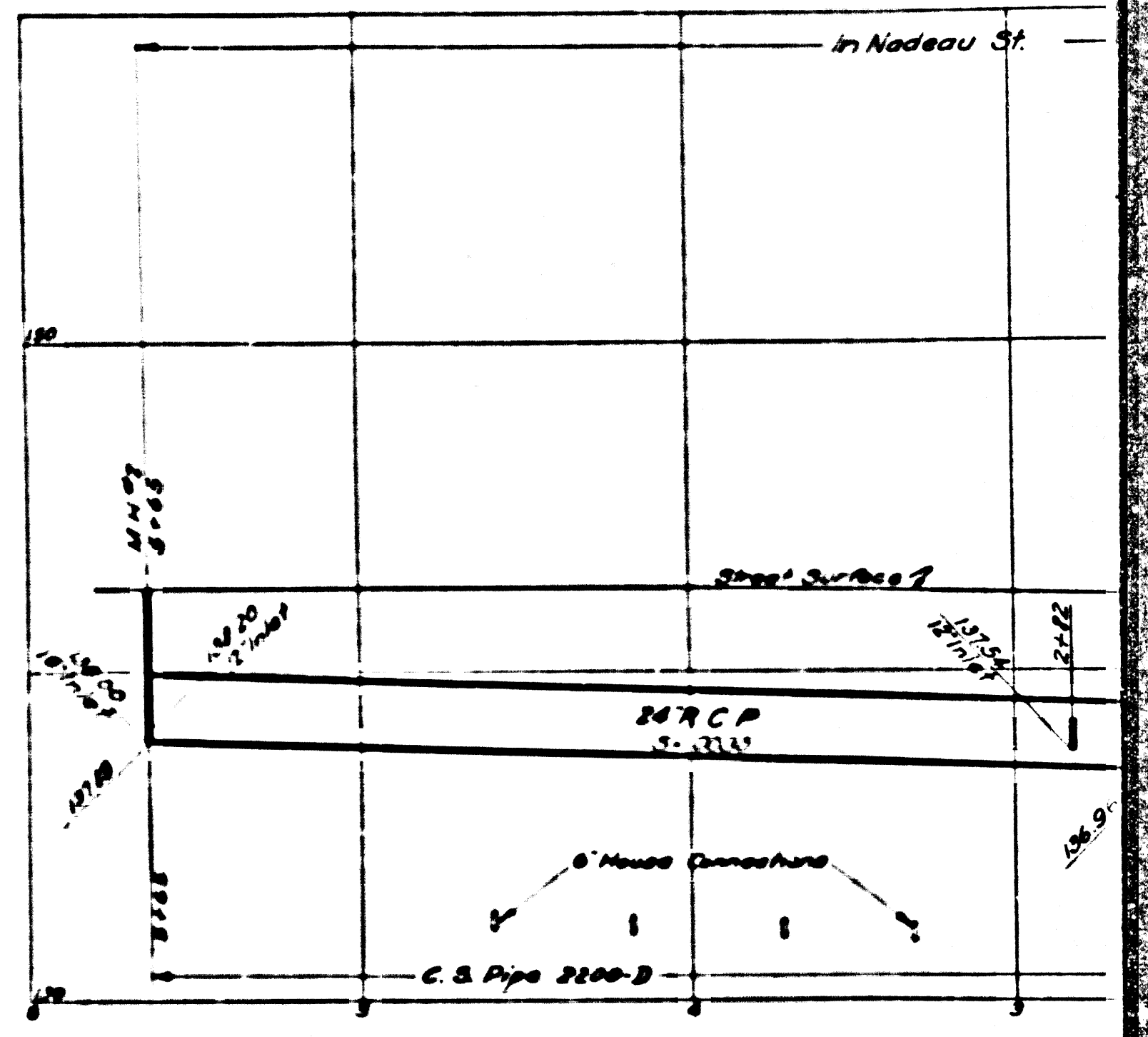
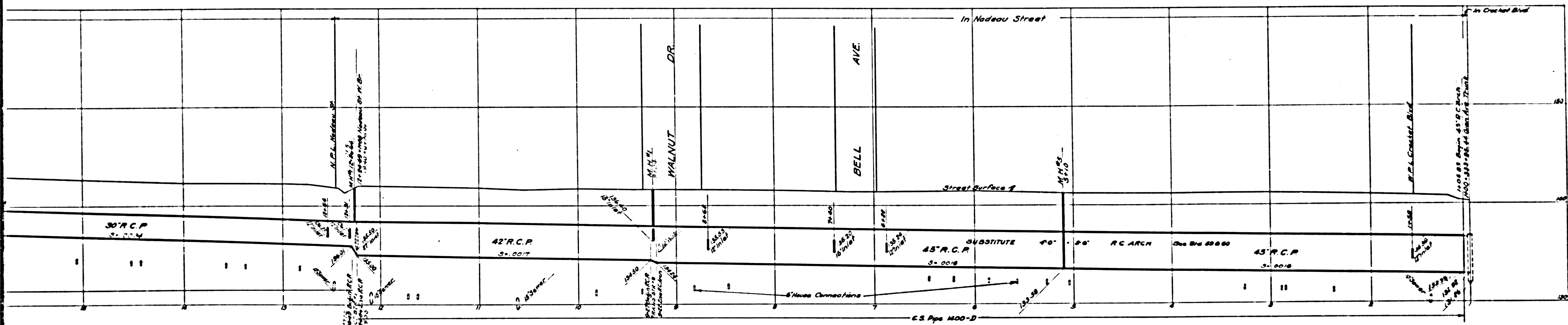


See Change of Plan 2000-171



CSB-1171-6  
A5 OF A5





CSB-1171-6  
A2 OF A5