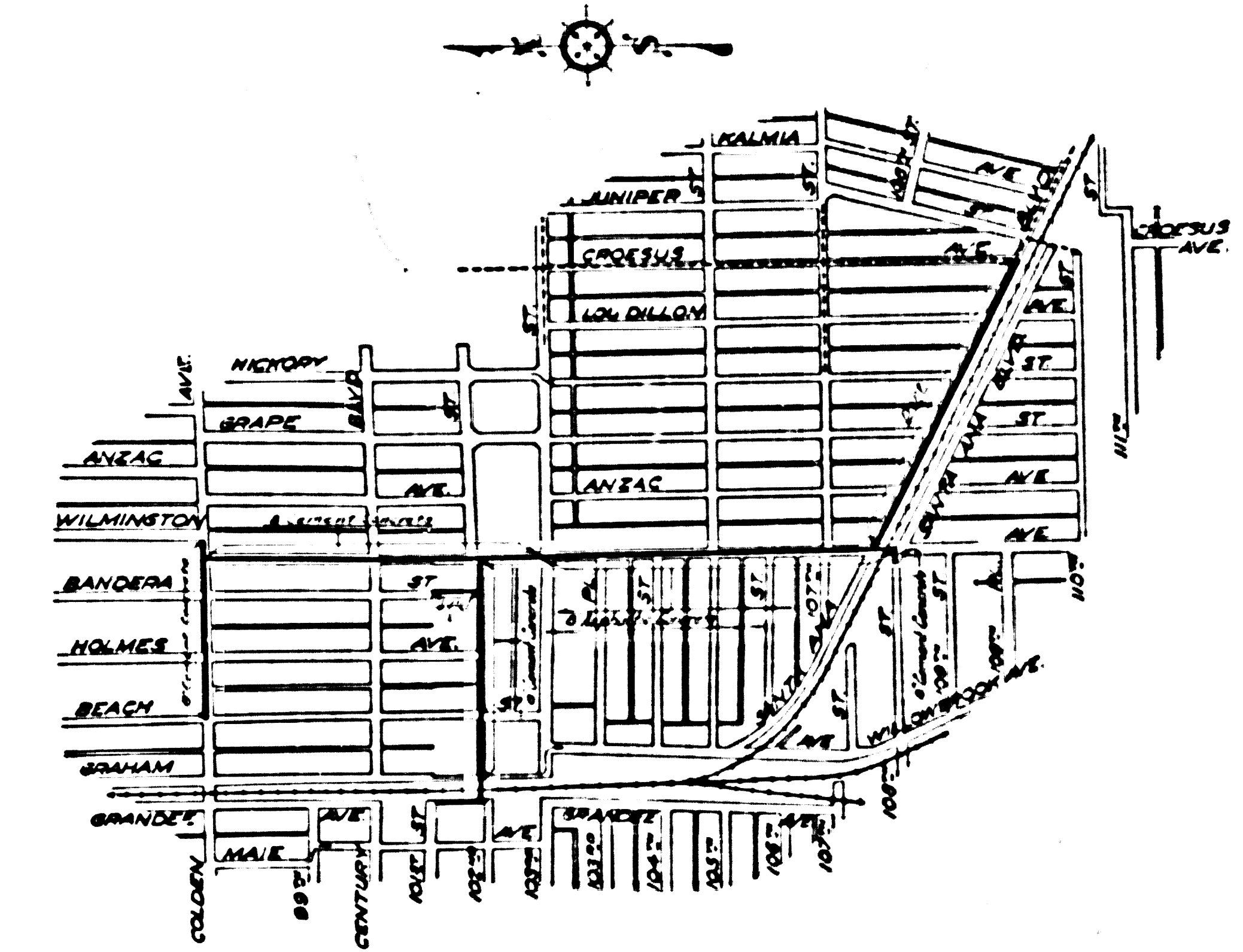
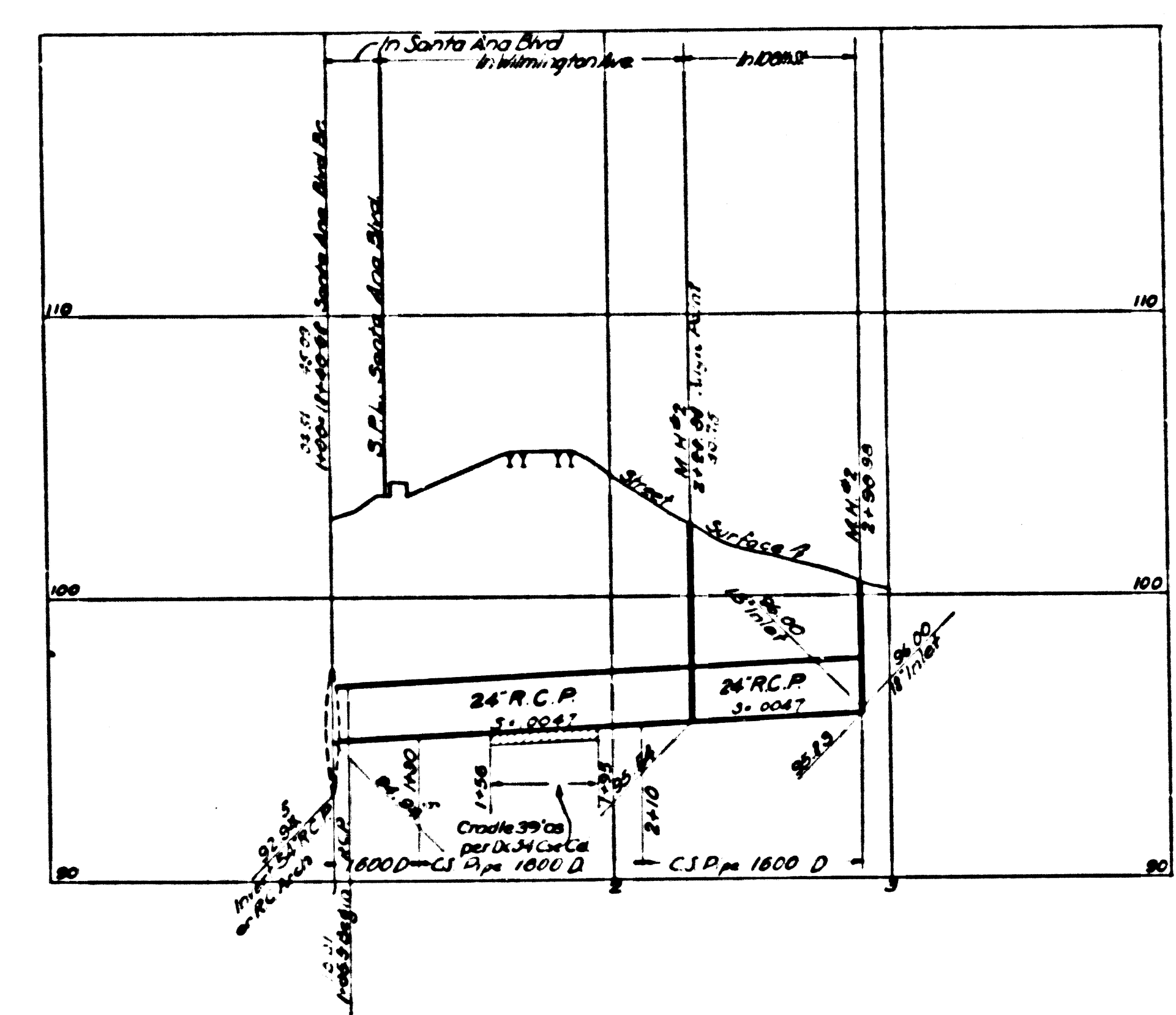
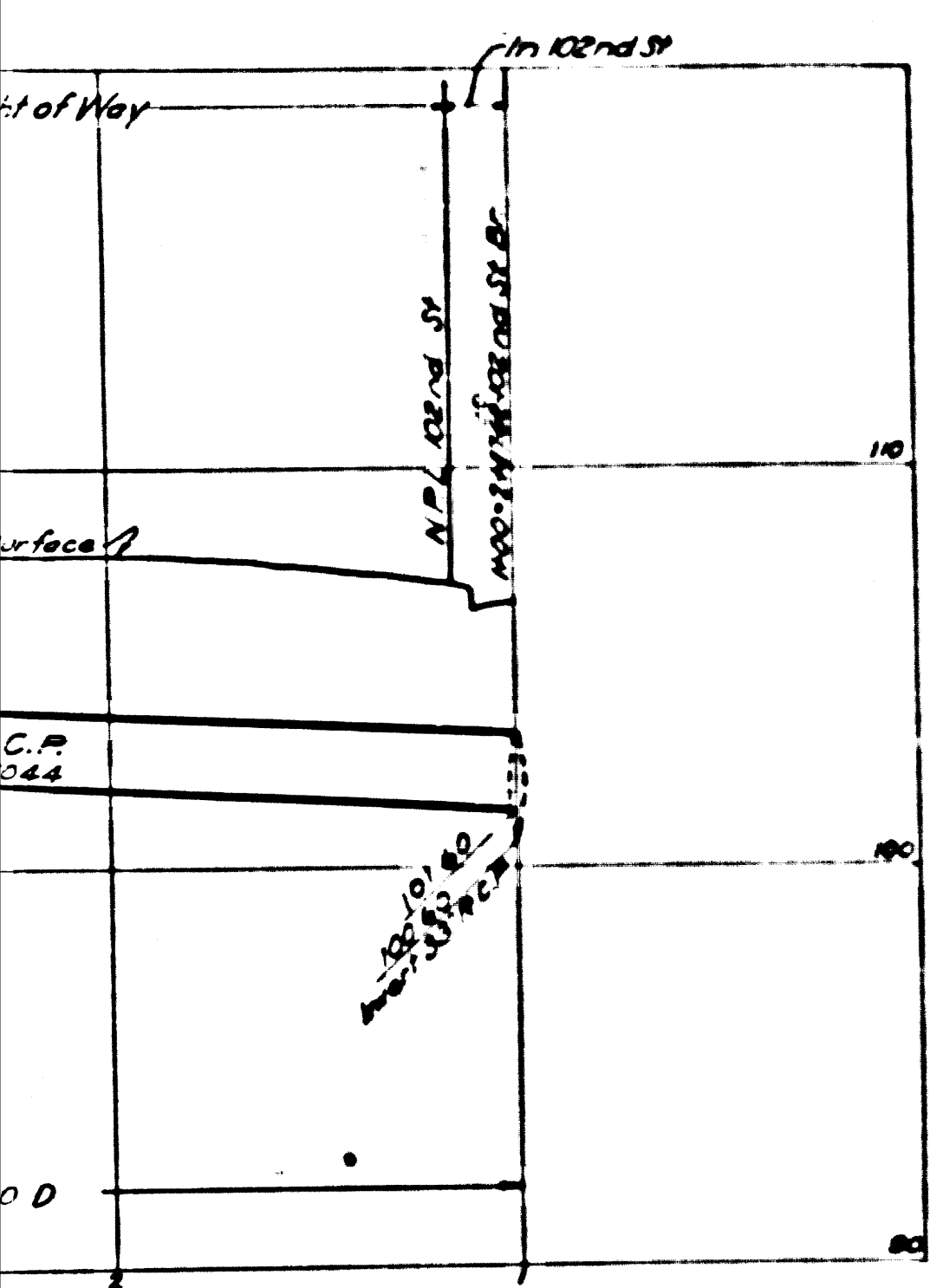
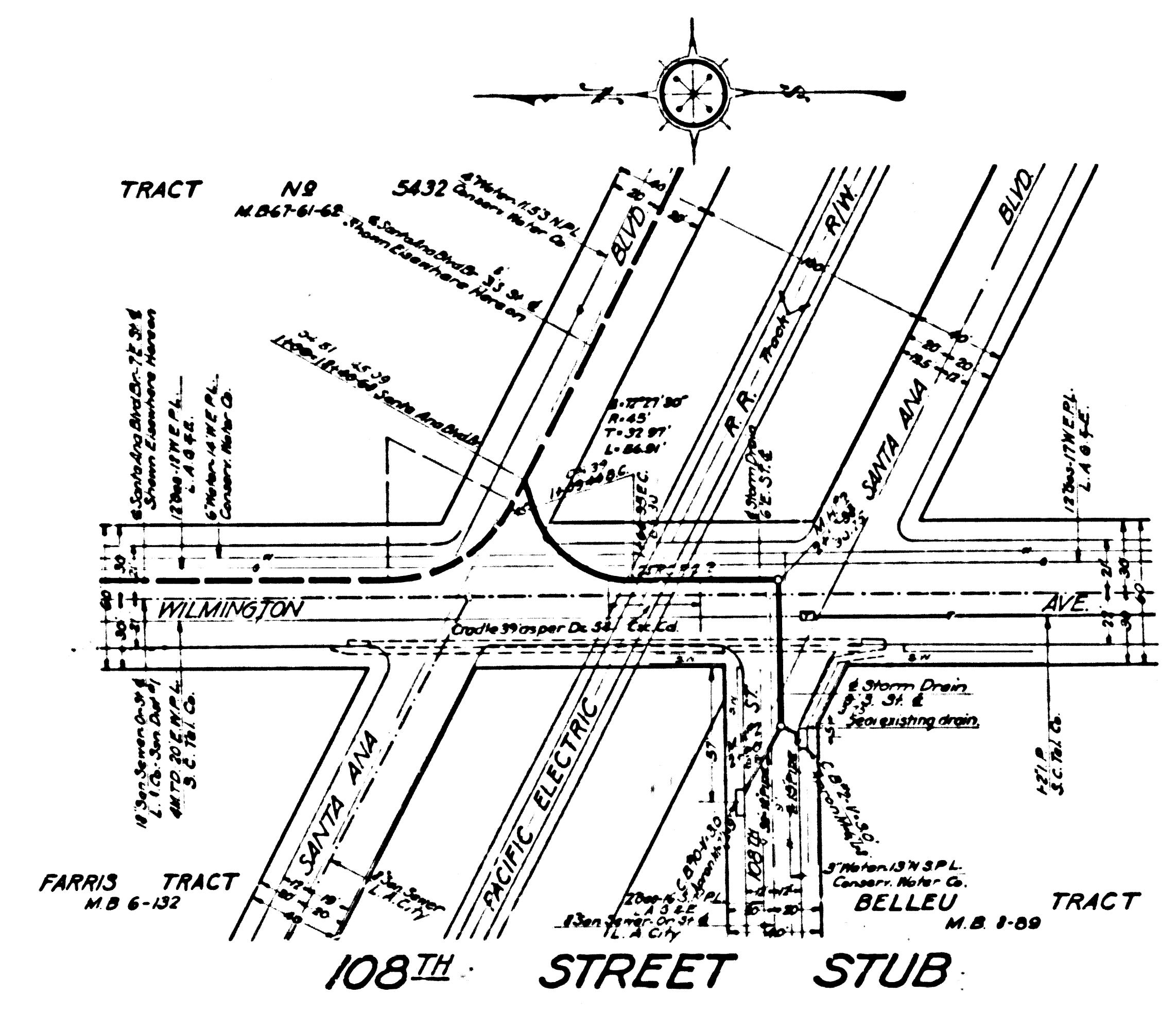
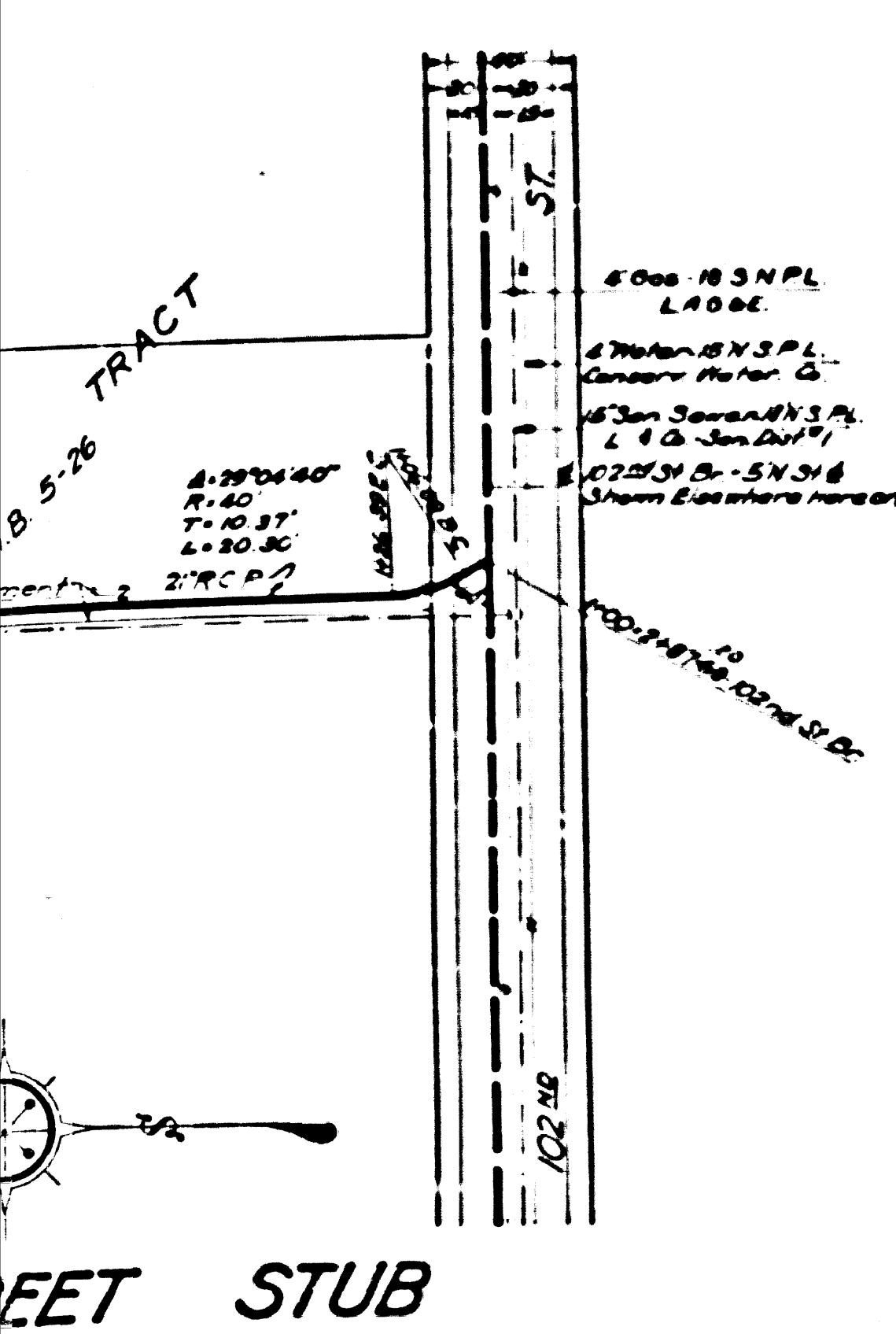


Trim prints to this line



KEY MAP
SHOWING DRAINS AND RESURFACING



NOTES:

- Elevations are in feet above U.S.G.S. or mean Sea Level Datum.
- Stations of inlets and junctions refer to the intersections of the center lines of the inlets with the center line of the main drain.
- Elevations of all inlets except catch basin inlets into box sections refer to the flow lines of the inlets produced on their gradients to the vertical plane thru the center line of the main drain. Elevations of catch basin inlets into box sections refer to the intersections of the flow lines of these inlets with the inside wall of the box section.
- For details of all standard structures see Standard Plans.
- All pipe not otherwise specified shall be plain cement pipe.
- All stubs to be one length of pipe with ends sealed with 2" red wood planking, unless otherwise specified.
- Catch basins shall be built with a curb face of 10" or more which shall include a minimum depression at opening of 4" below gutter grade, unless otherwise specified.
- Sanitary sewers crossing storm drains, shown on profile with less than two feet clearance, are to be encased as per S-6 for a length equal to the width of conduit trench. In addition if less than 1/8 ft. clearance sewers must be of cast iron pipe and encased as noted above.

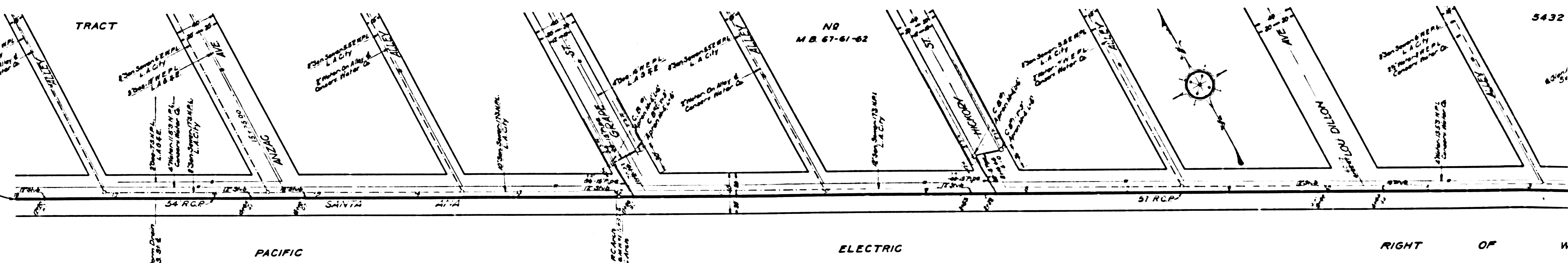
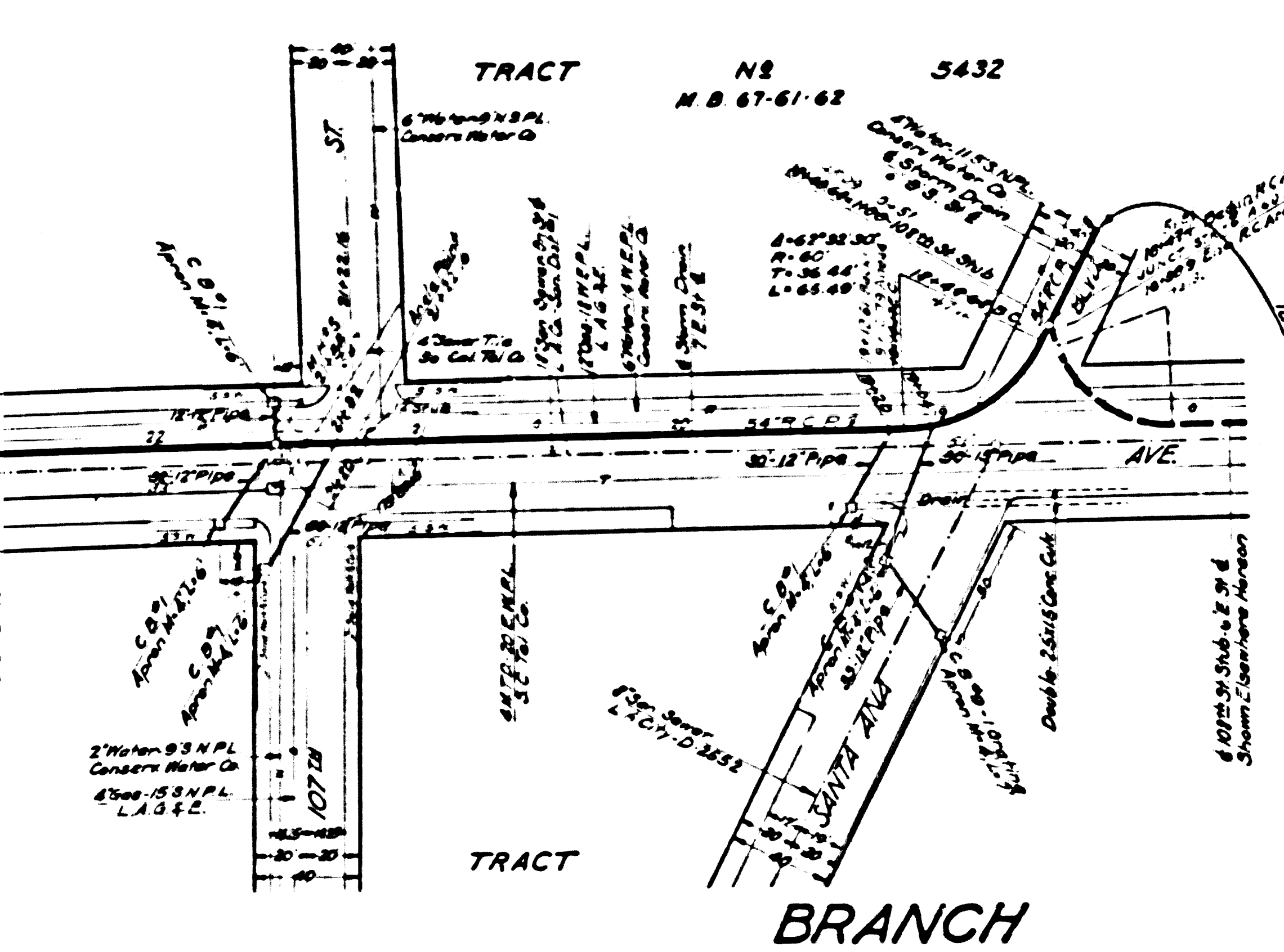
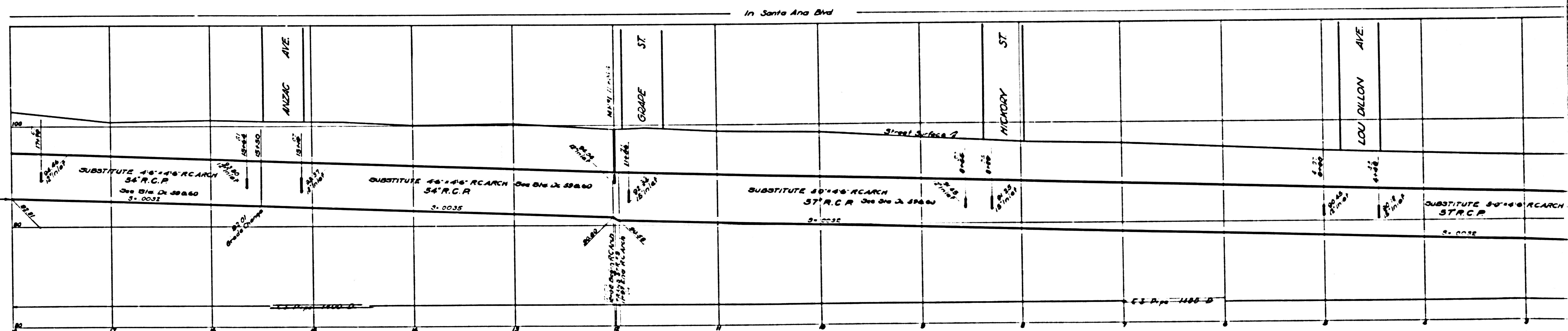
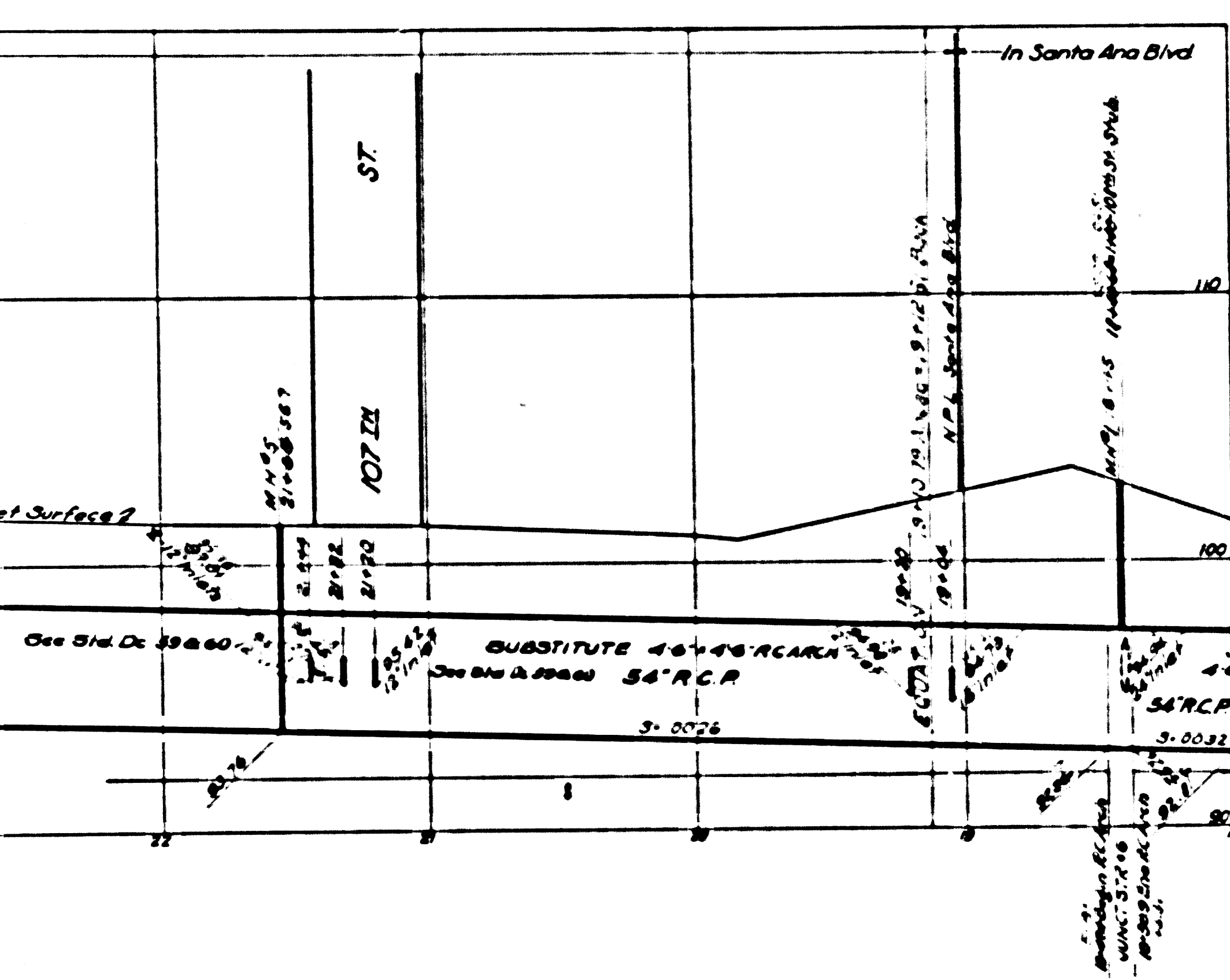
**GLEN AVENUE
DRAINAGE SYSTEM**
OF THE COUNTY OF LOS ANGELES, CALIFORNIA
PLAN AND PROFILE OF
SANTA ANA BLVD. BRANCH
WILMINGTON AVE. STUB
102ND. ST. BRANCH
BANDERA ST. STUB
108TH. ST. STUB

SCALE 1"=40' HORIZONTAL
1"=4' VERTICAL
NOVEMBER 1935
ALFRED JONES COUNTY SURVEYOR
RECOMMENDED [Signature] APPROVED [Signature]

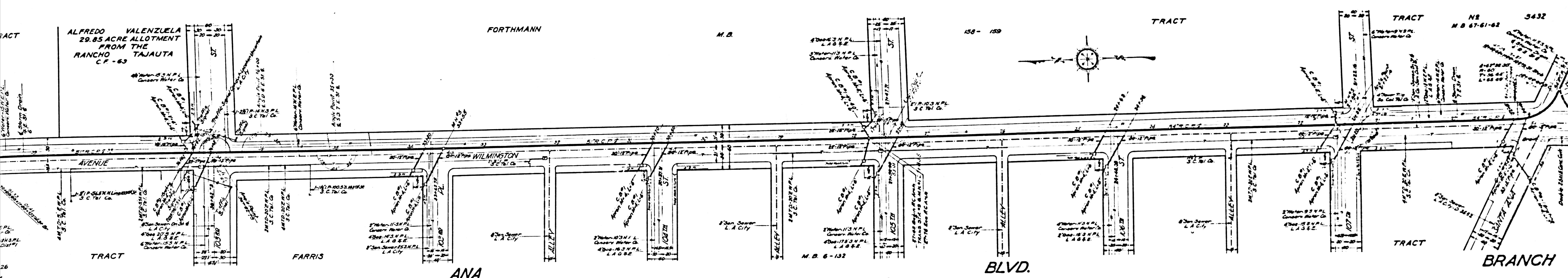
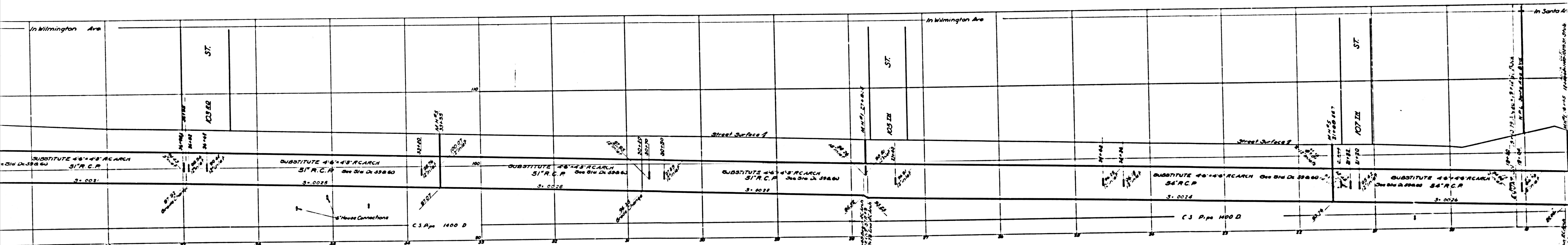
REFERENCE	DESIGNED	DATE
F. B. 405	L. Longacre	NOV. 1931
L. B. 670	P. H. Mumtack	MAY 1933
November 6, 1935 7-22-35	E. E. Mitchell	MAR 1934

Trim prints to this line

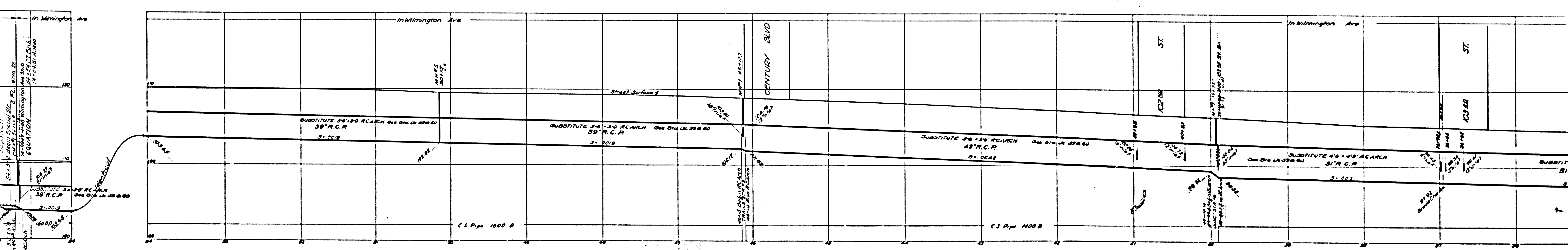
CSB-1171-9
A1 OF A7



PACIFIC ELECTRIC RIGHT OF WAY



CSB-1171-9
A5 OF A7

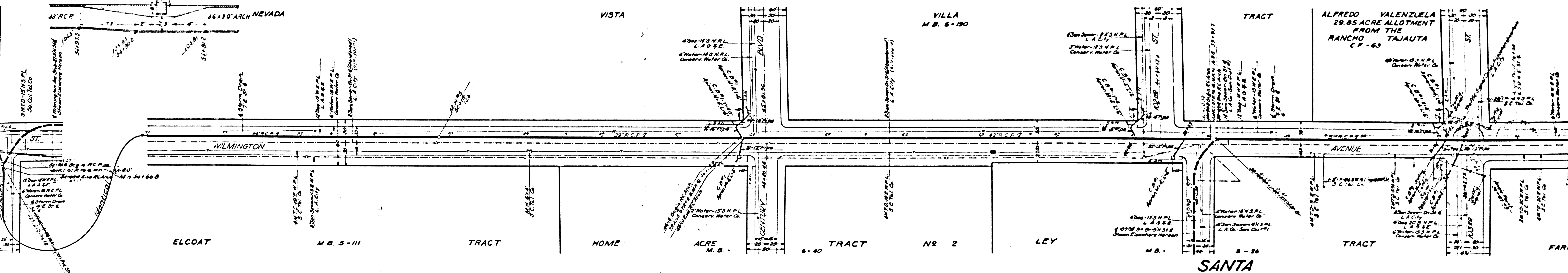
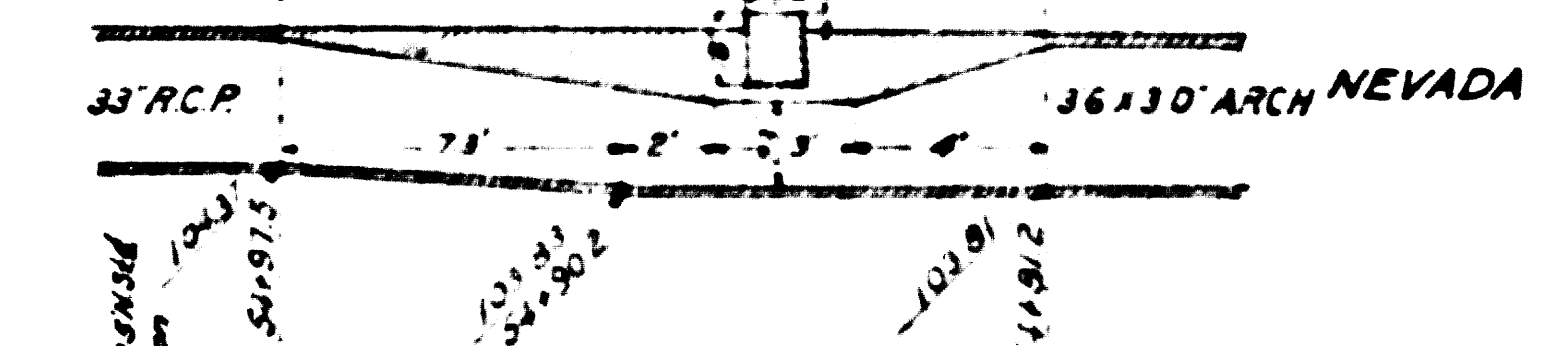


SPECIAL STRUCTURE TOP VIEW



Sketch from sketches of A.C. Briggs, Inspector, M & Bell, Chief Inspector

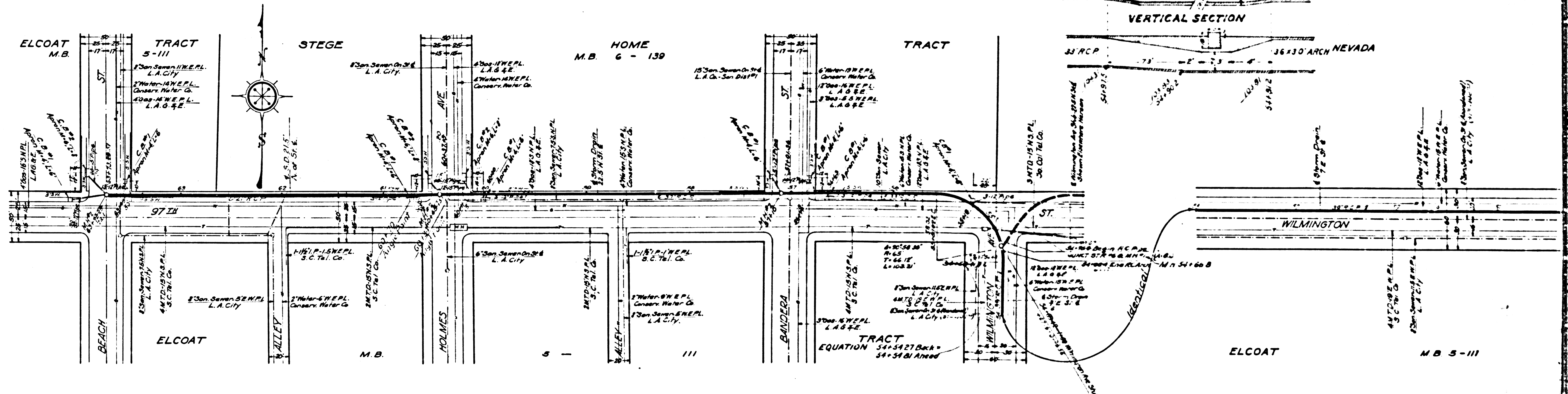
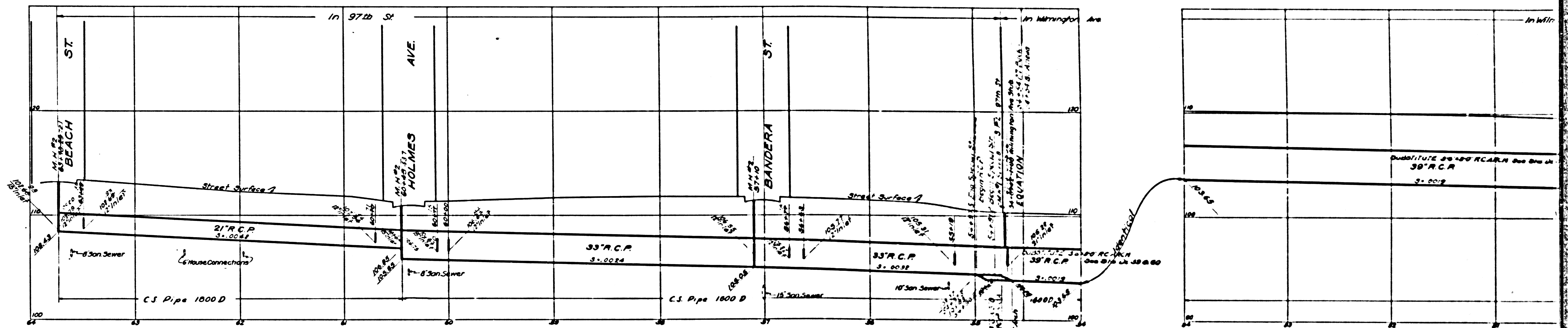
VERTICAL SECTION



CSB-1171-9
A60FA7

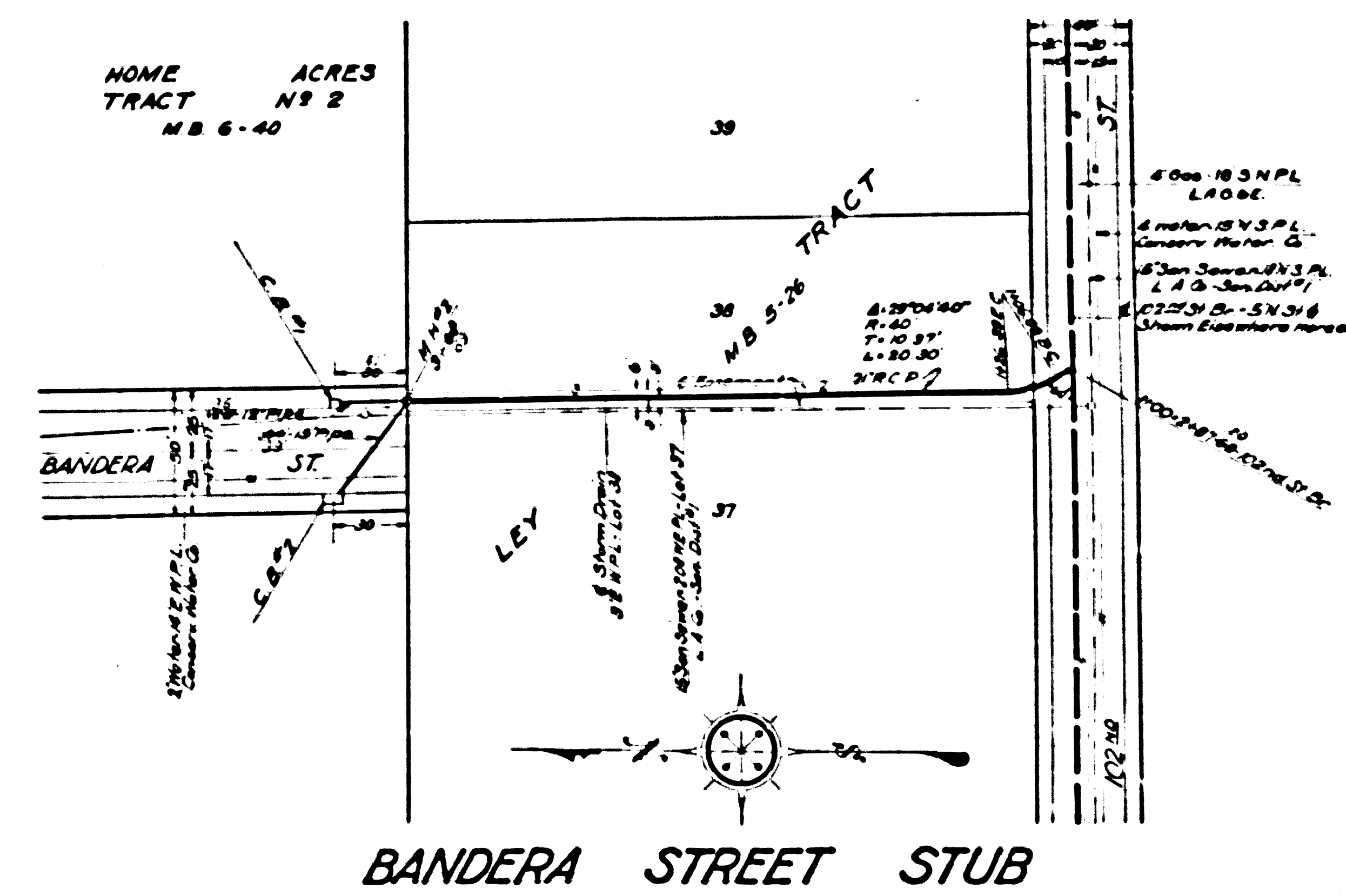
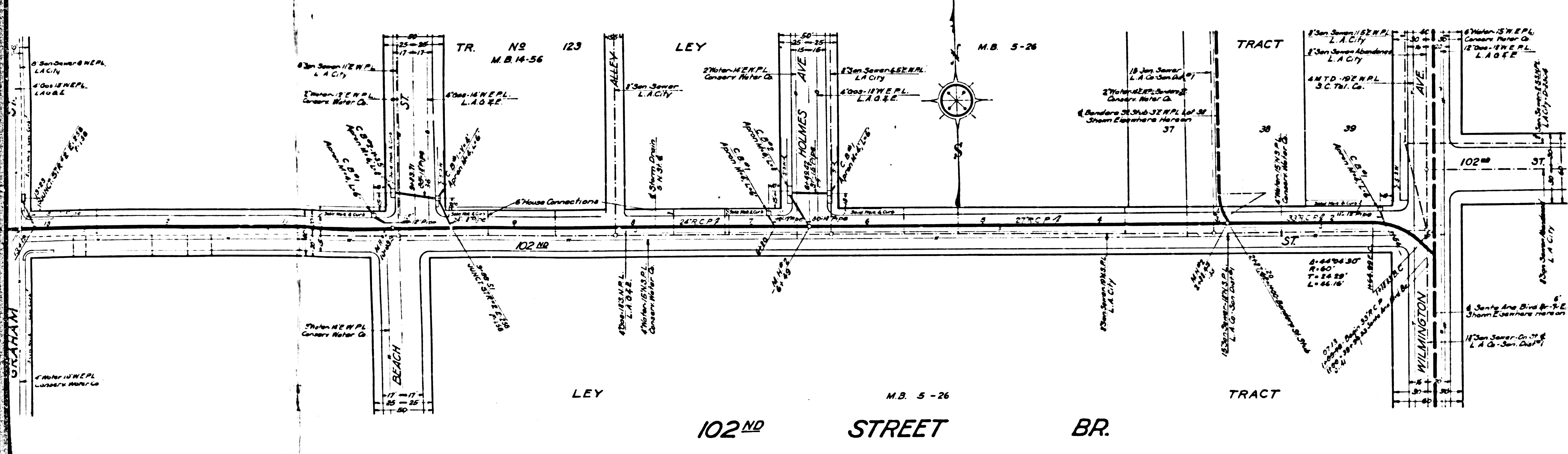
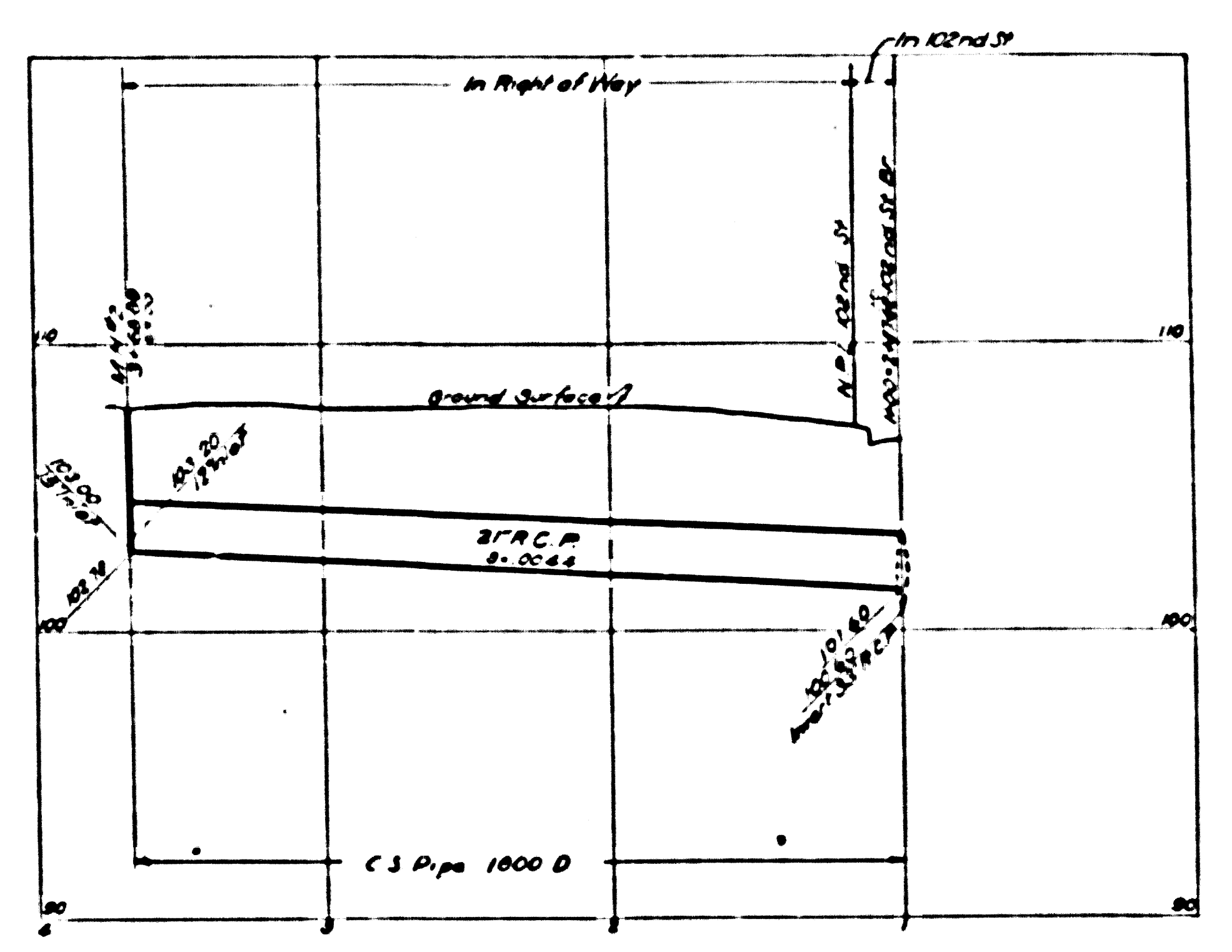
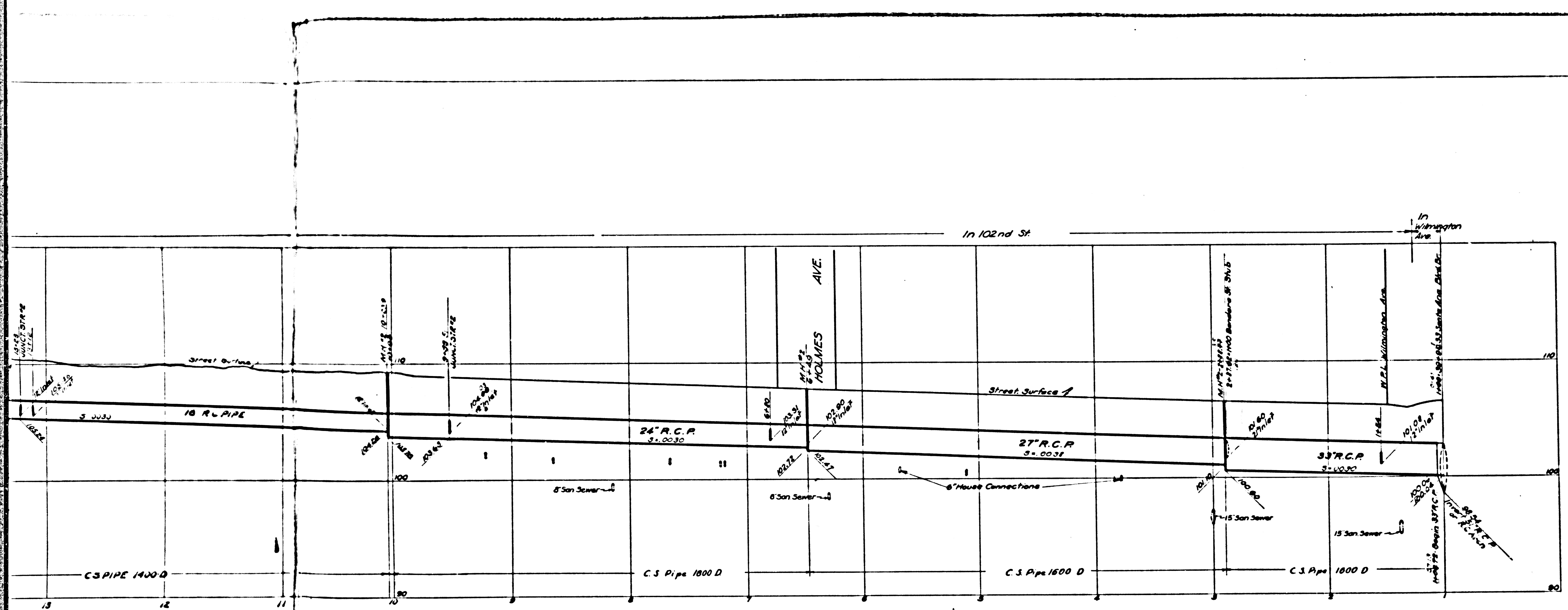
Trim prints to this line

INDEX
Lines shown on this sheet
Issued from left to right
PLAN AND PROFILE
SANTA ANA BLVD BR
WILMINGTON AVE STUB
102ND ST. BR
BANDERA ST. STUB
108TH ST. STUB



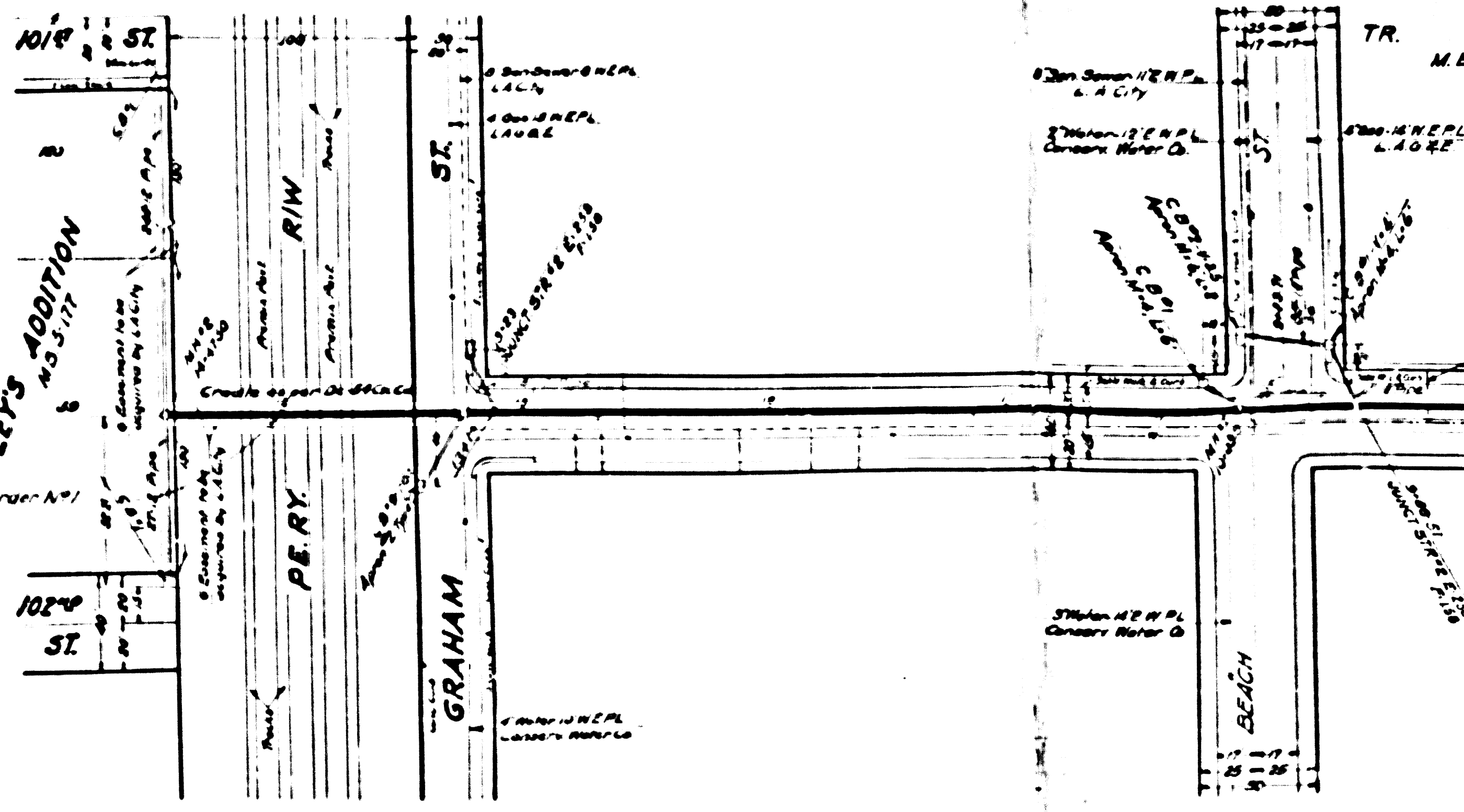
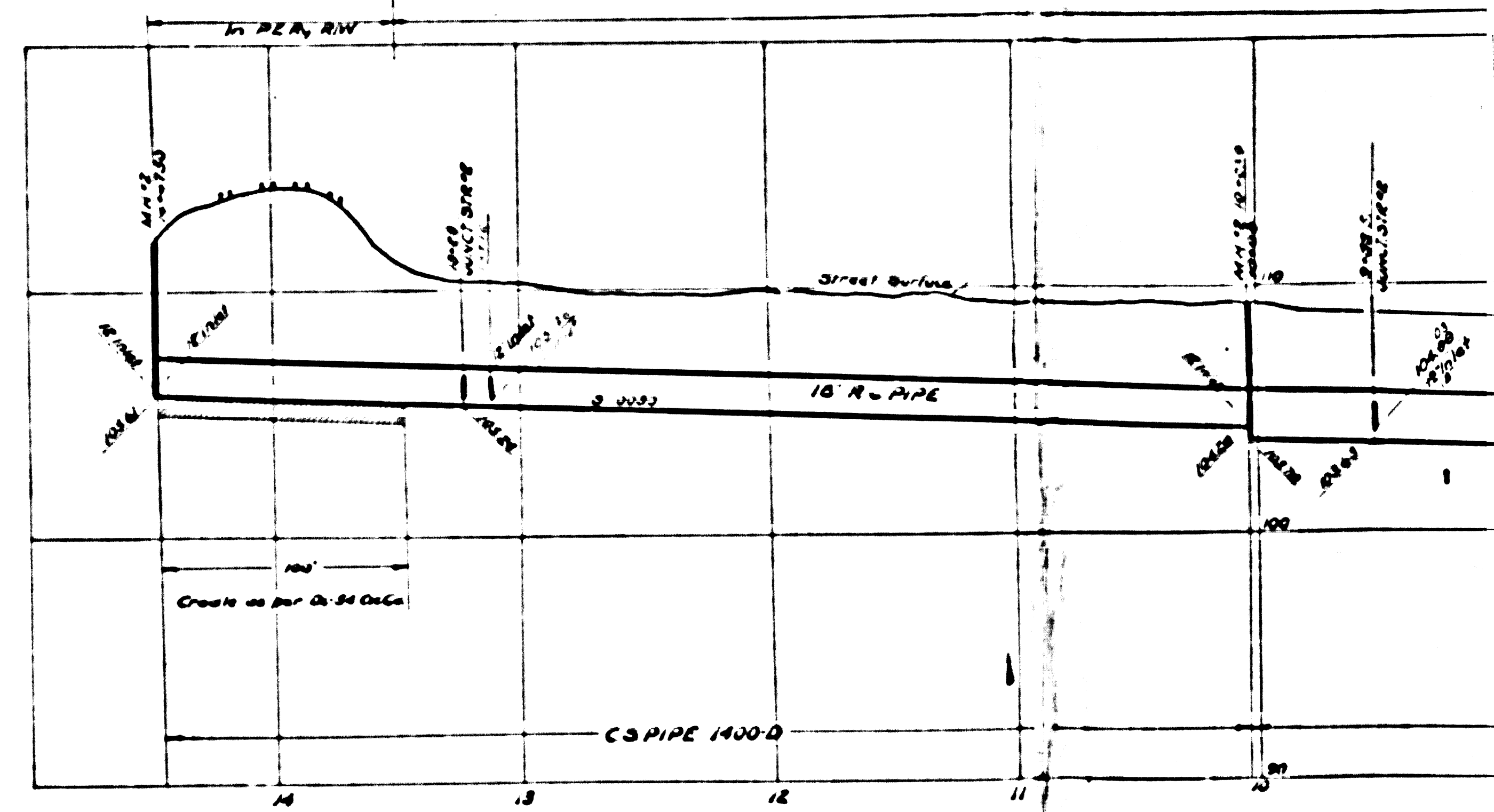
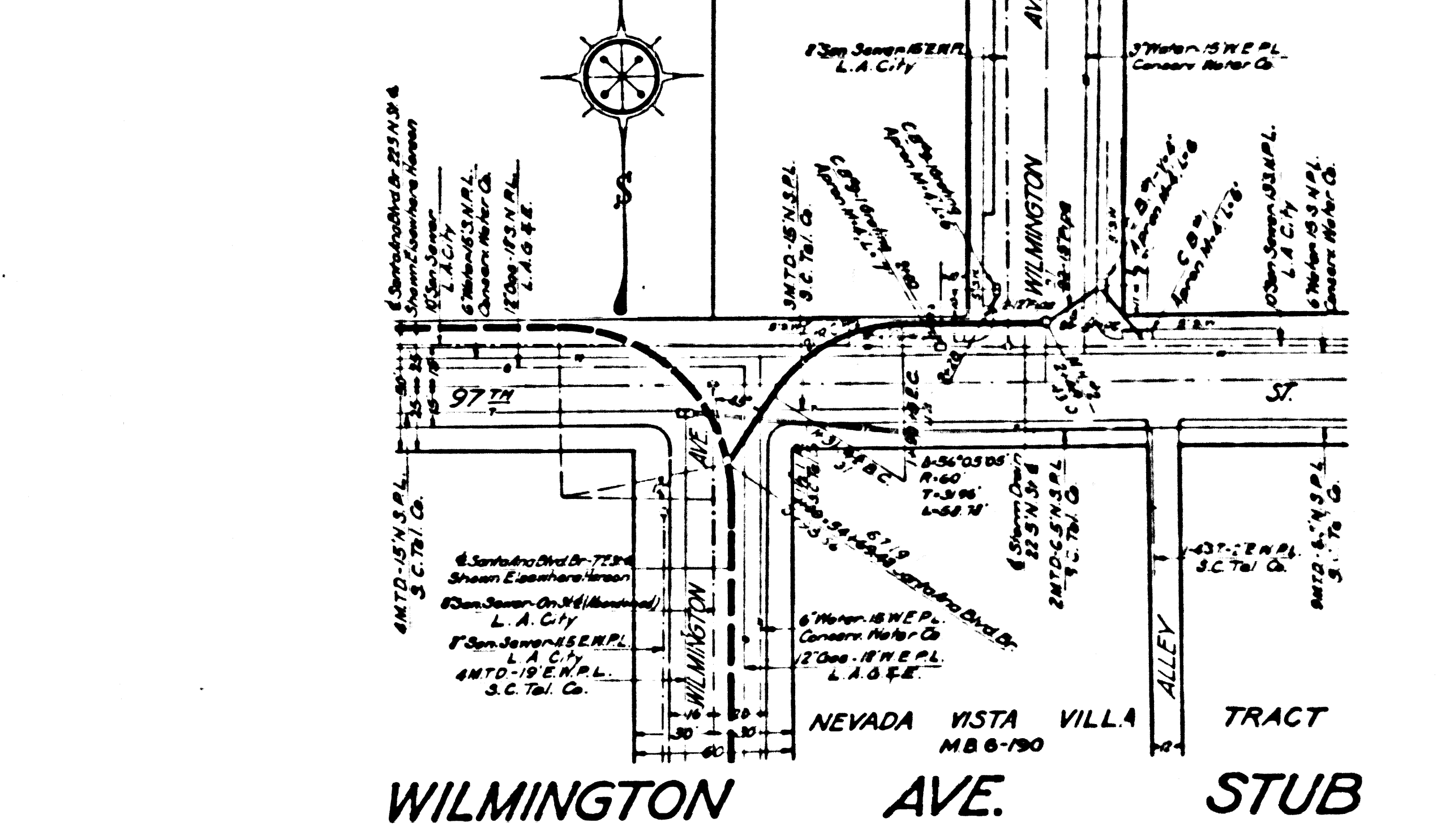
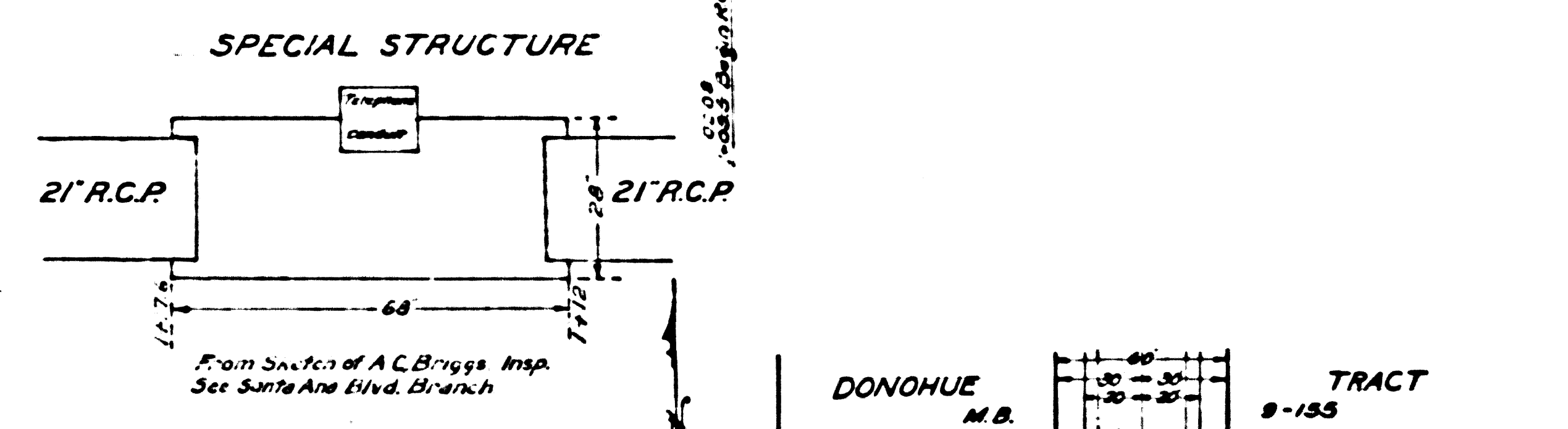
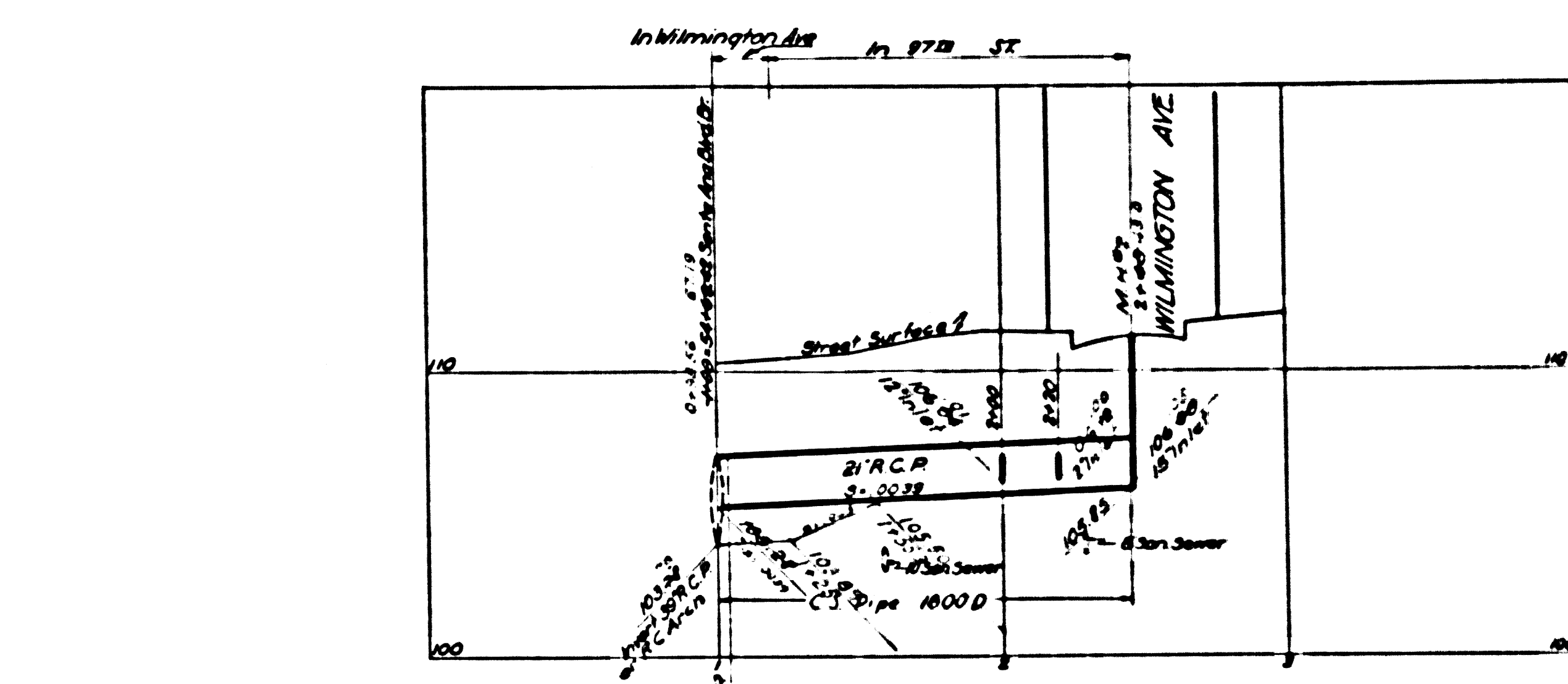
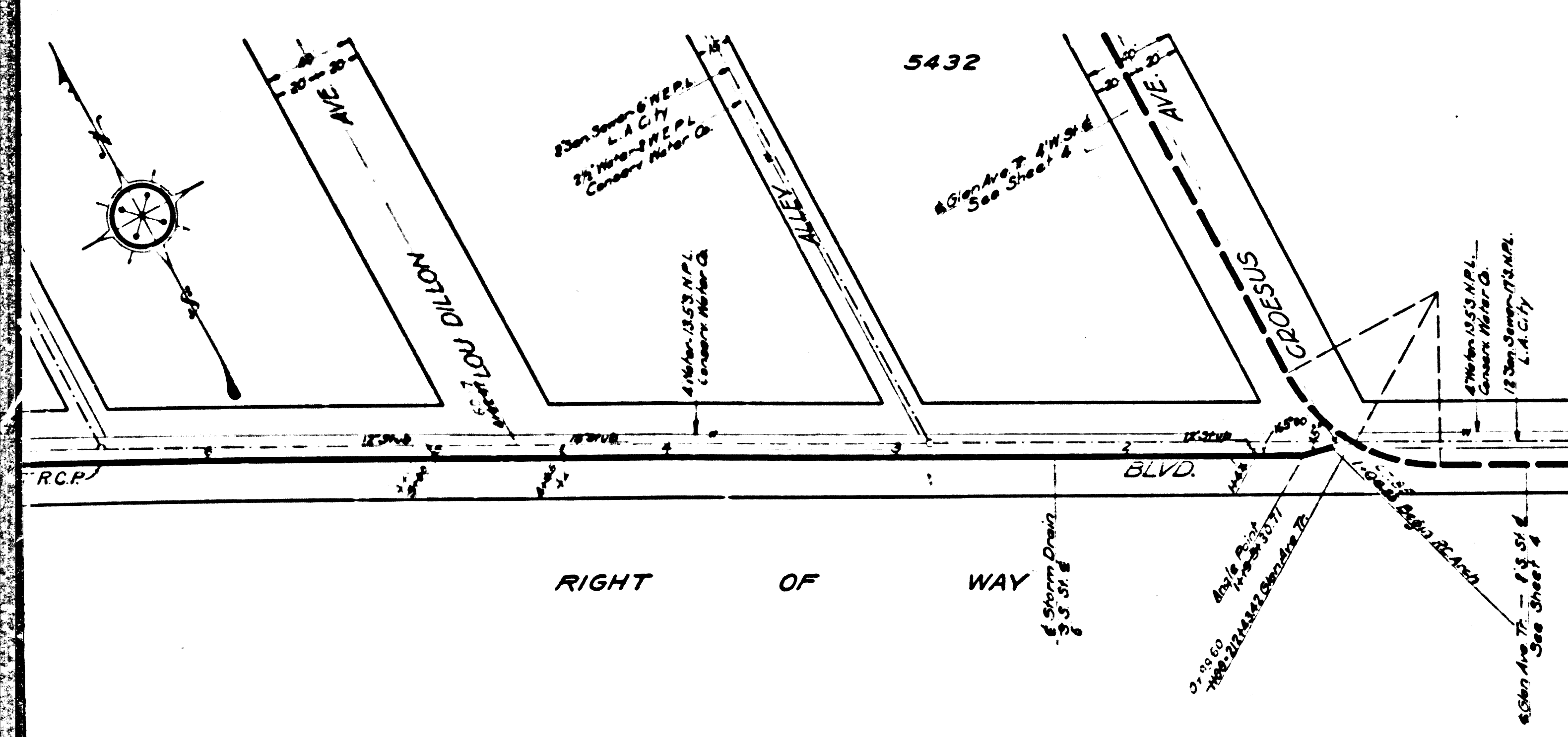
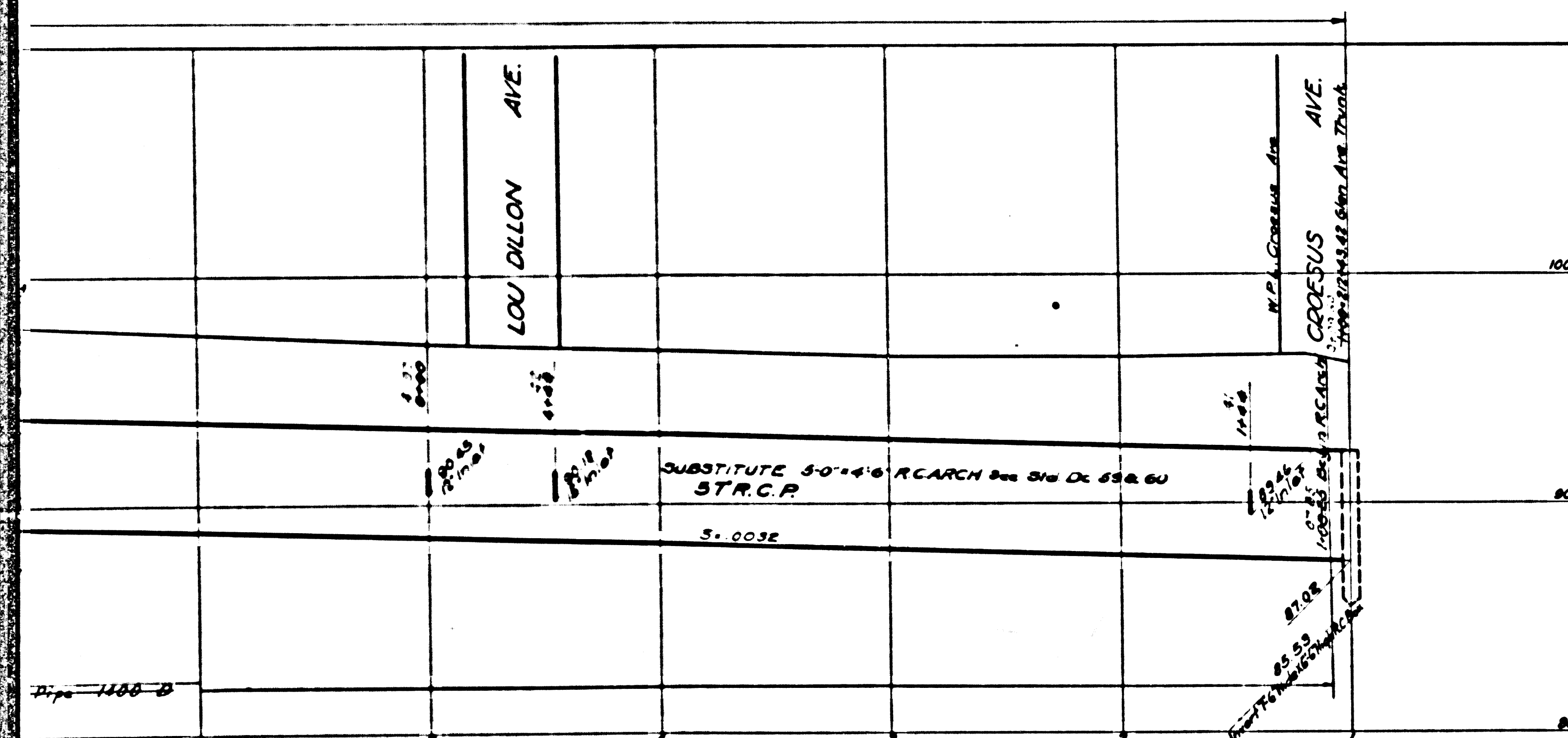
Trim prints to this line

CSB-1171-9
AT OF A 7



CSB-1171-9
A2 OF A 7

FARRIS T.
M.B. 6-132



CSB-1171-9
A3 OF A7