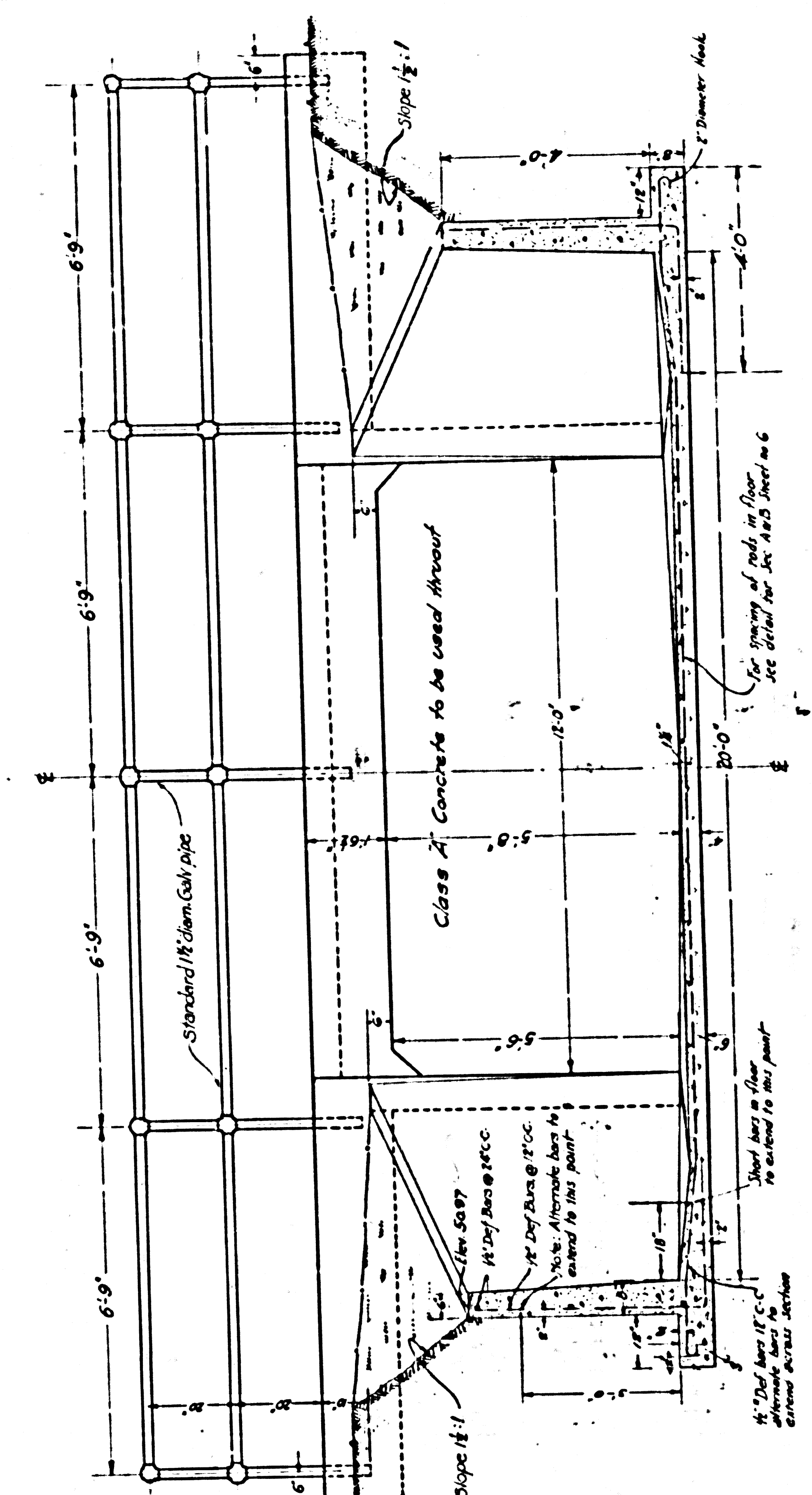
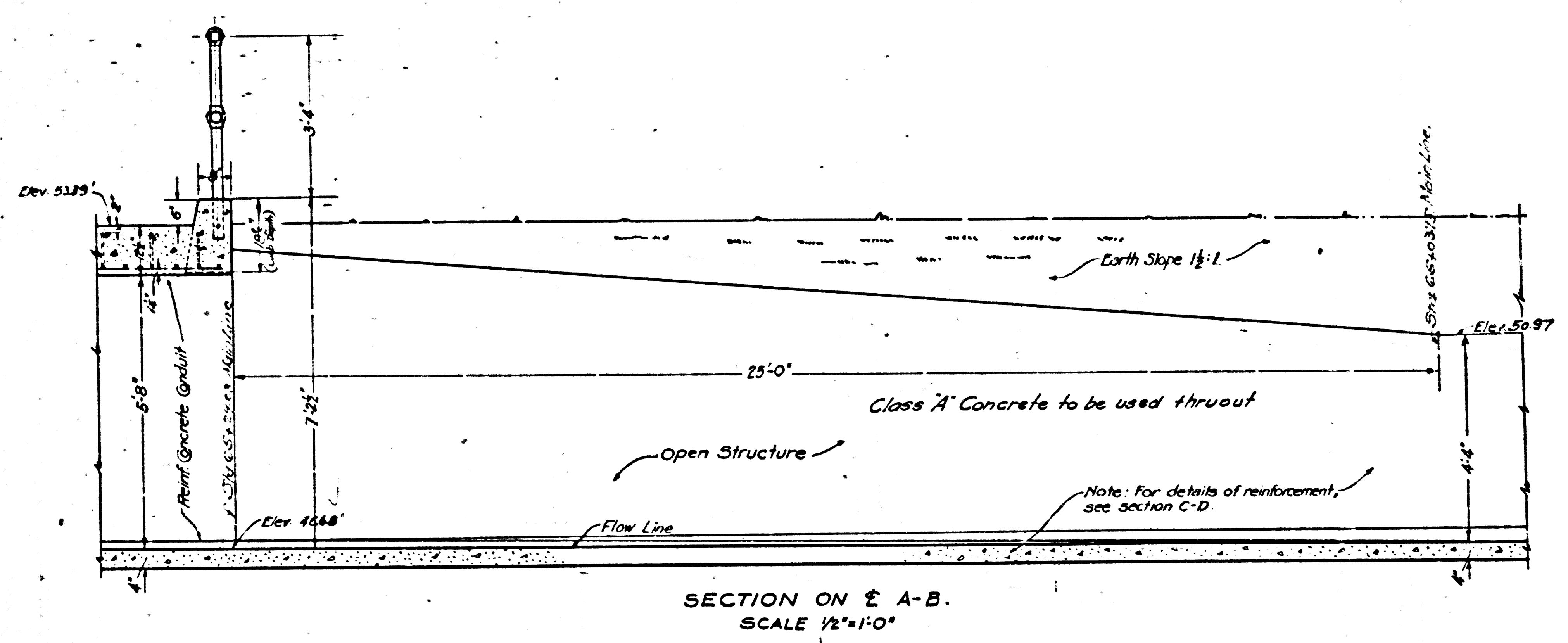
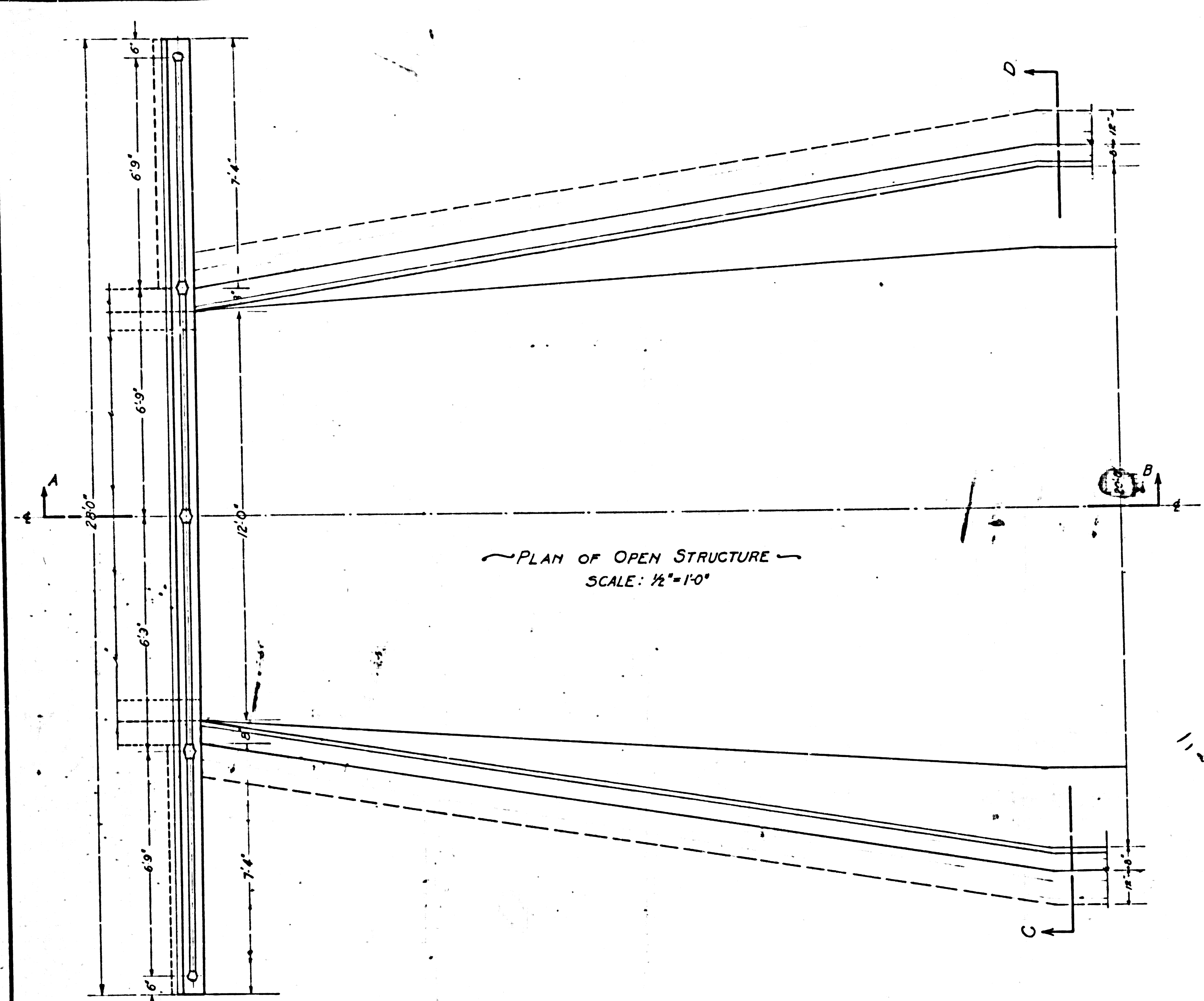


0811-B 9M 1AM 2POVAVRUE YTIUOD
 213E3R SI TO OI 9M 133H2



**DRAINAGE DISTRICT
 IMPROVEMENT NO 8**

OF THE
 COUNTY OF LOS ANGELES
 DETAILS OF TRANSITION SECTION
 AT WILLIAMS AND FLOWER STREETS
 OCTOBER 1923
 J.E. ROCKHOLD - COUNTY SURVEYOR
 SHEET 10 OF 12 SHEETS

Submitted: *A. Warren* Senior Engineer
 Approved: *J.E. Rockhold* County Surveyor
 Drawn by *A.T. Samworth*, Checked by *C.R. Compton*
 Approved as to form
 Edward T. Bishop
 County Counsel
 By *E.R. Anderson* Deputy

CSB-1180-10
 A1 OF A1

SHEET NO 10 OF 12 SHEETS
 COUNTY SURVEYOR'S OFFICE

0811-B 9M 1AM 2POVAVRUE YTIUOD
 213E3R SI TO OI 9M 133H2

SHEET NO 10 OF 12 SHEETS
 COUNTY SURVEYOR'S OFFICE