

FOR TOPOGRAPHY EAST, SEE SHEET N93.

**DRAINAGE DISTRICT  
IMPROVEMENT NO 8**

OF THE  
COUNTY OF LOS ANGELES  
TOPOGRAPHICAL MAP OF  
PORTION OF DISTRICT WEST OF PRAIRIE AVE  
AND SOUTH OF ARBOR VITAE ST.  
SHOWING GENERAL LOCATION OF IMPROVEMENT  
SCALE: 1"=400'

SHEET 2 OF 12 SHEETS  
OCTOBER 1923  
J.E. ROCKHOLD - COUNTY SURVEYOR

Submitted: *R. L. Chas. S. ...*  
Approved: *J. E. Rockhold*  
County Surveyor  
Created by P.W.M. for  
Approval by E. T. Miller  
By: *E. T. Miller*  
Chief Deputy

Drawn by A.T. Sorenson  
Approved as to form  
Edward T. Bishop  
County Engineer  
By: *E. T. Miller*  
Chief Deputy

**LEGEND**

DISTRICT BOUNDARIES, SHOWN THIS  
LOCATION OF IMPROVEMENT

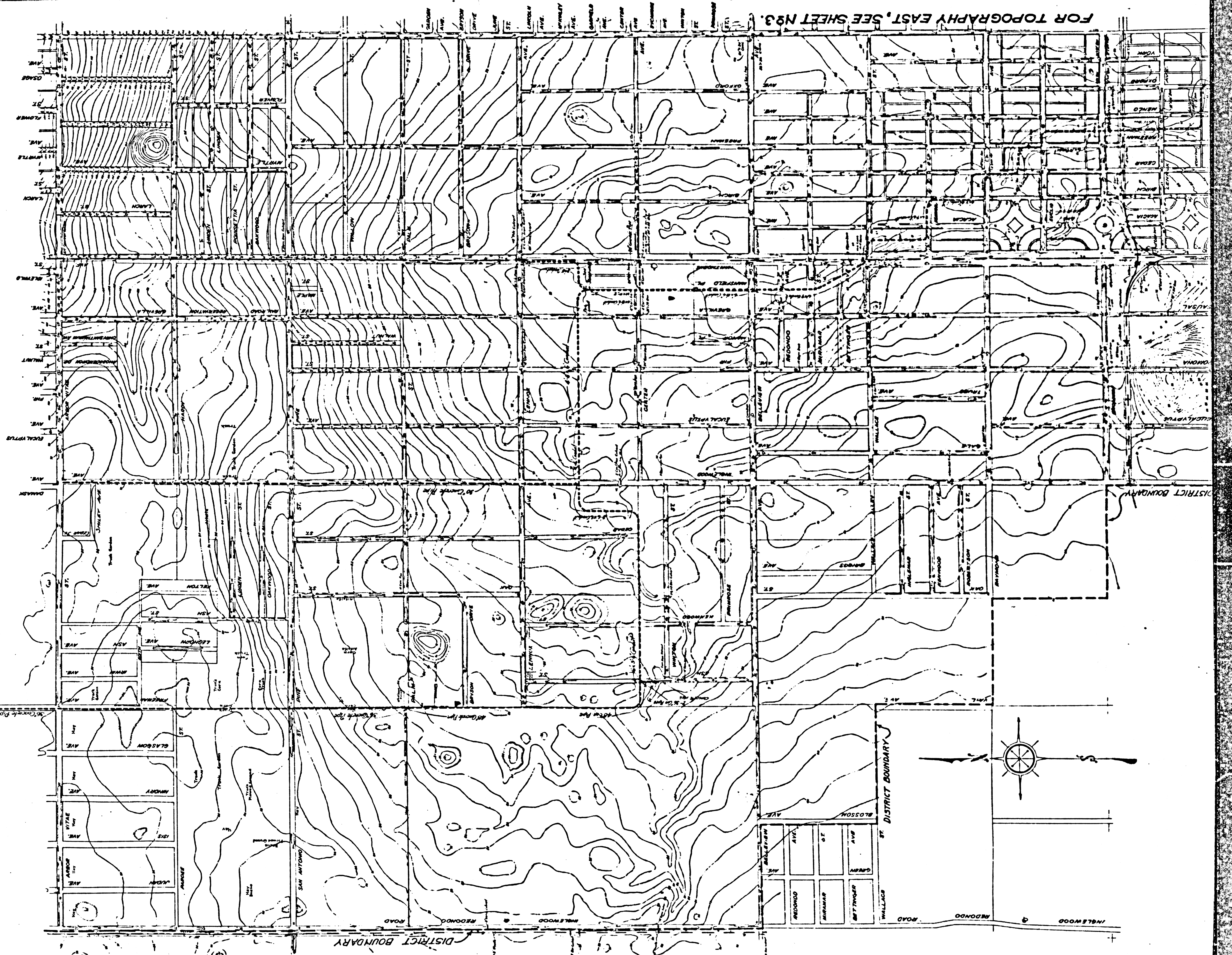
Reserve of this map filed in Blue Print Dept.  
at Register No. 225 Sht. 2.

CSB-1180-2  
A1 OF A2

SCALE 1" = 400'



FOR TOPOGRAPHY EAST, SEE SHEET N93.



CSB-1180-2  
A2 OF A2