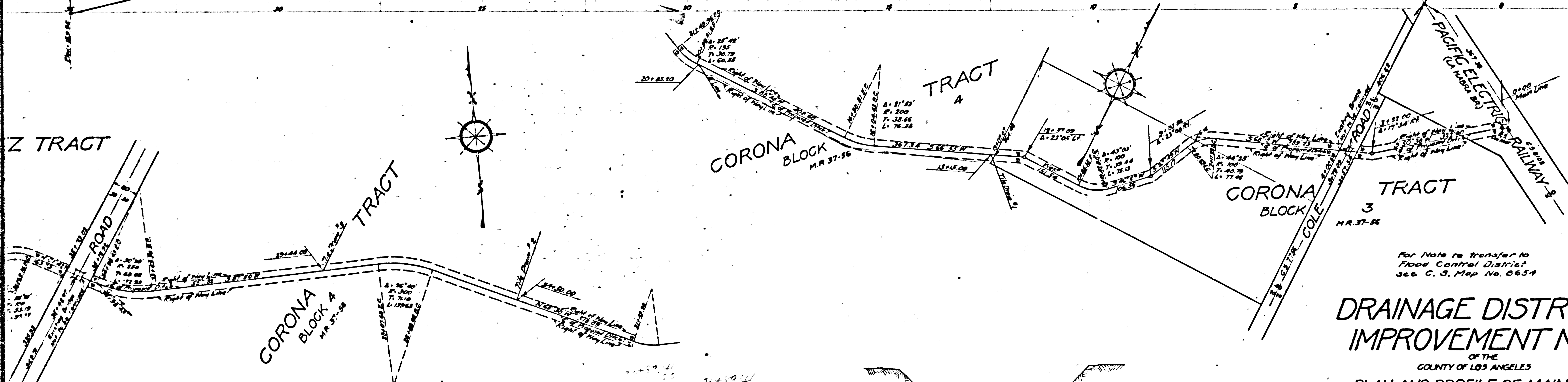


← SUPERCEDED BY SHEETS 2A & 2B.



**DRAINAGE DISTRICT  
IMPROVEMENT NO. 9**  
OF THE  
COUNTY OF LOS ANGELES

**PLAN AND PROFILE OF MAIN LINE.**  
SCALES: (VERTICAL 1" = 4'-0"  
(HORIZONTAL 1" = 100')  
SEPTEMBER 1924

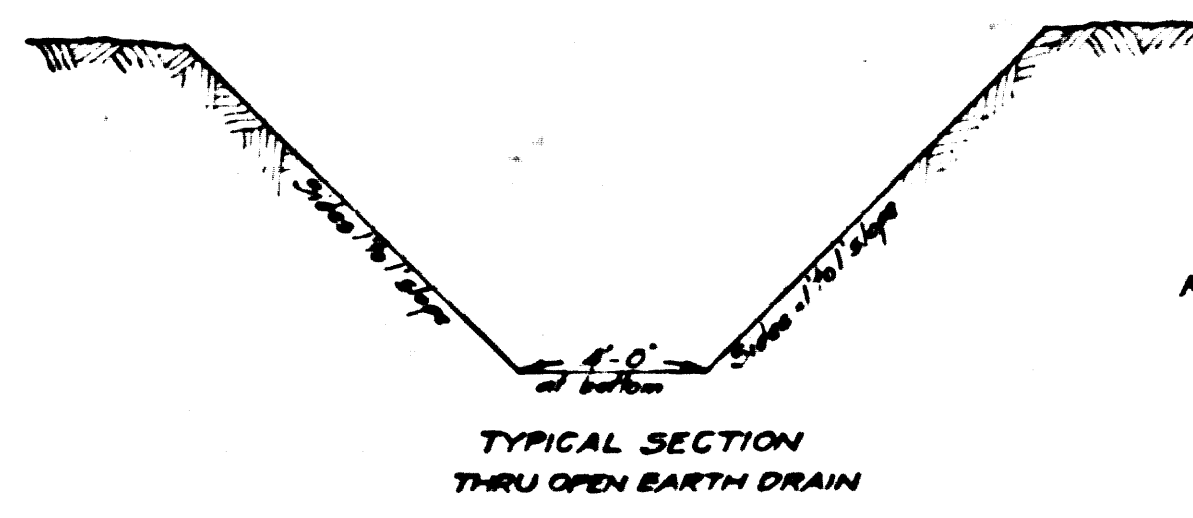
SHEET 2 OF 4 SHEETS  
J. E. ROCKHOLD - COUNTY SURVEYOR

Submitted by *Alvarez*  
Senior Engineer  
Approved by *J. E. Rockhold*  
County Surveyor

Approved as to form  
Edward T. Bishop  
County Counsel  
by *R. J. Matney*  
Deputy

DDI No. 9	
Drawn by <i>W.H.H.</i>	Sept. 1924
Traced by <i>W.H.H.</i>	Sept. 1924
Checked by <i>W.H.H.</i>	Sept. 1924

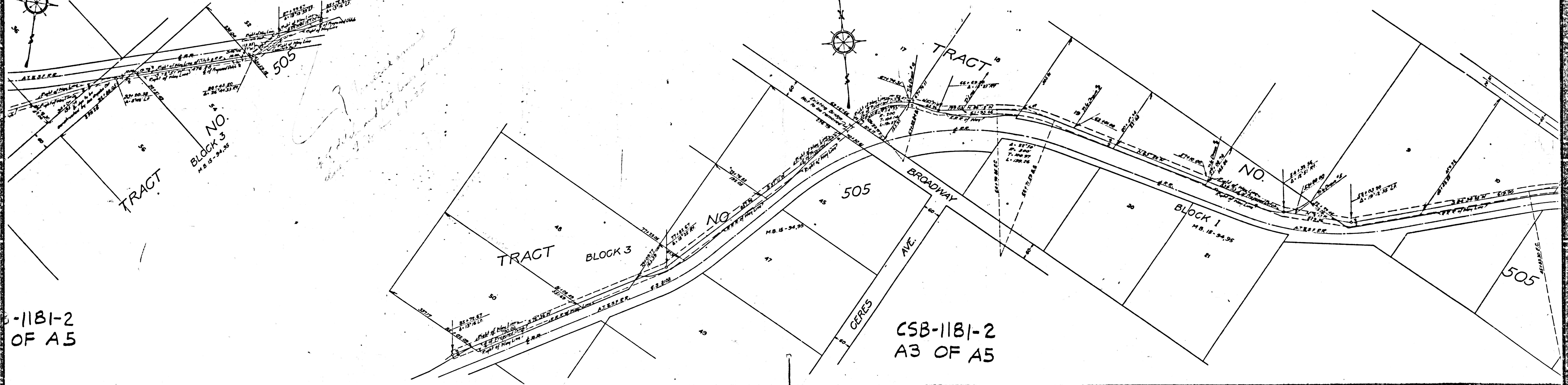
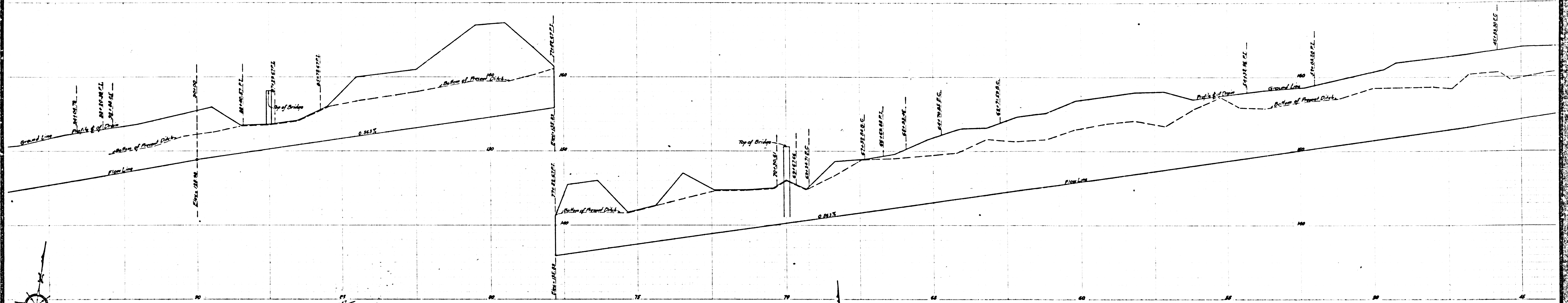
THIS SHEET IS SUPERCEDED BY SHEETS 2A & 2B.



Note: The grade lines shown are for the floor line or invert of the canal, conduit or pipe. Elevations are in feet and are assumed.

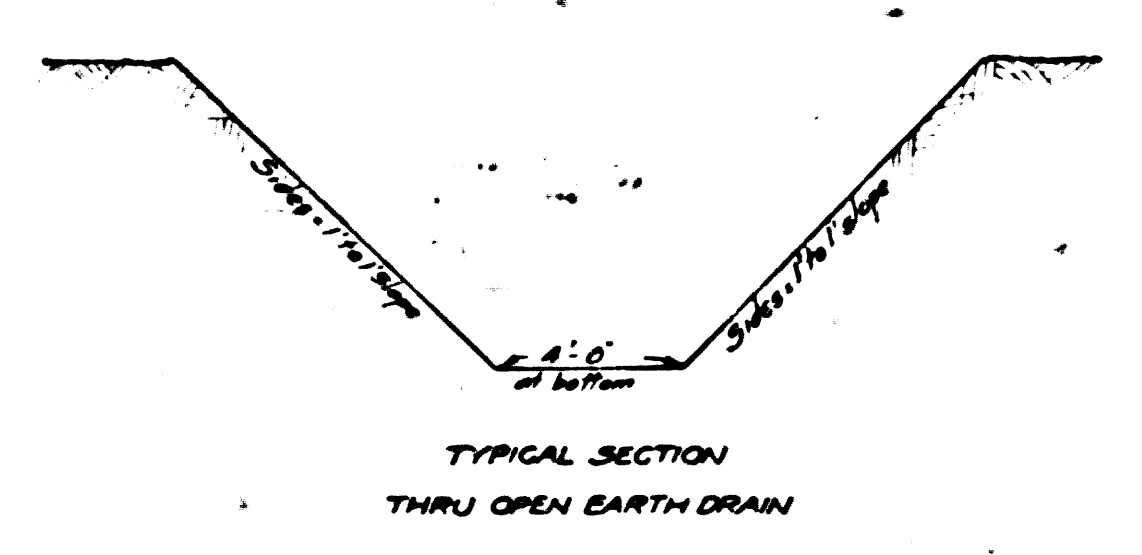
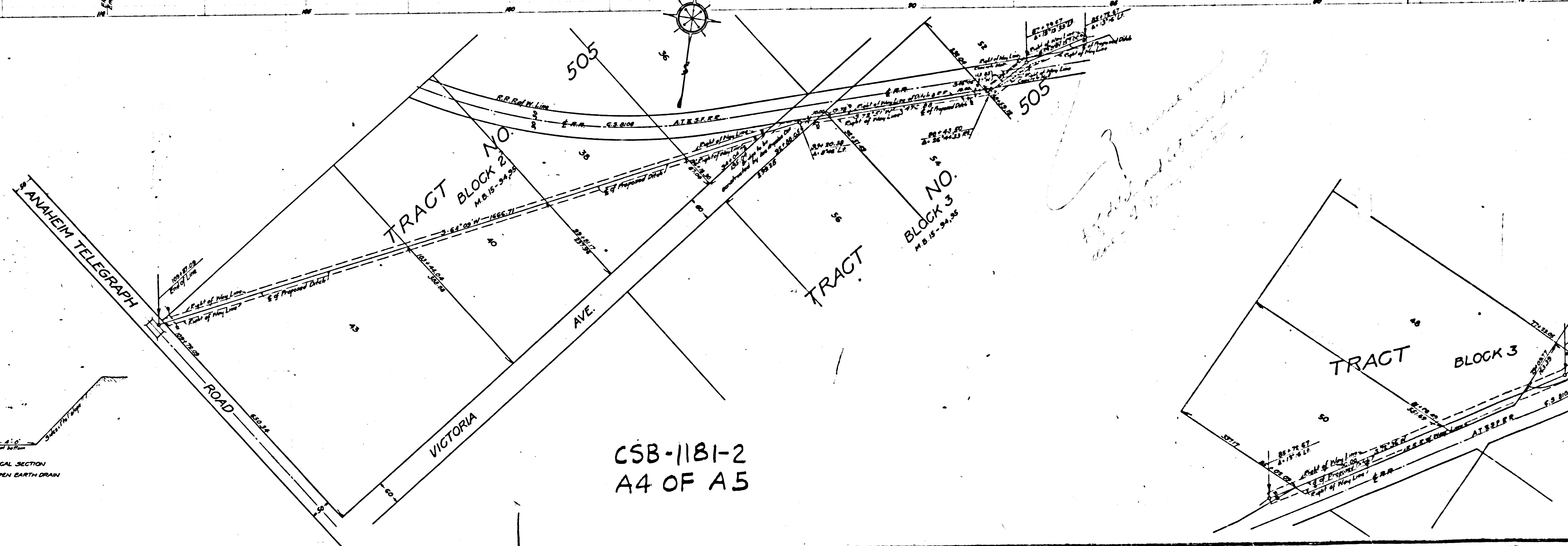
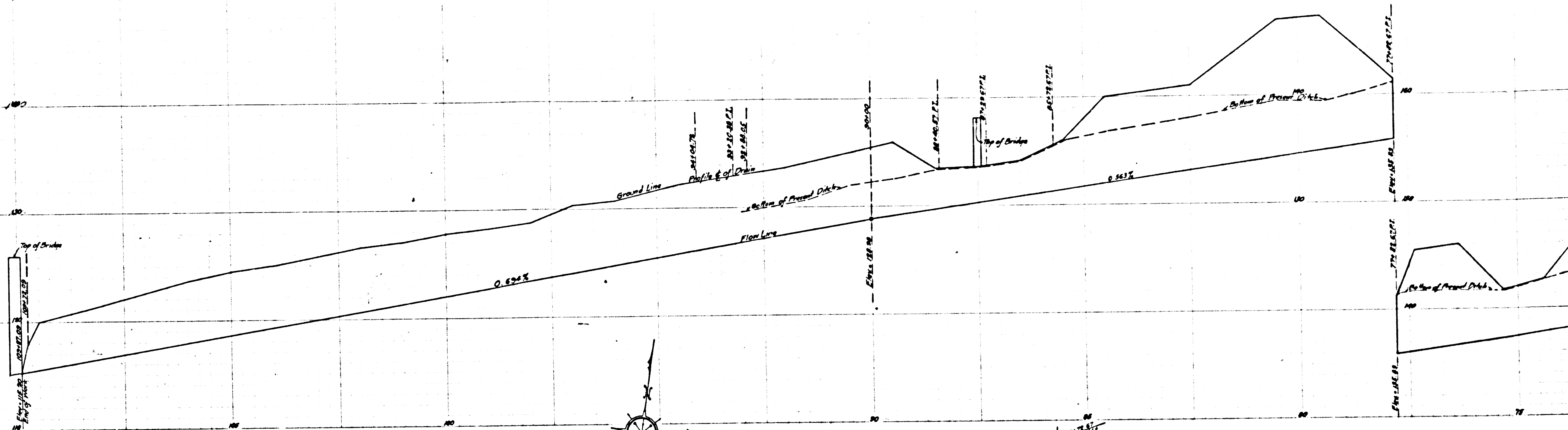
CSB-1181-2  
A2 OF A5

CSB-1181-2  
A1 OF A5



-1181-2  
OF A5

CSB-1181-2  
A3 OF A5



TYPICAL SECTION  
THRU OPEN EARTH DRAIN

CSB-1181-2  
A4 OF A5

For Note re transfer to  
Flood Control District  
see C. S. Map 116,865A.

**DRAINAGE DISTRICT  
IMPROVEMENT NO. 9.**

OF THE  
COUNTY OF LOS ANGELES

PLAN AND PROFILE OF MAIN LINE  
JULY 1924

SCALES: VERTICAL 1" = 4'-0"  
HORIZONTAL 1" = 100'

SHEET 2 OF 4 SHEETS

J. E. ROCKHOLD - COUNTY SURVEYOR

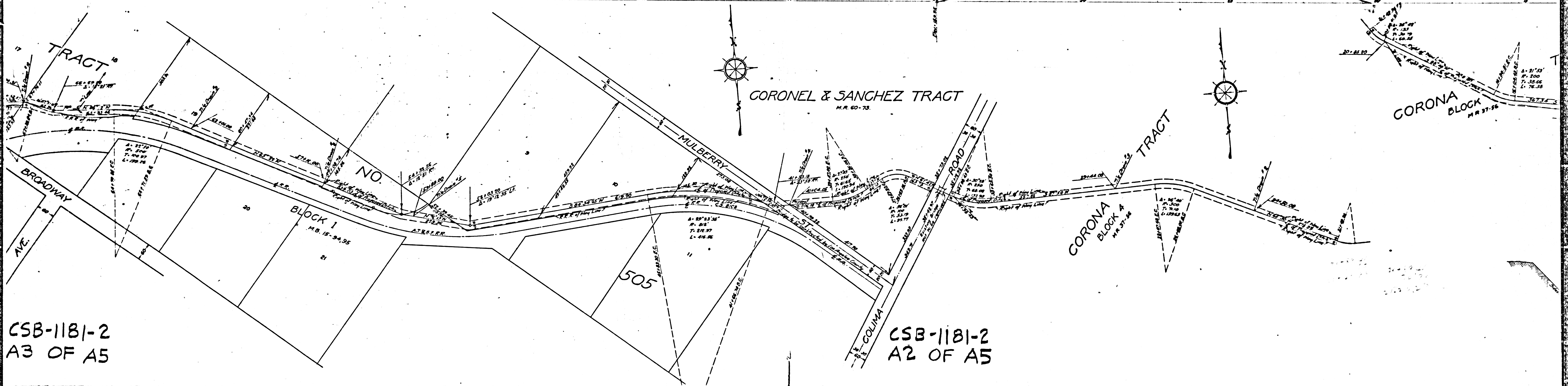
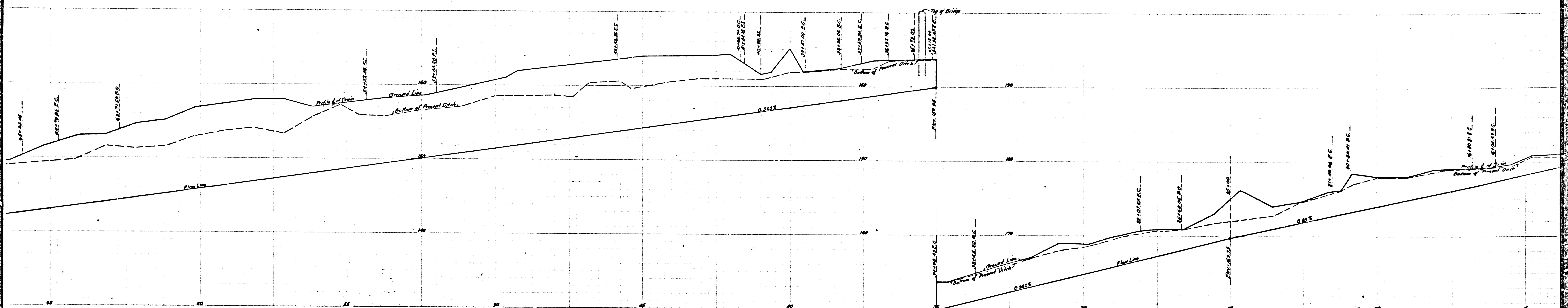
Submitted by *Edwards* Senior Engineer Approved by *J. E. Rockhold* County Surveyor

Approved as to form  
Edward T. Bishop  
County Counsel

by *J. J. Manning* Deputy

THIS SHEET IS SUPERCEDED BY SHEETS 2452B.

Note:  
The grade lines shown are for the flow line  
or invert of the canal, conduit or pipe.  
Elevations are in feet and are assumed.



CSB-1181-2  
A3 OF A5

CSB-1181-2  
A2 OF A5