

For Note re transfer to
Flood Control District
see C. S. Map No. 8654.

DRAINAGE DISTRICT IMPROVEMENT NO. 9.

OF THE
COUNTY OF LOS ANGELES

PLAN AND PROFILE OF LATERALS.

SCALES (VERTICAL 1" = 4'-0"
HORIZONTAL 1" = 100' SEPT. 1924

SHEET 3 OF 4 SHEETS

J. E. ROCKHOLD - COUNTY SURVEYOR

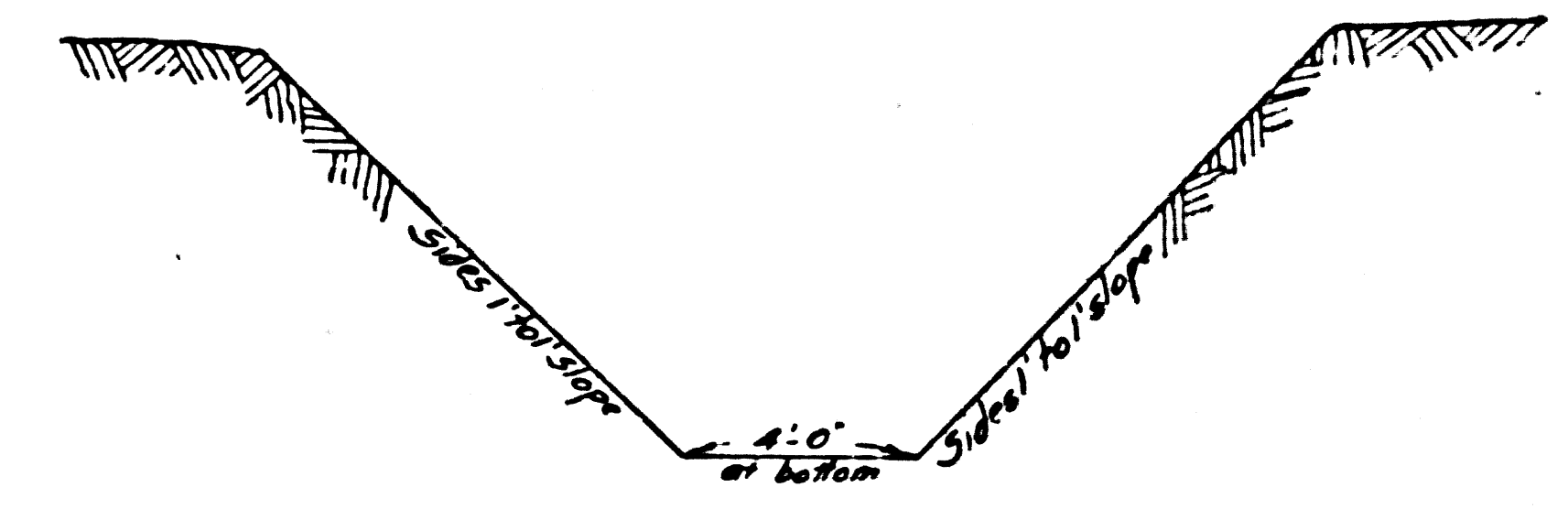
Submitted
Alvarez
Senior Engineer

Approved
J. E. Rockhold
County Surveyor

Approved as to form
Edward T. Bishop
County Counsel
by *J. J. Moran*
Deputy

Note:
The grade lines shown are for the flow line
or invert of the canal, conduit or pipe.
Elevations are in feet and are assumed.
To convert to U.S.G.S. Datum add
3.02 ft. to elevations shown herein.
References: F.B. 99 & L.D. 142 & L.D. 144

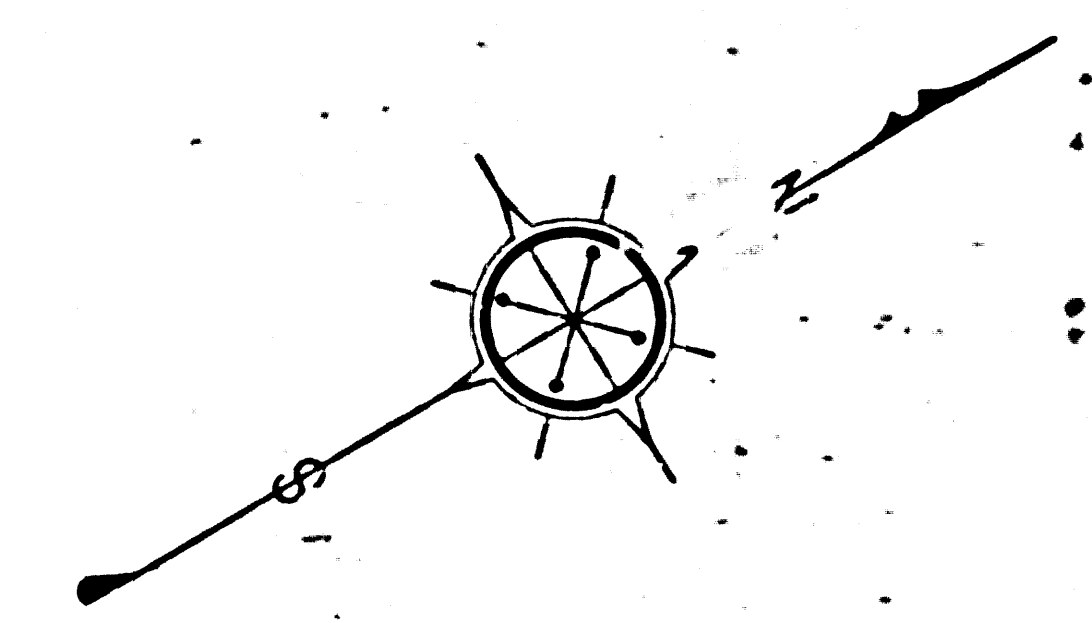
CSB-1181-3
A1 OF A5



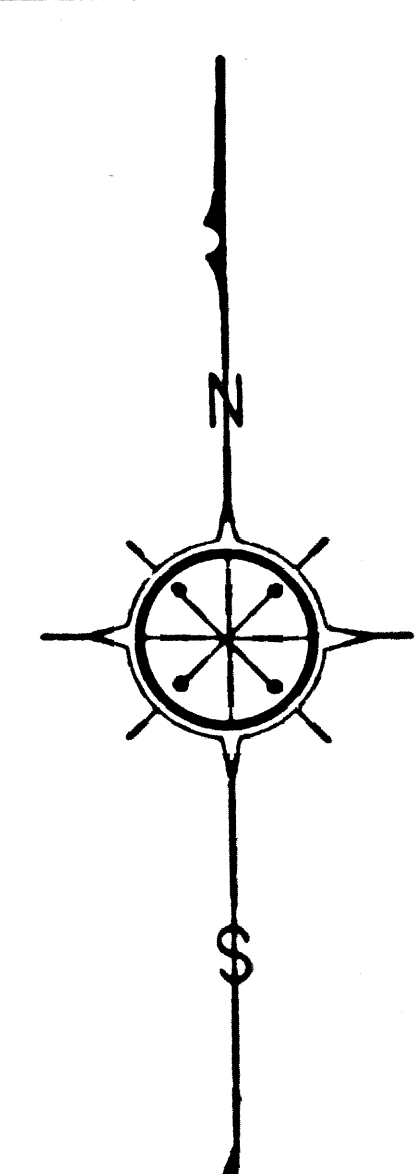
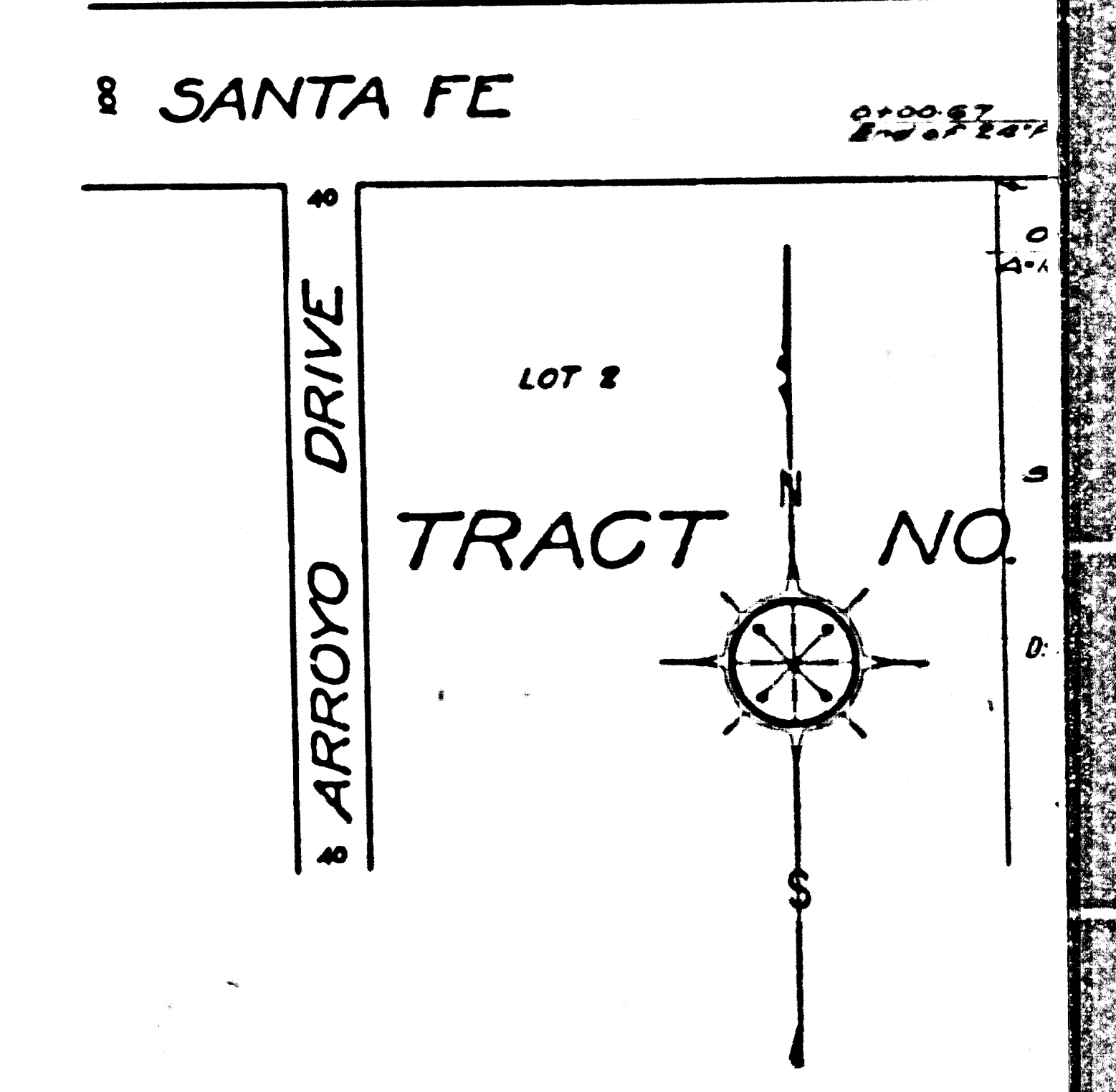
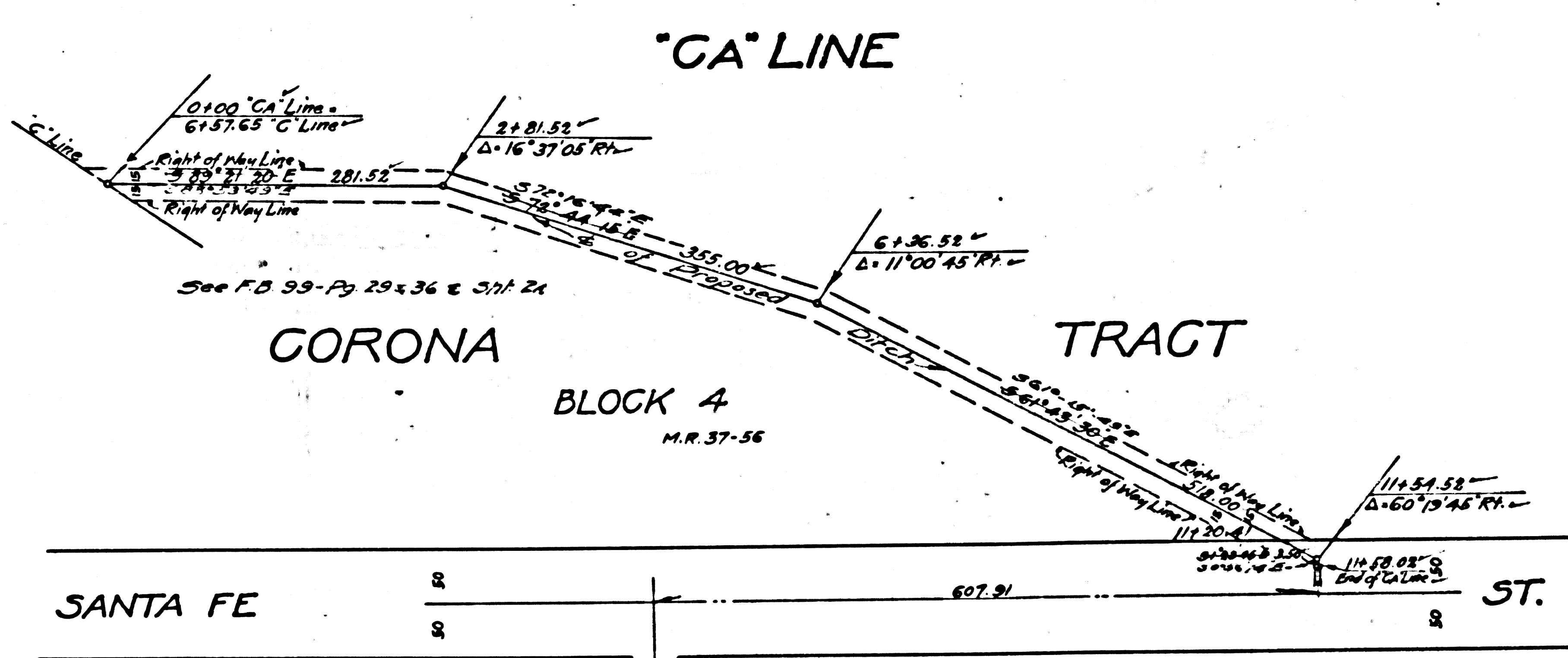
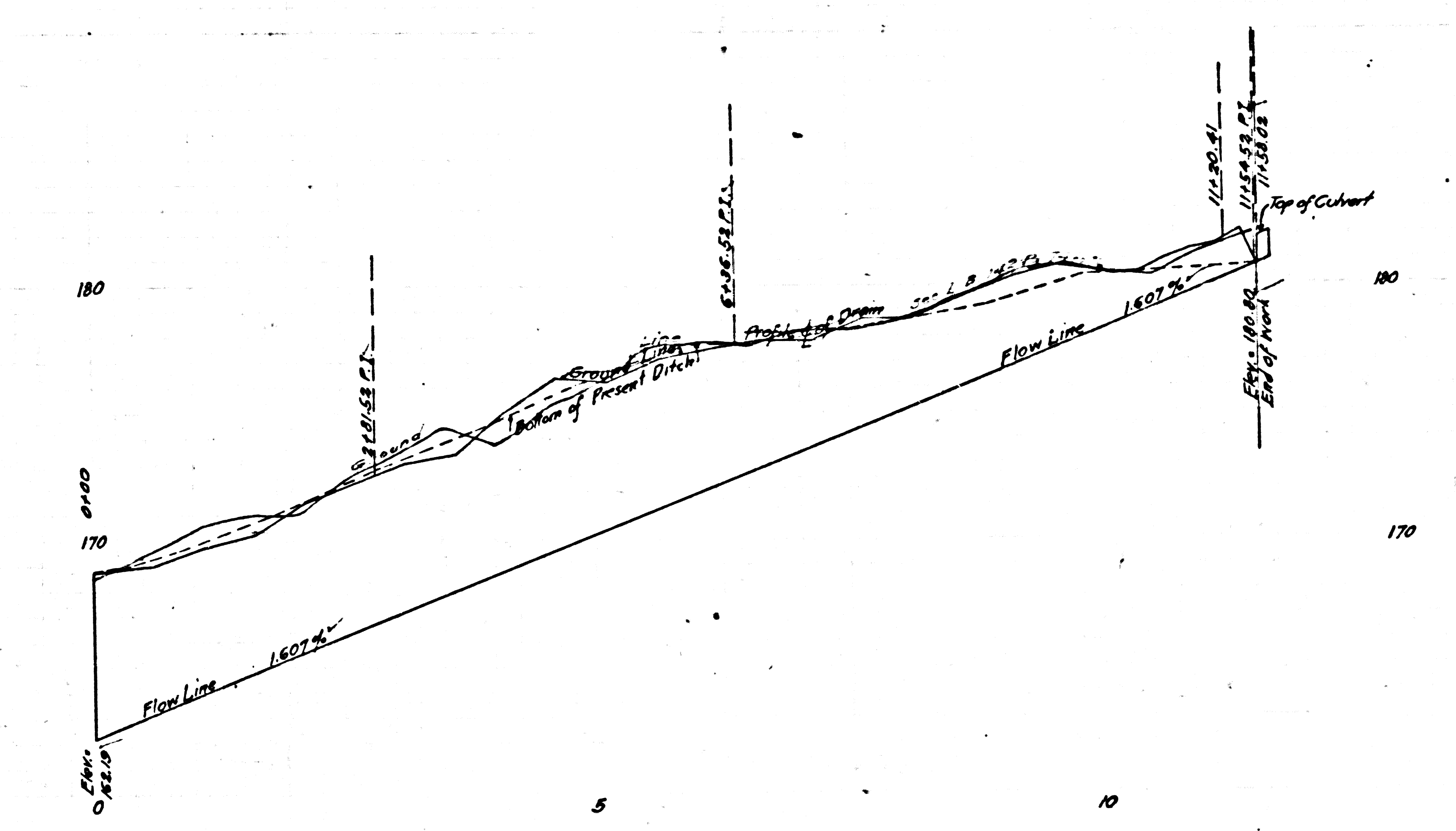
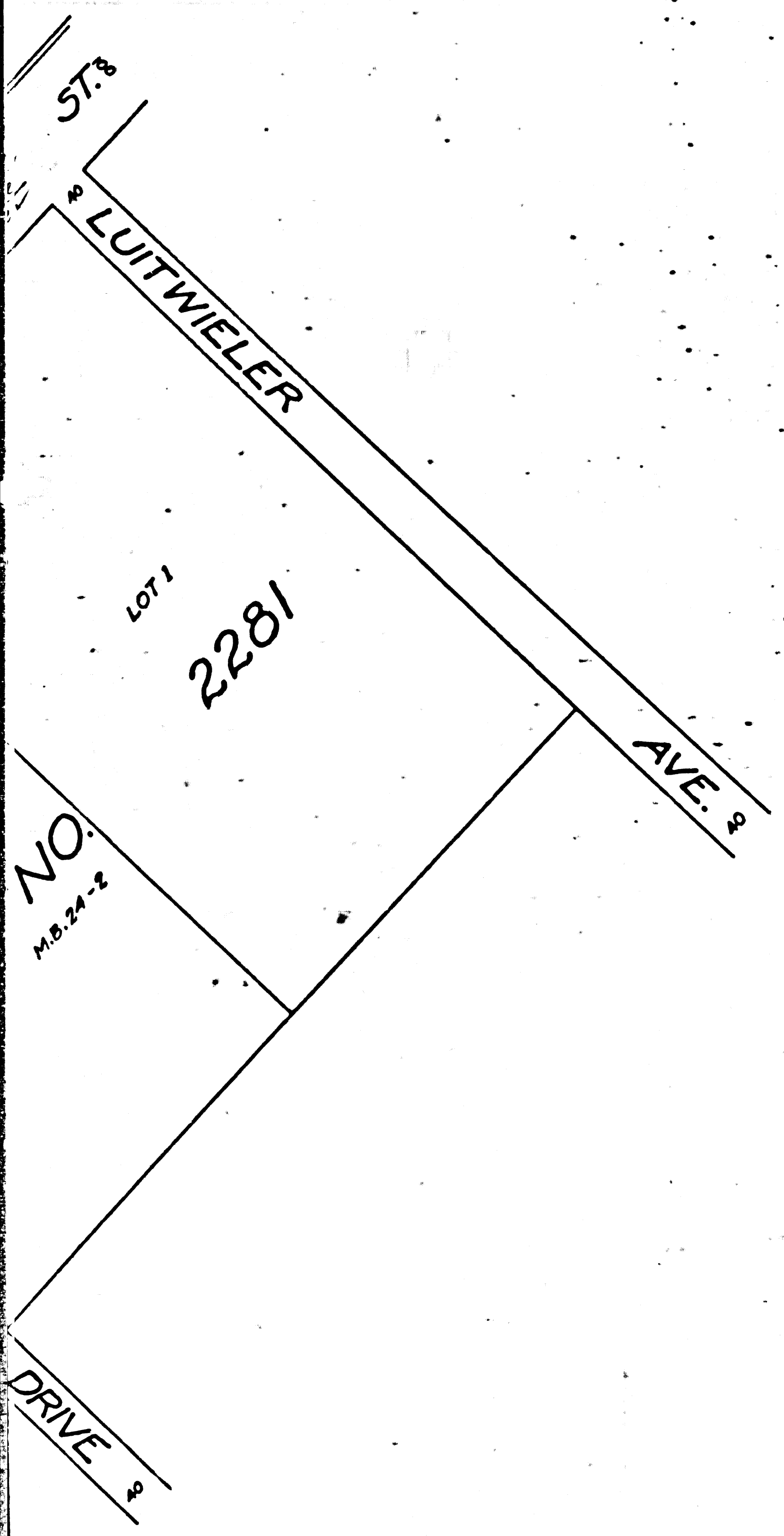
TYPICAL SECTION
THRU OPEN EARTH DRAIN

D.D. No. 9		
Drawn by	<i>K.H.K.</i>	<i>S.J.</i>
Traced by	<i>Mack</i>	<i>Sept.</i>
Checked by	<i>(Signature)</i>	<i>Sept.</i>

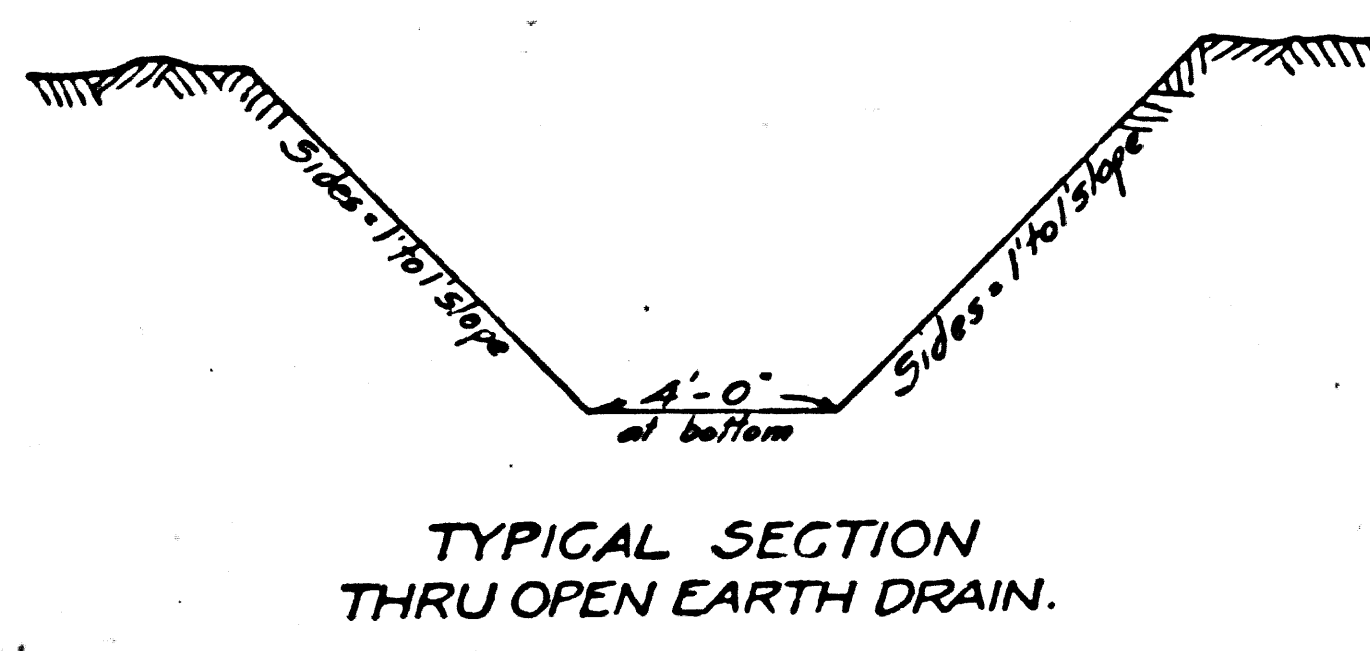
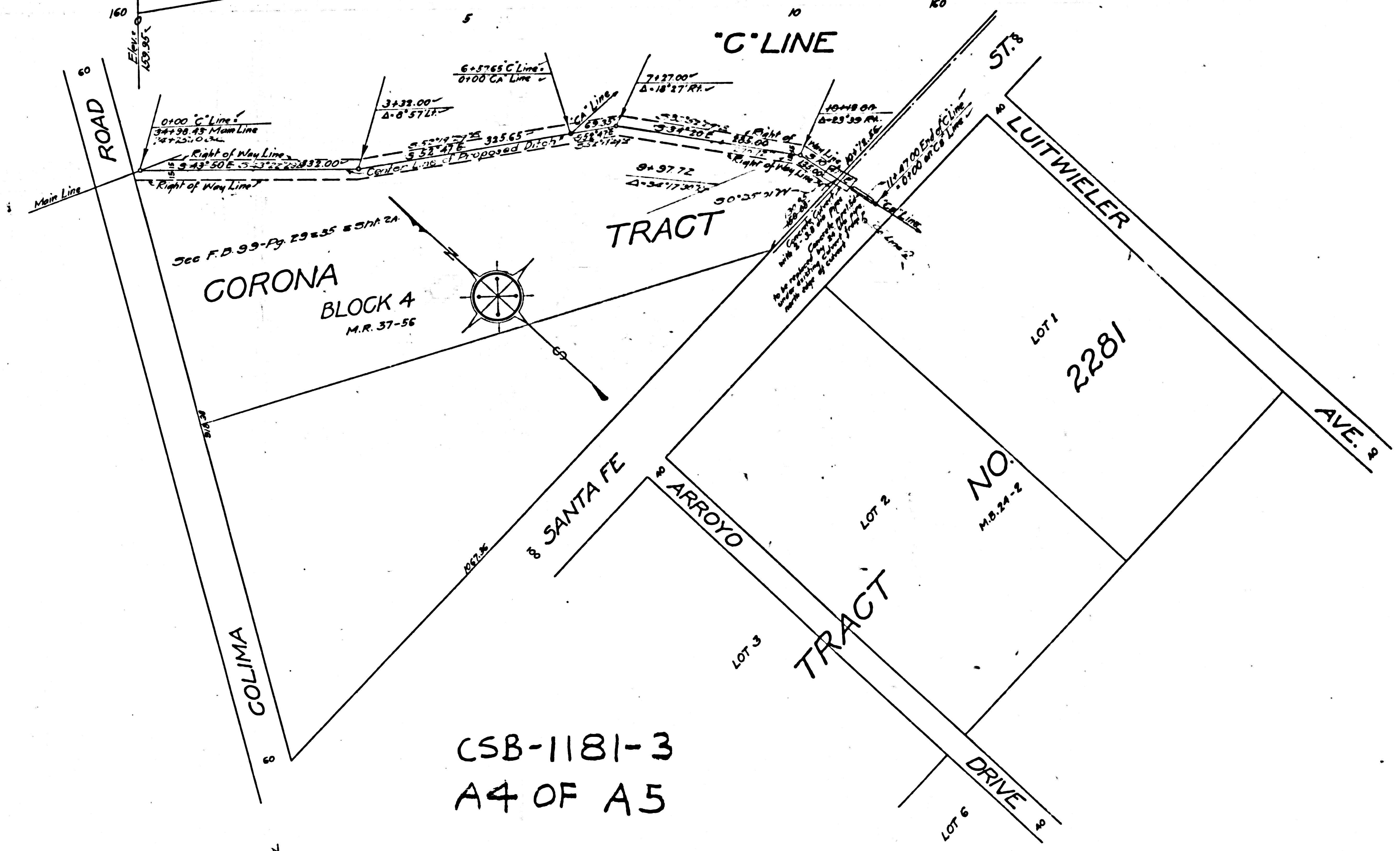
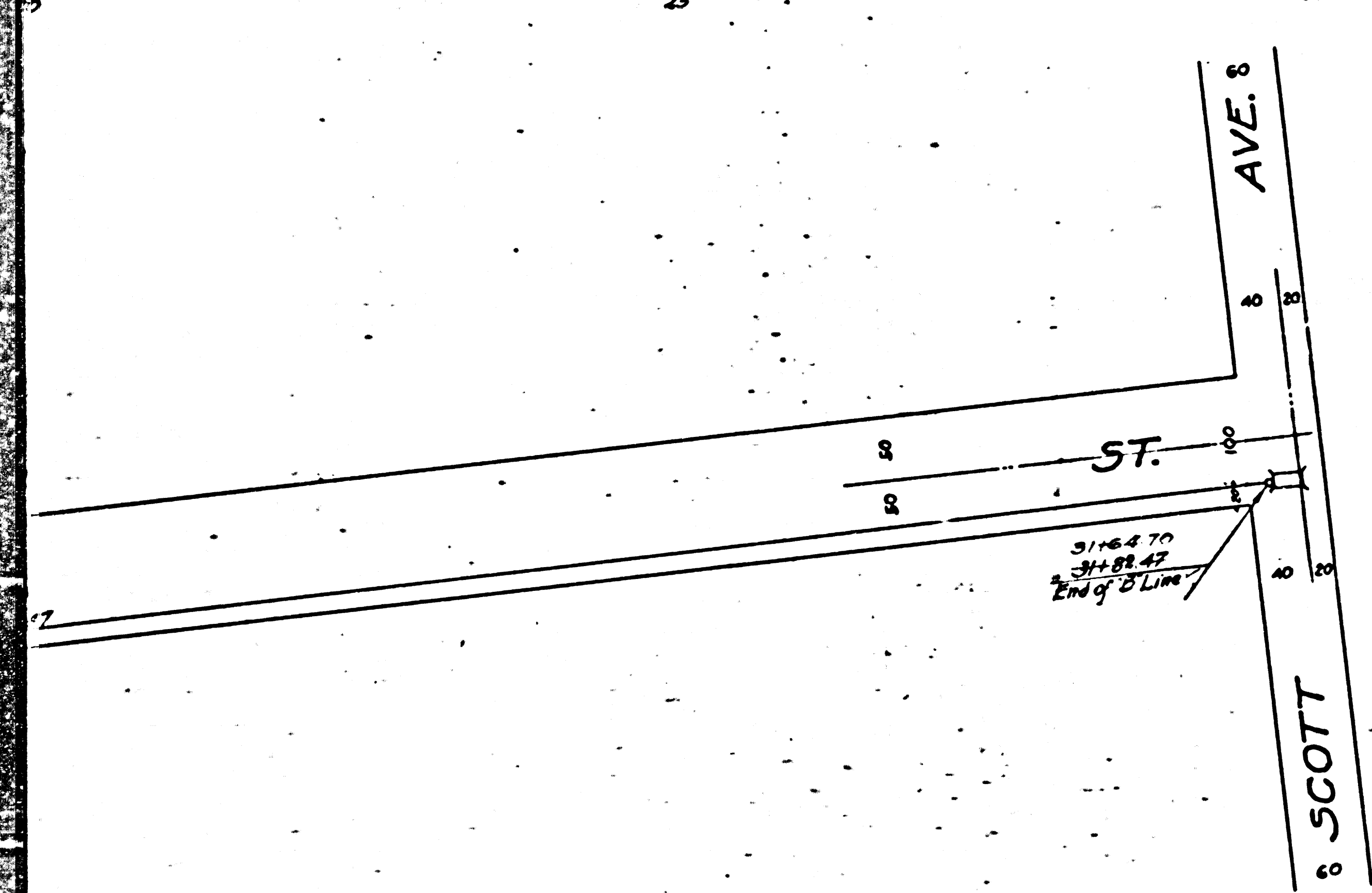
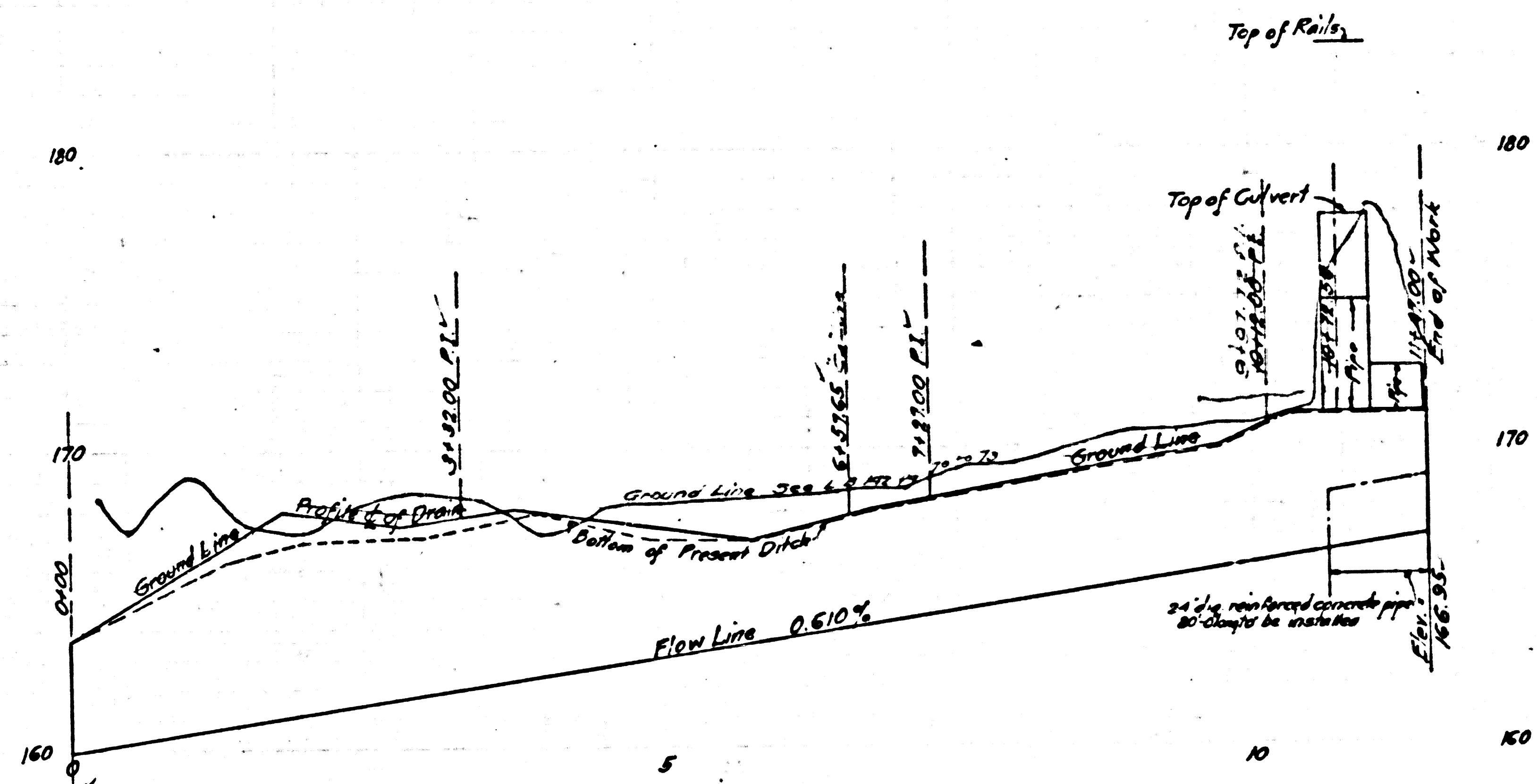
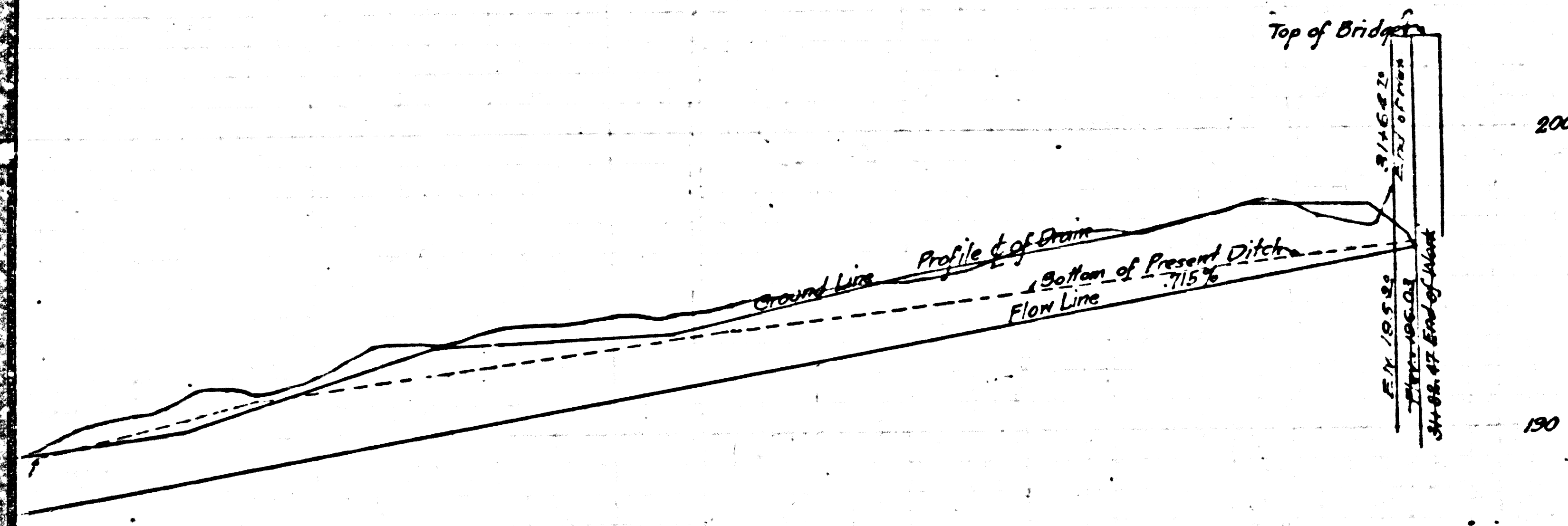
Revised by *Parkin & Morley* July 1922



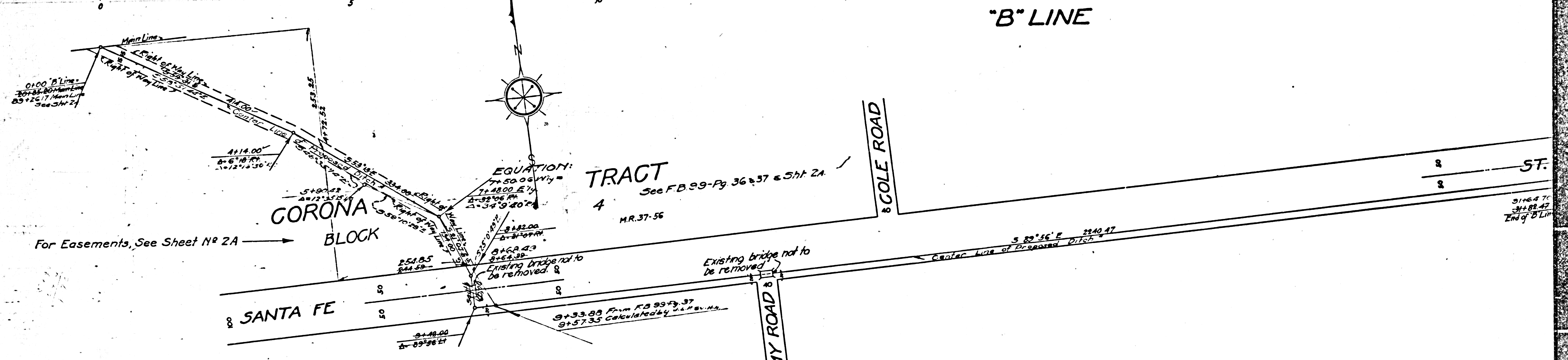
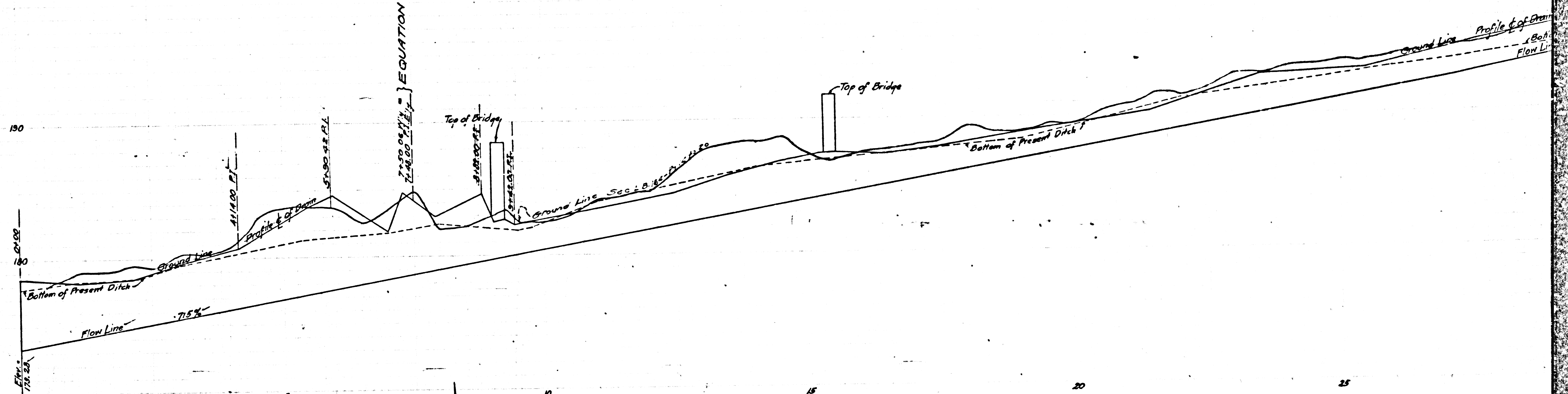
MULBERRY ROAD



CSB-1181-3
 A3 OF A5



CSB-1181-3
 A4 OF A5



**DRAINAGE DISTRICT
IMPROVEMENT NO. 9.**

OF THE
COUNTY OF LOS ANGELES

PLAN AND PROFILE OF LATERALS.

SCALES (VERTICAL 1"=4'-0"
HORIZONTAL 1"=100') JULY 1924

SHEET 3 OF 4 SHEETS
J.E. ROCKHOLD - COUNTY SURVEYOR

Submitted *Adwards* Senior Engineer Approved *J.E. Rockhold* County Surveyor

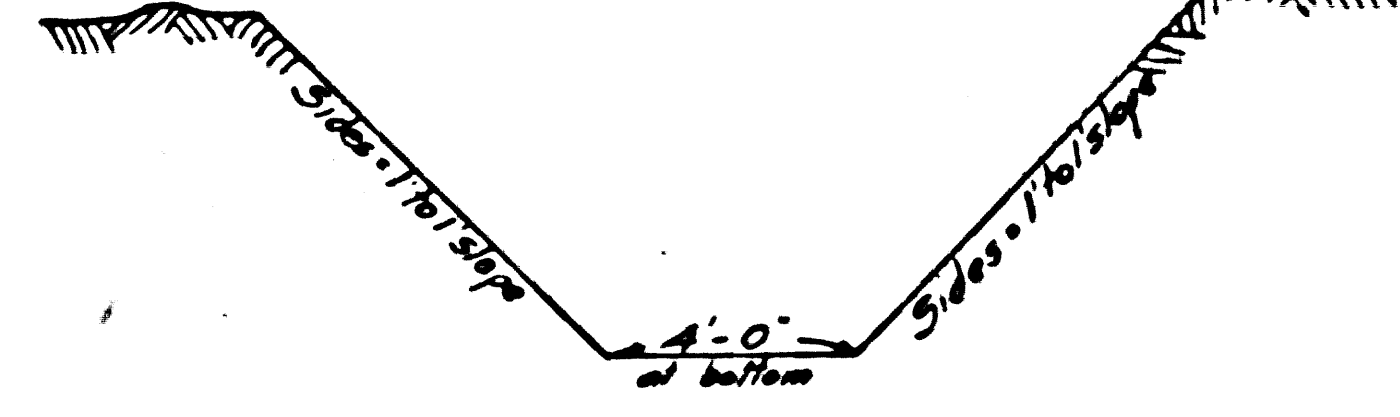
Approved as to form
Edward T. Bishop
County Counsel

by *J.J. Maroney* Deputy
Revised by Partin & Hartley July 1927.

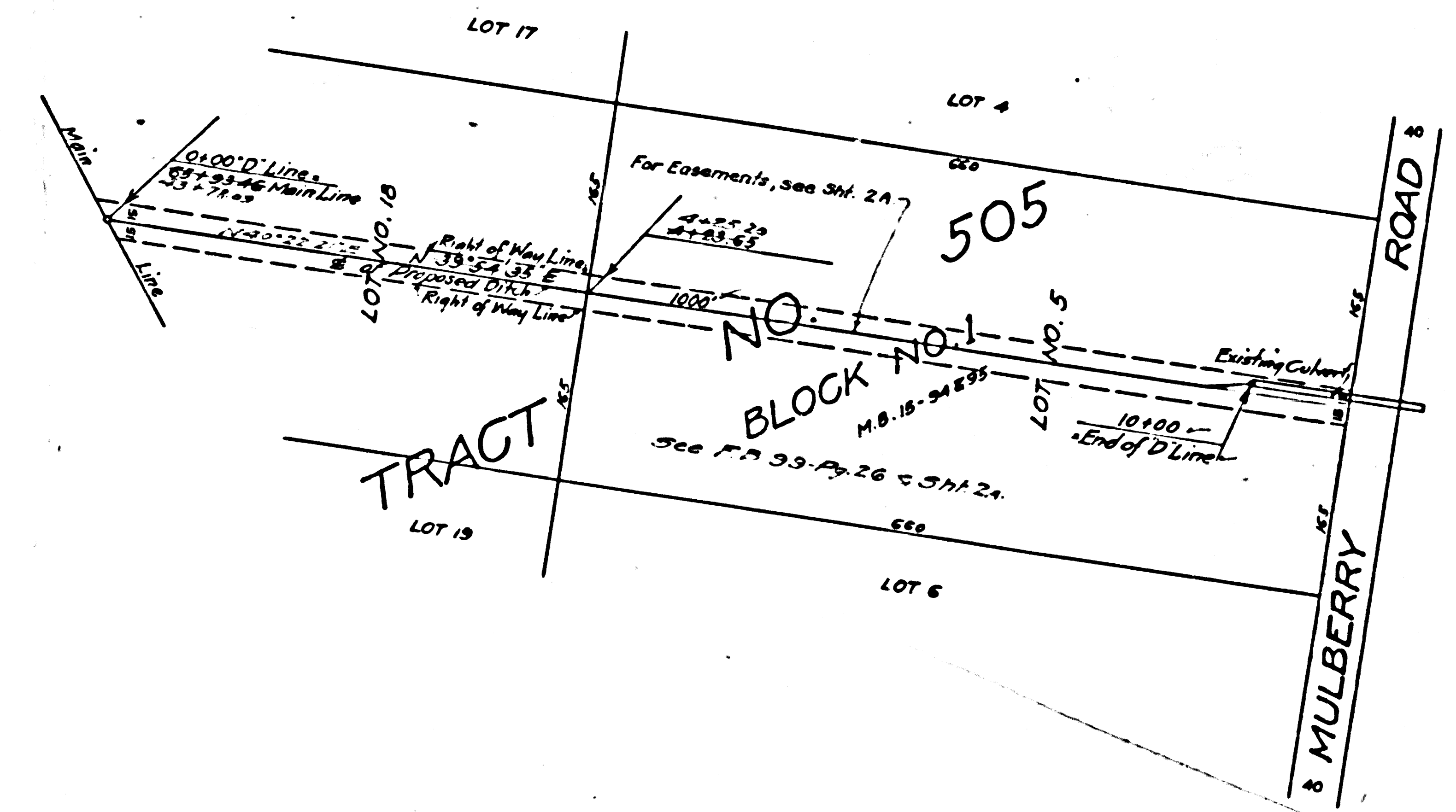
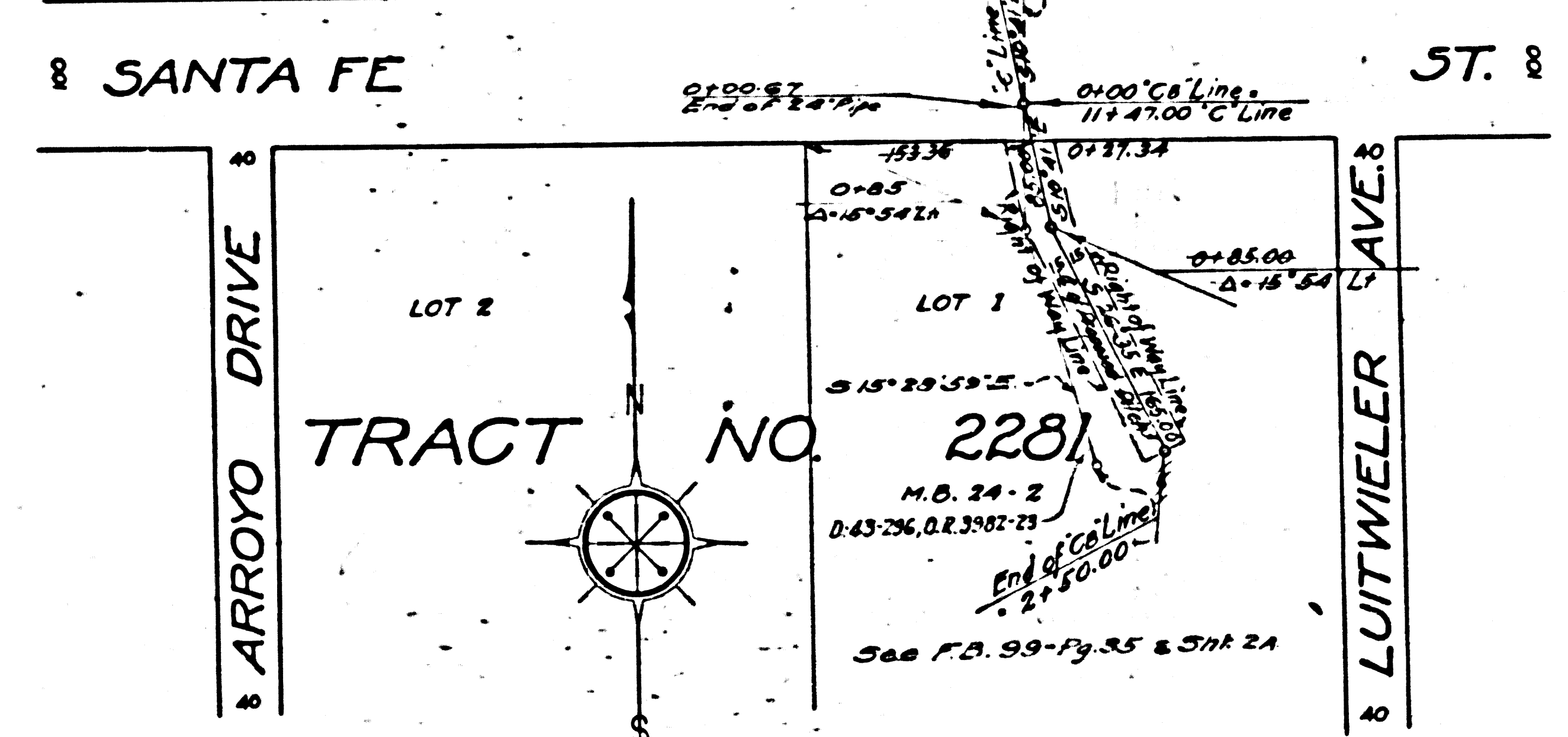
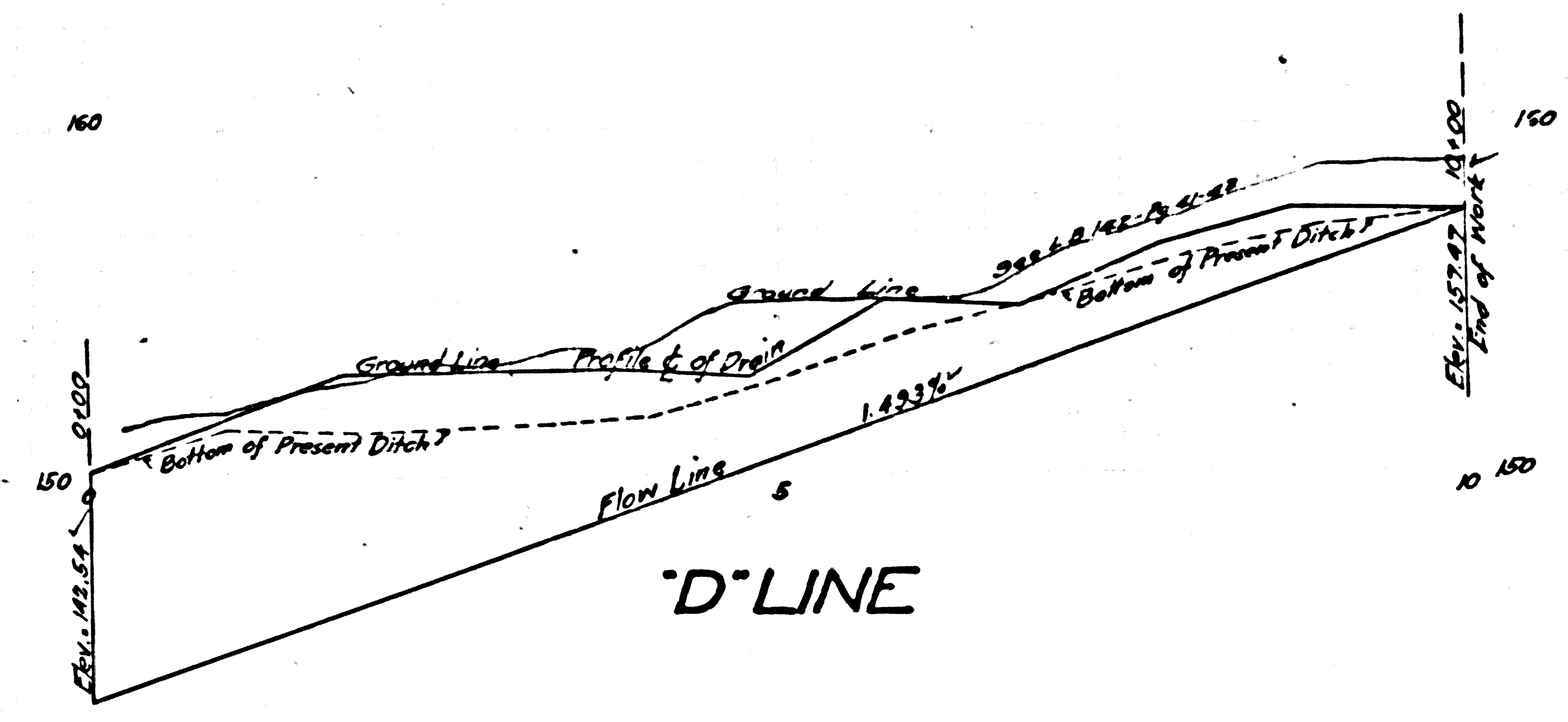
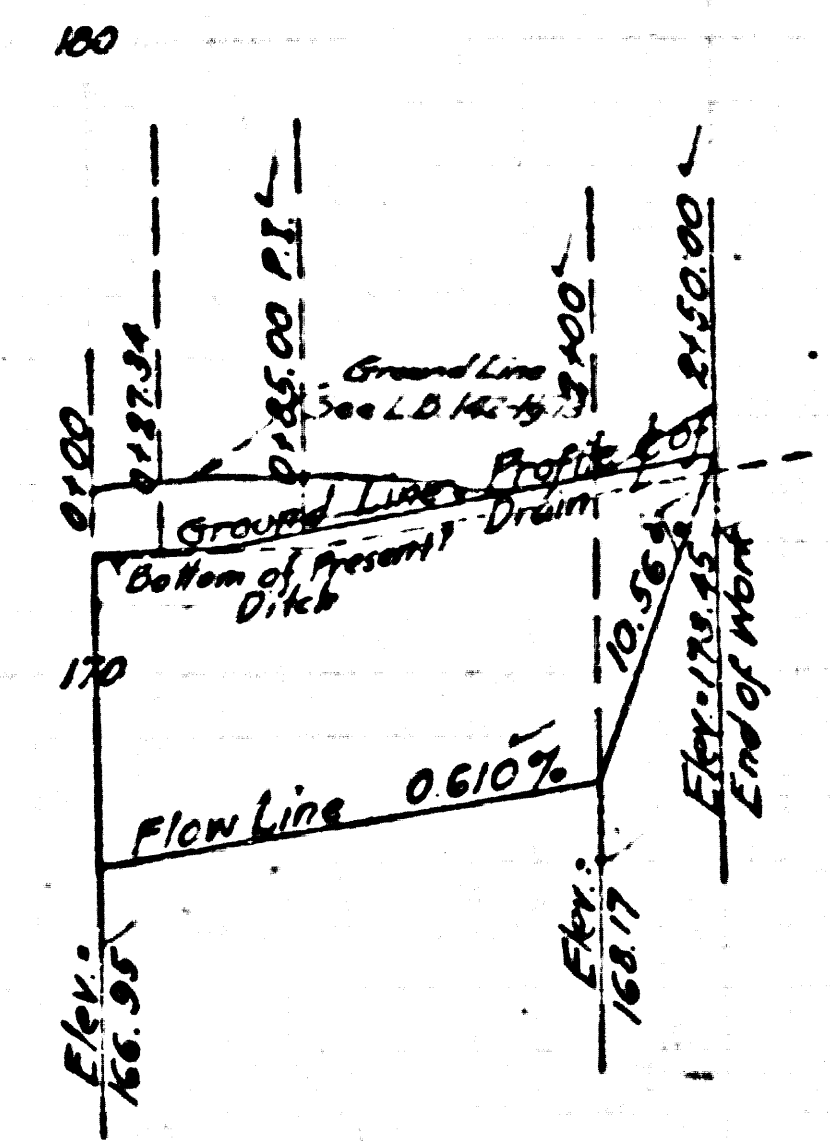
CSB-1181-3
A5 OF A5

For Note re transfer to
Flood Control District
see C. S. Map No. 8654

Note:
The grade lines shown are for the flow line
or invert of the canal, conduit or pipe.
Elevations are in feet and are assumed
to convert to U.S. G.S. Datum add
30.2 ft. to elevations shown hereon.
References: FB 99 & L.B. 142 & L.B. 164.



TYPICAL SECTION
THRU OPEN EARTH DRAIN.



CSB-1181-3
A2 OF A5