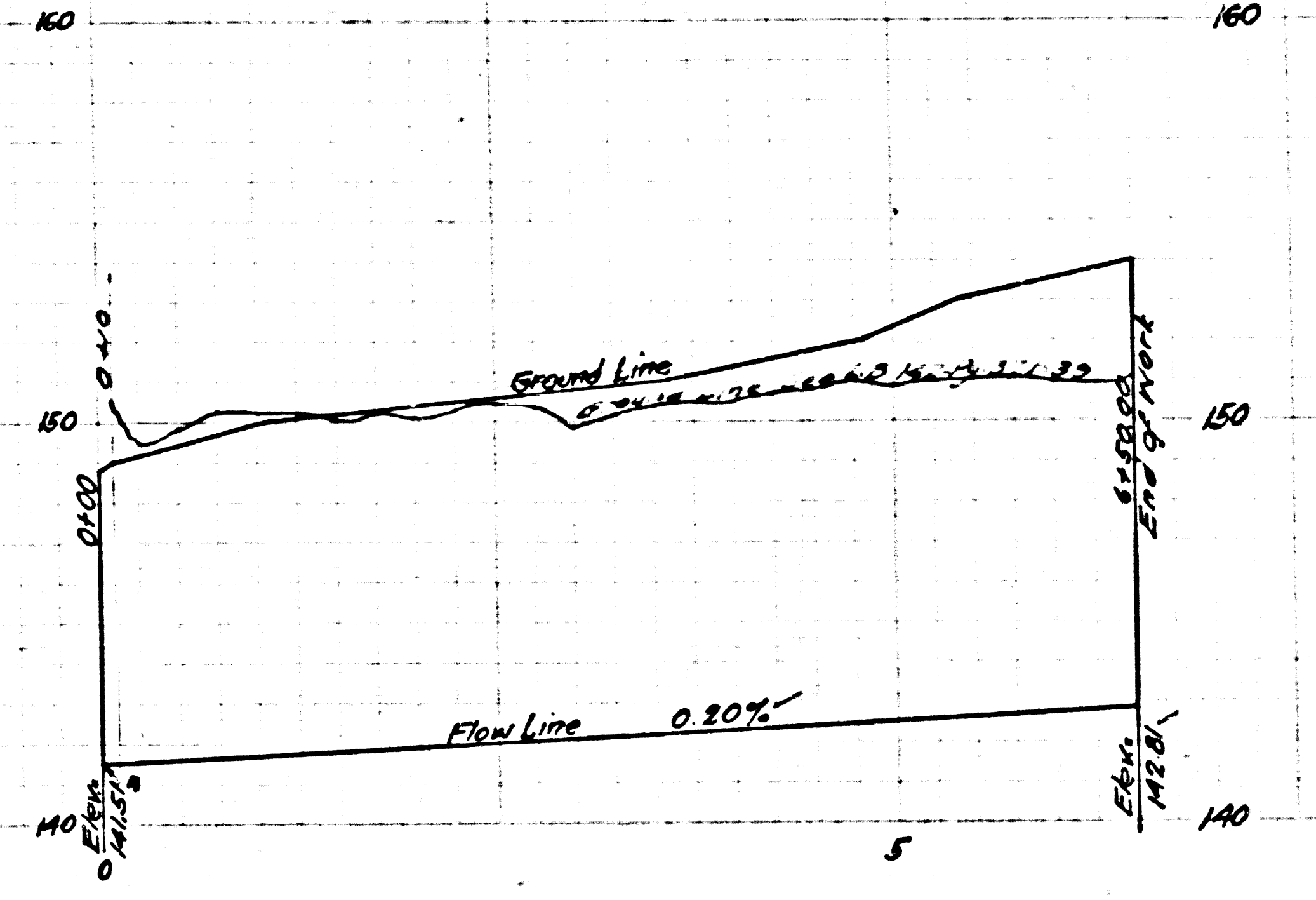
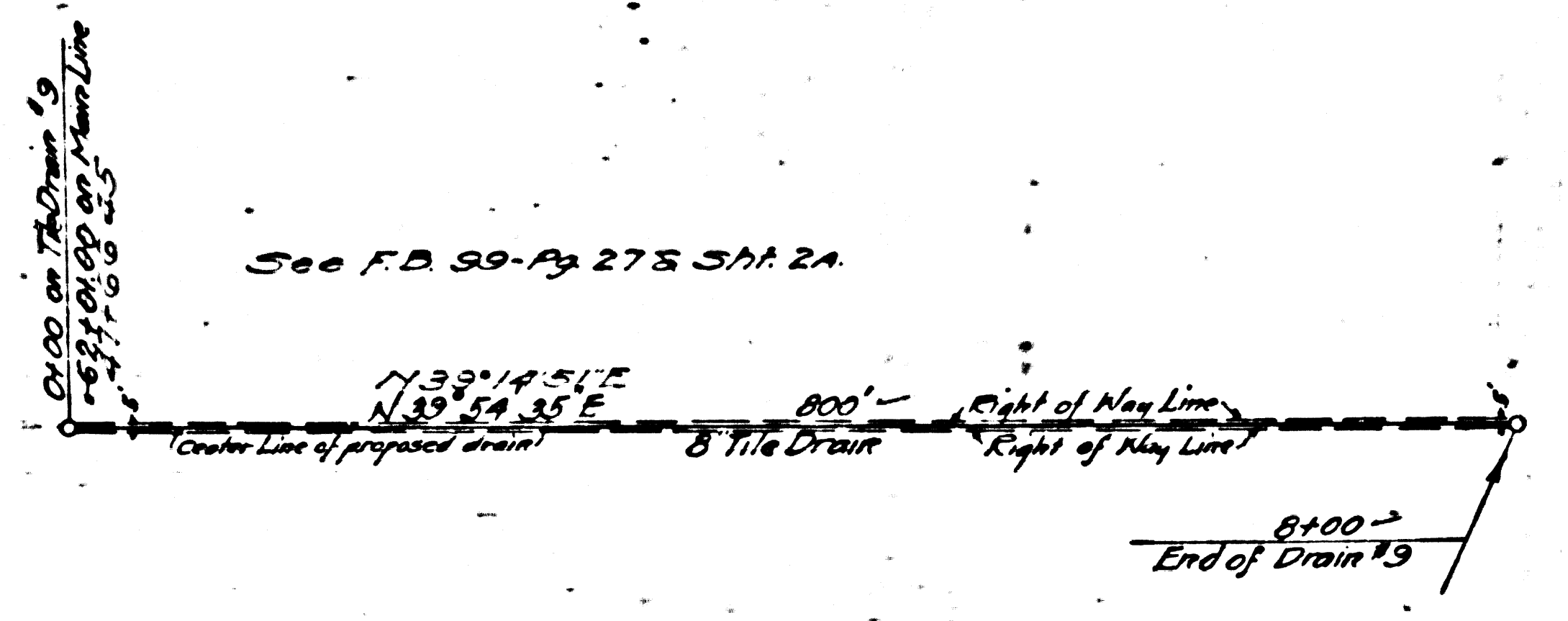


TILE DRAIN #9

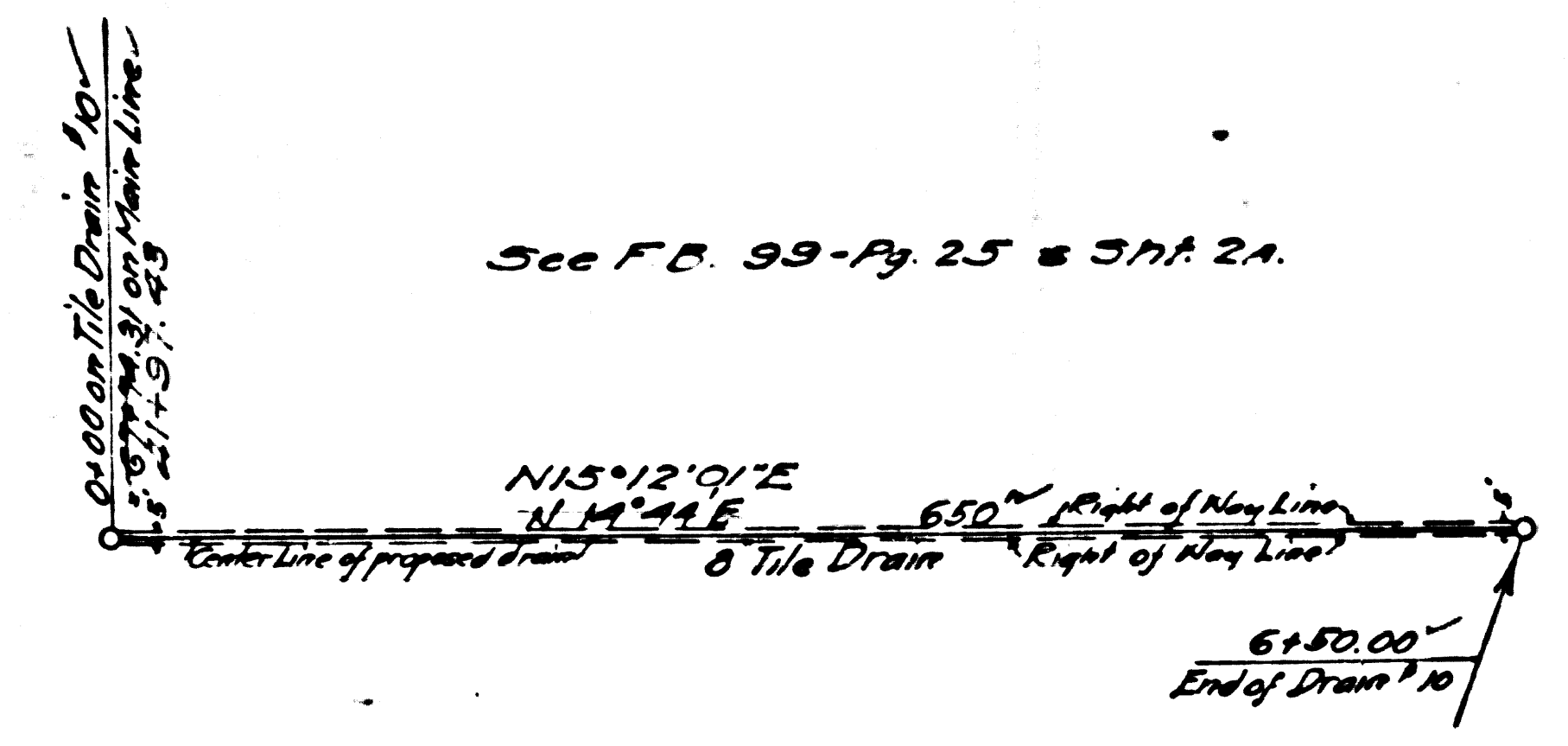


TILE DRAIN #10

← For Easements, See Sheet No. 2A



See F.B. 99-Pg. 27 & 31A 2A



See F.B. 99-Pg. 25 & 31A 2A

For Note re transfer to
Flood Control District
see C. S. Map No. 5654.

DRAINAGE DISTRICT IMPROVEMENT NO. 9.

OF THE
COUNTY OF LOS ANGELES

PLAN AND PROFILE OF TILE DRAINS.
SCALES: VERTICAL 1" = 4'-0"
HORIZONTAL 1" = 100'

SEPTEMBER 1924

SHEET 4 OF 4 SHEETS

J.E. ROCKHOLD - COUNTY SURVEYOR.

Submitted
A. W. ...
Senior Engineer

Approved
J.E. Rockhold
County Surveyor

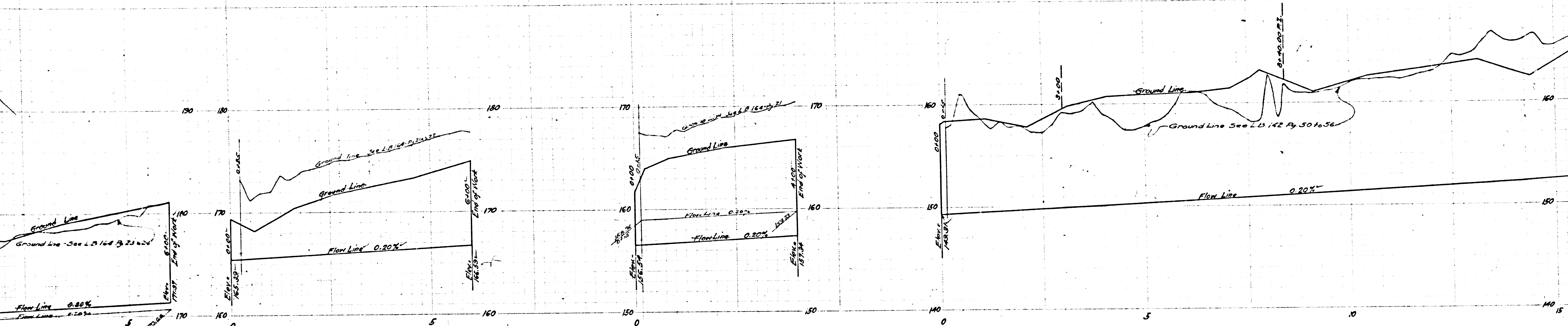
Approved as to form
Edward T. Bishop
County Counsel
by J. J. ...
Deputy

Note:
The grade lines shown are for the flow line
or invert of the canal, conduit or pipe.
Elevations are in feet and are assumed.
To convert to U.S.G.S. Datum
add 9.02 Ft. to elevations
shown hereon.

References: { L.B. 142
L.B. 164
F.B. 99

CSB-1181-4
A1 OF A4

D.D.I. No. 9	
Drawn by	Mueck
Traced by	Mueck
Checked by	Cospho
Revised by Fortin & ... 1927	

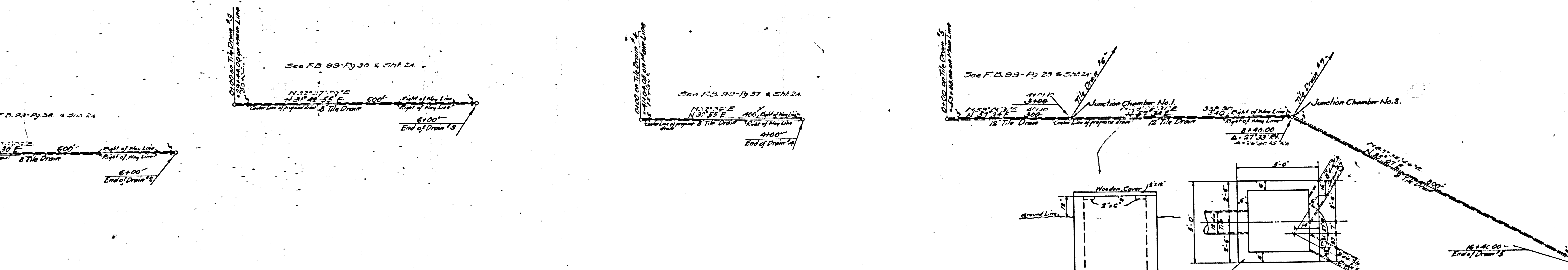


TILE DRAIN #2

TILE DRAIN #3

TILE DRAIN #4

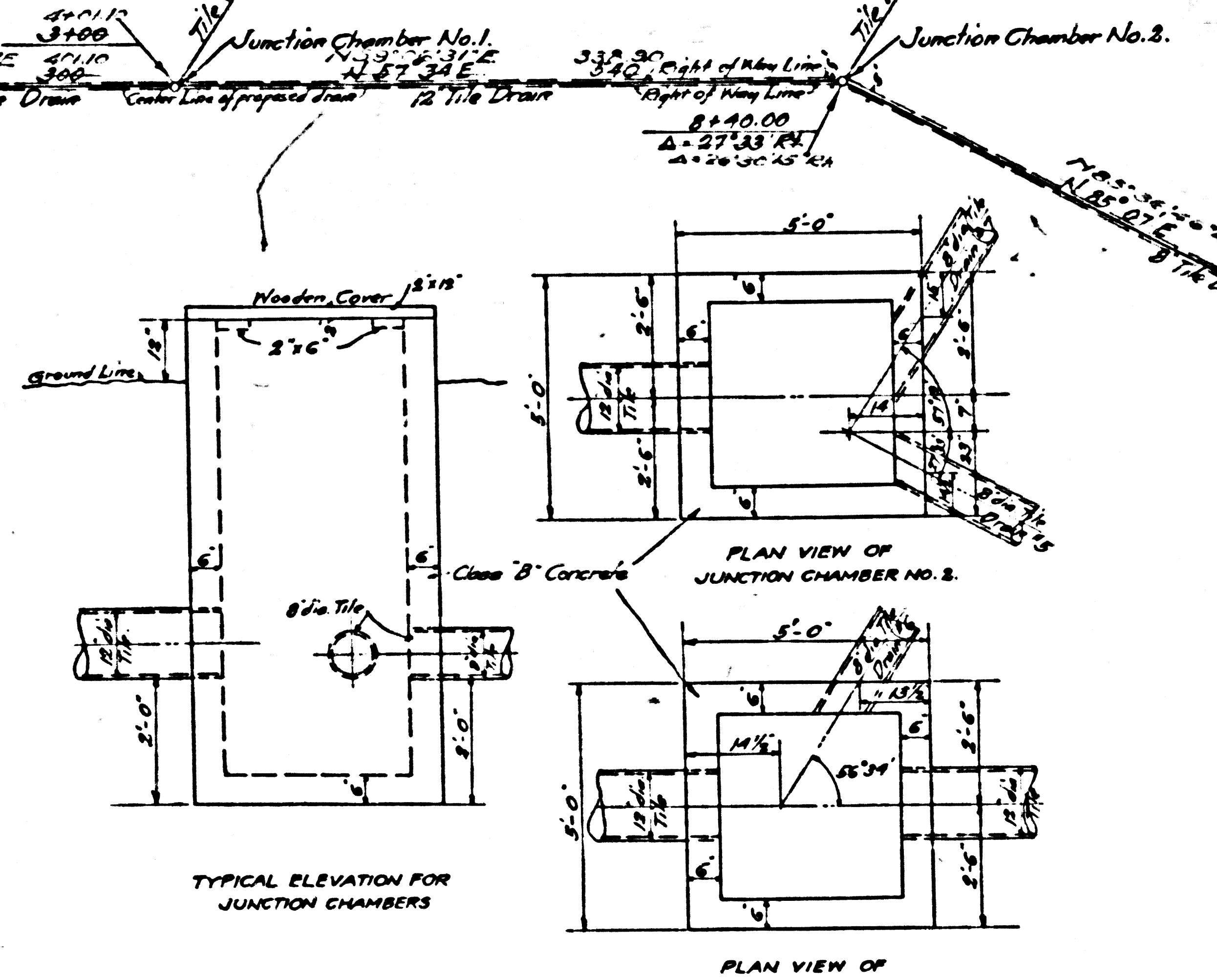
TILE DRAIN #5



See F.D. 99-Pg 30 & SHA 21.

See F.D. 99-Pg 37 & SHA 21.

See F.D. 99-Pg 29 & SHA 21.

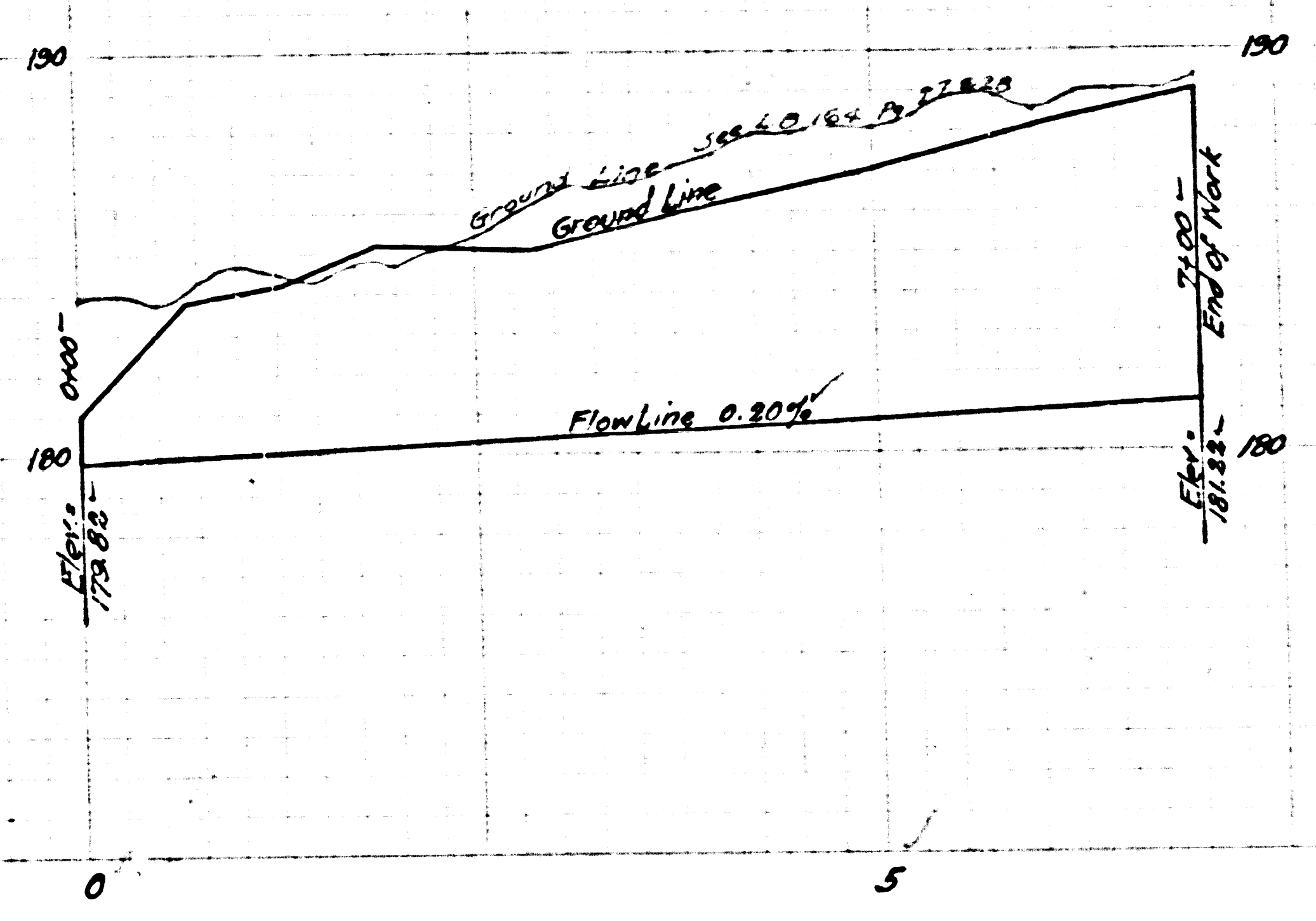


TYPICAL ELEVATION FOR JUNCTION CHAMBERS

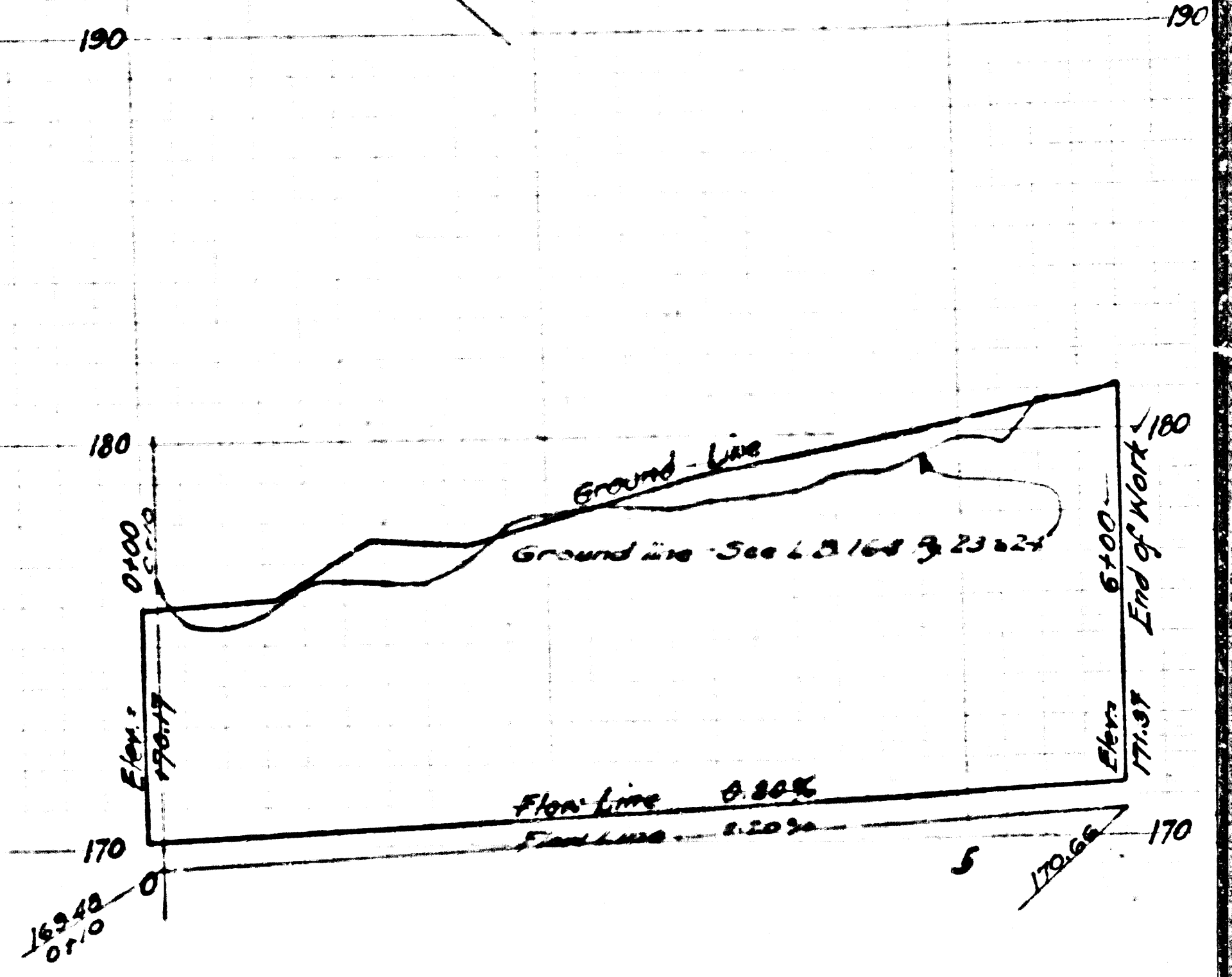
PLAN VIEW OF JUNCTION CHAMBER NO. 2.

PLAN VIEW OF JUNCTION CHAMBER NO. 1.

CSB-1181-4
A3 OF A4



TILE DRAIN #1



TILE DRAIN #2

For Easements, See Sheet No 2A →

For Note re transfer to
 Flood Control District
 see C. S. Map No. 8654

**DRAINAGE DISTRICT
 IMPROVEMENT NO. 9.**
 OF THE
 COUNTY OF LOS ANGELES

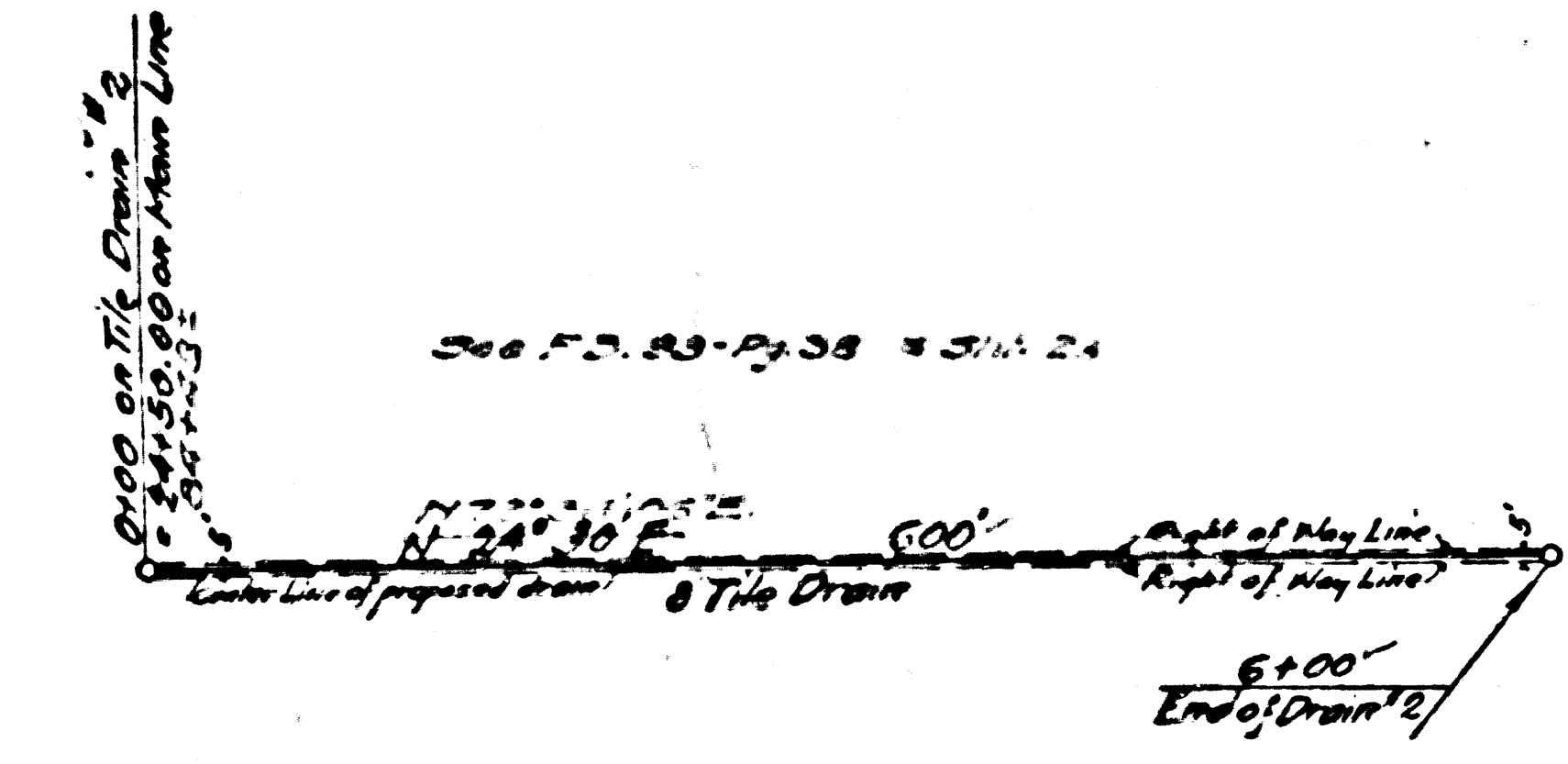
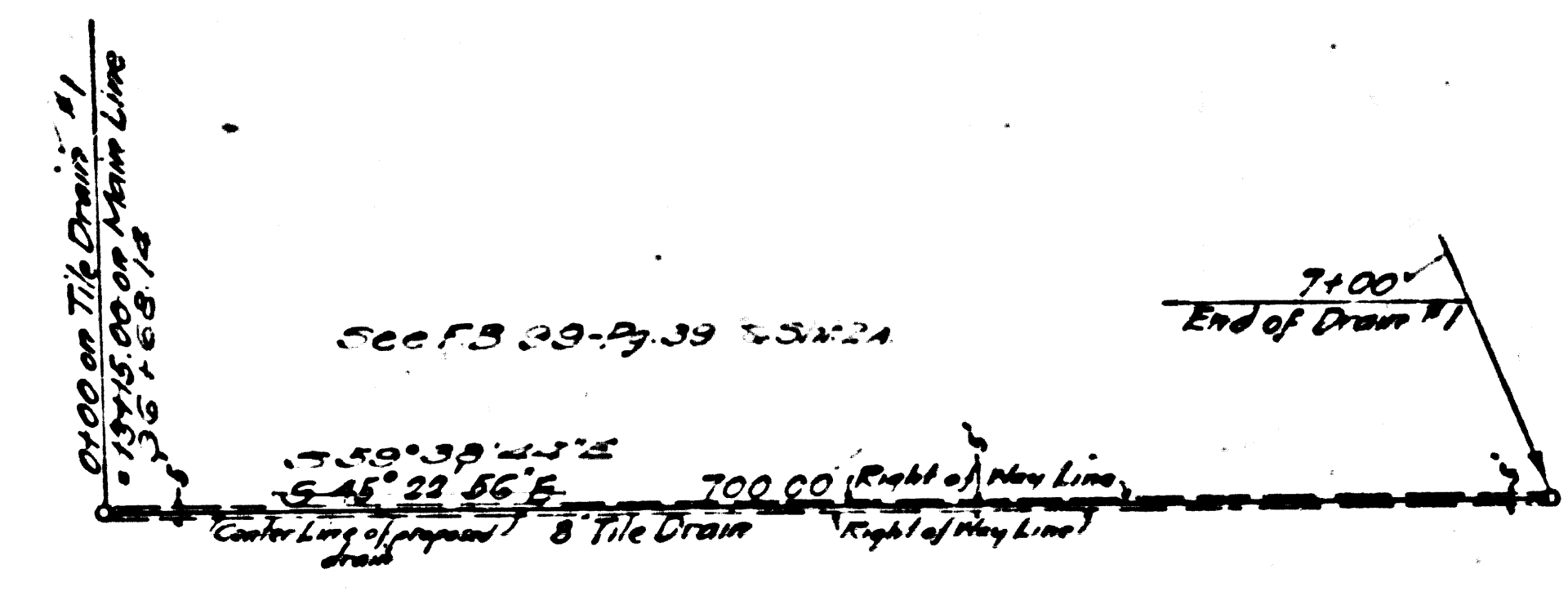
PLAN AND PROFILE OF TILE DRAINS.
 SCALES: VERTICAL 1" = 4'-0"
 HORIZONTAL 1" = 100' SEPT. 1924

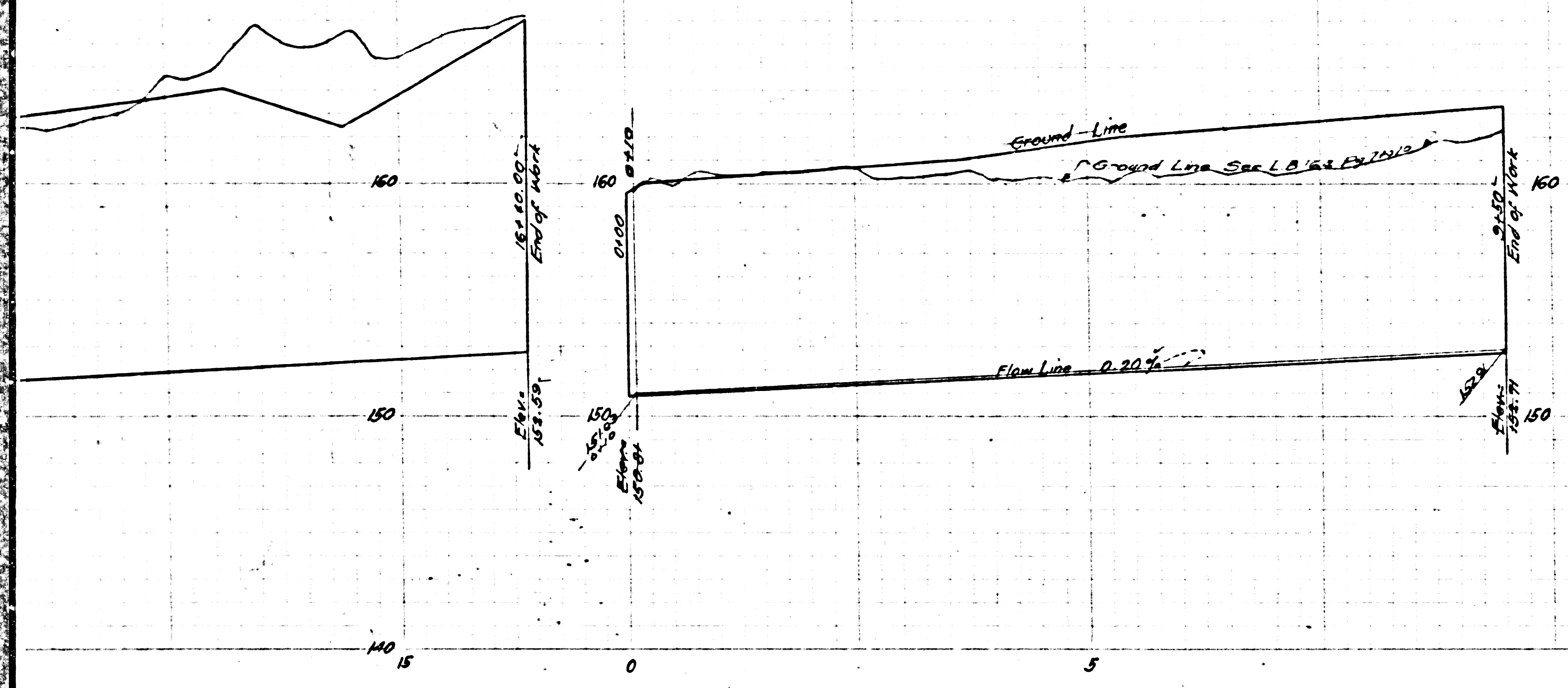
SHEET 4 OF 4 SHEETS
 J. E. ROCKHOLD - COUNTY SURVEYOR
 Submitted *Edward I. Bishop* Senior Engineer
 Approved *J. E. Rockhold* County Surveyor
 Approved as to form
 by *J. J. Matney* Deputy
 County Counsel

Revised by Purkin & Harley July 1927.

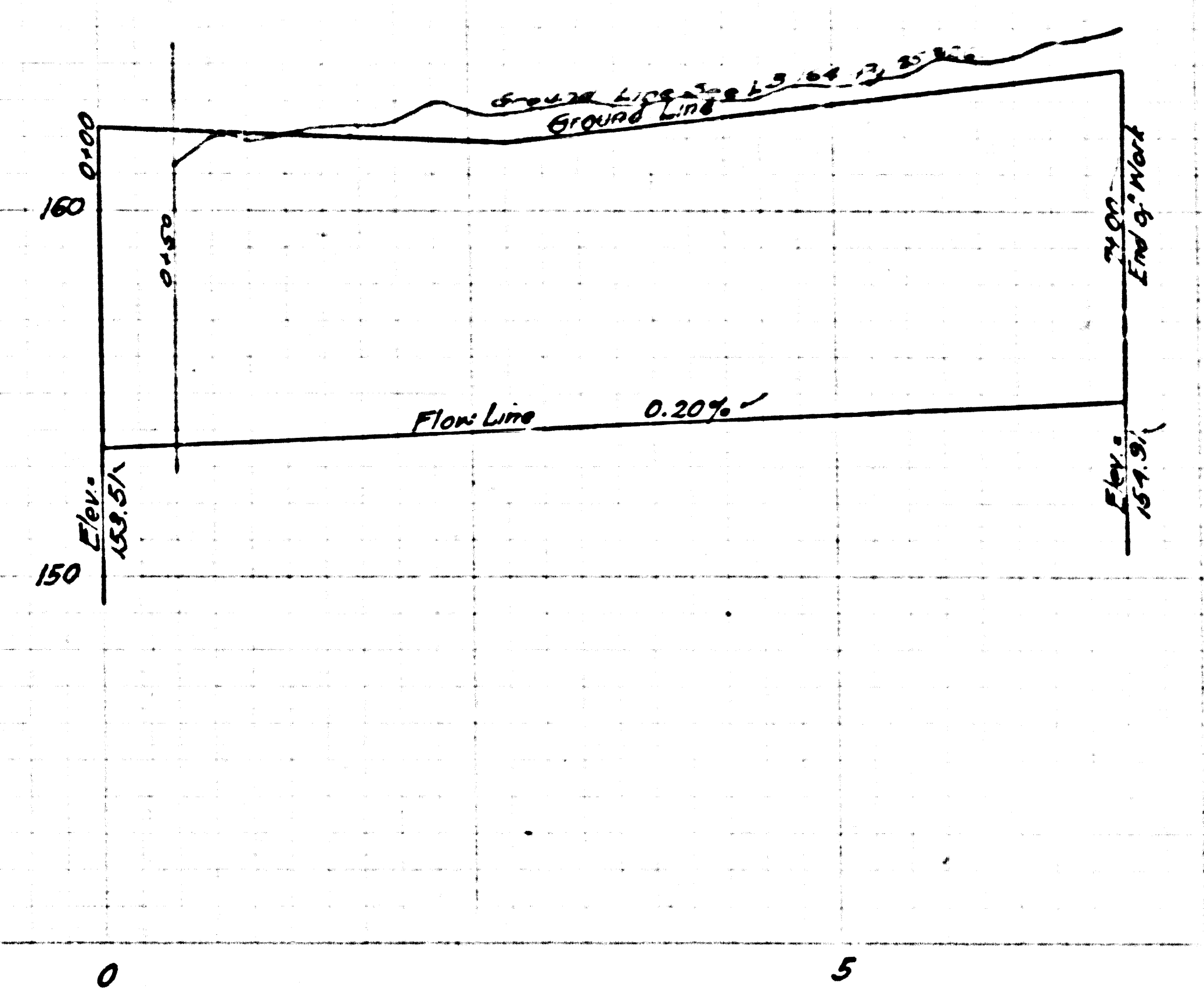
CSB-1181-4
 A4 OF A4

Note:
 The grade lines shown are for the flow line
 or invert of the canal, conduit or pipe.
 Elevations are in feet and are assumed.
 To convert to U.S.G.S. Datum
 add 0.20 ft to elevations
 shown hereon.
 References: L.B. 142
 L.B. 164
 F.B. 99

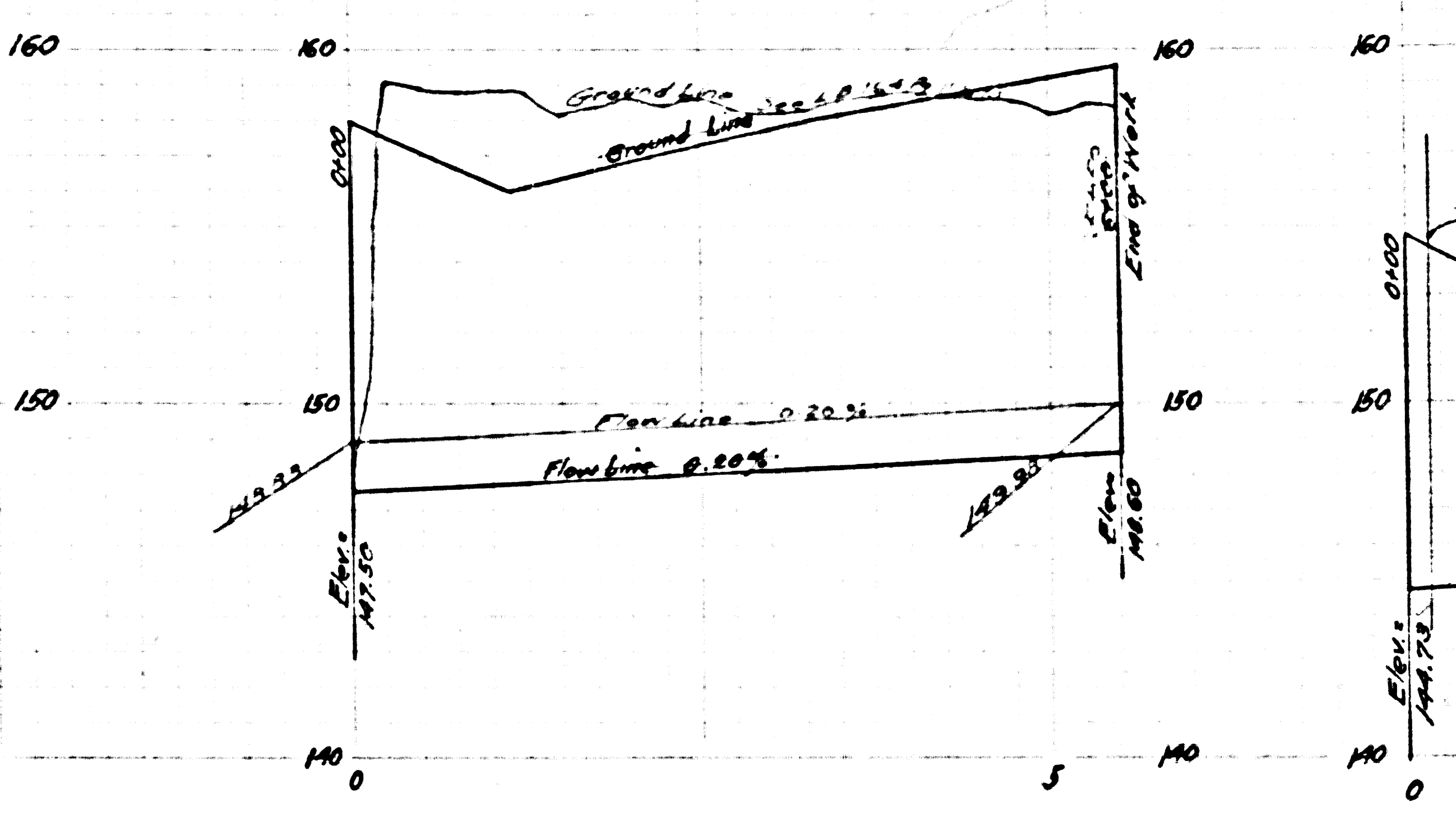




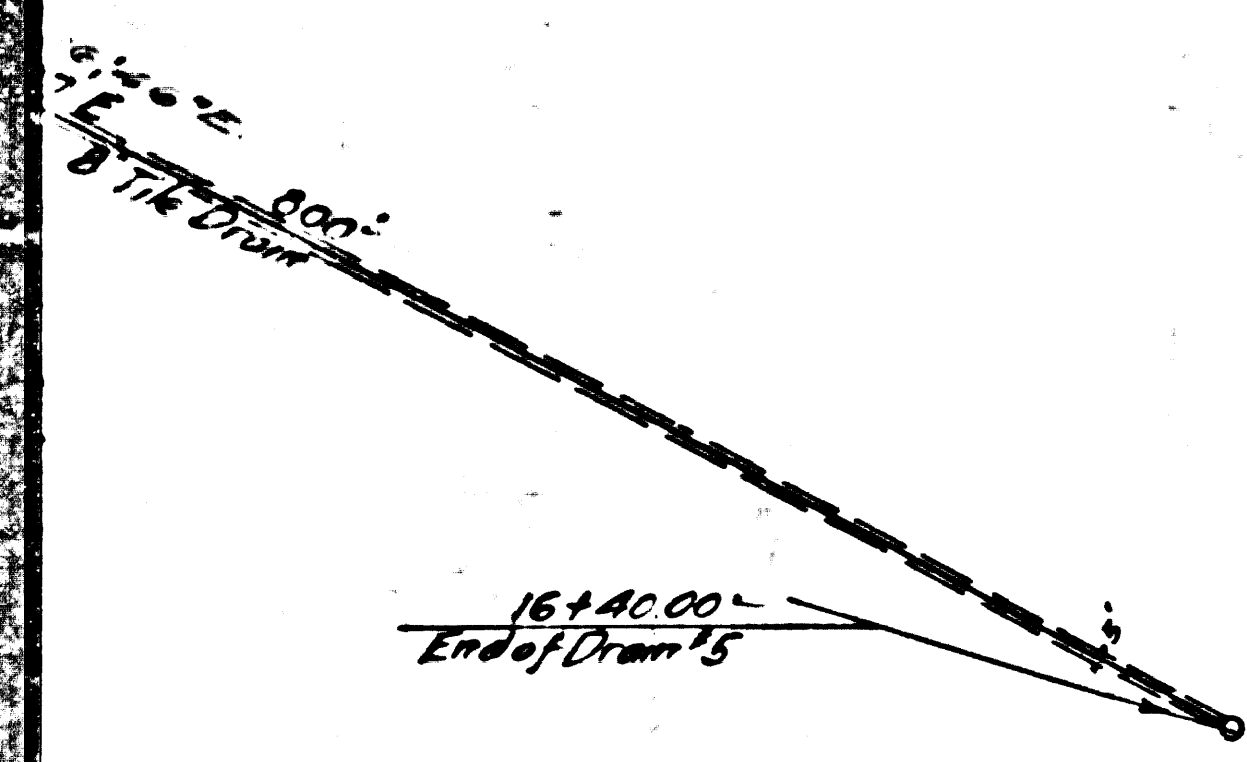
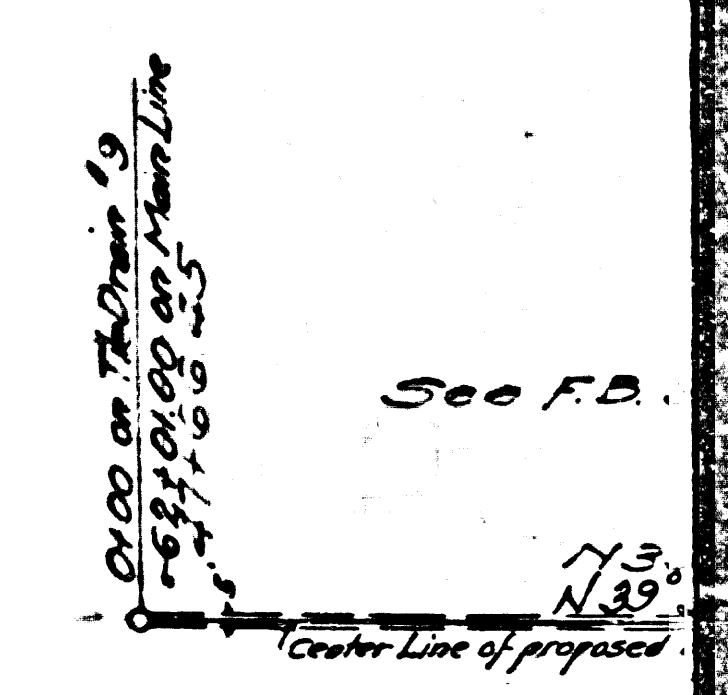
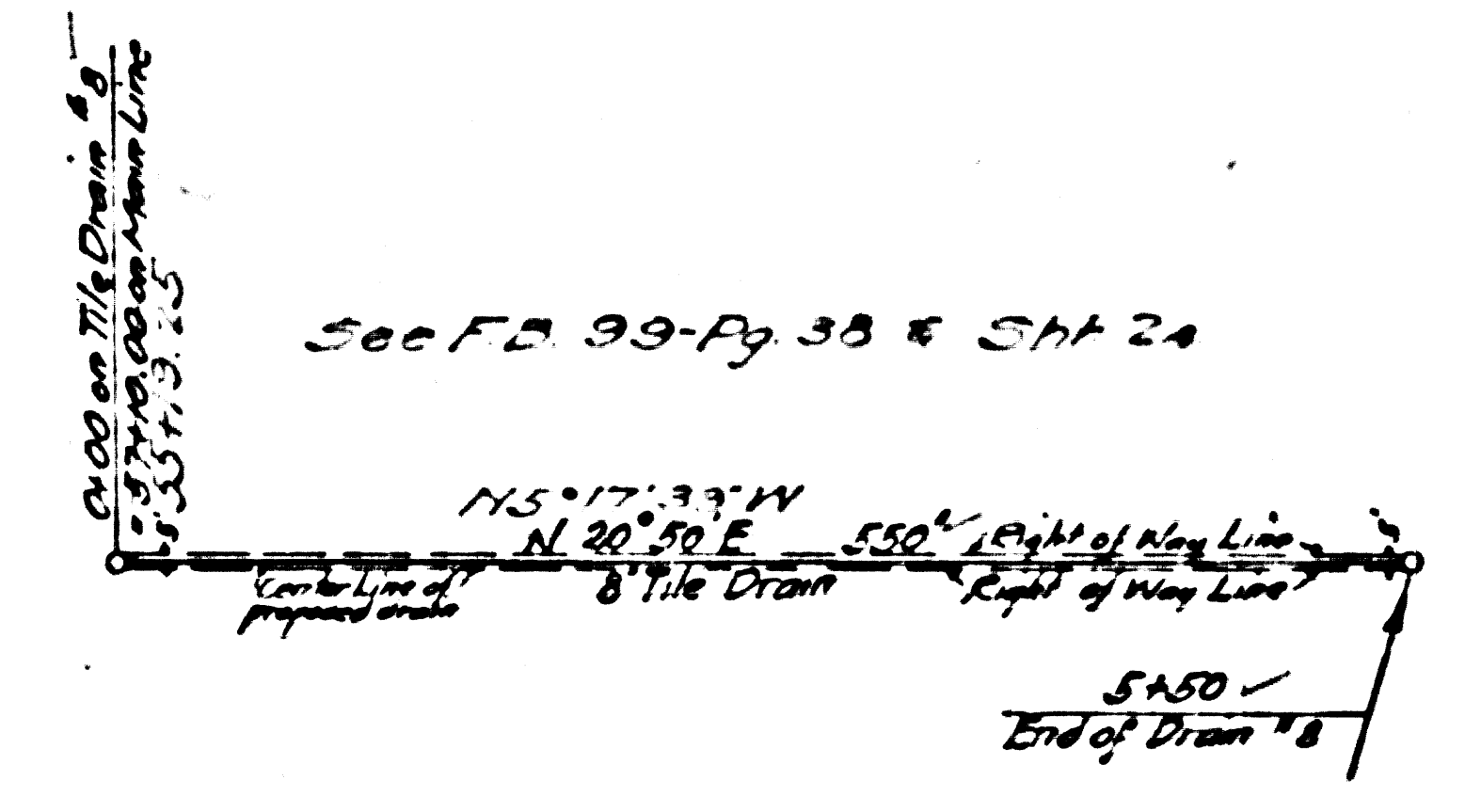
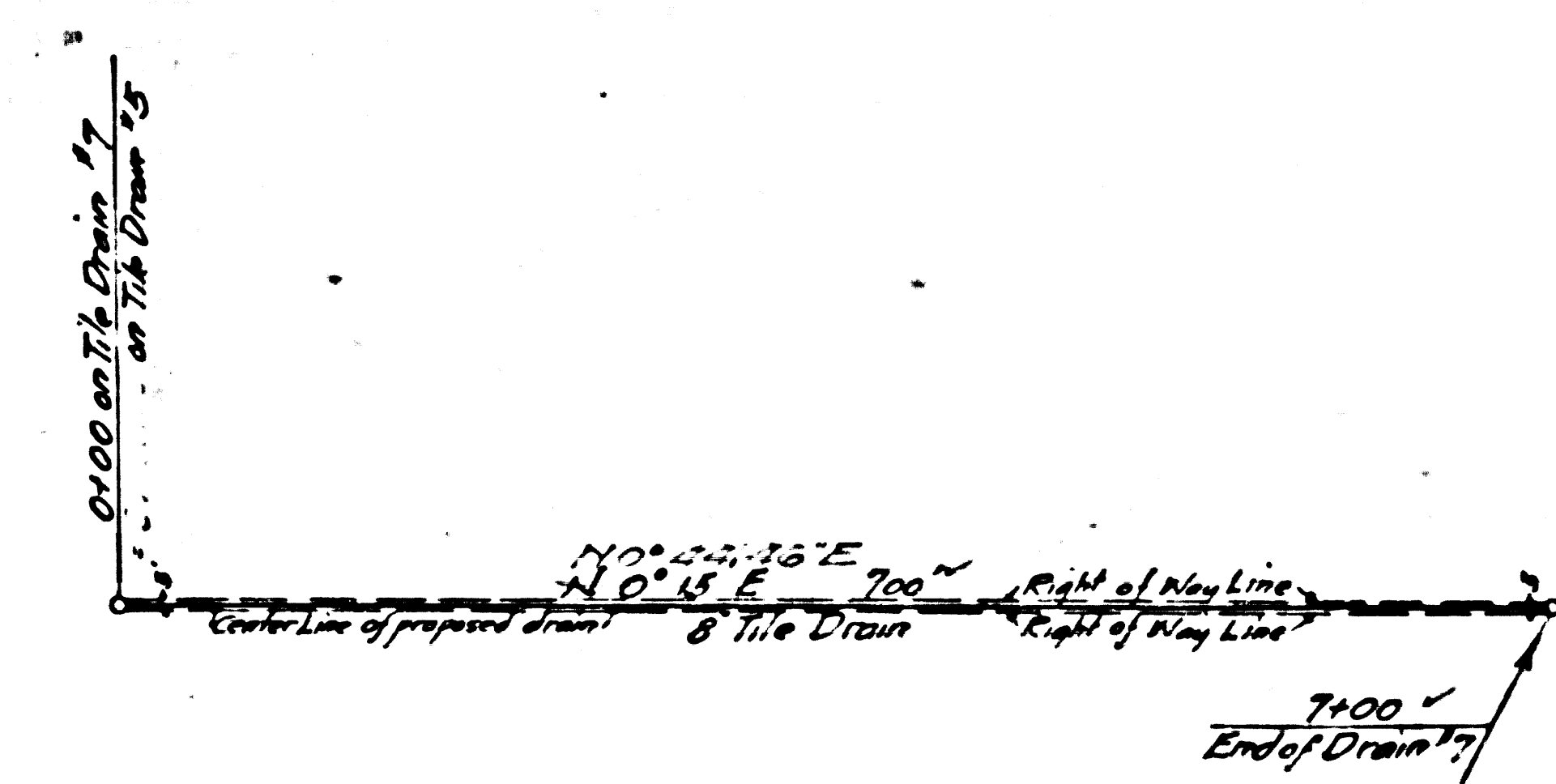
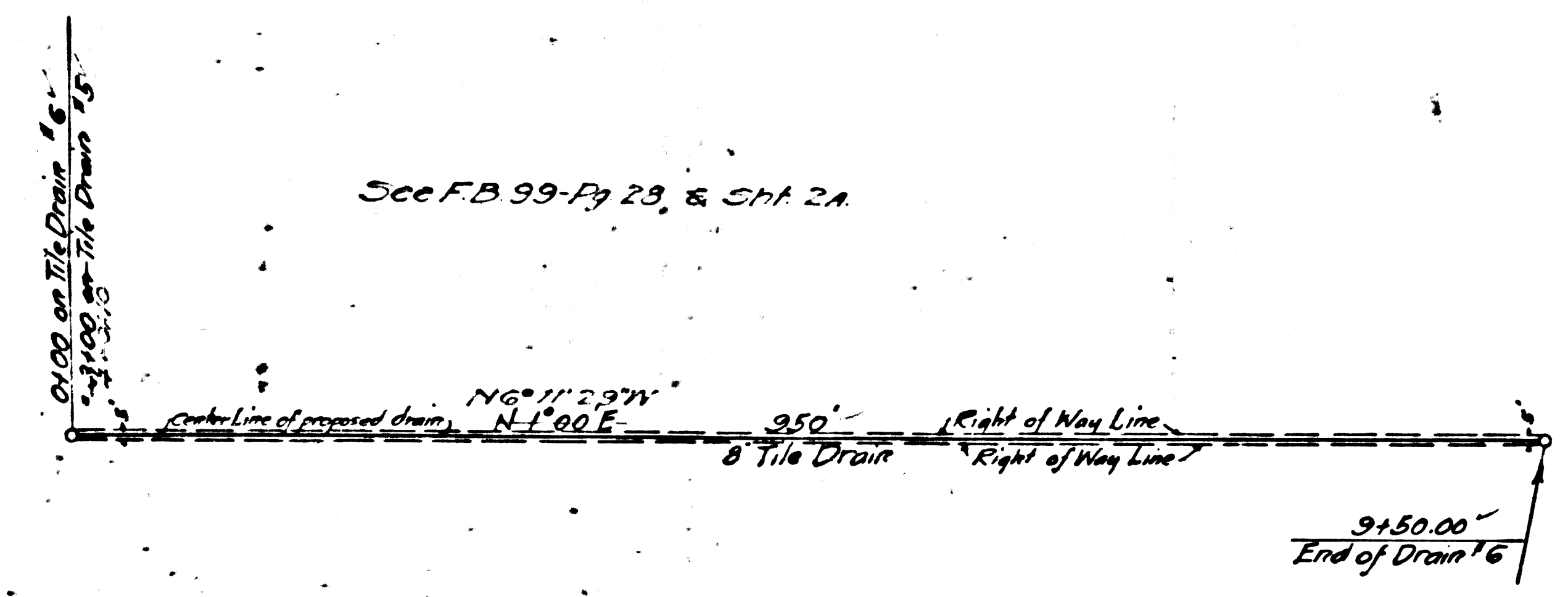
TILE DRAIN #6



TILE DRAIN #7



TILE DRAIN #8



CSB-1181-4
A2 OF A4