

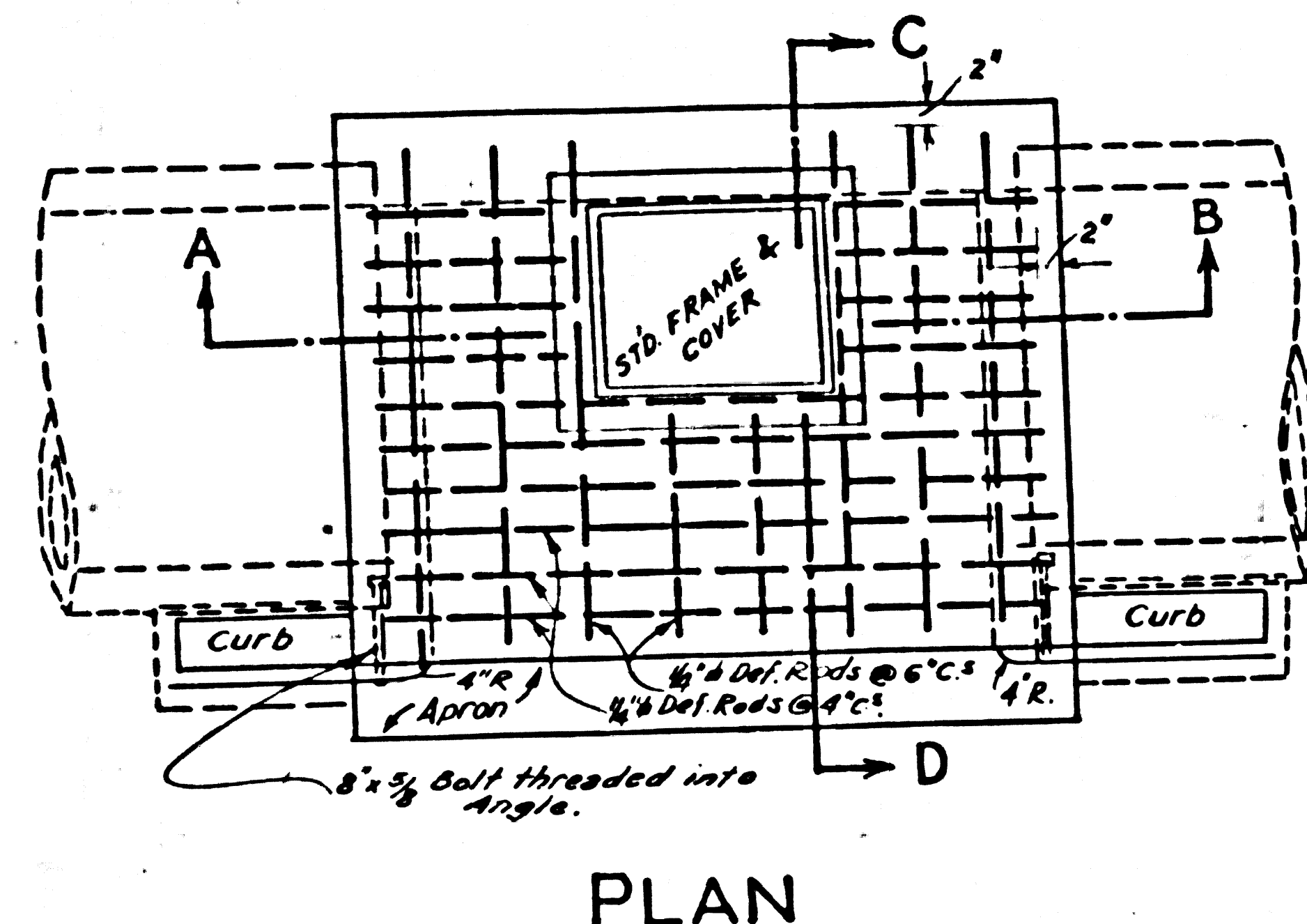
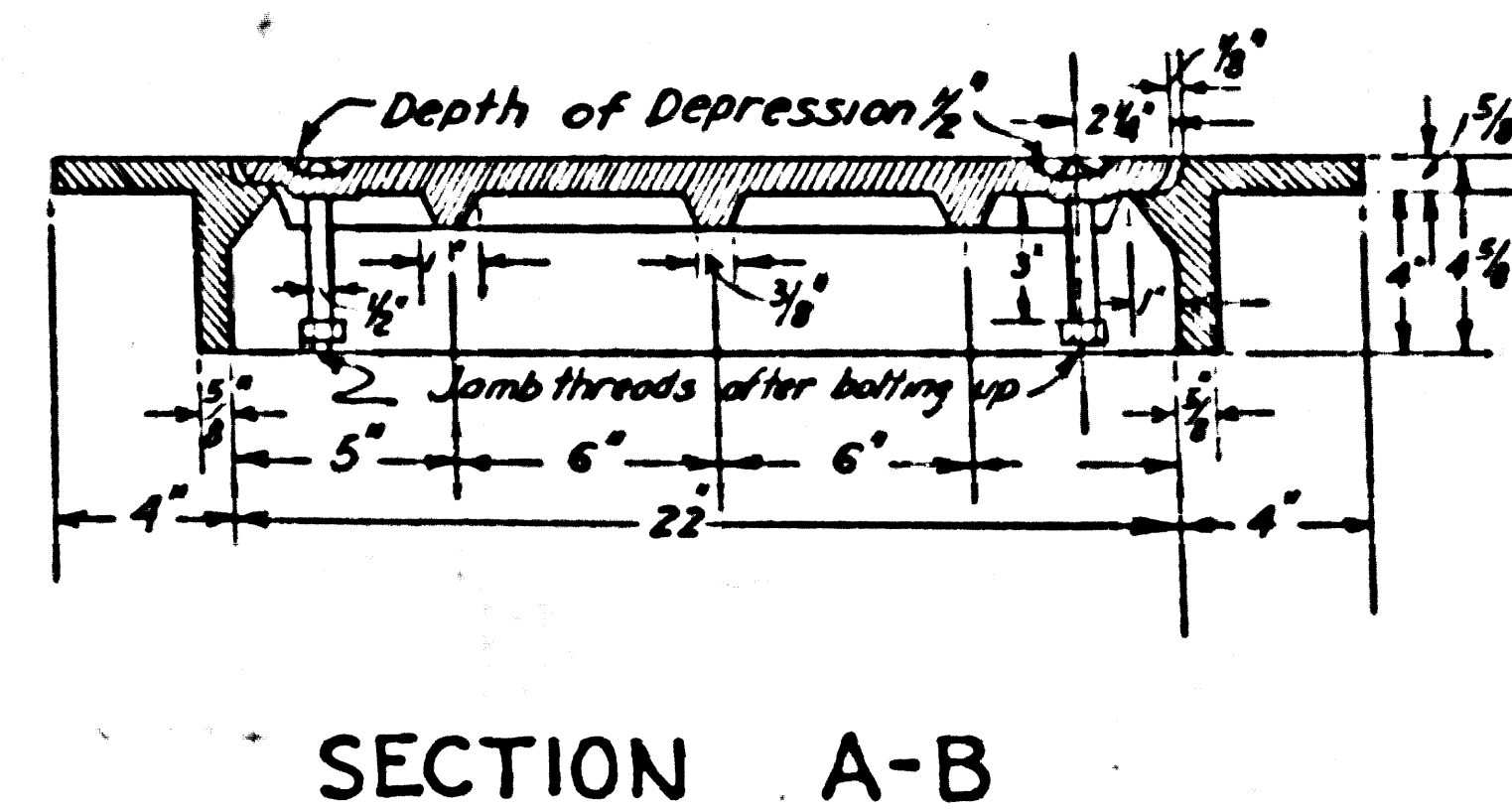
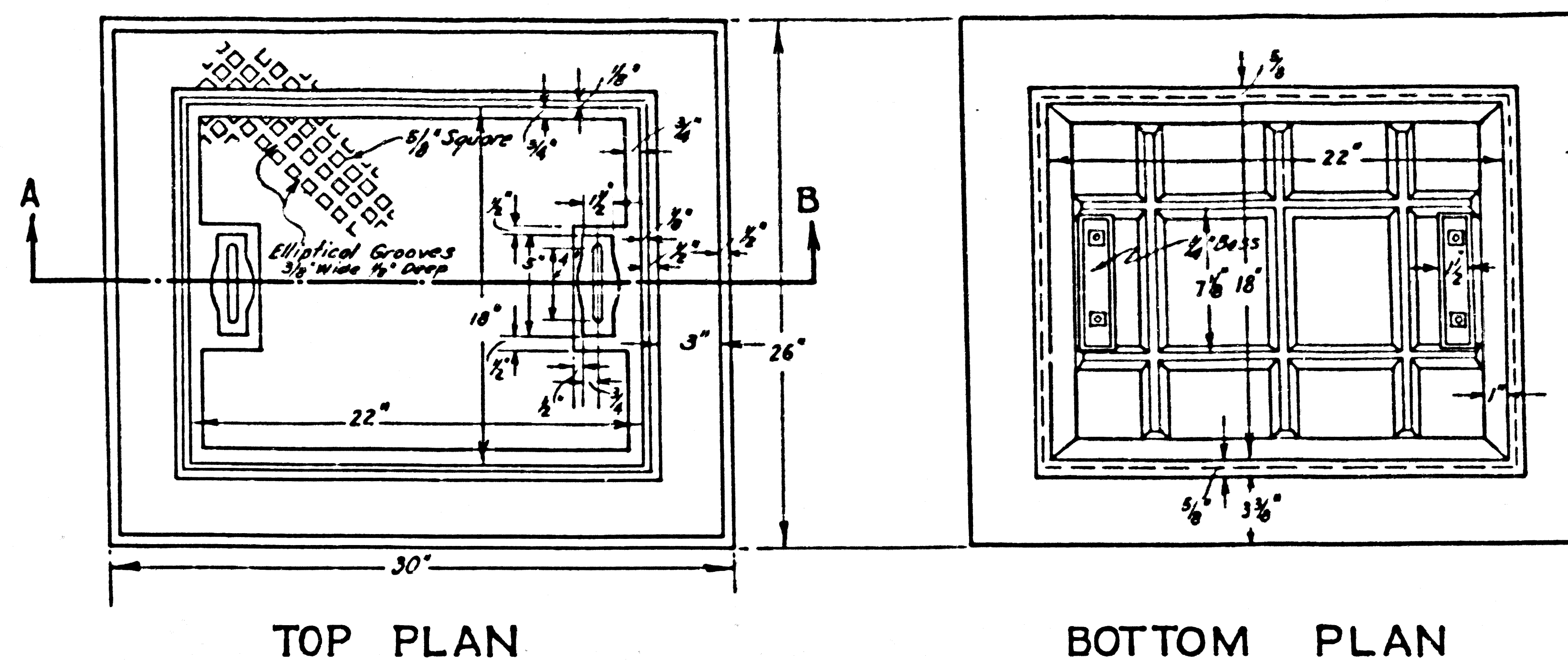
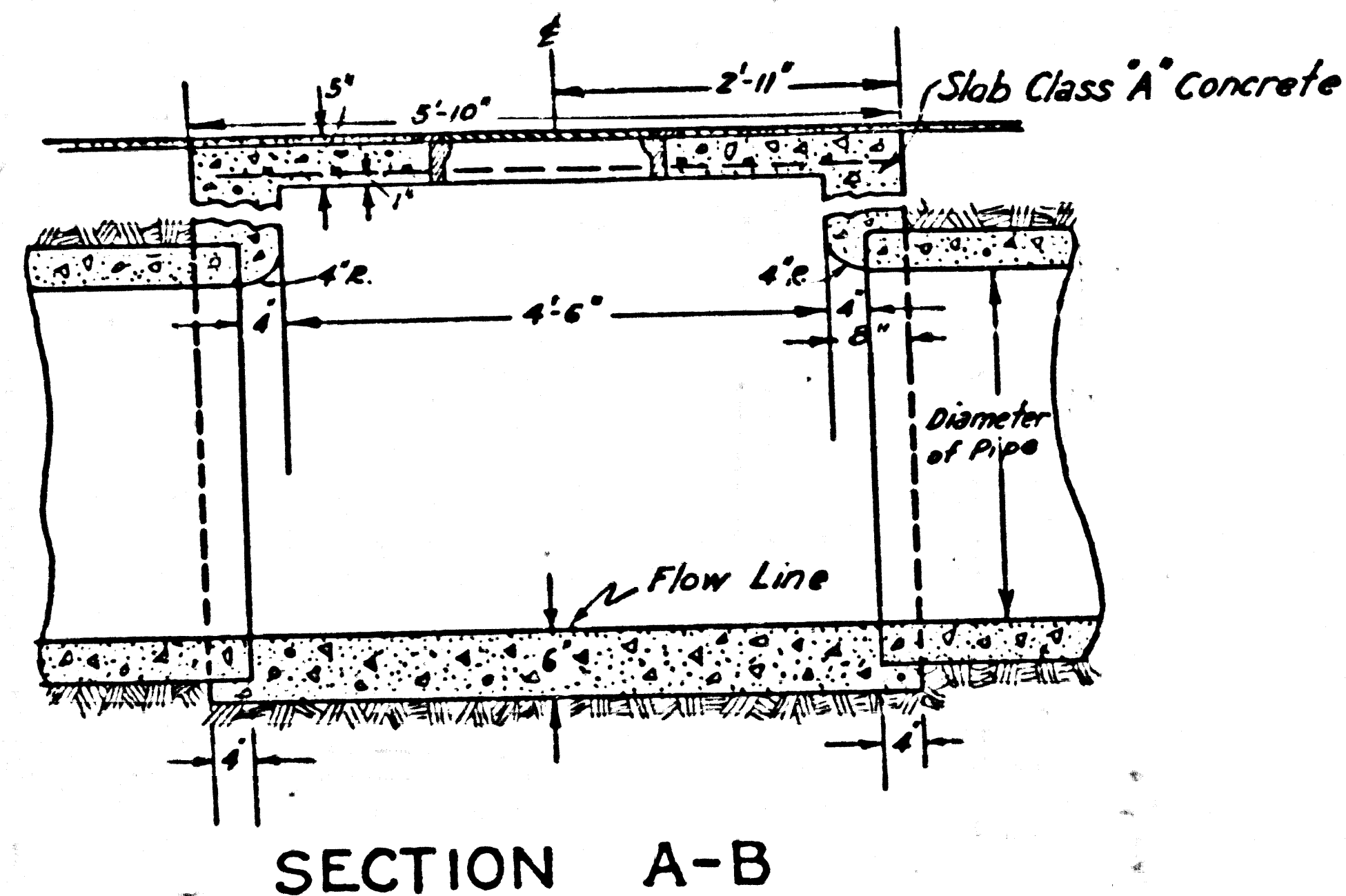
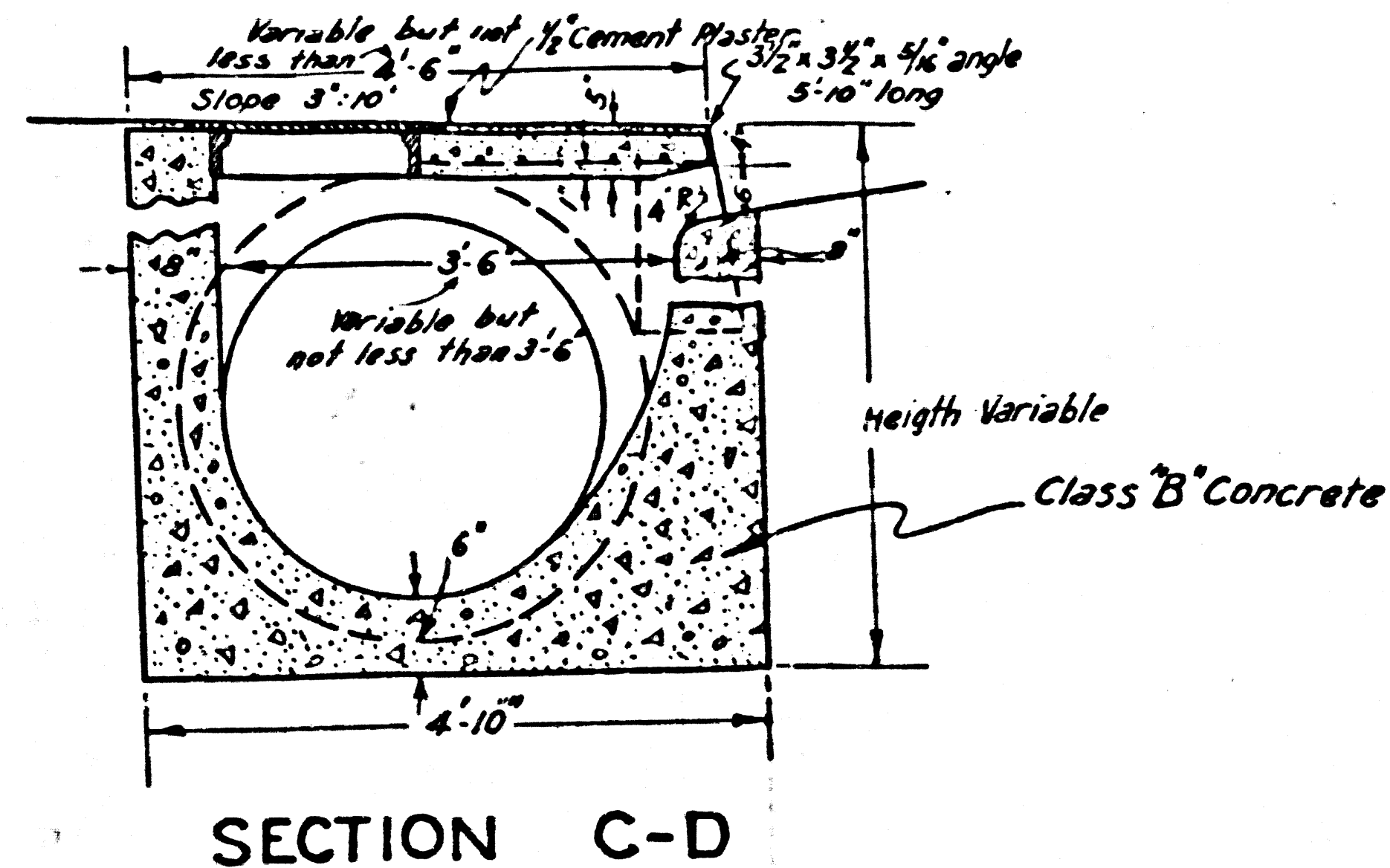
CSB 1182-19  
SHEET 19 OF 21 SHEETS  
COUNTY SURVEYORS MAP NO. B-1185

SHEET 19 OF 21 SHEETS  
COUNTY SURVEYORS MAP NO. B-1185

CSB 1182-19  
SHEET 19 OF 21 SHEETS  
COUNTY SURVEYORS MAP NO. B-1185

SHEET 19 OF 21 SHEETS  
COUNTY SURVEYORS MAP NO. B-1185

### TYPE A.



## DRAINAGE DIST. IMPROVEMENT No. 1182-19 OF LOS ANGELES COUNTY, CALIF. DETAILS OF STANDARD FRAME AND COVER AND CATCH BASIN

J. E. ROCKHOLD  
COUNTY SURVEYOR  
December 1924  
Submitted  
Approved

*Adwards*  
SENIOR ENGINEER

*J. E. Rockhold*  
COUNTY SURVEYOR

Approved as to form  
Edward T. Bishop  
County Counsel

By *J. J. Rooney*  
DEPUTY

D. D. I. No. 11		
DRAWN	J. J. Renie	12-24
TRACED	J. J. Renie	12-24
CHECKED	A. M. Rowen	12-24

CSB 1182-19  
A1 OF A1