

DRAINAGE DISTRICT IMPROVEMENT NO. 11.

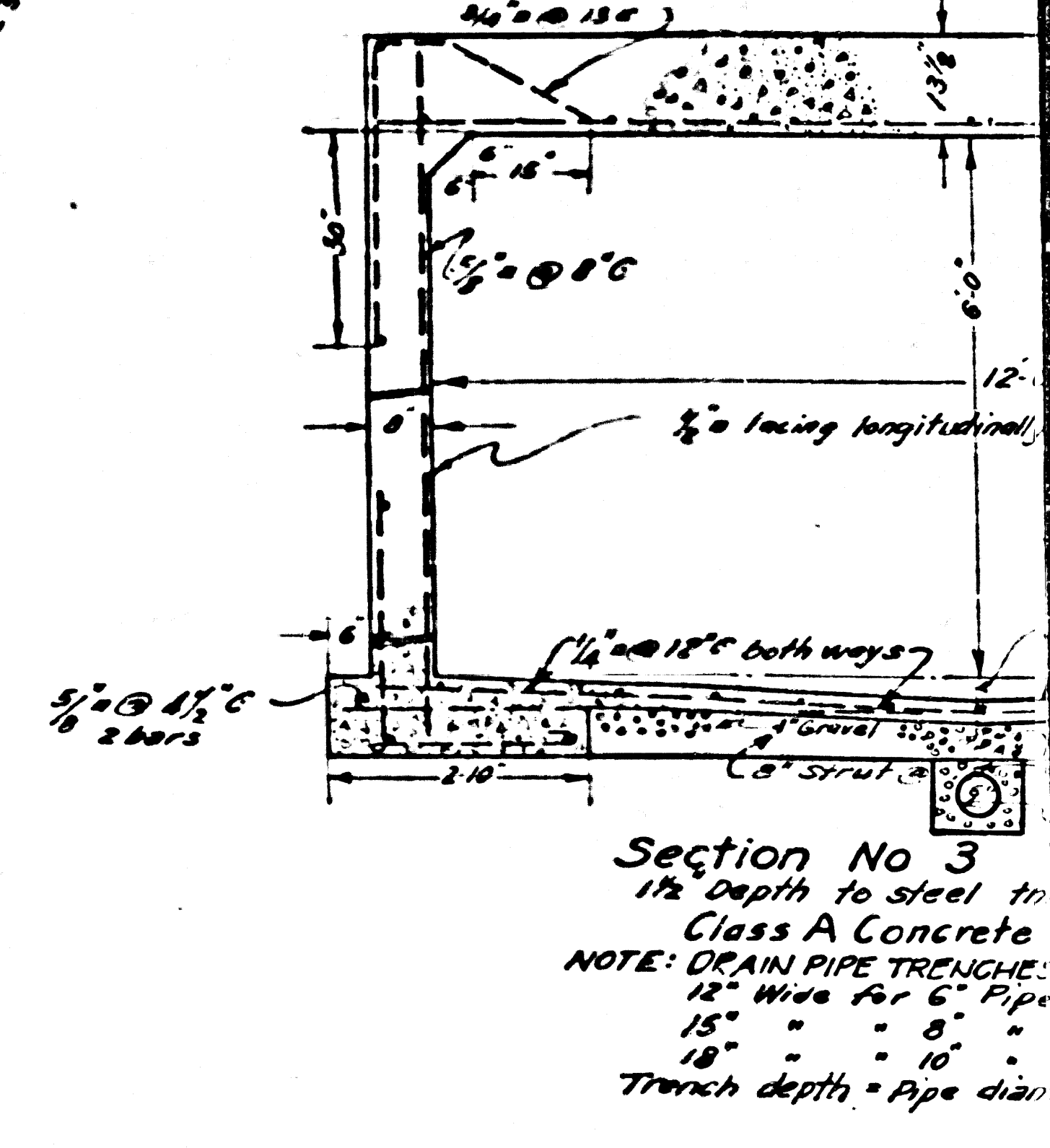
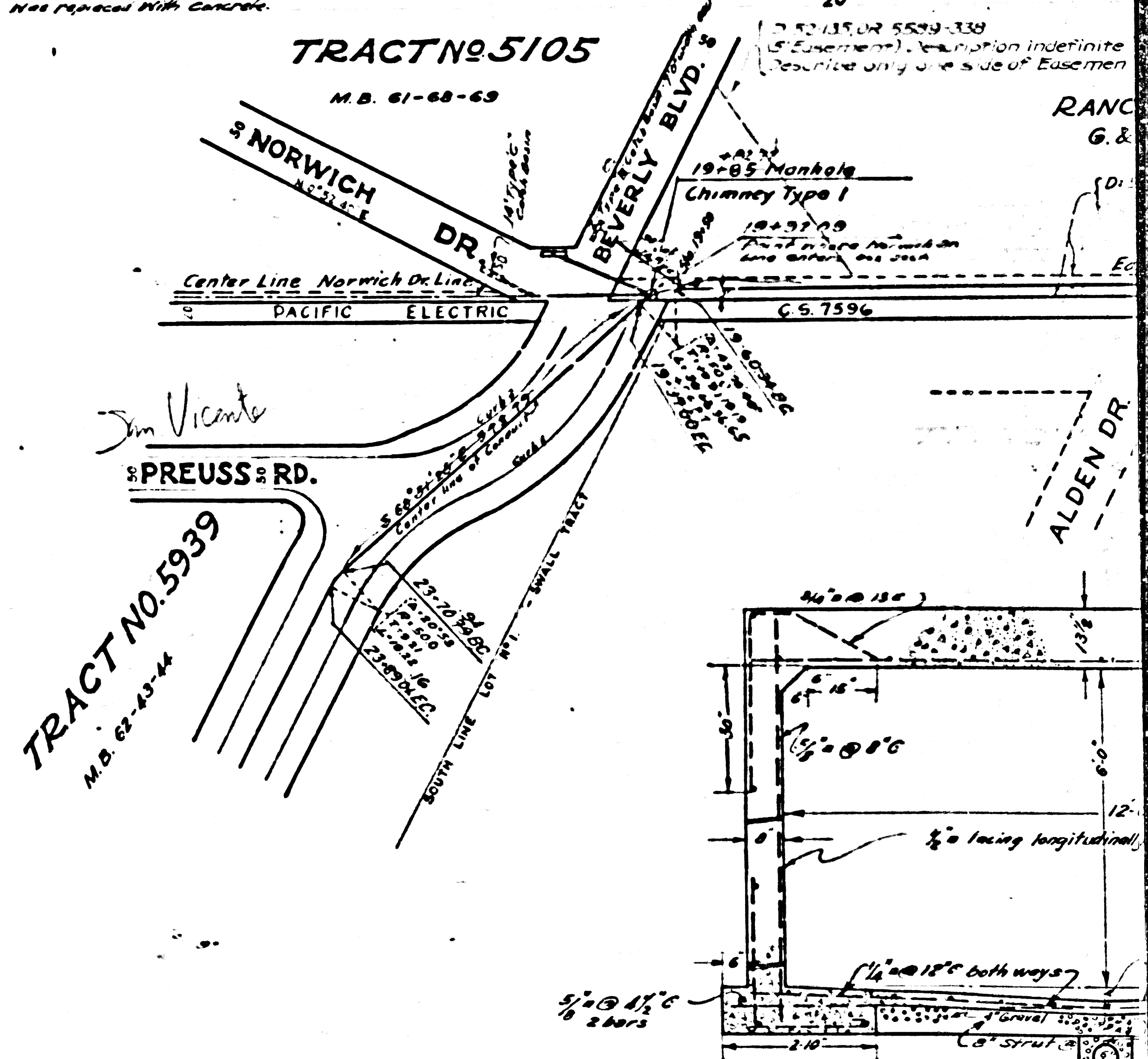
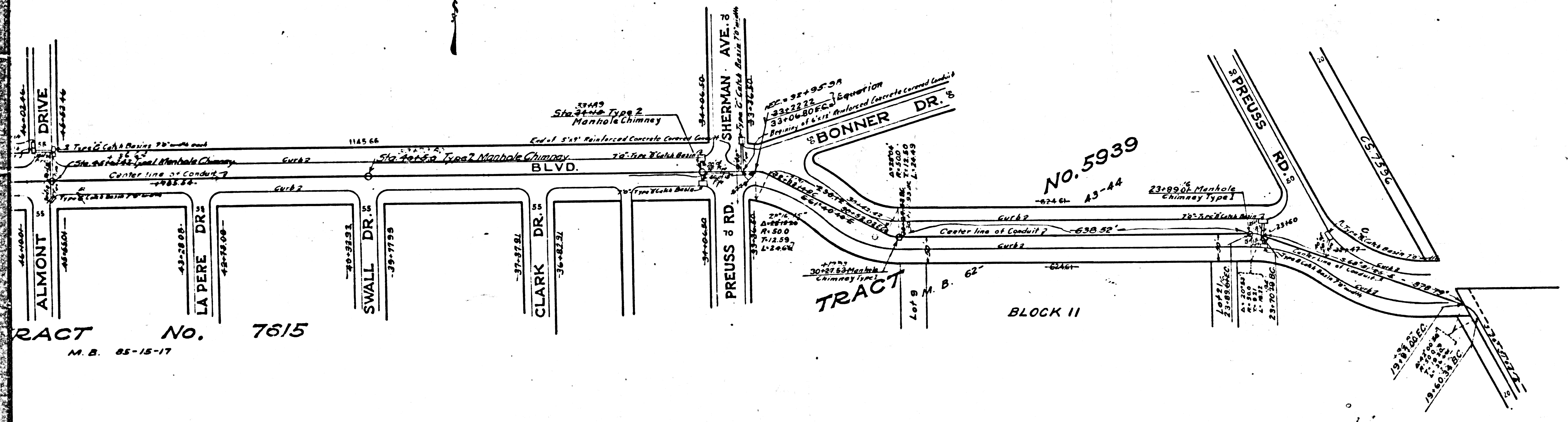
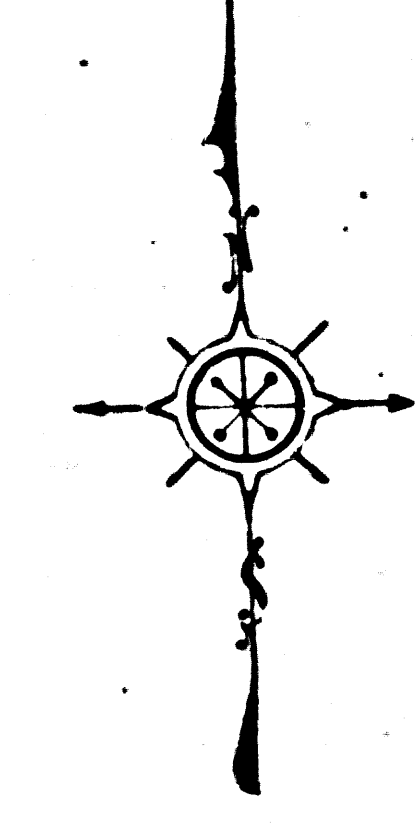
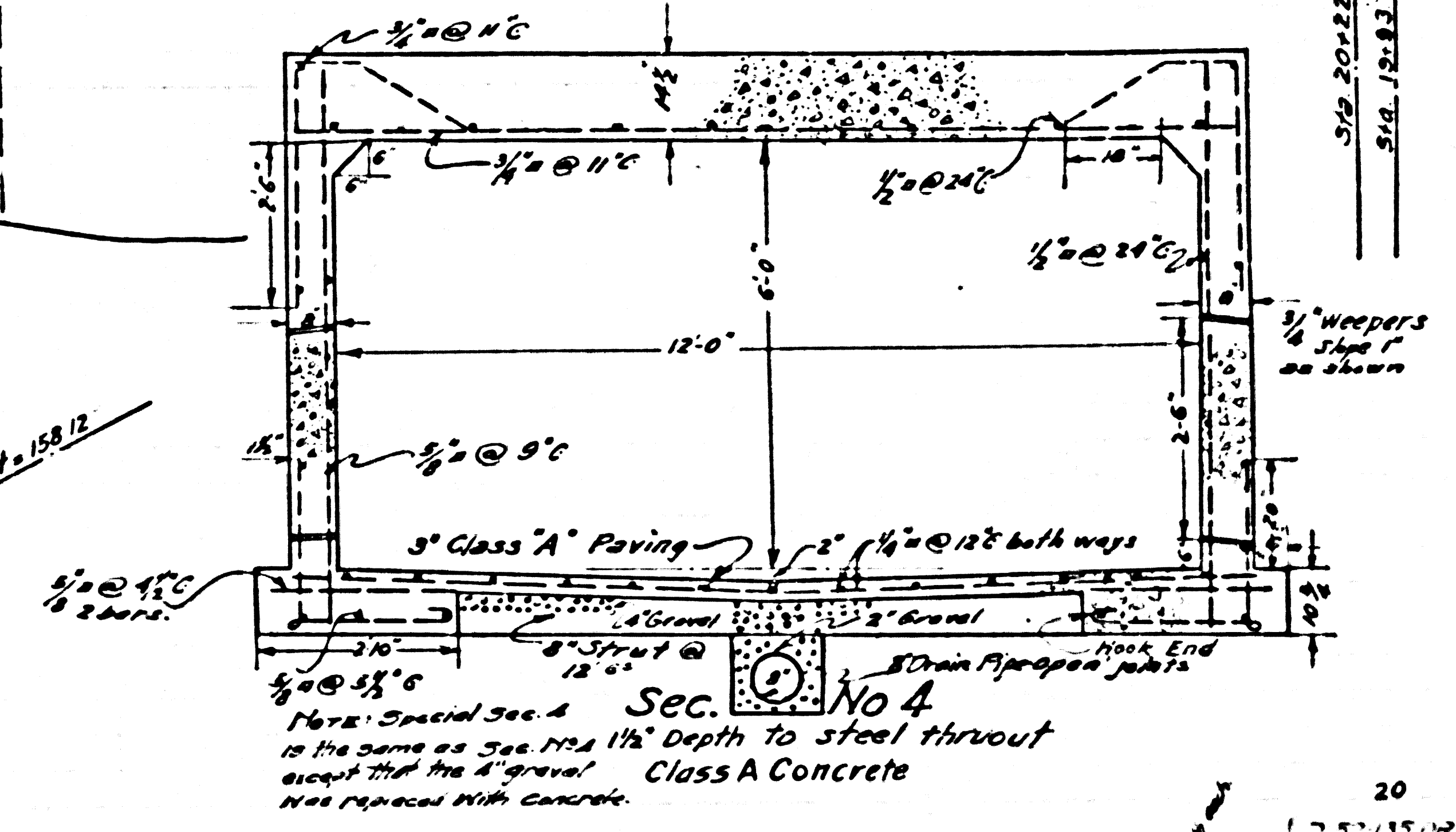
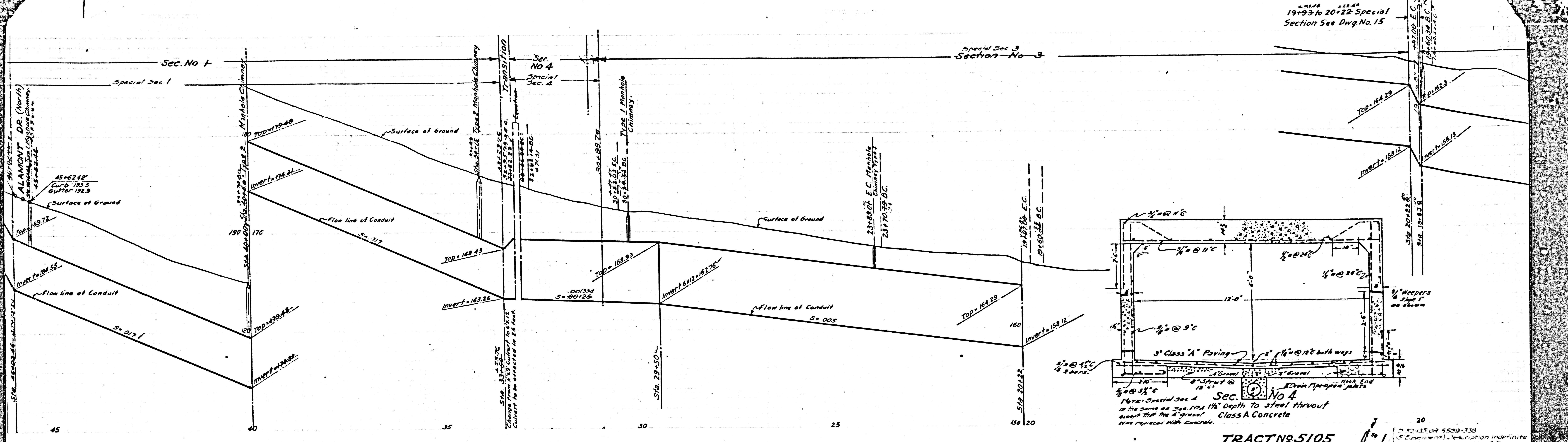
OF THE
 COUNTY OF LOS ANGELES
 PLAN AND PROFILE OF
 BEVERLY BLVD. - SHERMAN JCT. LINE
 SCALES: (VERT. - 1" = 4'
 (HORIZ. - 1" = 100'
 OCTOBER 1924.

SHEET 3 OF 21 SHEETS
 J. E. ROCKHOLD COUNTY SURVEYOR
 Submitted *Alvarez* Approved *J.E. Rockhold*
 SENIOR ENGINEER COUNTY SURVEYOR

Approved as to form
 Edward T. Bishop
 County Counsel
 By *J. Thomey*
 DEPUTY

CSB 1182-3
 A1 of A3

D. D. I. No. 11		
DRAWN BY	Ramm, Howe, Mac	Sept. 1924
TRACED BY	J. J. Kennel	Sept. 22, 24
CHECKED BY		Nov. 24
		1-4-27

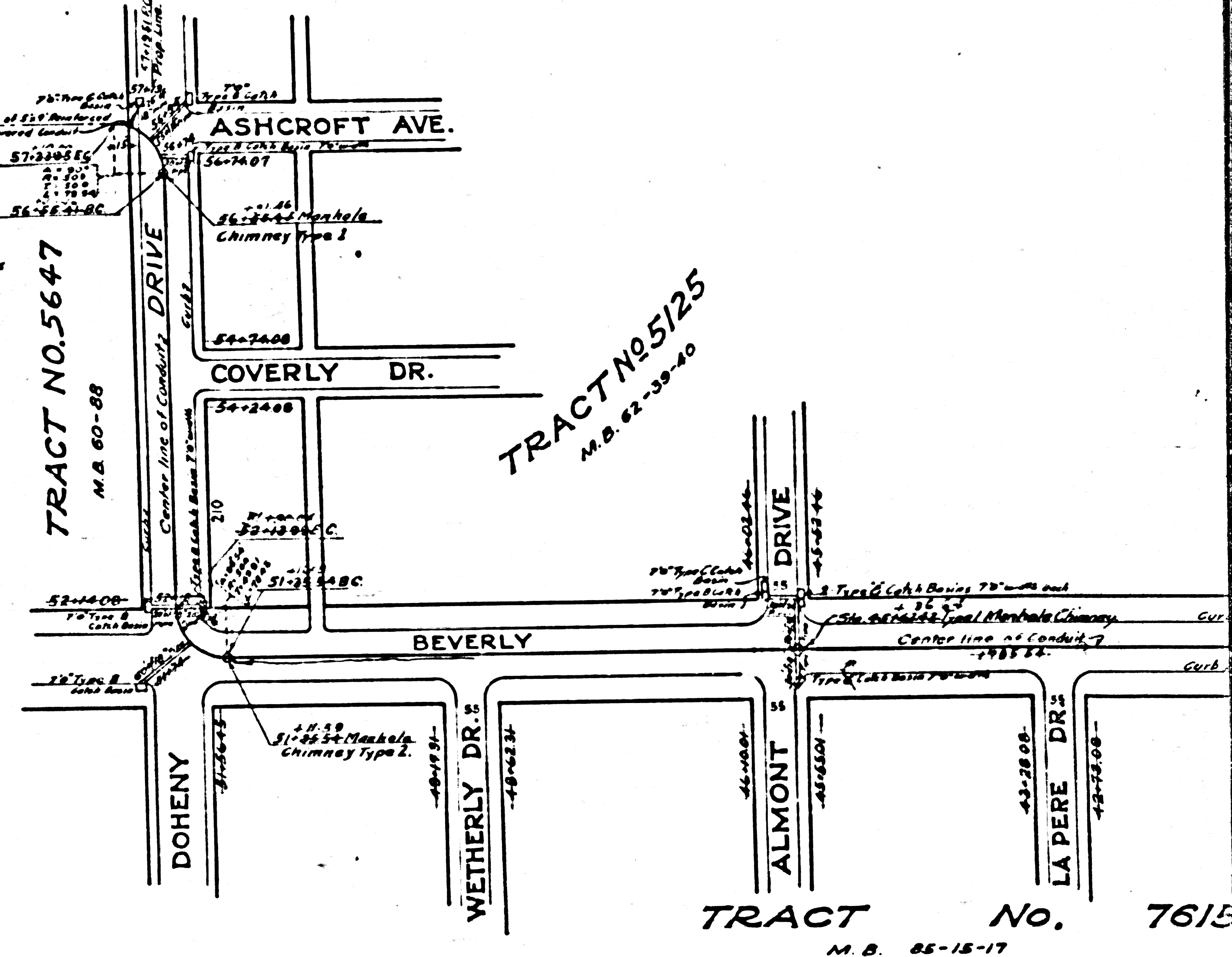
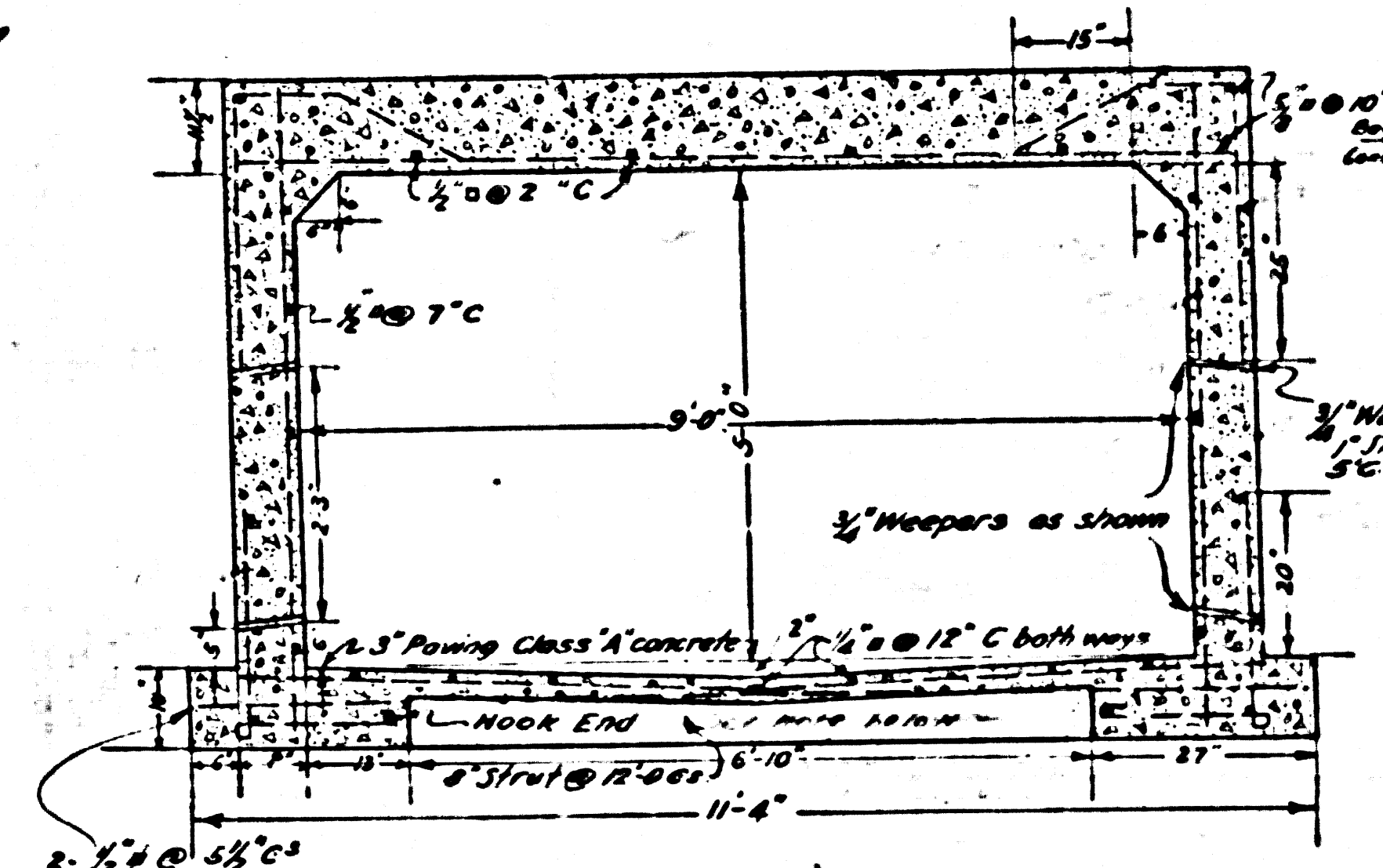
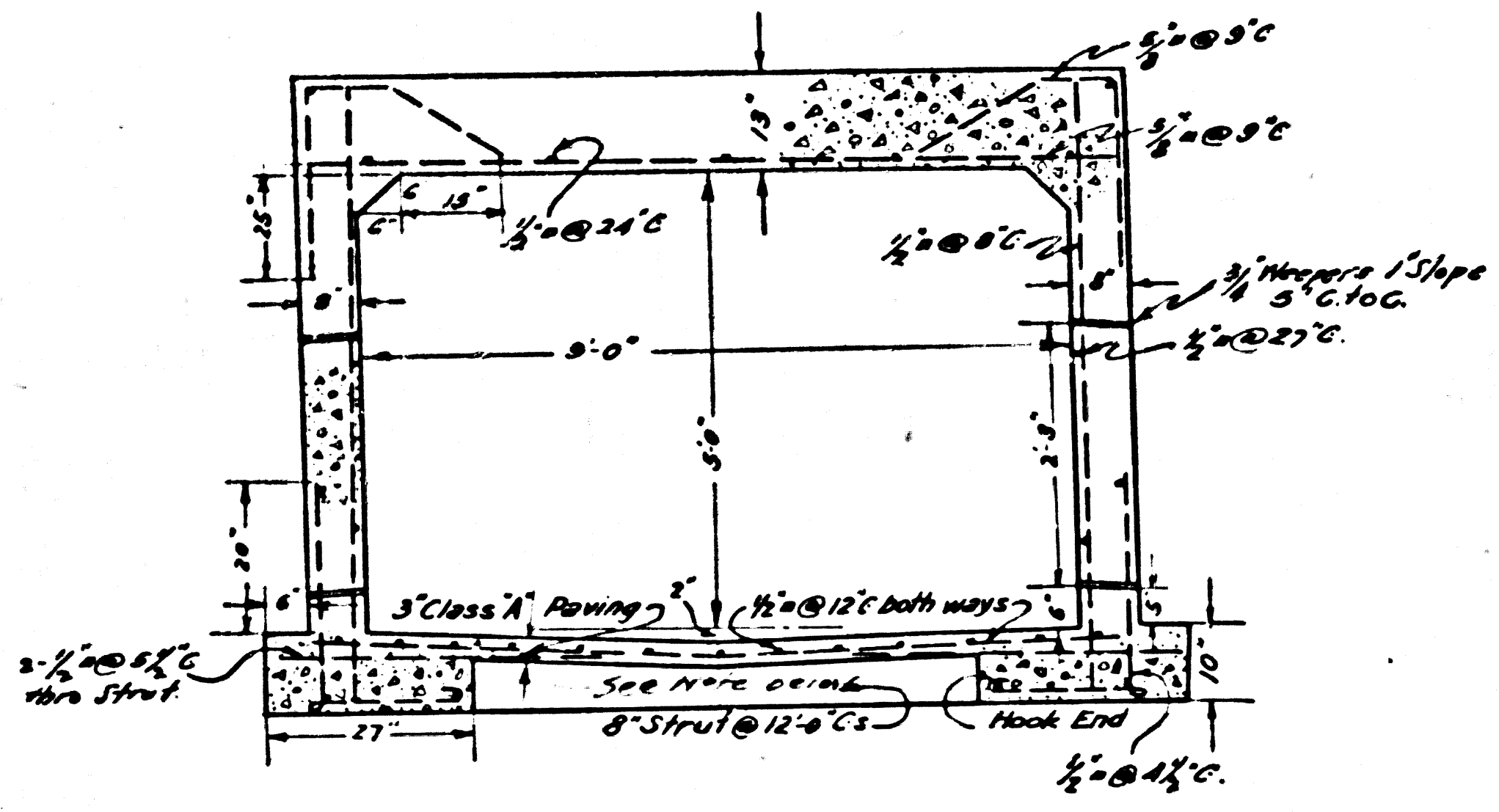
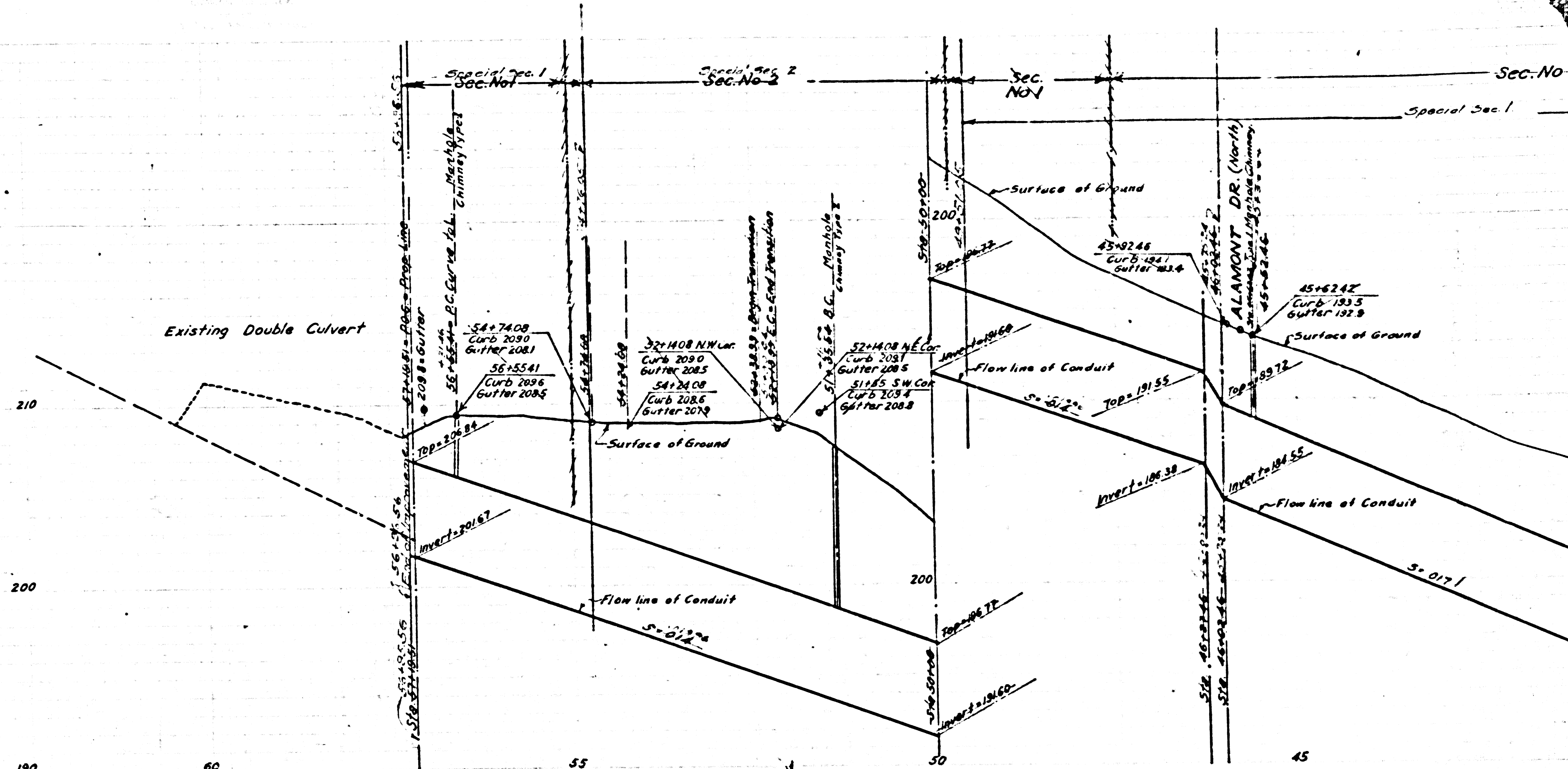


TRACT No. 7615
M.B. 65-15-17

CSB 1182-3
A2 of A3

Section No. 3
1 1/2' depth to steel top
Class A Concrete
NOTE: DRAIN PIPE TRENCHES
12" Wide For 8" Pipe
15" " " 10" "
18" " " 12" "
Trench depth = Pipe dia.

ENLARGED TAB 16 B-1185



CSB 1182-3
A3 of A3