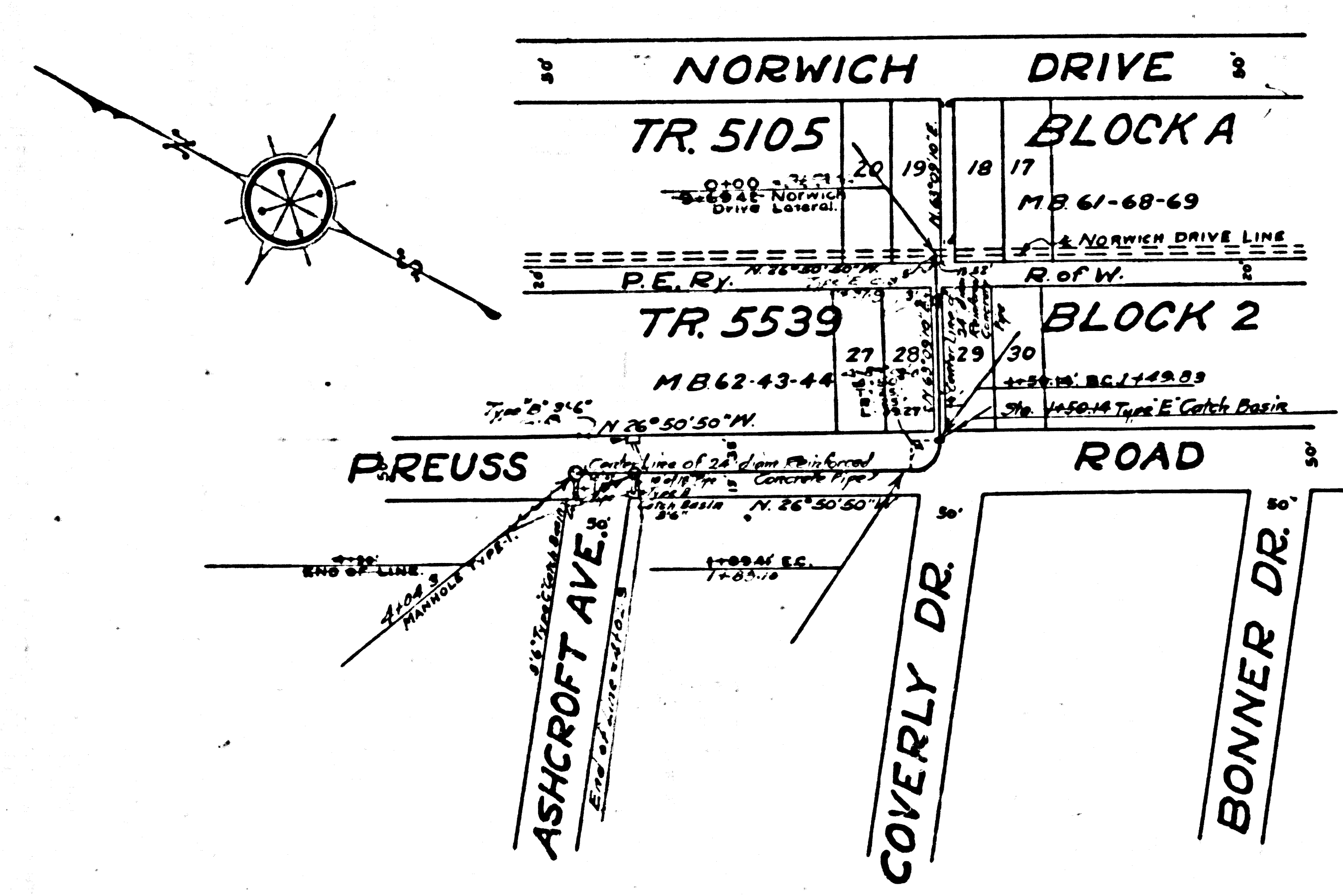
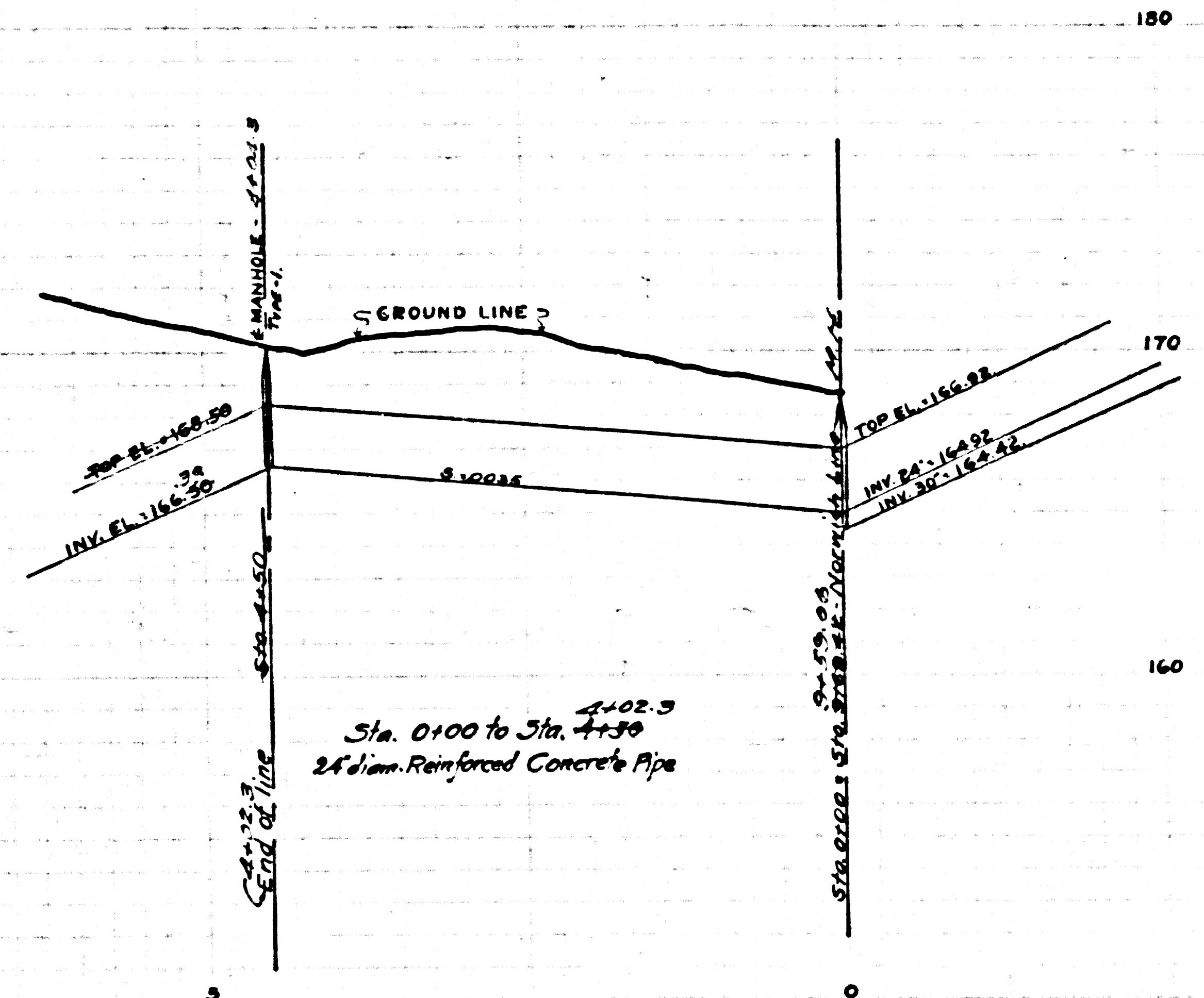


CONTINUED FROM SHEET 1 OF 21 SHEETS  
COUNTY SURVEYORS MAP NO. B-1185

SHEET NO. 2 OF 21 SHEETS  
COUNTY SURVEYORS MAP NO. B-1185



# DRAINAGE DISTRICT IMPROVEMENT NO. 11.

OF THE  
COUNTY OF LOS ANGELES  
PLAN AND PROFILE OF  
PREUSS ROAD LINE

SCALES (VERTICAL 1"=4'-0"  
HORIZONTAL 1"=100' OCTOBER 1924

SHEETS OF 21 SHEETS  
J. E. ROCKHOLD - COUNTY SURVEYOR

Submitted *Alvarez*  
Senior Engineer  
Approved *J. E. Rockhold*  
County Surveyor

Approved as to form  
Edward T. Bishop  
County Counsel  
by *J. J. Morony*  
Deputy

Note: Elevations are in feet above U.S.G.S. or mean sea level datum.

CSB 1182-5  
A1 of A1

D.D.I. No. 11.	
Drawn by Burns	Oct 1924
Traced by McMillan	" "
Checked by Row	" "

CONTINUED SHEET 2 OF 21 SHEETS  
COUNTY SURVEYORS MAP NO. B-1185

SHEET NO. 2 OF 21 SHEETS  
COUNTY SURVEYORS MAP NO. B-1185