

# DRAINAGE DISTRICT IMPROVEMENT NO. 11.

OF THE  
 COUNTY OF LOS ANGELES  
 PLAN AND PROFILE OF  
 LA JOLLA AVE. LINE

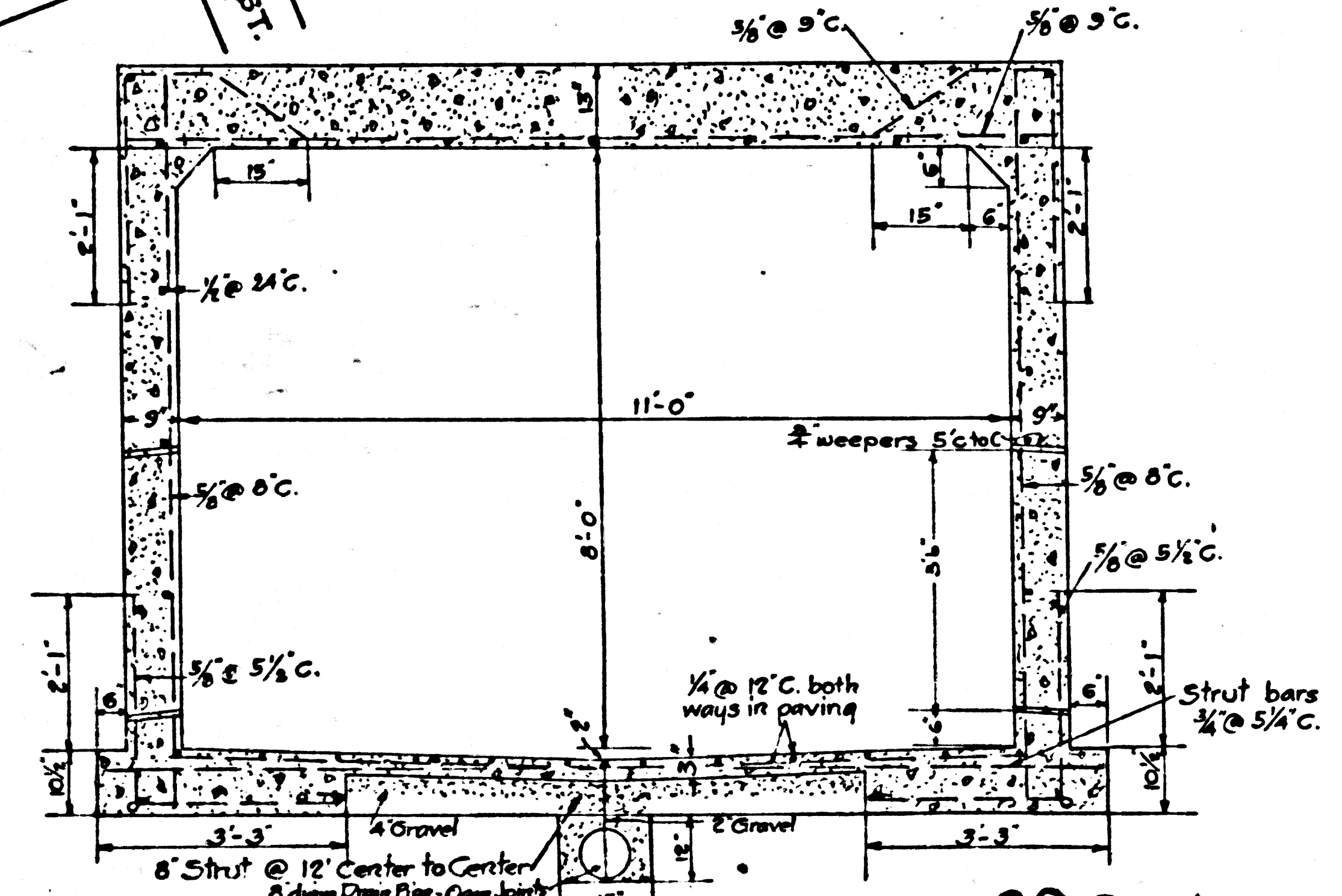
SCALES: (VERT. - 1" = 4'  
 (HORIZ. - 1" = 100'      OCTOBER 1924

SHEET 6 OF 21 SHEETS  
 J. E. ROCKHOLD      COUNTY SURVEYOR

Submitted *adwarr*      Approved *J.E. Rockhold*  
 SENIOR ENGINEER      COUNTY SURVEYOR

Approved as to form  
 Edward T. Bishop  
 County Counsel

By *J. J. Burns*  
 DEPUTY



SECTION NO. 8.  
 SCALE 1/4" = 1'-0"  
 12" depth to steel thruout.  
 Class 'A' Concrete  
 Note: Special Sec. A is the same as Sec. 117B except that concrete replaces the 4" gravel.

CSB 1182-6  
 A1 of A2

Note: Elevations are in feet above U.S.S. or mean sea level datum.

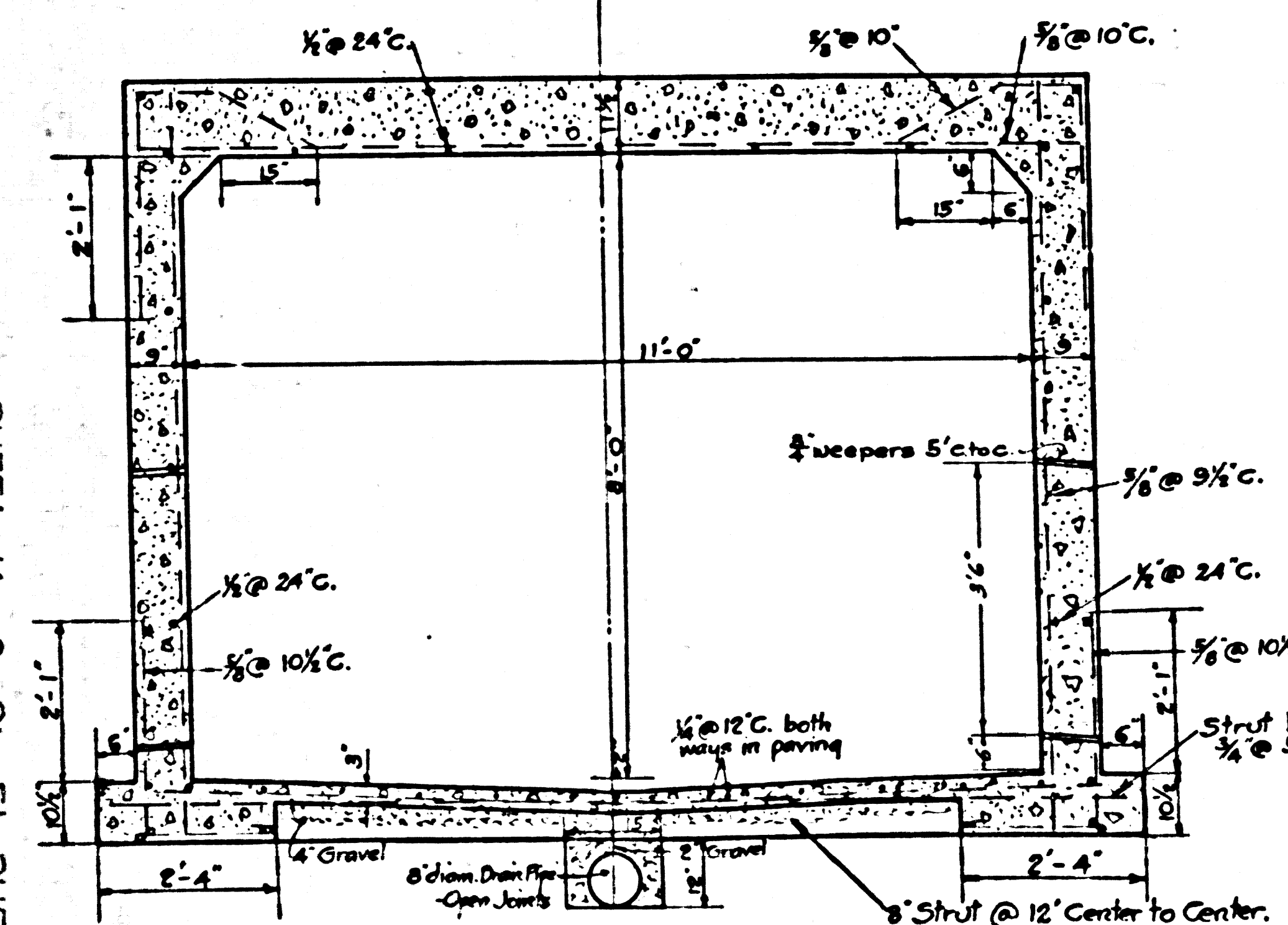
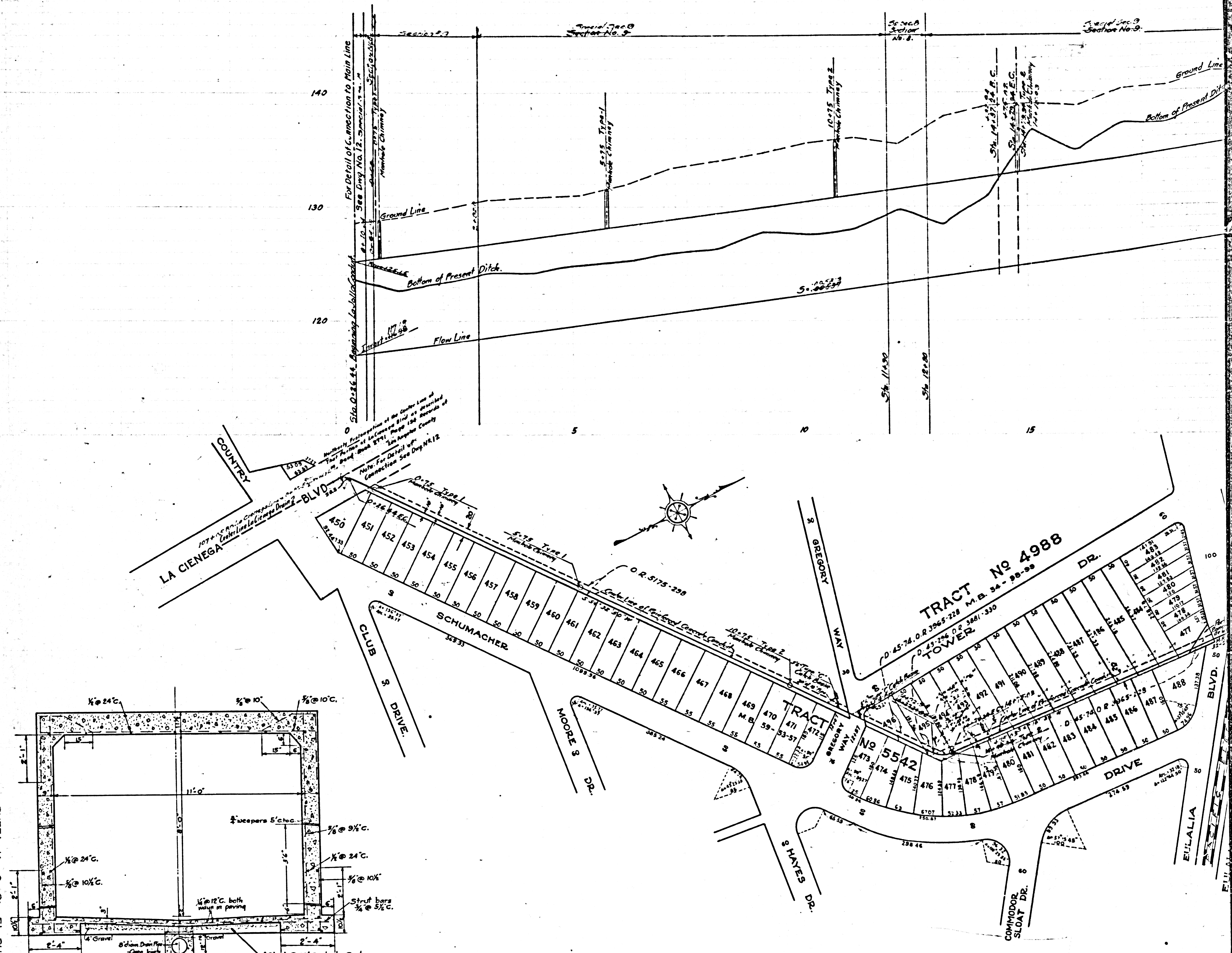
D. D. I. No 11		
DRAWN BY	A.P. Collins	Sept 1924
TRACED BY	J.J. Renie	Oct. "
CHECKED BY	J.J. Burns	" "
Checked		2-A 77

CSB 1182-6 9 AM. COUNTY SURVEYOR. Y.T.H. 100  
 21-3-24 15 40 8 PM 133H2

COUNTY SURVEYOR'S MAP NO. B-1182

5811-B-18 JAN 27 1952 CIVIL ENGINEER

SHEET 18 OF 21 SHEETS  
COMPLTY SURVEYORS MAP NO 5-1185



CSB 1182-6  
A2 of A2