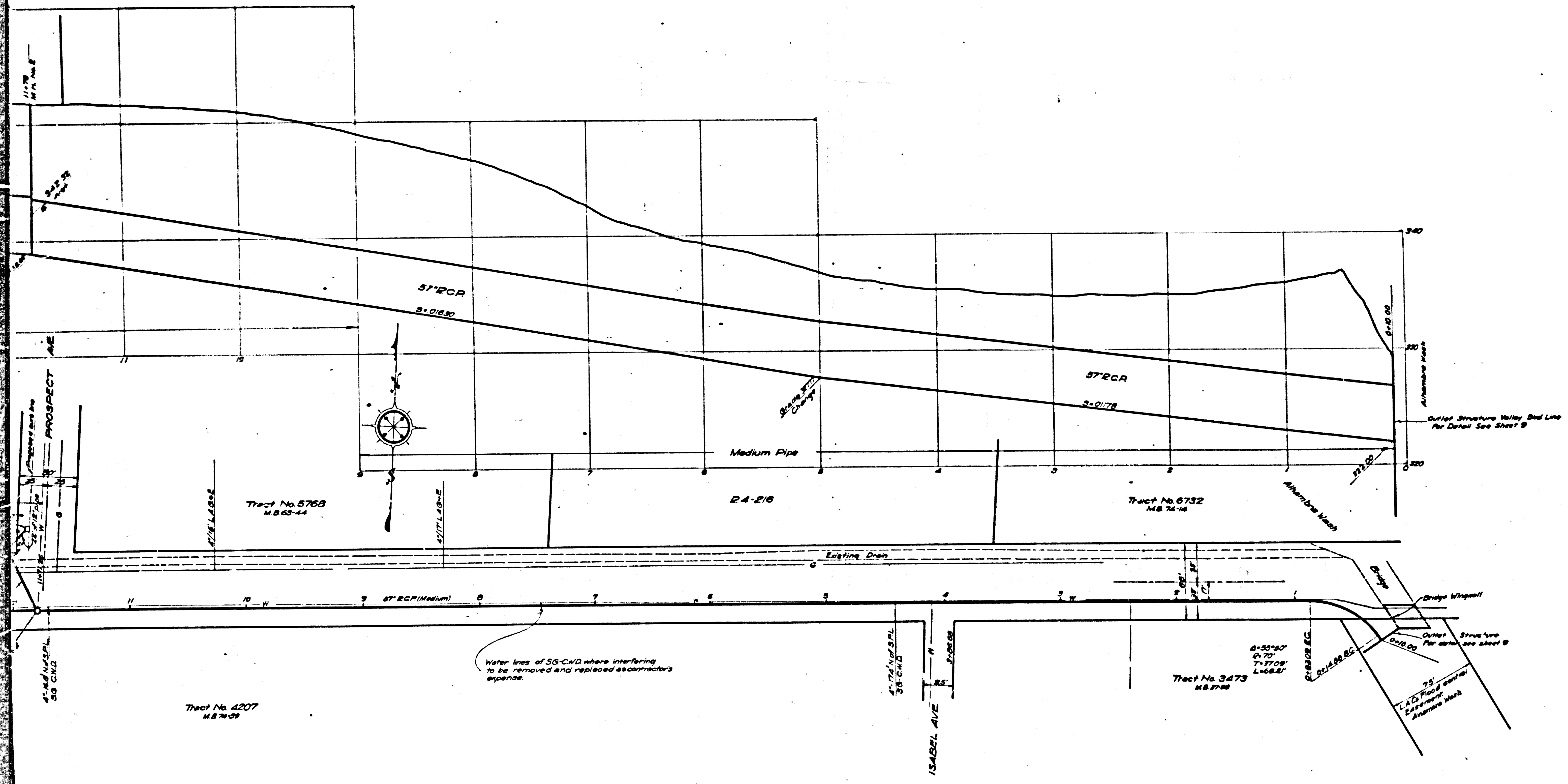


SHEET No. 5 OF 9 SHEETS



-ABANDONED-

**DRAINAGE DISTRICT
IMPROVEMENT NO. 18**

OF THE
COUNTY OF LOS ANGELES
**PLAN AND PROFILE OF
VALLEY BLVD. MAIN LINE**

SCALES: VERTICAL 1"=40'
HORIZONTAL 1"=40'
OCTOBER 1928

SHEET 2 OF 9 SHEETS

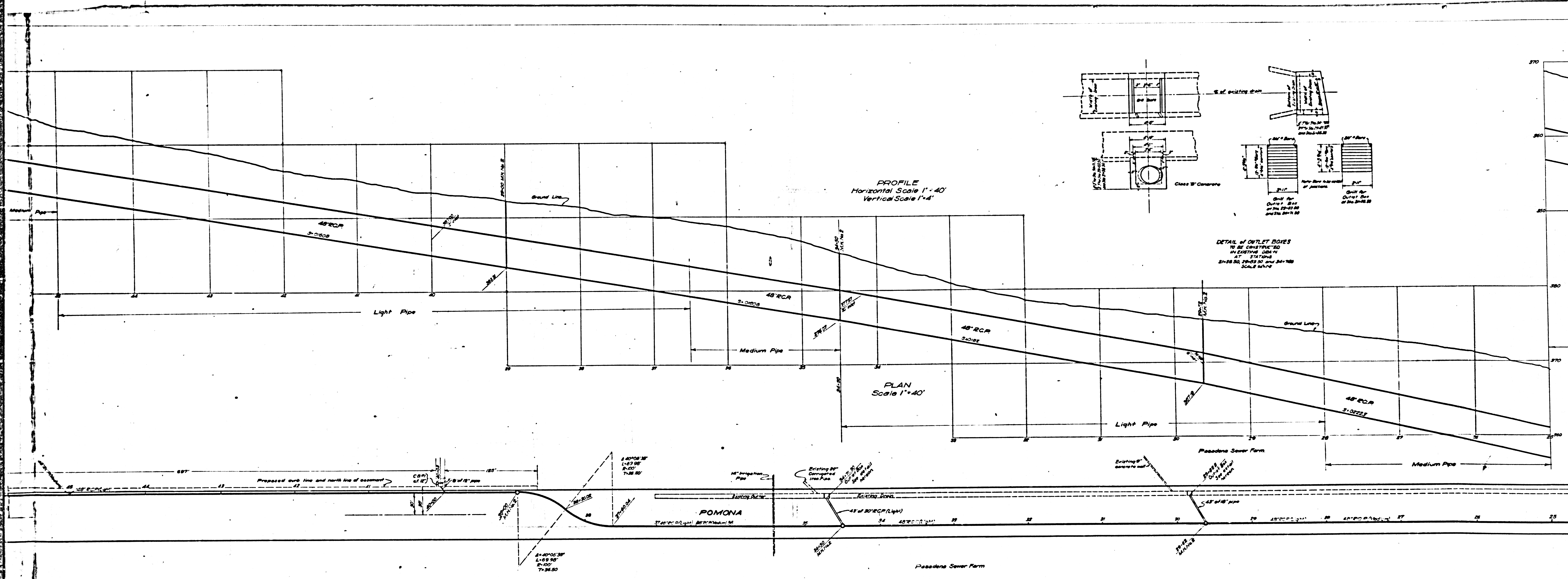
Submitted by J. B. CHOLD - COUNTY SURVEYOR
Approved by Everett W. Mattoon - COUNTY COUNSEL
by Deputy
by Deputy

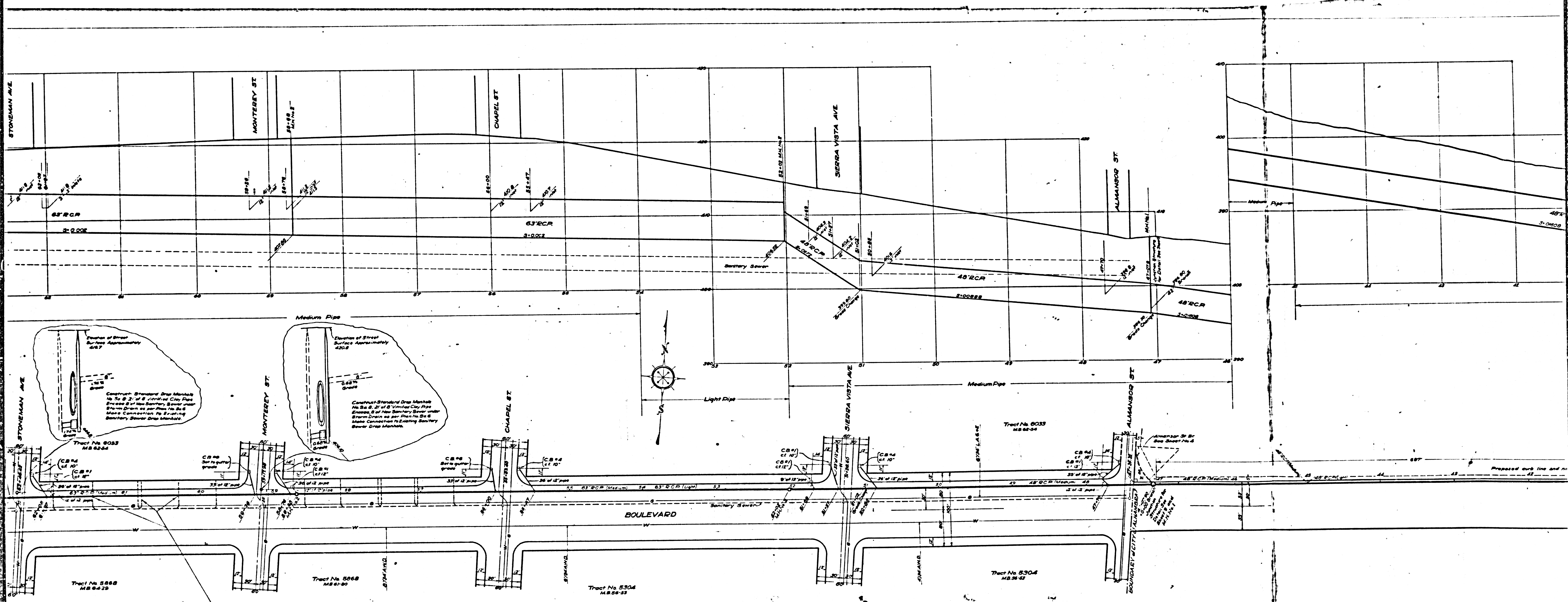
Note: All pipe not otherwise specified shall be plain cement pipe.
Note: Elevations are in feet above U.S.G.S. or Mean Sea Level Datum.

| | | |
|-----------|----------|------------|
| REVISIONS | DATE | BY |
| 1 | 10-28-28 | J.B. CHOLD |
| 2 | 11-1-28 | |
| 3 | 11-1-28 | |

CSB 1185-2
A1 of A5

SHEET No. 5 OF 9 SHEETS

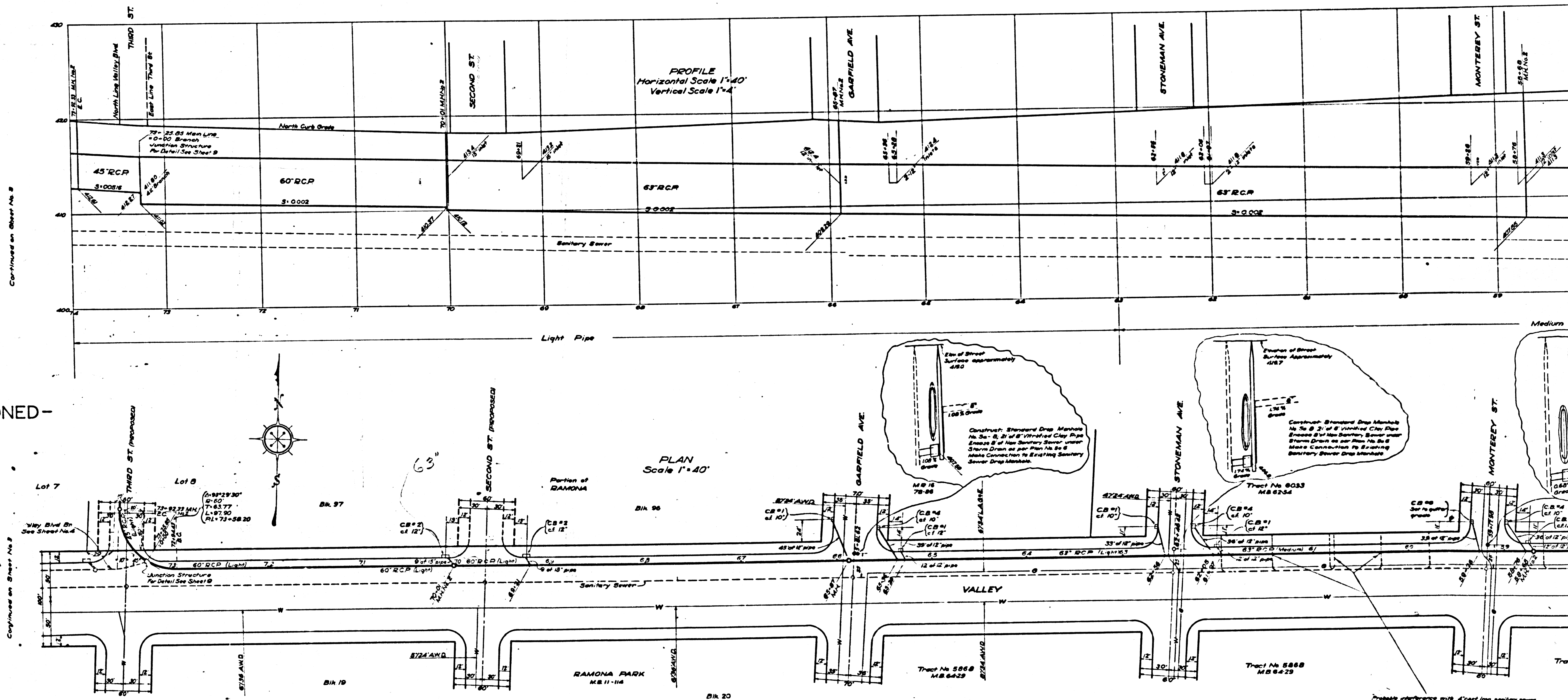




Continued on Sheet No. 9

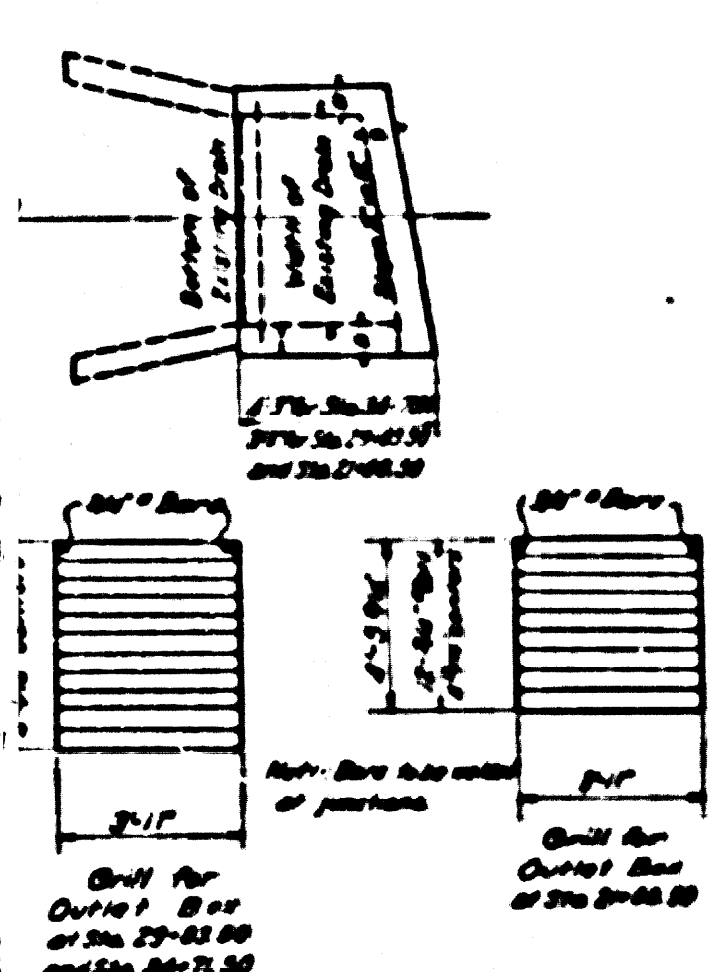
SHEET No. 5 of 9 SHEETS

-ABANDONED-



Probable interference with 4" cast iron sanitary sewer lines shown. These to be removed at contractor expense and to the satisfaction of the Engineer of construction.

CSB 1185-2
A5 of A5



ST BOXES
 PAVED
 OPEN
 1" DIA. 24" HIG.
 1" DIA. 24" HIG.

