

- ABANDONED -

### DRAINAGE DISTRICT IMPROVEMENT NO. 18

OF THE  
COUNTY OF LOS ANGELES  
**PLAN AND PROFILE OF  
RAMONA BLVD. MAIN LINE**

SCALES VERTICAL 1"=4' HORIZONTAL 1"=40' OCTOBER 1926

**SHEET 7 OF 9 SHEETS**

Submitted by \_\_\_\_\_ Approved by \_\_\_\_\_  
Chief Deputy County Surveyor

Approved by \_\_\_\_\_  
County Council

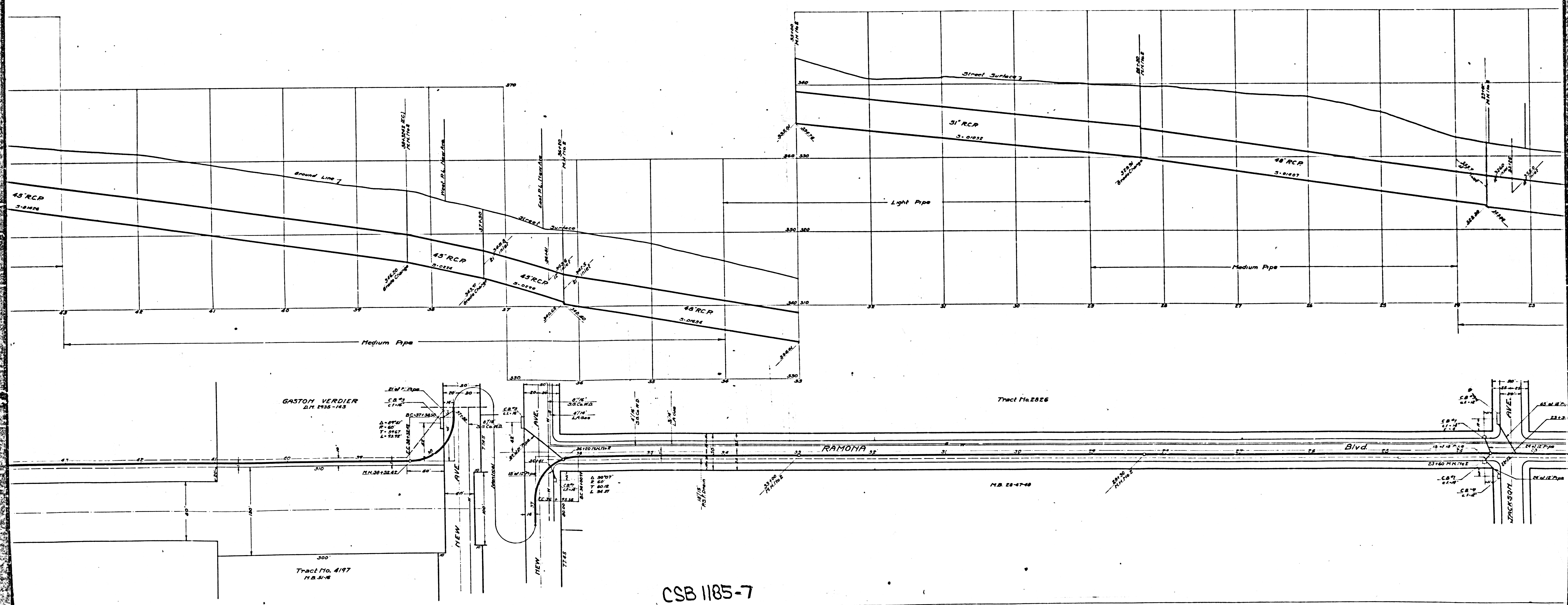
by \_\_\_\_\_ Deputy

Note: Elevations are in feet above U.S.G.S. or mean sea level datum.

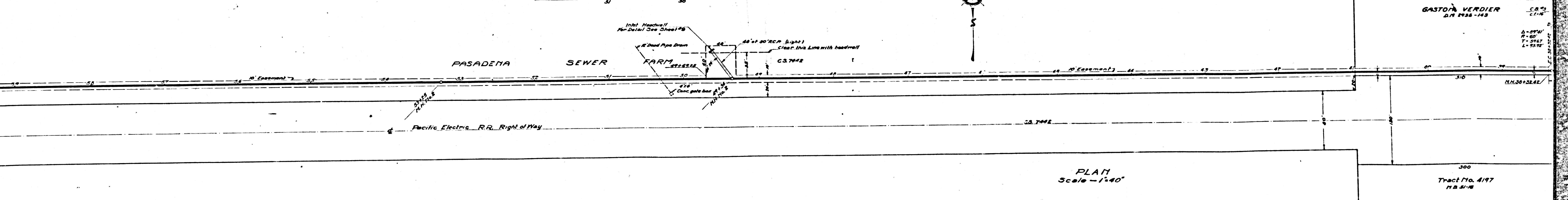
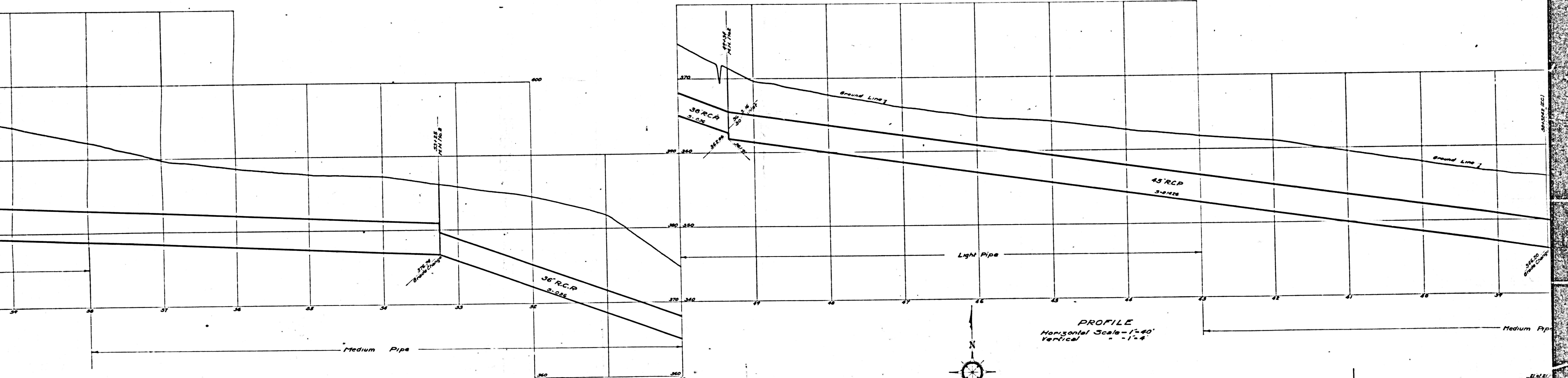
Note: All pipe not otherwise specified shall be plain cement pipe.

References	Designed by	Checked by
L.B. 290	Gregory	Friend
	Traced by	Hurock

CSB 1185-7  
A1 of A5



CSB 1185-7  
A3 & A5

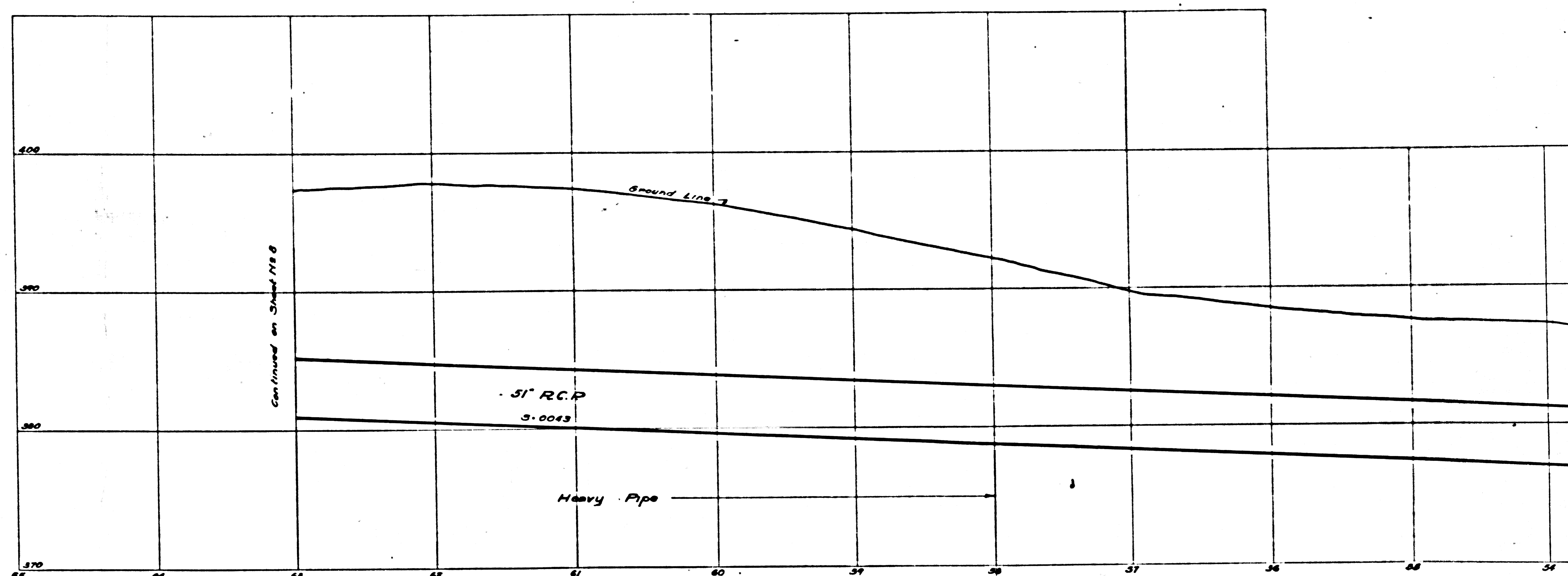


GASTON VERDIER  
 D.R. 1938-143  
 C.B. 11-16  
 Δ-0.000'  
 T-0.000'  
 L-0.000'

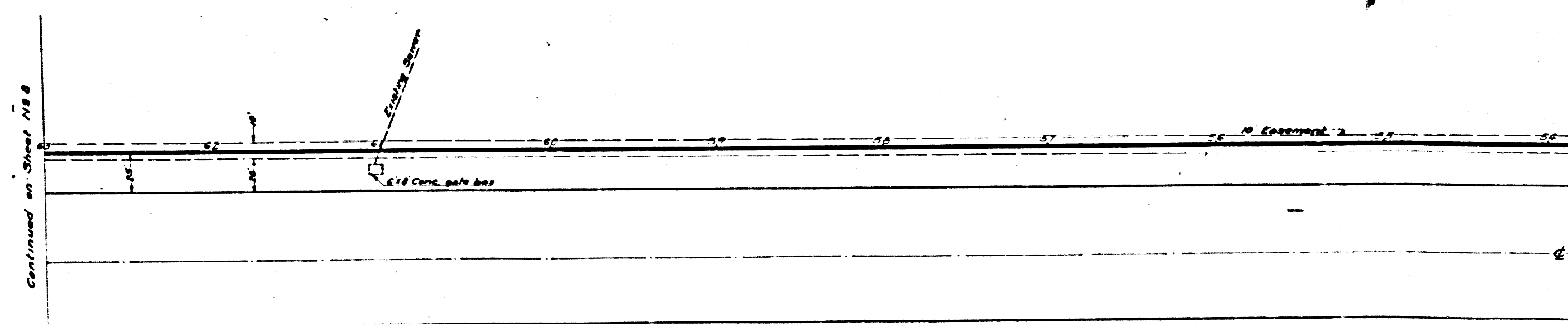
300  
 Tract No. 4197  
 H.B. 8-16

CSB1185-7  
 A4 of A5

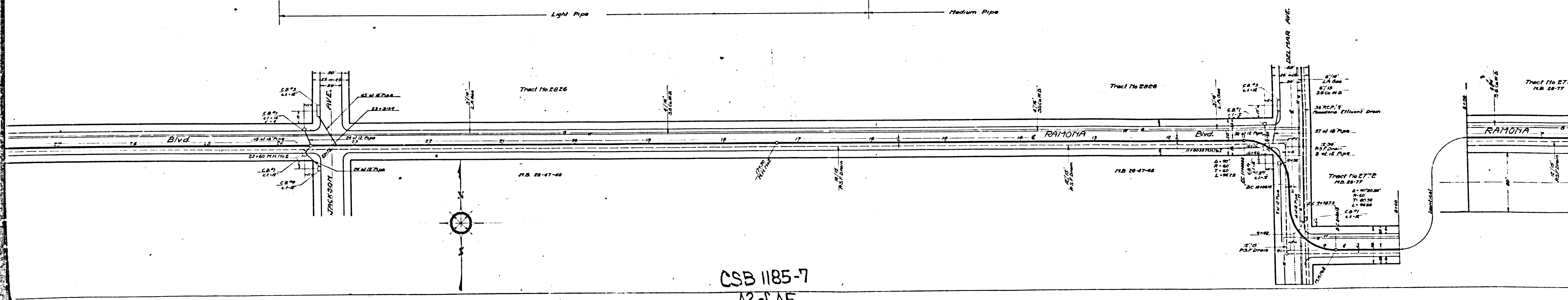
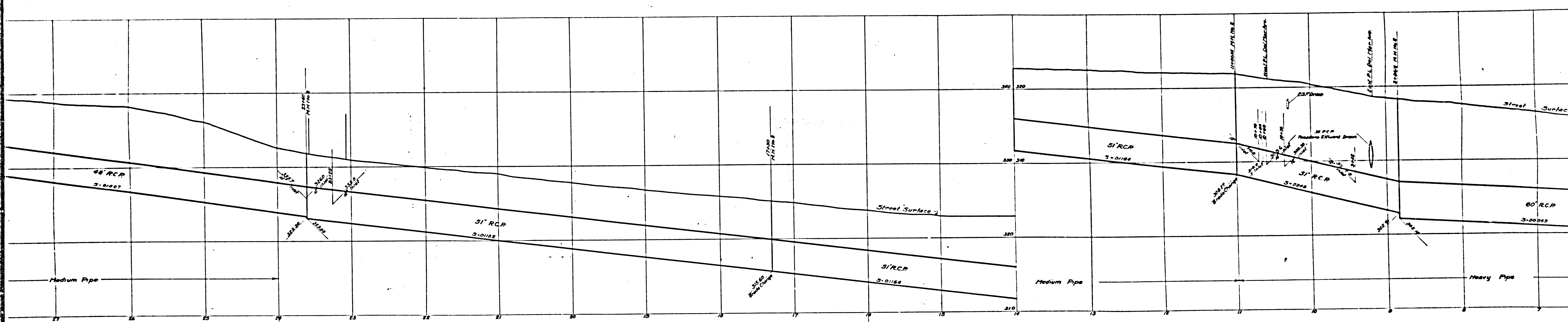
CSB 1185-7  
SHEET No. 1 of 2  
PROPOSED  
CONDUIT



-ABANDONED-



CSB 1185-7  
A5 of A5



CSB 1185-7  
A2 of A5