

-ABANDONED-

DRAINAGE DISTRICT IMPROVEMENT NO. 18

OF THE
COUNTY OF LOS ANGELES
PLAN AND PROFILE OF
RAMONA BLVD. MAIN LINE
SCALES VERTICAL 1"=40'
HORIZONTAL 1"=40' OCTOBER 1926

SHEET 8 OF 9 SHEETS
J.E. ROCKWOLD COUNTY SURVEYOR
Approved
Submitted _____ Chief Deputy _____ County Surveyor
Approved as to Form
Ernest W. Mottson
County Counsel
by _____ Deputy

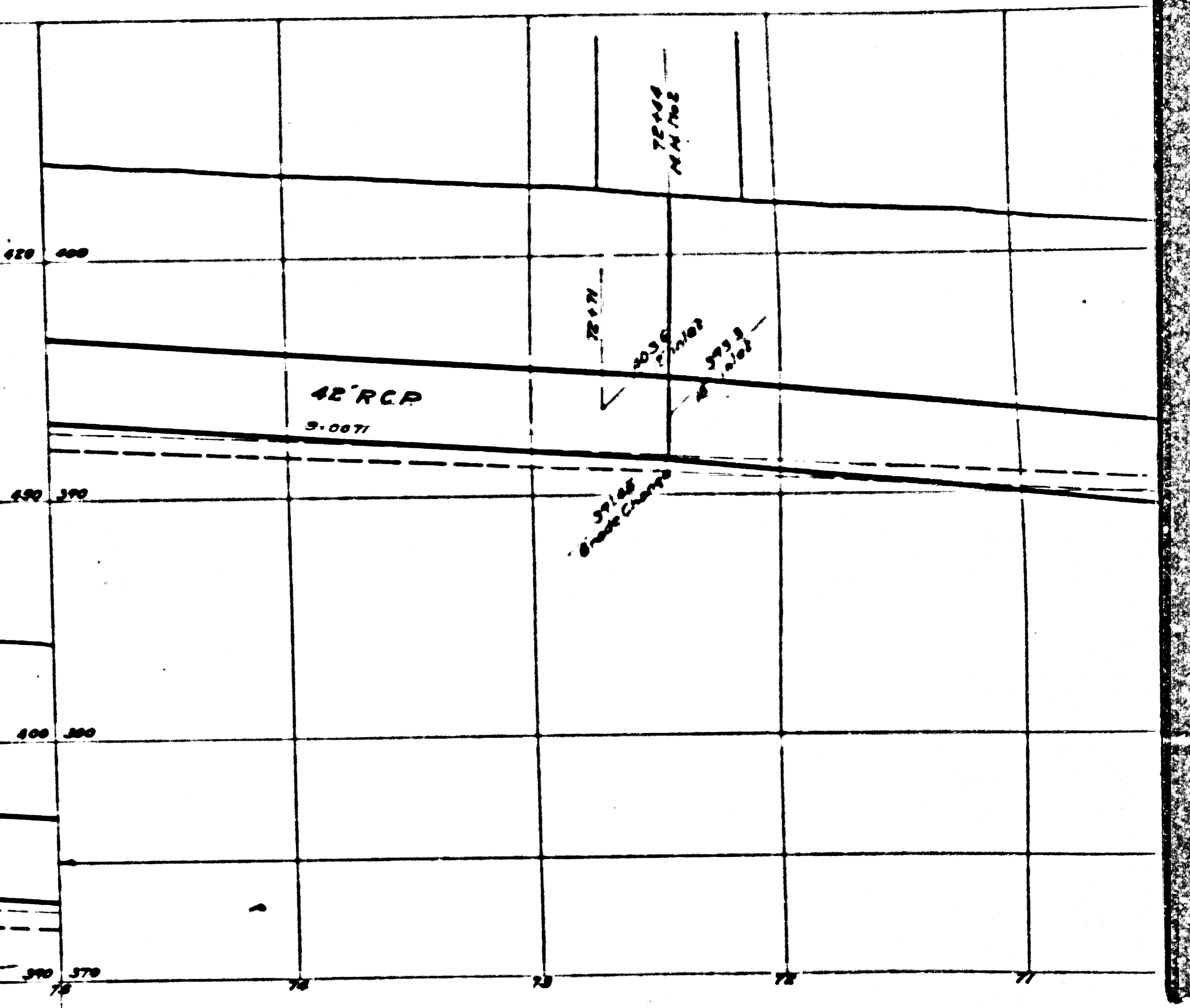
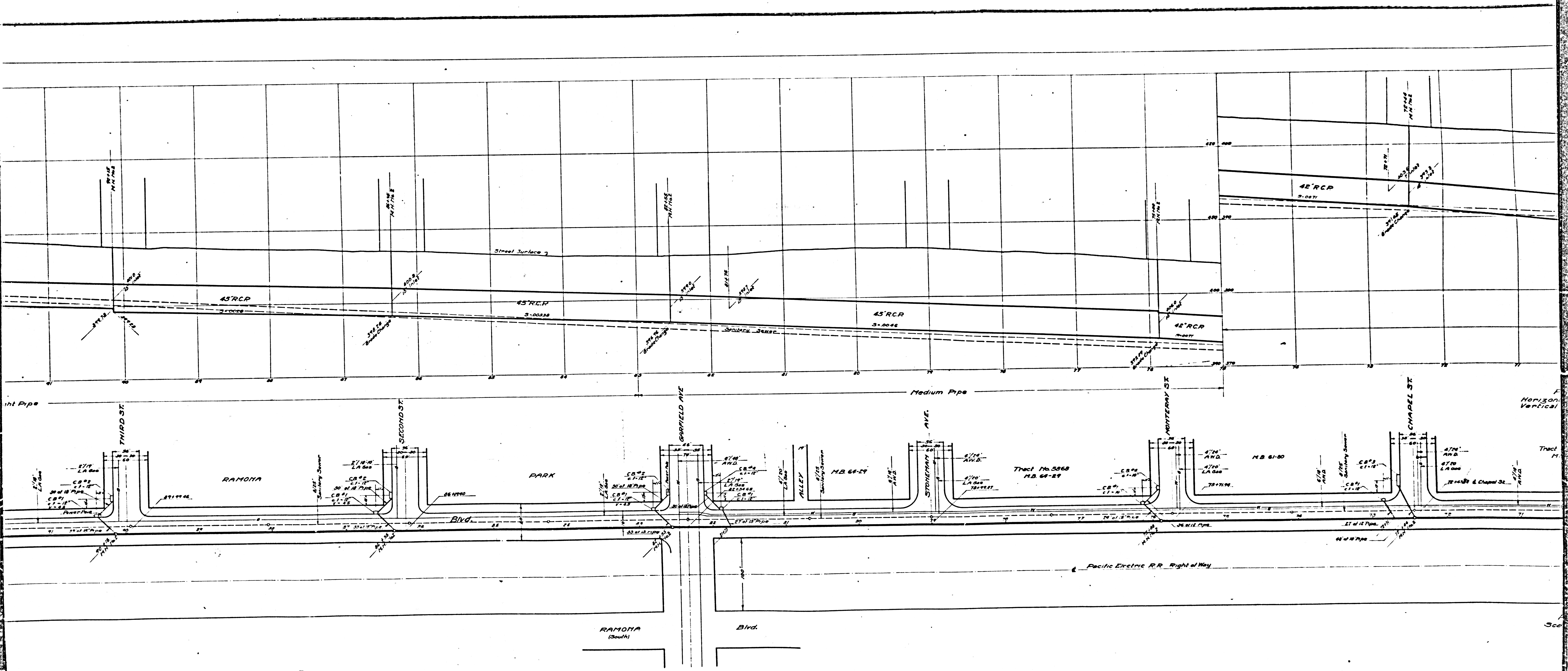
Note: Elevations are in feet above U.S.S. or mean sea level datum.
Note: All pipe not otherwise specified shall be plain cement pipe.

References		
L.B. 290	Designed by	Gregory
	Traced by	Hunlock
	Checked by	Friend

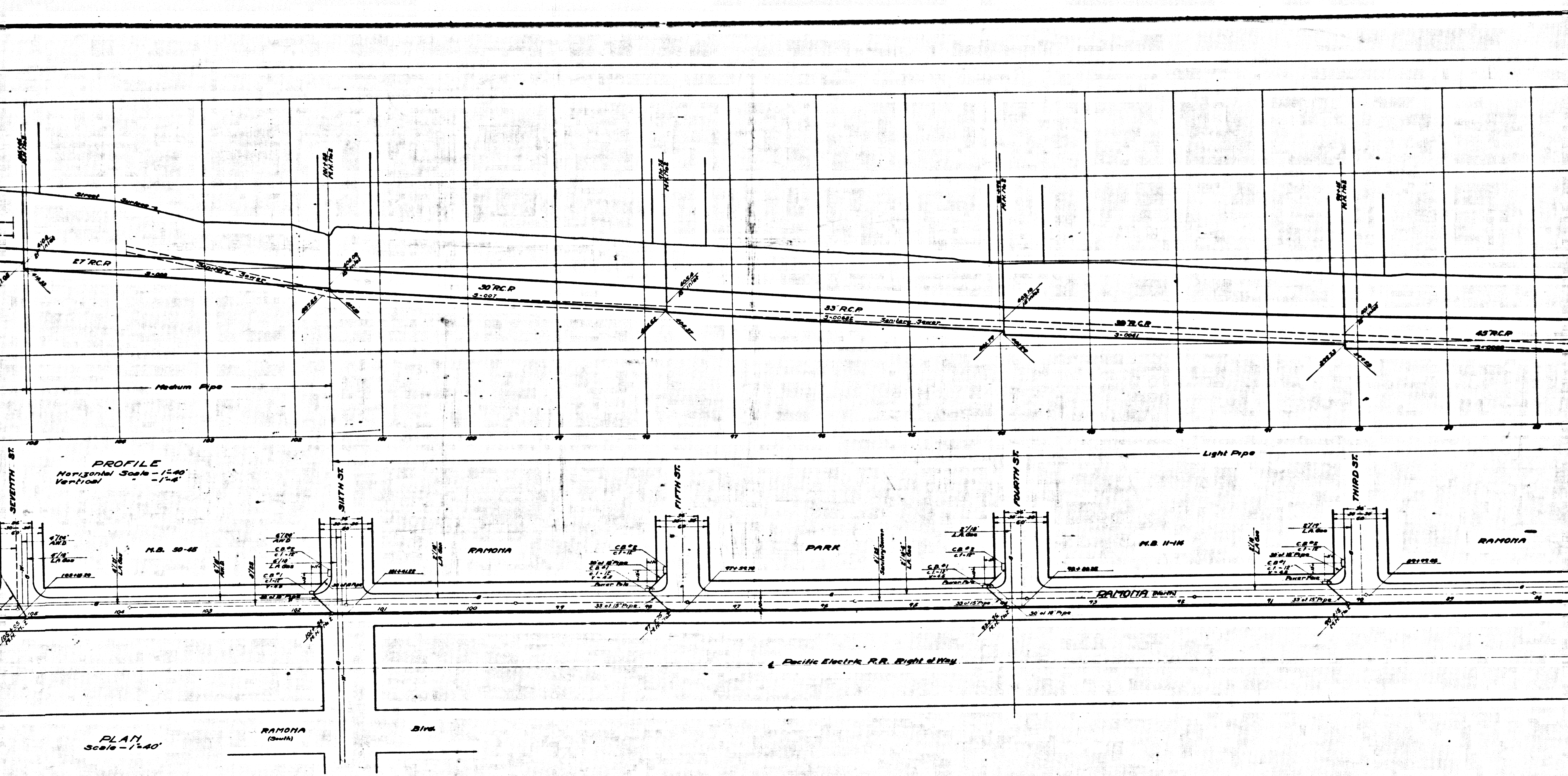
CSB 1185-8
A1 of A4

SHEET No. 8 OF 9 SHEETS
COMPL. 2784E082 MVB No. B-1187

SHEET No. 8 OF 9 SHEETS
COMPL. 2784E082 MVB No. B-1187



CSB 1185-8
A2 & A4

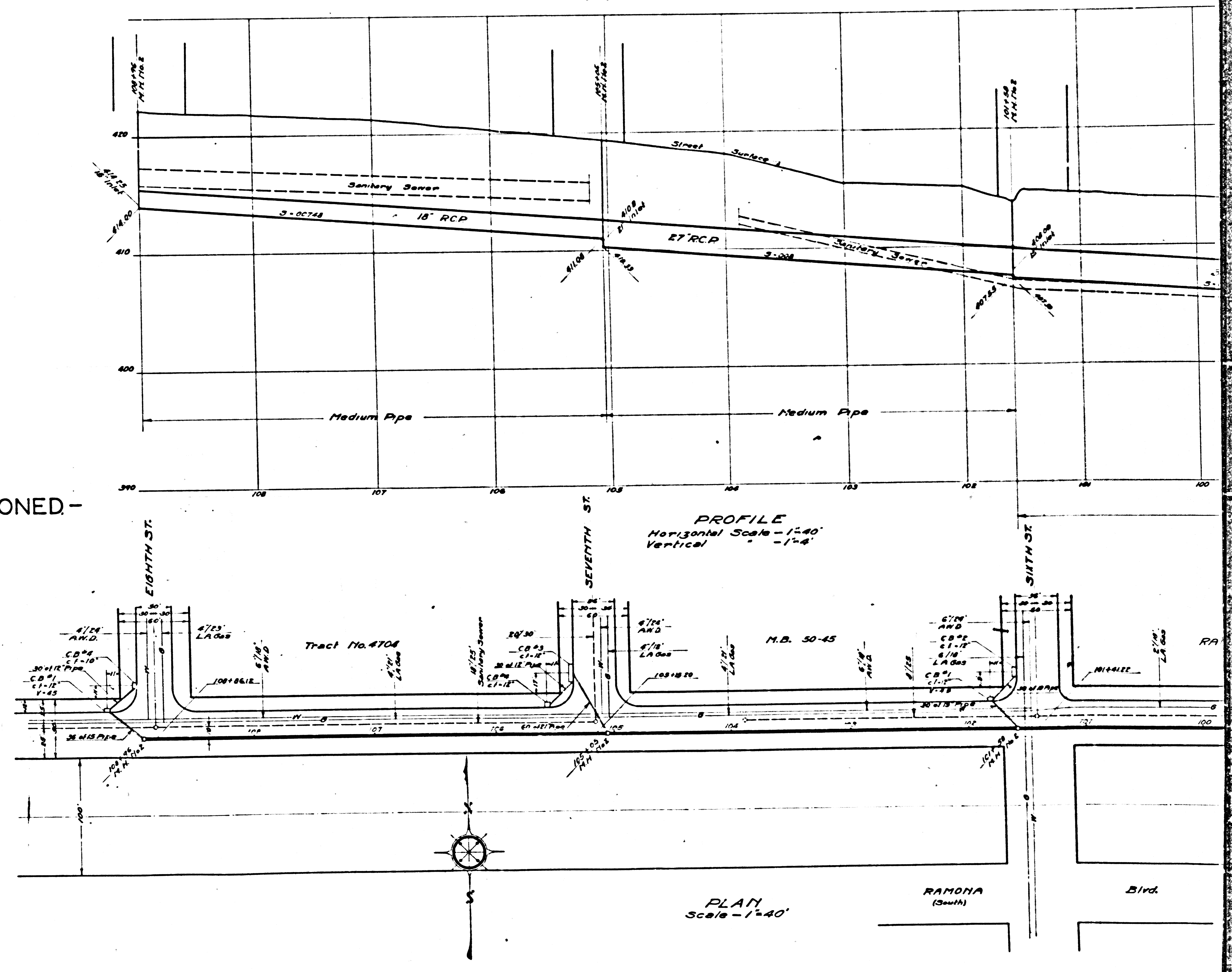


CSB 1185-8

SHEET No 8 OF 8 SHEETS
COMPLA 27346082 MVB Ms B-1182

SHEET No 8 OF 8 SHEETS
COMPLA 27346082 MVB Ms B-1182

-ABANDONED-



CSB 1185-8
A4 of A4