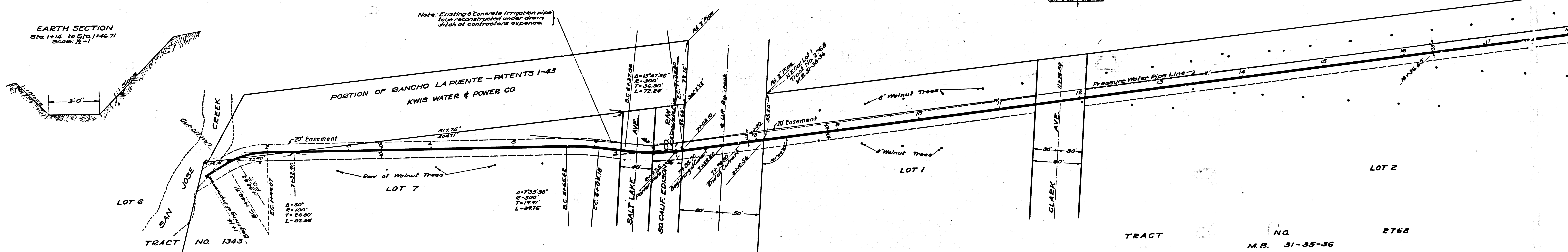
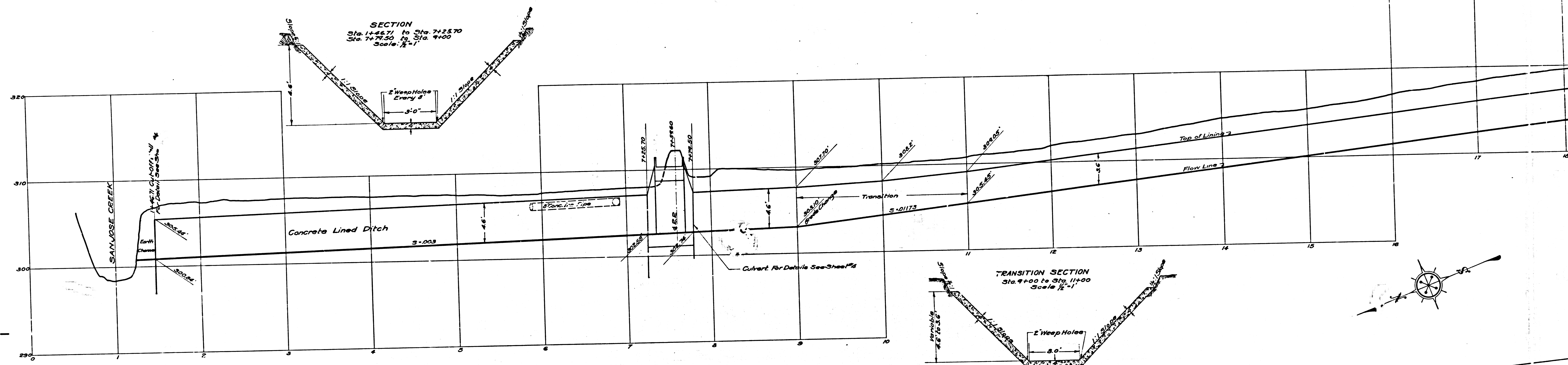


-ABANDONED-



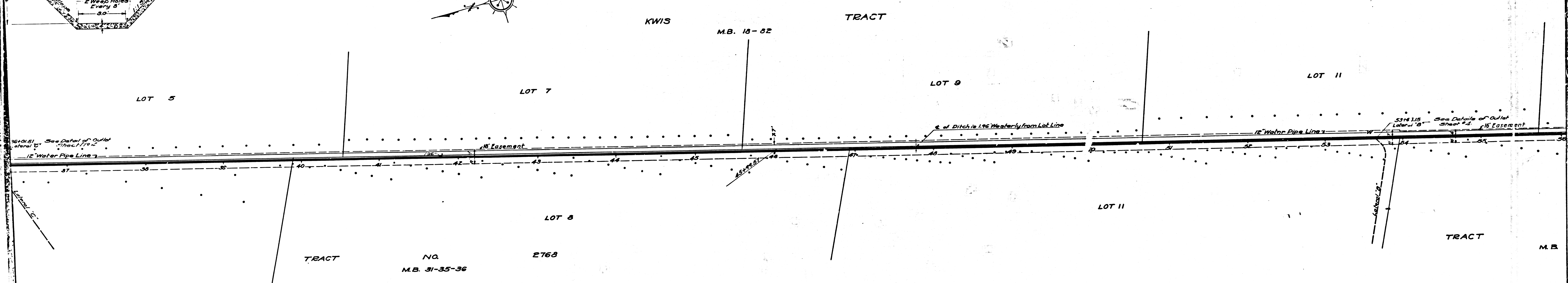
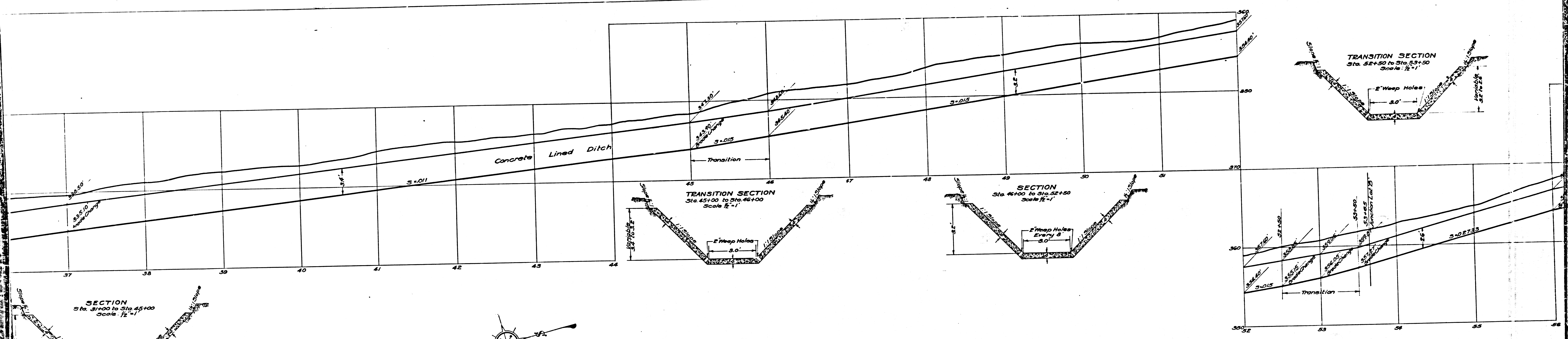
LOT 6
TRACT NO. 1343
M. B. 20-10-11

4'-30"
2'-100"
7'-26.80"
L=92.96

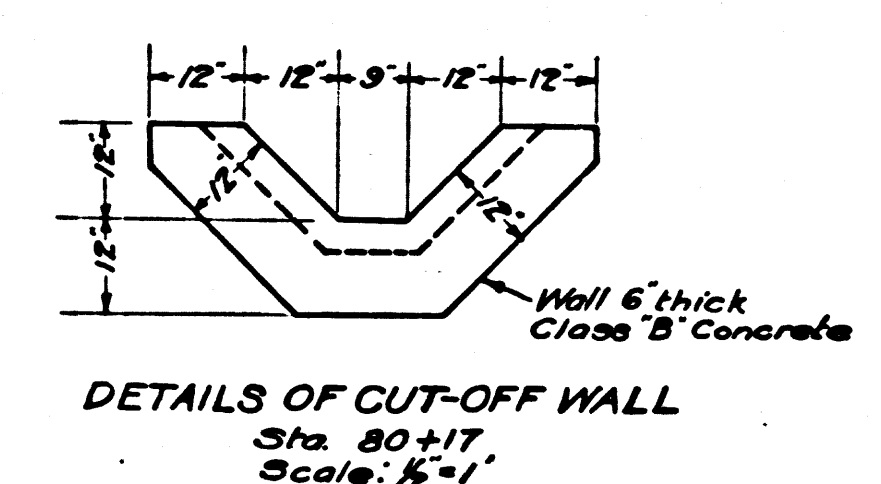
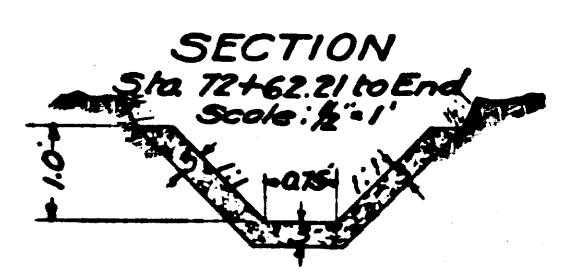
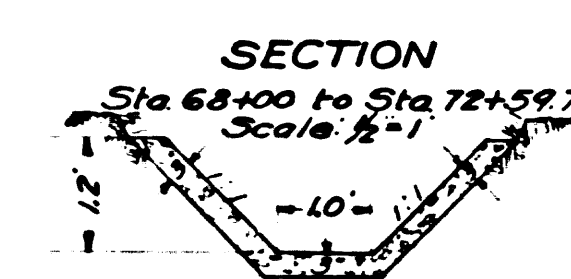
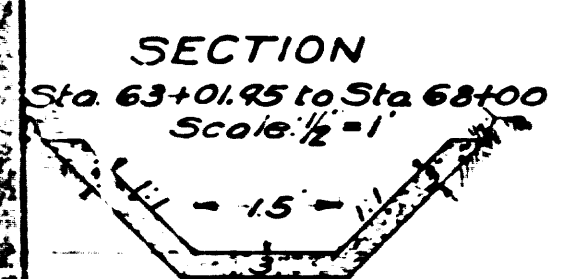
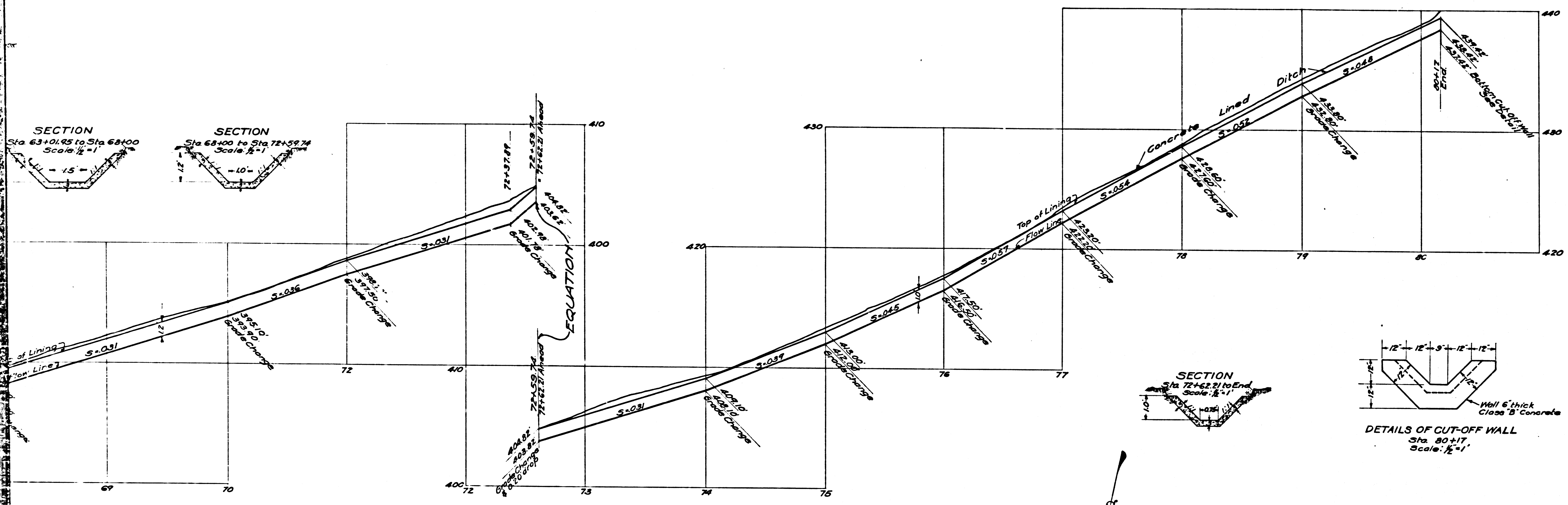
4'-75.36"
2'-300"
7'-19.41"
L=97.6

TRACT NO. 2768
M. B. 31-35-36

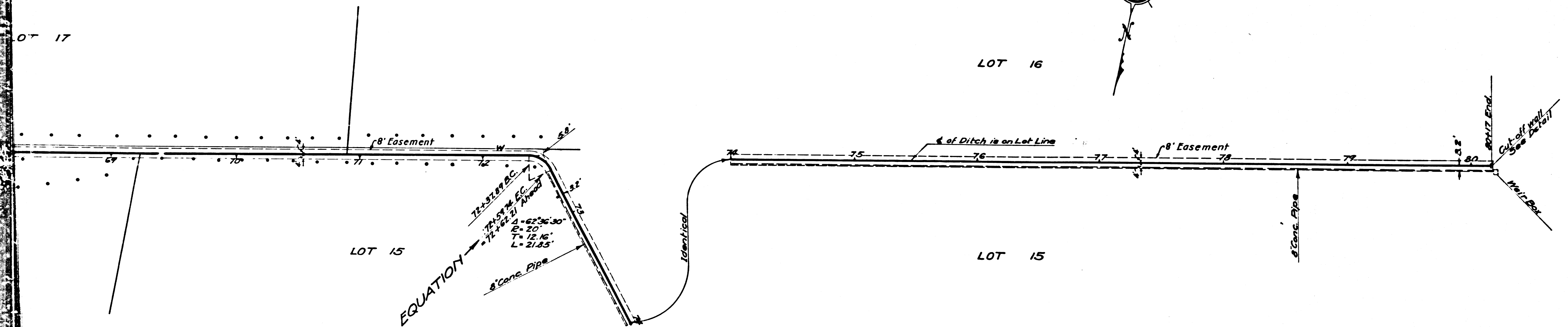
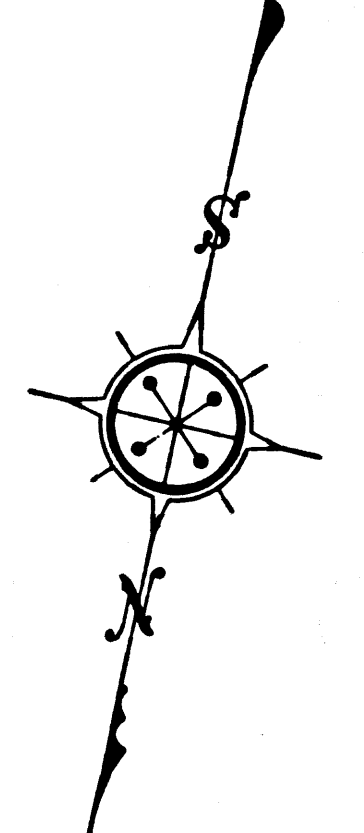
CSB 1186-2
A1 OF A5



CSB 1186-2
A3. OF A5



Note: All Ditch Lining to be of Class "B" Concrete.



Note: All pipe not otherwise specified shall be plain cement pipe.
 Note: Elevations are in feet above U.S.C.S. or Mean Sea Level Datum.

-ABANDONED-
**DRAINAGE DISTRICT
 IMPROVEMENT NO.19**
 OF THE
 COUNTY OF LOS ANGELES
**PLAN AND PROFILE
 OF MAIN LINE**

SCALES (VERTICAL 1"=4'
 HORIZONTAL 1"=40') DECEMBER 1926

SHEET 2 OF 4 SHEETS
 L.F. BOCKHOLD COUNTY SURVEYOR
 Submitted by Alfred Jones Chief Deputy
 Approved by J. P. Rockwell County Surveyor
 Agreed upon to form
 Engineer's Map
 County Counsel
 by J. O. Conroy Deputy

References		
F.B. 259	Designed by	Boatwick
L.B. 304	Traced by	Hunstock
	Checked by	Boatwick

CSB 1186-2
 A5. OF A5

