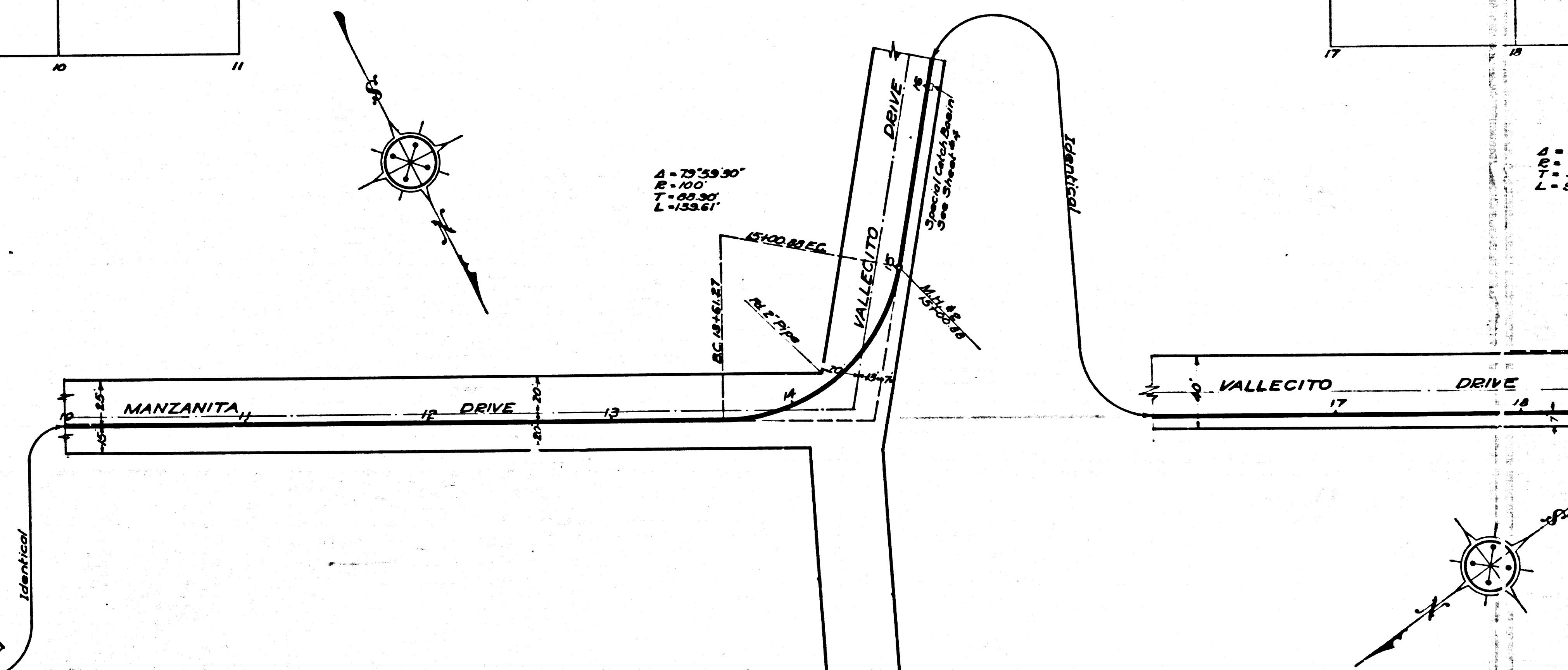
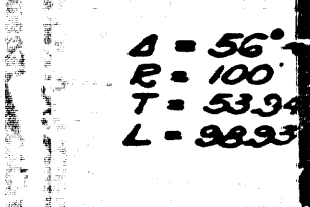
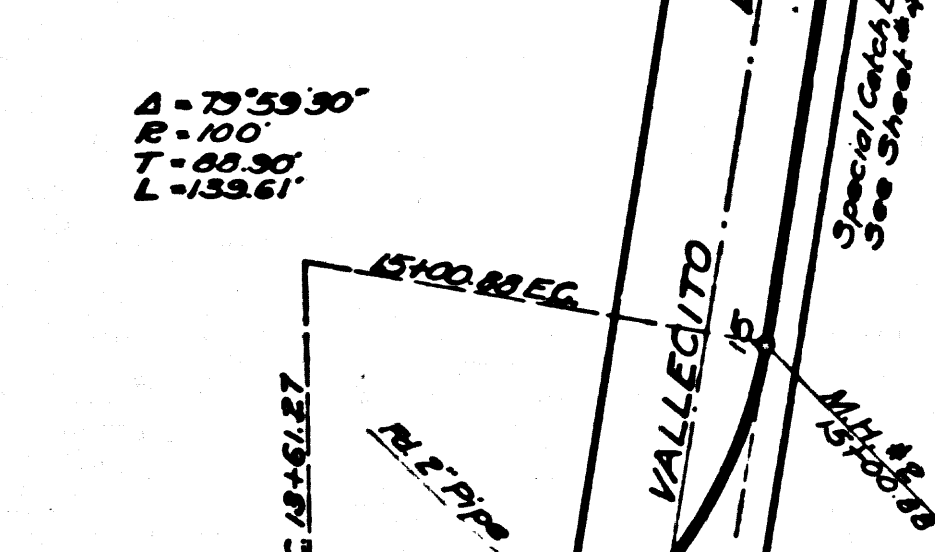
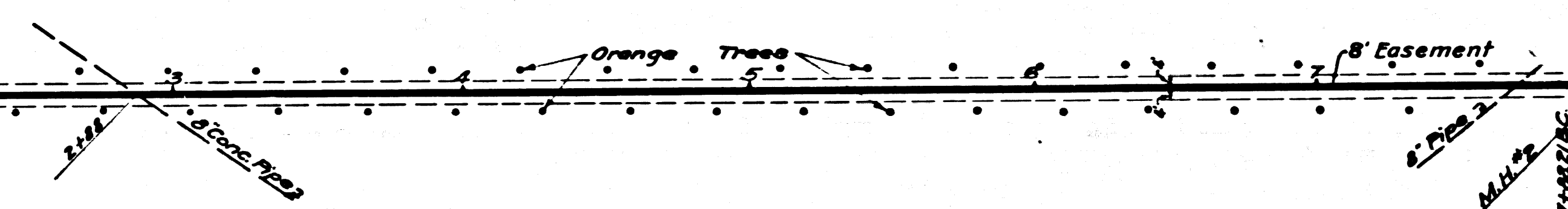
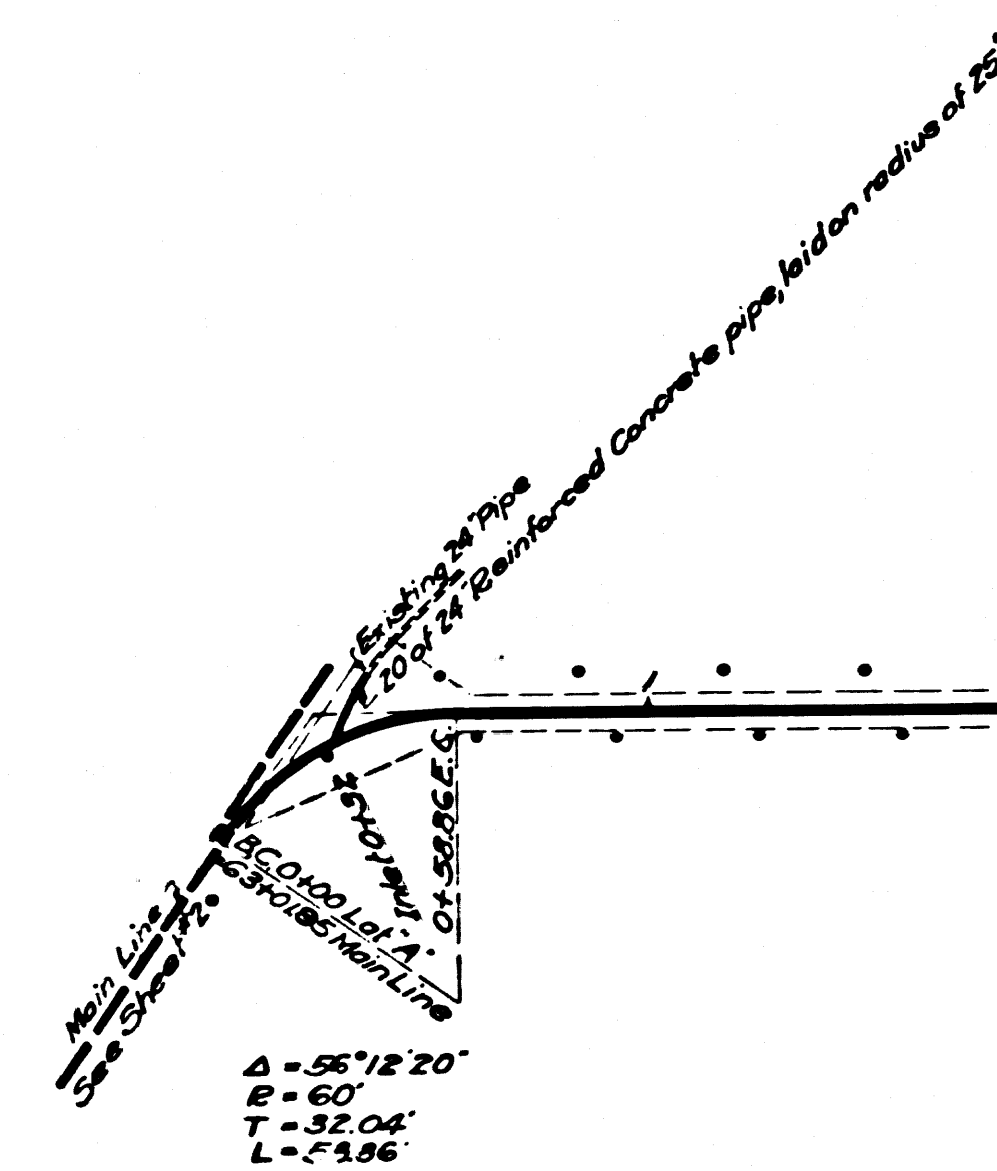
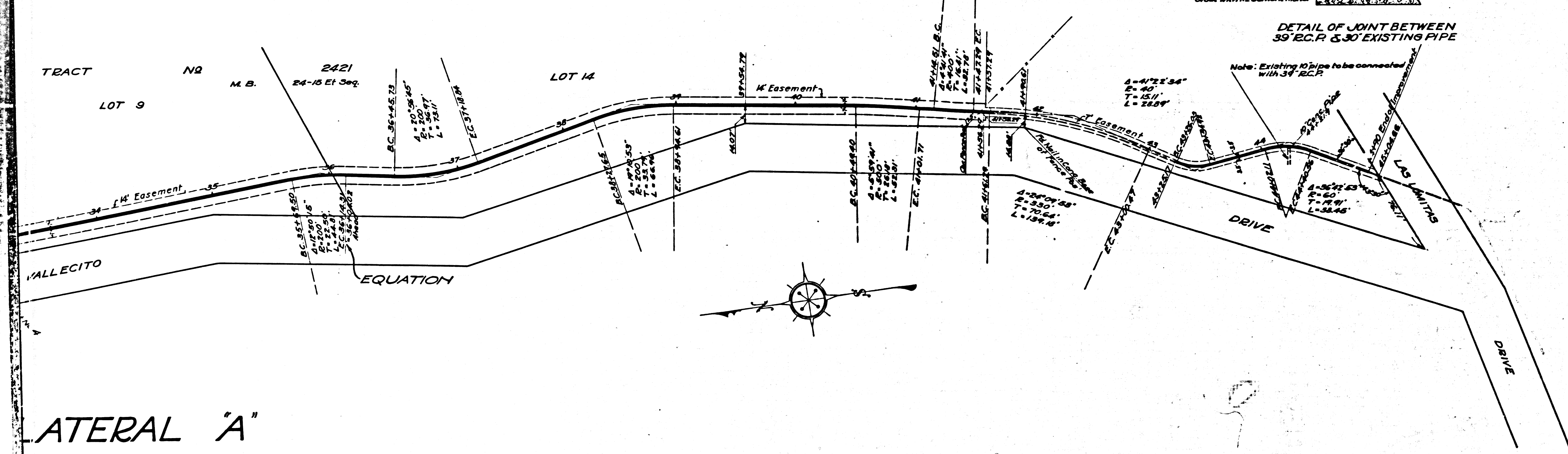
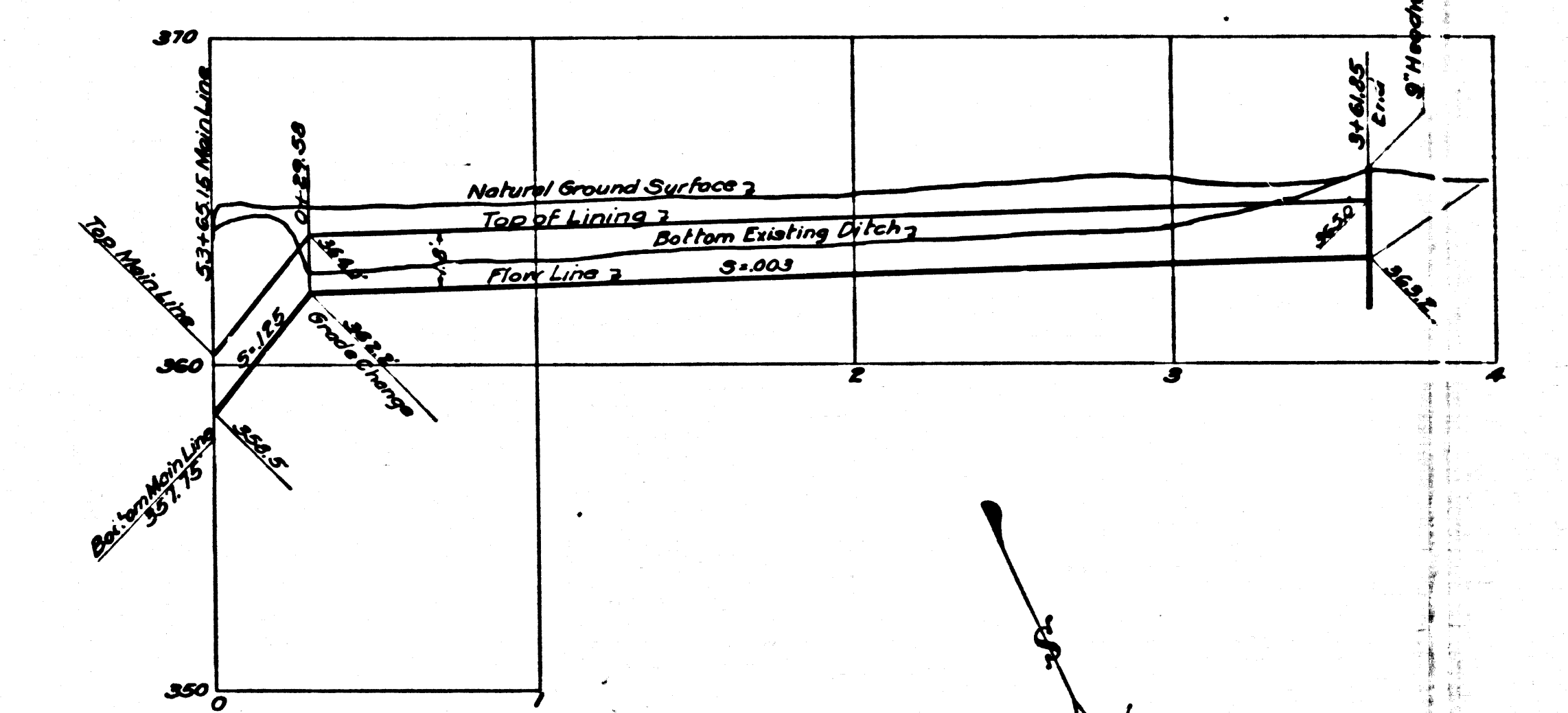
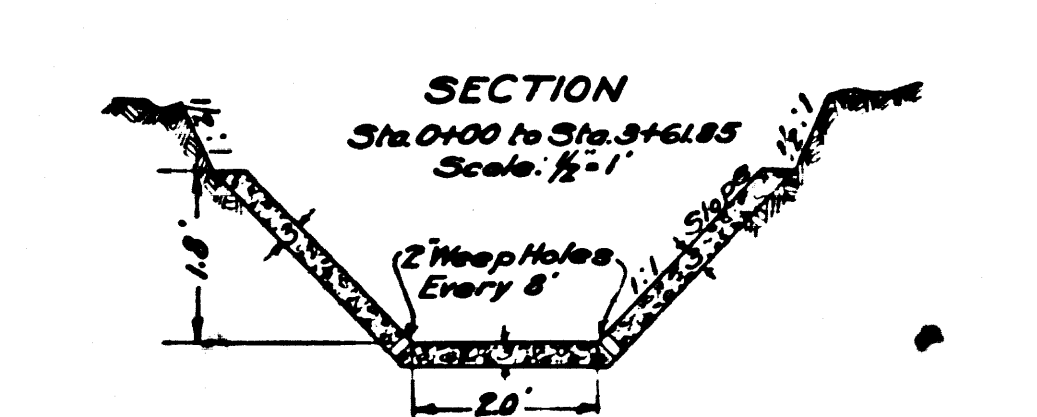
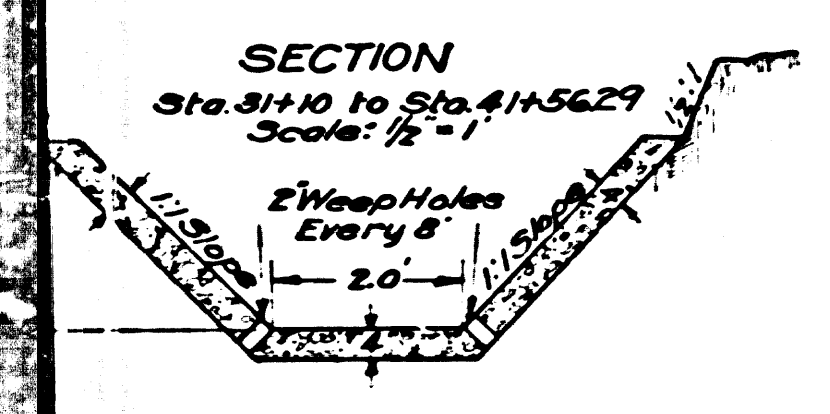
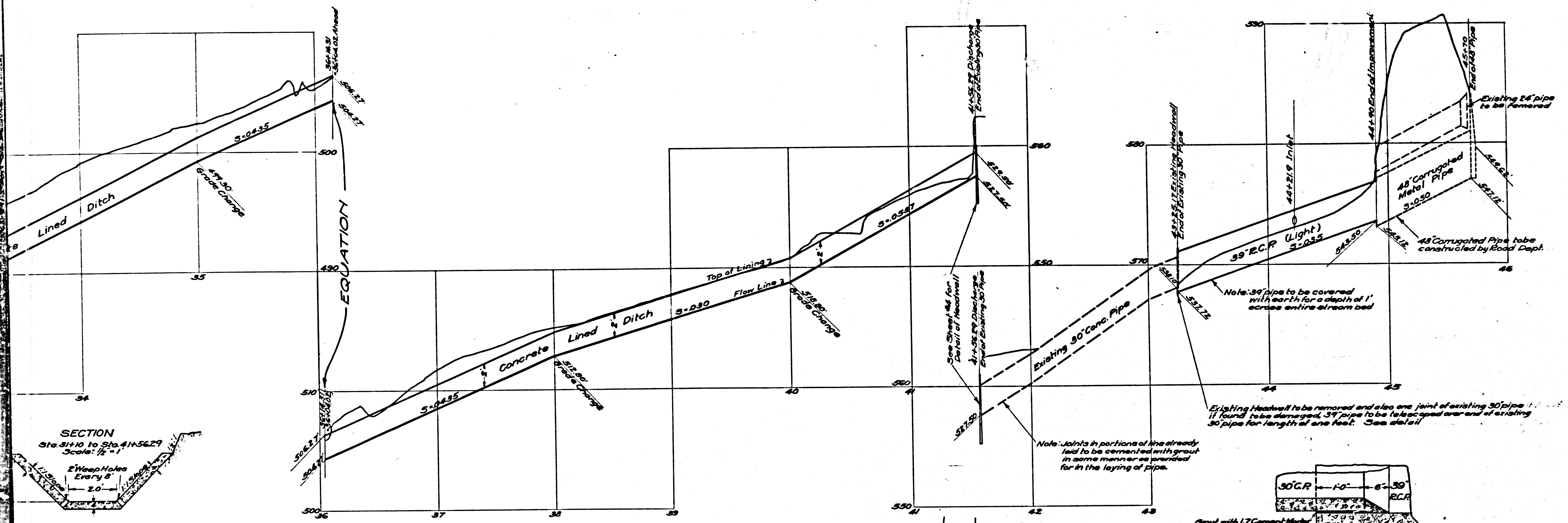


-ABANDONED-



LATERAL 'A'

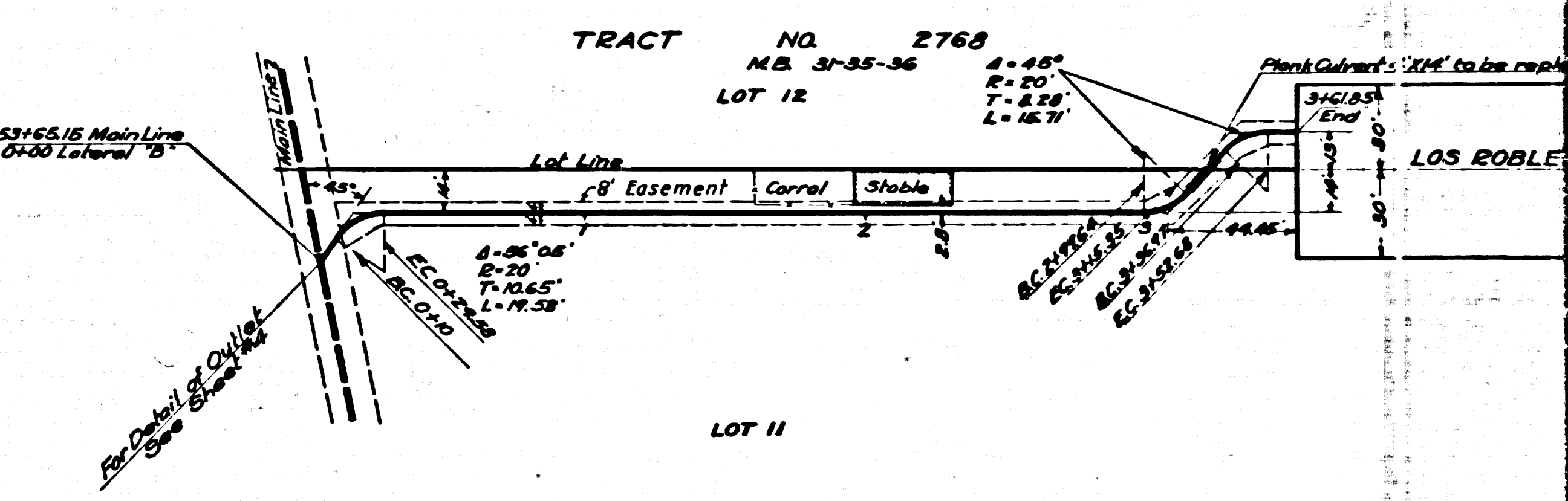
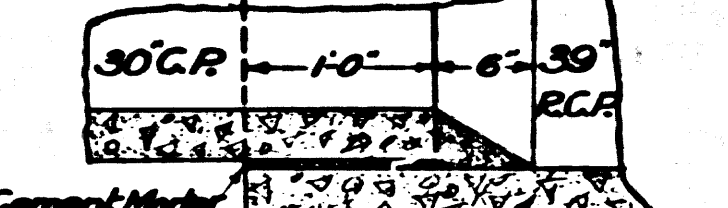
CSB 1186-3  
A1 OF A4



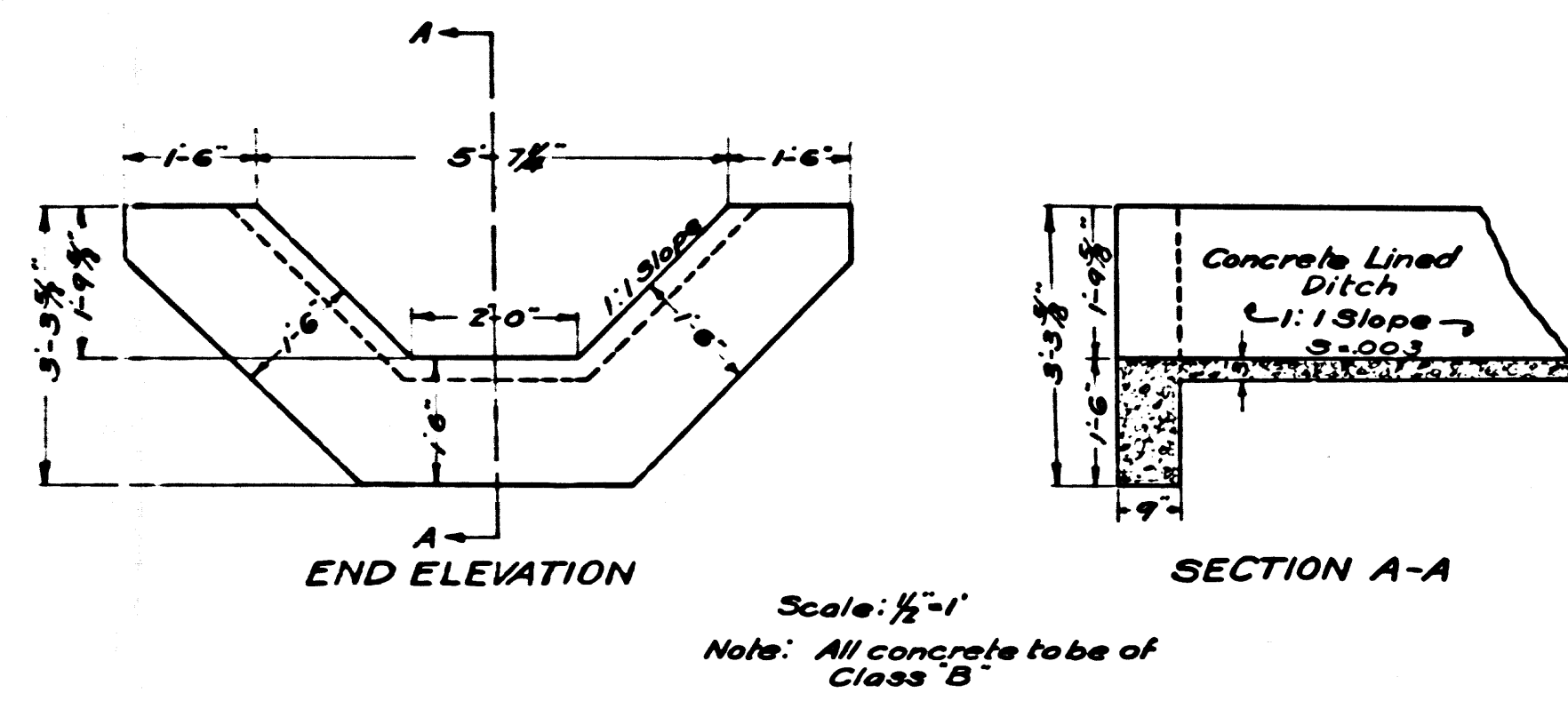
LATERAL 'A'

LATERAL 'B'

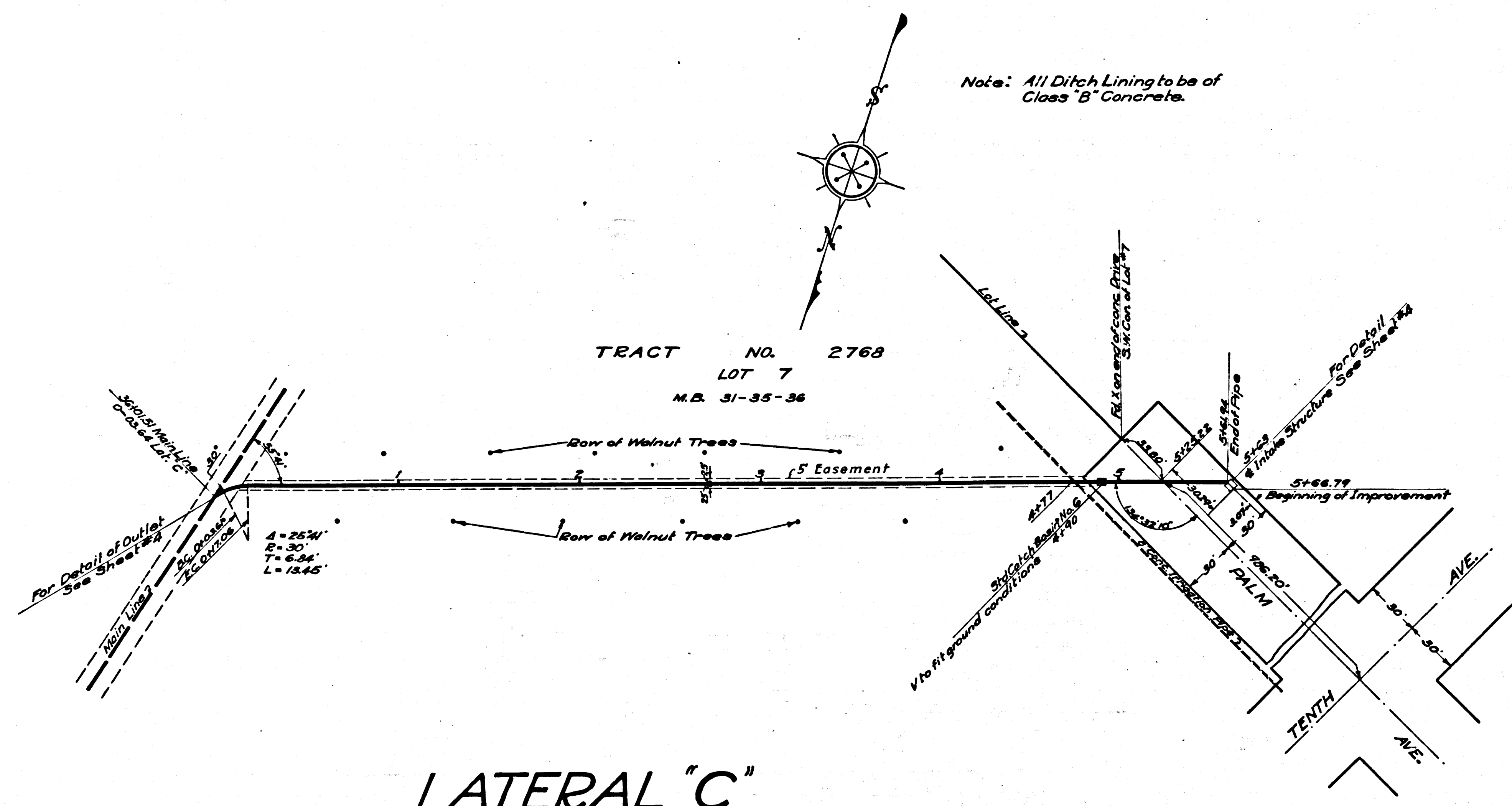
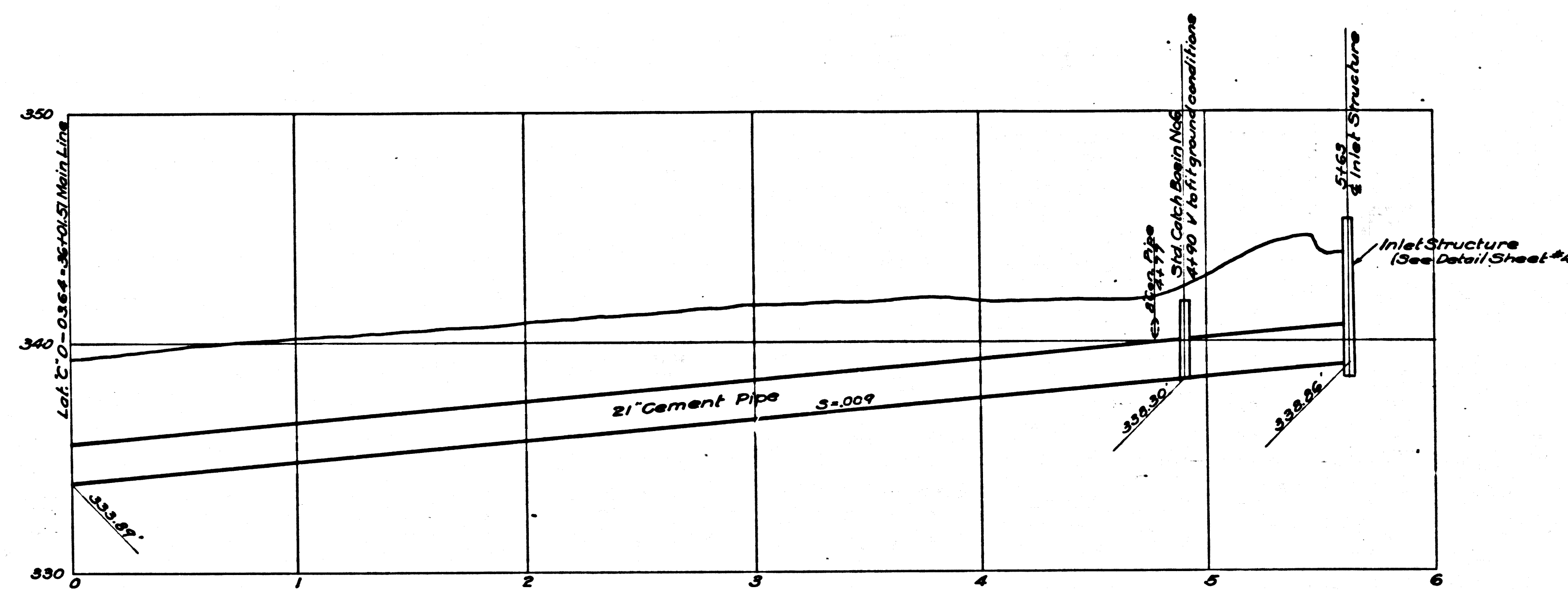
DETAIL OF JOINT BETWEEN 30\"/>



CSB 1186-3  
A3. OF A4



DETAILS OF HEADWALL  
AT  
Sta. 3+61.85 Lot. "B"



LATERAL "C"

-ABANDONED-  
**DRAINAGE DISTRICT  
IMPROVEMENT NO. 19**  
OF THE  
COUNTY OF LOS ANGELES  
PLAN AND PROFILE  
OF LATERALS

SCALES VERTICAL 1"=4'  
HORIZONTAL 1"=20' DECEMBER 1926

SHEET 3 OF 4 SHEETS

J.E. ROCKWOLD-COUNTY SURVEYOR

Submitted by *W.H. Jones* Chief Deputy

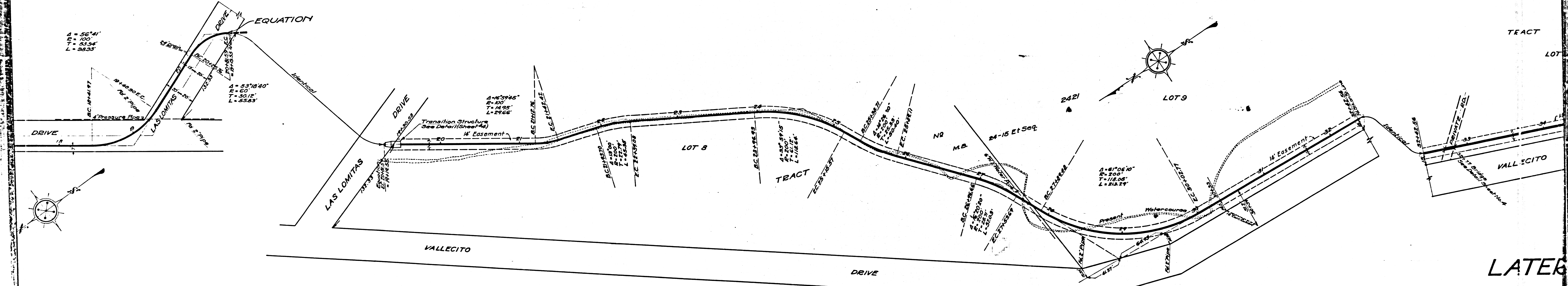
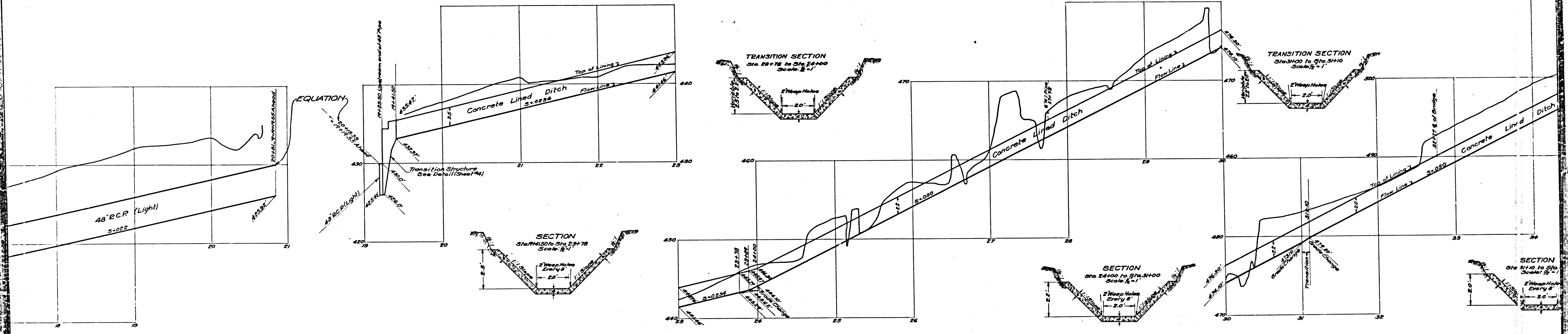
Approved by *J.E. Rockwell* County Surveyor

Approved as to form  
Ernest H. Maltoon  
County Counsel

by *J.W. [Signature]* Deputy

References		
F.B. 229	Designed by	Bostwick
L.B. 304	Traced by	Hunstock
	Checked by	Bostwick

CSB 118 6-3  
A4 OF A4



CSB	118	6-3
A2	OF	A4