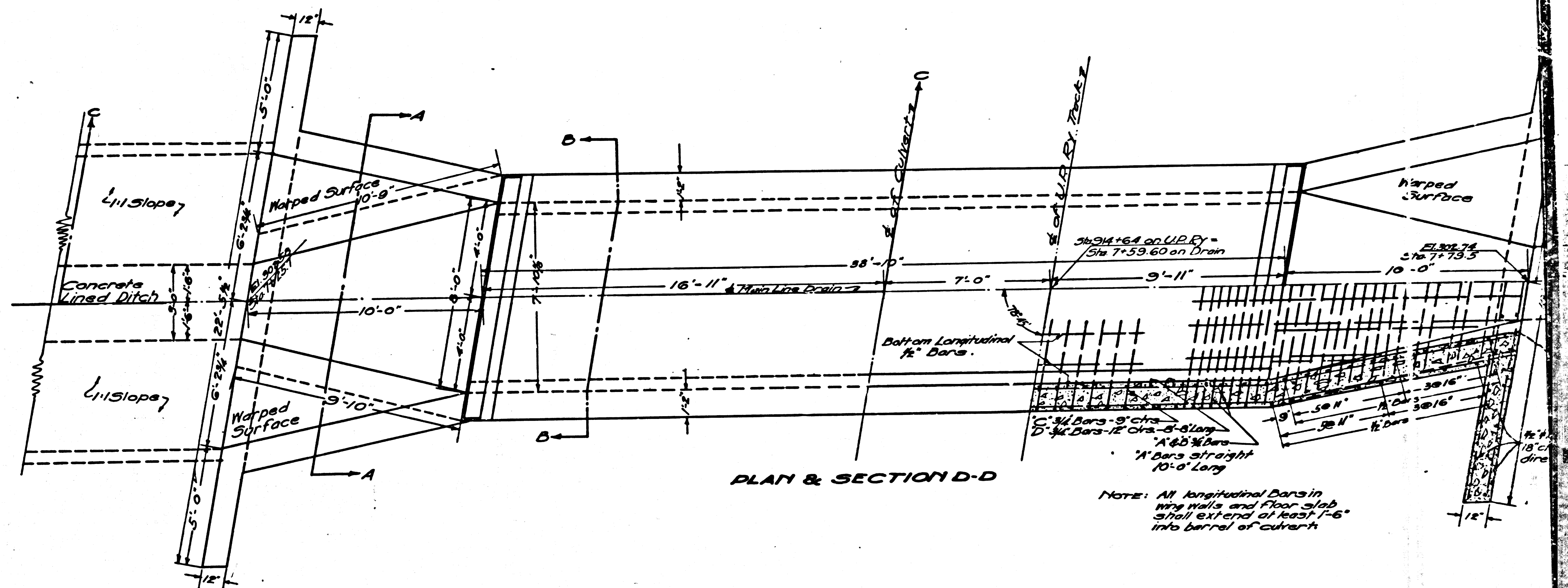


ELEVATION

SECTION A-A

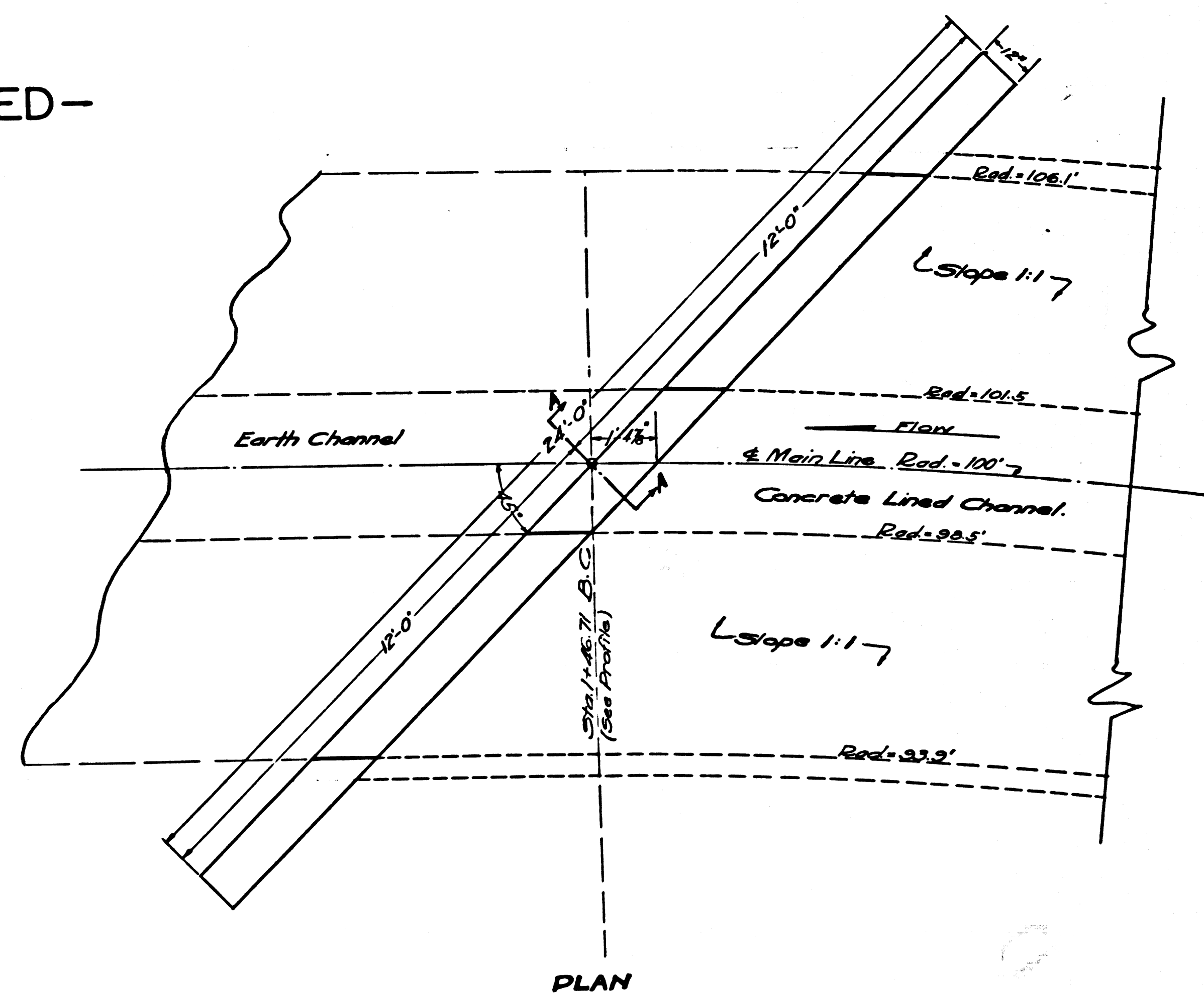
Note: All Concrete to Be Class 'A'



PLAN & SECTION D-D

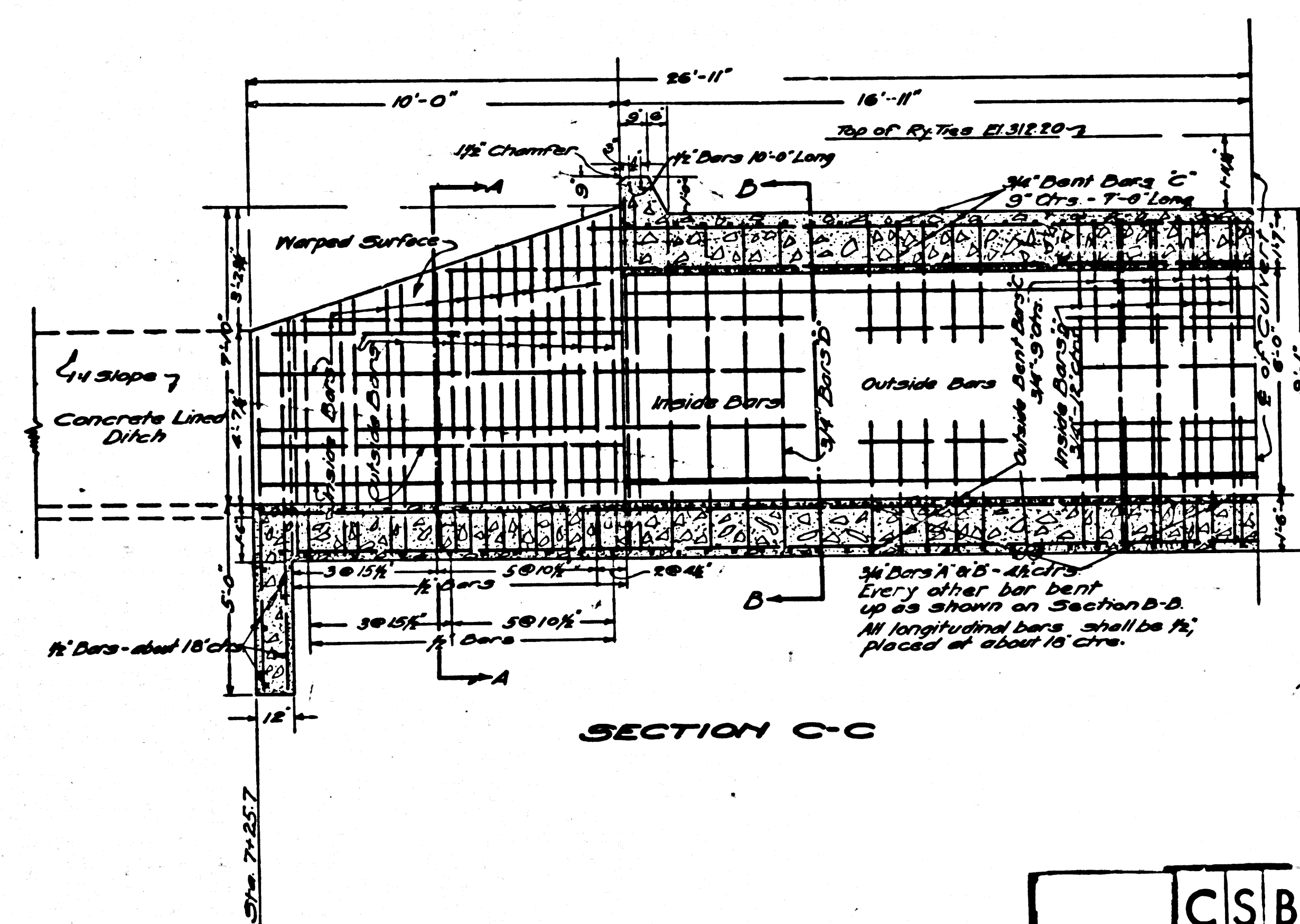
Note: All longitudinal Bars in the walls and floor slab shall extend at least 7'-6" into barrel of culvert

- ABANDONED -

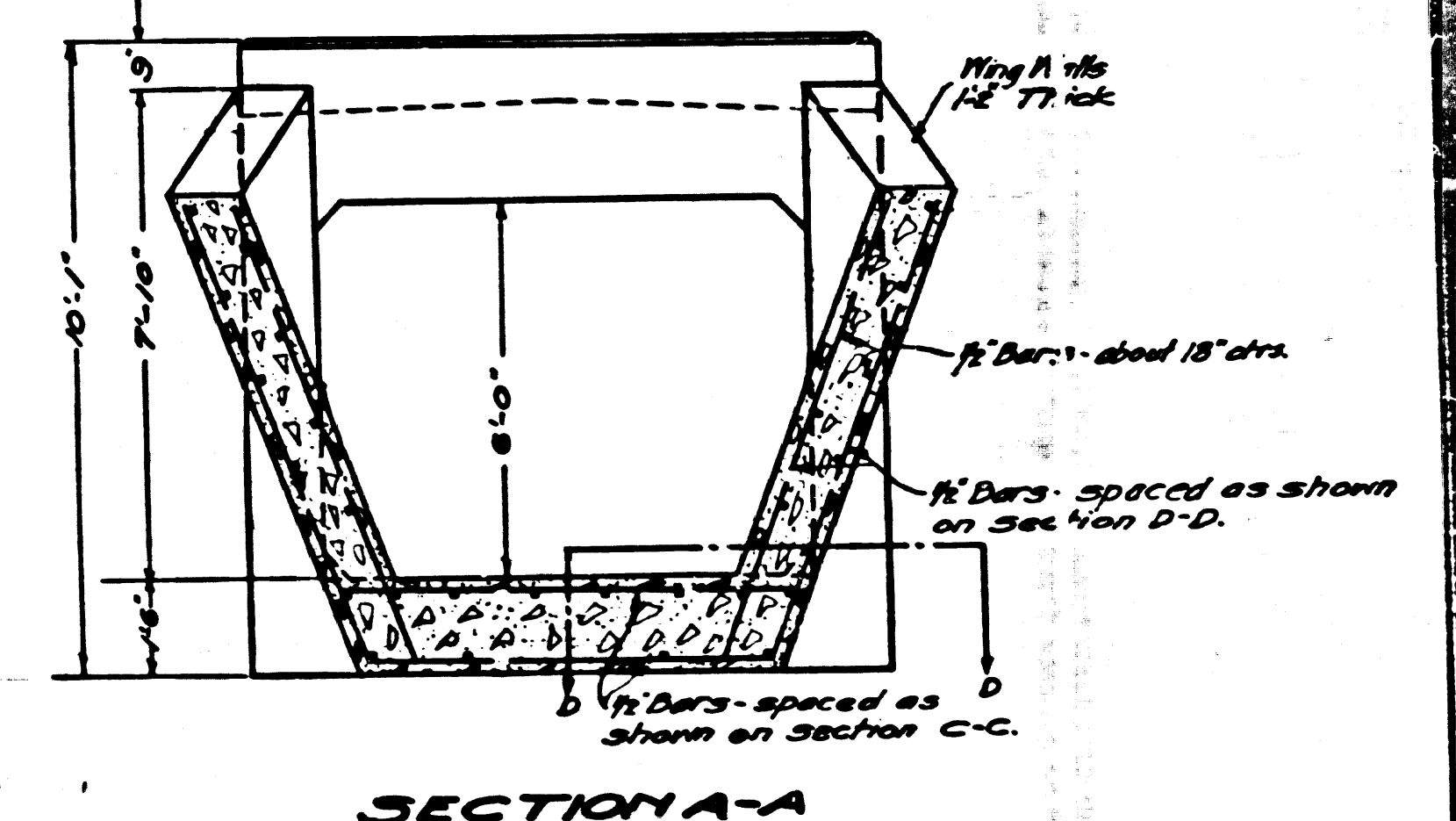


PLAN

CUT-OFF WALL  
MAIN LINE STA. 1+46.71  
AT  
SAN JOSE CREEK  
Scale 1/4" = 1'



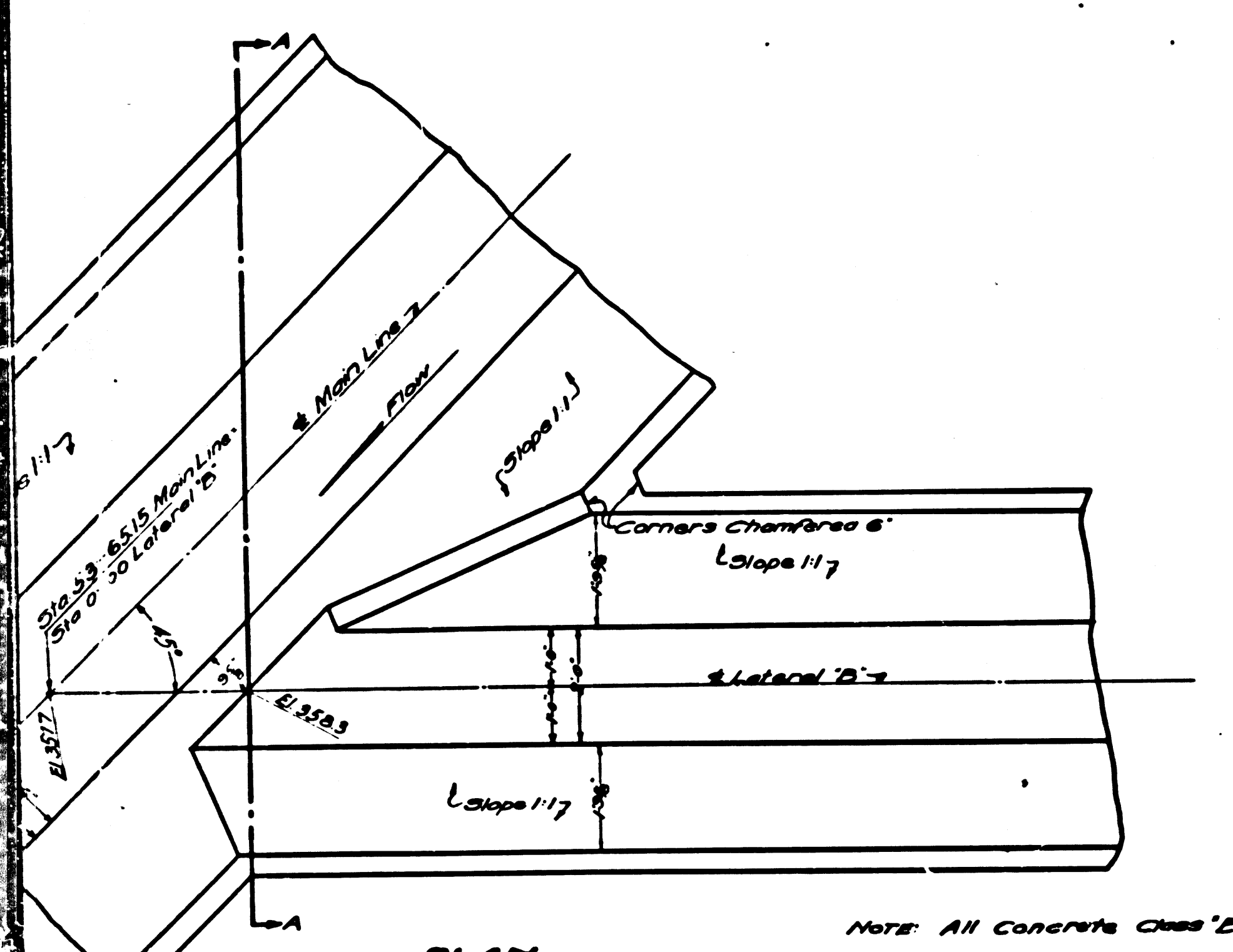
SECTION C-C



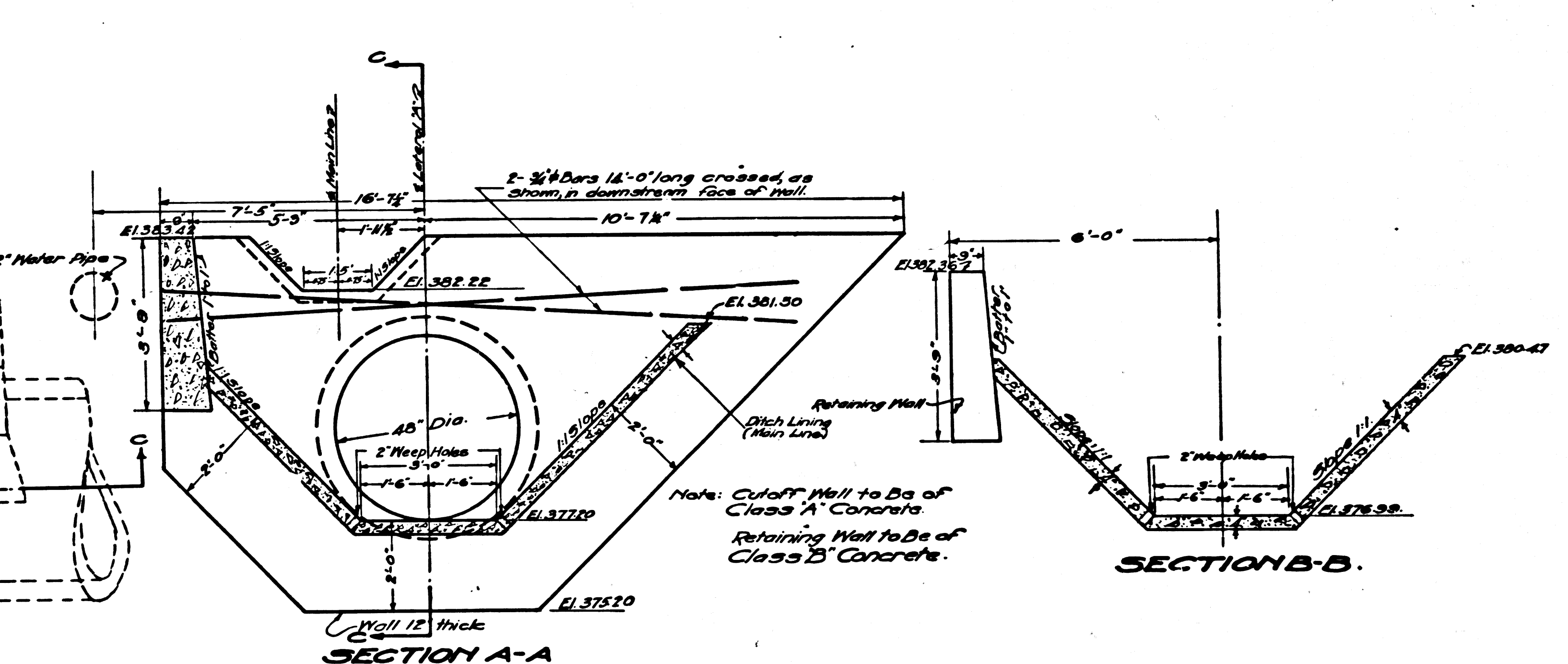
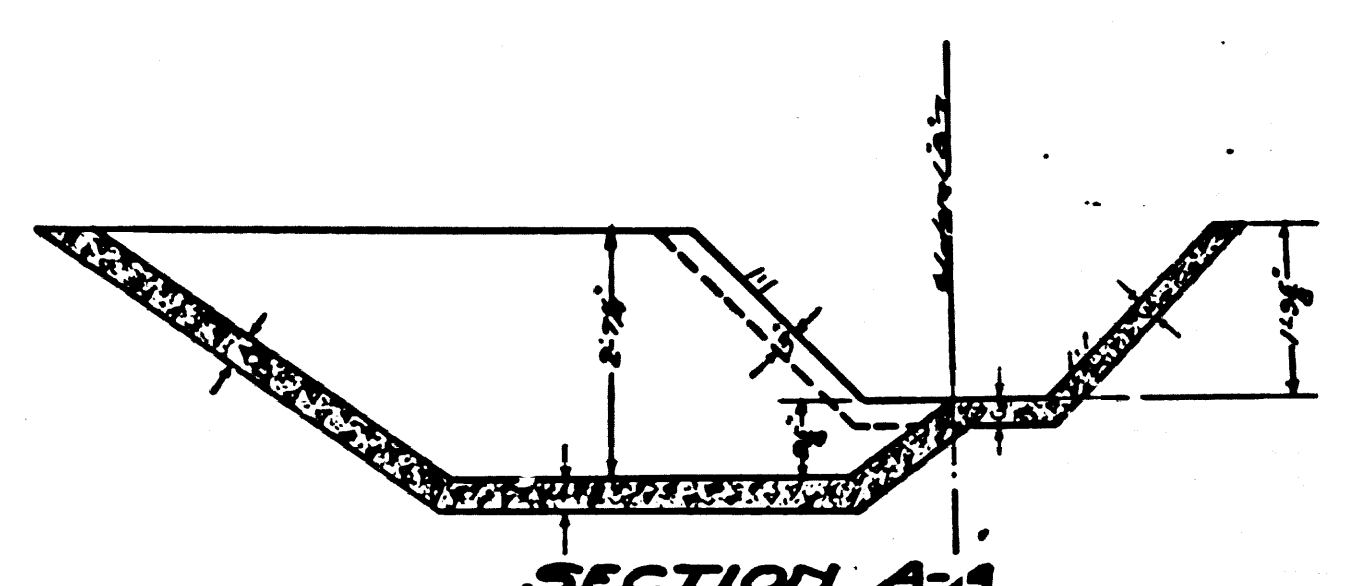
SECTION A-A

CSB 1186-4  
A1 OF A4

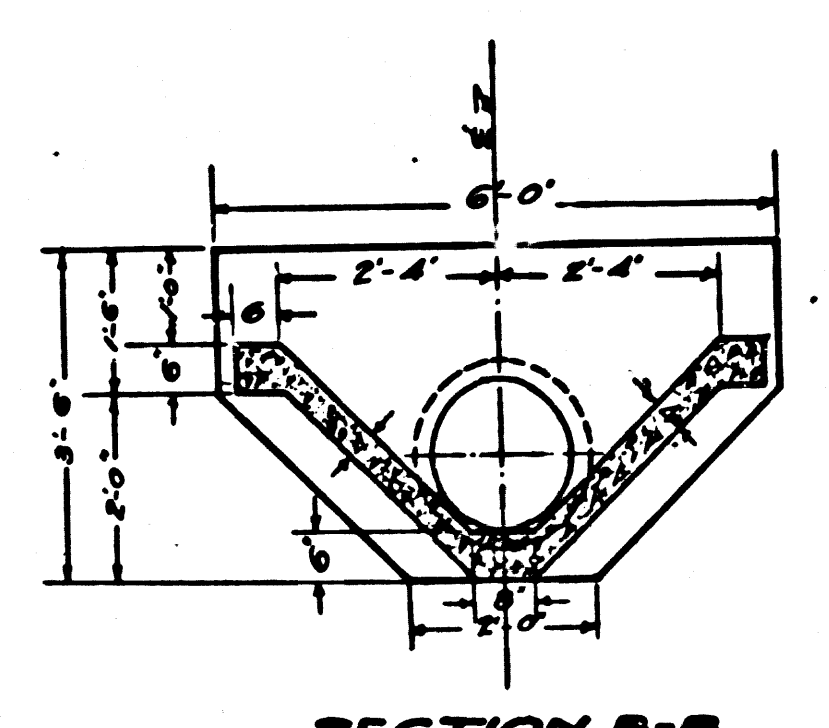
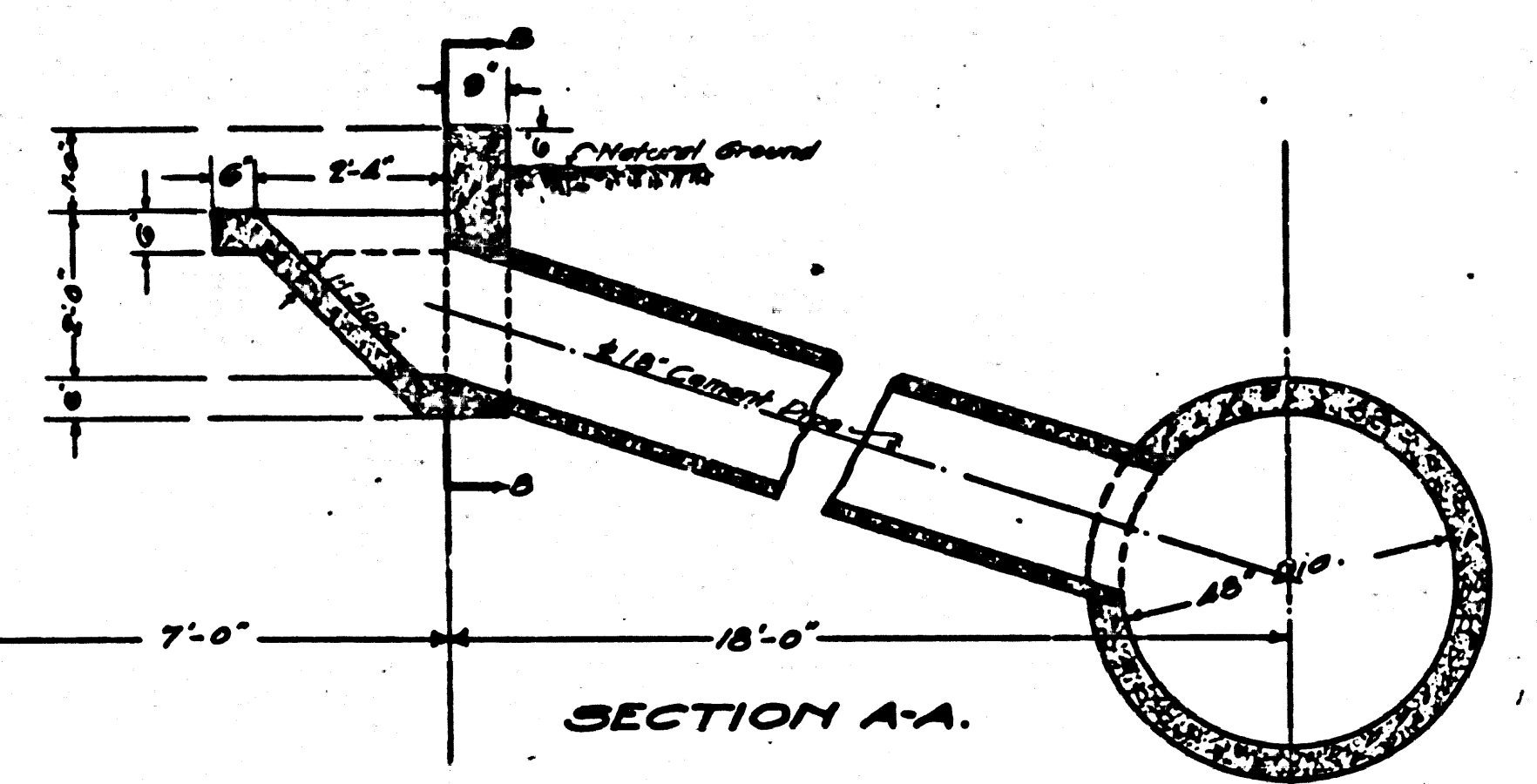




**OUTLET DETAILS - LATERAL 'B'**  
MAIN LINE STA. 53+65.15  
Scale: 1/2" = 1'

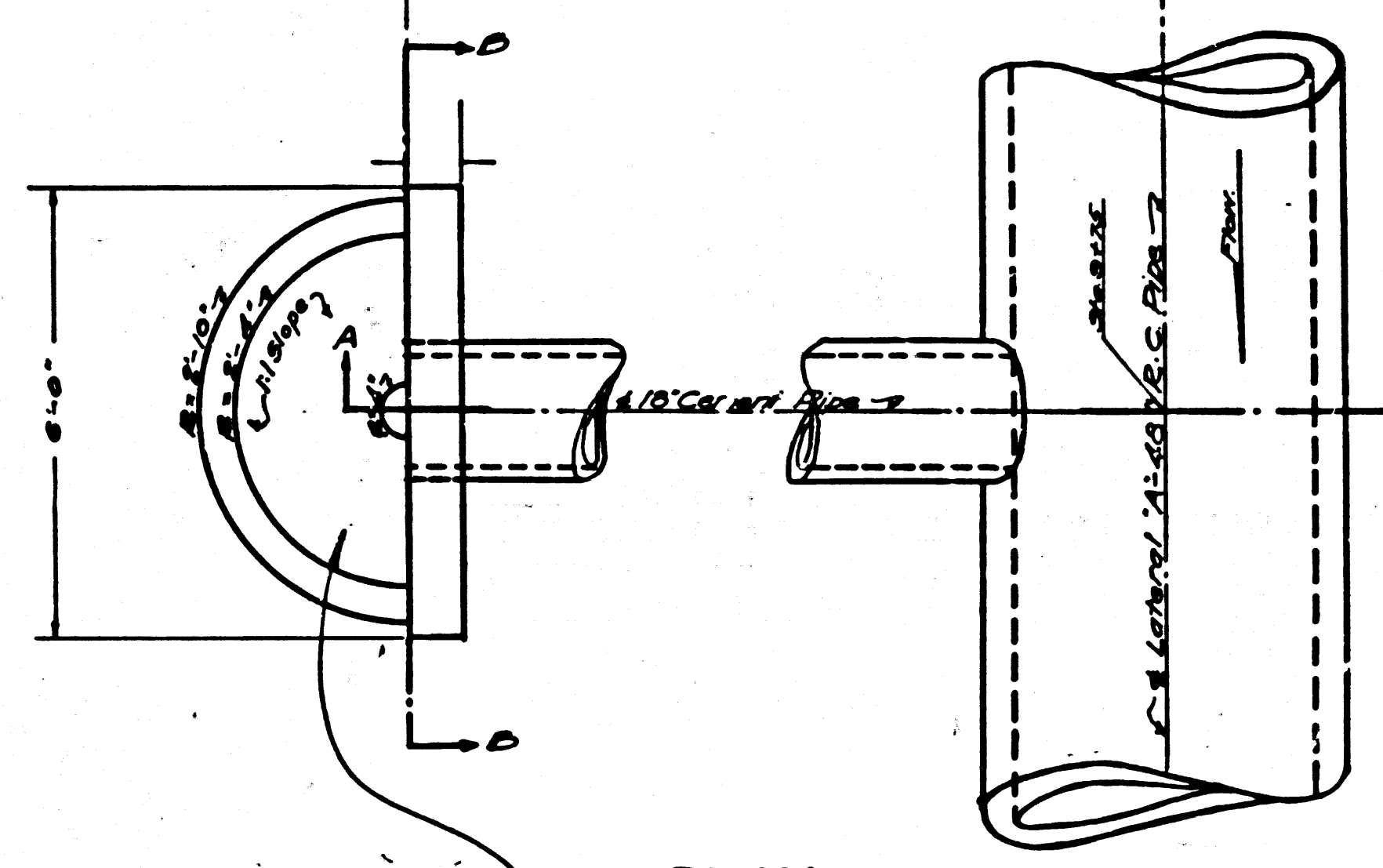


**(OUTLET DETAILS - LATERAL 'A')**  
(CUTOFF WALL - MAIN LINE STA. 63+01.95)  
(RETAINING WALL - MAIN LINE STA. 62+50 TO STA. 63+01.95)  
Scale: 1/2" = 1'

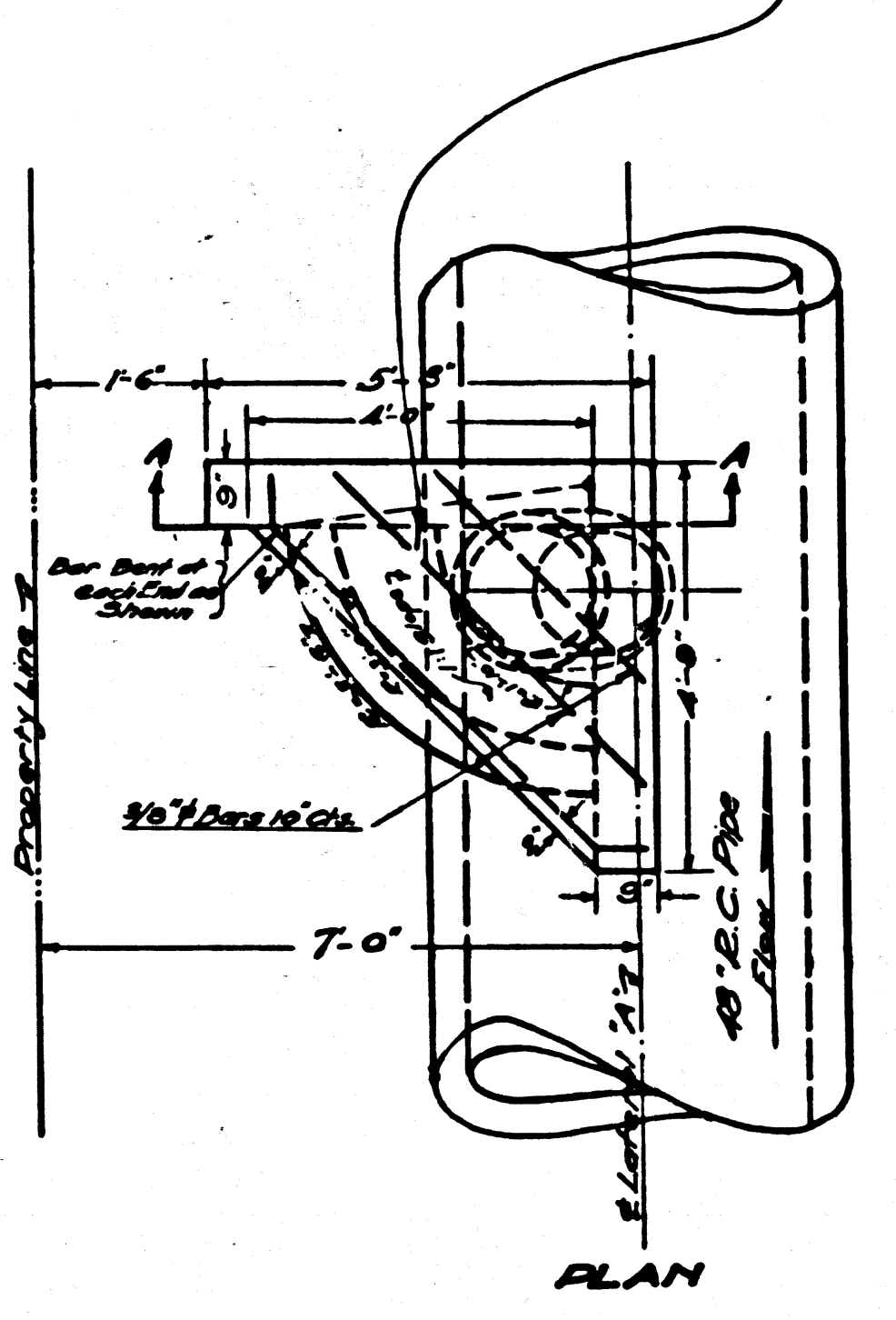


NOTES: All Concrete Class B  
The entire roadway surface within 5' of the catch basin opening shall be modeled or remodeled to slope uniformly to the catch basin opening. Also a kerfway shall be opened to the catch basin.

**SPECIAL CATCH BASIN LATERAL 'A' STA. 9+75.**  
Scale: 1/2" = 1'

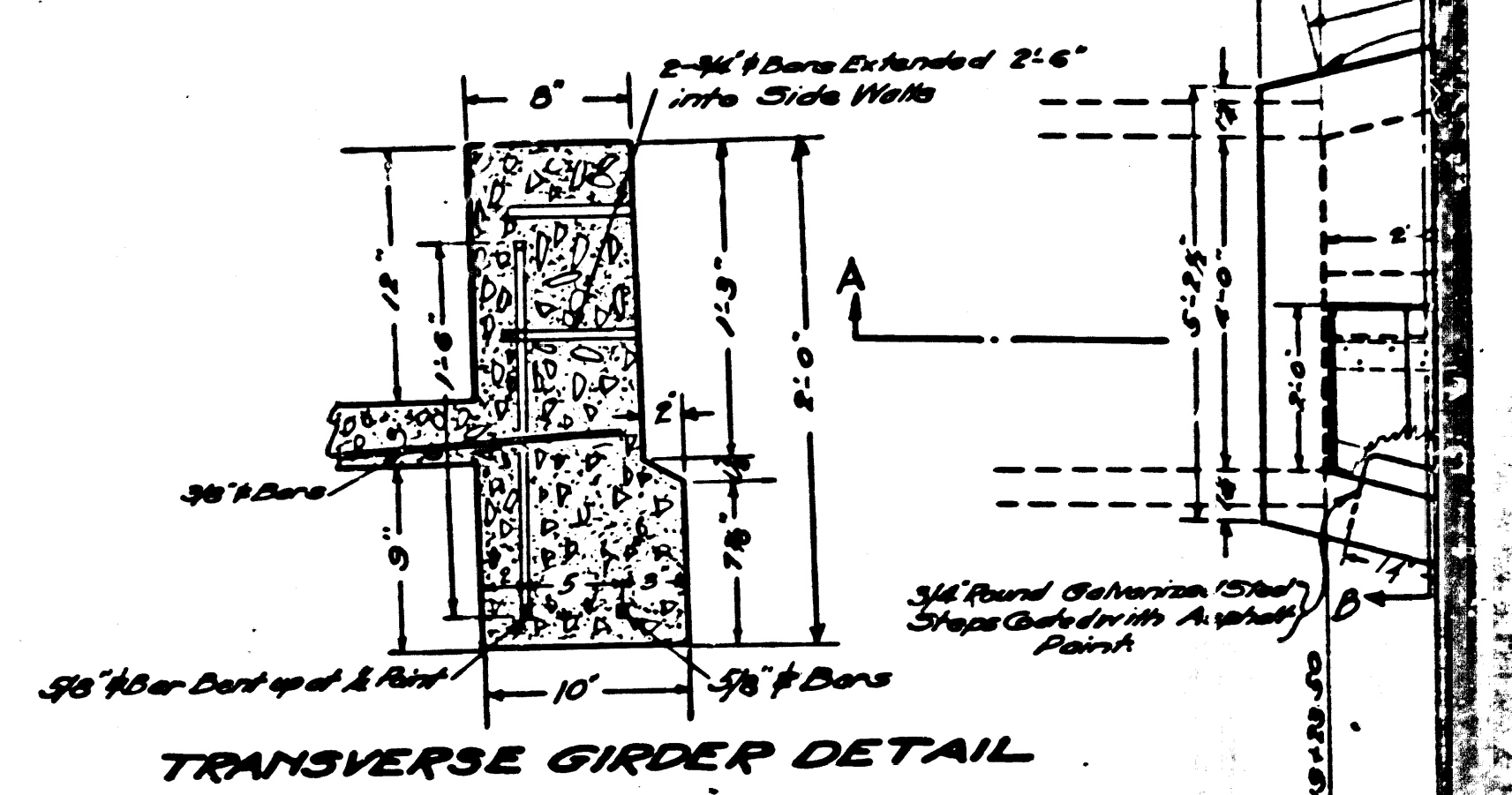


Note: Concrete on slope to be placed without forms.

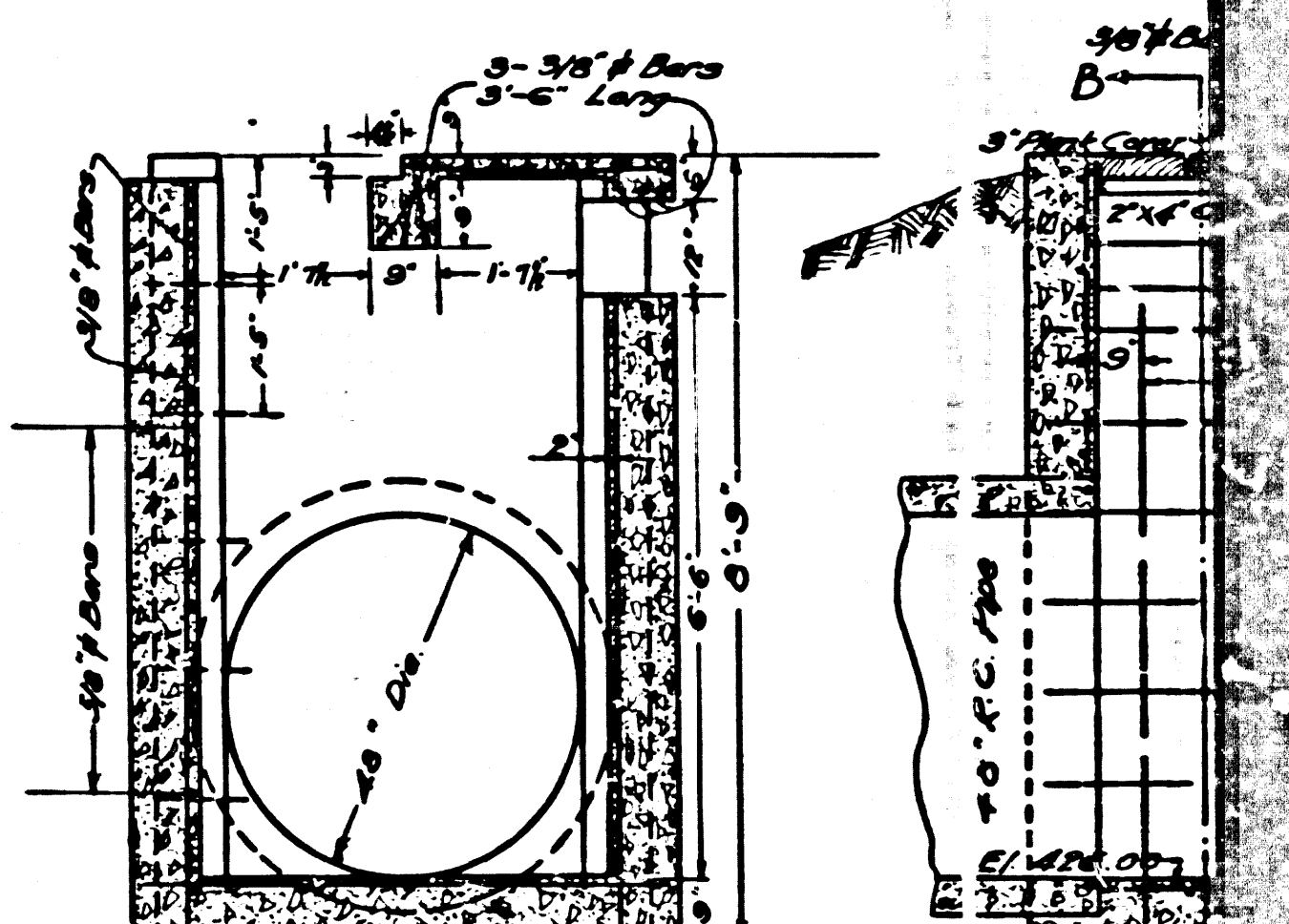


NOTES: All Concrete Class A  
The entire roadway surface within 5' of the catch basin opening shall be modeled or remodeled to slope uniformly to the catch basin opening. Also a kerfway shall be opened to the catch basin.

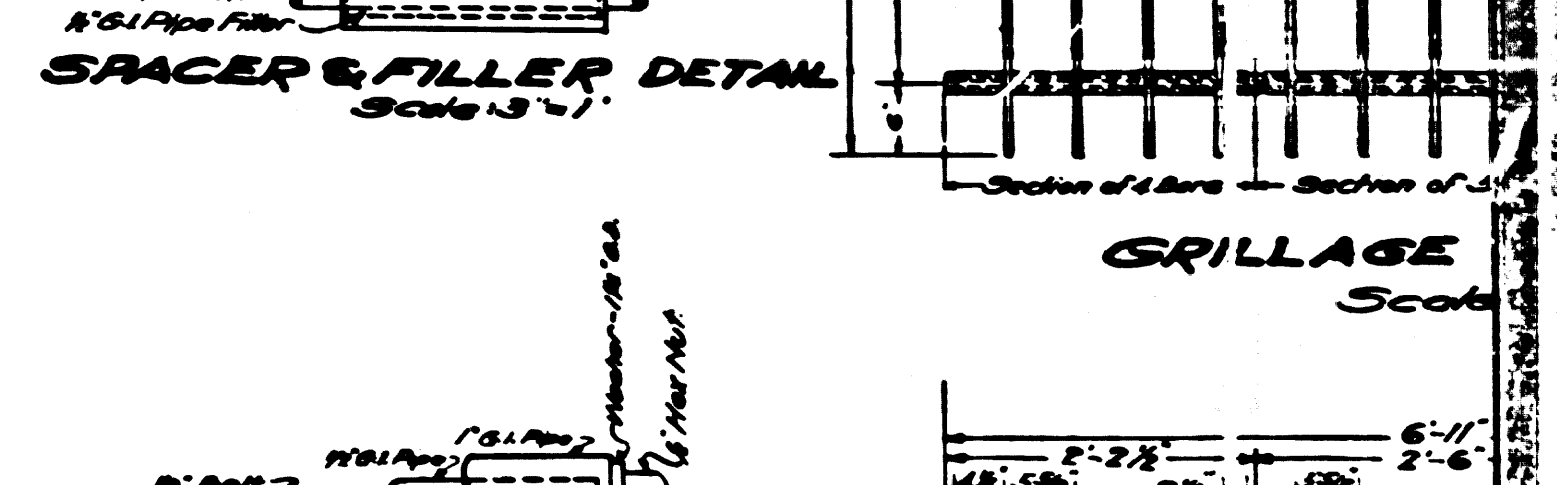
**SPECIAL CATCH BASIN LATERAL 'A' STA. 16+00**  
Scale: 1/2" = 1'



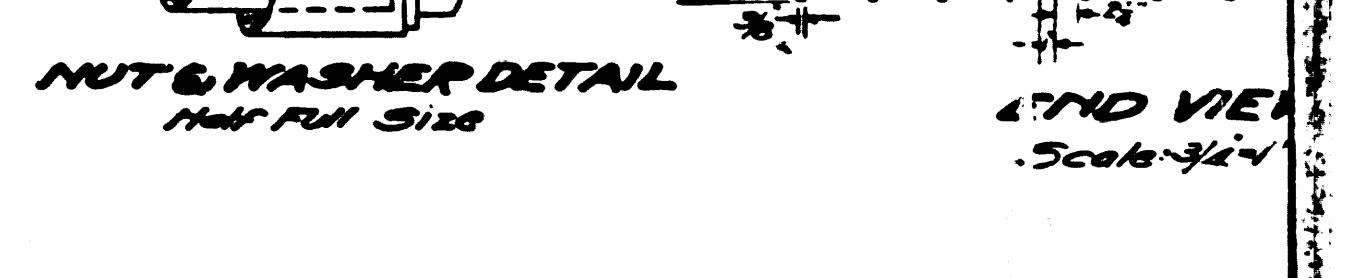
**TRANSVERSE GIRDER DETAIL**  
Scale: 1/2" = 1'



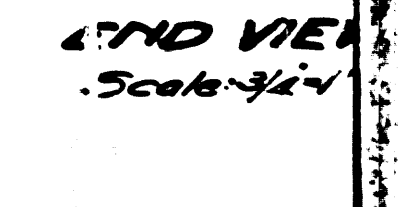
**SECTION B-B**  
Scale: 1/2" = 1'



**SPACER & FILLER DETAIL**  
Scale: 1/2" = 1'



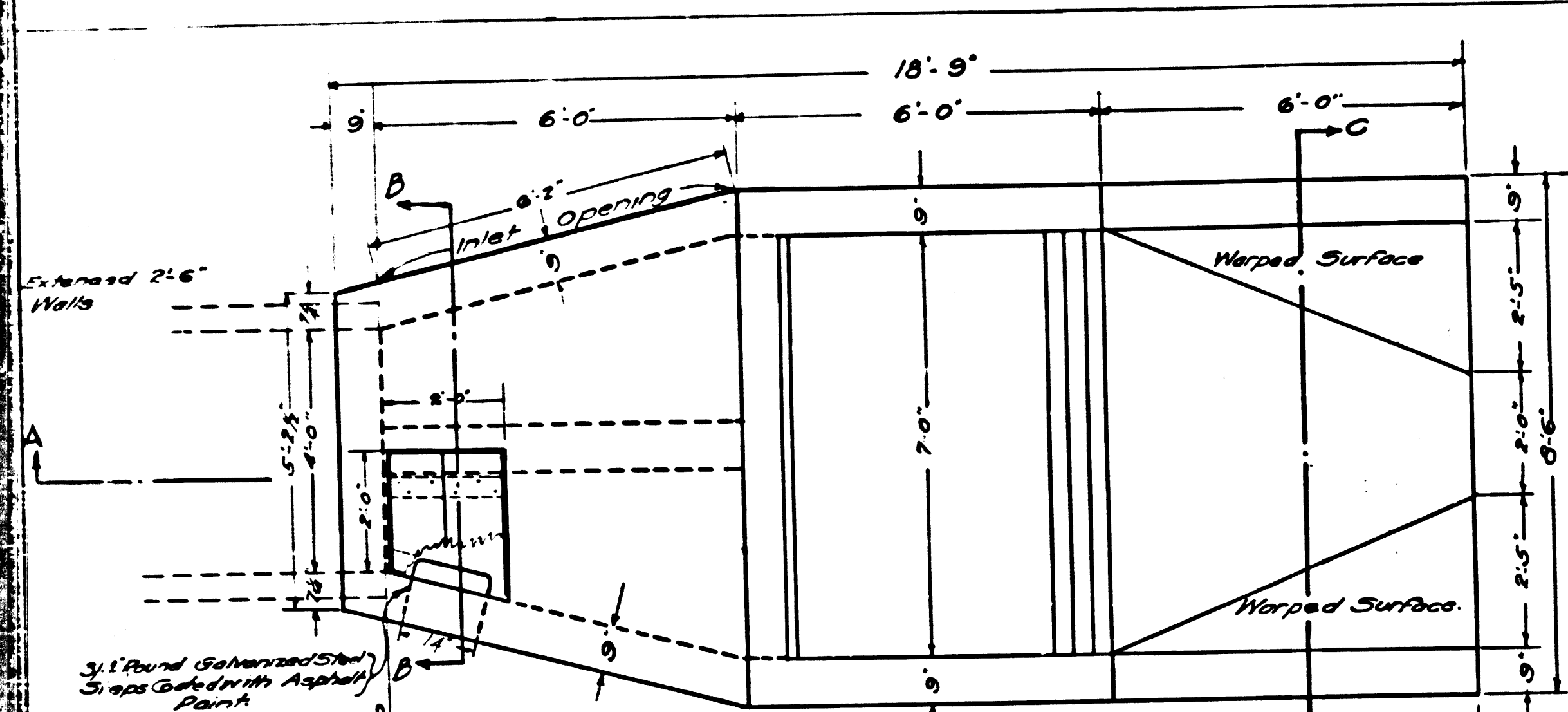
**NUT & WASHER DETAIL**  
Half Full Size



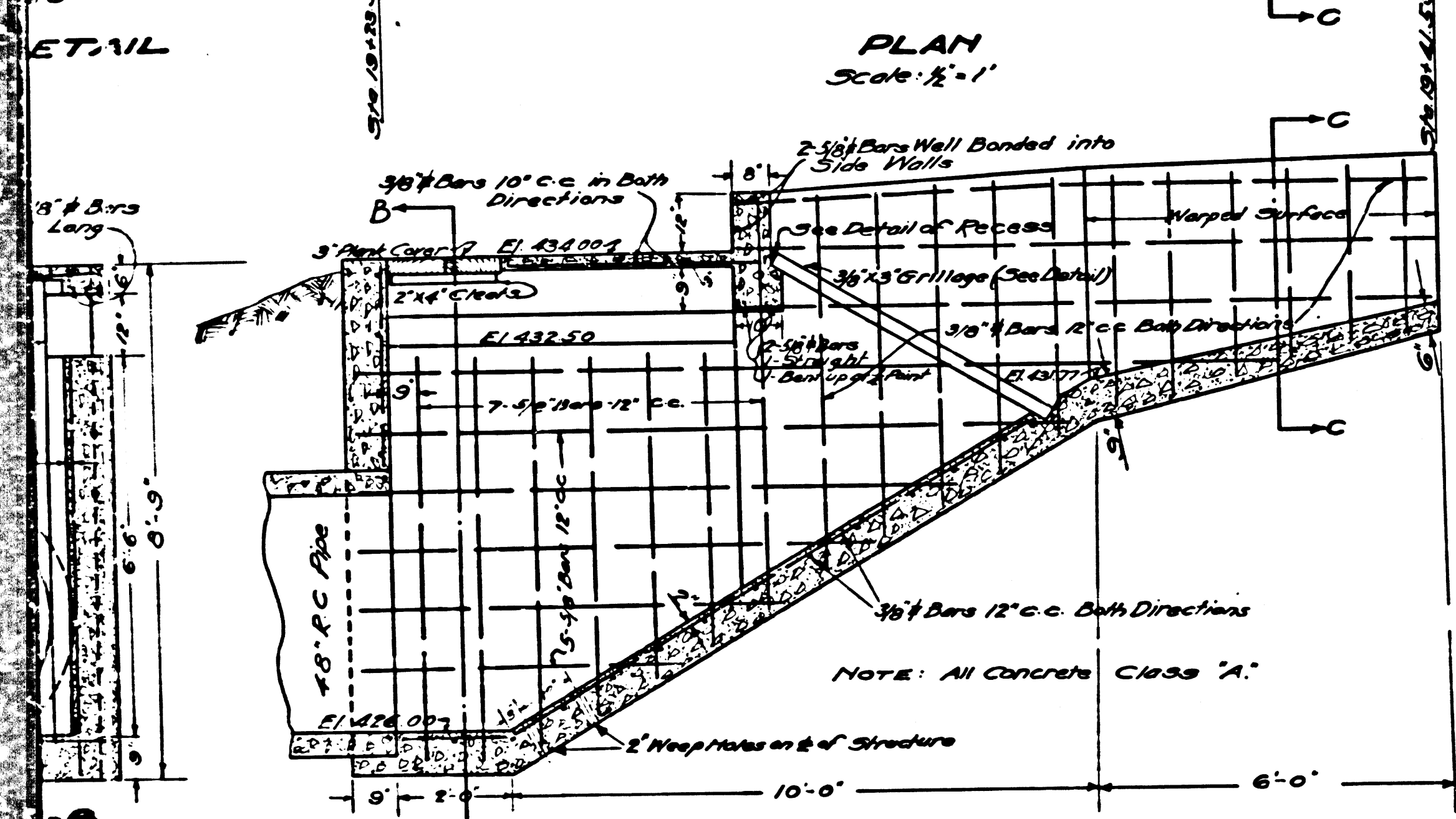
**GRILLAGE**  
Scale: 1/2" = 1'

CSB 118 6-4  
A3 OF A4

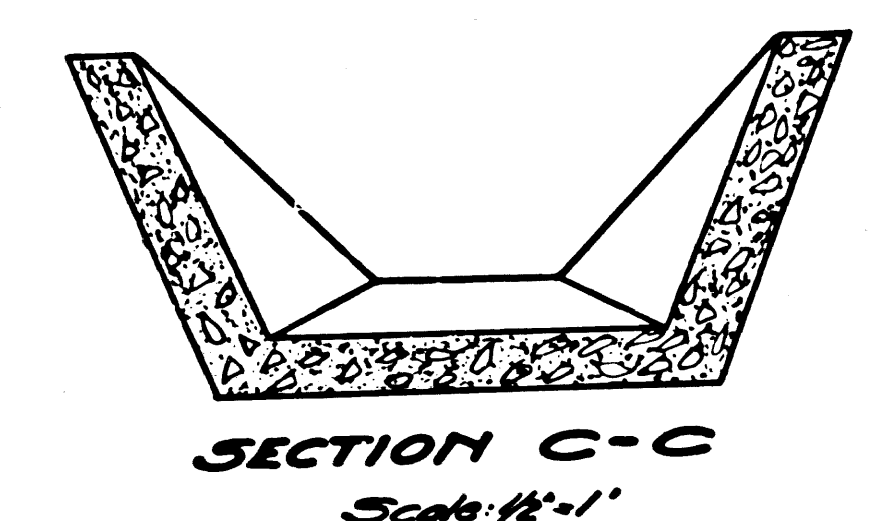




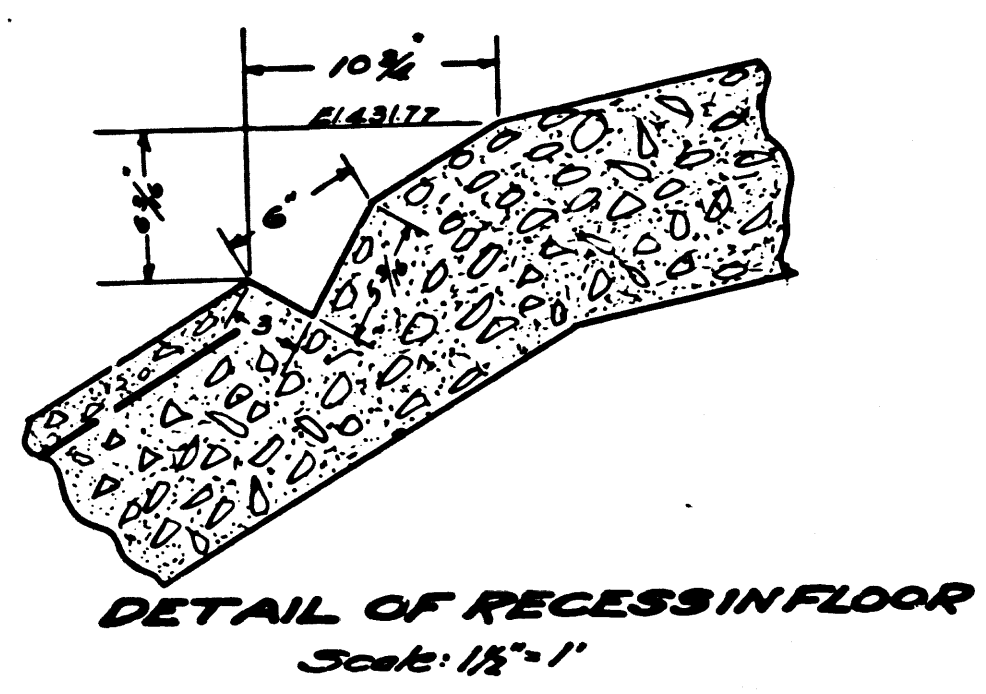
PLAN  
Scale: 1/2"=1'



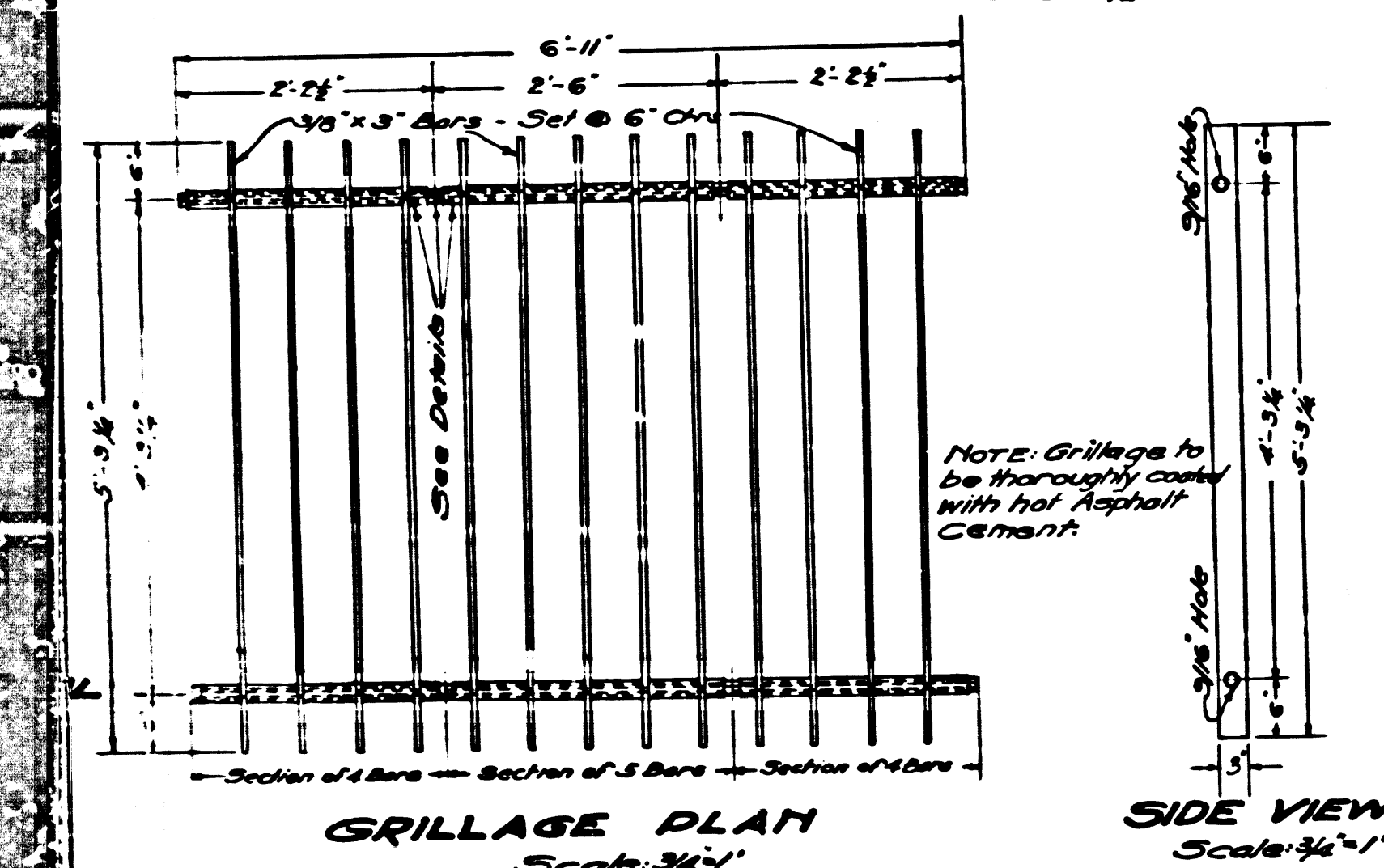
LONGITUDINAL SECTION A-A  
Scale: 1/2"=1'



SECTION C-C  
Scale: 1/2"=1'



DETAIL OF RECESS IN FLOOR  
Scale: 1/2"=1'

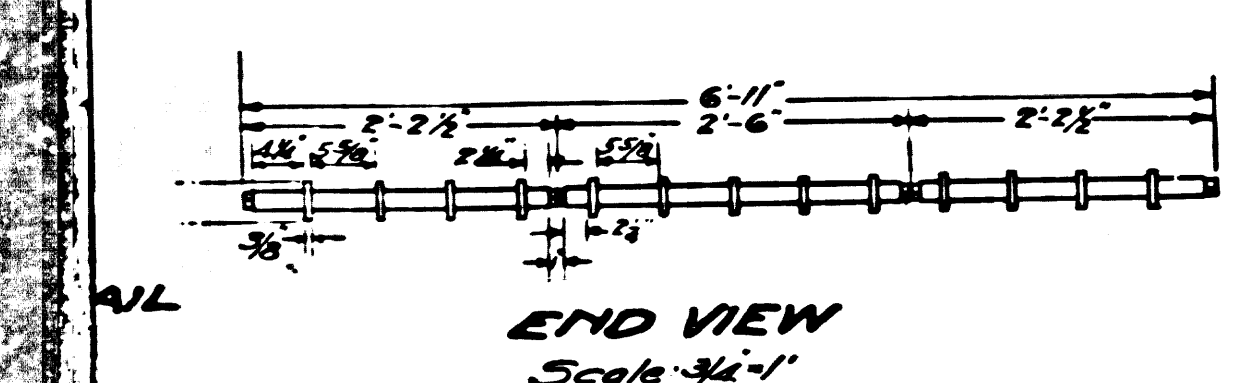


GRILLAGE PLAN  
Scale: 3/4"=1'

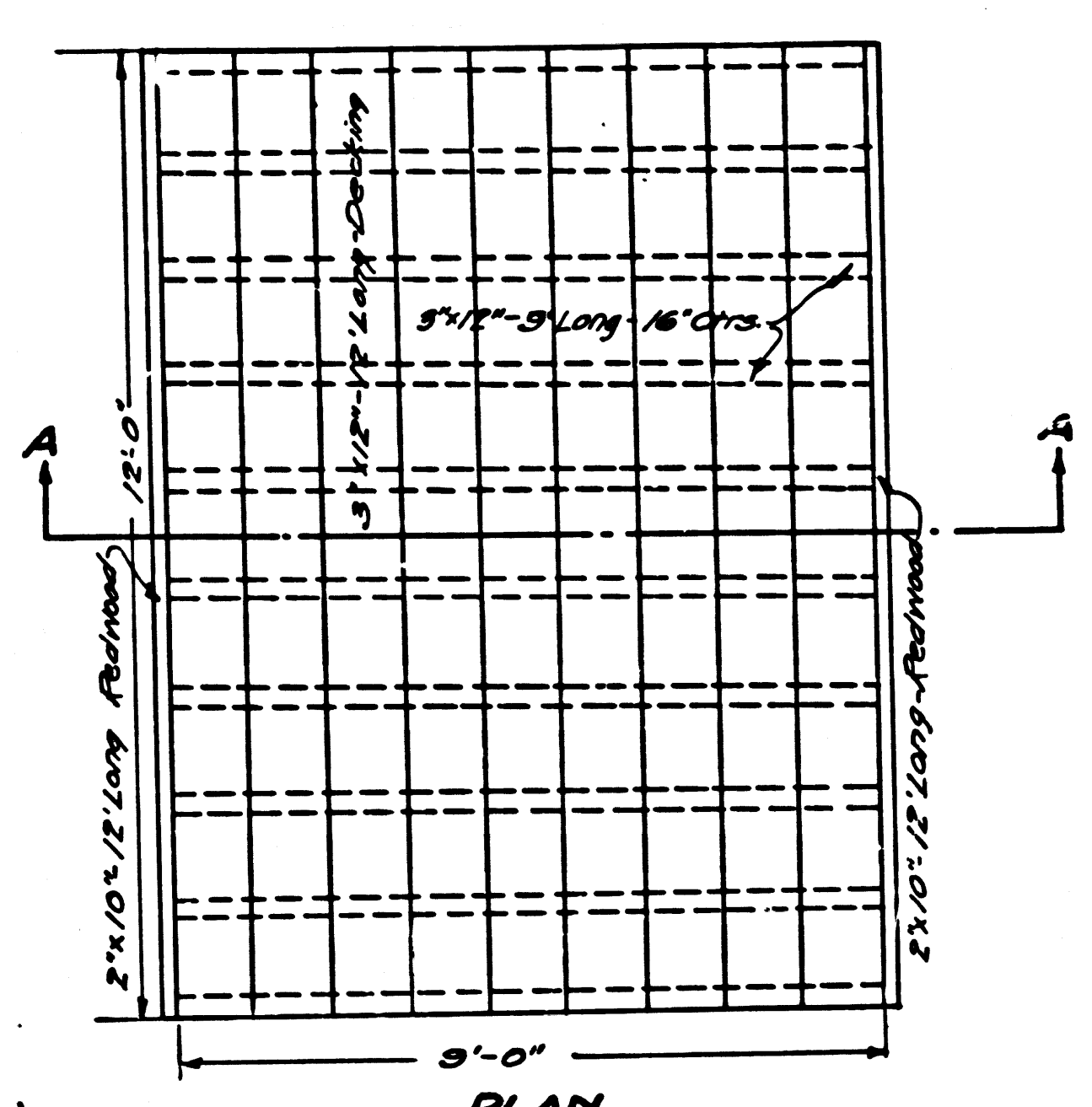
SIDE VIEW  
Scale: 3/4"=1'

Note: Grillage, steps and wooden manhole covers to be included in unit price bid for cement concrete in place.

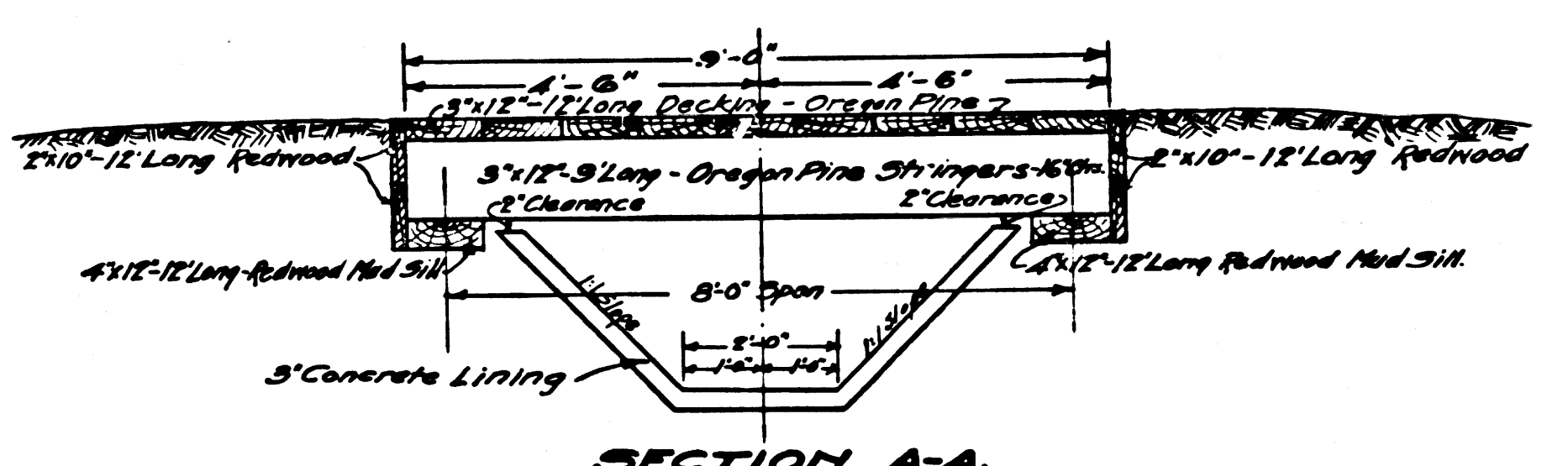
TRANSITION STRUCTURE  
LATERAL "A" STA. 19+23.50.  
Scale: as Noted.



END VIEW  
Scale: 3/4"=1'

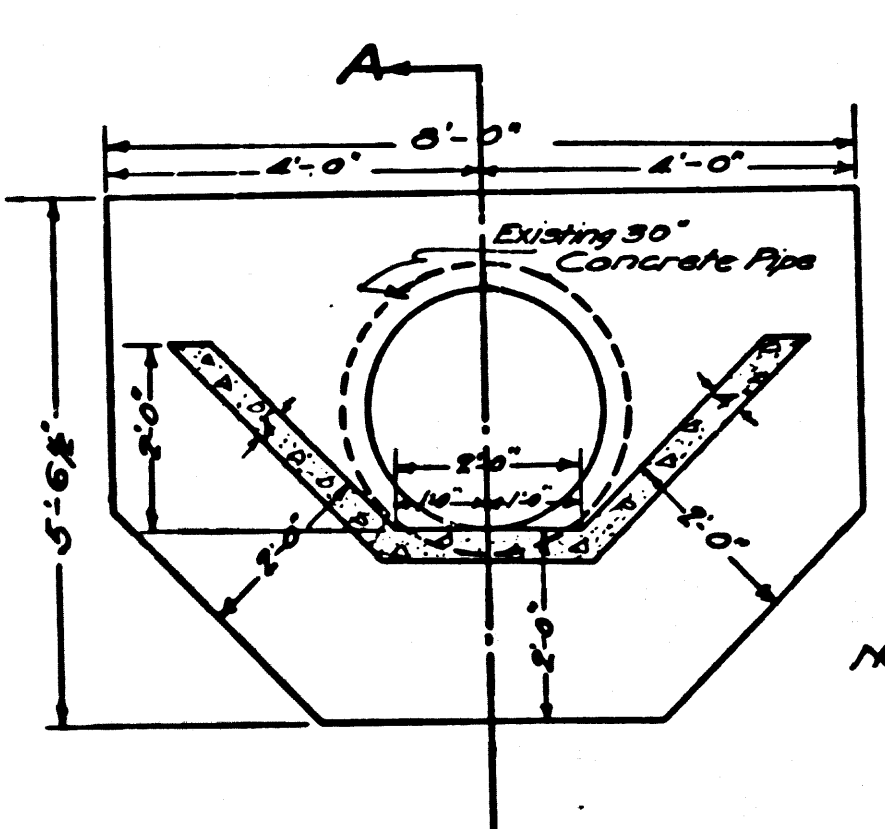


PLAN

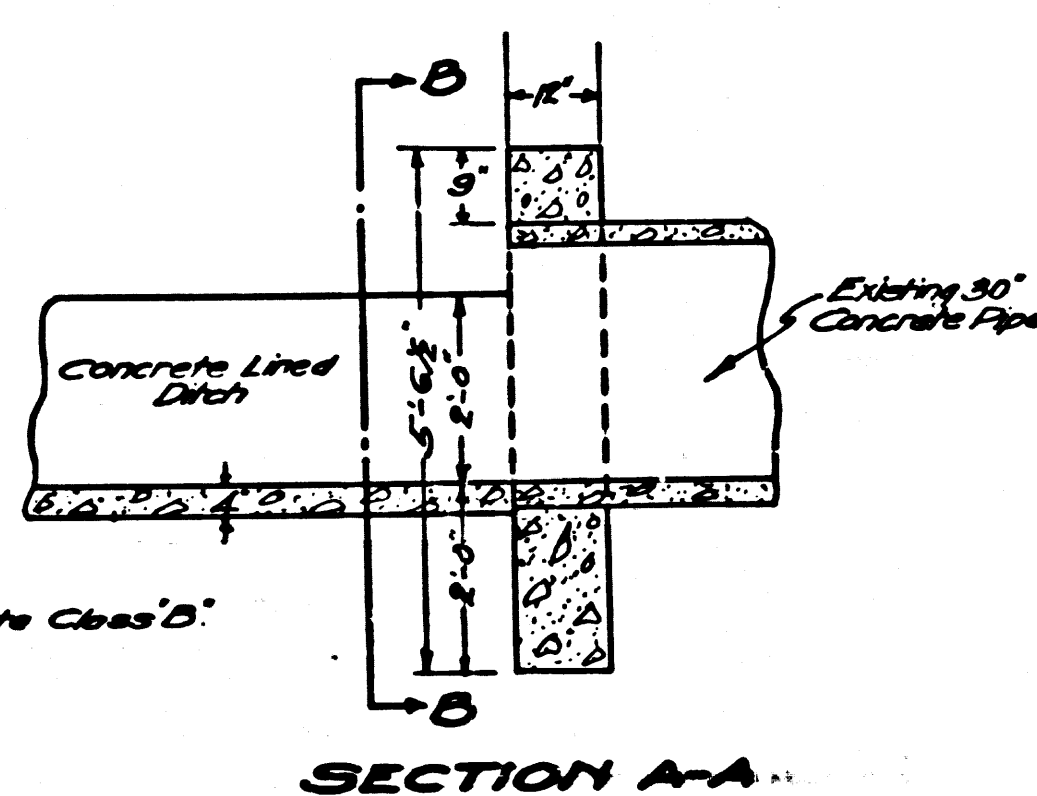


SECTION A-A.

TIMBER BRIDGE  
FOR  
LATERAL "A" STA. 32+77  
OR  
LATERAL "B" STA. 3+27.  
Scale: 1/2"=1'

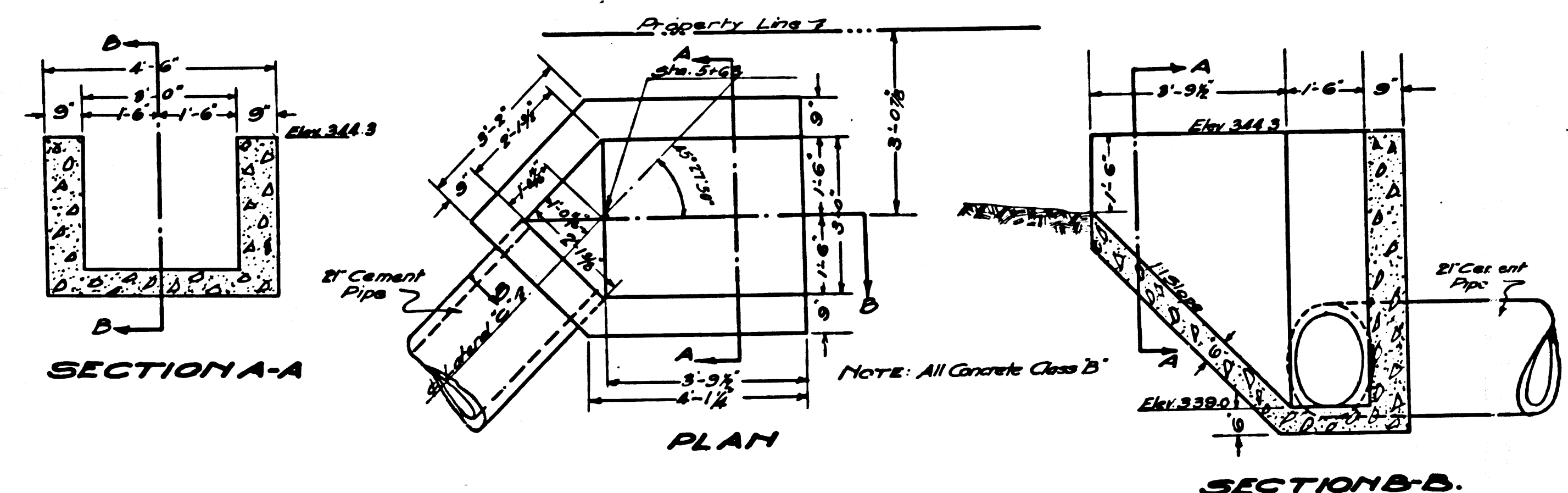


SIDE VIEW & SECTION B-B



SECTION A-A.

CUTOFF WALL  
LATERAL "A" STA. 41+56.29  
Scale: 1/2"=1'



INTAKE  
LATERAL "C" STA. 5+63  
Scale: 1/2"=1'

—ABANDONED—

**DRAINAGE DISTRICT  
IMPROVEMENT NO. 19**

OF THE  
COUNTY OF LOS ANGELES

DETAILS OF STRUCTURES

SCALE AS SHOWN DECEMBER 1926

SHEET 4 OF 4 SHEETS

J. E. ROCKWOLD - COUNTY SURVEYOR

Submitted *W.D. Jones*  
Chief Deputy

Approved *J. E. Rockwold*  
County Surveyor

Approved as to form  
Council of Matteson  
County Council

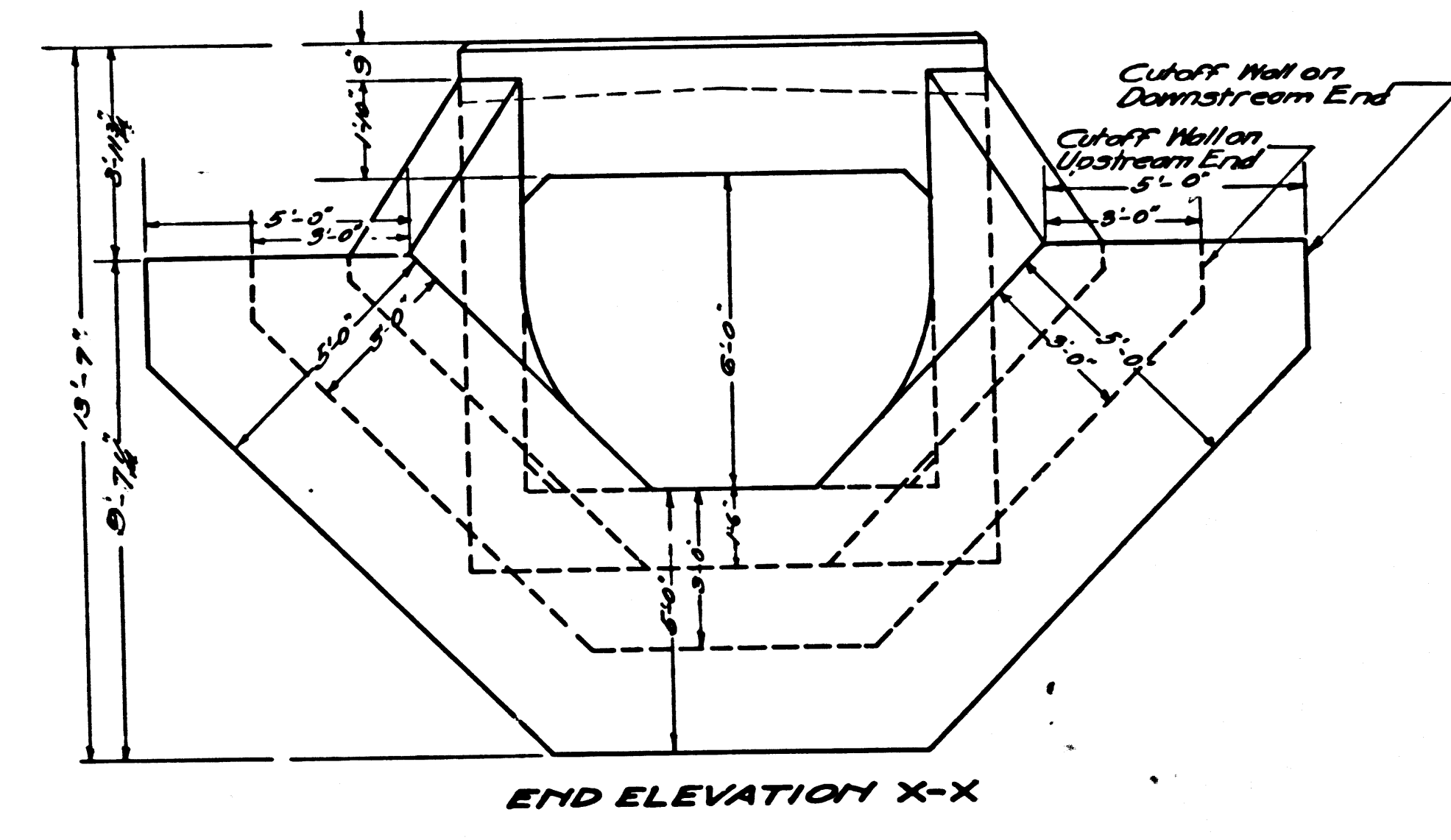
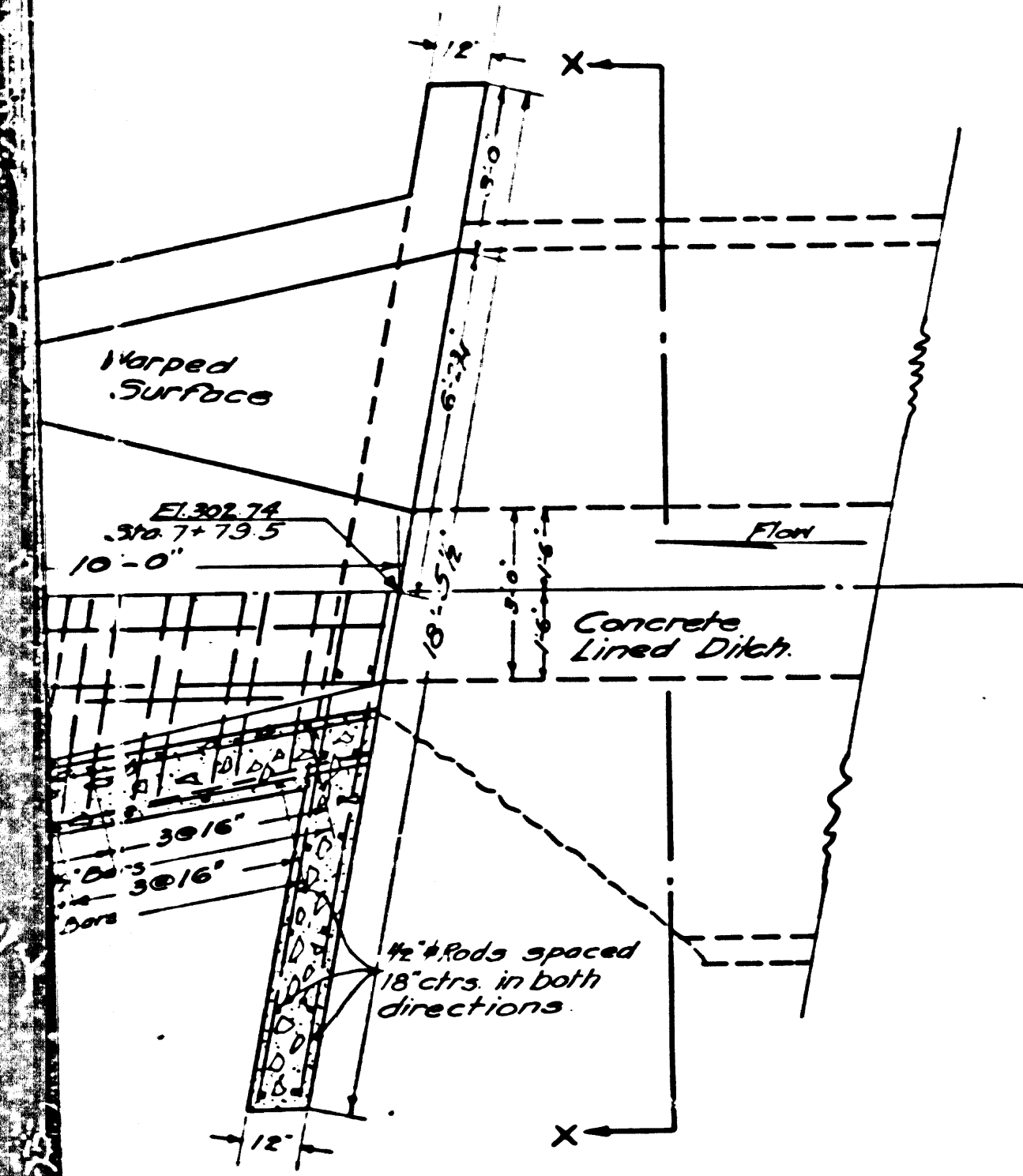
by *J. E. Rockwold*  
Deputy

Notes:  
All pipe not otherwise specified  
shall be plain cement pipe.  
Elevations are in feet above U.S.G.S.  
or Mean Sea Level Datum.  
Exposed top surfaces of concrete  
structures shown on this plan shall be  
given a steel wall finish.

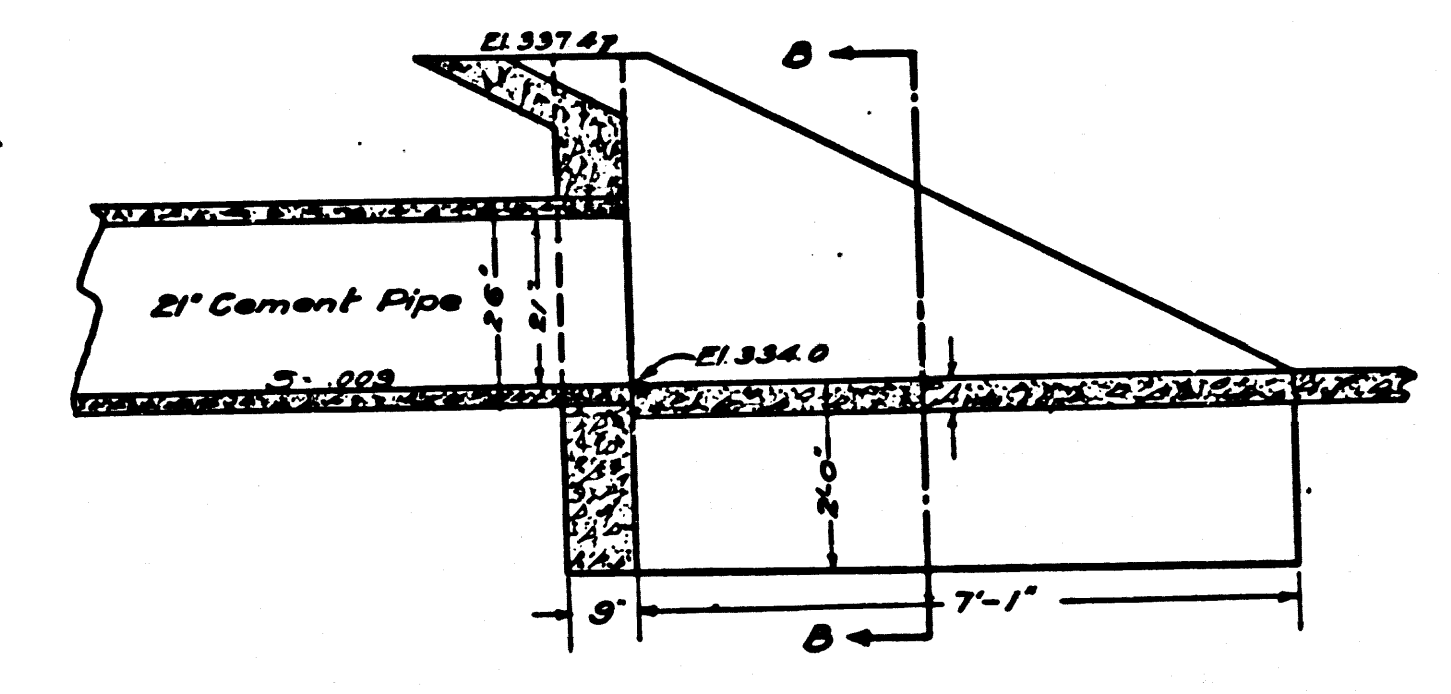
References			
F.B. 229	Designed by	Boatwink	
L.B. 304	Traced by	Partin	
	Checked by	Boatwink	

CSB 1186-4  
A4 OF A4

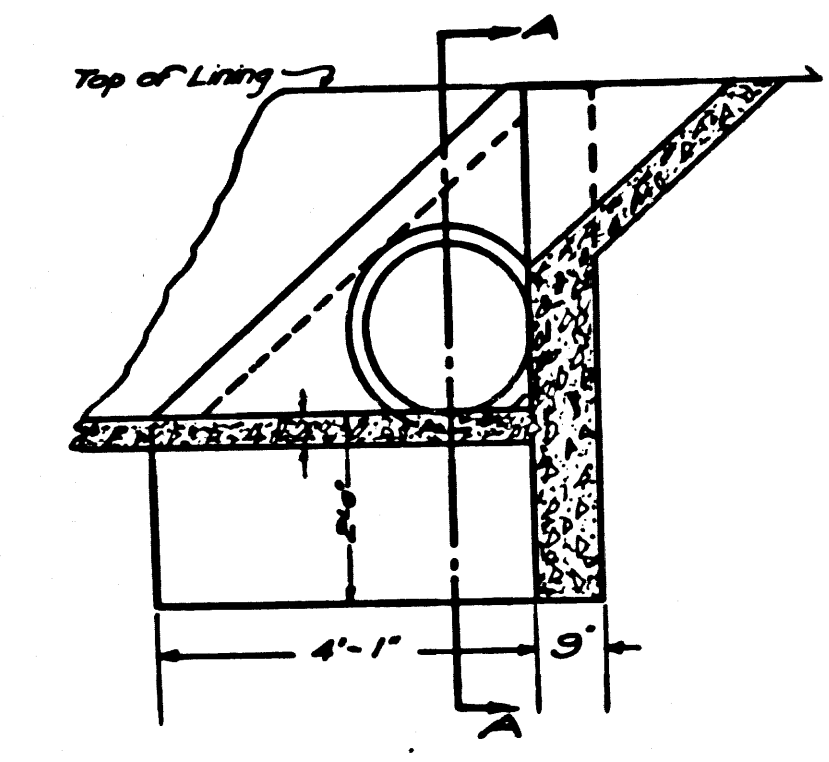




END ELEVATION X-X

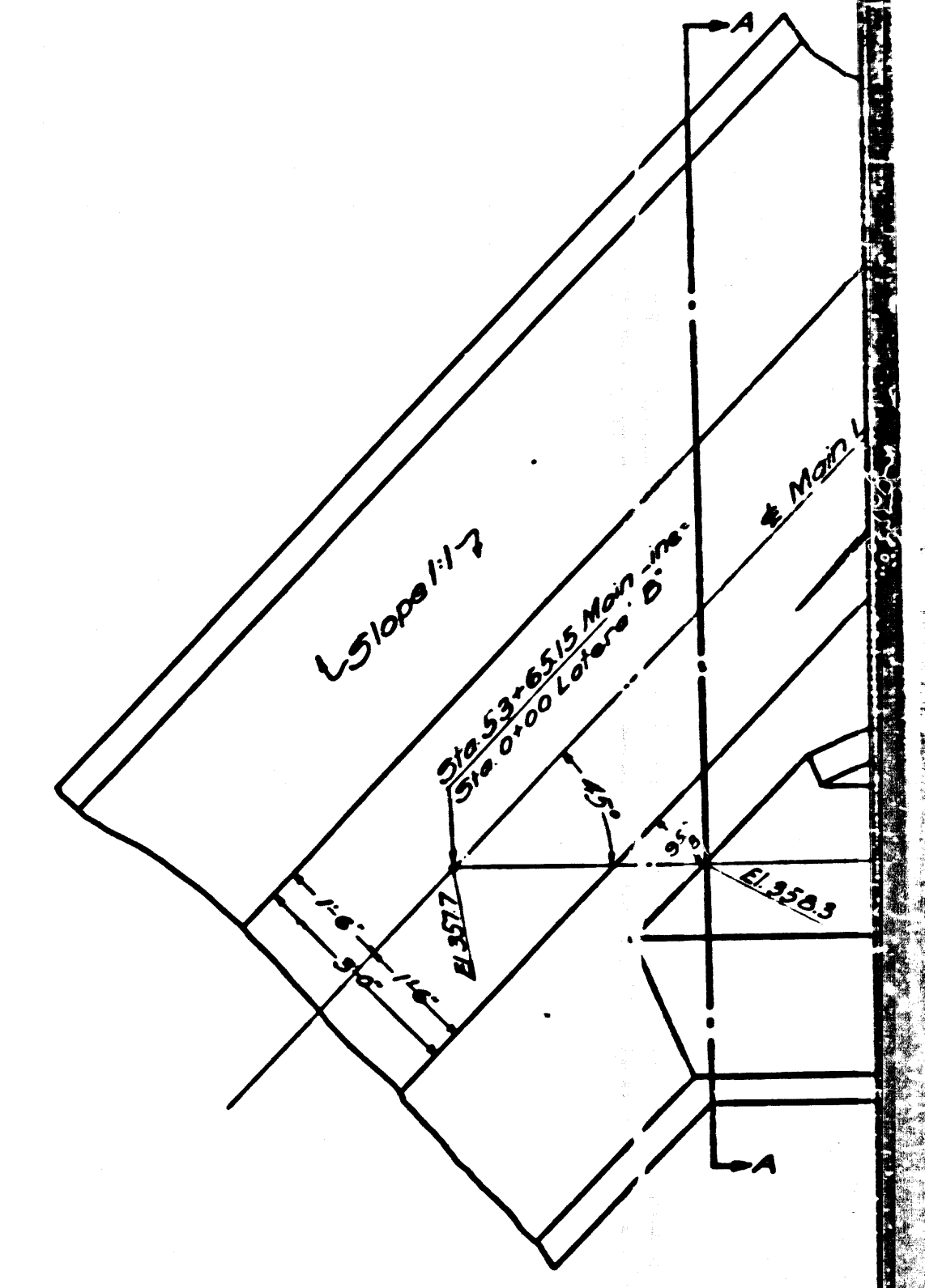


SECTION A-A



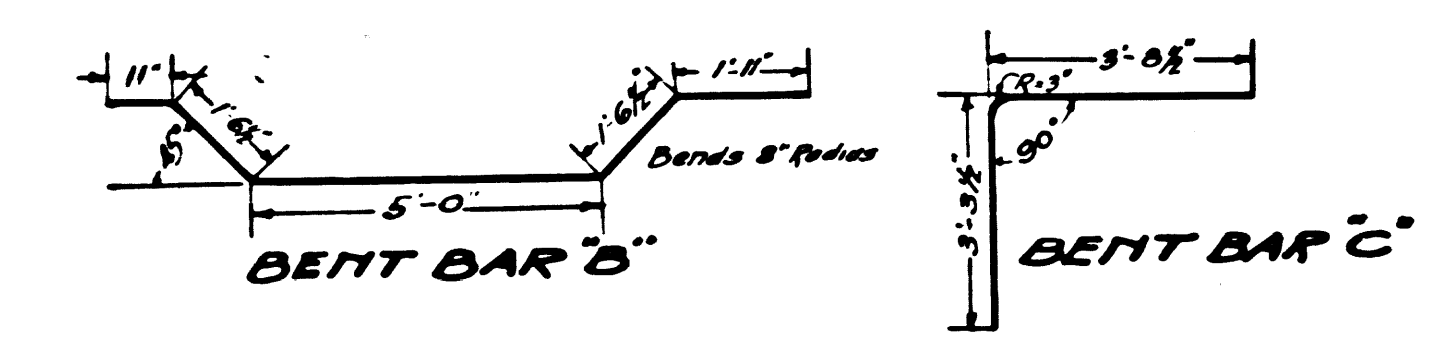
SECTION B-B

Note: All concrete to be Class 'B'



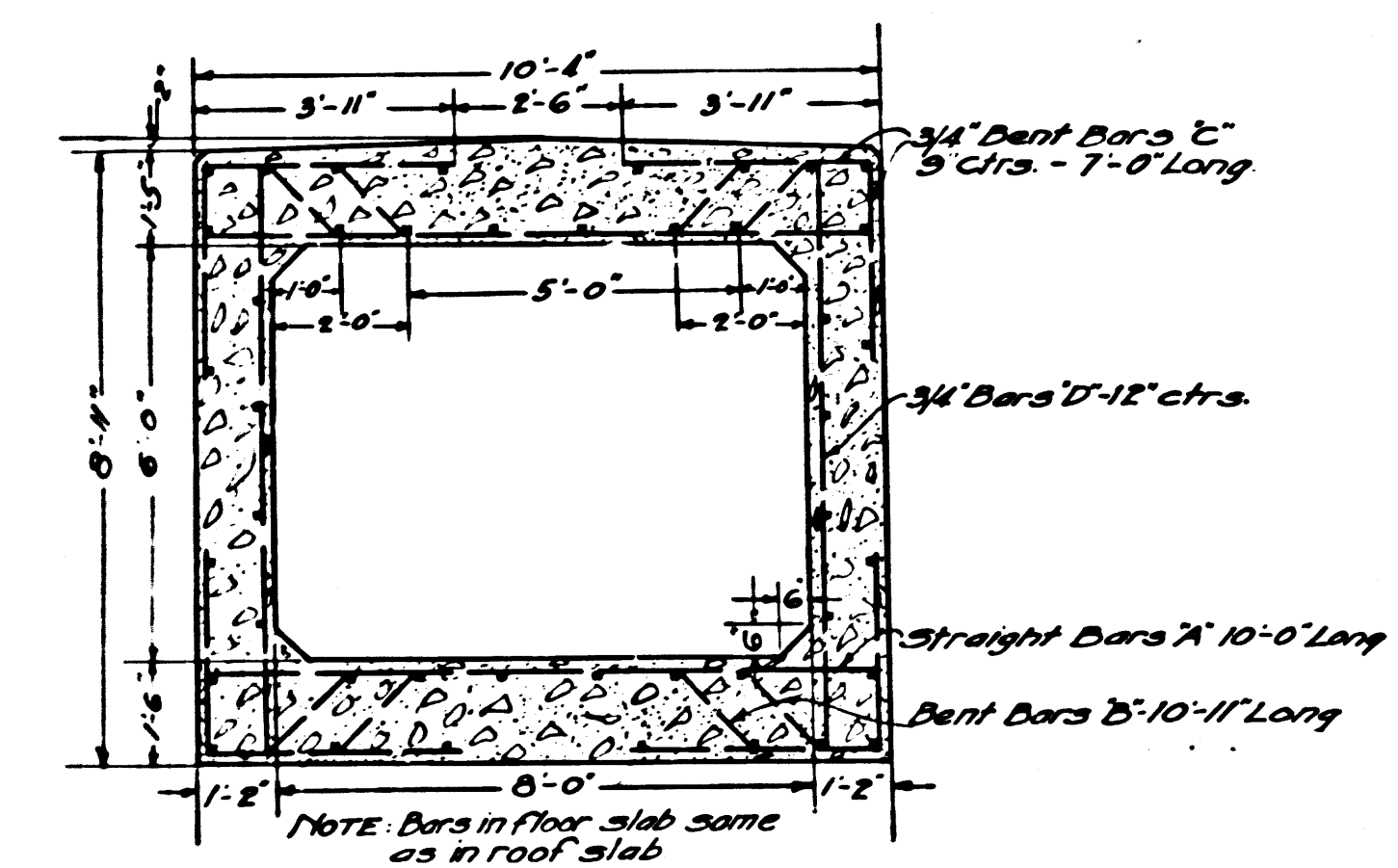
OUTLET DETAILS - LATERAL 'C'  
MAIN LINE STA. 36+01.51  
Scale: 1/2" = 1'

NOTES:  
All reinforcing steel shall be square deformed bars.  
All bars shall be lapped at least 30 diameters and placed not less than 2" from surface of masonry unless otherwise specified.  
All concrete shall be Class 'A'.



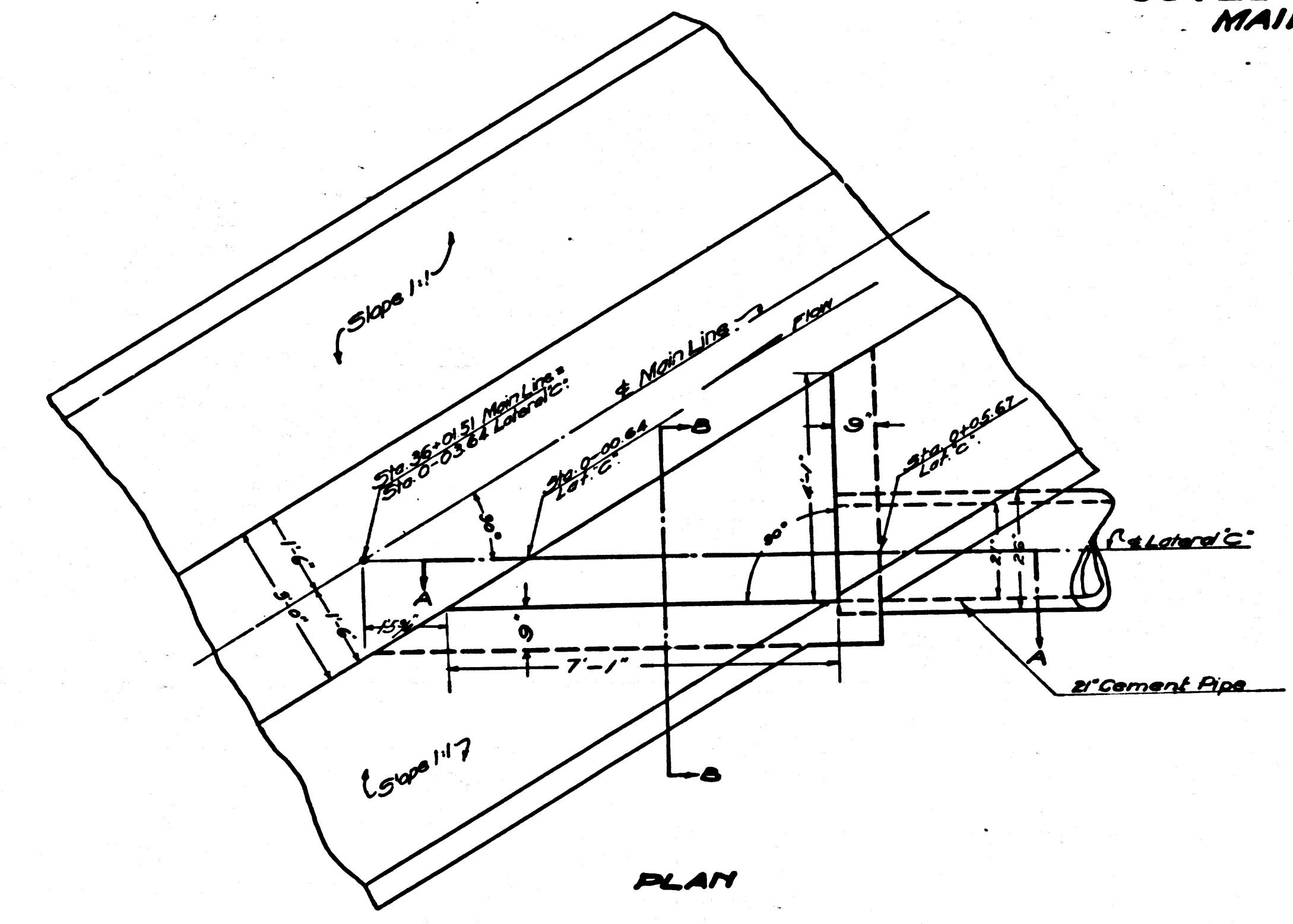
BENT BAR 'B'

BENT BAR 'C'

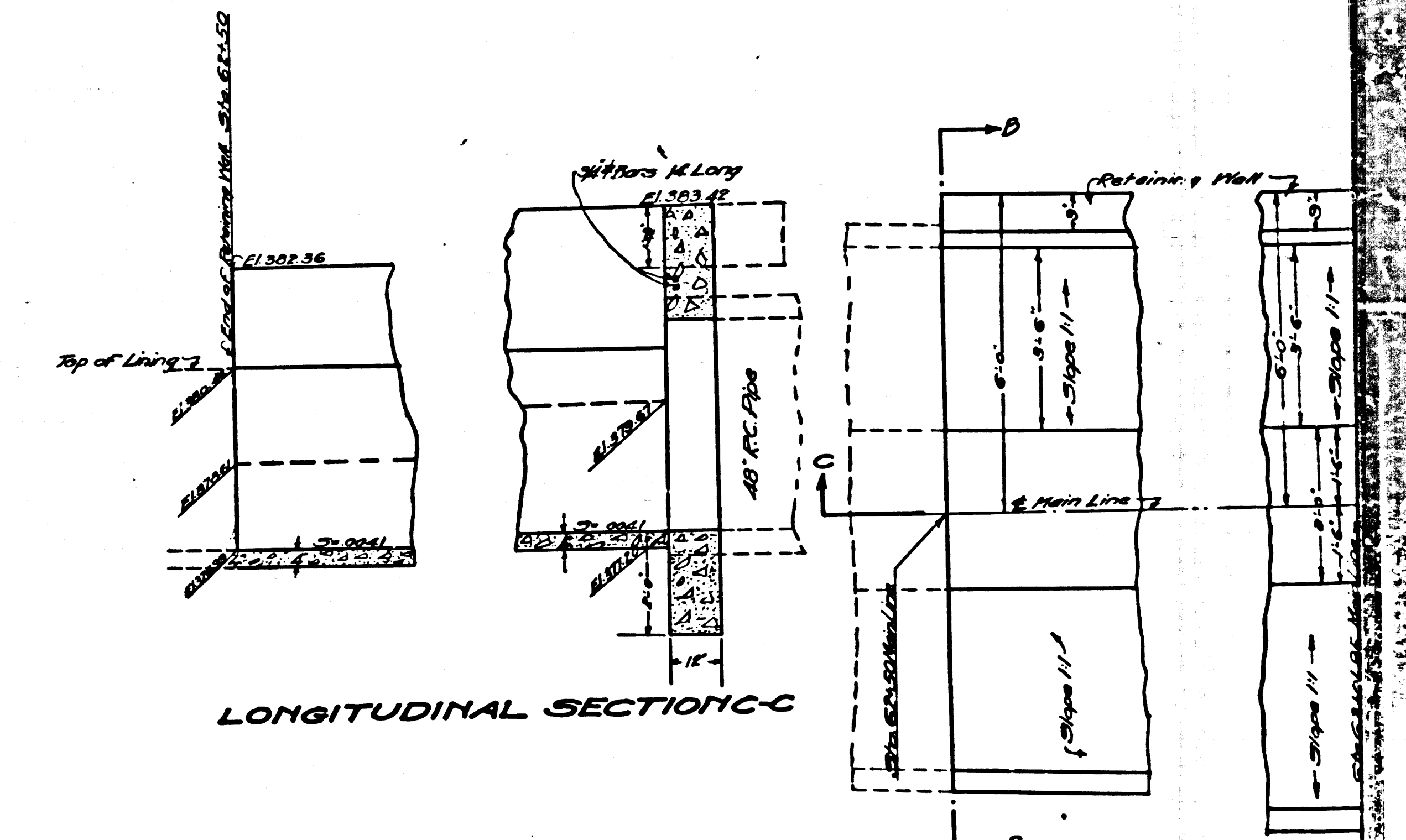


SECTION B-B

BOX CULVERT  
MAIN LINE STA. 7+59.60  
UNDER  
UNION PACIFIC RY.  
Scale: 3/8" = 1'



PLAN



LONGITUDINAL SECTION C-C

PLAN  
SPECIAL

CSB 1186-4  
A2 OF A4