

Revised August 1929 as Constructed
 J.L. Parlin
 R.I. Munstock

CONSTRUCTION REFERENCES
F. B. N. 374
L. B. N. 467

DRAINAGE DISTRICT IMPROVEMENT NO. 26

OF THE
 COUNTY OF LOS ANGELES

LAGUNA TRUNK

VERTICAL 1"=4.0'
 HORIZONTAL 1"=40.0' APRIL, 1928.

SHEET 2 OF 5 SHEETS
 J.E. ROCKHOLD-COUNTY SURVEYOR

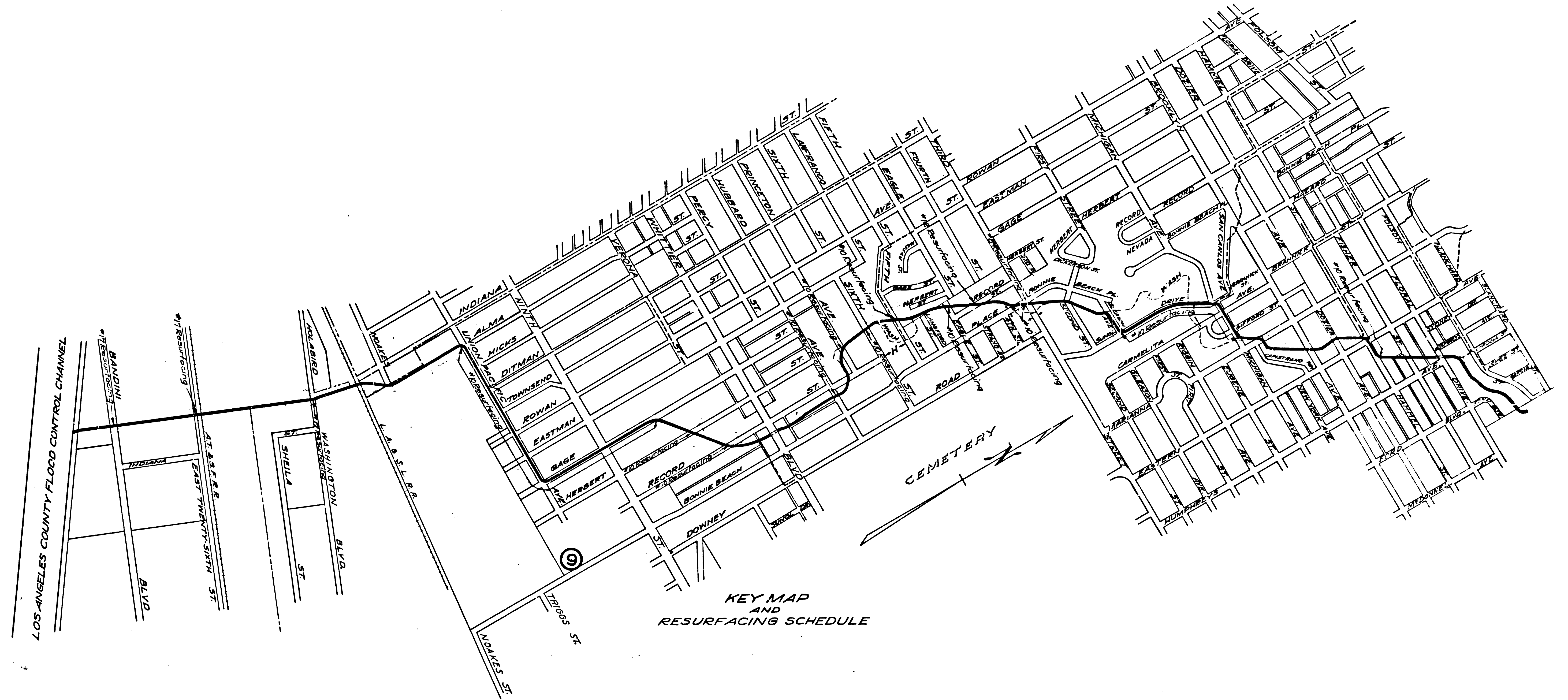
Submitted: *Francis Bates*
 Consulting Engineer.

Approved: *Alfred Jones*
 Chief Deputy.

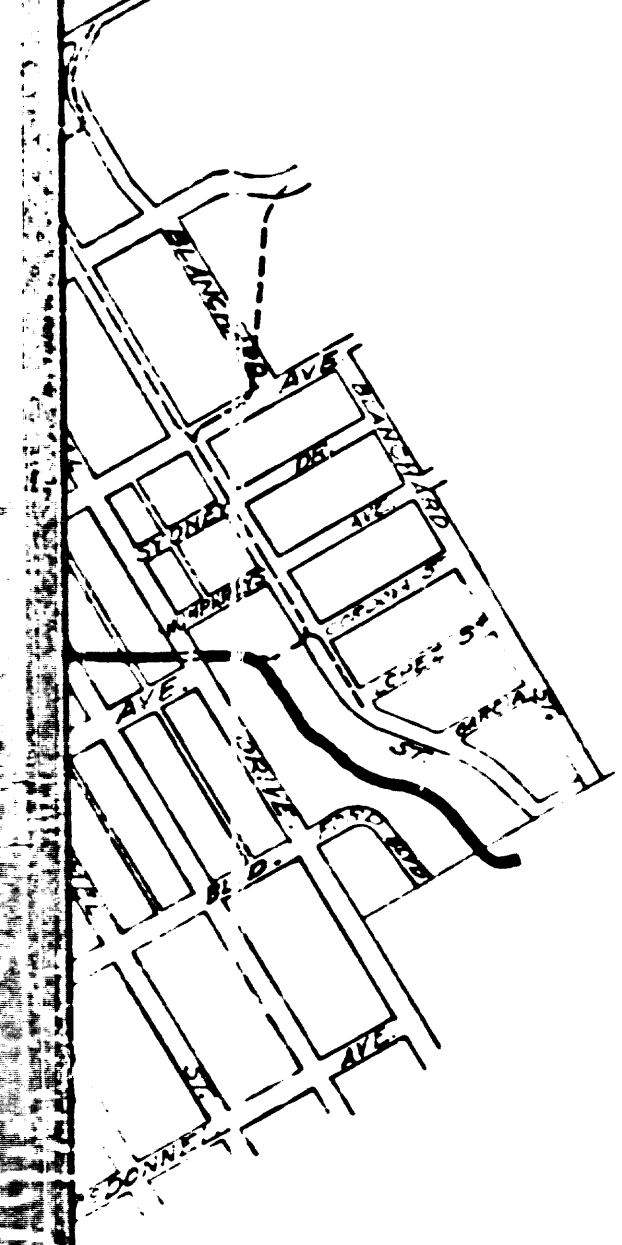
Approved as to form
 Everett W. Mattoon
 County Counsel

Approved: *J.E. Rockhold*
 County Surveyor

By: *William H. Kennedy*
 Deputy



CSB	1192-2
A1	OF A15

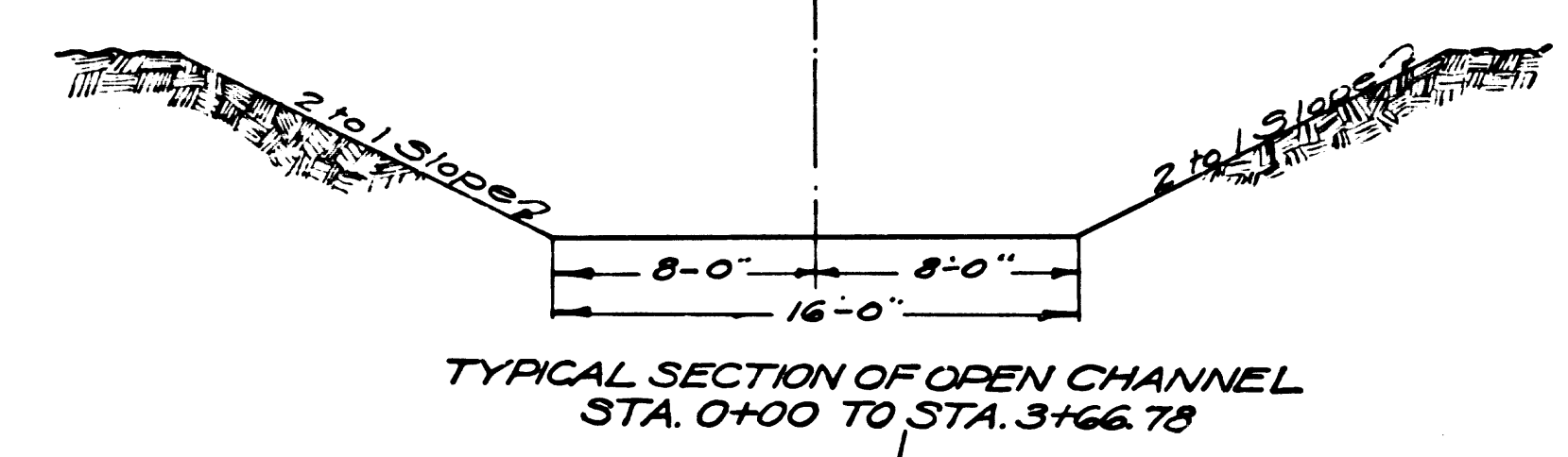
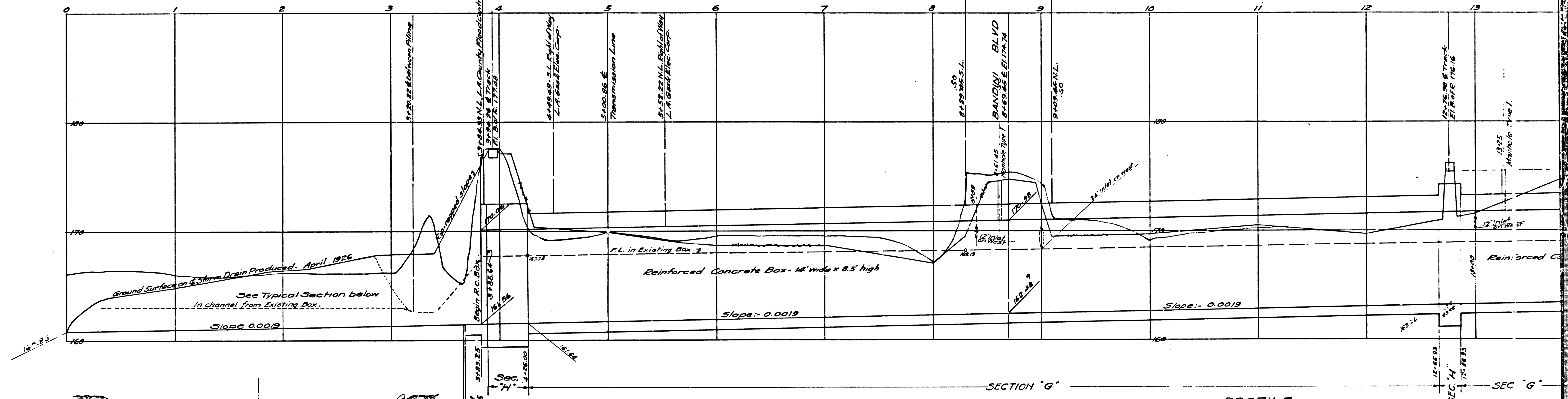


LOS ANGELES RIVER
LOS ANGELES COUNTY FLOOD CONTROL CHANNEL

IN RIGHT OF WAY

IN BANDINI
BLVD

IN R...



PROFILE
Horizontal Scale 1" = 40'
Vertical 1" = 4'

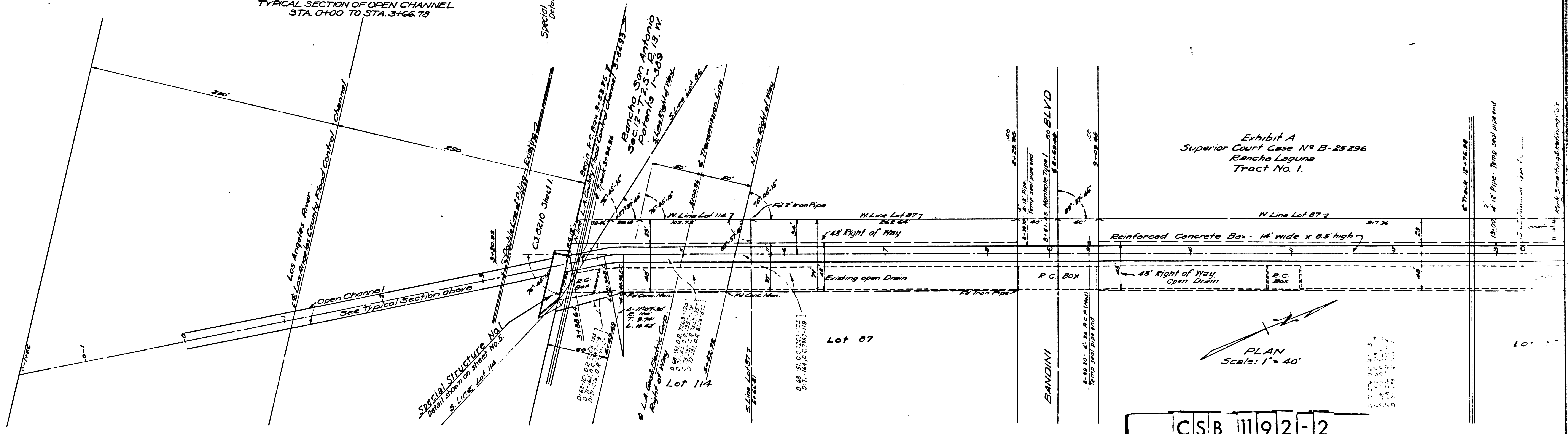
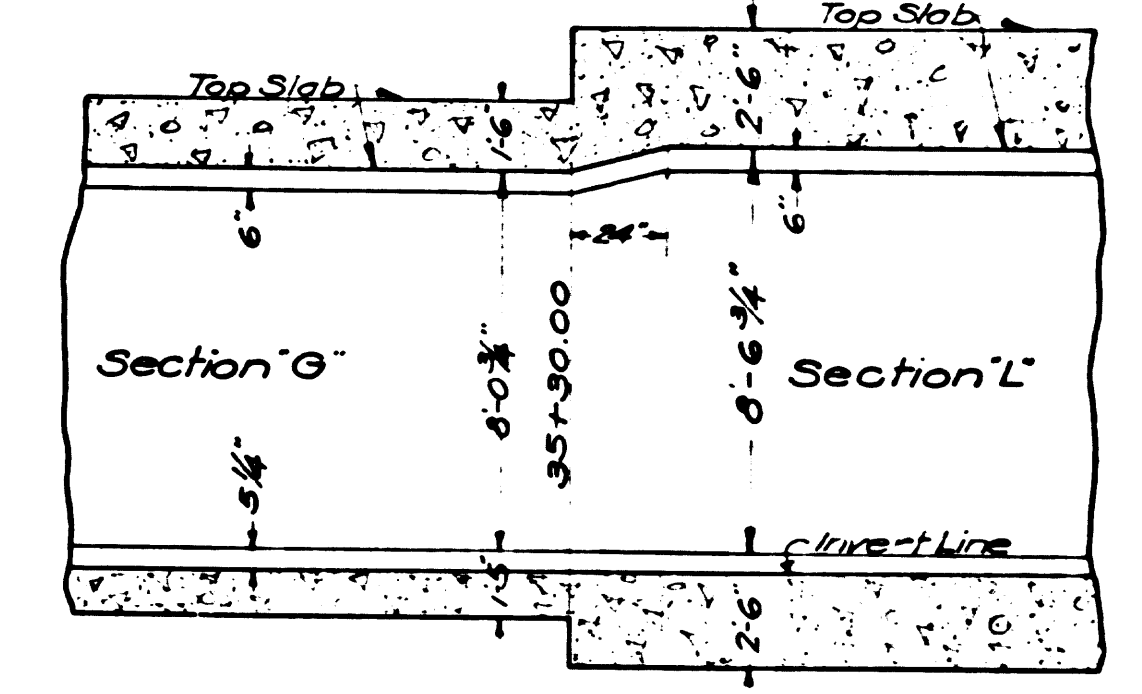
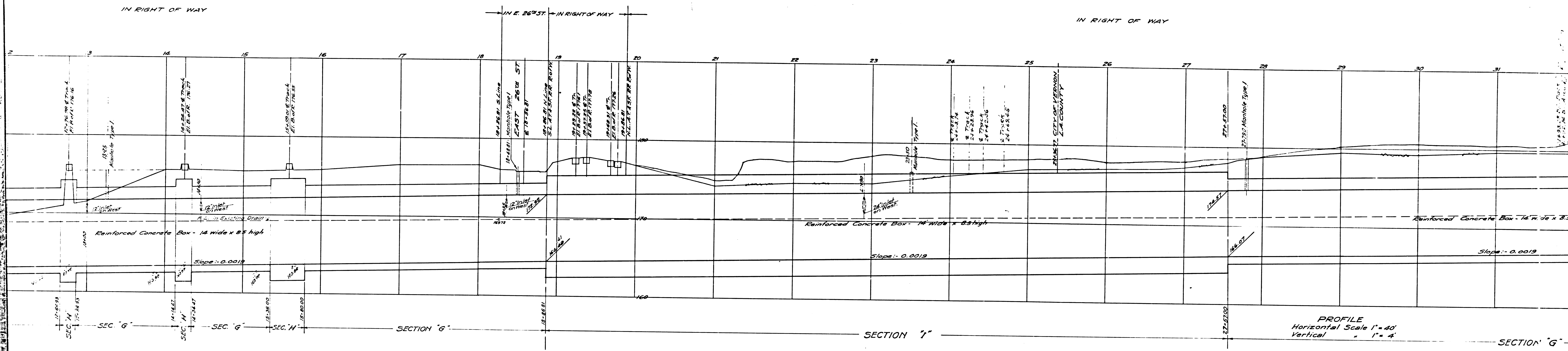


Exhibit A
Superior Court Case No. B-25296
Rancho Laguna
Tract No. 1.

CSB 1192-2
A2 OF A15



TYPICAL VERTICAL LONGITUDINAL SECTION
AT STA. 35+30.00
Showing 6"x24" fillet and 6"x6" fillet at junction
of top slabs of Sections L and G.

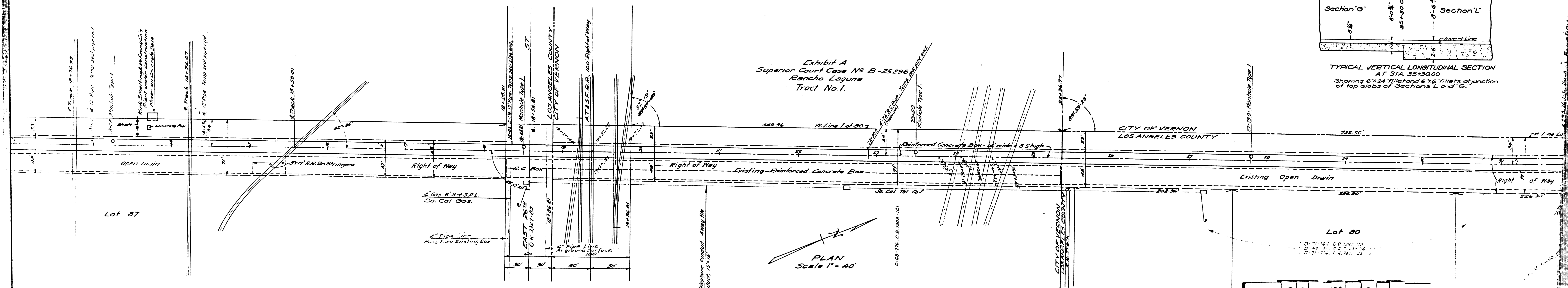
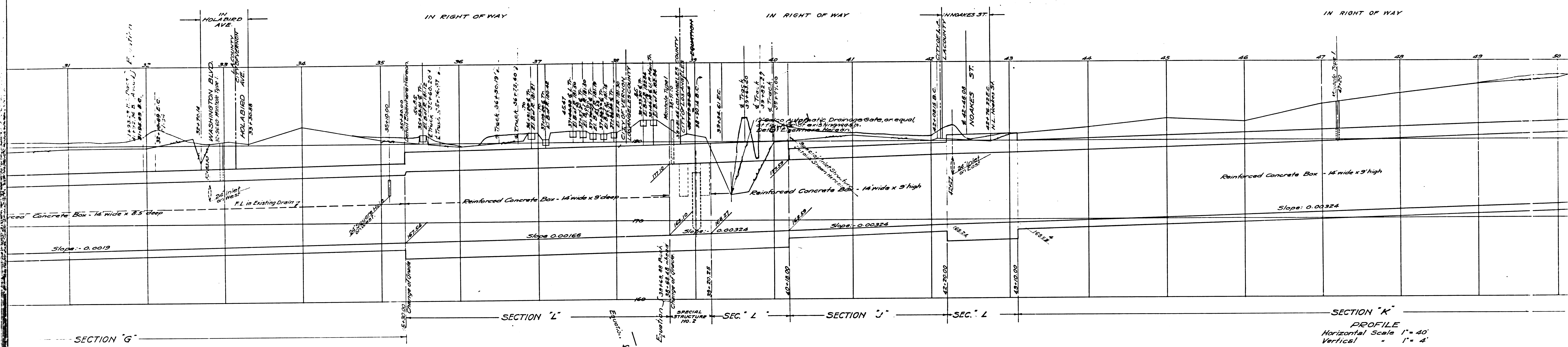
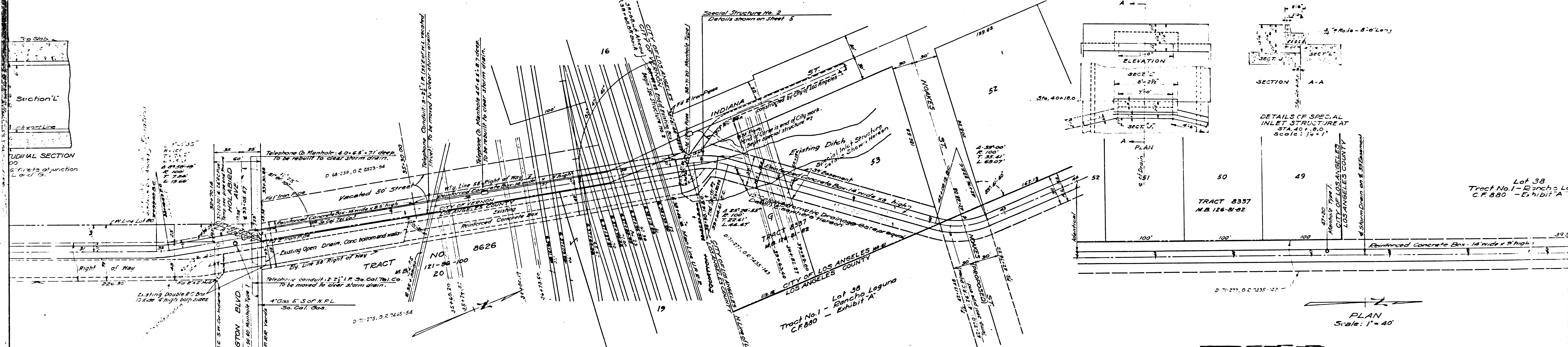


Exhibit A
Superior Court Case No B-25296
Rancho Laguna
Tract No. 1.

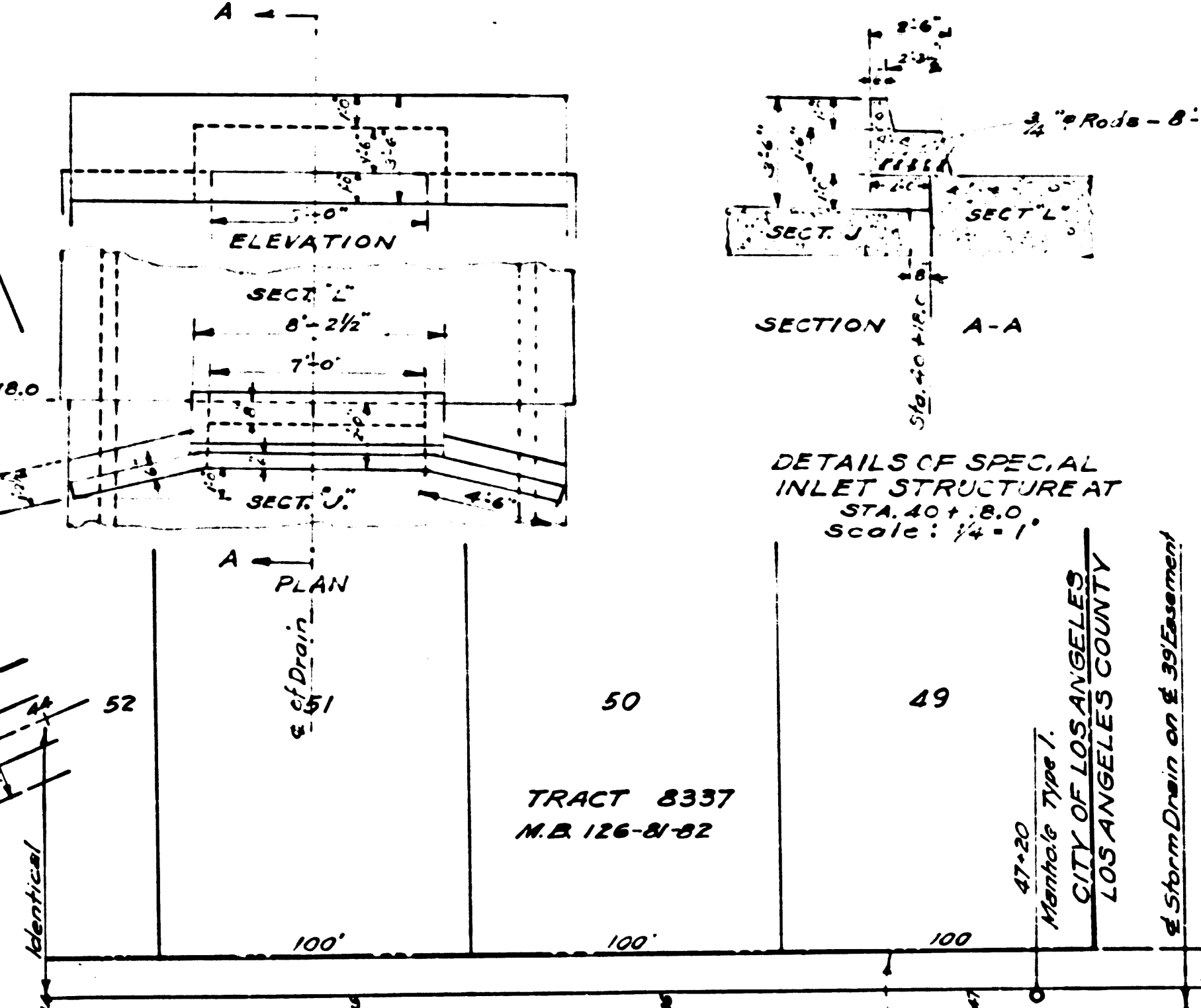
CSB 1192-2
A3 OF A15



PROFILE
Horizontal Scale 1" = 40'
Vertical Scale 1" = 4'



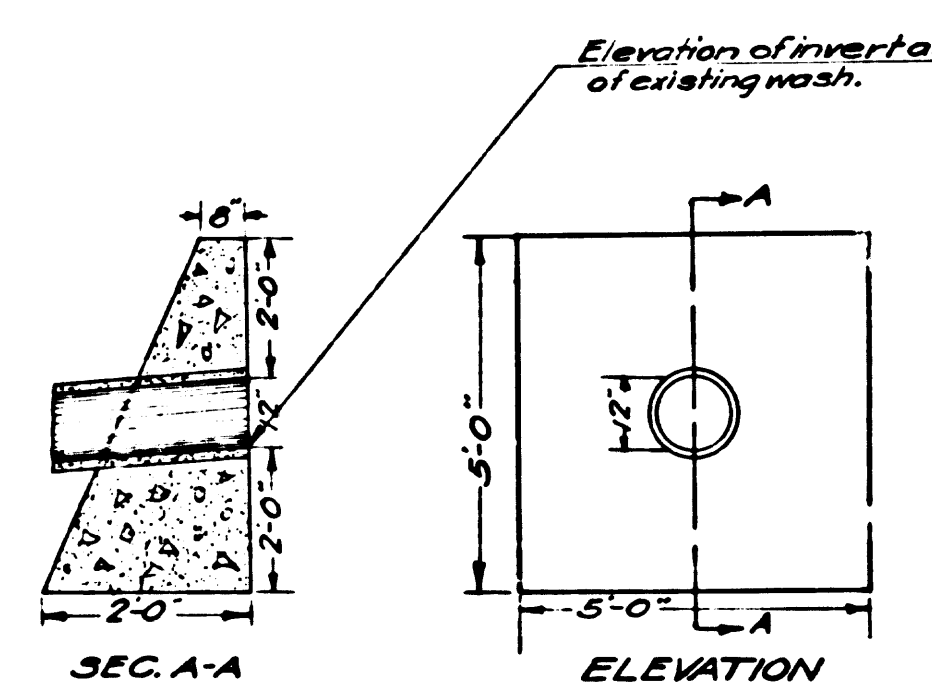
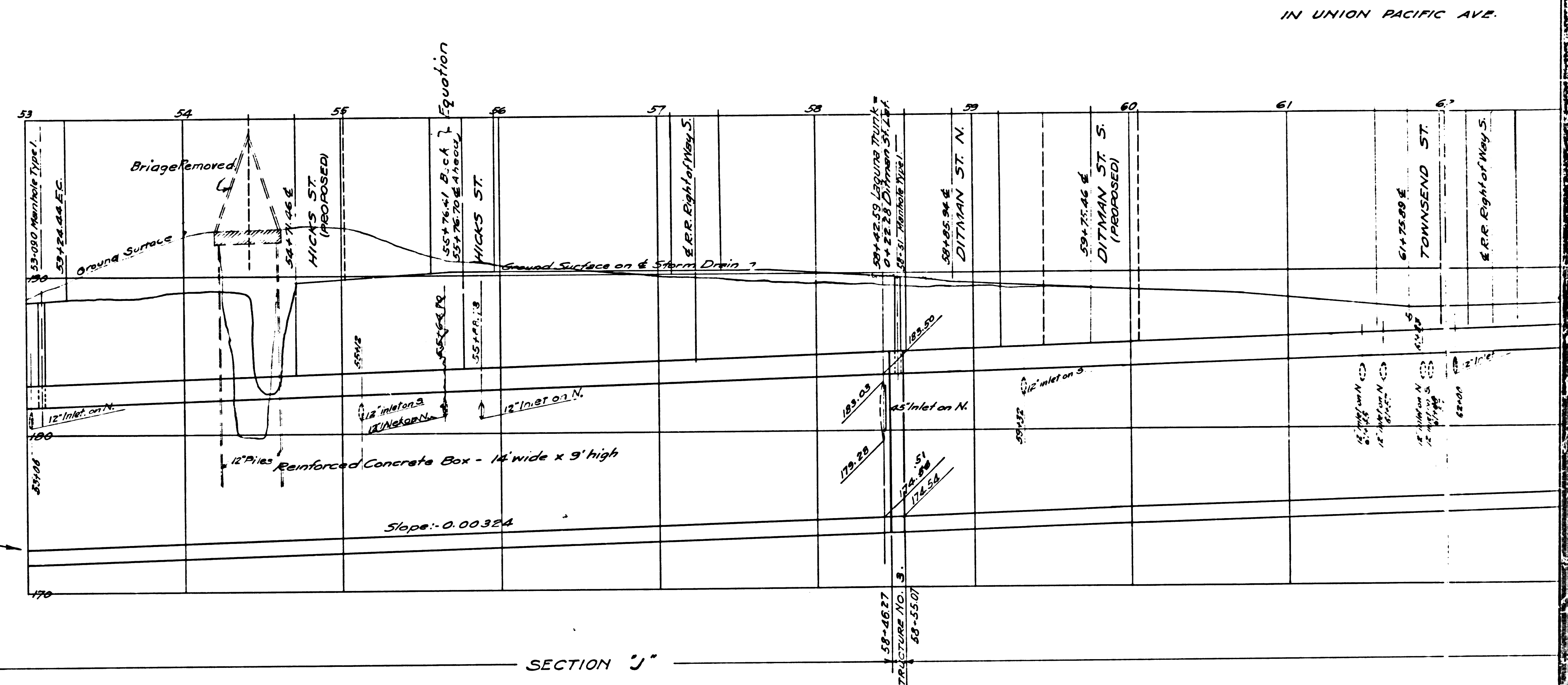
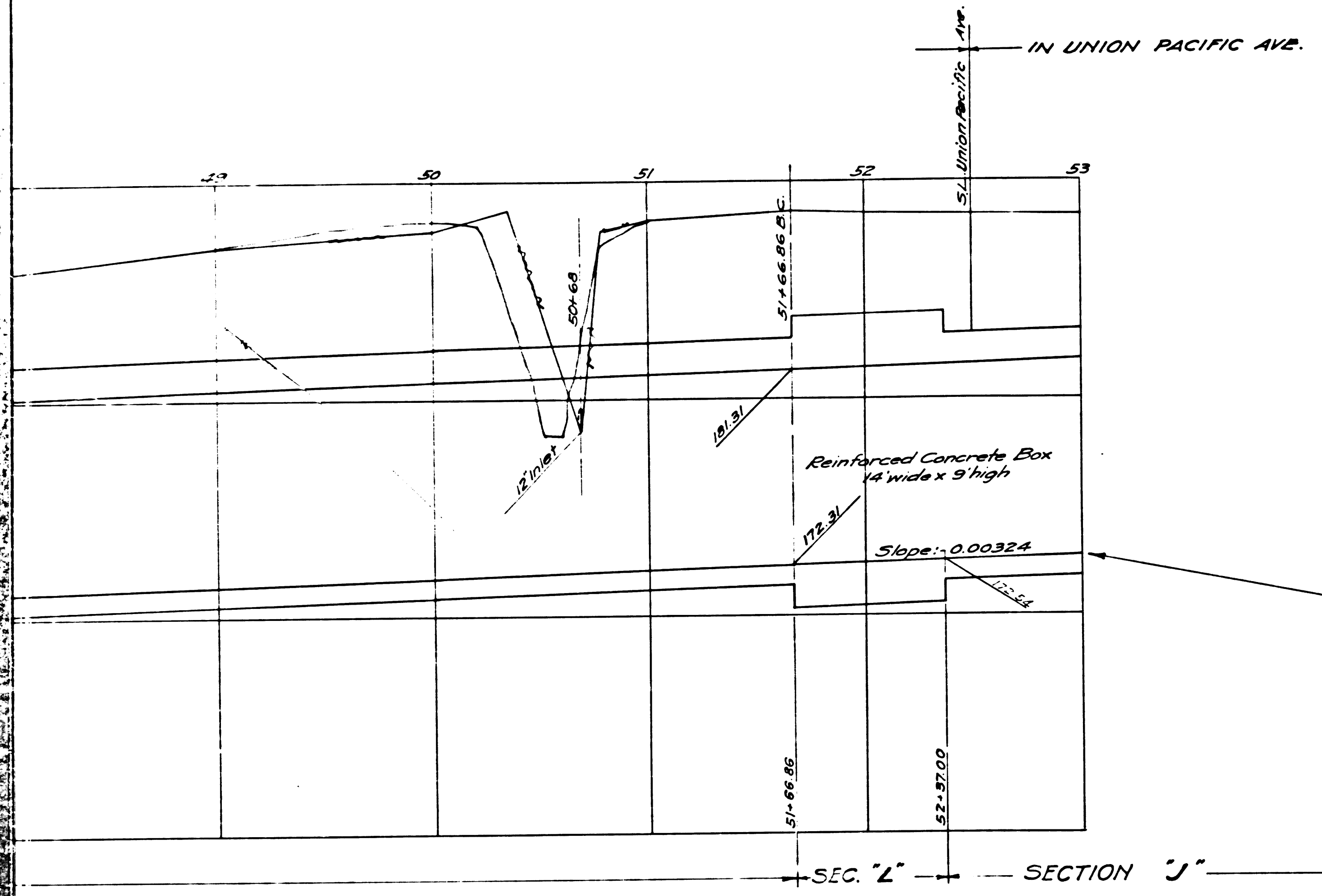
PLAN
Scale: 1" = 40'



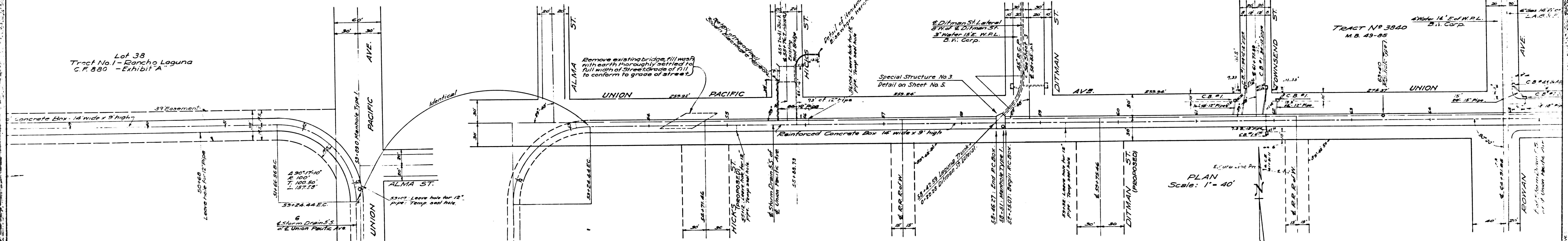
DETAILS OF SPECIAL INLET STRUCTURE AT STA. 40+8.00 Scale: 1/2" = 1'

CSB 1192-2
A4 OF A15

Lot 38
Tract No. 1 - Rancho Laguna
C.F. 880 - Exhibit A



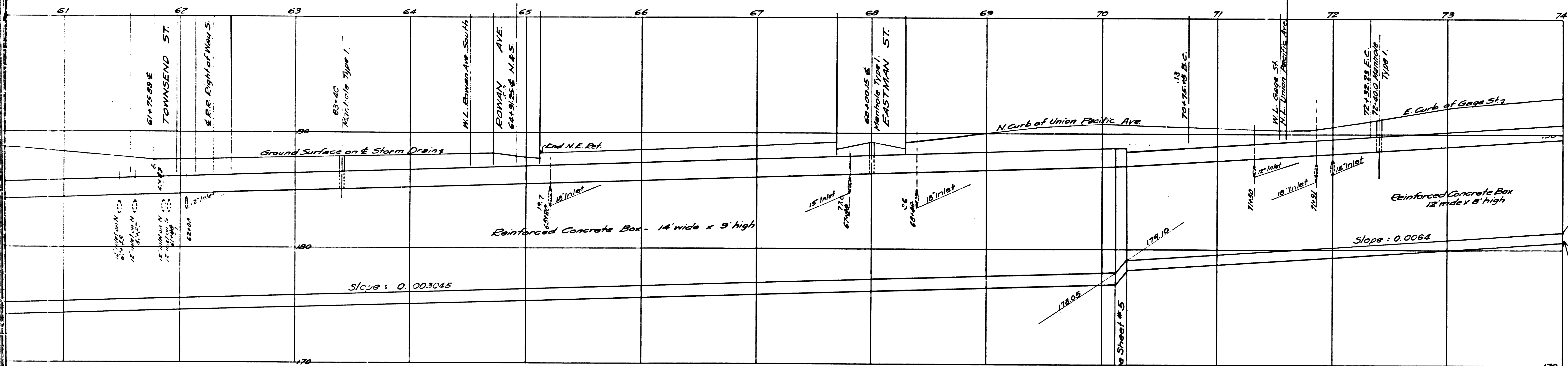
HEADWALL A.A. 73
AT STA. 55+64.70
& NEAR STA. 162+00
Class B Concrete



CSB 1192-2
A 5 OF A 15

IN UNION PACIFIC AVE.

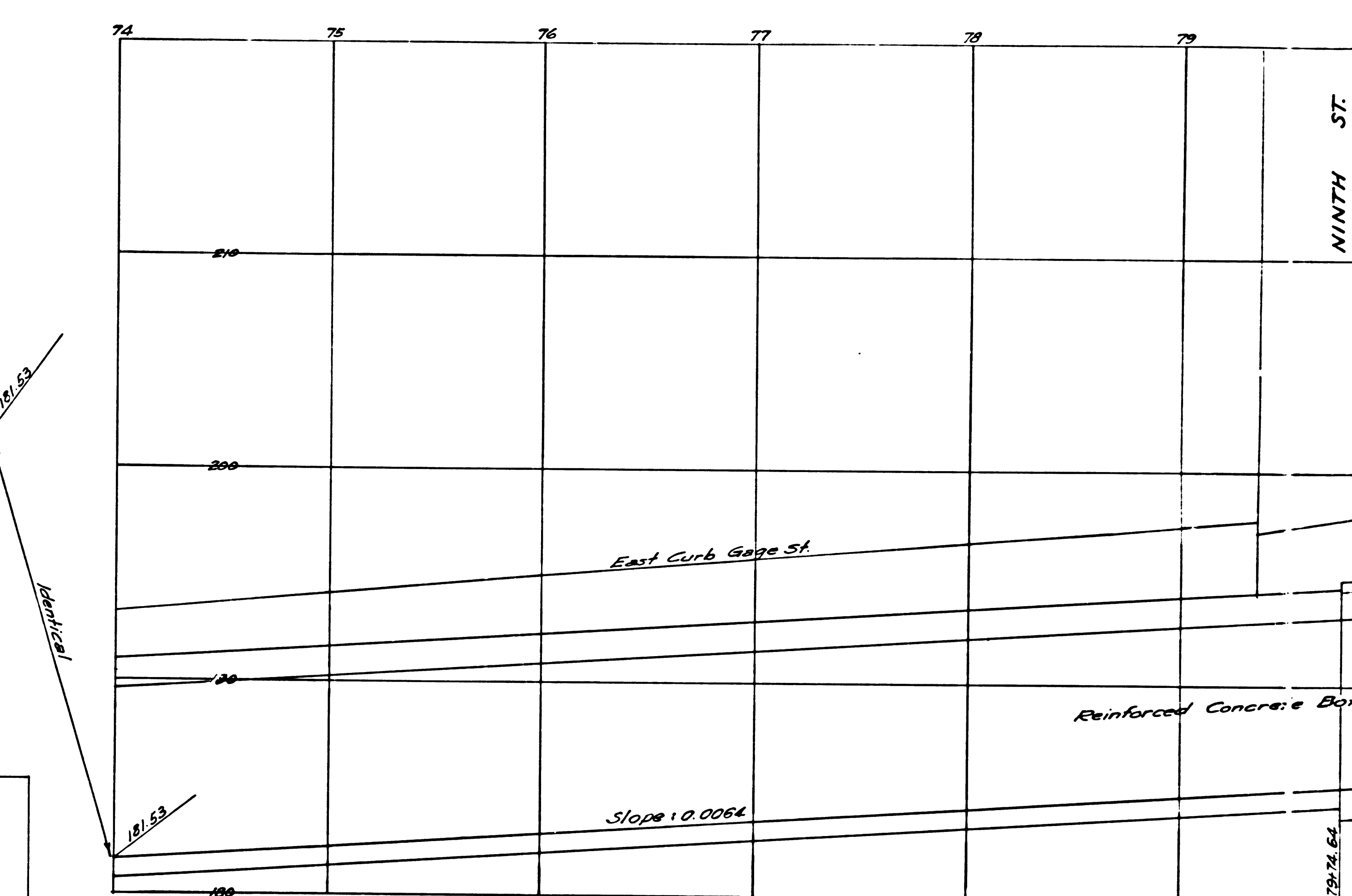
IN GAGE ST.



PROFILE
Horizontal Scale 1" = 40'
Vertical 1" = 4'

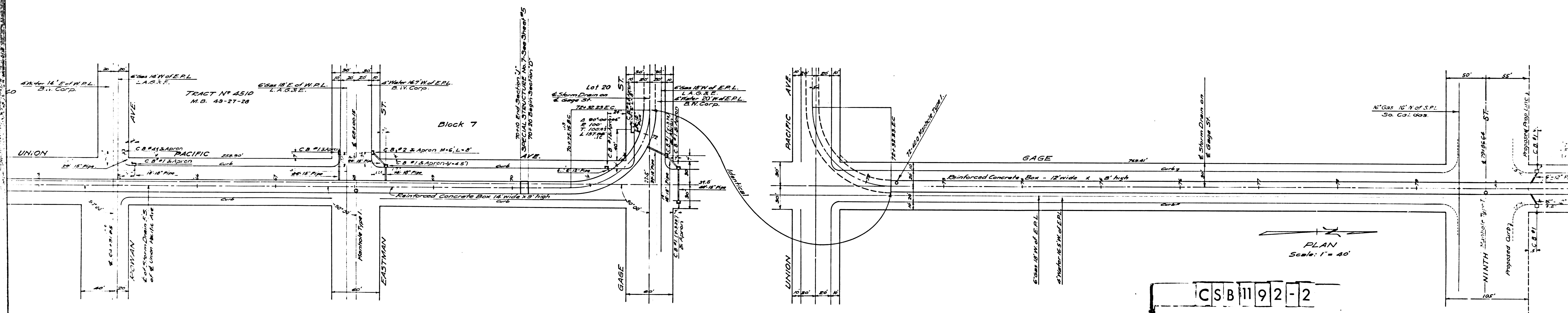
SECTION "J"

SECTION "D"



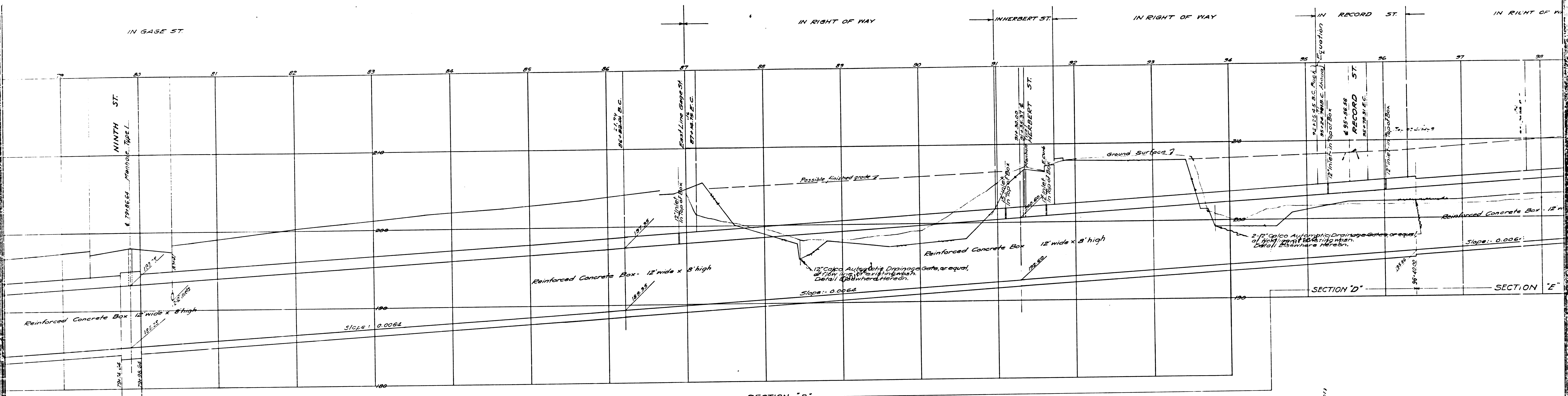
SECTION "D"

SECTION "F"

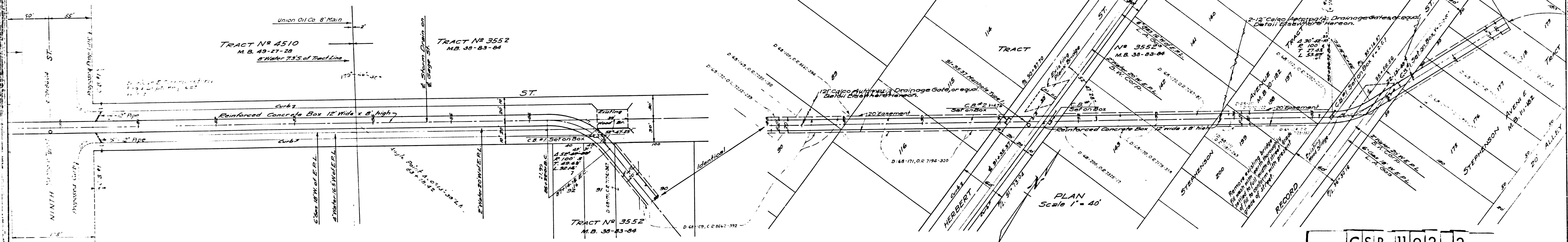


PLAN
Scale: 1" = 40'

CSB 1192-2
A6 OF A15

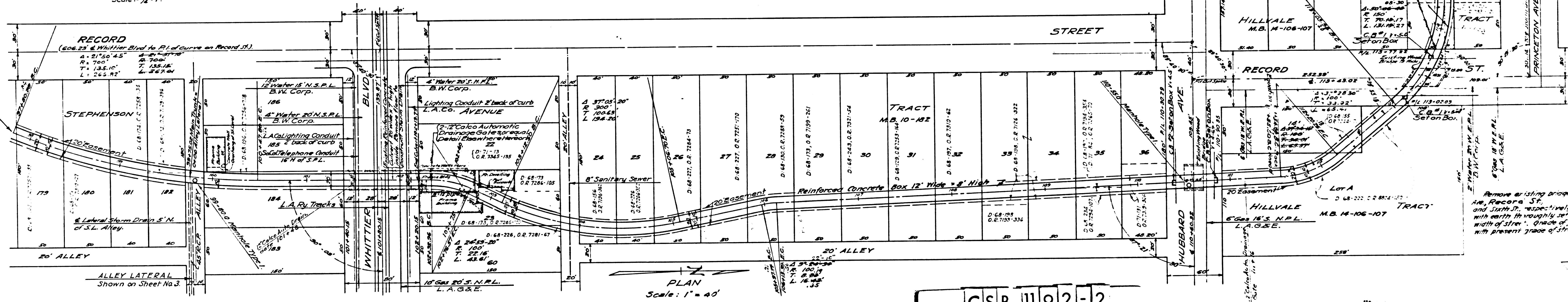
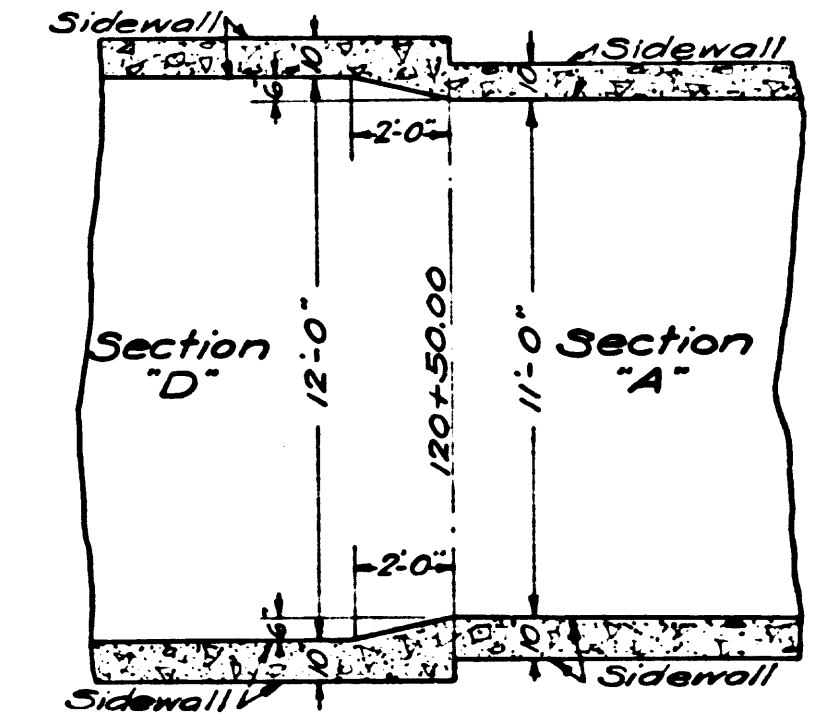
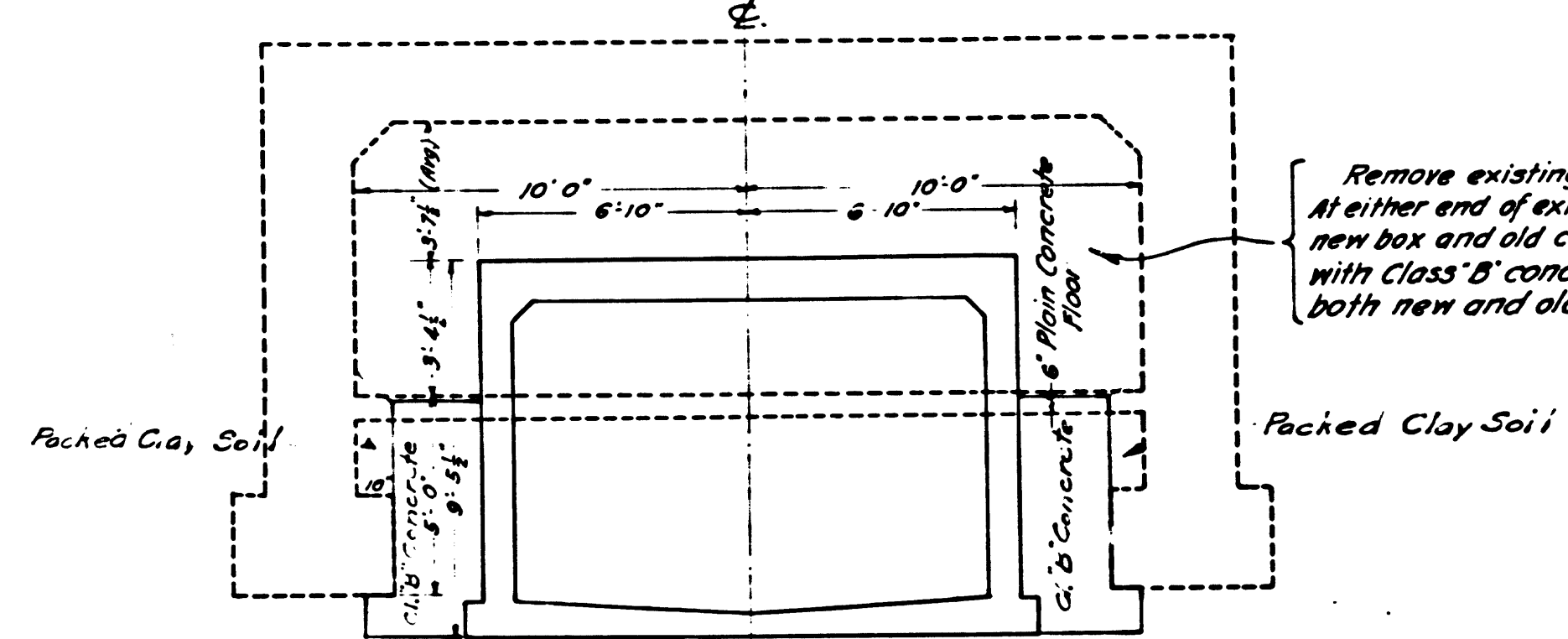
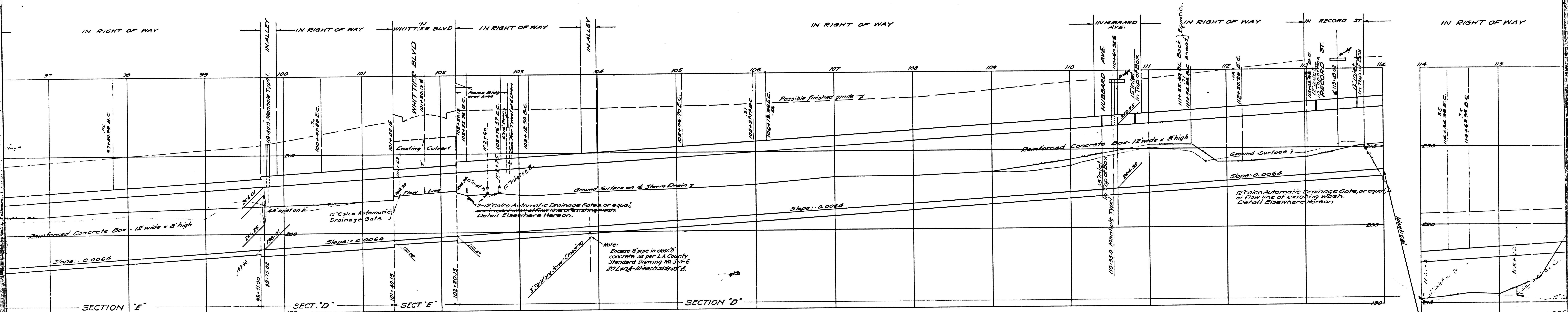


PROFILE
Horizontal Scale 1" = 40'
Vertical " = 1" = 4'

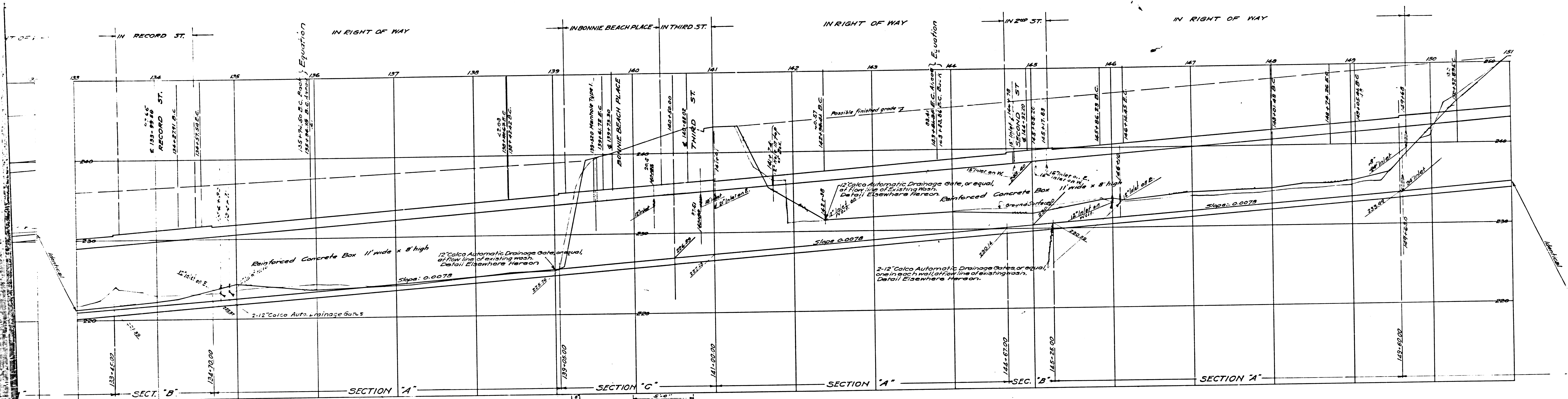


PLAN
Scale 1" = 40'

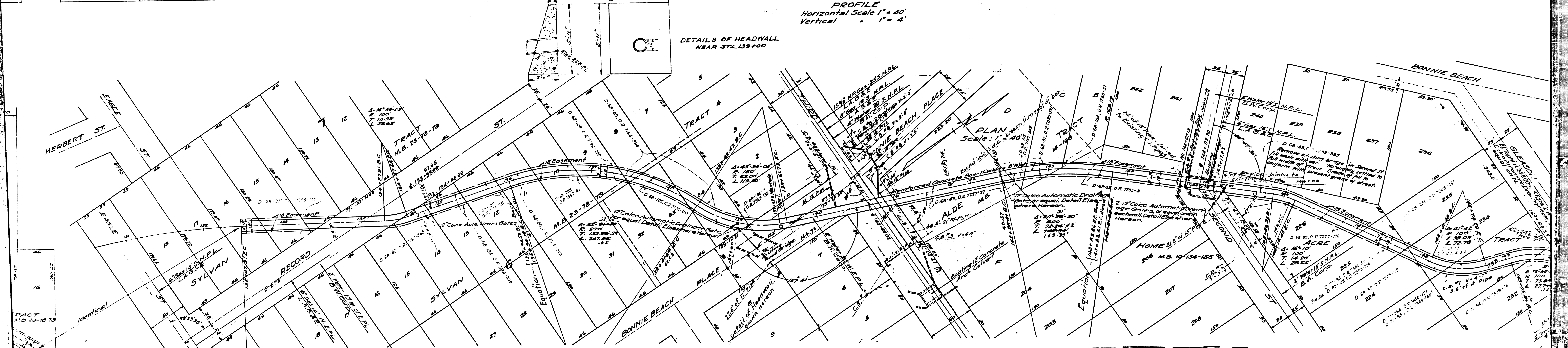
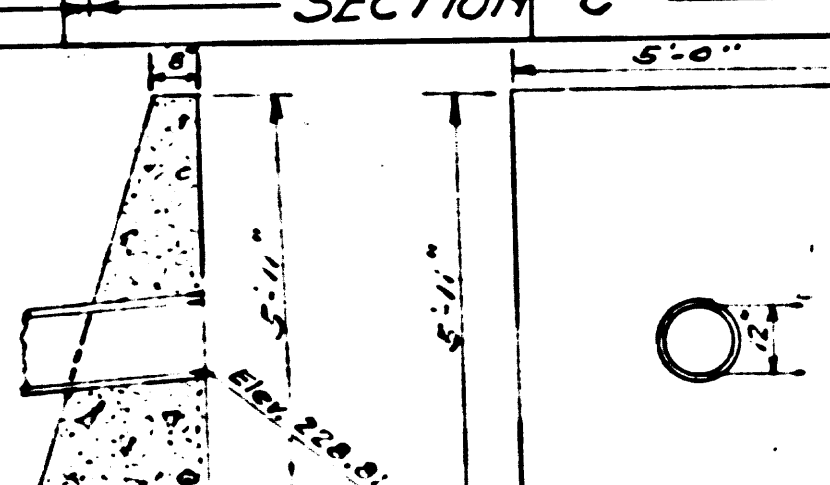
CSB 1192-2
A7 OF A15



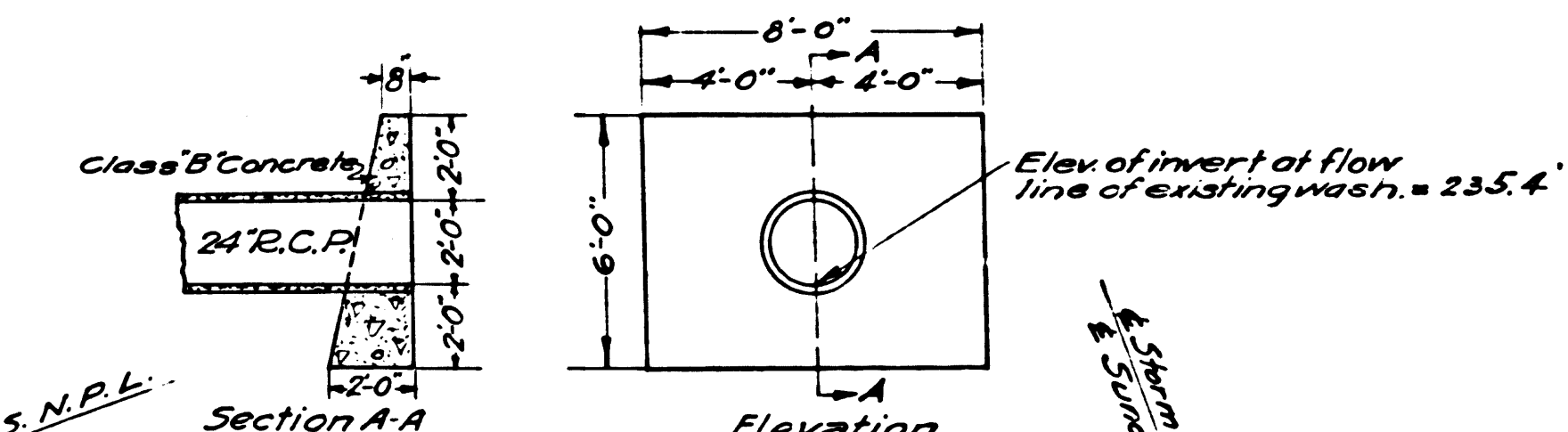
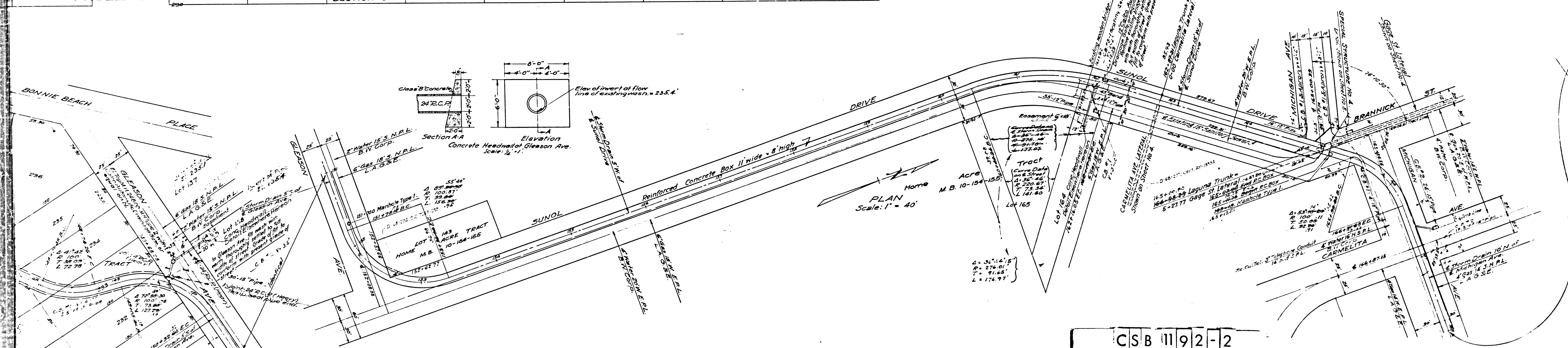
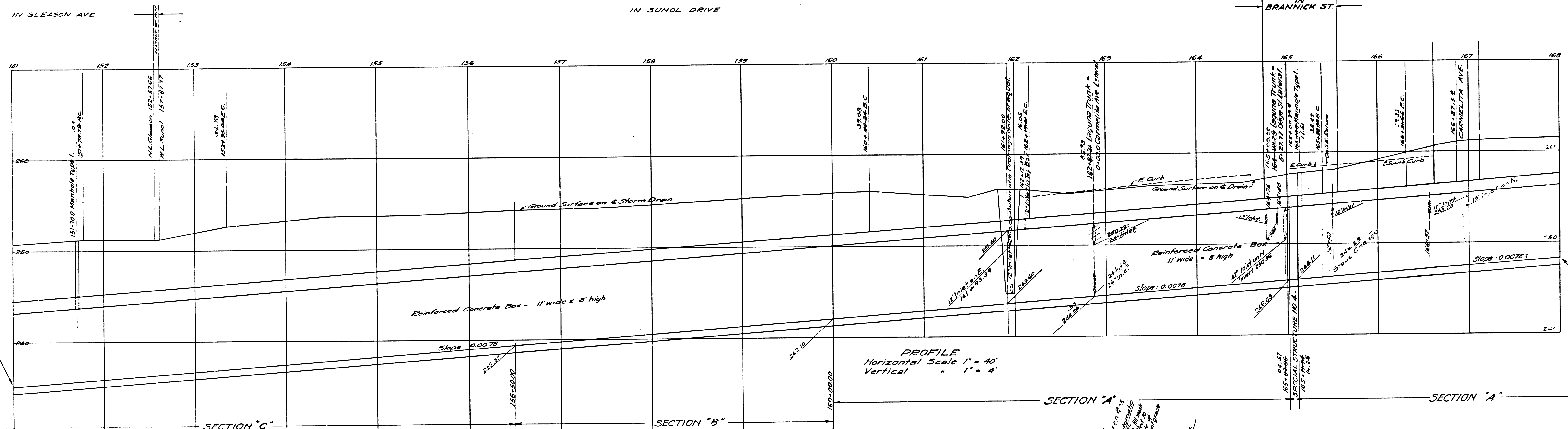
CSB 1192-2
 A8 OF A15



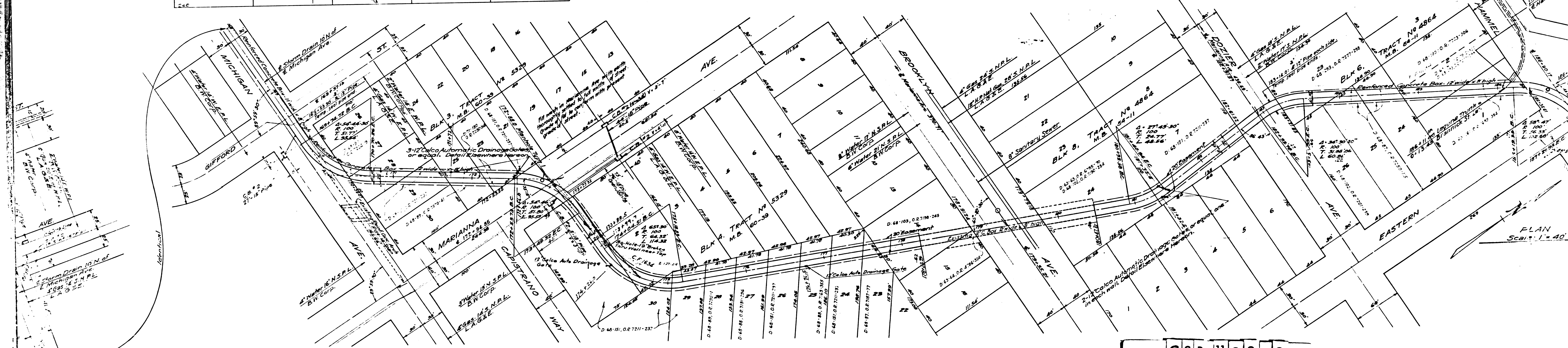
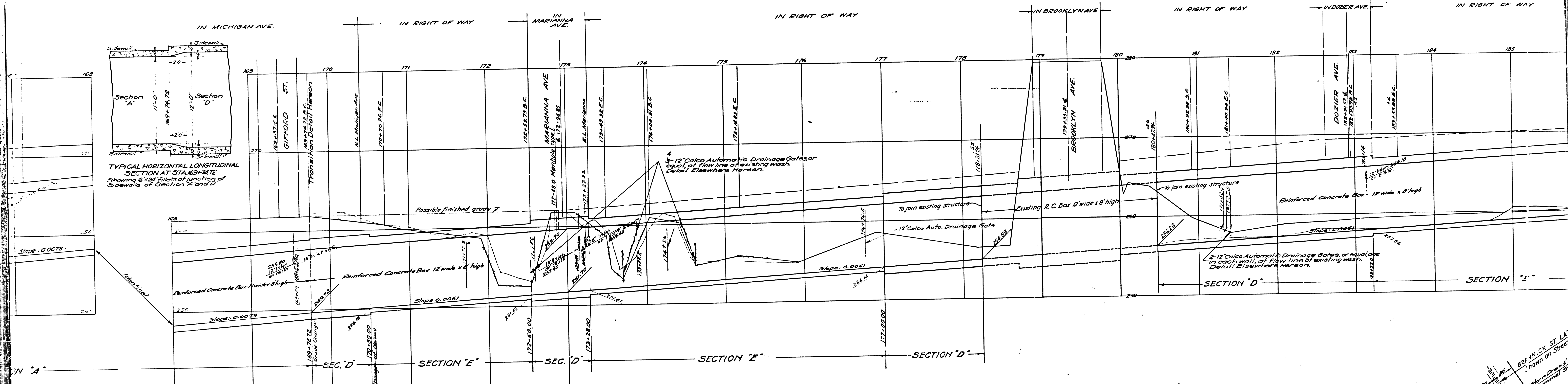
PROFILE
Horizontal Scale 1" = 40'
Vertical " 1" = 4'



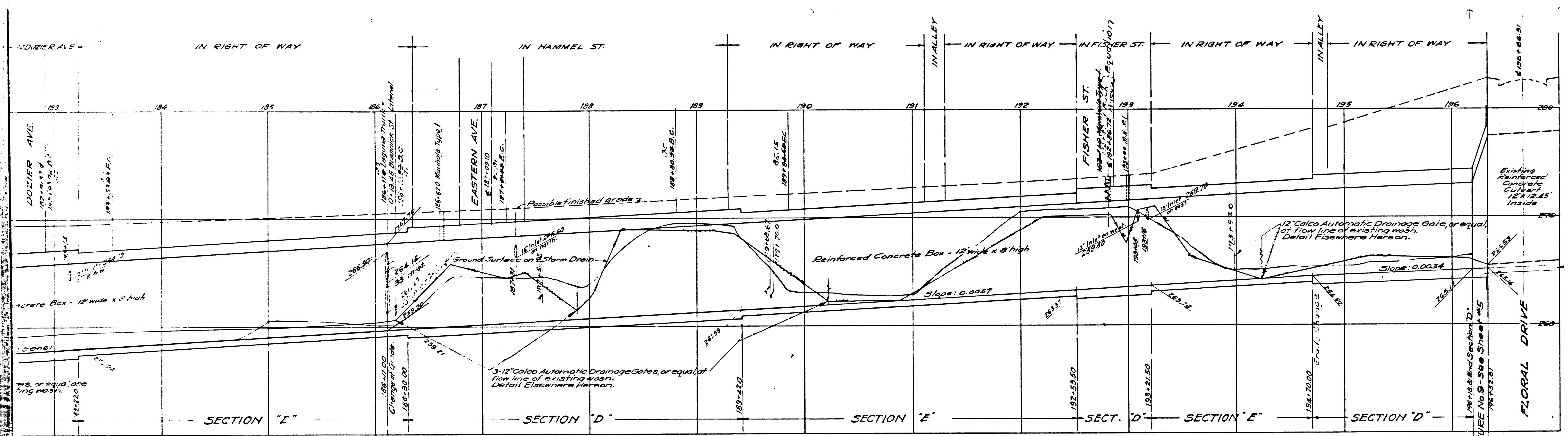
CSB 1192-2
A10 OF A15



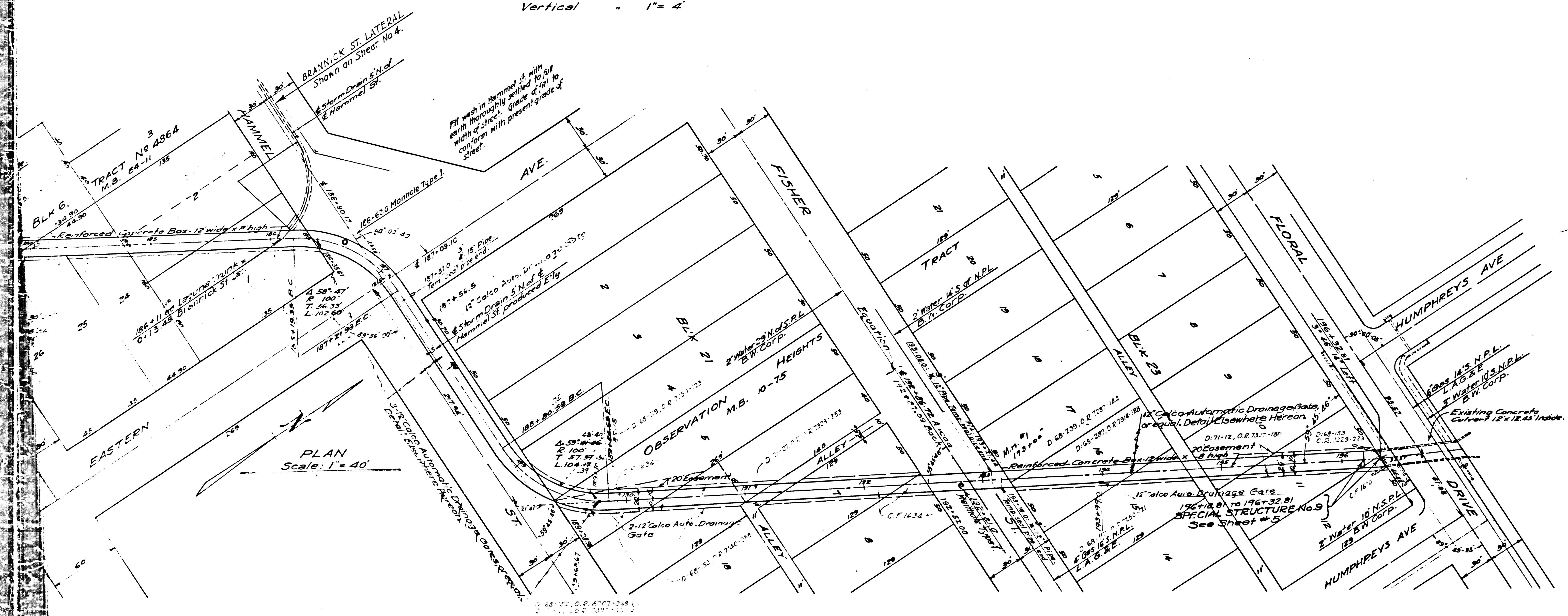
CSB 1192-2
A1 OF A15



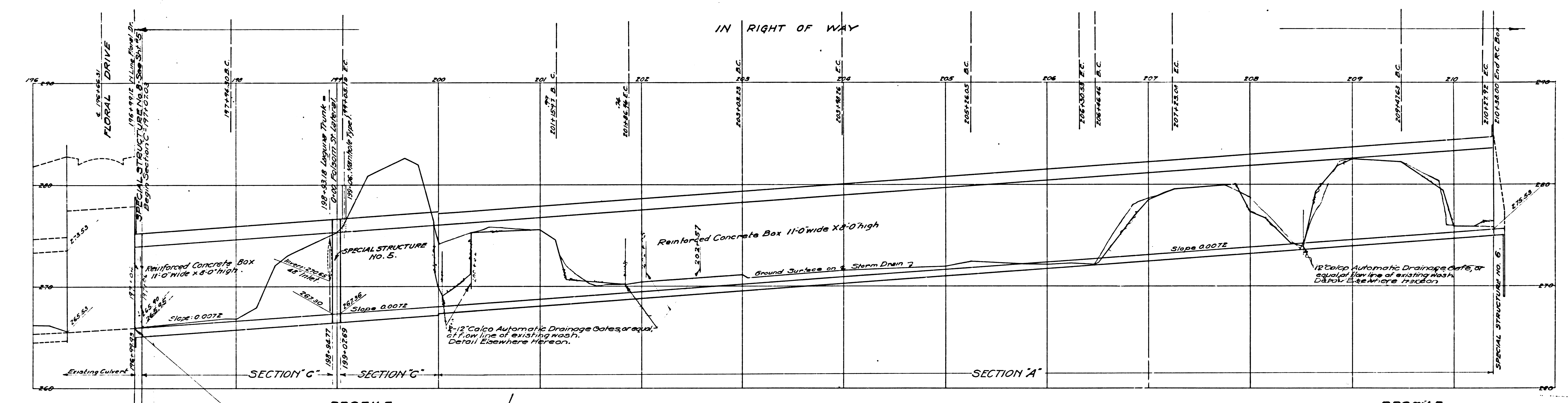
CSB 1192-2
A12 OF A15



PROFILE
Horizontal Scale 1" = 40'
Vertical " 1" = 4'



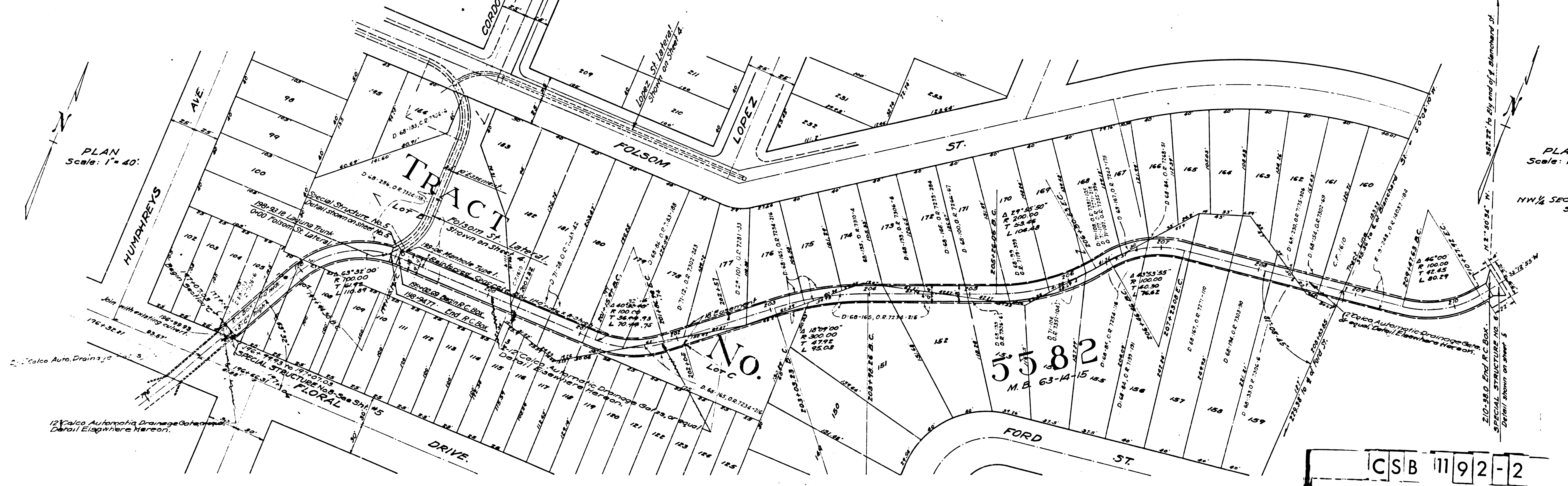
CSB 1192-2
A13 OF A15



12" Calco Automatic Drainage Gates, or equal, of flow line of existing wash. Detail Elsewhere Hereon.

PROFILE
Horizontal Scale 1" = 40'
Vertical 1" = 4'

PROFILE
Horizontal Scale 1" = 40'
Vertical 1" = 4'

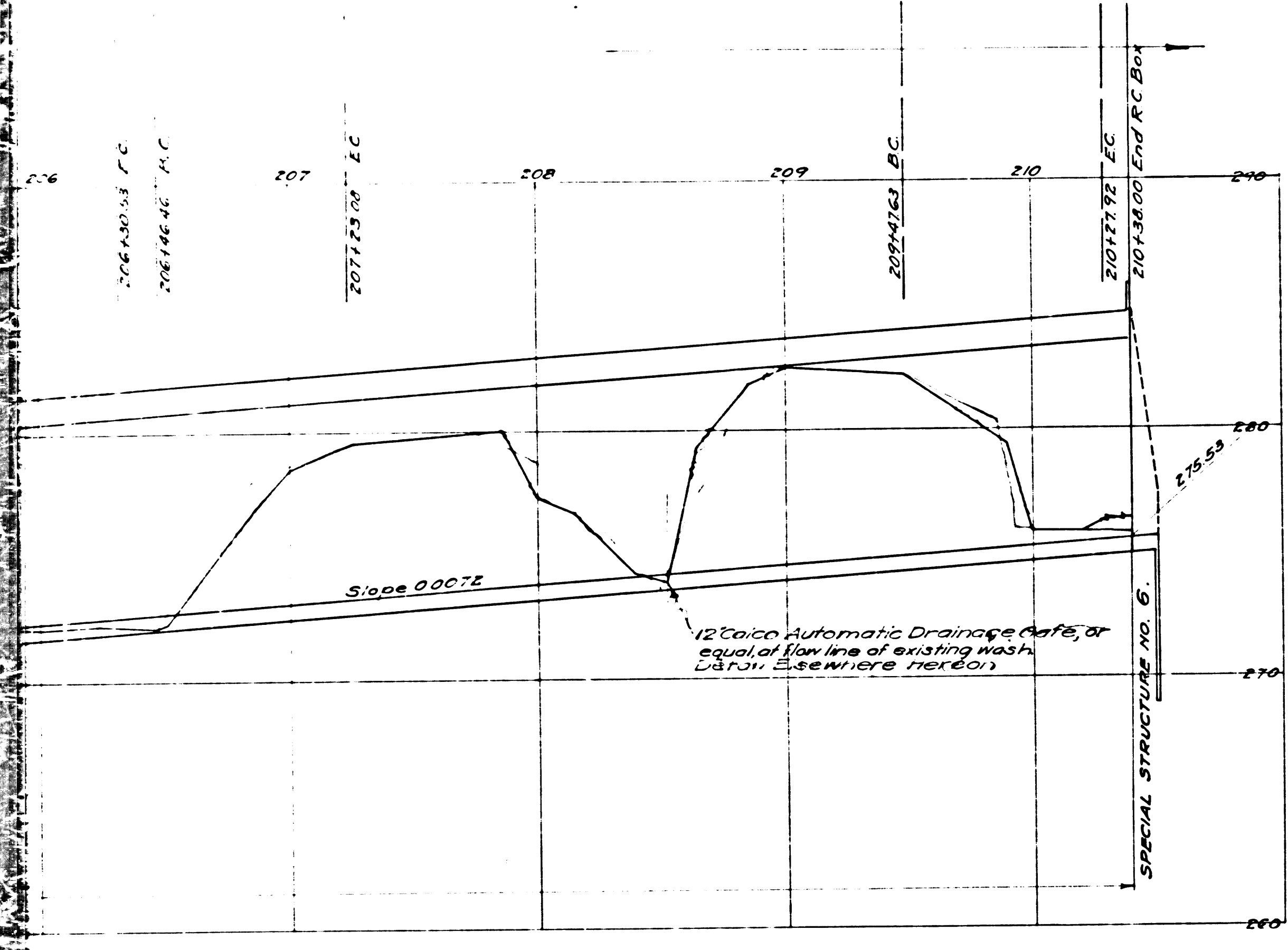


PLAN
Scale: 1" = 40'

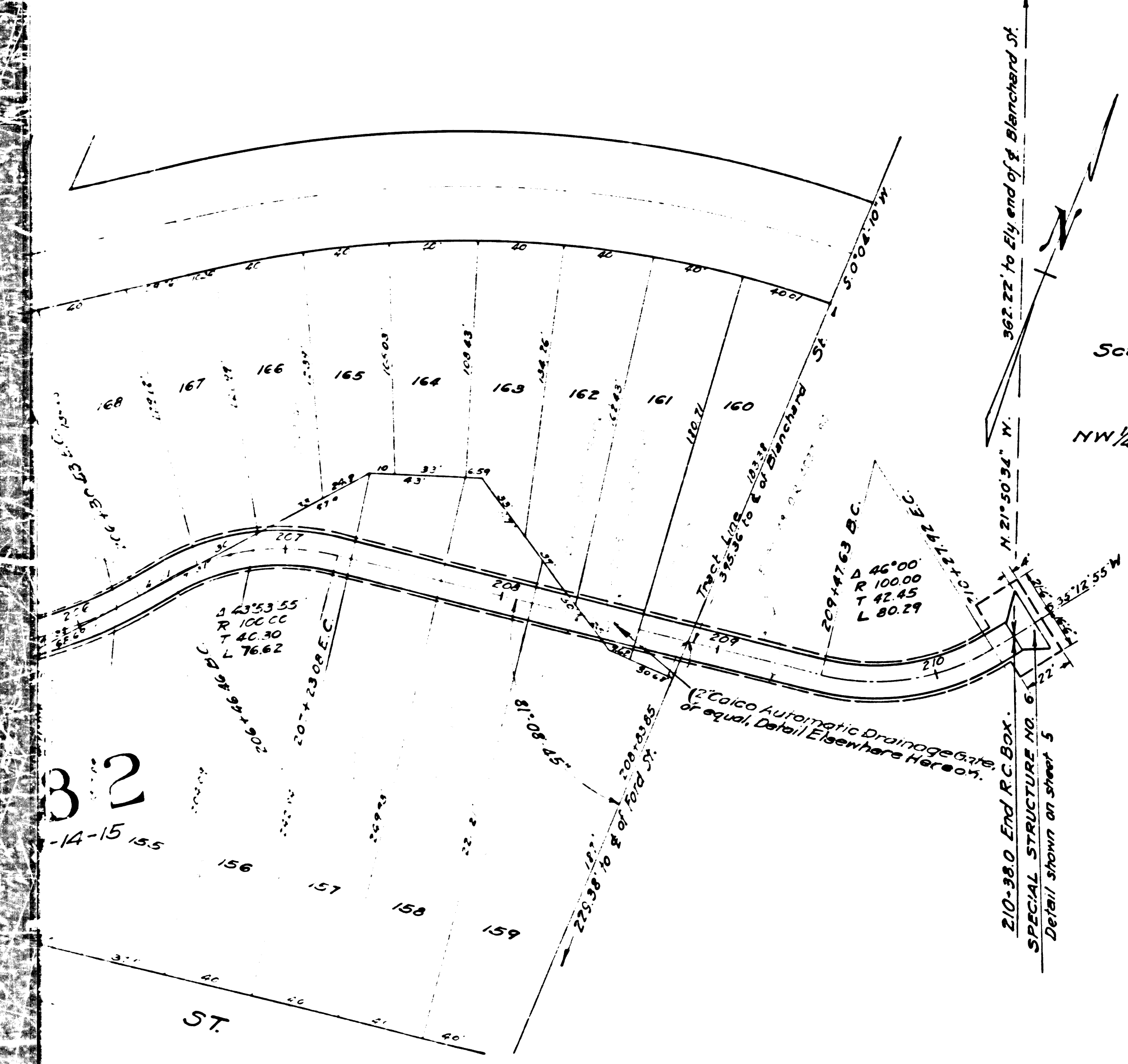
PLAN
Scale: 1" = 40'

NW 1/4 SEC. 32, T.13. R.12 W.
S.B.S. & M.

CSB 111 92-2
A14 OF A15

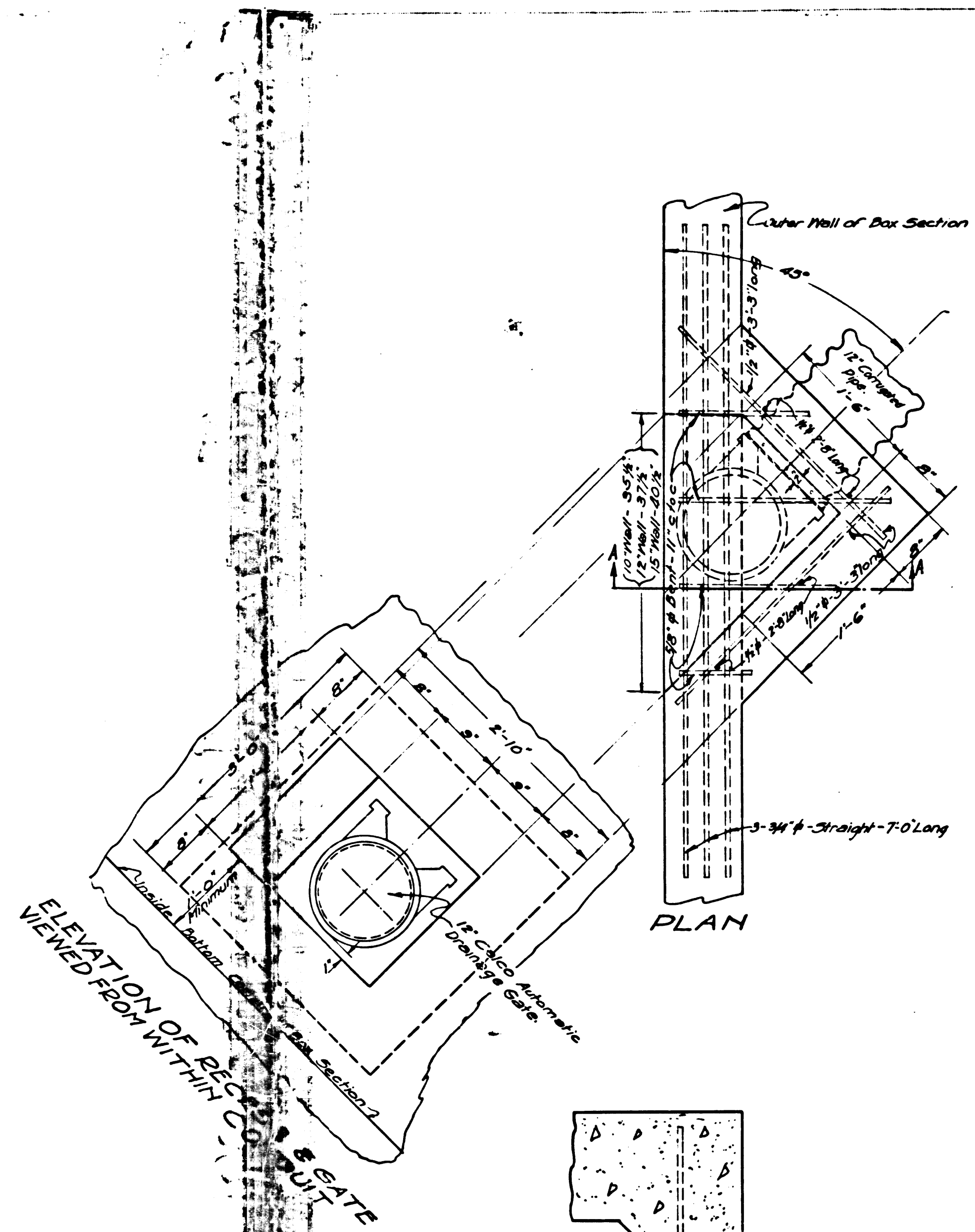


PROFILE
Horizontal Scale 1" = 40'
Vertical 1" = 4'

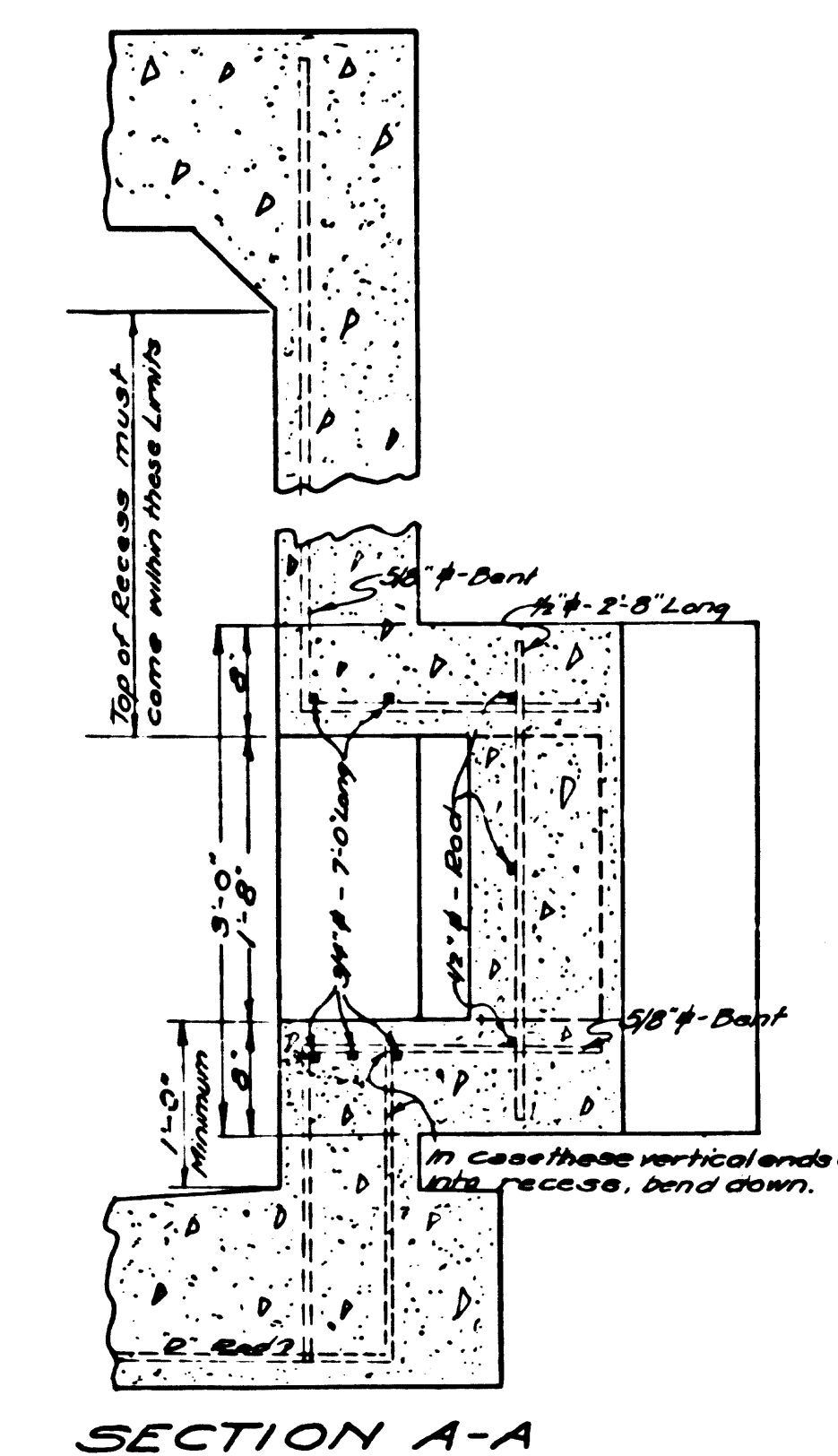


PLAN
Scale: 1" = 40'

NW 1/4 SEC. 32, T. 15. R. 12 W.
S.B.S.M.



ELEVATION OF BOX SECTION
VIEWED FROM WITHIN CURB CUT



TYPICAL INSTALLATION OF
12" CALCO AUTOMATIC DRAINAGE
GATE IN SIDE WALL OF BOX SECTION
Scale: 1" = 1'-0"

Notes:-
Elevations are in feet above U.S. Mean Sea Level Datum.
Stations of inlets and junctions refer to the intersections of the center lines of the inlets with the center line of the main drain.
Elevations of inlets refer to the flow lines of the inlets projected on their "ground" to the vertical plane thru the center line of the main drain.
For details of standard structures see Standard Plans unless otherwise specified and what the plain cover pipe. All slabs to be one length of pipe unless otherwise specified. All temporary seats of slab ends shall be Standard plant.
All Catch Basins Nos. 1, 2, 3 and 4 shall be built with minimum curb face of 10" and minimum depression of opening of 4" below gutter grade, unless otherwise specified. All Catch Basins No. 5 shall be built with depression of curb face of 2" below gutter grade unless otherwise specified.
Catch basins "Set on Box" shall be built directly on top slab. Dimension "V" on catch basins, which is depth from top of curb to bottom of catch basin at inlet, in such cases is variable.

Revised August, 1929 as Constructed
J. L. Farth.
R. I. Hunstuck

CONSTRUCTION REFERENCES
F. B. N. 374
L. B. N. 467

DRAINAGE DISTRICT IMPROVEMENT NO. 26

OF THE
COUNTY OF LOS ANGELES

LAGUNA TRUNK

VERTICAL 1" = 4'
HORIZONTAL 1" = 40'
APRIL 1928

SHEET 2 OF 5 SHEETS
J. E. ROCKHOLD-COUNTY SURVEYOR

Submitted: *Harold Bates* Consulting Engineer.
Approved: *Alfred Jones* Chief Deputy.

Approved as to Form
Everett W. Maffron
County Counsel
By: *William Kennedy* Deputy.
Approved: *J. E. Rockhold* County Surveyor.

Revised: June 18, 1928.

CSB 1192-2
1A15 OF A15