

NOTE:

Elevations are in feet above U.S.G.S. or mean Sea Level Datum.

Elevations of all Lateral Inlets refer to the intersection of the invert of the Lateral with the inside face of the main drain or structure.

Stations of all Connector Pipe Inlets refer to the intersection of the center line of the connector pipe with the inside face of the main drain or structure. Branch connector pipes in radially to pipe drains where structures are not designated.

Connector Pipes in Box Sections shall be laid in conjunction with Junction Structure N°4 (Standard Dc39) unless otherwise specified by the Engineer of Construction.

All Pipes not otherwise specified shall be Standard Strength Cement Concrete Pipe.

For Structures marked SPEC. STR. N°, and SECTION, see structural details on Special Structure and Box Section Sheet.

All Structures not otherwise specified are Standard Structures See details on Standard Plans.

For details of cement concrete for Reinforced Concrete Arch Section see Standard Dc 39.

For details of reinforcing steel for Reinforced Concrete Arch Section see Standard Dc 60.

Catch Basins shall be built with a curb face of 10' or more which shall include a minimum depression at opening of 4' below gutter grade unless otherwise specified.

Elevations shown of catch basins refer to top of proposed curb, at center line of basin if one elevation is given or at ends of basin if two elevations are given.

Sanitary Sewers crossing over or with a clearance of 150 feet or less under Storm Drain shall be constructed or reconstructed as shown on Standard Dc 55 except as otherwise specified on detail Sewer Plan.

**COUNTY HOSPITAL
DRAINAGE SYSTEM**
OF THE COUNTY OF LOS ANGELES, CALIFORNIA.
PLAN AND PROFILE OF
COUNTY HOSPITAL TRUNK

SHEET 4 OF 5 SHEETS
SCALE VERT. 1"=4'
HORIZ. 1"=40'
JUNE, 1940
ALFRED JONES - COUNTY ENGINEER

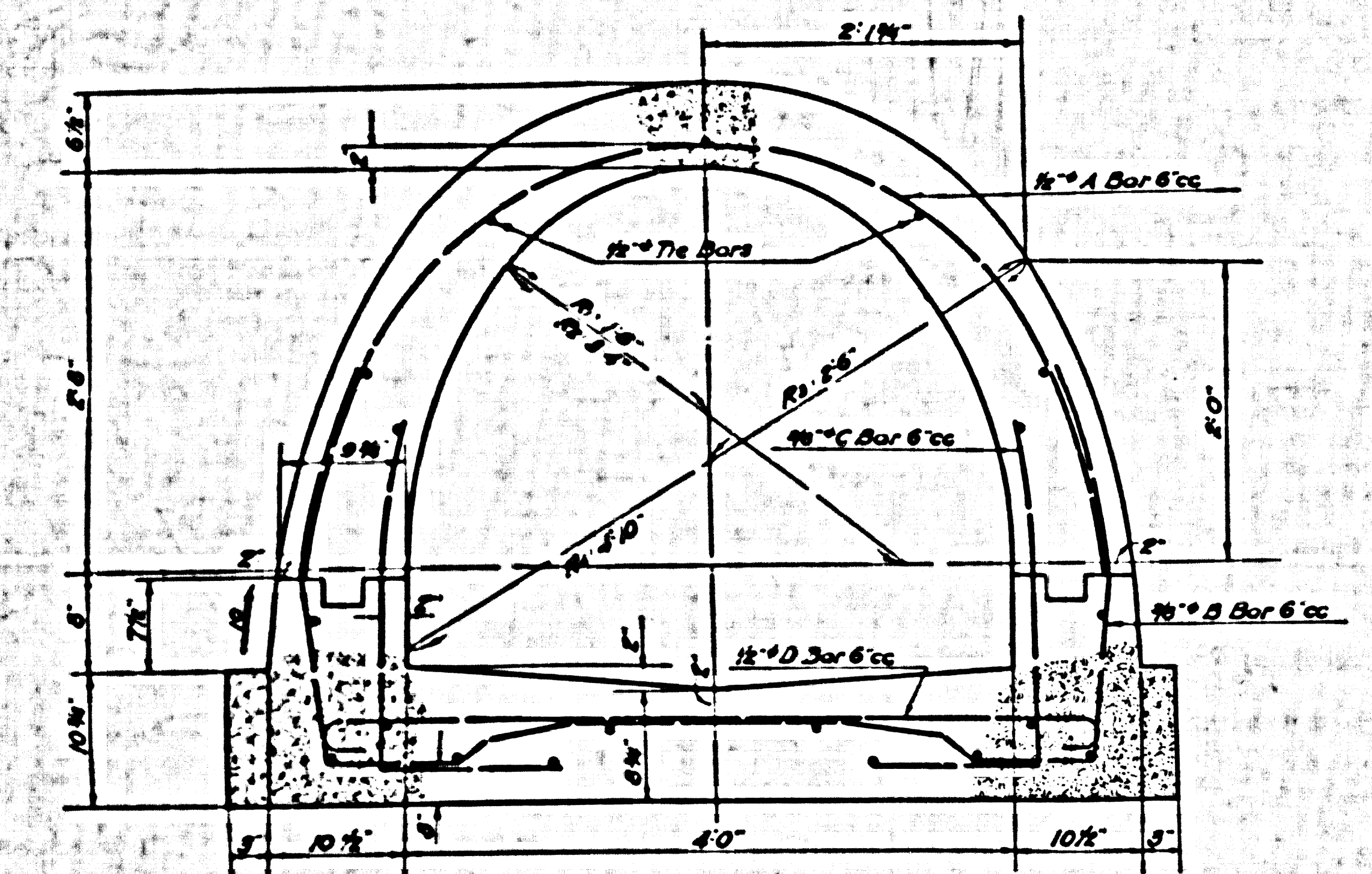
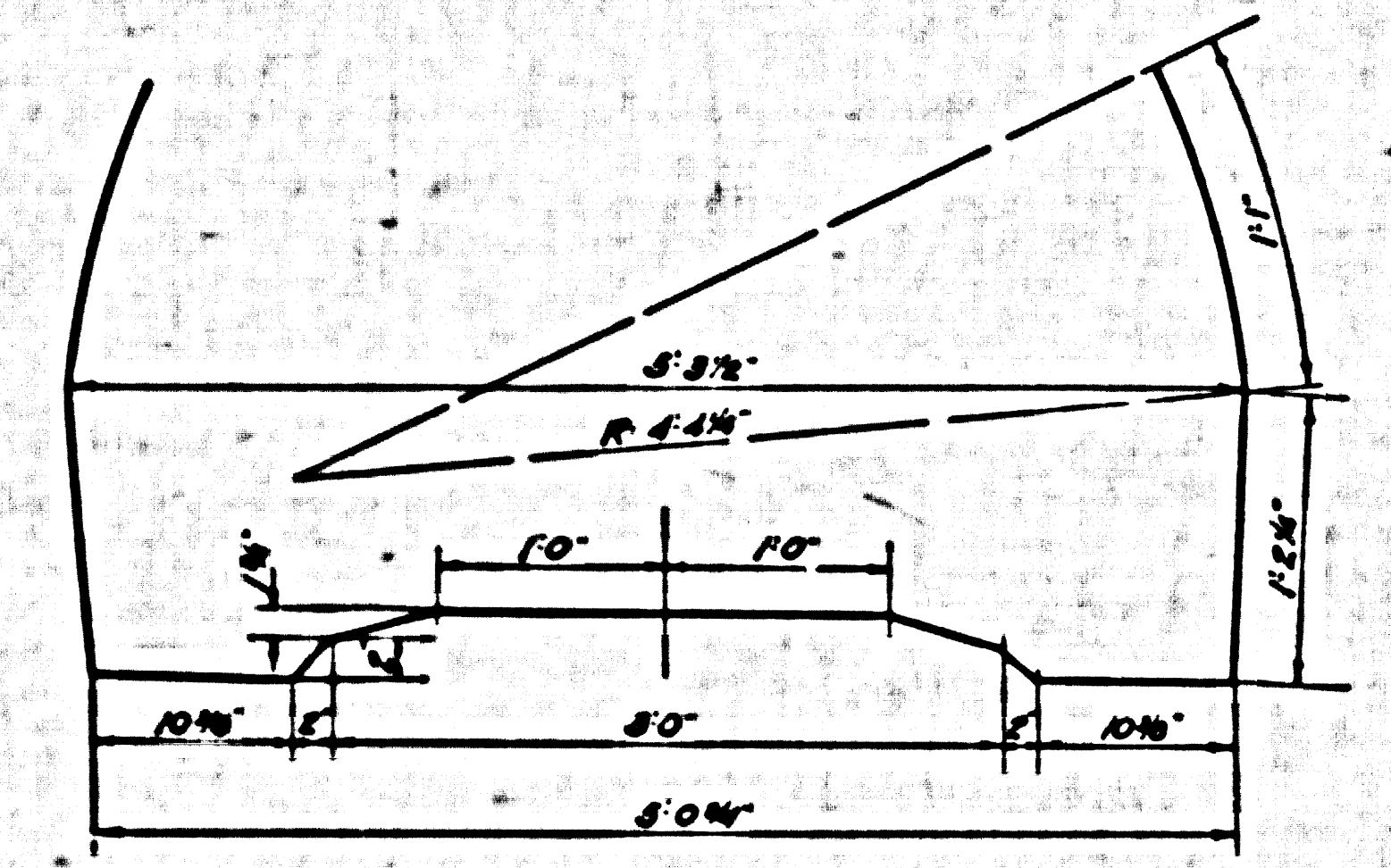
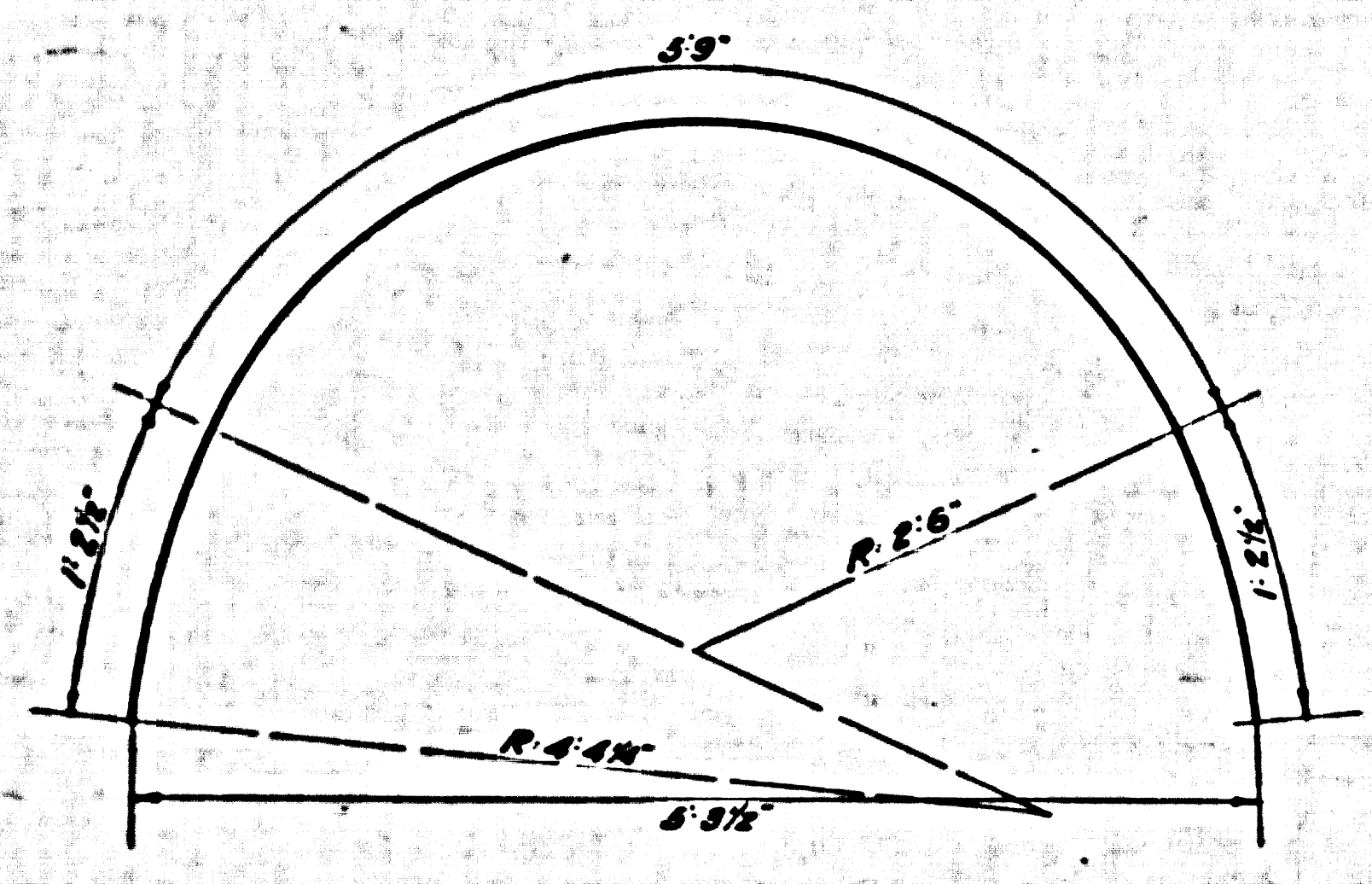
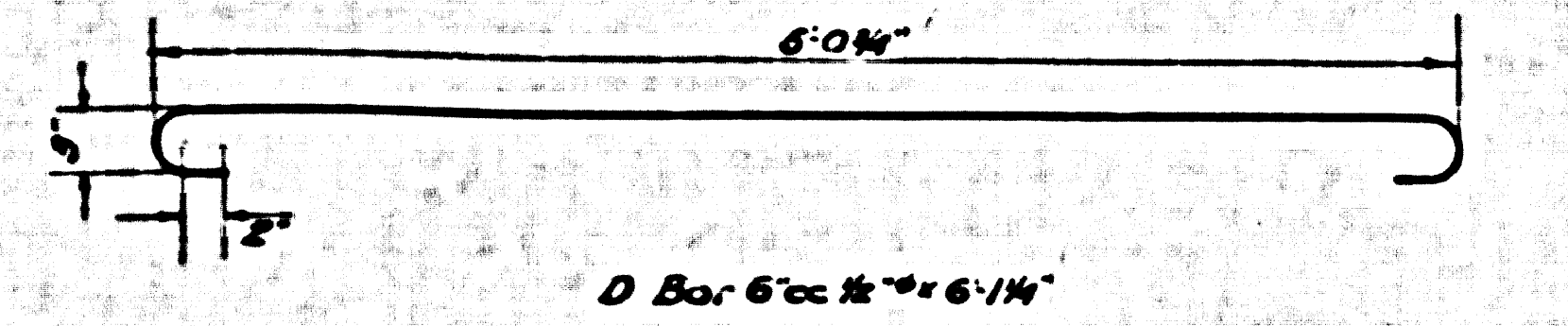
RECOMMENDED: _____ APPROVED: *Alfred Jones*
L.S. ENGINEER

THIS DRAWING AND THE DATA HEREON ARE HEREBY MADE A PART OF THE SPECIFICATIONS

REFERENCE			
F.B.	791	DESIGNED	E. J. Epperson June 1940
Revised	Special Arch Sec. (Dc 39) to 1940	TRACED	W. F. Brushner June 1940
		CHECKED	J. H. Rice June 1940

CSB-11984
A1 OF A2

④

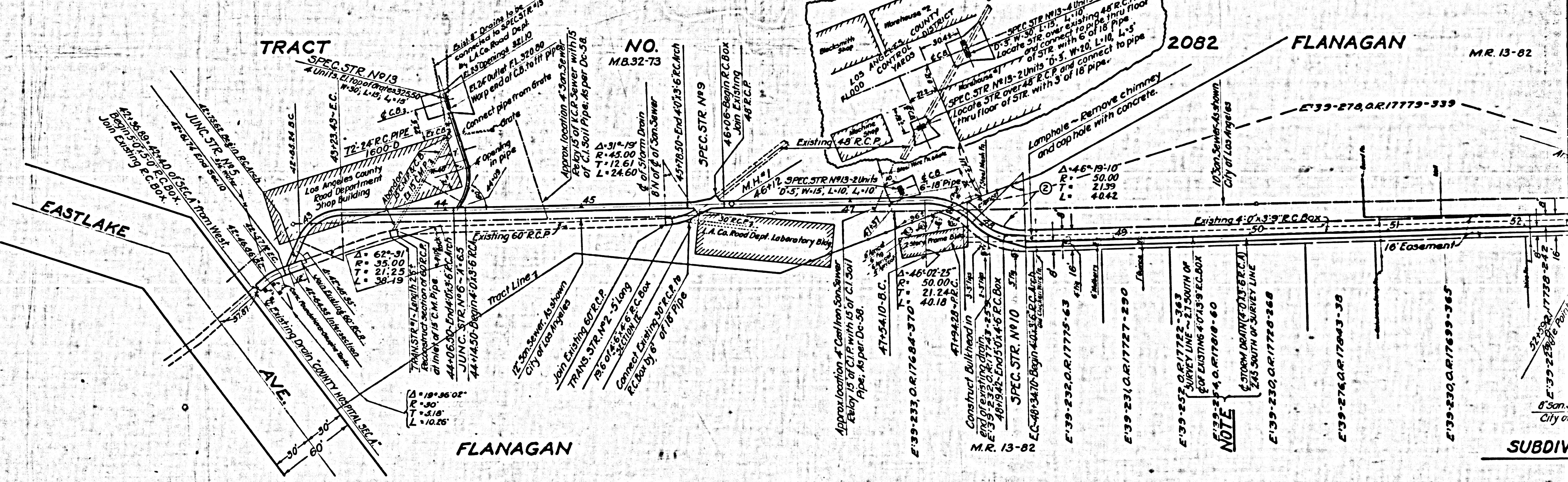
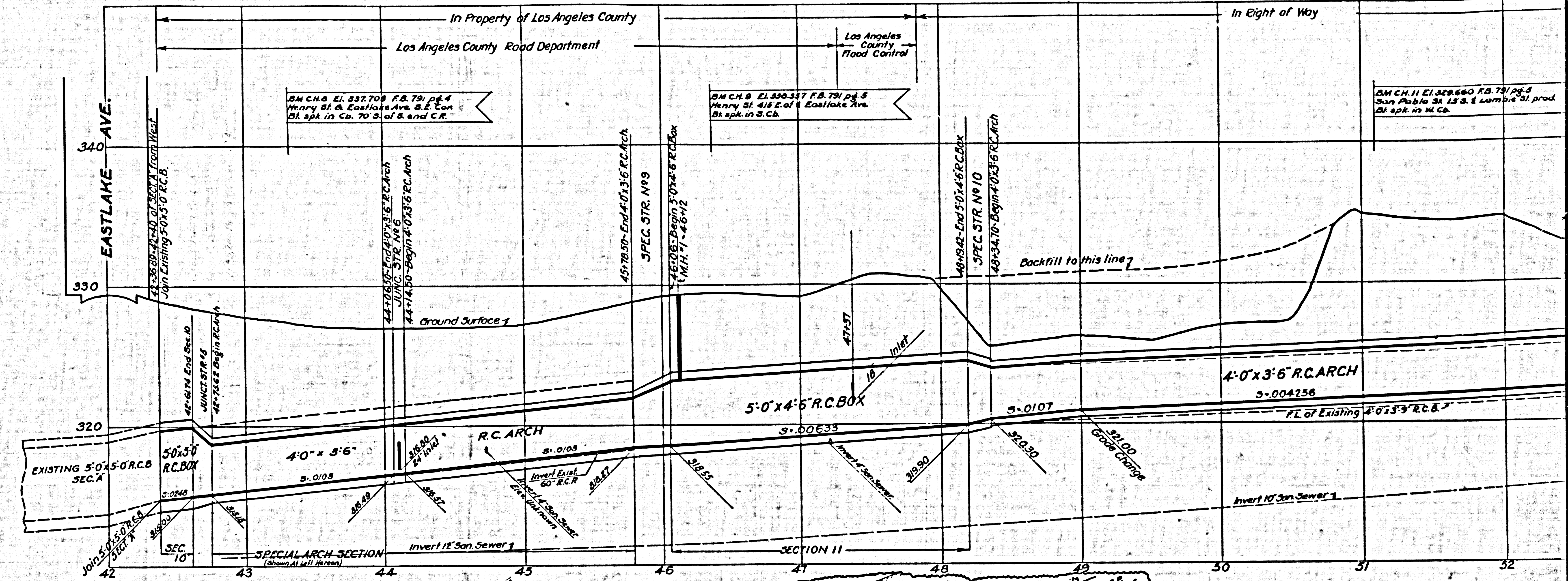


Top Blob Cover 18 Feet Truck Loading
Concrete 0.44 Cu Yds per Lin. Foot
Reinf. Steel 44 lbs per lin. Foot

SPECIAL ARCH SECTION 40x36"
BET. STA. 42+76.62 & STA. 45+78.50

Scale: 1/2" = 1'-0"

CSB-1198-4
A2 OF A2



NOTE

SUBDIV