

MAP OF
MERCED AVENUE
 FROM
 NORTHWESTERLY BOUNDARY LINE
 OF THE CITY OF WEST COVINA
 TO
 ARROW HIGHWAY.

COUNTY SURVEYORS MAP NO B-1206
 SHEET NO 2 OF 2 SHEETS.
 SCALE- 1 INCH = 100 FEET.

INDEX 46

JOB NUMBER 7114.

ALFRED JONES, COUNTY SURVEYOR.
 SURVEYED- APRIL, 1935, TO MAY, 1940.

SURVEYED UNDER INSTRUCTIONS OF THE
 BOARD OF SUPERVISORS PER ORDER DATED
 MARCH 21, 1932.

BEARINGS ARE BASED ON THE BEARING OF
 OLIVE STREET AS SHOWN ON C.S. B-1020-5.

F. B. 520-53-72,77-80,108-124.
 F. B. 587-181-237.

FIELD WORK BY... R. B. EMMOTT.
 H. F. EVANS.
 OFFICE WORK BY... J. D. PRICE.
 CHECKED BY... D. M. FINLEY.

CSB-1206-2
 A10FA4

1/2 OF NE 1/4 OF SEC. 7,
T. 1 S., R. 10 W., S. B. M.
C. S. 9363.

NE 1,
EAST 1/2 OF NW 1/4 OF SEC. 7,
T. 1 S., R. 10 W., S. B. M.
C. S. 9363.

NO 2,
WEST 1/2 OF NW 1/4 OF SEC. 7,
T. 1 S., R. 10 W., S. B. M.
C. S. 9363.



1/4 SECTION CORNER.
Placed by the Surveyor & Town of
Los Angeles on the 10th day of
April 1887. Reference is made to
C.S. 9363. The corner is marked
with a 2 1/2 inch iron pipe 18 inches
long, with a cross on top.
T. 1 S. R. 10 W. S. B. M.

Placed by the Surveyor & Town of
Los Angeles on the 10th day of
April 1887. Reference is made to
C.S. 9363. The corner is marked
with a 2 1/2 inch iron pipe 18 inches
long, with a cross on top.
T. 1 S. R. 10 W. S. B. M.

Placed by the Surveyor & Town of
Los Angeles on the 10th day of
April 1887. Reference is made to
C.S. 9363. The corner is marked
with a 2 1/2 inch iron pipe 18 inches
long, with a cross on top.
T. 1 S. R. 10 W. S. B. M.

1/4 SECTION CORNER.
Placed by the Surveyor & Town of
Los Angeles on the 10th day of
April 1887. Reference is made to
C.S. 9363. The corner is marked
with a 2 1/2 inch iron pipe 18 inches
long, with a cross on top.
T. 1 S. R. 10 W. S. B. M.

PORTION OF NE 1/4 OF NW 1/4 OF SEC. 18, T. 1 S., R. 10 W., S. B. M.

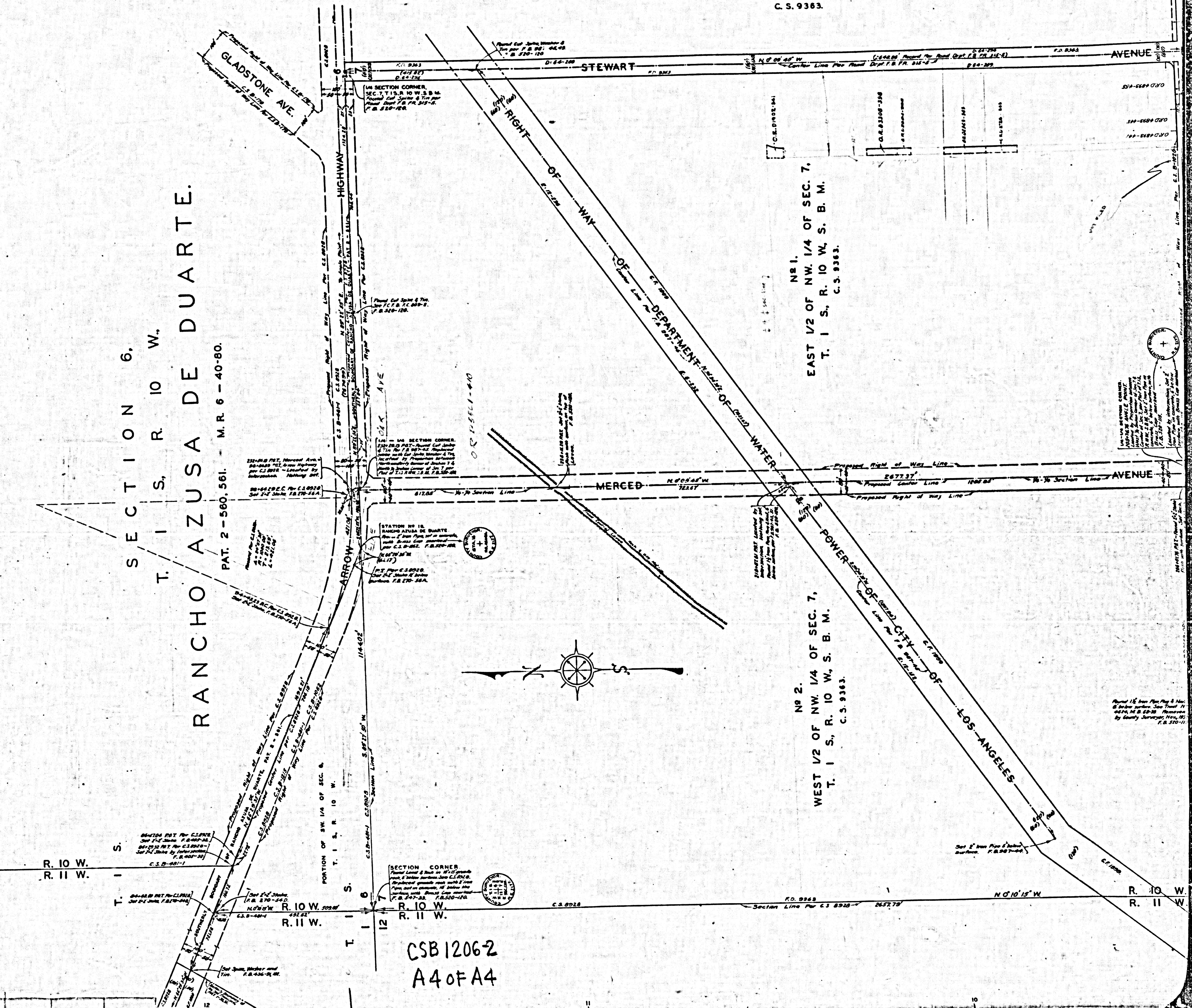
PORTION OF NW 1/4 OF NW 1/4 OF SECTION 18, T. 1 S., R. 10 W., S. B. M.

PORTION OF NW 1/4 OF NW 1/4 OF SECTION 18, T. 1 S., R. 10 W., S. B. M.

TRACT No 1605
M. B. 20-32
CSB-1206-2
A3 OF A4

WEST 1/2 OF NE 1/4 OF SEC. 7,
T. 1 S., R. 10 W., S. B. M.
C. S. 9383.

SECTION 6,
T. 1 S., R. 10 W.,
RANCHO AZUSA DE DUARTE.
PAT. 2-560,561. - M. R. 6-40-80.

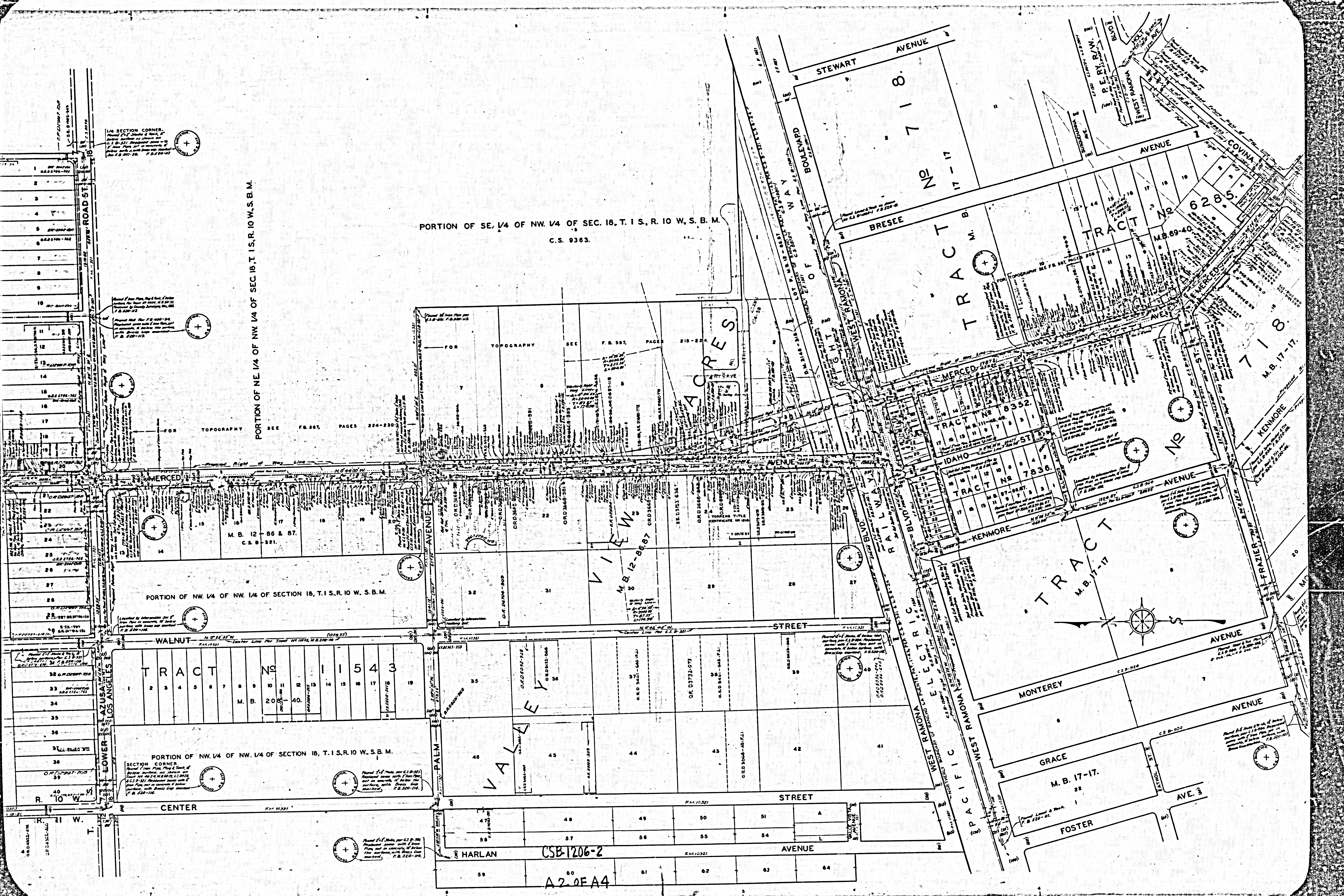


NO. 1,
EAST 1/2 OF NW 1/4 OF SEC. 7,
T. 1 S., R. 10 W., S. B. M.
C. S. 9383.

NO. 2,
WEST 1/2 OF NW 1/4 OF SEC. 7,
T. 1 S., R. 10 W., S. B. M.
C. S. 9383.

CSB 1206-2
A40FA4

Approved 1/16 from Plan Map & Map
of Section corners, Line T. 1 S., R. 10 W.,
S. B. M. 1870, 1871 & 1872. Prepared
by County Surveyor, T. 1 S., R. 10 W.,
S. B. M. 1870-11.



PORTION OF SE. 1/4 OF NW. 1/4 OF SEC. 18, T. 1 S., R. 10 W., S. B. M.
C.S. 9363.

PORTION OF NE. 1/4 OF NW. 1/4 OF SEC. 18, T. 1 S., R. 10 W., S. B. M.

PORTION OF NW. 1/4 OF NW. 1/4 OF SECTION 18, T. 1 S., R. 10 W., S. B. M.

PORTION OF NW. 1/4 OF NW. 1/4 OF SECTION 18, T. 1 S., R. 10 W., S. B. M.

TRACT No. 11543
M. B. 20-40

TRACT No. 6285
M. B. 69-40

TRACT No. 17-17
M. B. 17-17

CSB 1206-2
A 2 OF A 4

1/4 SECTION CORNER.
Placed 2 1/2 inches from 1/4 corner of Section 18, T. 1 S., R. 10 W., S. B. M. by Surveyor J. H. ...

Placed 1/2 inch from 1/4 corner of Section 18, T. 1 S., R. 10 W., S. B. M. by Surveyor J. H. ...

Placed by reference to the 1/4 corner of Section 18, T. 1 S., R. 10 W., S. B. M. by Surveyor J. H. ...

SECTION CORNER.
Placed 2 1/2 inches from 1/4 corner of Section 18, T. 1 S., R. 10 W., S. B. M. by Surveyor J. H. ...

Placed 2 1/2 inches from 1/4 corner of Section 18, T. 1 S., R. 10 W., S. B. M. by Surveyor J. H. ...

Placed 2 1/2 inches from 1/4 corner of Section 18, T. 1 S., R. 10 W., S. B. M. by Surveyor J. H. ...

Placed 2 1/2 inches from 1/4 corner of Section 18, T. 1 S., R. 10 W., S. B. M. by Surveyor J. H. ...

Placed 2 1/2 inches from 1/4 corner of Section 18, T. 1 S., R. 10 W., S. B. M. by Surveyor J. H. ...