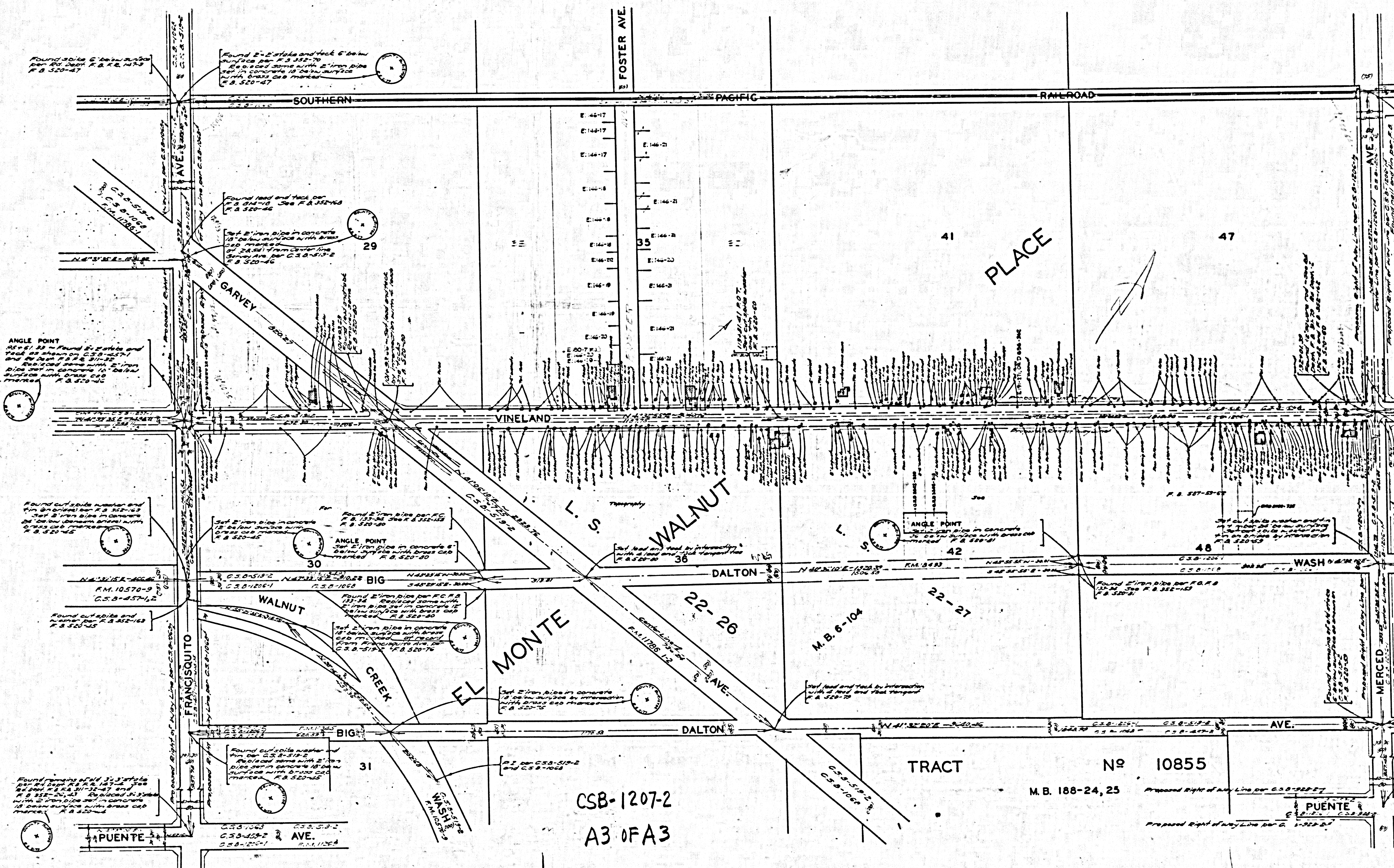


CSB-1207-2
A20FA3



Found 20' dia C pipe under
 P.M. 10570-9 F.B. 520-47

Found 2" x 2" pipe and tack 6" below
 surface per F.B. 520-71
 6" x 6" cast iron pipe with 2" iron pipe
 set in concrete 18" below surface
 with brass cap marked
 F.B. 520-47

Found lead and tack per
 F.B. 520-46 See F.B. 520-46
 Set 2" iron pipe in concrete
 18" below surface with brass
 cap marked
 24.50' from corner
 from P.M. 10570-9
 F.B. 520-46

ANGLE POINT
 45-41-33 - Found 2" x 2" pipe and
 tack 6" below surface per F.B. 520-47
 and 24" dia F.B. 520-46
 Set 2" iron pipe in concrete
 18" below surface with brass
 cap marked
 F.B. 520-46

Found cut side washer and
 pin on ground per F.B. 520-45
 Set 2" iron pipe in concrete
 18" below surface with brass
 cap marked
 F.B. 520-45

Found 2" iron pipe per F.B. 520-45
 F.B. 520-45
 ANGLE POINT
 Set 2" iron pipe in concrete 6"
 below surface with brass cap
 marked F.B. 520-45

Found cut side and
 washer per F.B. 520-45
 F.B. 520-45

Found 2" iron pipe per F.B. 520-76
 F.B. 520-76
 Set 2" iron pipe in concrete
 18" below surface with brass
 cap marked
 F.B. 520-76

Found remains of 2" x 2" pipe
 set in concrete 18" below
 surface with brass cap
 marked
 F.B. 520-46

Found cut side washer
 per F.B. 520-46
 Replaced with 2" iron
 pipe set in concrete 18"
 below surface with brass cap
 marked
 F.B. 520-46

CSB-1207-2
 A3 OF A3

TRACT No 10855
 M.B. 188-24, 25

Prepared Right of Way Line per G. 1-188-24
 Puente Ave