

MAP AND PROFILE OF  
**COLBY RANCH LATERAL TRUCK TRAIL**  
 FROM  
 EAST PALM DRIVE  
 TO  
 GLENDORA MOUNTAIN ROAD  
 IN EAST 1/2 OF SECTION 20-T.1N. R.9W. S.B.M.  
 COUNTY SURVEYORS MAP NO B-1211  
 SCALES AS SHOWN  
 JOB NUMBER 8123  
 ALFRED JONES-COUNTY SURVEYOR  
 SURVEYED- JAN.-MAR. 1936

SURVEYED ON REQUEST OF THE COUNTY FORESTER & FIRE WARDEN  
 UNDER RULE 21, ORDINANCE NO 929 BY LETTER DATED JAN. 24, 1936  
 AND AS AUTHORIZED BY THE BOARD OF SUPERVISORS IN THEIR  
 ORDER OF JAN. 13, 1936  
 BEARINGS ARE BASED ON BEARING OF NORTH LINE SECTION 20, T.1N.,  
 R.9W. AS SHOWN ON C.S.B. 745-2

FB.517-221-237; L.B.710-175-221

FIELD WORK BY . . . . . A.N. HELLSTROM  
 OFFICE WORK BY . . . . . C.W. COX  
 W.H. BLACKMER  
 H.N. BRADSTREET  
 CHECKED BY . . . . . K.R. Mc PHERSON  
 L.K. FREEMAN  
 J.H. SMITH

INDEX 48-14

DATUM - MEAN SEA LEVEL  
 ELEVATIONS SHOWN HEREON ARE BASED  
 ON THE 1928 U.S.C.&G.S. ADJUSTMENT  
 OF U.S.G.S. BM AT FOOTHILL BLVD. & LORAIN  
 AVE. (U.S.384)

MARGINAL MAP  
 SCALE: 1" = 600 FT.

CSB-1211  
 A1 OF A7

COUNTY SURVEYORS MAP NO B-1211

COUNTY SURVEYORS MAP NO B-1211

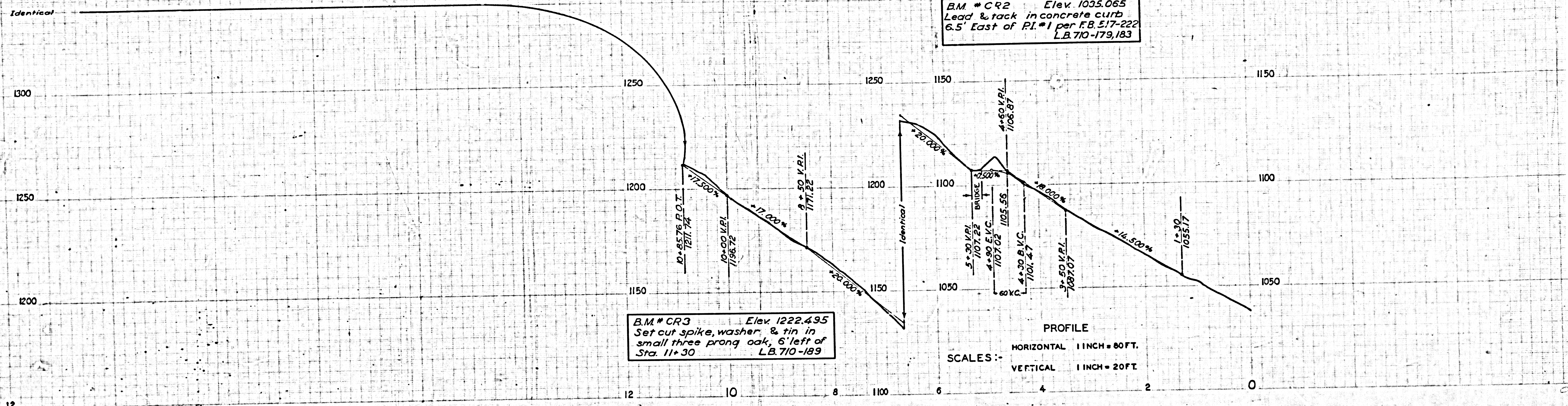
114-20  
END

Identical

B.M. \* CR2 Elev. 1035.065  
Lead & tack in concrete curb  
6.5' East of P.I. #1 per F.B. 517-222  
L.B. 710-179,183

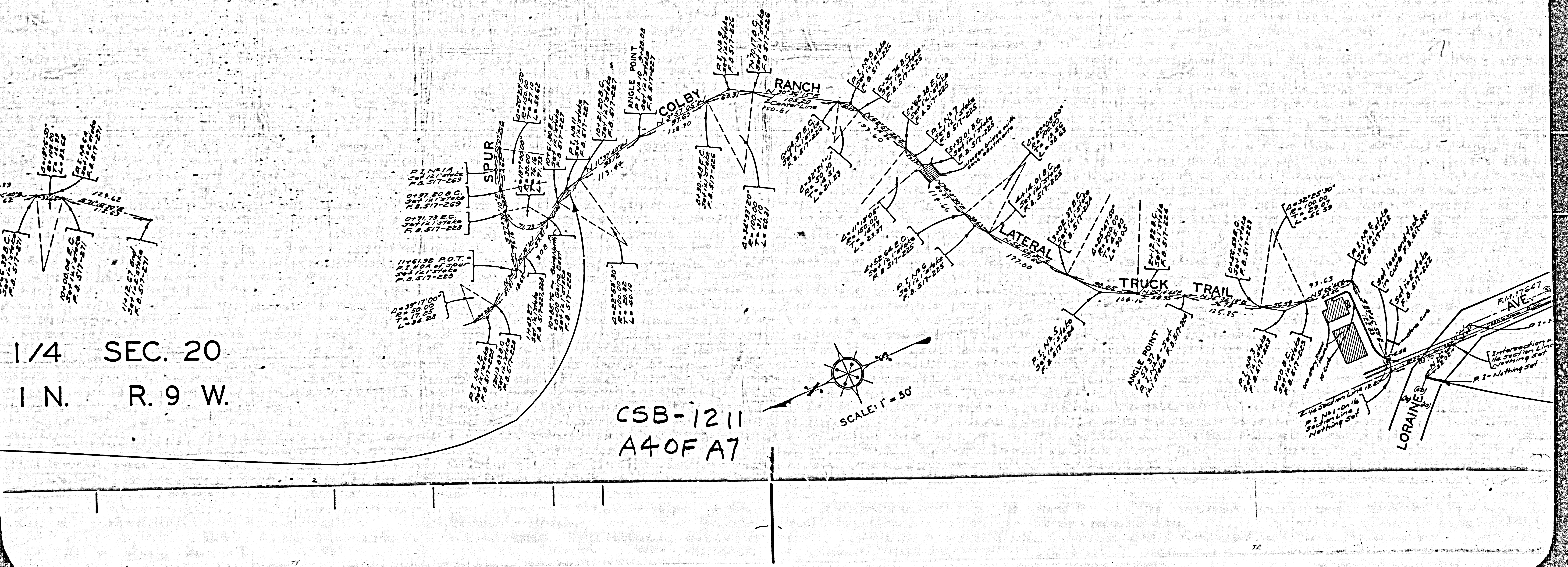
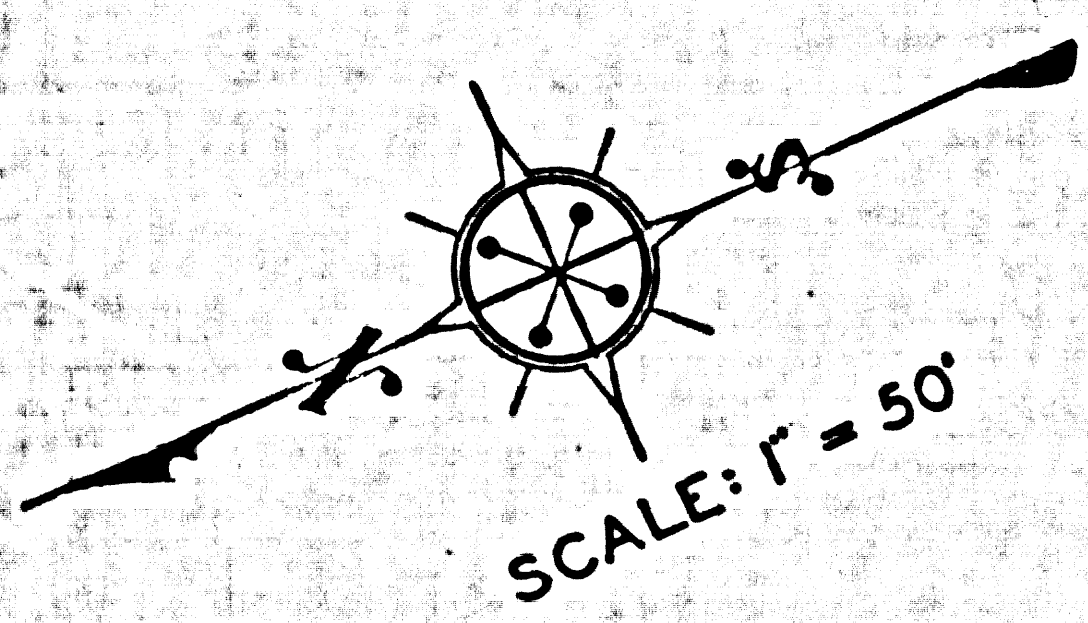
B.M. \* CR3 Elev. 1222.495  
Set cut spike, washer, & tin in  
small three prong oak, 6' left of  
Sta. 11+30  
L.B. 710-189

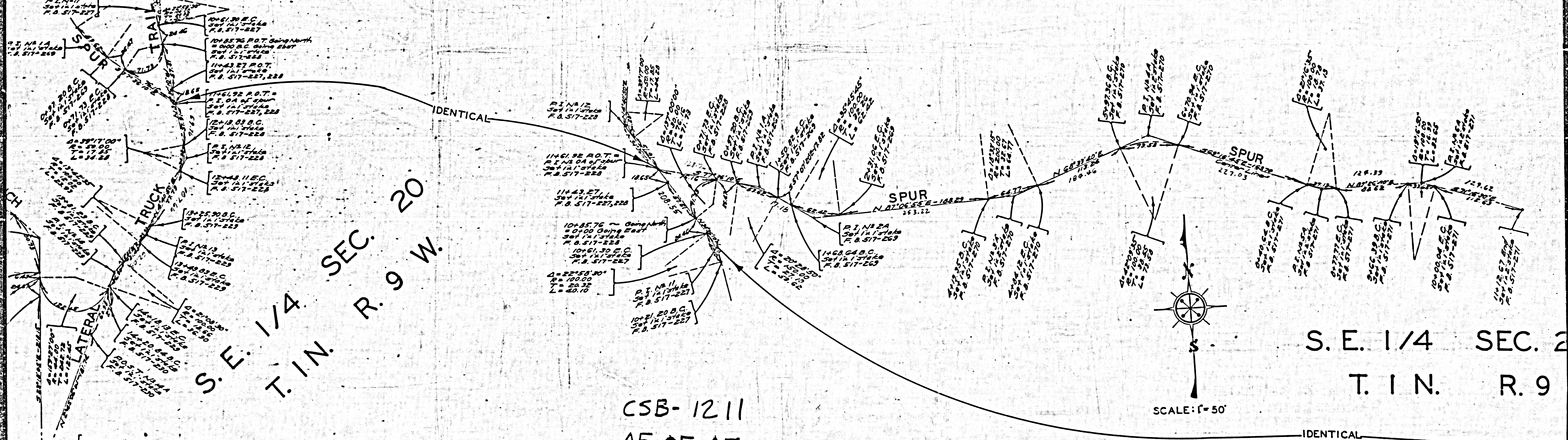
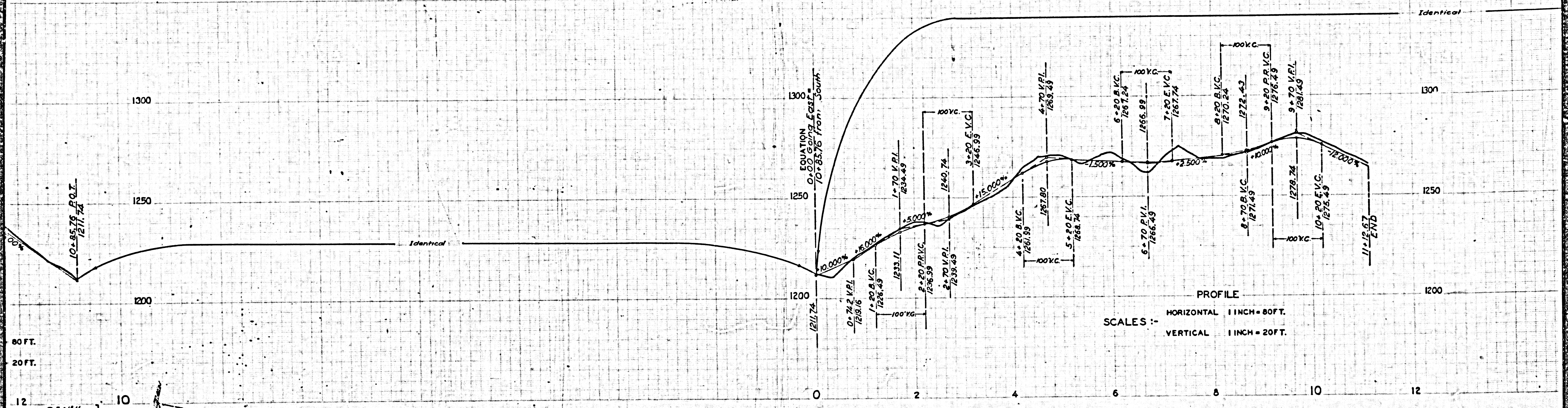
PROFILE  
HORIZONTAL 1 INCH = 80 FT.  
VERTICAL 1 INCH = 20 FT.



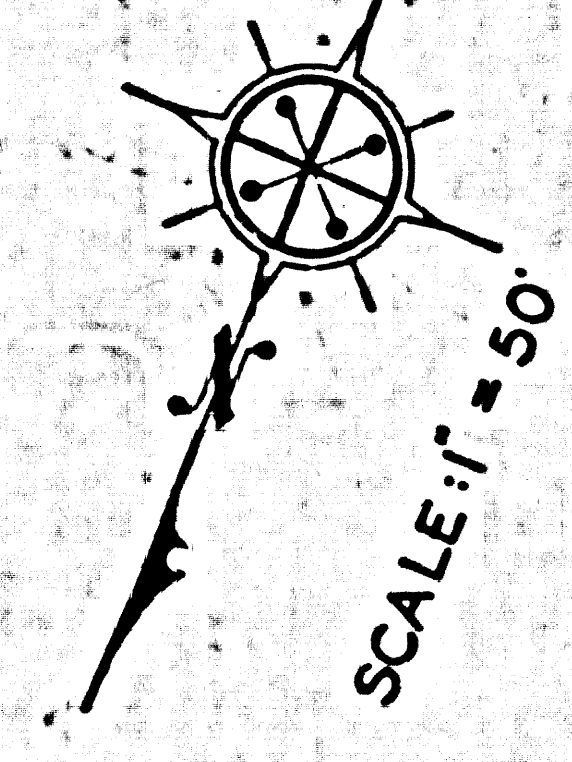
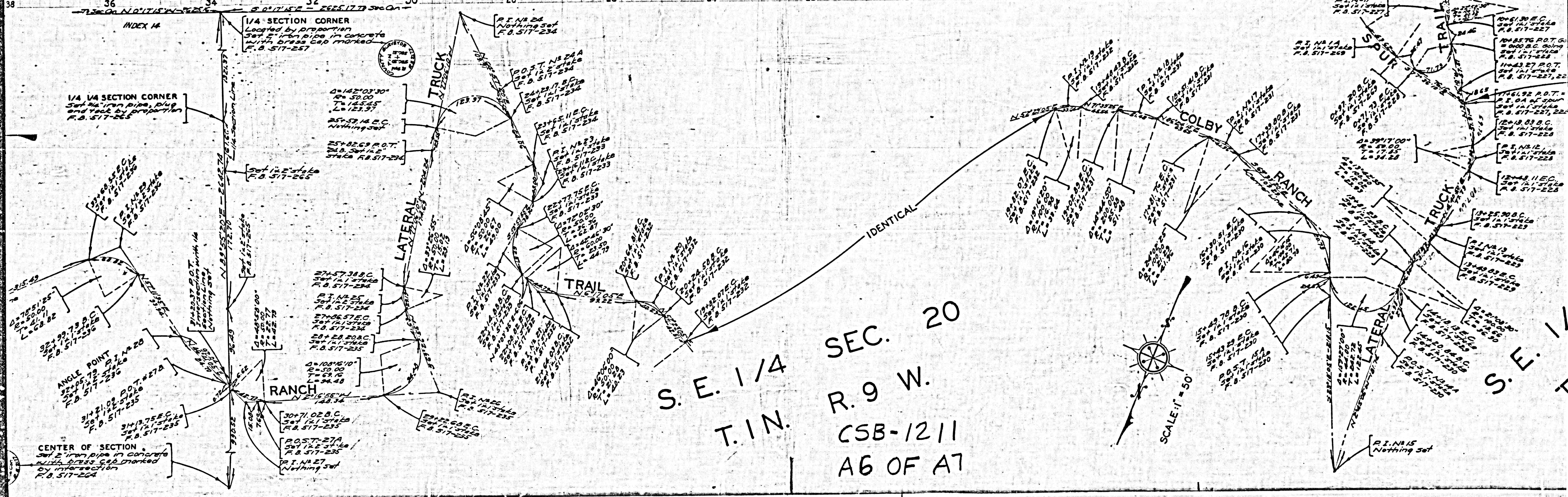
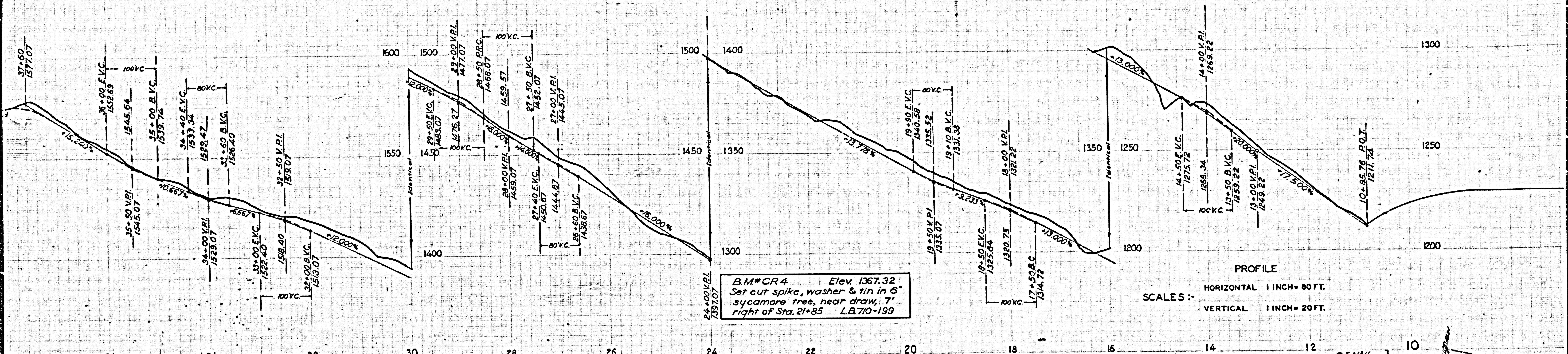
1/4 SEC. 20  
1 N. R. 9 W.

CSB-1211  
A4 OF A7





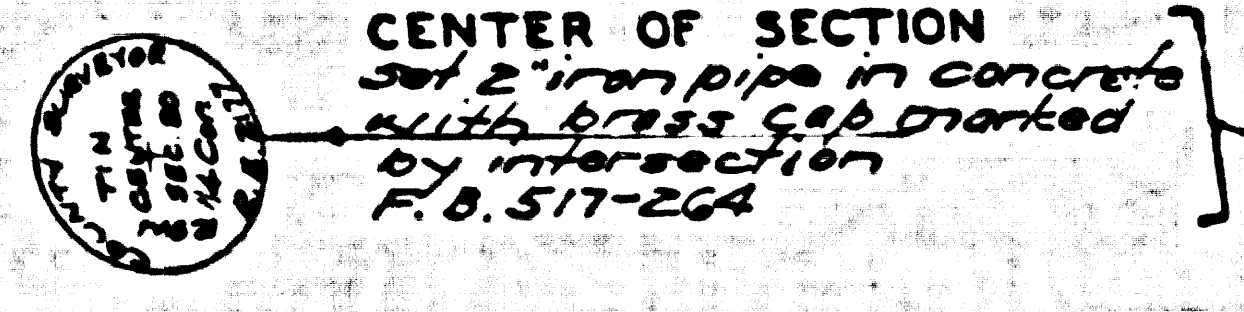
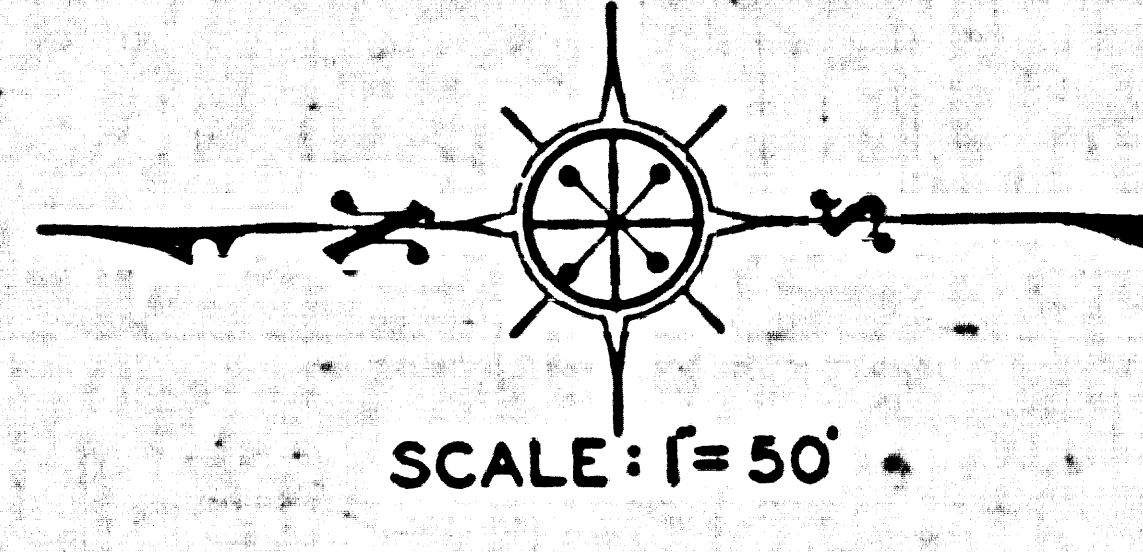
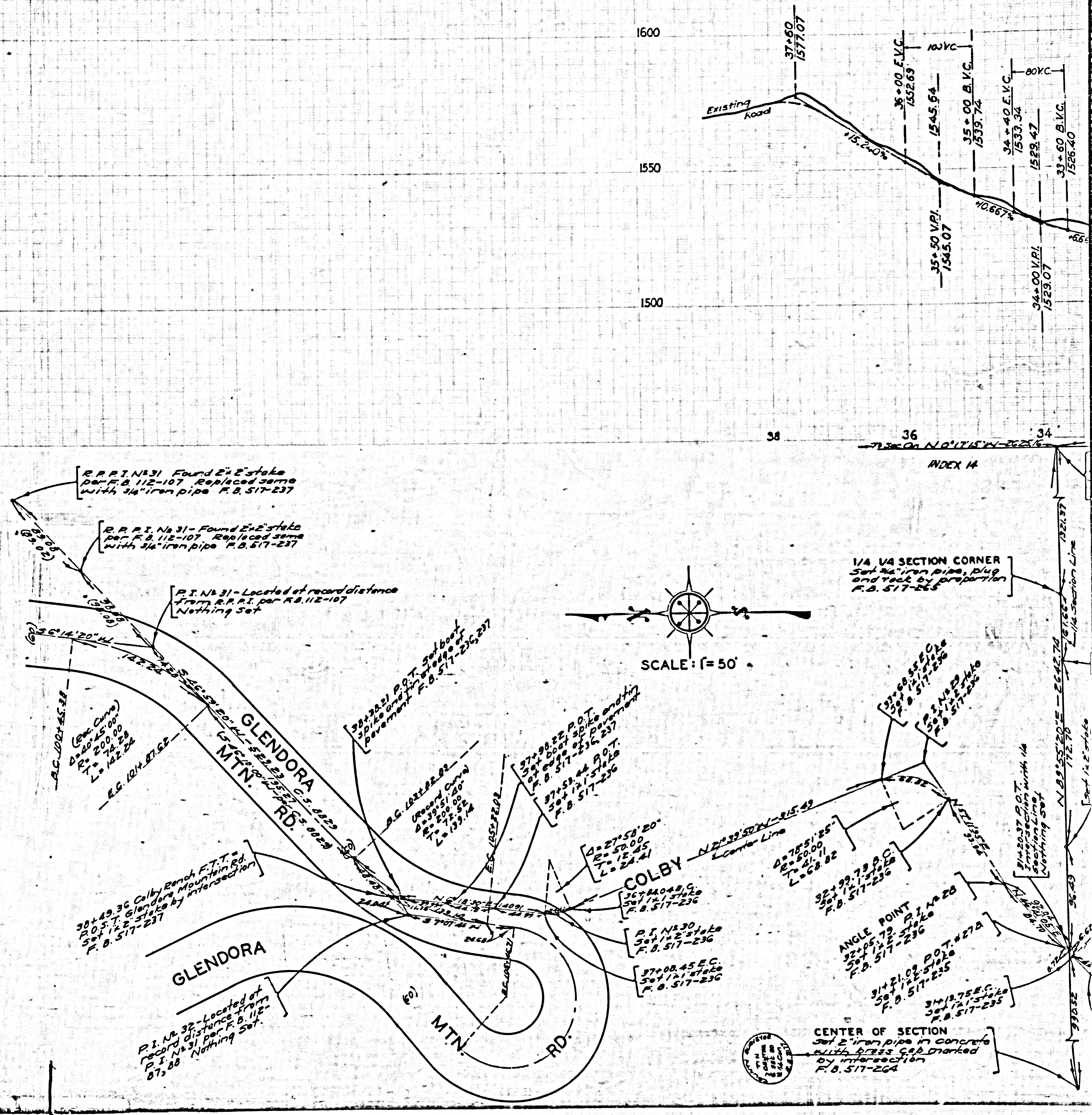
CSB-1211  
A5 OF A7

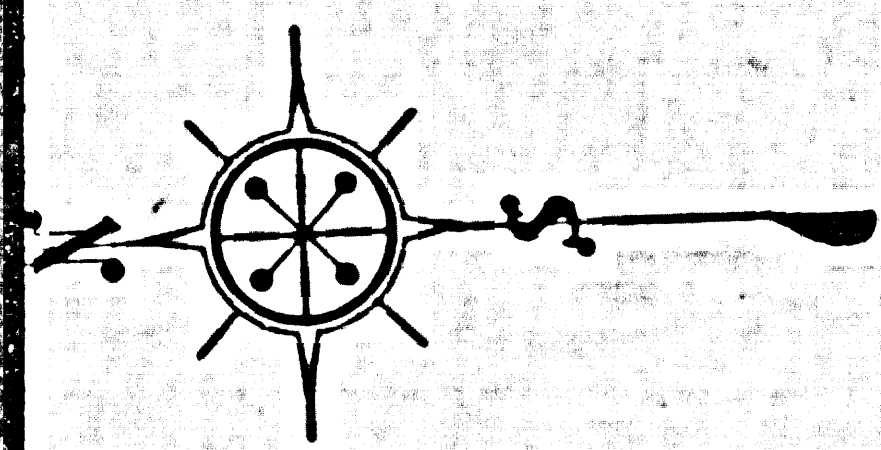


CONTRACT NO. 2009-10-002

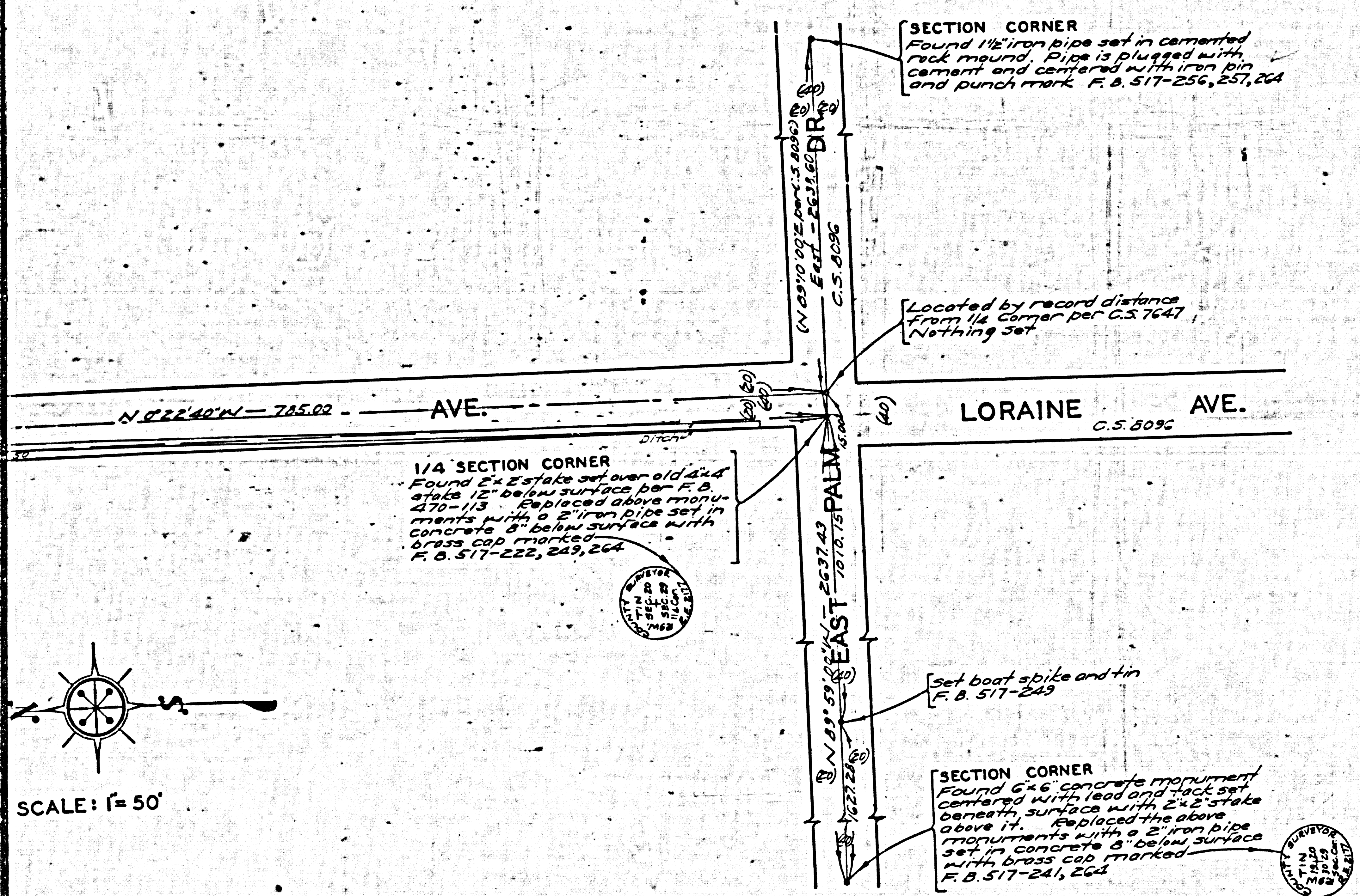
COUNTY SURVEYORS' MAP NO. 151

CSB-1211  
A7 OF A7

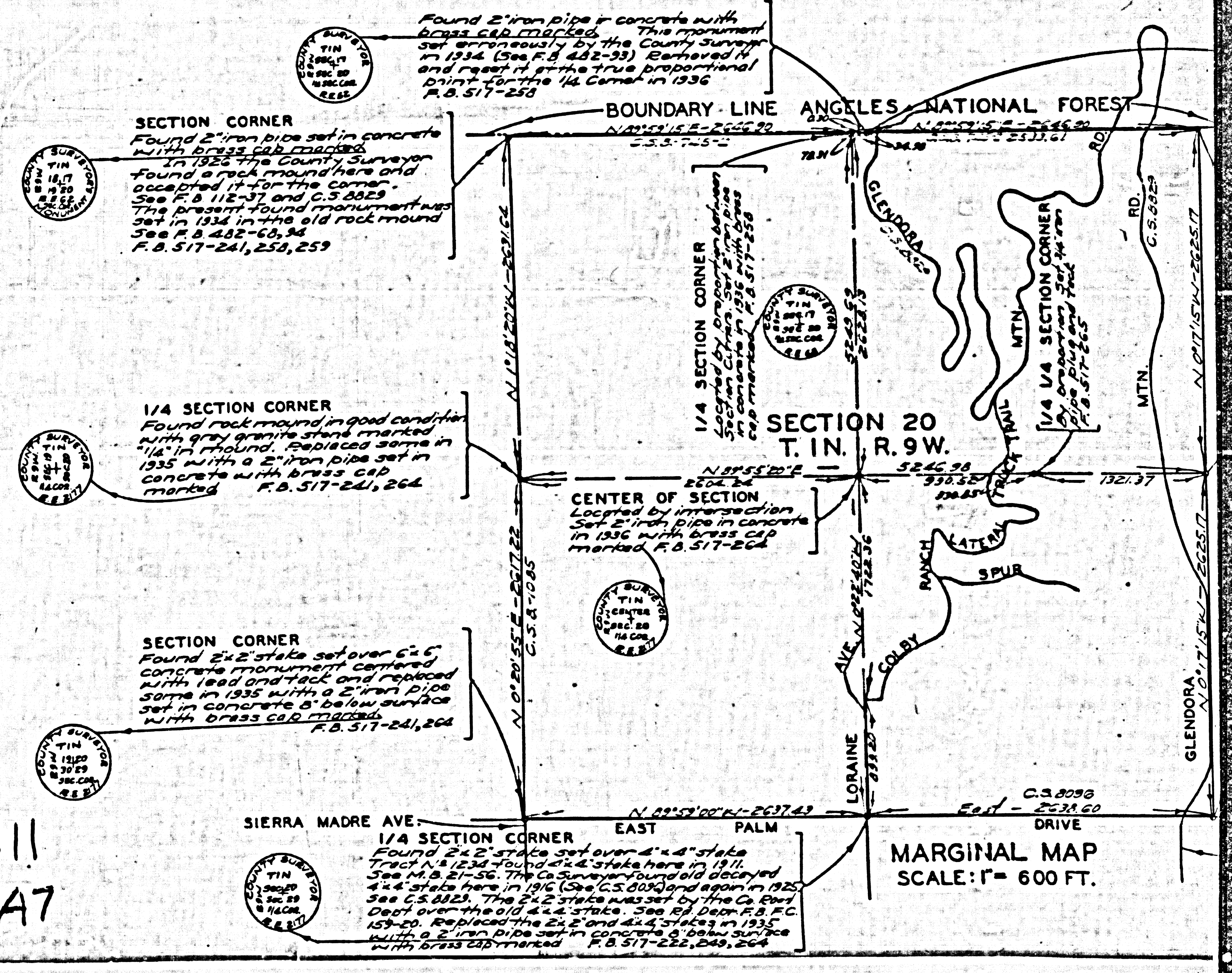




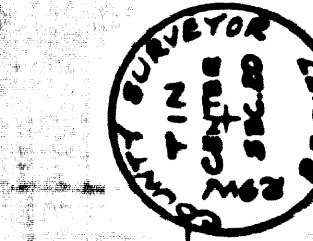
SCALE: 1" = 50'



CSB-1211  
A2 OF A7



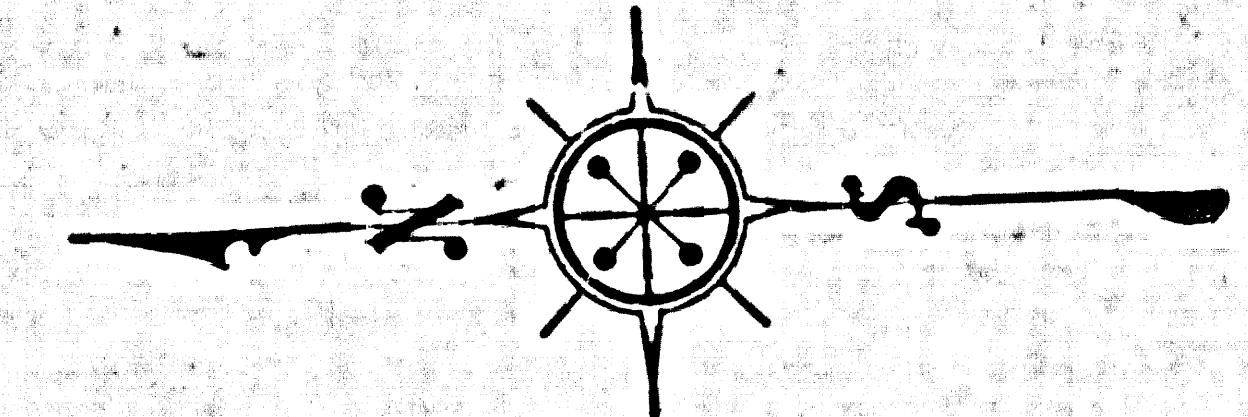
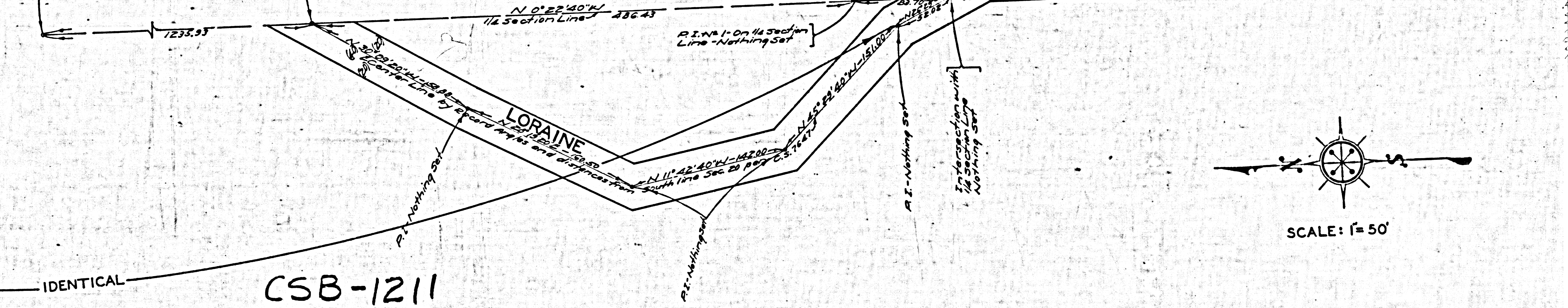
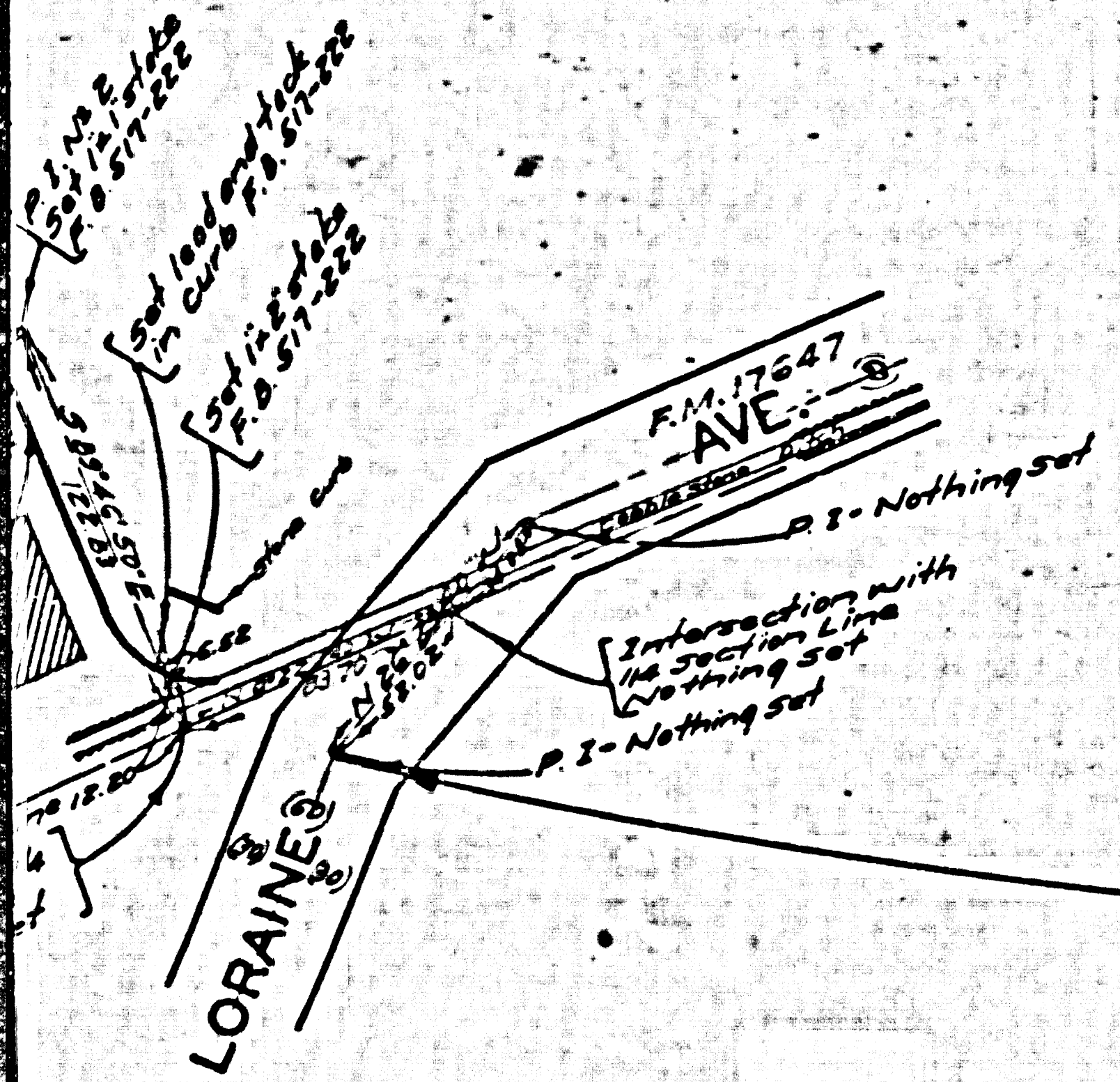
MARGINAL MAP  
SCALE: 1" = 600 FT.



CENTER OF SECTION  
Located by intersection  
Set 2 iron pipes  
1/2" dia. spaced 10' apart  
P.B. 517-222

Intersection with 1/4 Section  
Line - Nothing set

Set 1 iron pipe  
1/2" dia. spaced 10' apart  
P.B. 517-222  
Set 2 iron pipe  
1/2" dia. spaced 10' apart  
P.B. 517-222  
Set 3 iron pipe  
1/2" dia. spaced 10' apart  
P.B. 517-222



SCALE: 1" = 50'

IDENTICAL  
CSB-1211  
A3 OF A7