

COUNTY OF LOS ANGELES
 MAP OF
MESA PEAK FIRE TRUCK TRAIL
 FROM
 NORTHERLY LINE RANCHO TOPANGA MALIBU SEQUIT
 TO
 CORRAL CANYON ROAD

COUNTY SURVEYORS MAP NO B-1219
 SHEET NO 1 OF 3 SHEETS
 SCALE: 1 INCH = 50 FT.

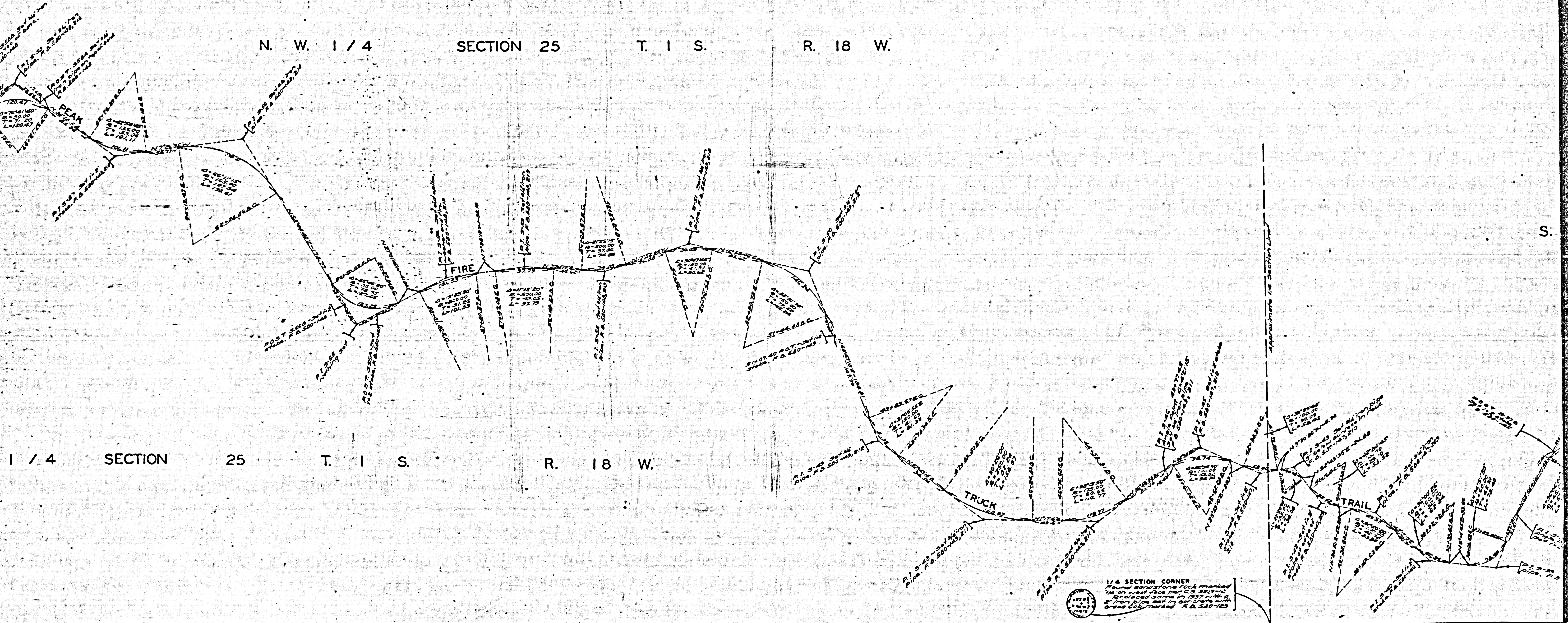
JOB NUMBER 8082
 ALFRED JONES-COUNTY SURVEYOR
 SURVEYED APR. 1935-SEPT. 1941
 SURVEYED ON REQUEST OF THE COUNTY
 FORESTER AND FIRE WARDEN UNDER RULE 21,
 ORD. 929 BY LETTER DATED FEB. 23, 1935
 AND AS AUTHORIZED BY THE BOARD OF
 SUPERVISORS IN THEIR ORDER OF JAN. 13, 1930
 BEARINGS ARE BASED ON THE BEARING OF
 SOUTH LINE SEC. 14-T. 1 S.-R. 18 W. AS SHOWN
 ON C. S. B.-993-1
 F. B. 580-5-220
 FIELD WORK BY S. E. BUTLER
 T. J. STEVENSON
 L. S. HAMMOND
 OFFICE WORK BY K. R. M. PHERSON
 C. W. COX
 CHECKED BY D. M. FINLEY

SEE INDEX MAP ON SHEET NO 3

INDEX 31
 I. M. 129-057

CSB-1219-1
 A1 OF A4

N. W. 1 / 4 SECTION 25 T. 1 S. R. 18 W.



1 / 4 SECTION 25 T. 1 S. R. 18 W.

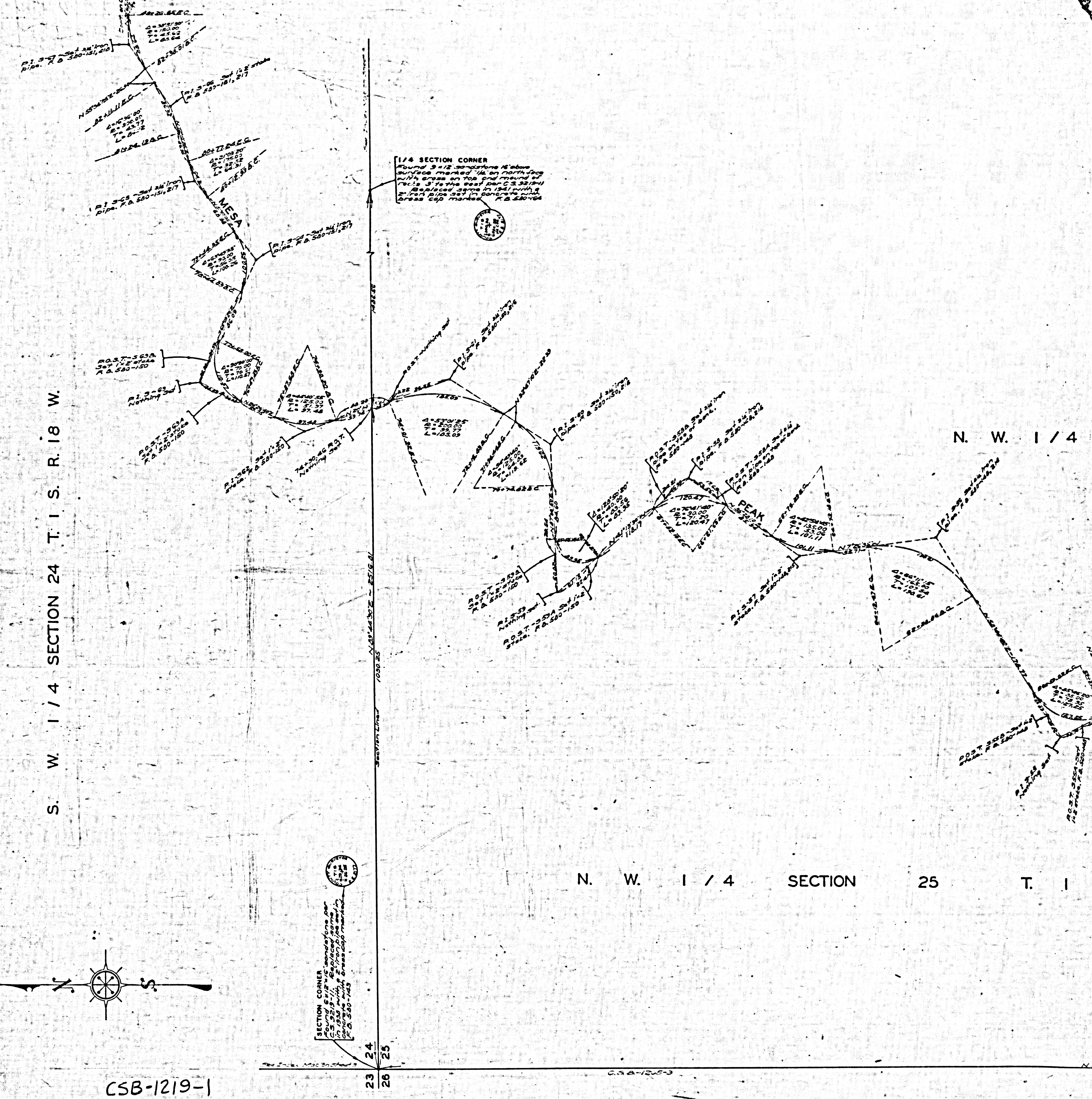
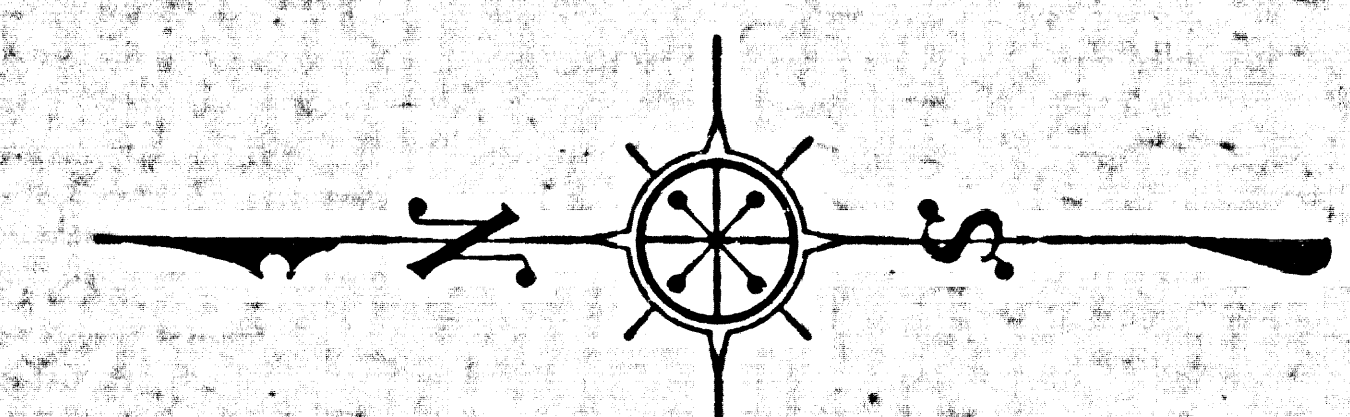
CSB-1219-1
A3 OF A4

CSB-1219-1
A4 OF A4

SHEET NO. 4 OF 4

S. W. 1 / 4 SECTION 24 T. 1 S. R. 18 W.

N. W. 1 / 4 SECTION 25 T. 1



3/4 SECTION CORNER
Found 3 1/2" diameter 16" above
surface marked '4' in north-south
with edges on top and round of
rod 3' to the east per C.S. 33191
Replaced with 2" dia. iron
with 1/4" dia. set in concrete with
green cap marked

SECTION CORNER
Found 3 1/2" diameter 16" above
surface marked '4' in north-south
with edges on top and round of
rod 3' to the east per C.S. 33191
Replaced with 2" dia. iron
with 1/4" dia. set in concrete with
green cap marked

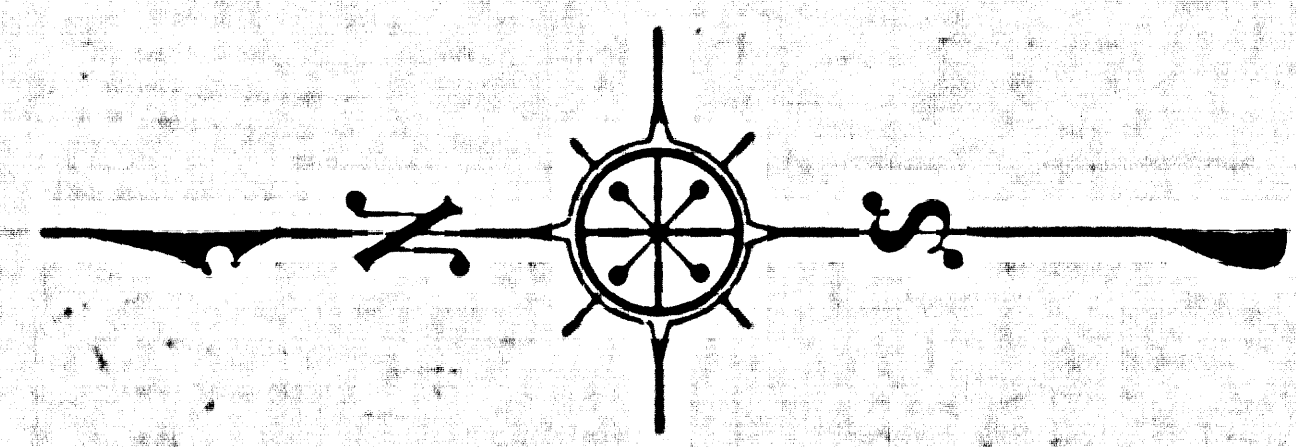
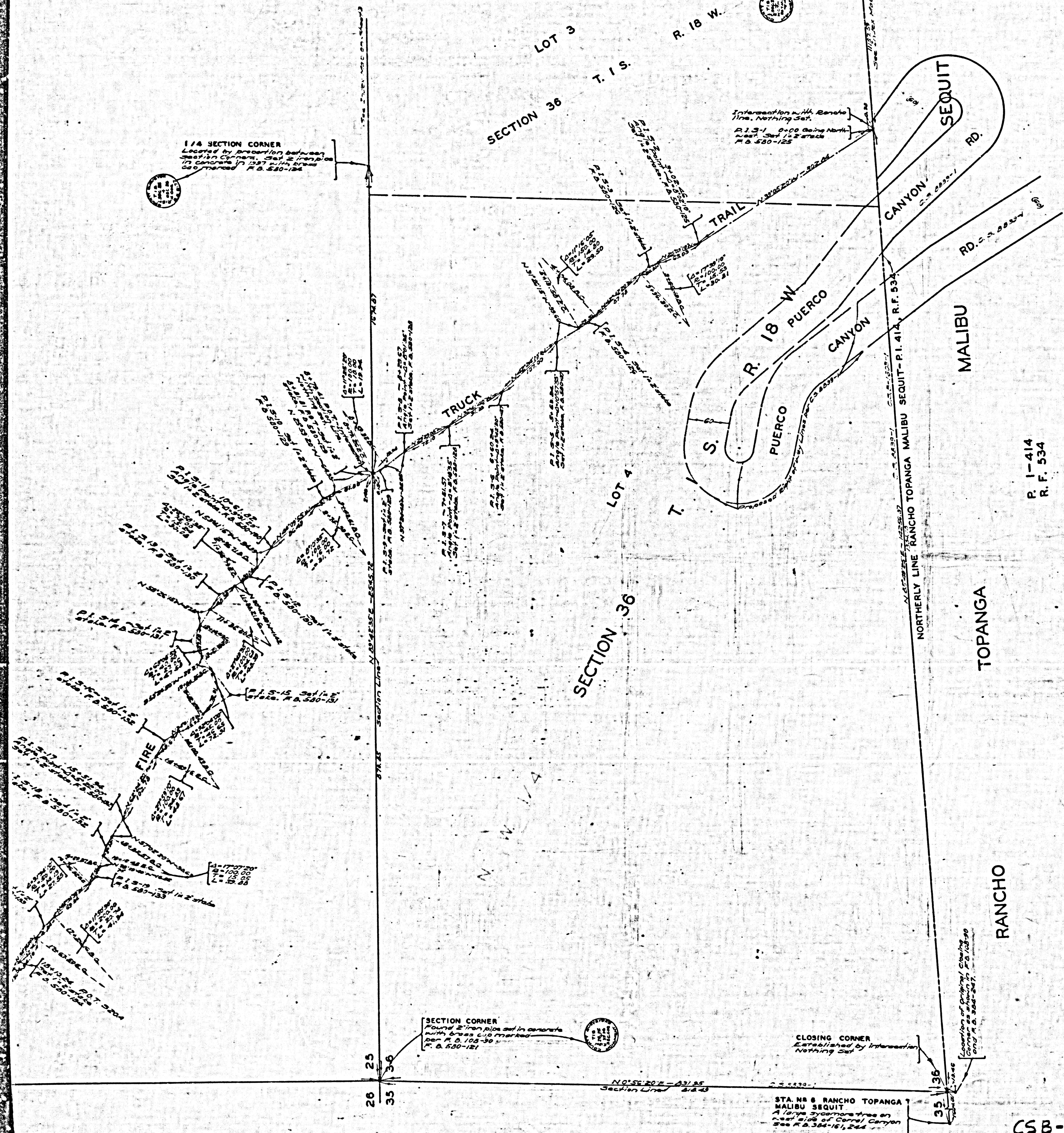
CSB-1219-1
A4 OF A4

STA. NO. 4 RANCHO TOPANGA
MALIBU SEQUIT
A large sycamore tree on east
bank of Malibu Creek.
See P. & S. 245-111

WITNESS CORNER
A 2" iron pipe set in concrete
with brass cap marked
P. & S. 245-112

1/4 SECTION CORNER
Located by agreement between
Surveyors Currier, Day & Irwin
to concrete in 1917 with
cap marked P. & S. 240-124

Information with Rancho
Title, Nothing Set.
P. & S. 1 0-00 being North
west 1/4 of 2nd sec
P. & S. 230-125



COUNTY OF LOS ANGELES
MAP OF
MESA PEAK FIRE TRUCK TRAIL
FROM
NORTHERLY LINE RANCHO TOPANGA MALIBU SEQUIT
TO
CORRAL CANYON ROAD
COUNTY SURVEYORS MAP NO B-1219
SHEET NO 1 OF 3 SHEETS
SCALE: 1 INCH = 50 FT.

JOB NUMBER 8082
ALFRED JONES-COUNTY SURVEYOR
SURVEYED APR. 1935-SEPT. 1941
SURVEYED ON REQUEST OF THE COUNTY
FORESTER AND FIRE WARDEN UNDER RULE 21,
ORD. 929 BY LETTER DATED FEB. 23, 1935
AND AS AUTHORIZED BY THE BOARD OF
SUPERVISORS IN THEIR ORDER OF JAN. 13, 1930
BEARINGS ARE BASED ON THE BEARING OF
SOUTH LINE SEC. 14-T. 1 S.-R. 18 W. AS SHOWN
ON C. S. B.-993-1
F. B. 580-5-220
S. E. BUTLER
FIELD WORK BY T. J. STEVENSON
L. S. HAMMOND
OFFICE WORK BY K. R. M. PHERSON
C. W. COX
CHECKED BY D. M. FINLEY
SEE INDEX MAP ON SHEET NO 3

INDEX 31
I. M. 129-057

CSB-1219-1
A1 OF A4