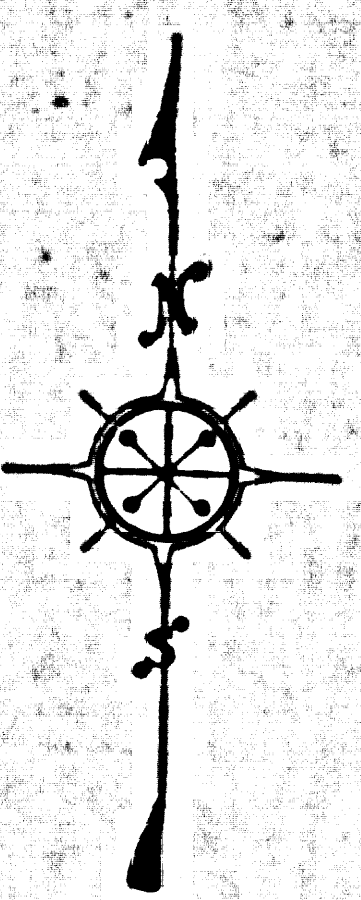


INDEX MAP OF
PEAK FIRE TRUCK TRAIL
MESA PEAK MOTORWAY
SCALE: 1 INCH = 800 FT.

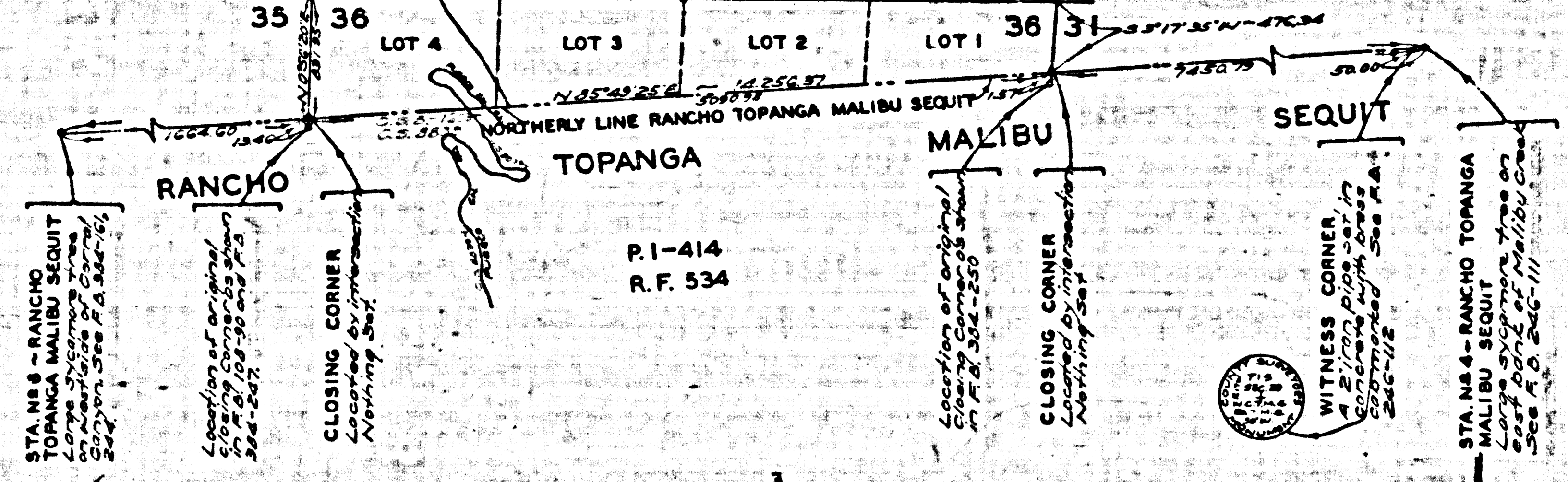


COUNTY OF LOS ANGELES
MAP OF
MESA PEAK FIRE TRUCK TRAIL
FROM
NORTHERLY LINE RANCHO TOPANGA MALIBU SEQUIT
TO
CORRAL CANYON ROAD
COUNTY SURVEYORS MAP NO B-1219
SHEET NO 3 OF 3 SHEETS
SCALE: 1 INCH = 50 FT.

JOB NUMBER 8082
ALFRED JONES-COUNTY SURVEYOR
SURVEYED APR. 1935- SEPT. 1941
SURVEYED ON REQUEST OF THE COUNTY
FORESTER AND FIRE WARDEN UNDER RULE 21,
ORD. 929 BY LETTER DATED FEB. 25, 1935
AND AS AUTHORIZED BY THE BOARD OF
SUPERVISORS IN THEIR ORDER OF JAN. 13, 1930
BEARINGS ARE BASED ON THE BEARING OF
SOUTH LINE SEC. 14-T. 1 S-R. 18 W AS SHOWN
ON C. S. B-693-1
F. B. 580-5-220
S. E. BUTLER
FIELD WORK BY T. J. STEVENSON
L. S. HAMMOND
OFFICE WORK BY K. R. M'PHERSON
C. W. COX
CHECKED BY D. M. FINLEY

INDEX 91
92
1 M 129-037

CSB-1219-3
A1 OF A4

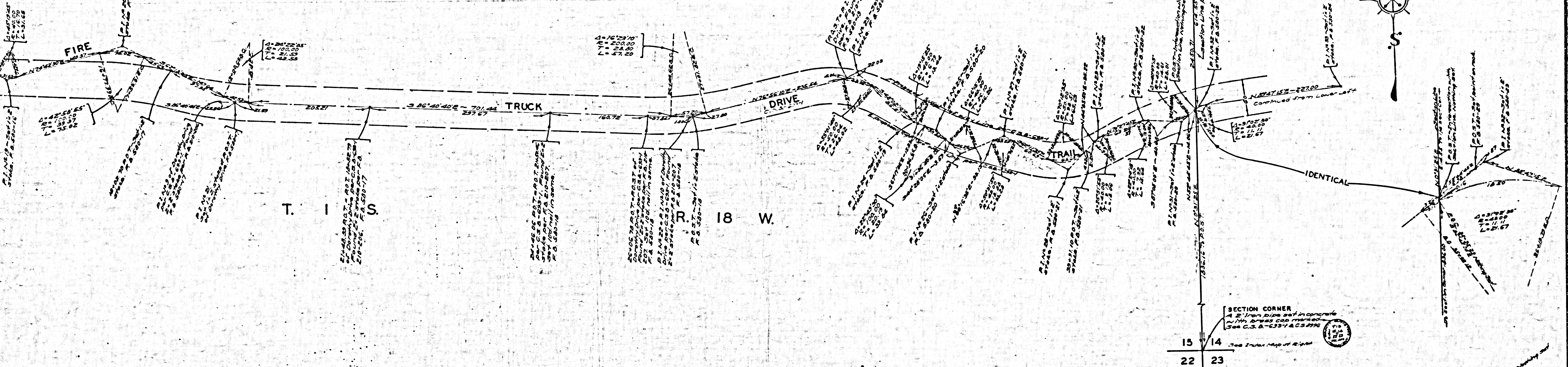
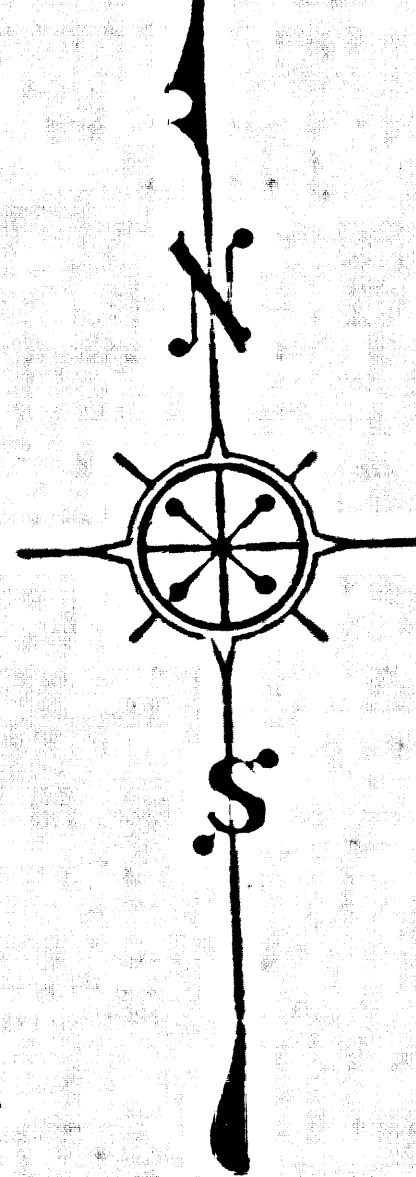


P. 1-414
R. F. 534

T. 1 S.

R. 18 W.

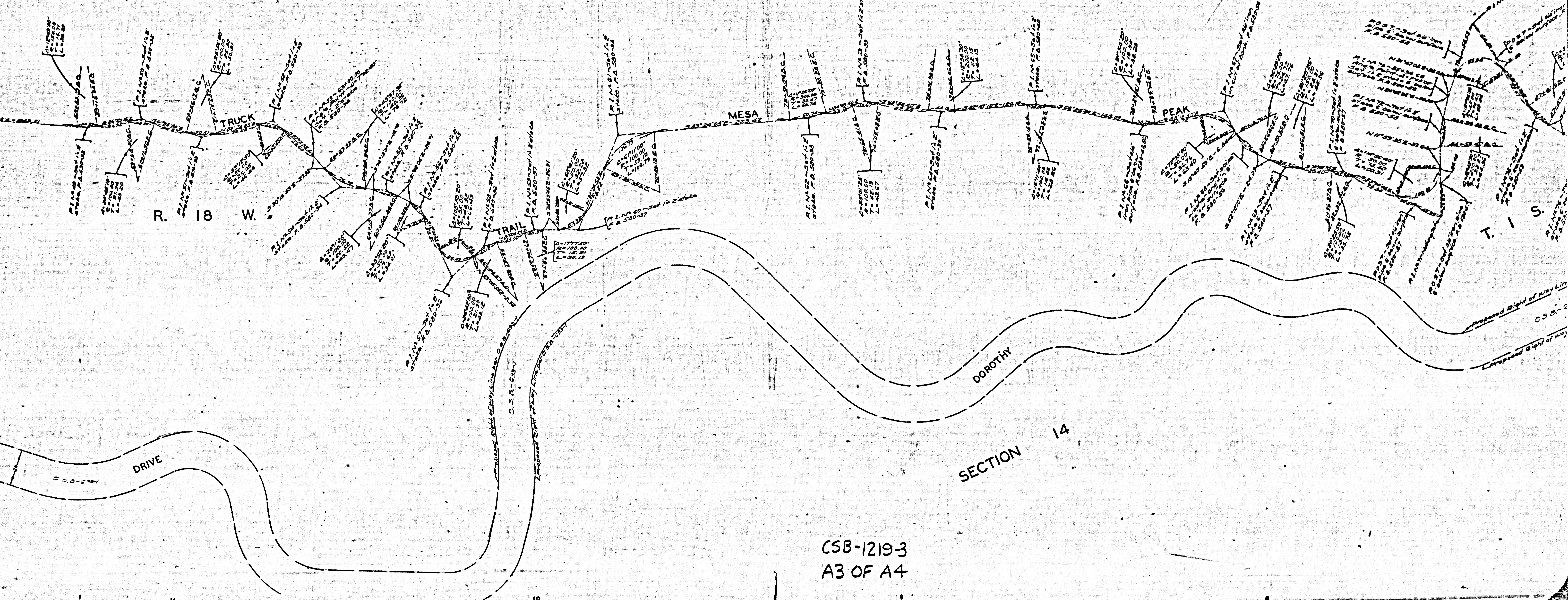
1/4 SECTION CORNER
A 2" iron pipe set in concrete
with brass cap marked
See C.S.B.-6937 & C.S.B.-6938
See Index Map of Right



T. 1 S.

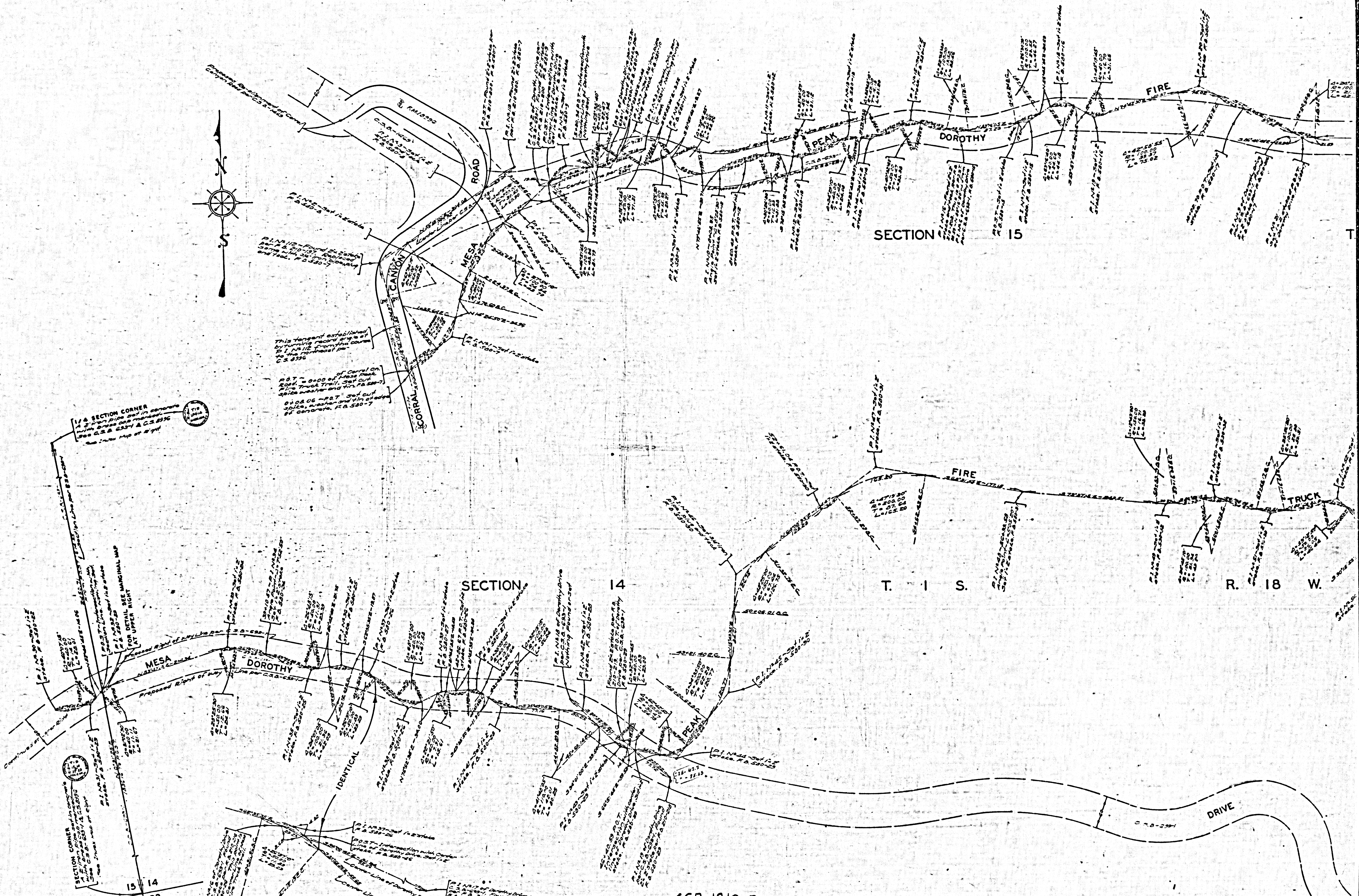
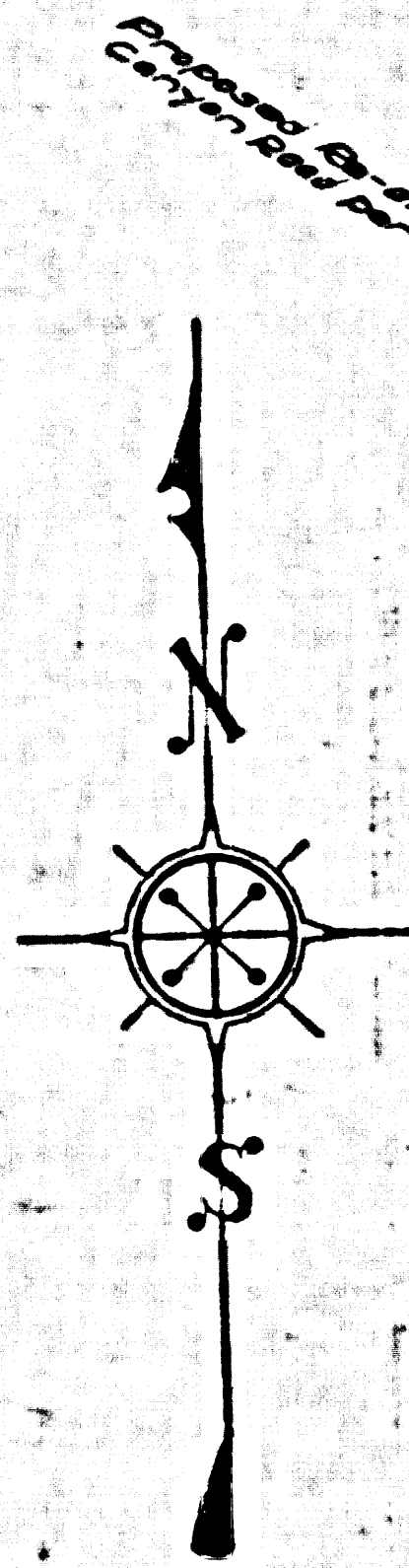
R. 18 W.

SECTION CORNER
A 2" iron pipe set in concrete
with brass cap marked
See C.S.B.-6937 & C.S.B.-6938
See Index Map of Right



SECTION 14

CSB-12193
A3 OF A4



1/4 SECTION CORNER
At E. 1/4 corner of Sec. 15, T. 1 S., R. 18 W.
C.S. 4356 & C.S. 4357
See Town Map of 1891

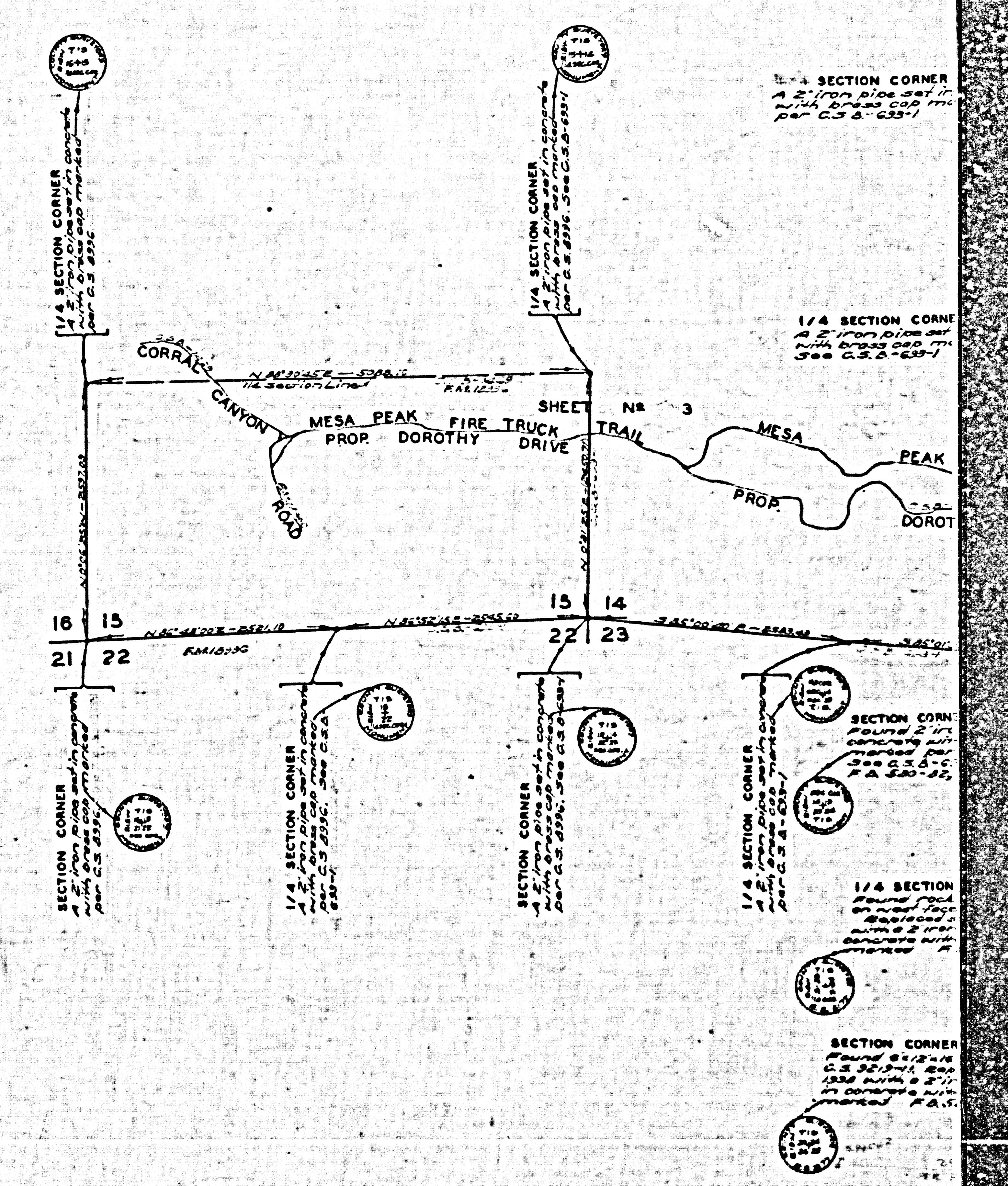
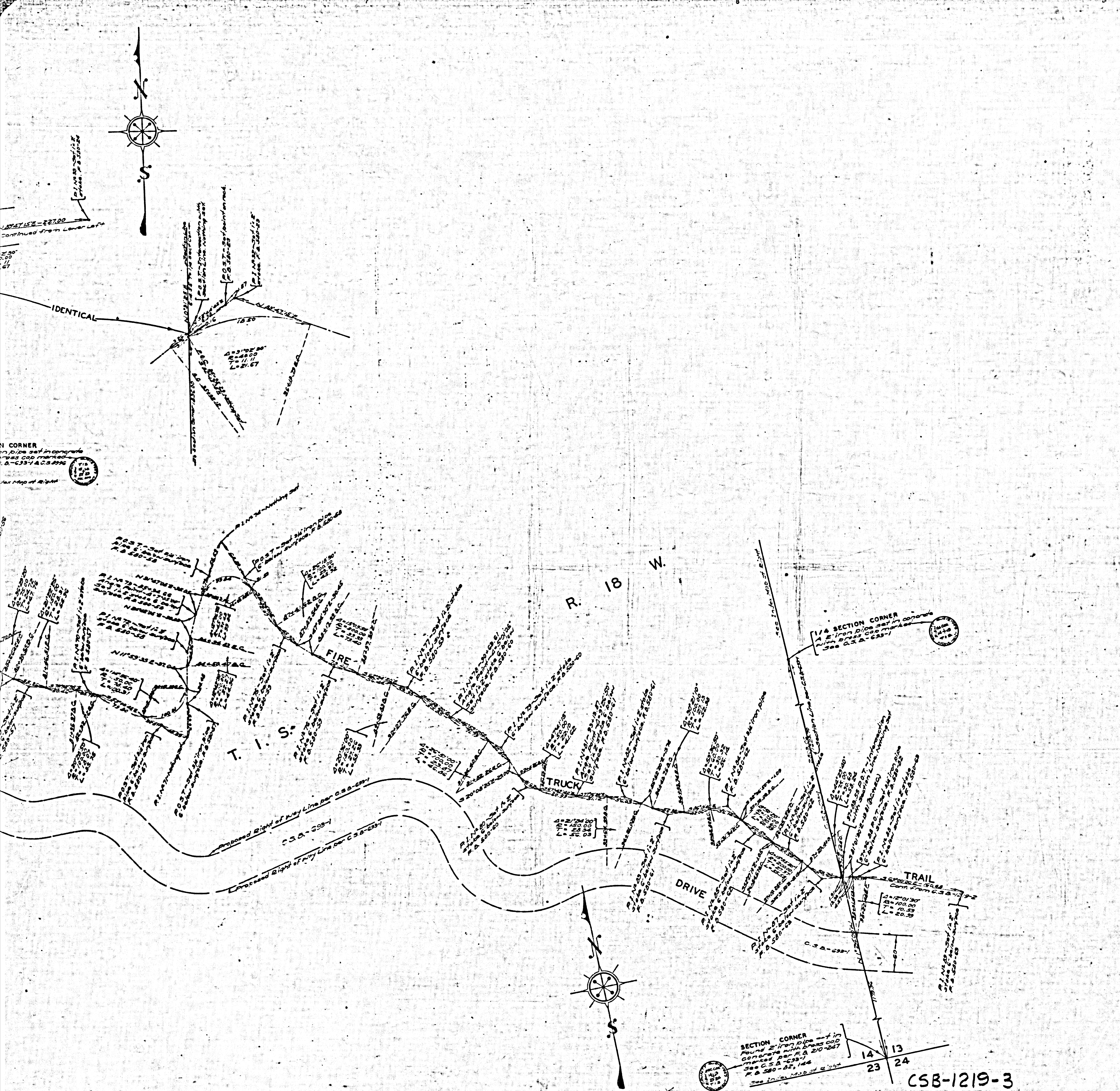
This tangent established
by turning record at 90° to
the right from the corner
to the southwest corner
C.S. 4356

SECTION CORNER
At E. 1/4 corner of Sec. 15, T. 1 S., R. 18 W.
C.S. 4356 & C.S. 4357
See Town Map of 1891

15 14
22 23

MARGINAL MAP
SCALE: 1" = 10 FT.

CSB-1219-3
A4 OF A4



INDEX MAP OF
MESA PEAK FIRE TRUCK TRAIL
AND MESA PEAK MOTORWAY
SCALE: 1 INCH = 600 FT.

SECTION CORNER
Found 2" iron pipe set in concrete
with brass cap marked
C.S.B. 1219-3
M.A. 580-144
See map of sheet
CSB-1219-3
A2 OF A4

STA 188 - PANCHO MALIBU SECUIT
TOPANCA MALIBU SECUIT