

MAP OF
SLOAN CANYON ROAD
 FROM
PARKER ROAD
 TO
HASLEY CANYON ROAD
 COUNTY SURVEYORS MAP NO B-1224

SHEET NO 1 OF 2 SHEETS
 SCALE - 1 INCH = 100 FT.

JOB NUMBER 8151
 ALFRED JONES - COUNTY SURVEYOR
 SURVEYED - FEB. TO OCT. 1936.
 SURVEYED UNDER INSTRUCTIONS OF THE
 BOARD OF SUPERVISORS PER ORDER DATED
 MAY 7 1936.
 BEARINGS ARE BASED ON THE BEARING OF
 SECTION LINES AS SHOWN ON C.S. B-1226
 F.B. 857-12-60 & RD. DEPT. F. B. F. X. 211-2-22
 ROAD SURVEYED BY L.A. COUNTY RD. DEPT. &
 SECTION LINES BY COUNTY SURVEYOR.
 FIELD WORK BY... F.C. HOWARD.
 OFFICE WORK BY... K.R.M. PHERSON,
 F.A. WOOD.
 CHECKED BY... K.R.M. PHERSON.

SHT. 17

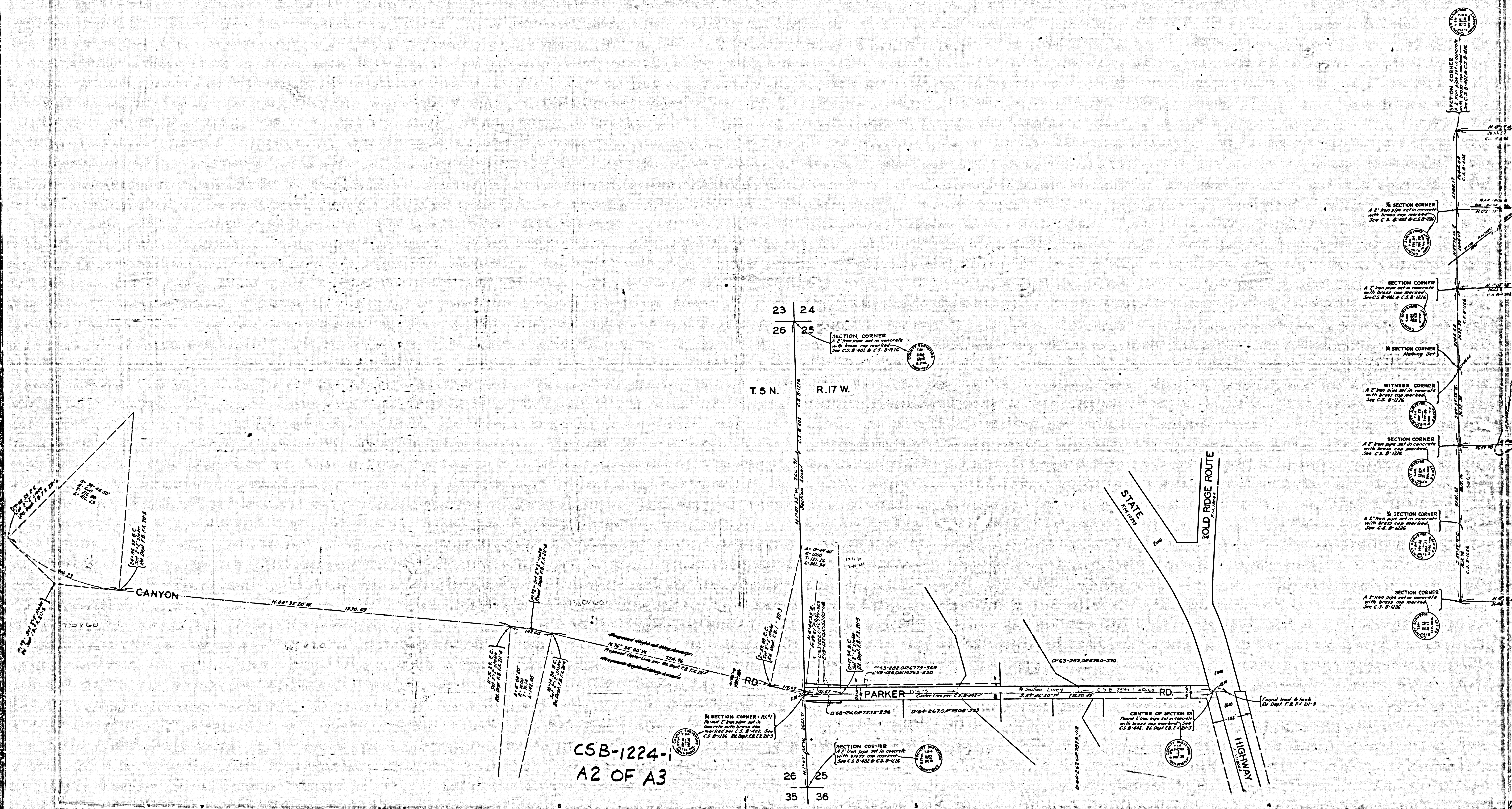
OLD RIDGE ROUTE

MARGINAL INDEX MAP
 SCALE - 1" = 1000'

CSB-1224-1
 A1 OF A3

FOR BLUE PRINTING
 WIDTH OF MAP = 40 INCHES
 LENGTH OF MAP = 105 FEET
 AREA/FOOT LENGTH = 2.5
 TOTAL AREA OF MAP = 28

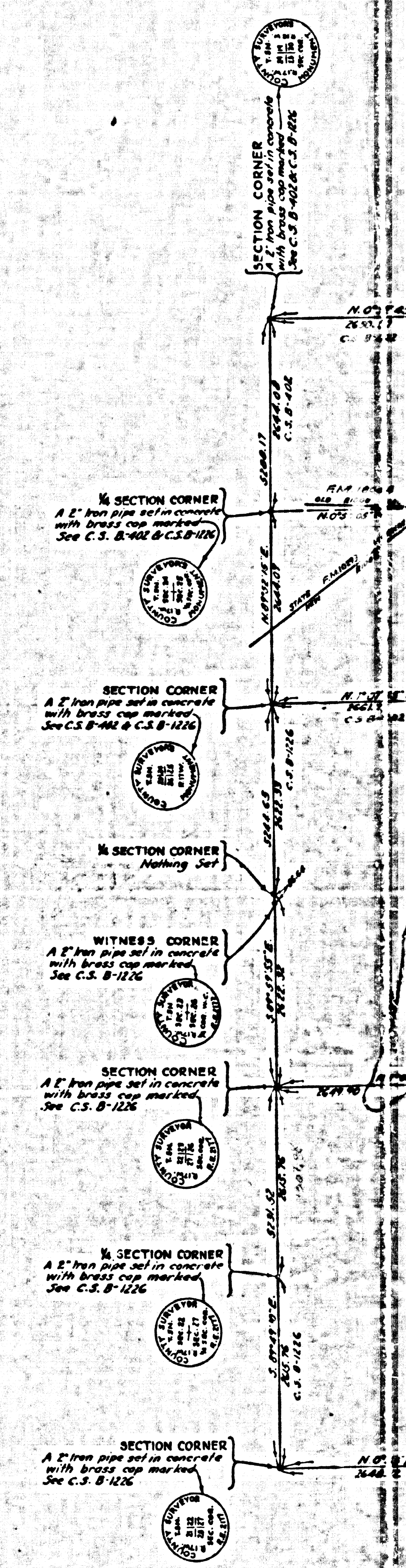


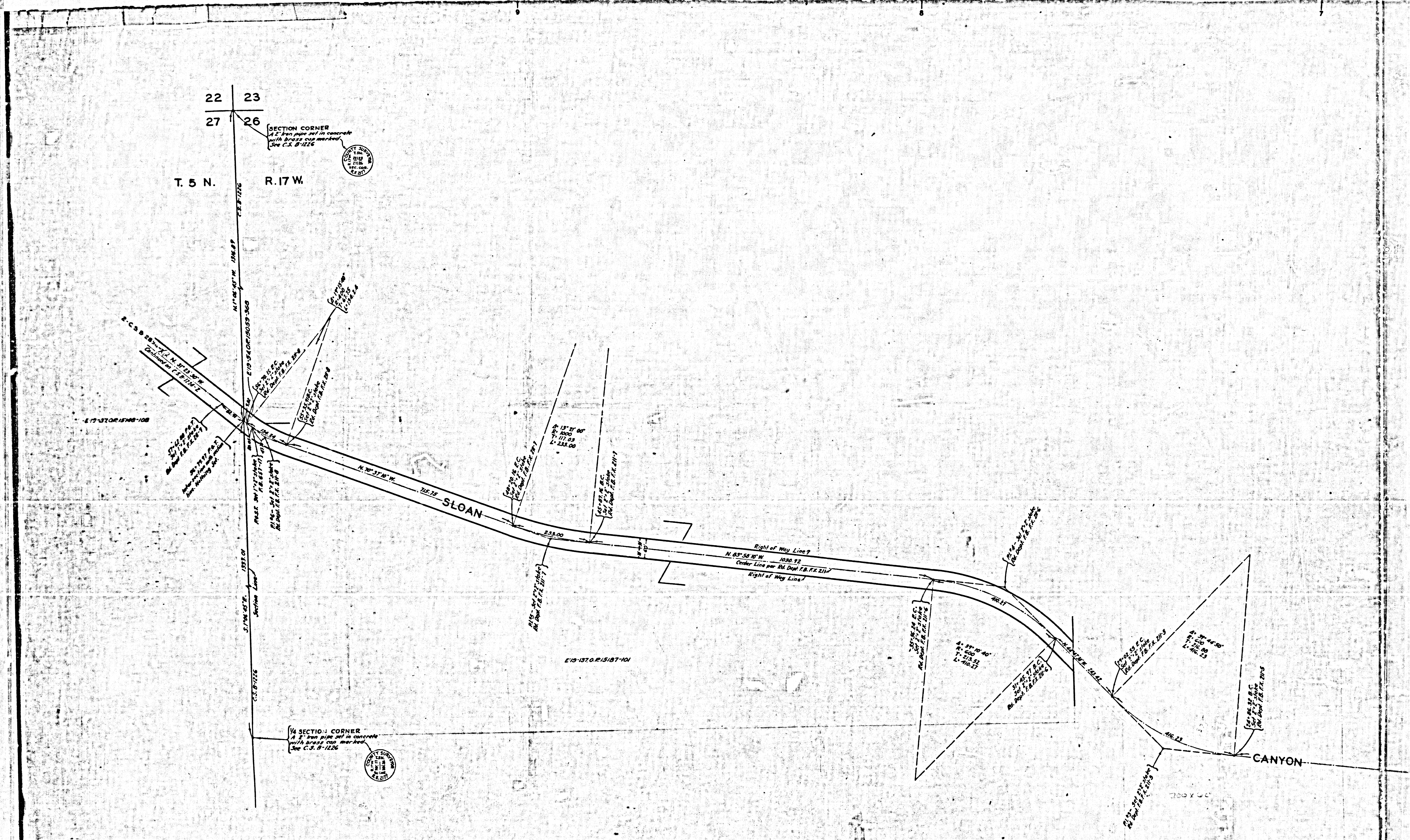


CSB-1224-1
A2 OF A3

23 24
26 25

26 25
35 36





22 23
27 26

T. 5 N. R. 17 W.

SECTION CORNER
A 2" iron pipe set in concrete
with brass cap marked
See C.S. 8-1226

1/4 SECTION CORNER
A 2" iron pipe set in concrete
with brass cap marked
See C.S. 8-1226

CSB-1224-1
A3 OF A3