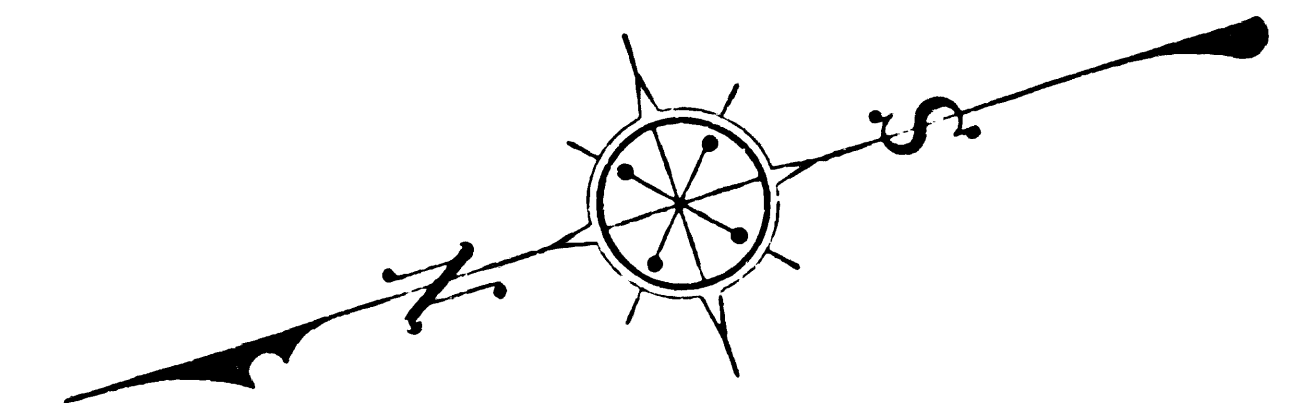
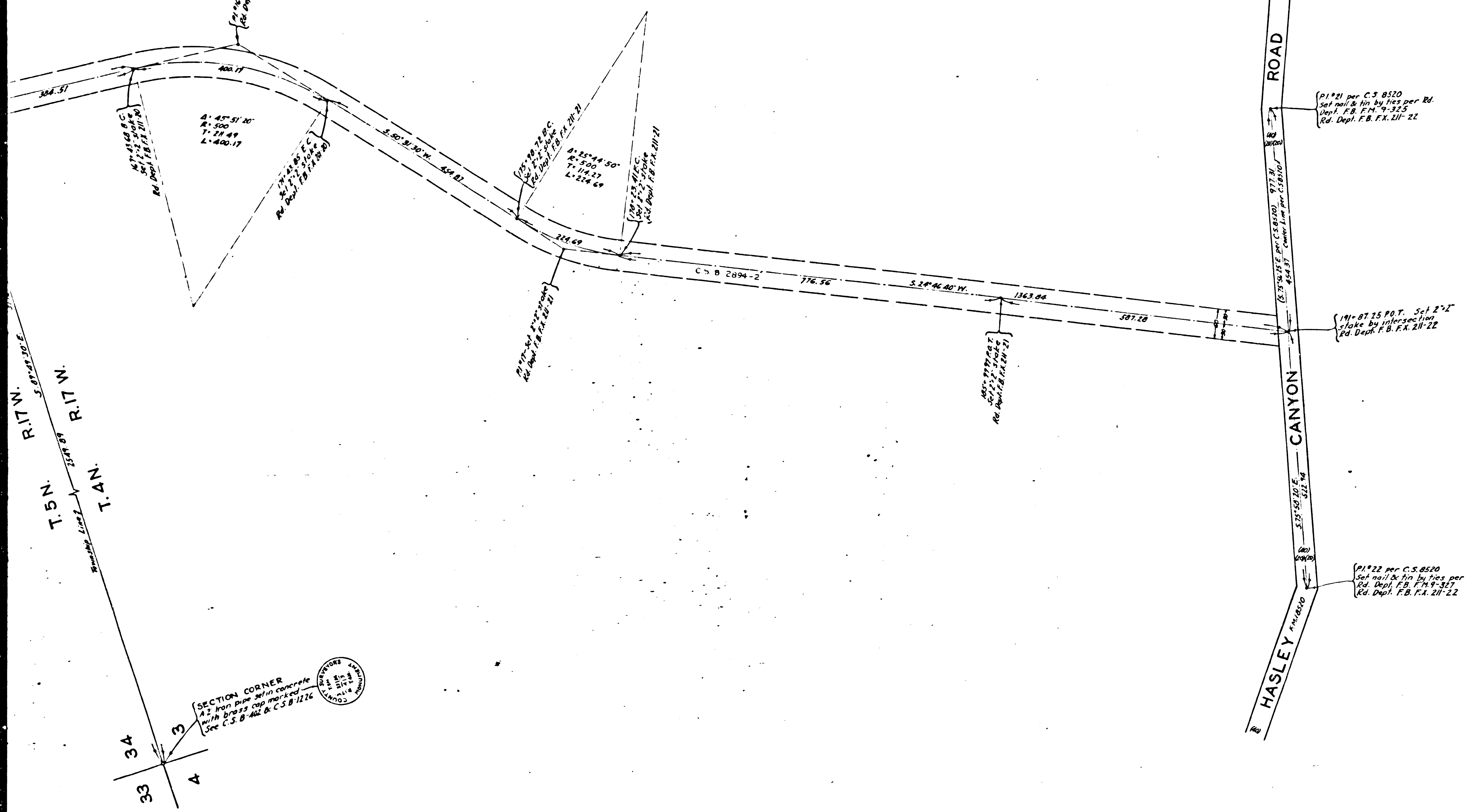


NER
 1/2 concrete
 1/2 iron
 1/2 CS B 116



MAP OF
SLOAN CANYON ROAD
 FROM
 PARKER ROAD
 TO
HASLEY CANYON ROAD
 COUNTY SURVEYORS MAP NO 2-1224
 SHEET NO 2 OF 2 SHEETS
 SCALE - 1 INCH = 100 FT.

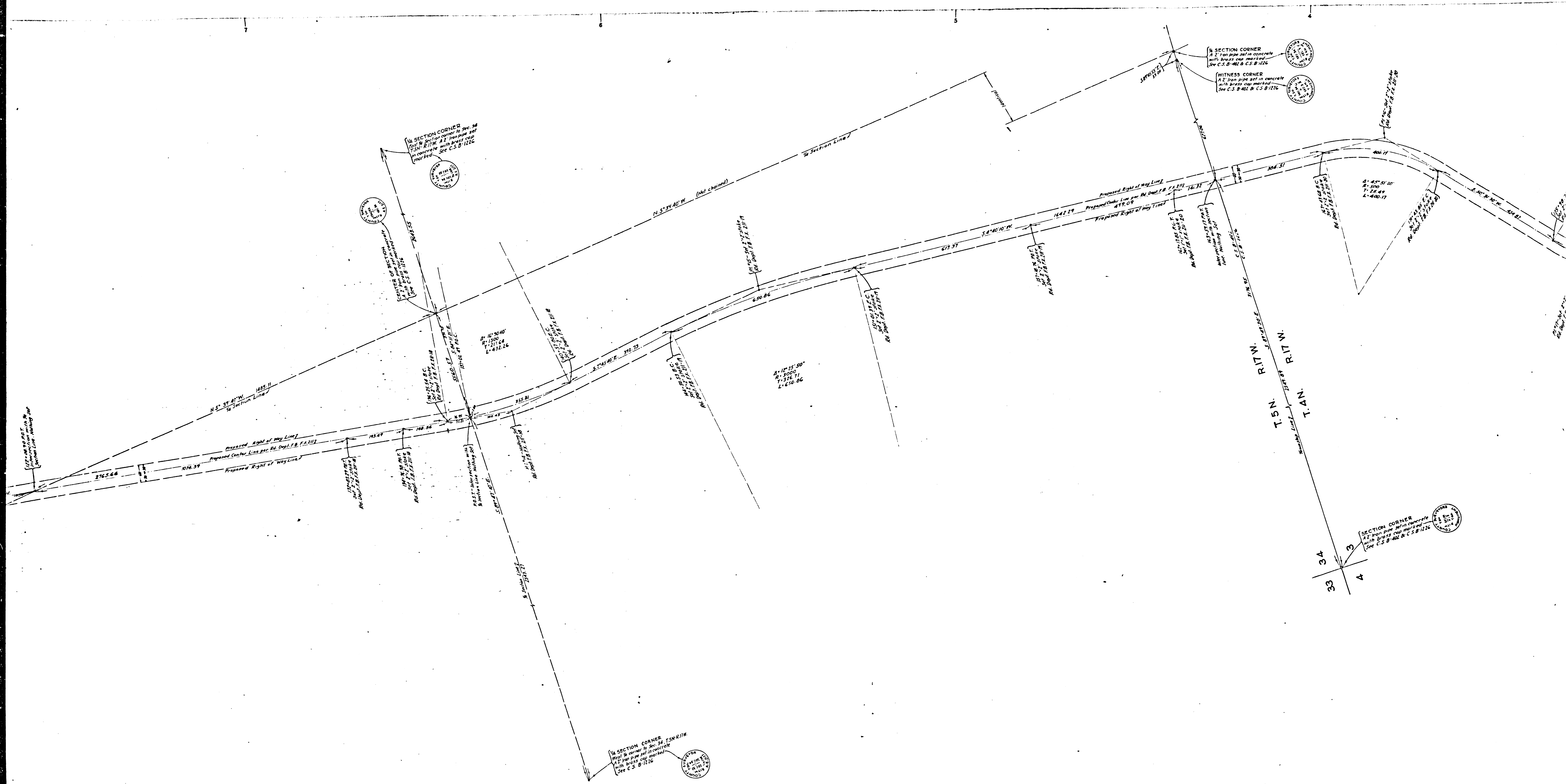
JOB NUMBER 8151
 ALFRED JONES - COUNTY SURVEYOR
 SURVEYED - FEB. TO OCT. 1936.
 SURVEYED UNDER INSTRUCTIONS OF THE
 BOARD OF SUPERVISORS PER ORDER DATED
 MAY 7 1936.
 BEARINGS ARE BASED ON THE BEARING OF
 SECTION LINES AS SHOWN ON C.S. B-1226
 F.B. 657-12-60 & RD. DEPT. F. B. F. X. 211-2-22
 ROAD SURVEYED BY L.A. COUNTY RD. DEPT. &
 SECTION LINES BY COUNTY SURVEYOR.
 FIELD WORK BY... F.C. HOWARD.
 OFFICE WORK BY... K.R.M. PHERSON.
 F.A. WOOD.
 CHECKED BY... K.R.M. PHERSON.

INDEX 63-17

FIRE CISTERN SITE NO. 34
 ADDED NOV. 1956 C.E.D.

CSB-1224-2
 A1 OF A4

FOR BLUE PRINTING
 WIDTH OF MAP = 30 INCHES
 LENGTH OF MAP = 132 FEET
 AREA/ FOOT LENGTH = 25
 TOTAL AREA OF MAP = 3300



SECTION CORNER
 2' from corner in Sec. 34
 T.5N. R.17W. A 2' from pipe set in concrete
 with brass cap marked
 See C.S. B-401 & C.S. B-1226

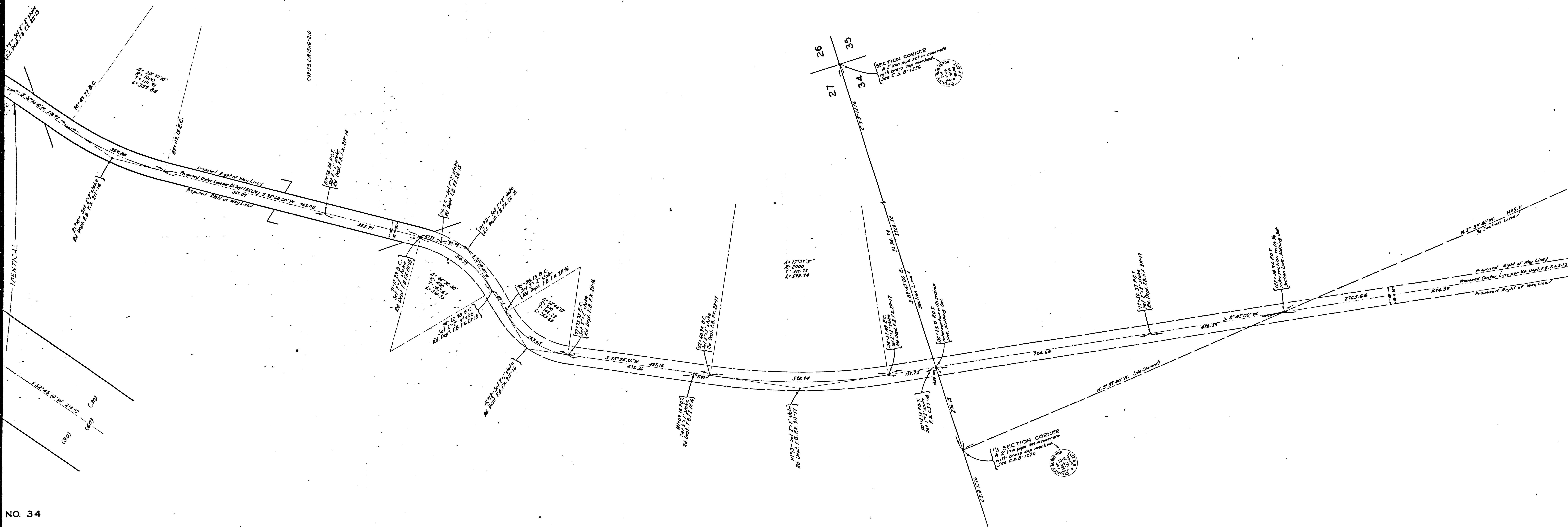
SECTION CORNER
 2' from pipe set in concrete
 with brass cap marked
 See C.S. B-401 & C.S. B-1226

SECTION CORNER
 2' from pipe set in concrete
 with brass cap marked
 See C.S. B-401 & C.S. B-1226

SECTION CORNER
 2' from pipe set in concrete
 with brass cap marked
 See C.S. B-401 & C.S. B-1226

CSB-1224-2
 A2 OF A4

SECTION CORNER
A 2" Iron pipe set in concrete
with brass cap marked
See C.S. B-1226



SECTION CORNER
A 2" Iron pipe set in concrete
with brass cap marked
See C.S. B-1226

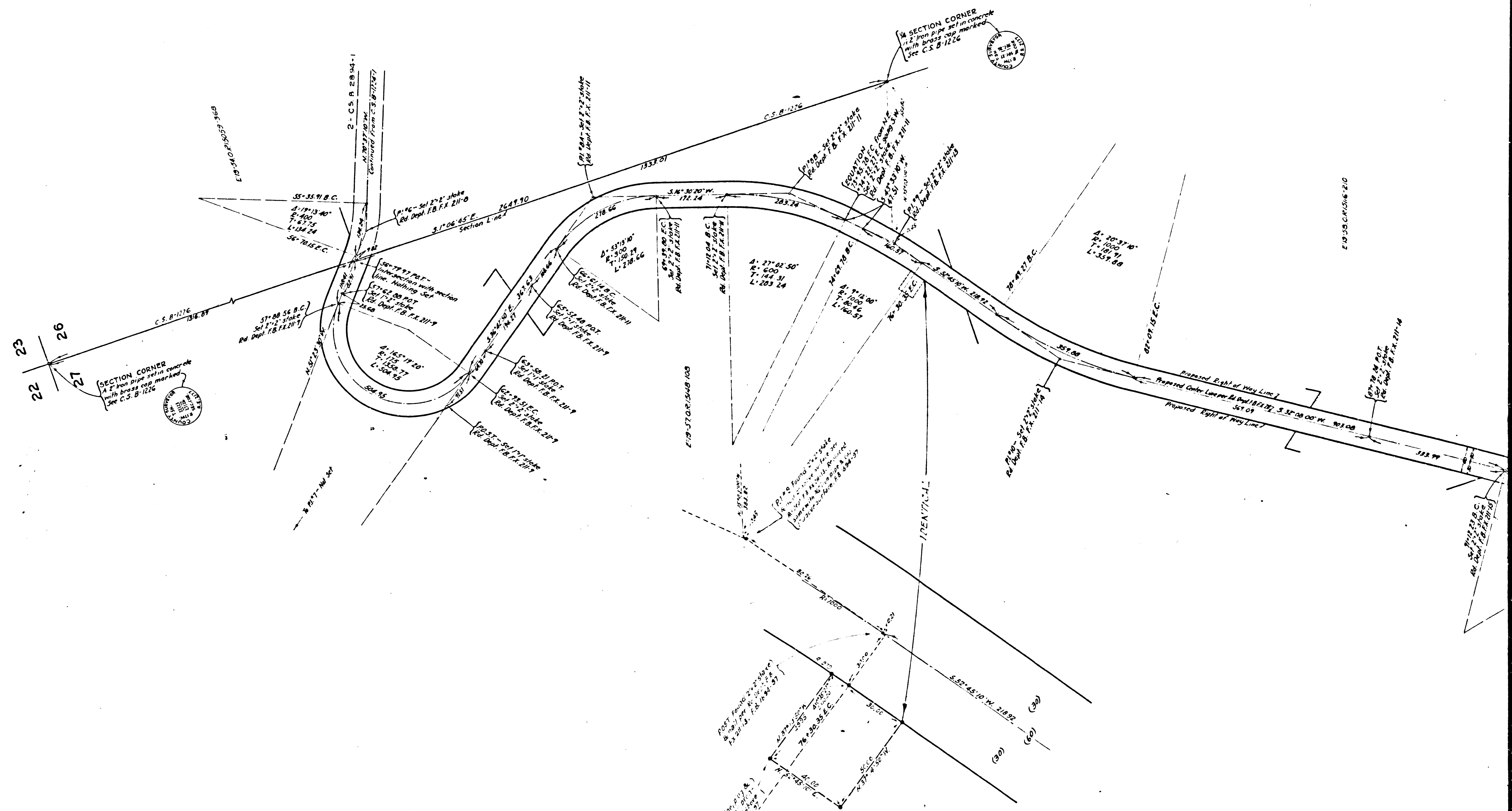
SECTION CORNER
A 2" Iron pipe set in concrete
with brass cap marked
See C.S. B-1226

NO. 34

WHERE
DOWN
CALL

CSB-1224-2
A3 OF A4

CONTRACT SURVEYORS MAP No. 155 SHEET No. 5 OF 5 SHEETS
CONTRACT SURVEYORS MAP No. 155



MARGINAL MAP
SHOWING
FIRE CISTERN SITE NO. 34
(SLOANE)
SCALE: 1 INCH = 20 FT.
FIELD WORK BY W.S. COWHERD
OFFICE WORK BY C.E. DROWN
CHECKED BY C.J. GALLI

CSB-1224-2
A4 OF A4