

MAP OF  
**SIXTH STREET**  
 FROM  
**BANDINI STREET**  
 TO  
**WEYMOUTH AVENUE.**  
 COUNTY SURVEYORS MAP NO B-1225  
 SCALE - 1 INCH = 50 FT.

JOB NUMBER 8162.  
 ALFRED JONES - COUNTY SURVEYOR.  
 SURVEYED - JULY - AUGUST, 1936.  
 SURVEYED UNDER INSTRUCTIONS OF THE  
 BOARD OF SUPERVISORS PER ORDER DATED  
 JULY 6, 1936.  
 BEARINGS ARE BASED ON THE BEARING OF  
 WEYMOUTH AVENUE PER C.S. 8960, SHEET 3  
 F. B. 501 - 109 - 128.  
 FIELD WORK BY... L. D. MOORE.  
 OFFICE WORK BY... J. D. PRICE.  
 CHECKED BY... A. A. ROESER.

INDEX 29  
 FOR PROFILE SEE C.S.B-1242 SHT. 1  
 FOR CROSS SECTIONS SEE C.S.B-1242 SHTS. 2 & 3

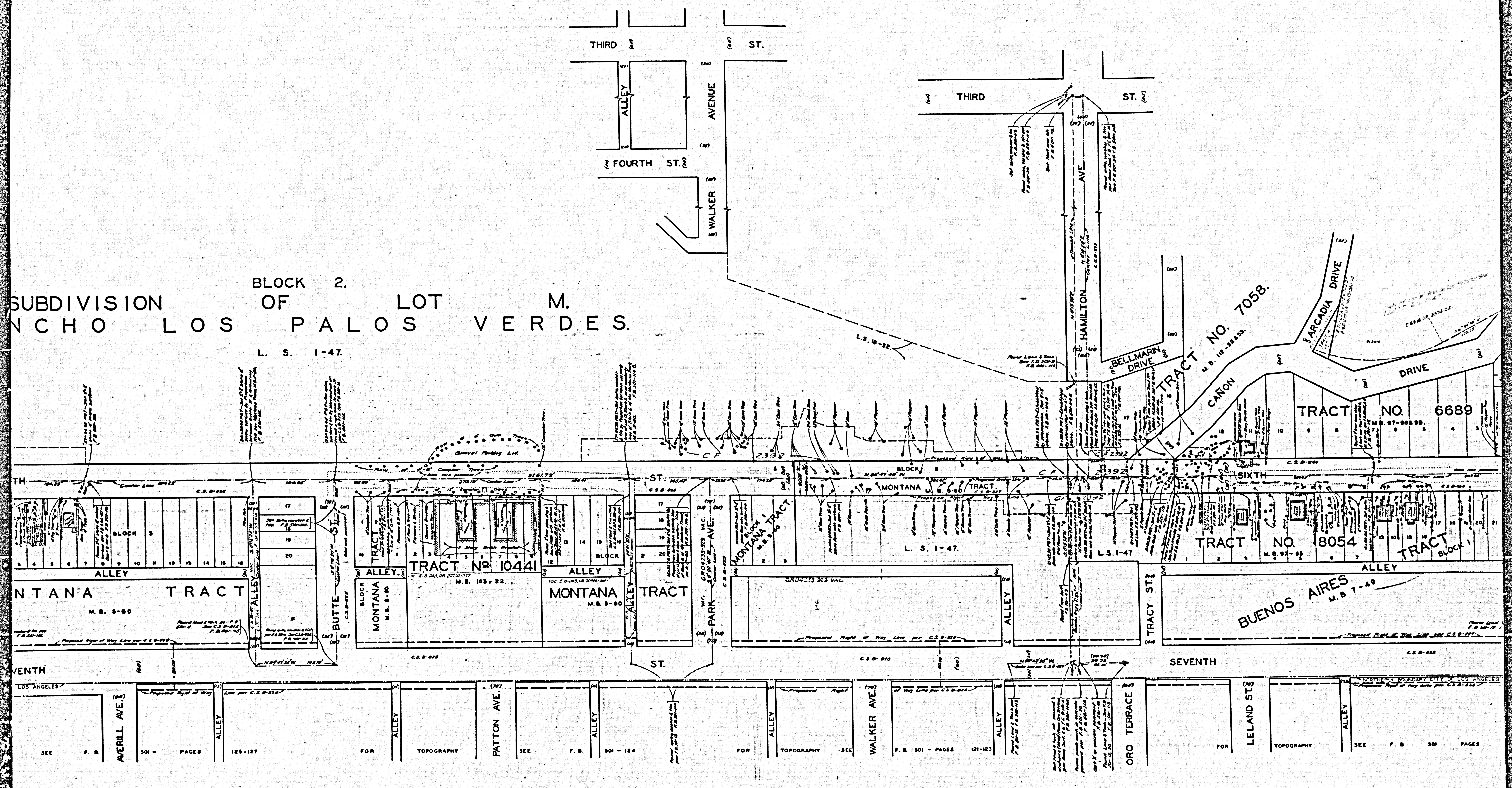
FOR BLUE PRINTING  
 WIDTH OF MAP = 30 INCHES  
 LENGTH OF MAP = 9 FEET  
 AREA / FOOT LENGTH = 3 FT.  
 TOTAL AREA OF MAP = 27 SQ. FT.

CSB-1225  
 A1 OF A3

CORVALL PHOTOGRAPH No. 148 B-1552

CORVALL PHOTOGRAPH No. 148 B-1552

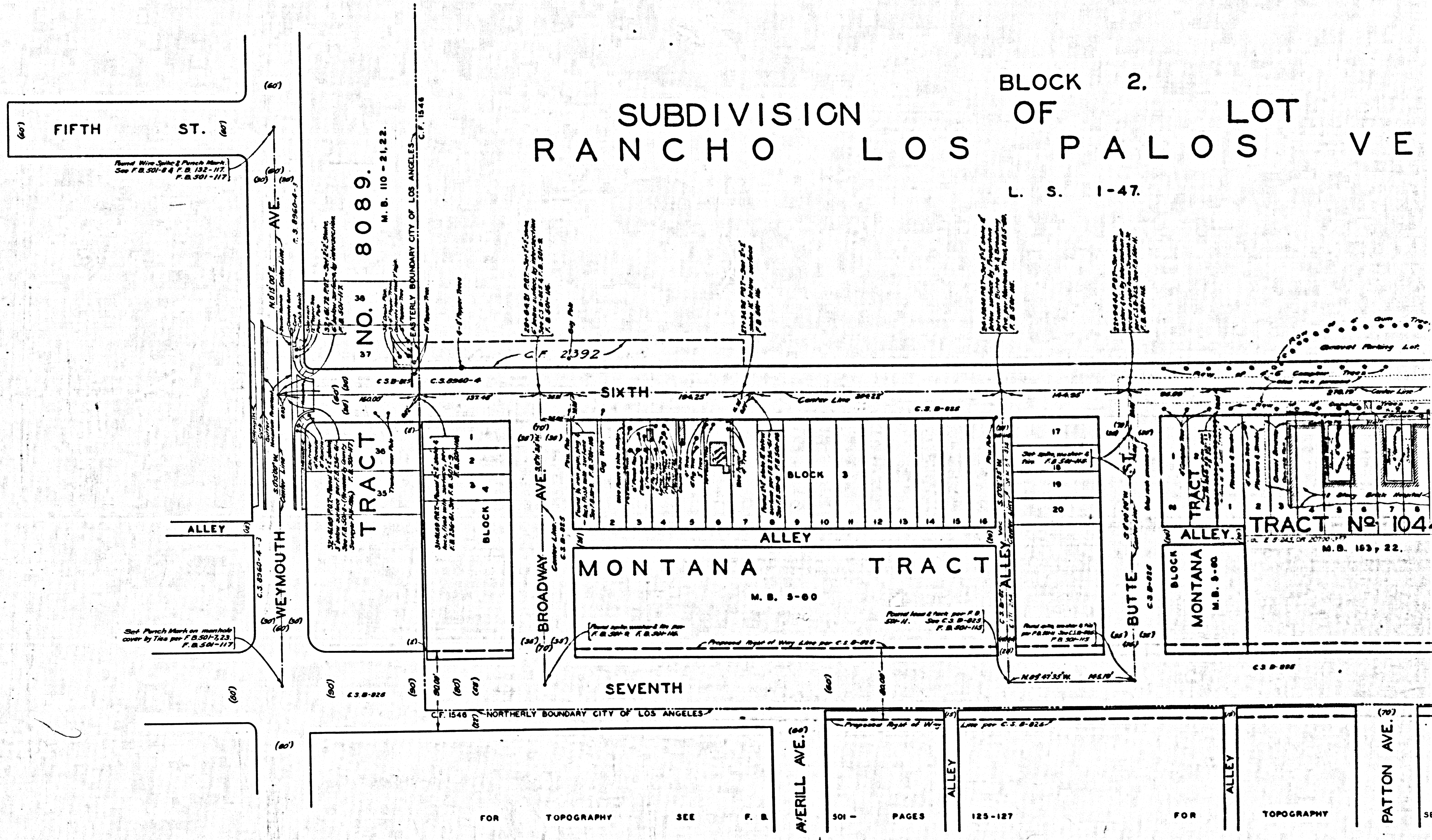
SUBDIVISION OF LOT M. ANCHO LOS PALOS VERDES. BLOCK 2. L. S. 1-47.



CSB-1225  
A2 OF A3

COMPLI SUBALLOS WAB No B-1353

COMPLI SUBALLOS WAB No B-1353



CSB-1225  
A3 OF A3