

CROSS SECTIONS FOR
GRADING PLAN "E"
 FOR A PORTION OF THE
CIVIC CENTER
 IN THE AREA BOUNDED BY
SUNSET BLVD. - HILL ST.
CALIFORNIA ST. & SPRING ST.

COUNTY SURVEYORS MAP NO B-1227
 SHEET NO 10 OF 10 SHEETS
 SCALE - 1 INCH = 20 FT.

JOB NUMBER 7687
 ALFRED JONES - COUNTY SURVEYOR
 SURVEYED SEPTEMBER 1932 - JUNE 1938
 SURVEYED UNDER INSTRUCTIONS OF THE
 BOARD OF SUPERVISORS PER ORDER DATED
 JUNE 22, 1932

PLANE TABLE TOPOGRAPHY
 FIELD WORK BY T. M. WALSH
 H. F. EVANS
 OFFICE WORK BY A. E. TIMMONS
 M. D. DARLING
 CHECKED BY M. D. DARLING
 A. E. TIMMONS

FOR GRADING PLAN SEE C.S. B-1227 SHEET 8

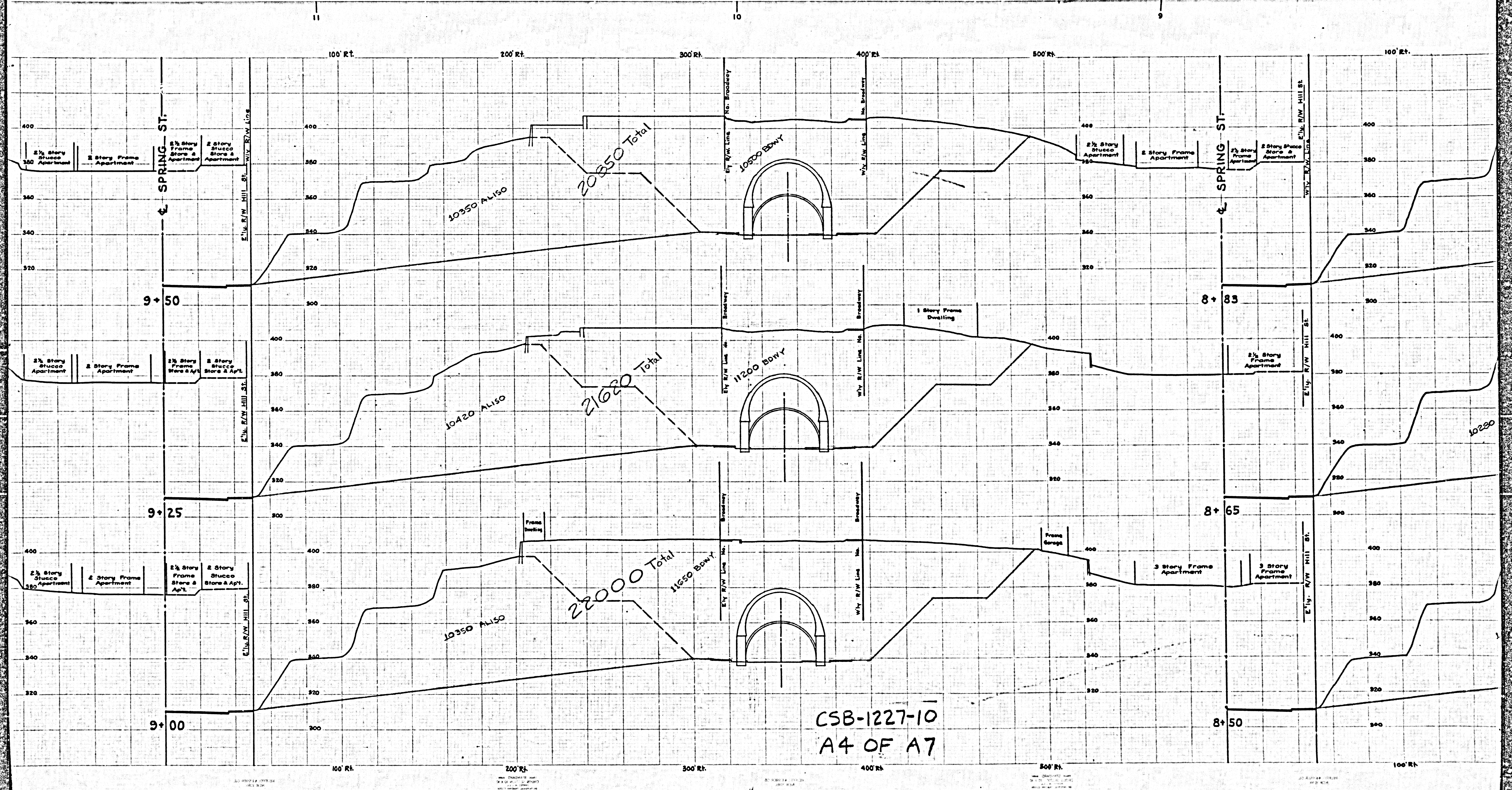
DATUM
 ELEVATIONS SHOWN HEREON ARE BASED
 ON THE 1924 U.S.C. & G.S. ADJUSTMENT
 OF U.S.C. & G.S. M. 738 (U.S. 404)

Note: Sections extended to the
 Ely R/W line of Hill St. 11-27-40.

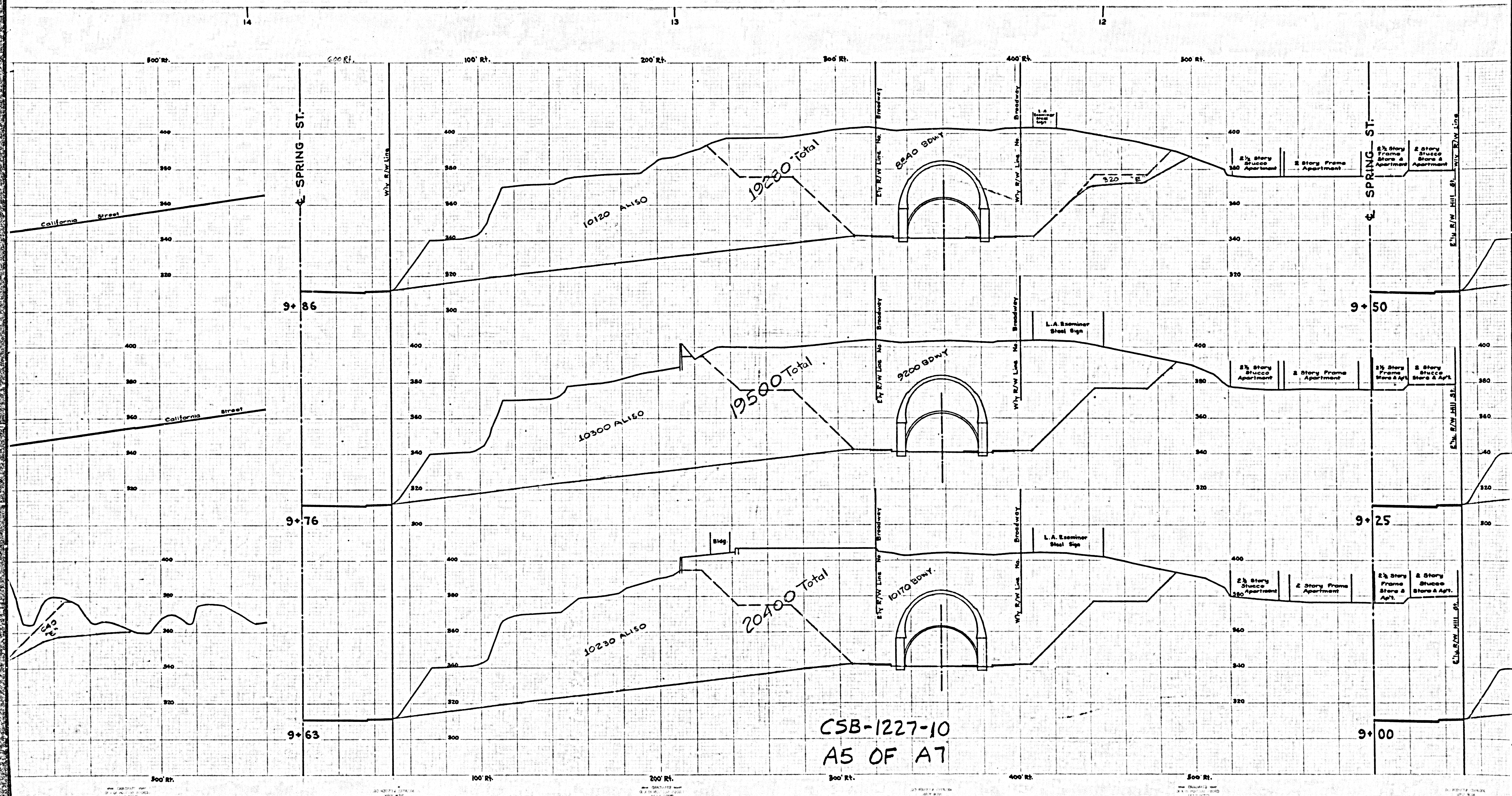
CSB-1227-10
 A1 OF A7

COUNTY SURVEYORS MAP NO B-1227 SHEET NO 10 OF 10 SHEETS

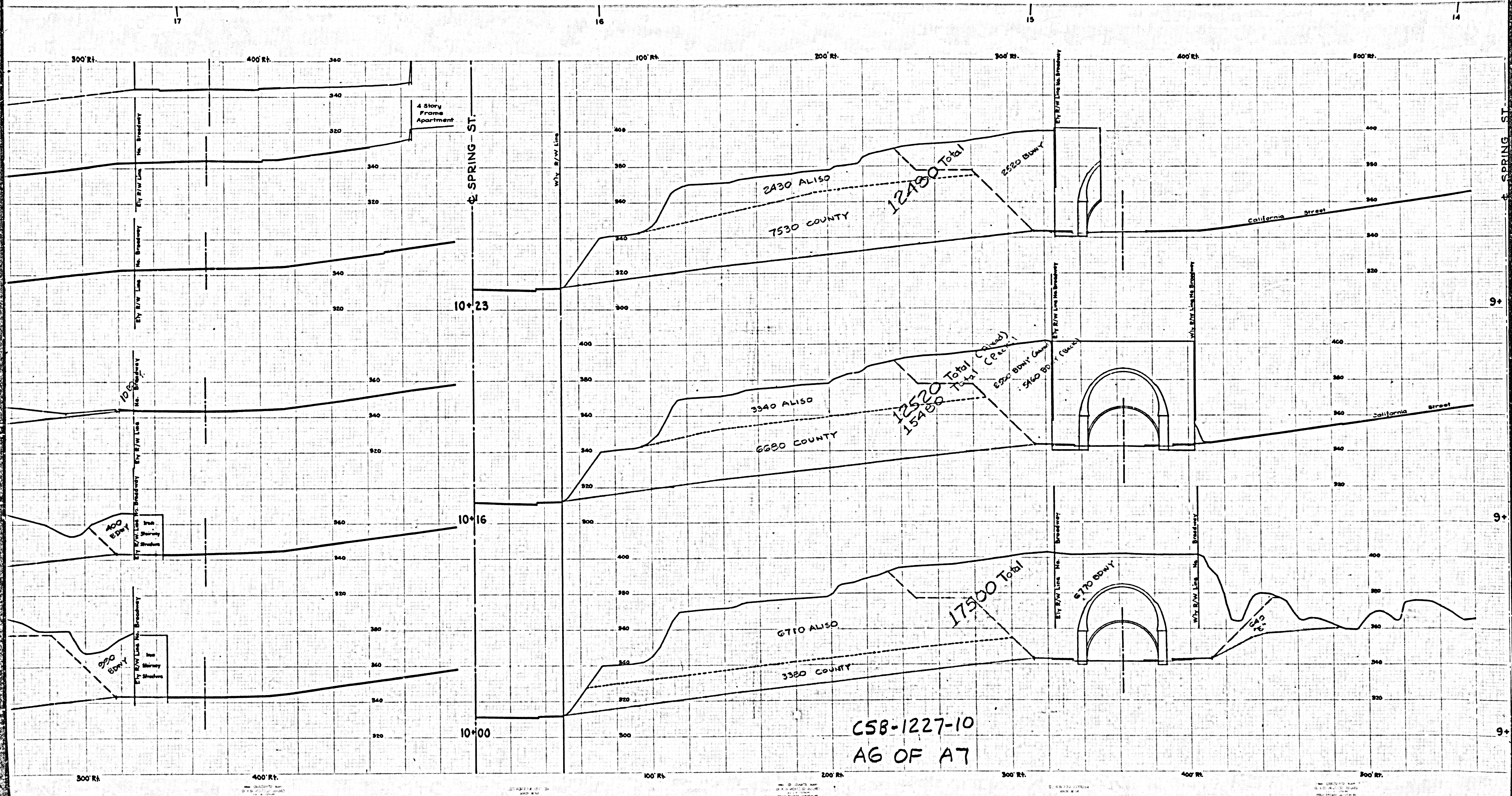
SHEET NO 10 OF 10 SHEETS
 COUNTY SURVEYORS MAP NO B-1227



CSB-1227-10
A4 OF A7



CSB-1227-10
A5 OF A7



CSB-1227-10
AG OF A7

17

16

15

14

500' Rt.

400' Rt.

300

100' Rt.

200' Rt.

300' Rt.

400' Rt.

500' Rt.

SPRING ST.

SPRING ST.

10+23

9+

10+16

9+

10+00

9+

300' Rt.

400' Rt.

100' Rt.

200' Rt.

300' Rt.

400' Rt.

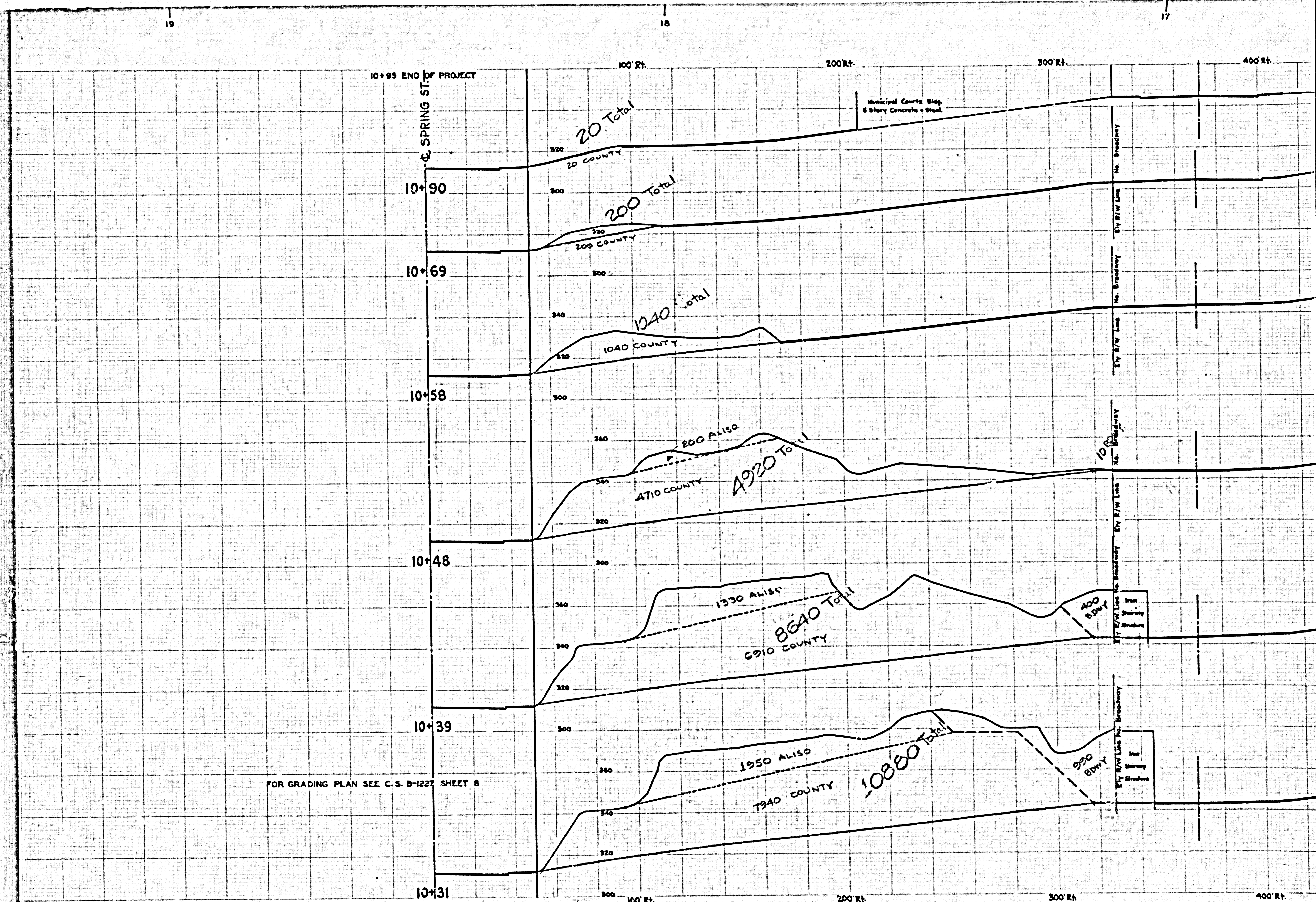
500' Rt.

17

16

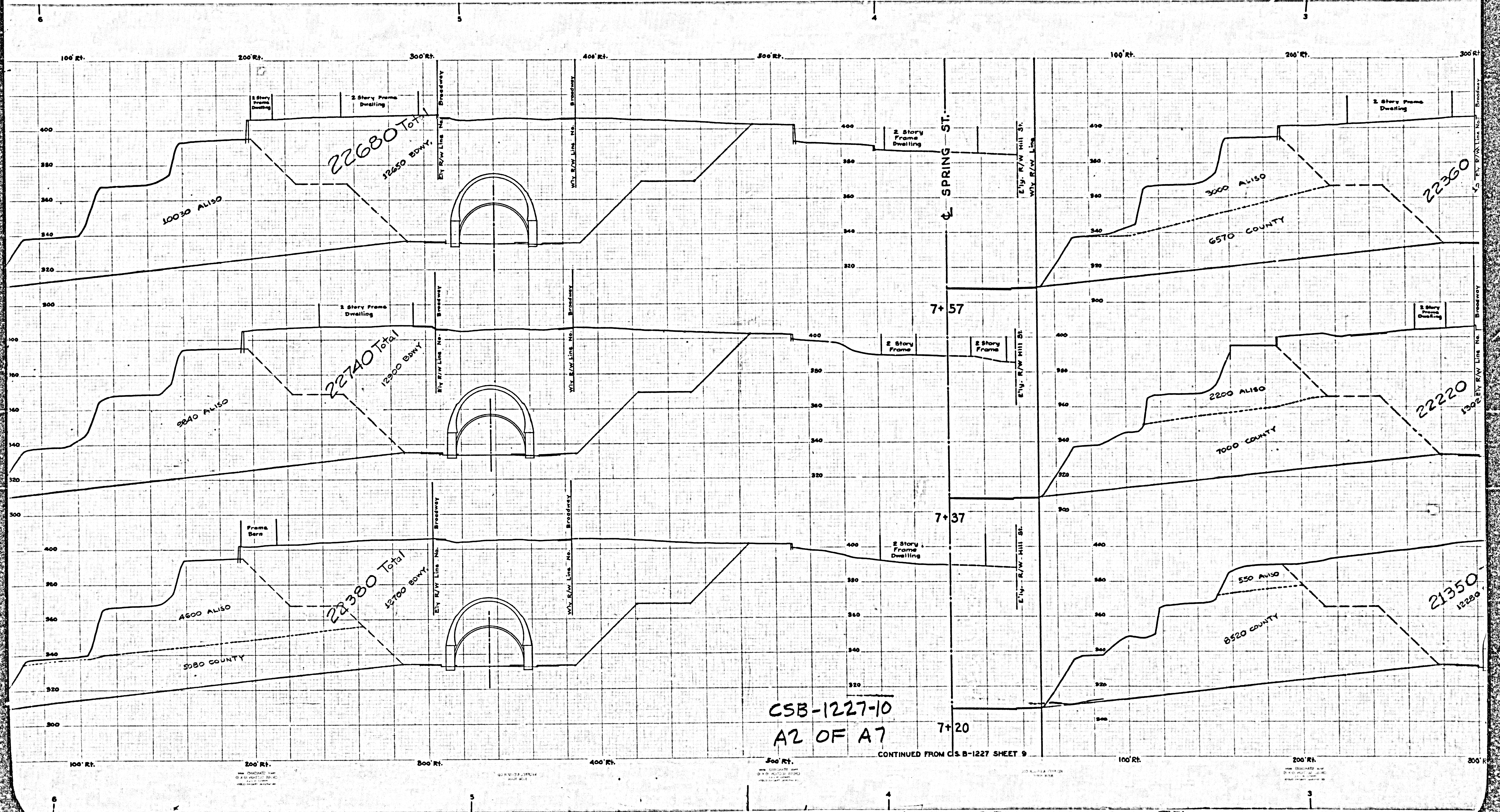
15

14



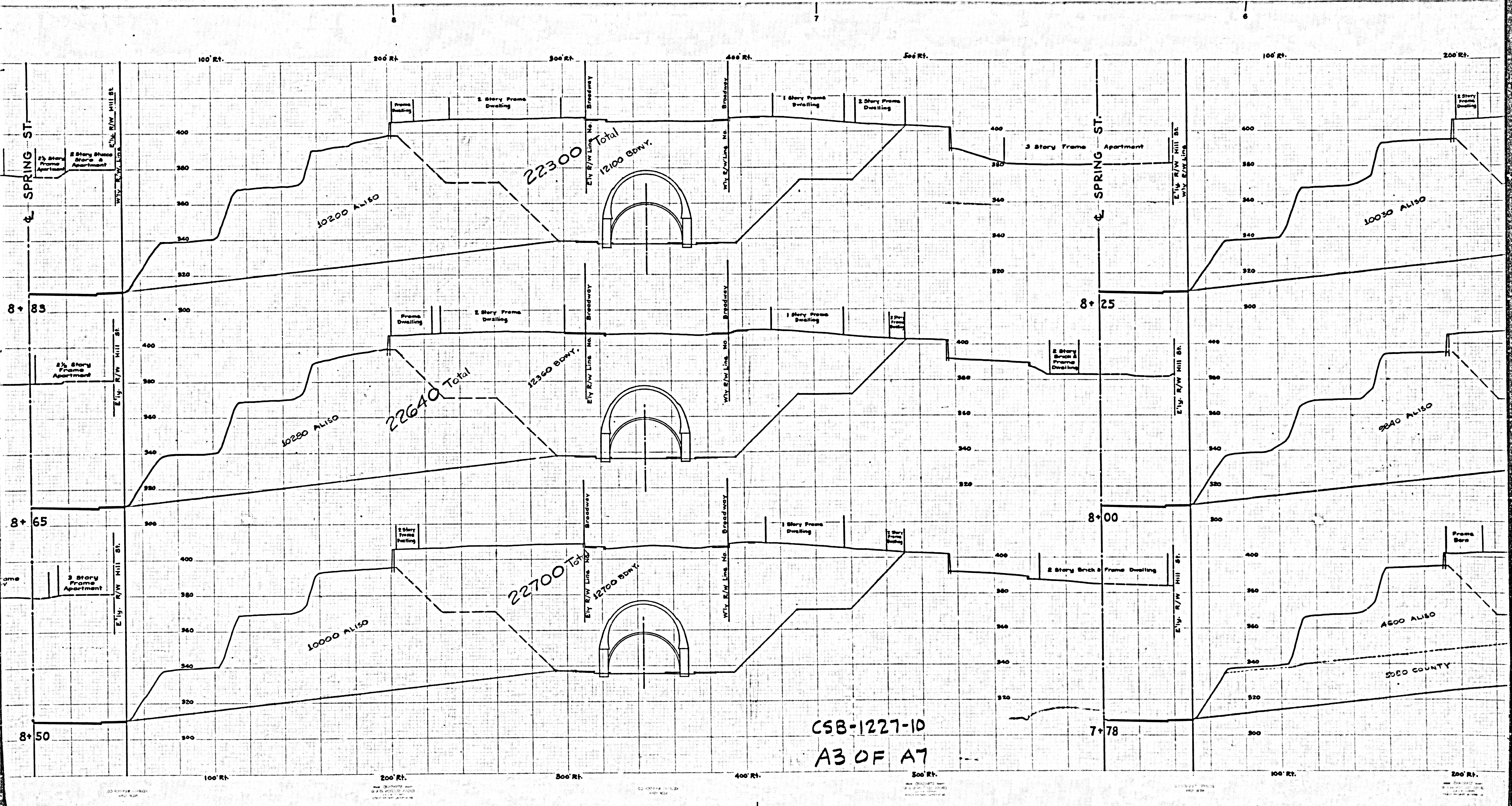
FOR GRADING PLAN SEE C. S. B-1227 SHEET 8

CSB-1227-10
A7 OF A7



CSB-1227-10
A2 OF A7

CONTINUED FROM CSB-1227 SHEET 9



CSB-1227-10
A3 OF A7

100' Rt. 200' Rt. 300' Rt. 400' Rt. 500' Rt. 100' Rt. 200' Rt.

8+83

8+65

8+50

8+25

8+00

7+78

22300 Total
12100 BDN.Y.

22640 Total
12360 BDN.Y.

22700 Total
12700 BDN.Y.

10030 ALISO

10280 ALISO

10000 ALISO

9840 ALISO

4500 ALISO

5000 COUNTY

10200 ALISO

SPRING ST.

SPRING ST.

Ely. R/W Hill St.

Ely. R/W Hill St.

Ely. R/W Hill St.

Ely. R/W Hill St.

Ely. R/W Hill St.

Ely. R/W Hill St.

