

MAP OF  
**NORTH LINE OF RANCHO  
 TOPANGA MALIBU SEQUIT**  
 FROM  
**STATION No 6 TO STATION No 11**

COUNTY SURVEYORS MAP No B-1236  
 SHEET No 1 OF 2 SHEETS  
 SCALE: LONGITUDINAL - 1 INCH = 400 FEET  
 OFFSETS - 1 INCH = 40 FEET

JOB NUMBER 4999  
 ALFRED JONES - COUNTY SURVEYOR  
 SURVEYED OCT. 1929 TO MAY 1930  
 BEARINGS ARE BASED ON TRUE BEARINGS  
 BY TIE TO U.S.C. & G.S. TRIANGULATION  
 SYSTEM AT TRIANGULATION STATION  
 "KINCAID" PER F.B. 524-20  
 F.B. 384-57 TO 75 & 135 TO 146  
 FIELD WORK BY... C. E. BRUNTY  
 OFFICE WORK BY... K. R. M<sup>o</sup> PHERSON  
 CHECKED BY... C. W. COX  
 CHECKED BY... K. R. M<sup>o</sup> PHERSON  
 ADDED CALCULATIONS - JANUARY 1933 R. L. BREWER  
 REVISION - JULY 1933 BY JOHN D. COLEMAN & T.M.I.

INDEX-18-

INDEX 92  
 " 95

SEQUIT

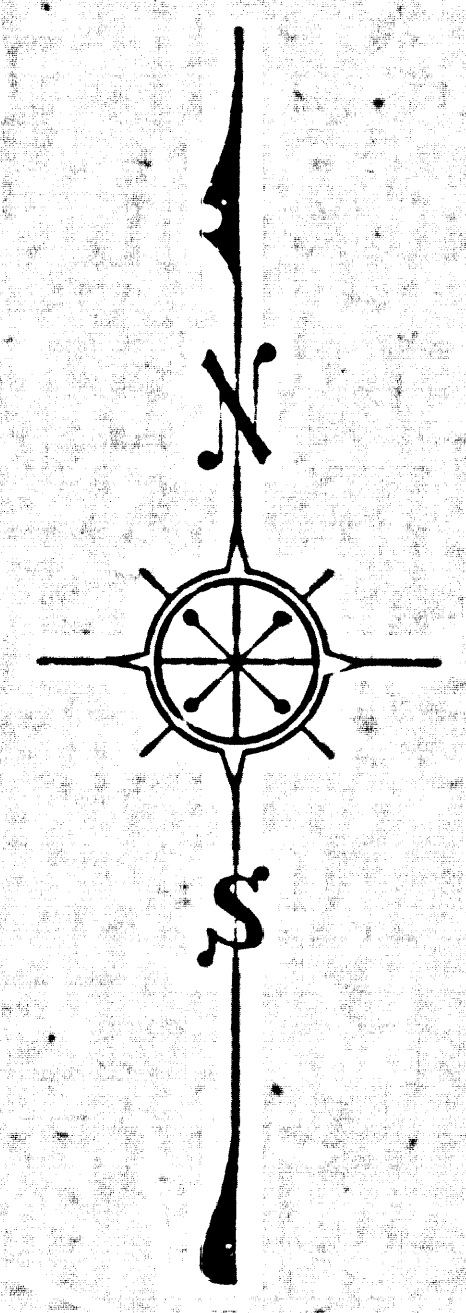
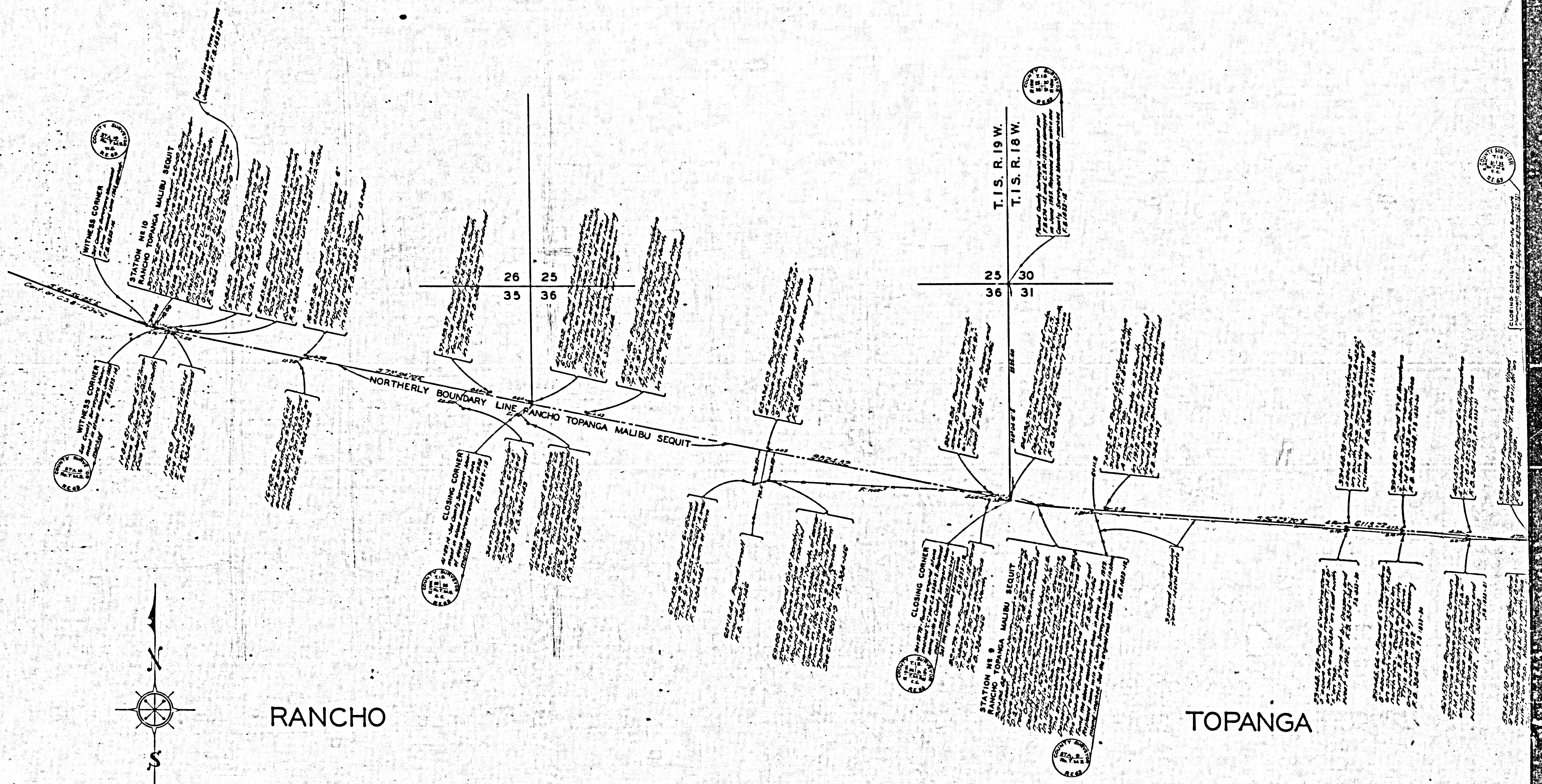
FOR BLUE PRINTING  
 WIDTH OF MAP = 30 INCHES  
 LENGTH OF MAP = 10 FEET  
 AREA/FOOT LENGTH = 2.5"  
 TOTAL AREA OF MAP = 25"

CSB-1236-1  
 A1 OF A3









RANCHO

TOPANGA

CSB-1236-1  
A3 OF A3

16

17

9

8

7