

MAP OF  
**NORTH LINE OF RANCHO  
 TOPANGA MALIBU SEQUIT**  
 FROM  
**STATION Nº 6 TO STATION Nº 11**

COUNTY SURVEYORS MAP Nº B-1236  
 SHEET Nº 2 OF 2 SHEETS  
 SCALE: LONGITUDINAL - 1 INCH = 400 FEET  
 OFFSETS - 1 INCH = 40 FEET

JOB NUMBER 4999  
 ALFRED JONES - COUNTY SURVEYOR  
 SURVEYED OCT. 1929 TO MAY 1930  
 BEARINGS ARE BASED ON TRUE BEARINGS  
 BY TIE TO U.S.C. & G.S. TRIANGULATION  
 SYSTEM AT TRIANGULATION STATION  
 "KINCAID" PER F.B. 824-20  
 F.B. 384-57 TO 75 & 195 TO 168  
 FIELD WORK BY... C.E. BRUNTY  
 OFFICE WORK BY... K.R. M<sup>o</sup> PHERSON  
 CHECKED BY... K.R. M<sup>o</sup> PHERSON  
 ADDITIONAL C.E. VERIFICATION - AUGUST 1930 - ALFRED

INDEX 54  
 " 35

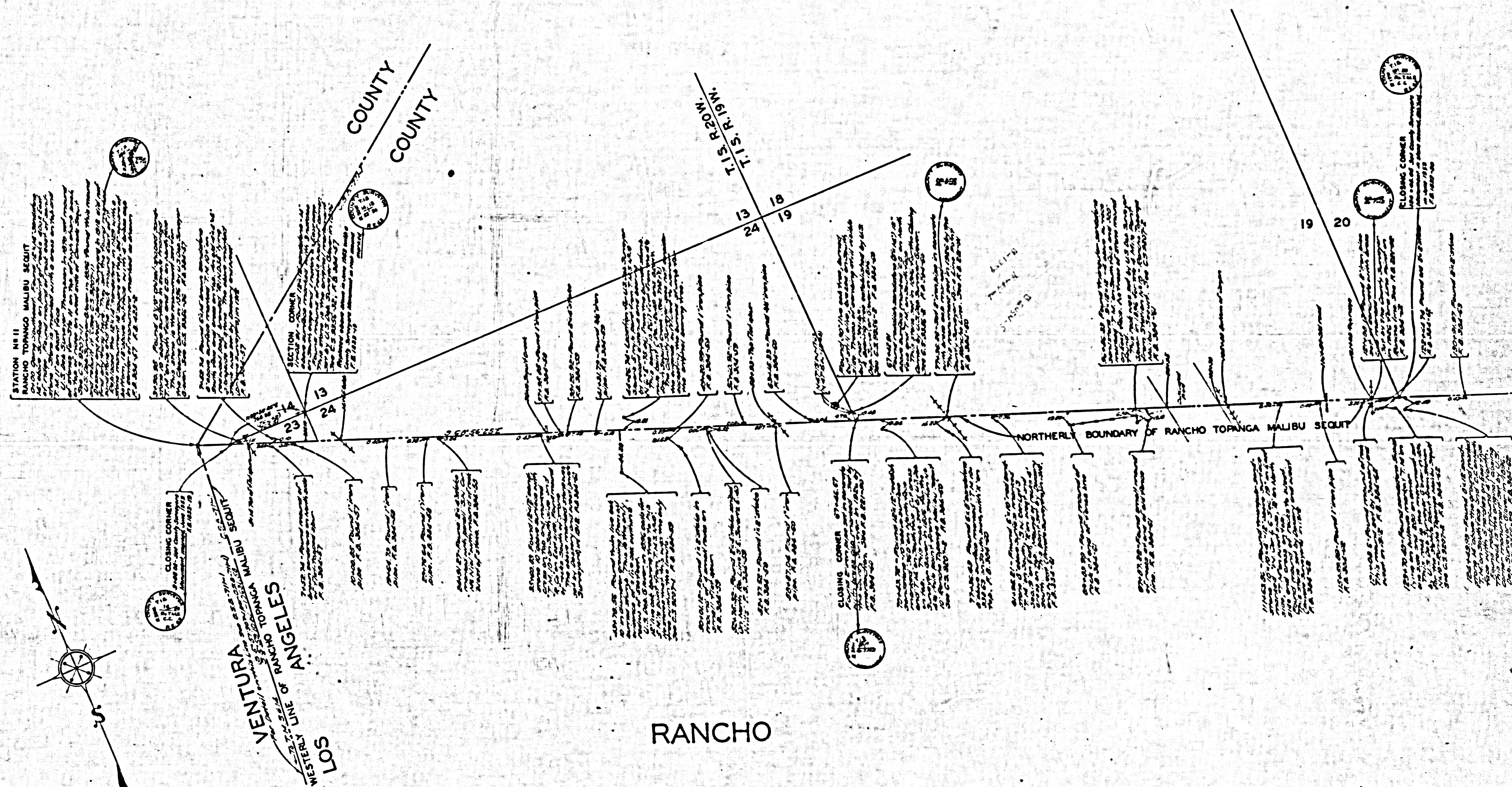
FOR BLUE PRINTING  
 WIDTH OF MAP = 30 INCHES  
 LENGTH OF MAP = 10.5 FEET  
 AREA/FOOT LENGTH = 2.5"  
 TOTAL AREA OF MAP = 26.25"

CSB-1236-2  
 A1 OF A3

CSB-1236-2 SHEET 2 OF 2 SHEETS  
 SHEET Nº 2 OF 2 SHEETS

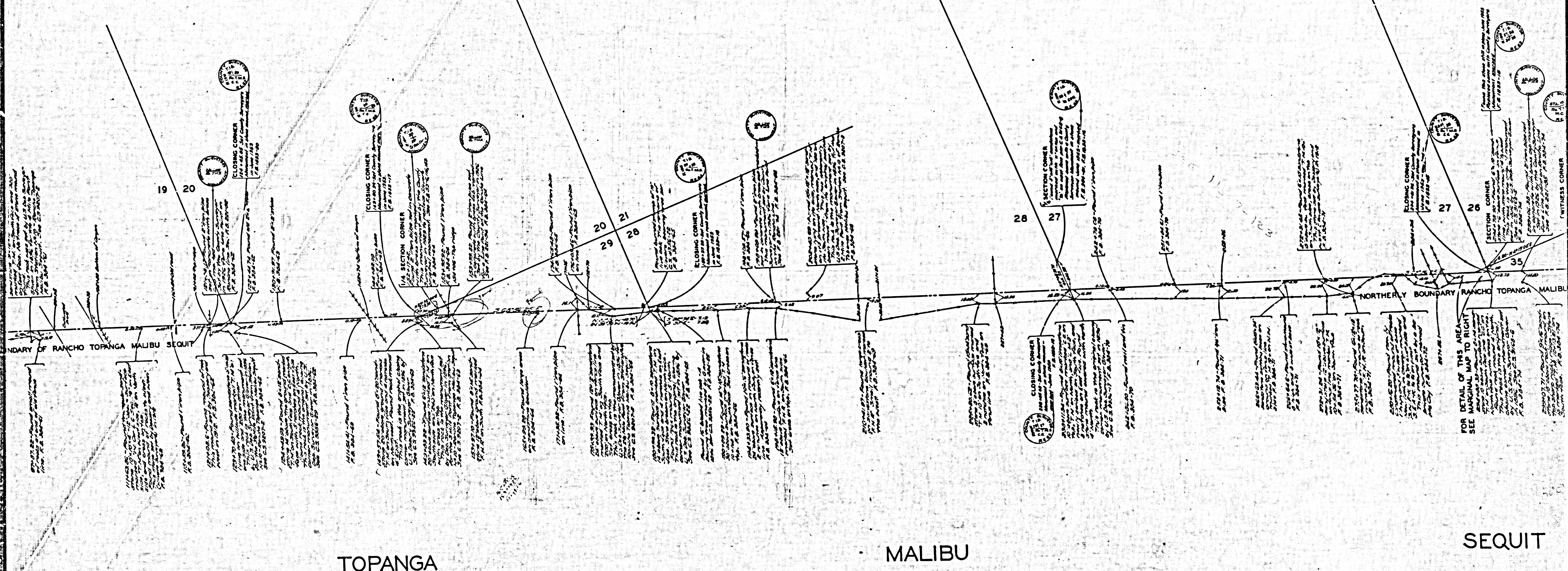
CSB-1236-2 SHEET 2 OF 2 SHEETS  
 SHEET Nº 2 OF 2 SHEETS





CSB-1236-2  
A3 OF A3





P. 1-414-416  
R.F. 534

CSB-1236-2  
A2 OF A3