

MARGINAL MAP  
SCALE 1 IN. = 800 FT.

MAP OF  
**PARKER MOUNTAIN  
LOOKOUT STATION LOT**  
OF  
DEPT. OF FORESTER AND FIRE WARDEN  
LOCATED IN  
WEST 1/2 OF SEC. 2, T. 4 N., R. 13 W., S.B.M.  
COUNTY SURVEYORS MAP NO B-1241  
SCALE - 1 INCH = 10 FT.

JOB NO 8050  
ALFRED JONES - COUNTY SURVEYOR  
SURVEYED - MAY & SEPT. 1934 & OCT. 1936  
BEARINGS ARE BASED ON TRUE BEARINGS PER TIE TO  
U.S.G.S. TRIANGULATION SYSTEM - PER F. B. 545-34  
F. B. 545-31-36 & 275-288  
FIELD WORK BY T. J. STEVENSON  
P. T. DUNLAP  
H. S. JOHNSON  
OFFICE WORK BY M. H. CURTIS  
A. E. TIMMONS  
CHECKED BY K. R. MYPHERSON  
J. H. SMITH

DATUM  
Elevations shown hereon were indirectly established  
by vertical angle control from U.S.C. & G.S.  
B.M.-H53 (U.S. 1406) Per F.B. 545-287-288.

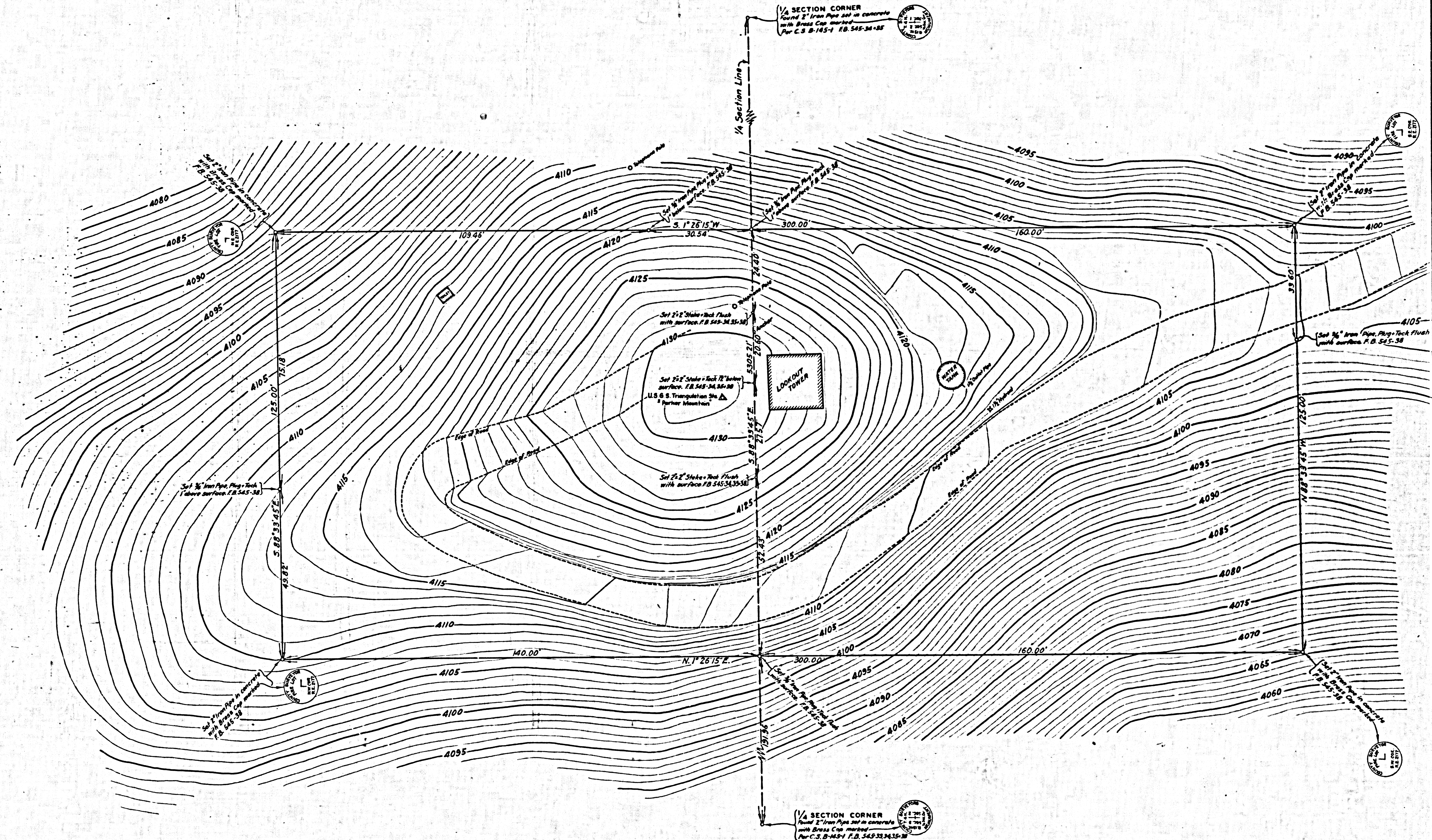
CSB-1241  
A1 OF A2

FOR BLUE PRINTING	
WIDTH OF MAP	38 INCHES
LENGTH OF MAP	73 FEET
AREA FOOT LENGTH	3 8'
TOTAL AREA OF MAP	225 7'

COUNTY SURVEYORS MAP NO B-1241

1:25,000 1:50,000 1:100,000 1:200,000 1:400,000 1:800,000 1:1,600,000

COMPLIANCE REPORTS MAP, 1:25,000



CSB-1241  
A2 OF A2