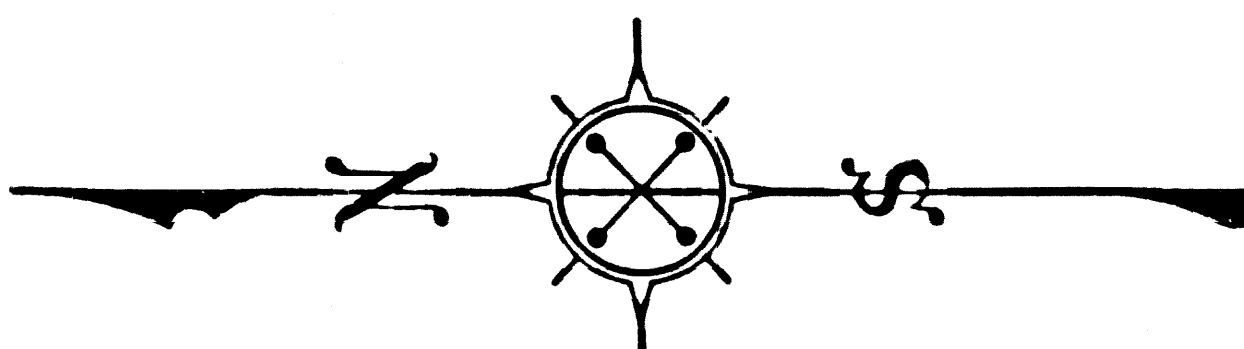
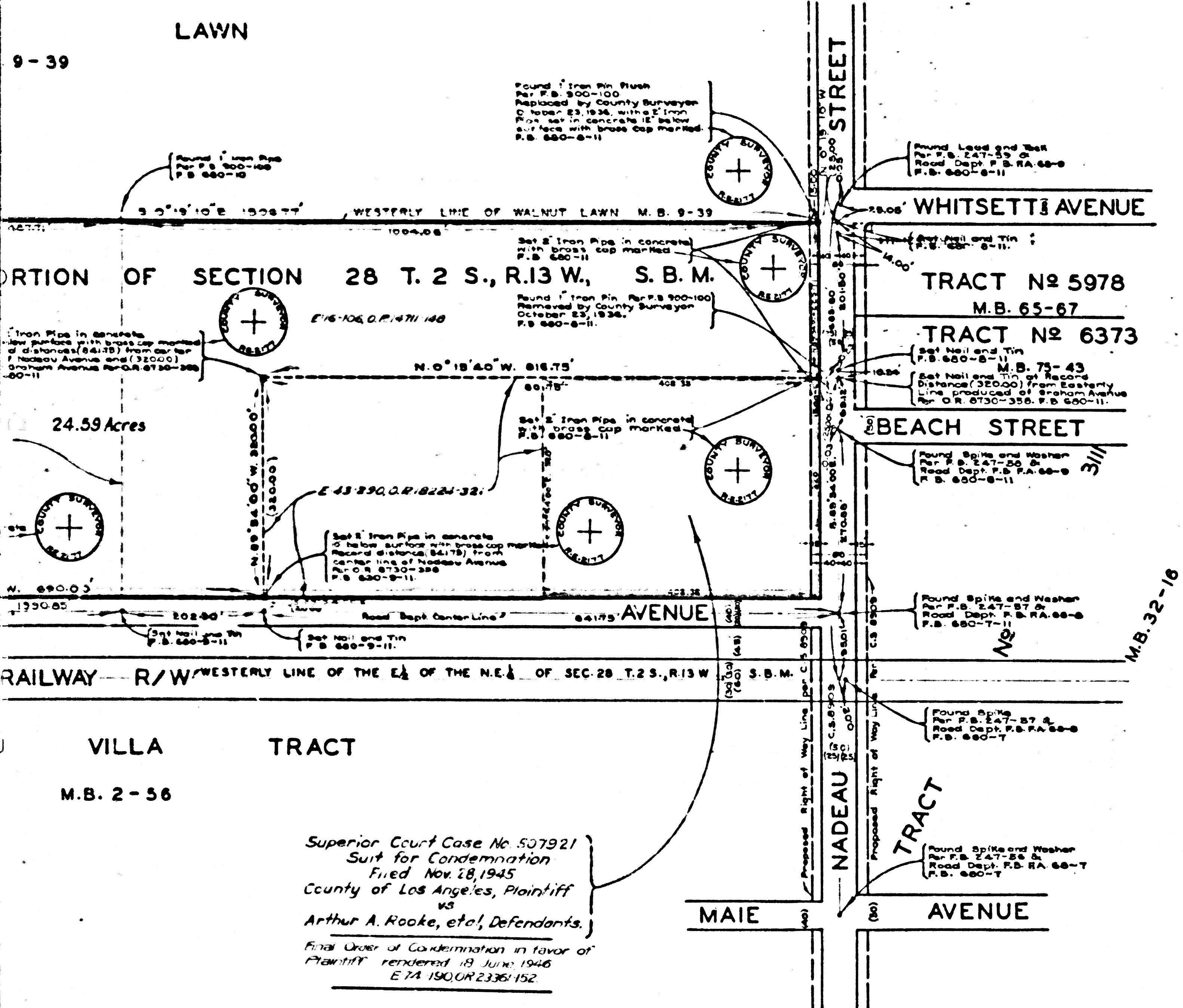


Court Case No. 45323
 Suit for Condemnation
 Filed Jan 19, 1943
 of Los Angeles - P1771
 vs
 Frabach, et al - Def.
 Judgment in favor of
 Plaintiff rendered March 4, 1947
 9-115, OR 24 397-71



MAP OF
 FRANKLIN DELANO ROOSEVELT
 PLAYGROUND PARK
 BEING A PORTION OF SECTION 28 T. 2 S., R. 13 W., S. B. M.

COUNTY SURVEYORS MAP No B-1246
 SCALE: 1 INCH = 100 FT.

INDEX 7

JOB NUMBER 4318
 ALFRED JONES - COUNTY SURVEYOR
 SURVEYED - OCTOBER 1939 AND JANUARY 1940.
 SURVEYED UNDER INSTRUCTIONS OF THE
 BOARD OF SUPERVISORS PER ORDER DATED
 OCTOBER 7, 1936
 BEARINGS ARE BASED ON THE BEARING OF
 NADEAU STREET PER C.S. 8909
 F.B. 680-5-1
 FIELD WORK BY.....L.D. MOORE
 OFFICE WORK BY.....C.J. TERRY
 CHECKED BY.....A.A. ROESSER
 L.K. FREEMAN

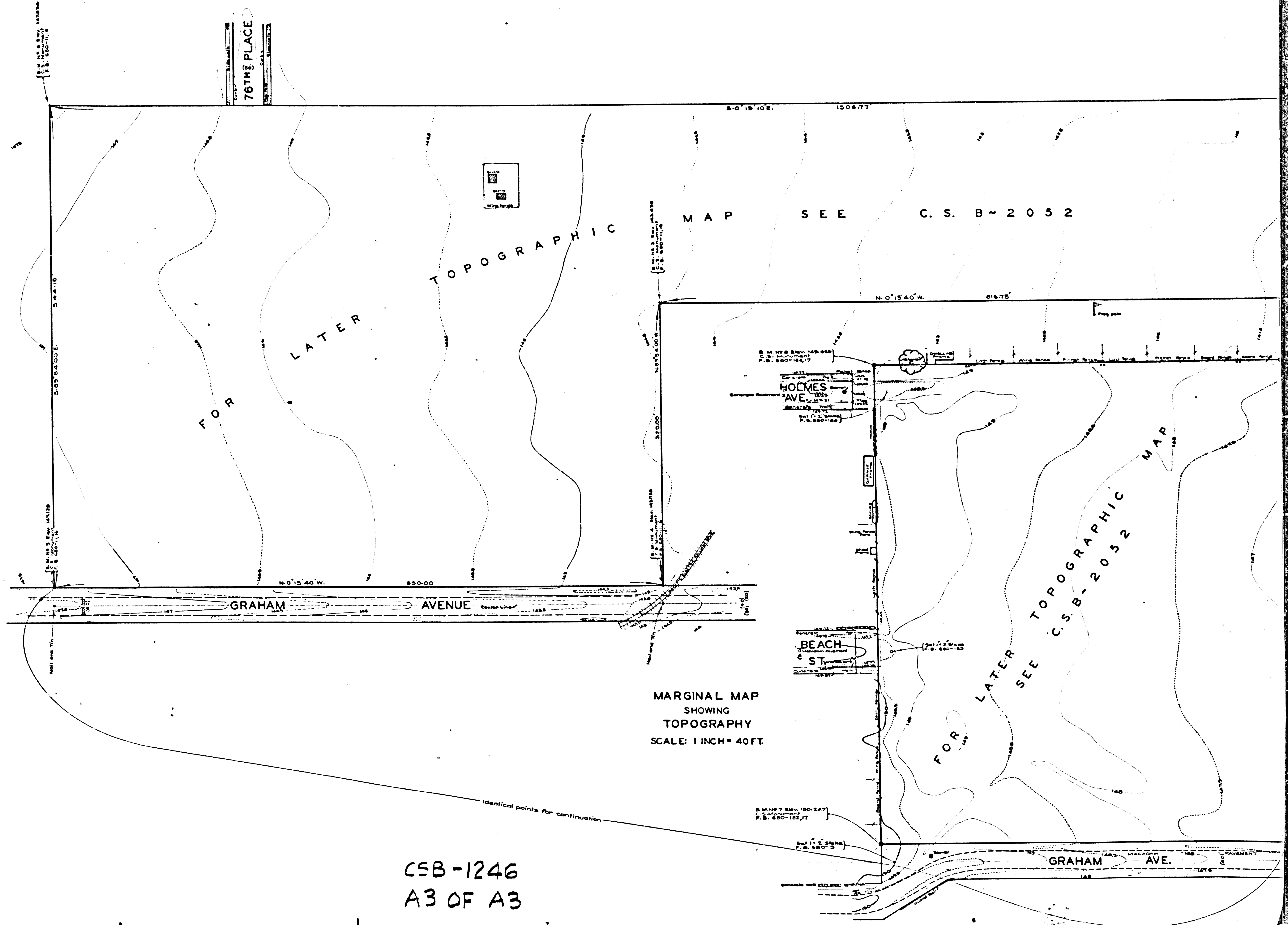
ELEVATIONS SHOWN HEREON ARE BASED ON THE
 1934 ADJUSTMENT OF U.S.C. & G.S. B.M. Y-32 (U.S.)
 FOR TOPOGRAPHIC MAP SEE C.S. B-2052

Revised March 1946 - R.V.M.M.A.
 Acreage added Oct. 27, 1953 C.E.D.
 Name changed by Board Order dated Mar 3, 1954, C.E.D. 3-158-207
 (Min. Bk. 4037 page 67)

CSB-1246
 A1 OF A3

COPYRIGHT SURVEYORS MAP NO P-15190

COPYRIGHT SURVEYORS MAP NO P-15190



CSB-1246
A3 OF A3