

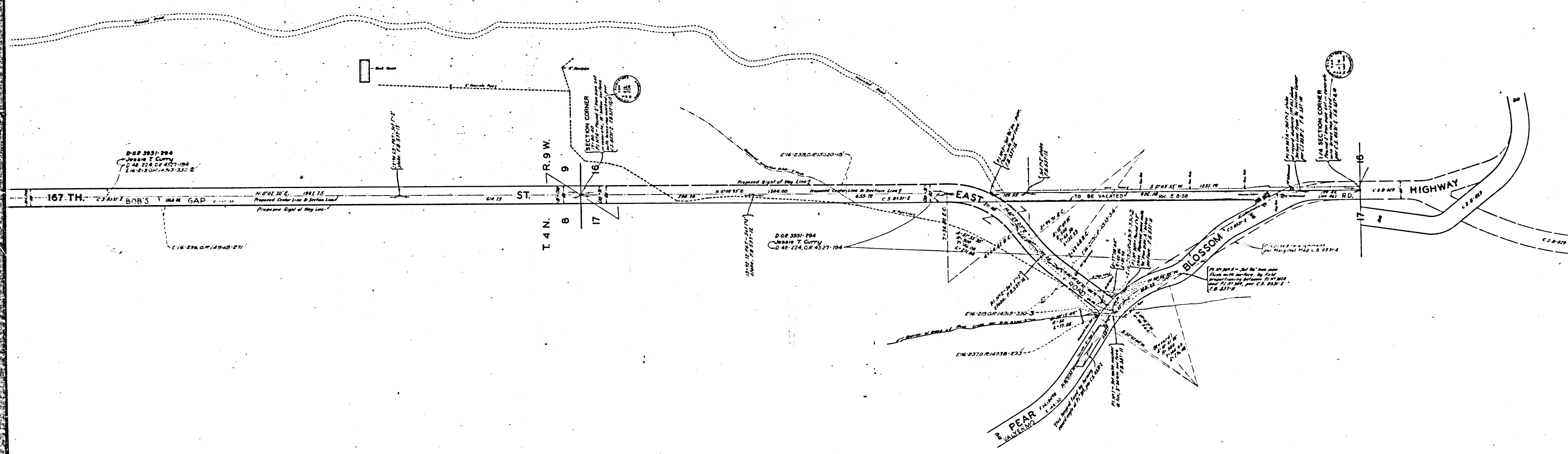
MAP OF
167 TH. STREET EAST
 FROM
PEAR BLOSSOM HIGHWAY
 TO
N.W. 1/4 SECTION 9, T.4 N. - R.9 W. S.B.M.
 COUNTY SURVEYORS MAP N^o B-1249
 SCALE - 1 INCH = 100 FT.

JOB NUMBER 5058.
 ALFRED JONES - COUNTY SURVEYOR
 SURVEYED - OCTOBER 1936.
 BEARINGS ARE BASED ON THE BEARING OF
 PEAR BLOSSOM HIGHWAY PER C.S. 8531-2.
 F.B. 537 - 7 - 22.
 FIELD WORK BY... E.A. ROSECRANS.
 OFFICE WORK BY... F.A. WOOD.
 CHECKED BY... K.R. McPHERSON.

INDEX 45-82

FOR BLUE PRINTING
 WIDTH OF MAP = 30 INCHES
 LENGTH OF MAP = 8.5 FEET
 AREA/FOOT LENGTH = 29
 TOTAL AREA OF MAP = 22

CSB-1249
 A1 OF A3



D.O.P. 3931-294
 Jessie T. Curry
 D. 48-224, O.R. 4527-194
 E. 4-219, O.M. 1453-330-2

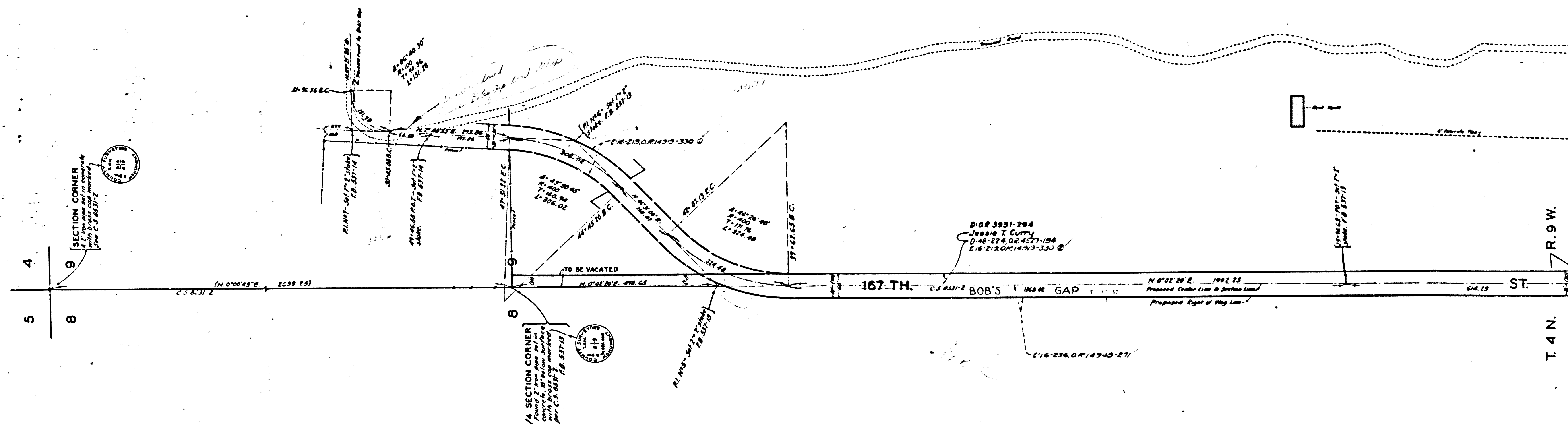
T. 4 N.
 R. 9 W.

SECTION CORNER
 17-16-9
 17-16-9
 17-16-9
 17-16-9

D.O.P. 3931-294
 Jessie T. Curry
 D. 48-224, O.R. 4527-194

SECTION CORNER
 17-16-9
 17-16-9
 17-16-9
 17-16-9

CSB-1249
 A2 OF A3



CSB-1249
 A3 OF A3