

LOS ANGELES
 ADMINISTRATIVE CENTER
 MAP SHOWING
 EXISTING AND PROPOSED STREETS
 AND
 EXTENT OF PUBLIC OWNERSHIP

ALFRED JONES COUNTY SURVEYOR
 SCALE: 1" = 50 FT.
 COMPILED BY W. J. HANCE
 CHECKED BY R. F. FLICKWIR
 JUNE 1936

LEGEND

FEDERAL PROPERTY	[Symbol]
STATE	[Symbol]
COUNTY	[Symbol]
CITY	[Symbol]
SCHOOL	[Symbol]
TRACTS OUTLINE AGGREGATE PARCELS INCLUDED IN A PARTICULAR COURT CASE.	[Symbol]

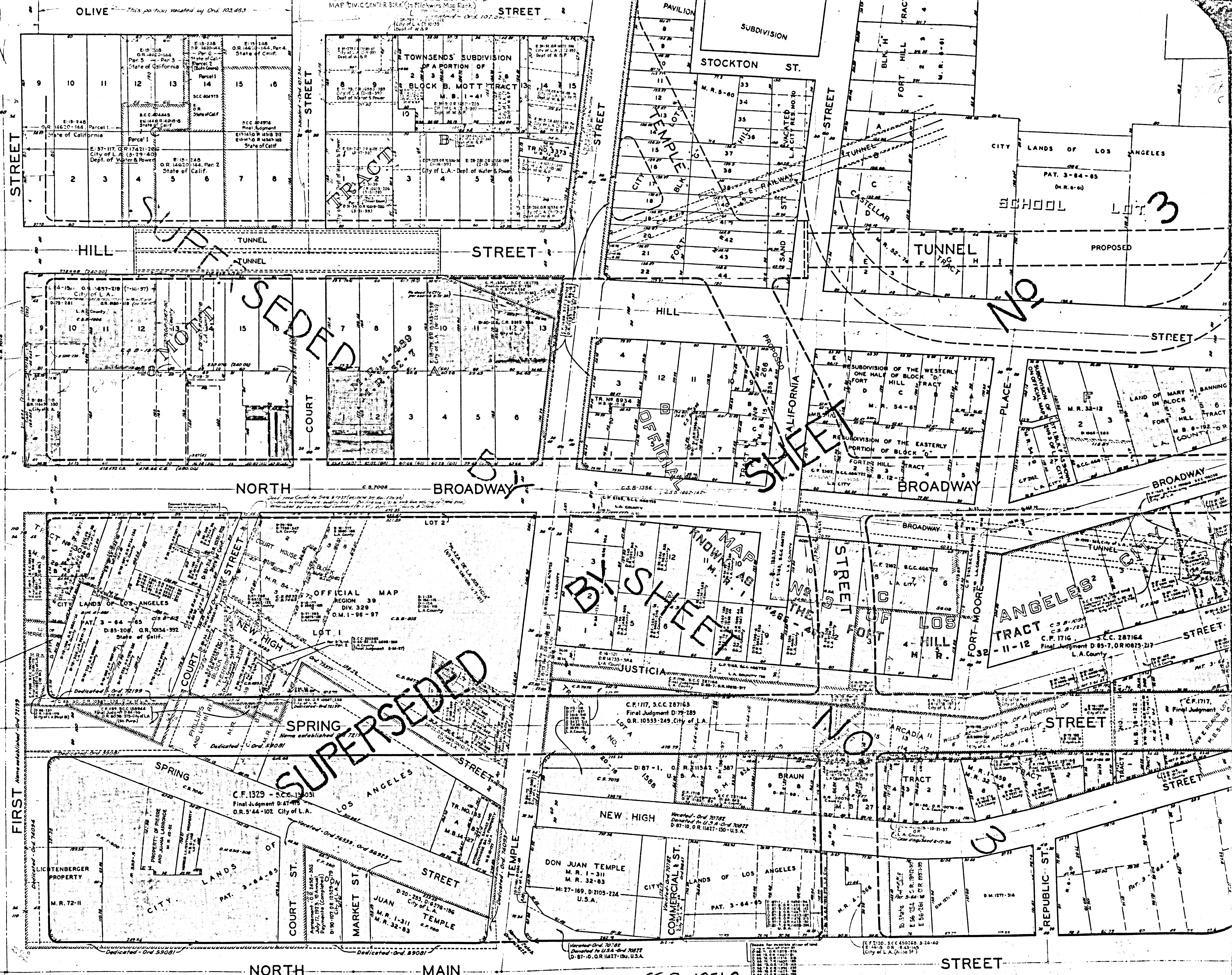
C.S. Index 2

Note: Details in regard to the location of the streets shown on this map are recommended by the County Surveyor and are subject to change without notice.

NOTE: This print is made from County Surveyors Map No. B-1251, Sheet No. 1.

SEE H-59-1 to 7
 C.S. 8835 Sheets 2483
 This map supersedes C.S. 8835 Sheets 16, 2.

CSB-1251-2
 A1 OF A2



Handwritten notes in the top left corner, including a reference to 'This portion vacated by Ord. 103,453'.

Handwritten notes in the middle left corner, detailing various legal proceedings and dates.

Handwritten notes in the lower middle left corner, mentioning 'Dedicated by Ord. 72,199'.

SUPERSEDED

NO

NO

CSB-1251-2
A2 OF A2

FOR OTHER PROPERTY SEE L.A. CITY MAP DIVISION CENTER BUREAU (City of Los Angeles)