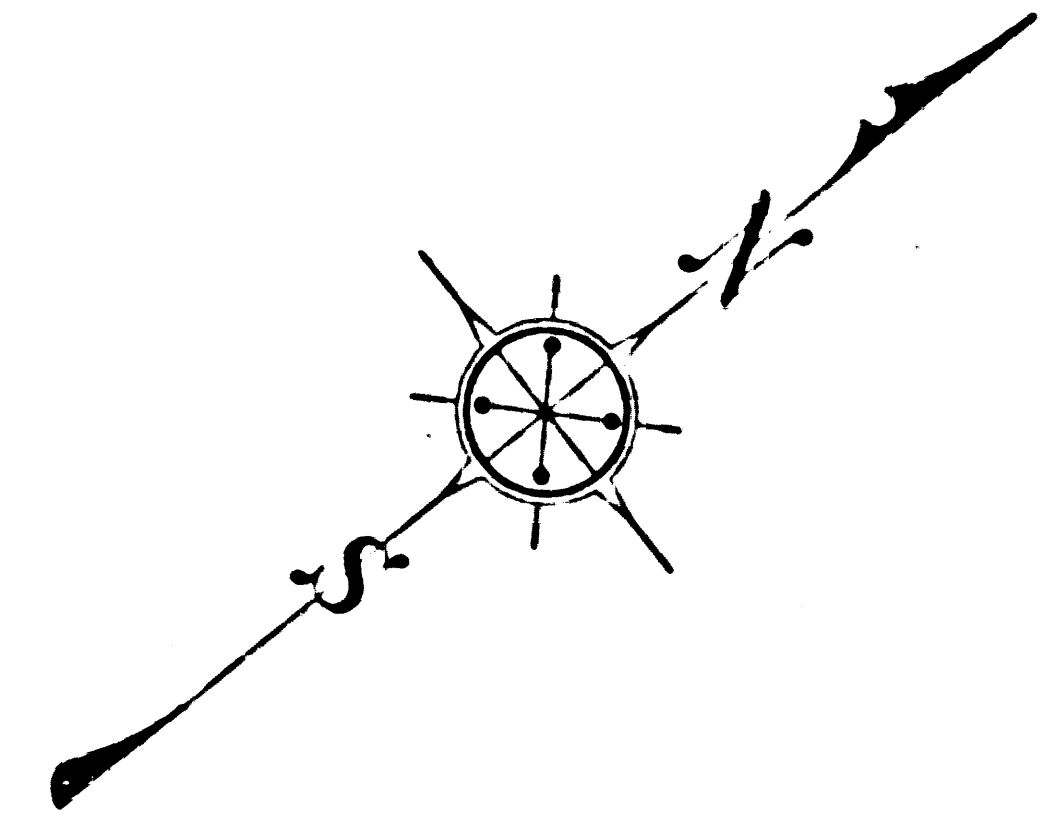




CSB-1251-3
A1 OF A3



LOS ANGELES
CIVIC CENTER AREA
ADMINISTRATIVE CENTER
MAP SHOWING
EXISTING AND PROPOSED STREETS
AND
EXTENT OF PUBLIC OWNERSHIP

ALFRED JONES COUNTY SURVEYOR
SCALE: 1" = 50 FT.
COMPILED BY W. J. HANCE
CHECKED BY R. F. FLICAWIR
JUNE 1936

CSB-1251-3

LEGEND

FEDERAL PROPERTY	[Symbol]	CITY POWER
STATE	[Symbol]	DEPT. OF WATER & POWER
COUNTY	[Symbol]	TRUSTEES OF THE PUBLIC LIBRARY
CITY	[Symbol]	TRUSTEES OF THE PUBLIC LIBRARY
SCHOOL	[Symbol]	TRUSTEES OF THE PUBLIC LIBRARY
HACHURES OUTLINE AGGREGATE PARCELS INCLUDED IN A PARTICULAR COURT CASE.	[Symbol]	TRUSTEES OF THE PUBLIC LIBRARY

PROPOSED STREET PLAN REVISED 8-13-42 IN ACCORDANCE WITH LATEST AVAILABLE INFORMATION FROM CITY ENGINEER'S OFFICE--SEE C.S. B-1251-4
C.S. Index 7
SEE H-39-1 to 7
C.S. 8835 Sheets 3445
This map supersedes C.S. 8835 Sheets 16, 2.

SHEET NO. 3 OF 3 MAP NO. 1251-3

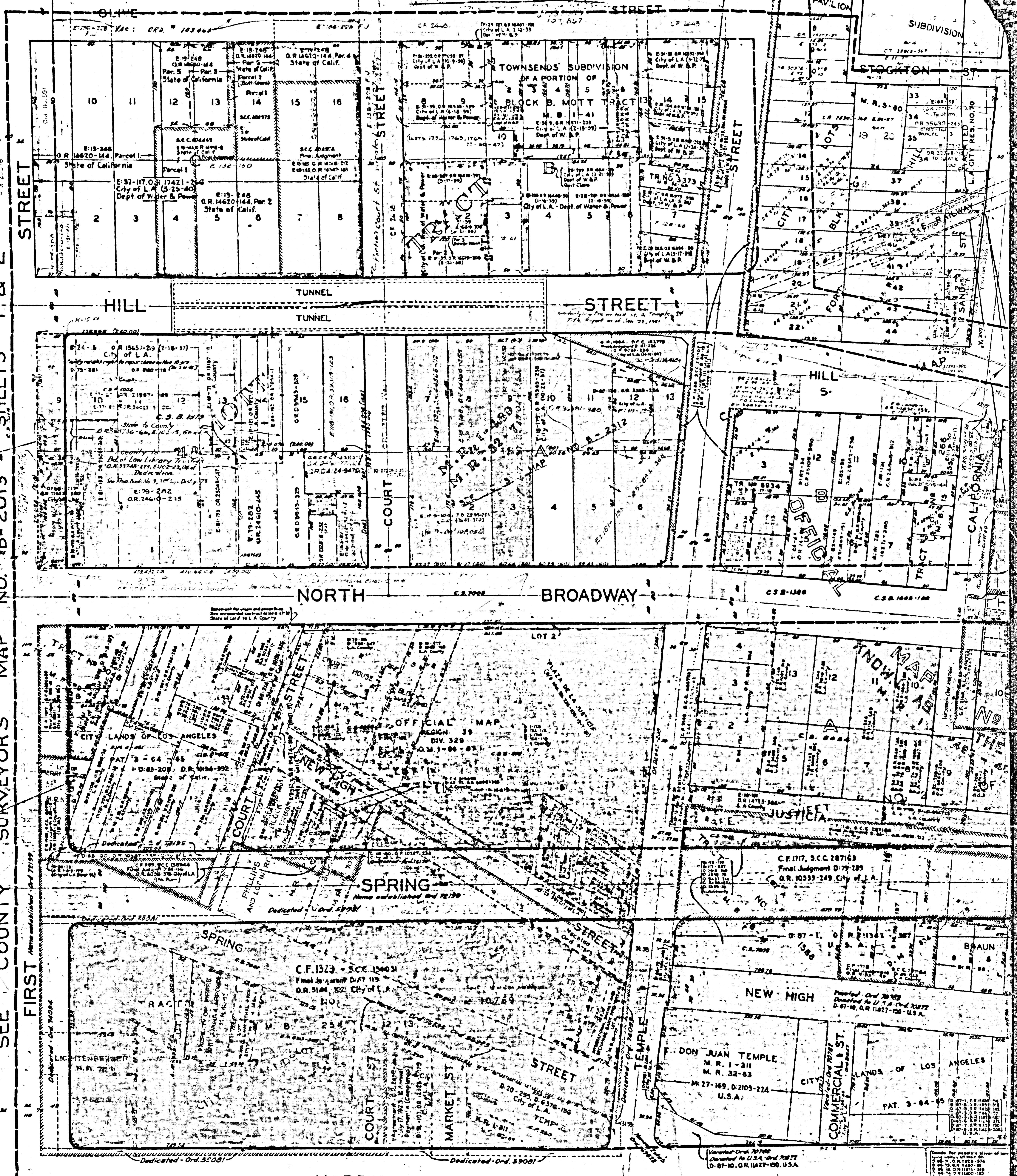


SEE COUNTY SURVEYOR'S MAP NO. B-2013-SHEET NO. 2

CSB-1251-3
A2 OF A3

FOR OTHER PROPERTY SEE EIGHTH MAP CIVIC CENTER BDRY. (S.B. 2013)-2

ALAM



SEE COUNTY SURVEYOR'S MAP NO. B-2013 - SHEETS 1 & 2

FIRST

CSB-1251-3

A3 OF A3

SEE COUNTY SURVEYOR'S MAP