

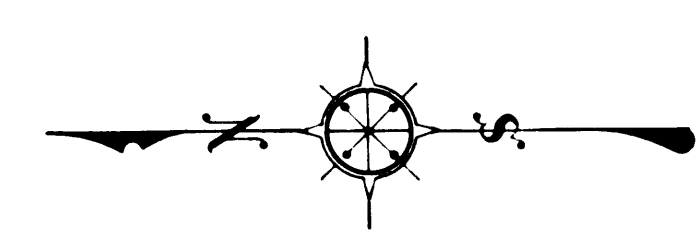
TRACT NO 5681
M.B. 136-23-24

4220

MARTEL AVE.

TRACT NO 4647
M.B. 46-47

VISTA ST.



MAP OF
PLUMMER PARK
IN BLOCK BOUNDED BY SANTA MONICA BOULEVARD
VISTA STREET, FULLER AVENUE AND FOUNTAIN AVENUE

COUNTY SURVEYORS MAP NO B-1311
SCALE: 1 INCH = 30 FT.

JOB NUMBER 4322

ALFRED JONES-COUNTY SURVEYOR
SURVEYED JANUARY - APRIL 1937

SURVEYED UNDER INSTRUCTIONS OF THE
BOARD OF SUPERVISORS PER ORDER DATED
JANUARY 12, 1937

BEARINGS ARE BASED ON THE BEARING
OF SANTA MONICA BLVD-PER TRACT NO 5576
M.B. 60-22

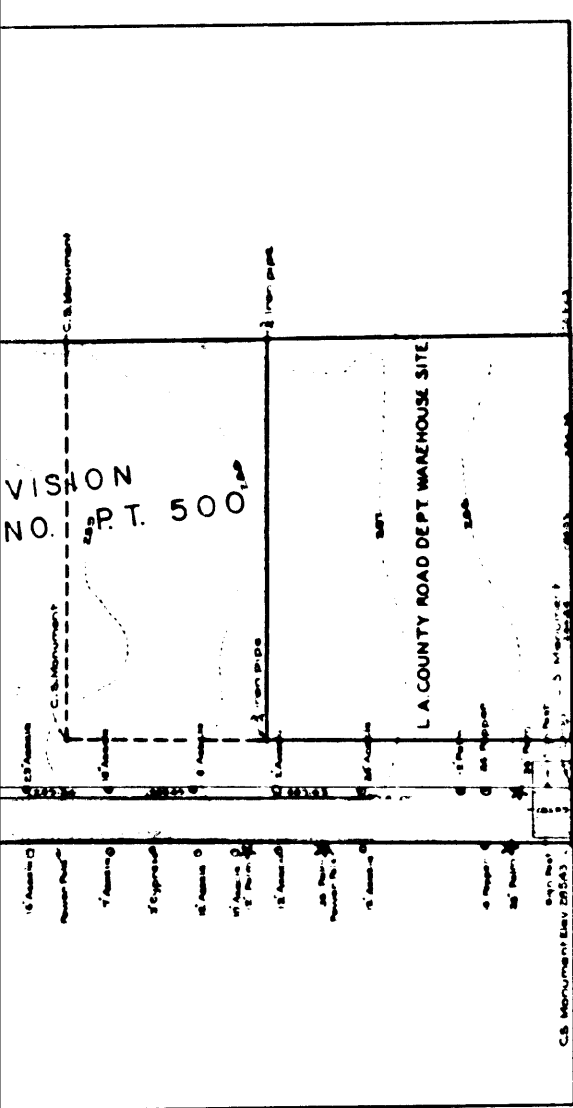
F.B. 493-11-124

FIELD WORK BY L.D. MOORE
OFFICE WORK BY K.R. M'PHERSON
C.J. TERRY
CHECKED BY K.R. M'PHERSON
J.A. LYON

Revised Sept. 1941 See F.B. 780-49 1053
Revised Nov. 1941 See F.B. 780-49 1053
Revised May 1942 See F.B. 780-49 1053
Revised May 1942 See F.B. 780-49 1053
Revised May 1942 See F.B. 780-49 1053
Revised May 1942 See F.B. 780-49 1053

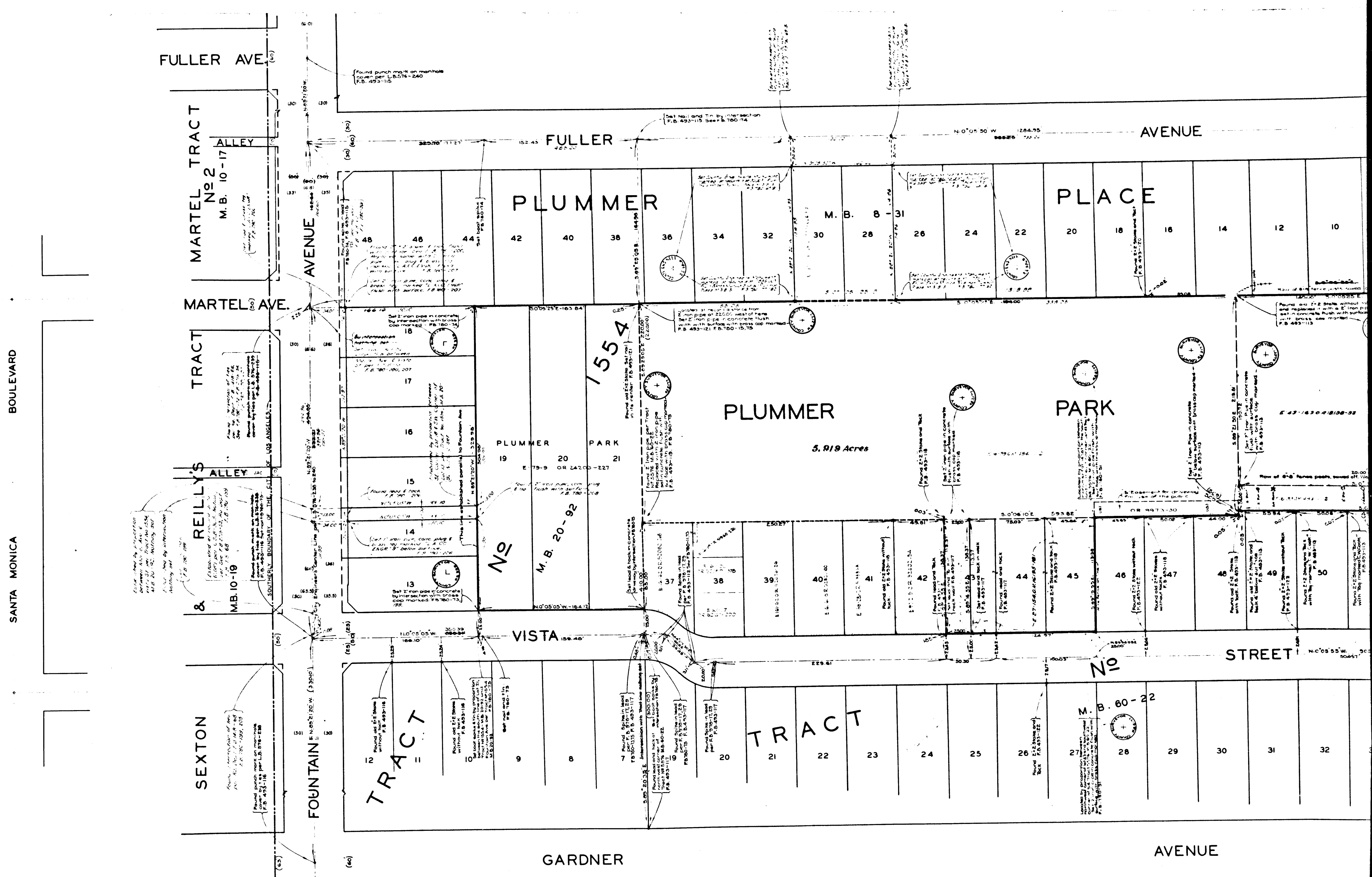
FOR TOPOGRAPHY SEE C.S.B.-1888-3 SURVEY DIVISION FILE MAP NO. PT 000
Name established by Board Order Min. Bk. 408-238 See F. 138-297

CSB-1311
A1 OF A3



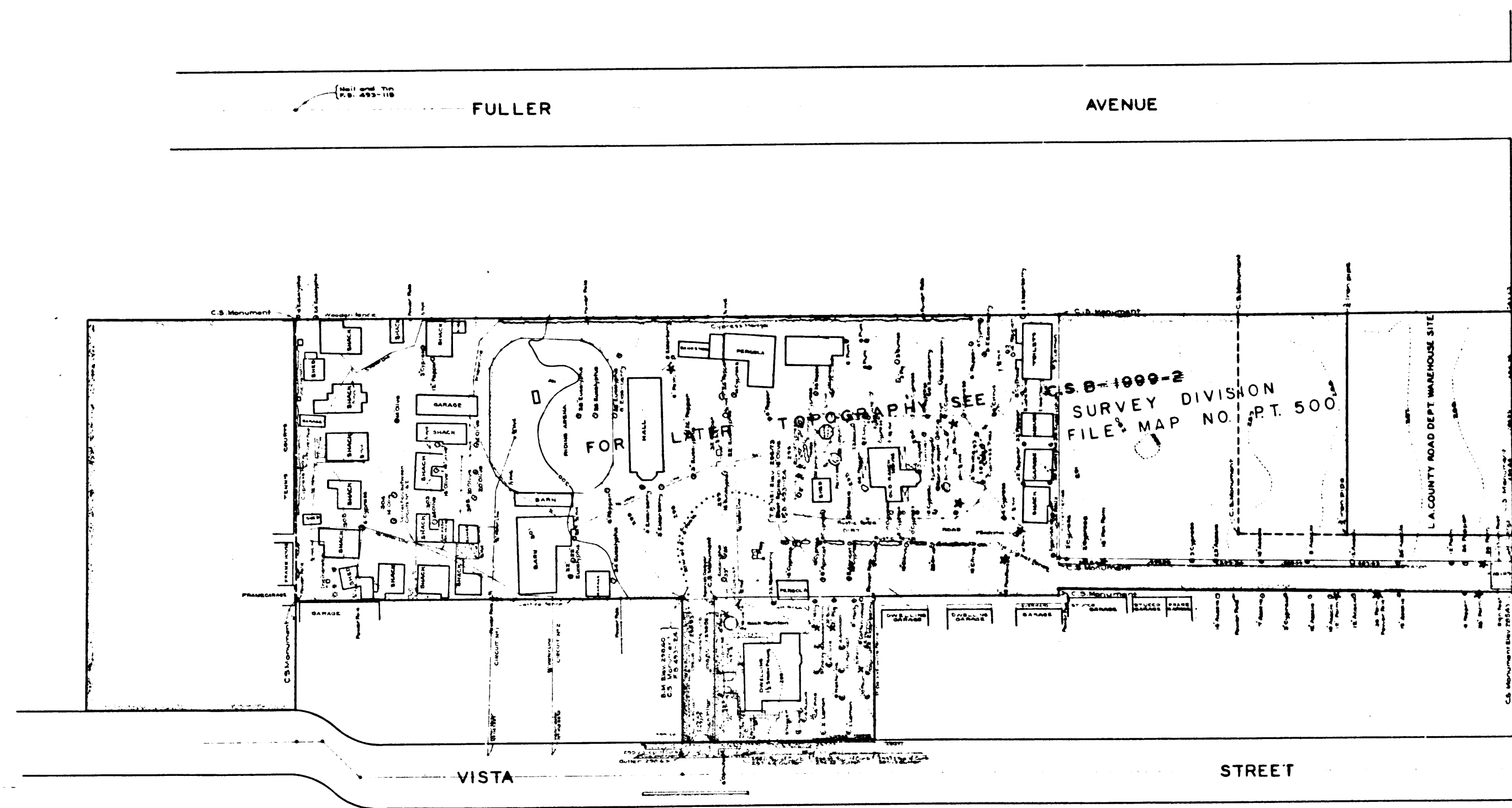
MARGINAL MAP
SHOWING
TOPOGRAPHY
SCALE: 1 INCH = 40 FT.

DATUM: U.S.G.S.
BENCH MARK ELEVATIONS SHOWN HEREON
ESTABLISHED FROM U.S.B.M. NO. 399 (15.50)
PER BULLETIN NO. 756-138 U.S.G.S. RECORDS
OF ELEVATIONS BASED UPON BULLETIN
ADJUSTMENT OF 1923.

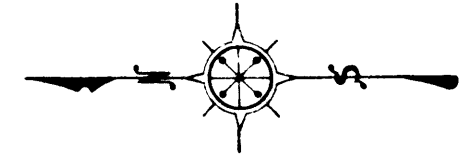


CSB-1311
A2 OF A3

111-1-B-01 SAN BERNARDINO COUNTY



CSB-1311
A3 OF A3



MARGINAL MAP
SHOWING
TOPOGRAPHY
SCALE: 1 INCH = 40 FT.

DATUM - U.S.G.S.
BENCH MARK ELEVATIONS SHOWN HEREON
ESTABLISHED FROM U.S. B.M. NO. 399 (U.S. 516)
PER BULLETIN NO. 789-138 U.S.G.S. RECORDS
OF ELEVATIONS BASED UPON BULLETIN
ADJUSTMENT OF 1923.
Partially revised and adjusted. Date, herein, Aug. 1944.

Established by projection
from the U.S. G.S. map
M.B. 20-52, National Ser.
Established by intersection
Nothing set.

FUL