

MAP OF
PECK ROAD
 FROM
 SIPHON ROAD
 TO
 DUARTE ROAD.
 COUNTY SURVEYORS MAP NO B-1351
 SHEET NO 4 OF 5 SHEETS
 SCALE - 1 INCH = 100 FT

JOB NUMBER 7052
 ALFRED JONES - COUNTY SURVEYOR.
 SURVEYED - JUNE 1937 - NOV 1939
 SURVEYED UNDER INSTRUCTIONS OF THE
 BOARD OF SUPERVISORS PER ORDER DATED
 JUNE 8, 1937
 BEARINGS ARE BASED ON THE BEARING OF
 POMONA BOULEVARD PER C.S. B-1216
 F.B. 7-258 F.B. 746-1-212, F.B. 737-1-29
 FIELD WORK BY H.F. EVANS
 OFFICE WORK BY J.D. PRICE
 CHECKED BY A.A. ROESER

LOT 3, SECTION 2,
 T. 1 S. R. 11 W.
 DE DUARTE.

TRACT NO 4522.
 M.B. 48-28.

CSB-1351-4
 A10FA3

LOT 10, SECTION 35,
T. 1 N. R. 11 W.
M.R. 6-40 & 41. M.R. 6-80-82.

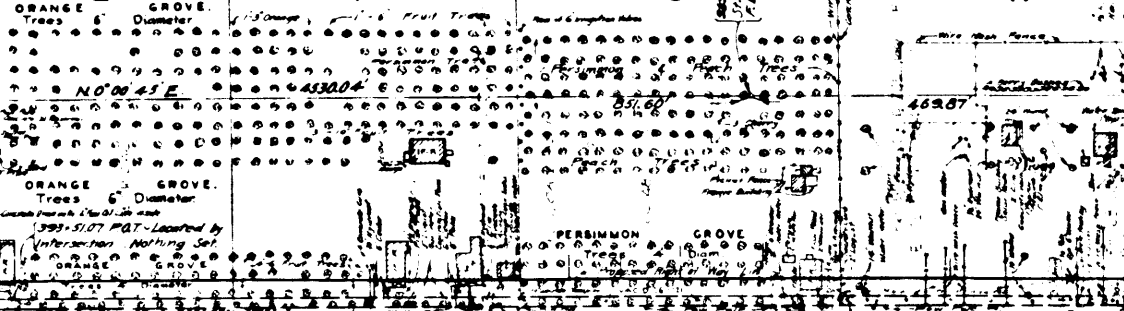
LOT 1,
SECTION 2,
T. 1 S. R. 11 W.
L.R. 133-10.

OAK AVE.

FOR TOPOGRAPHY SEE F.B. 746, PAGES 180 TO 182

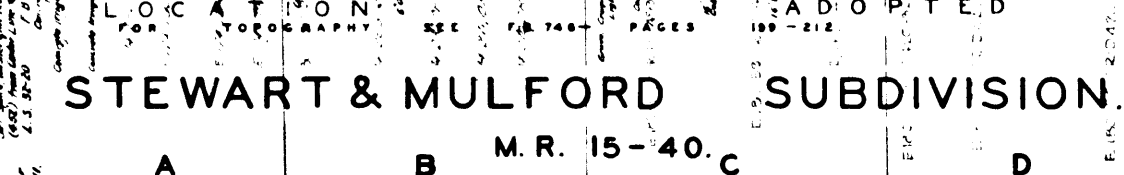
STEWART & MULFORD SUBDIVISION.

LOCATION ABANDONED BY H



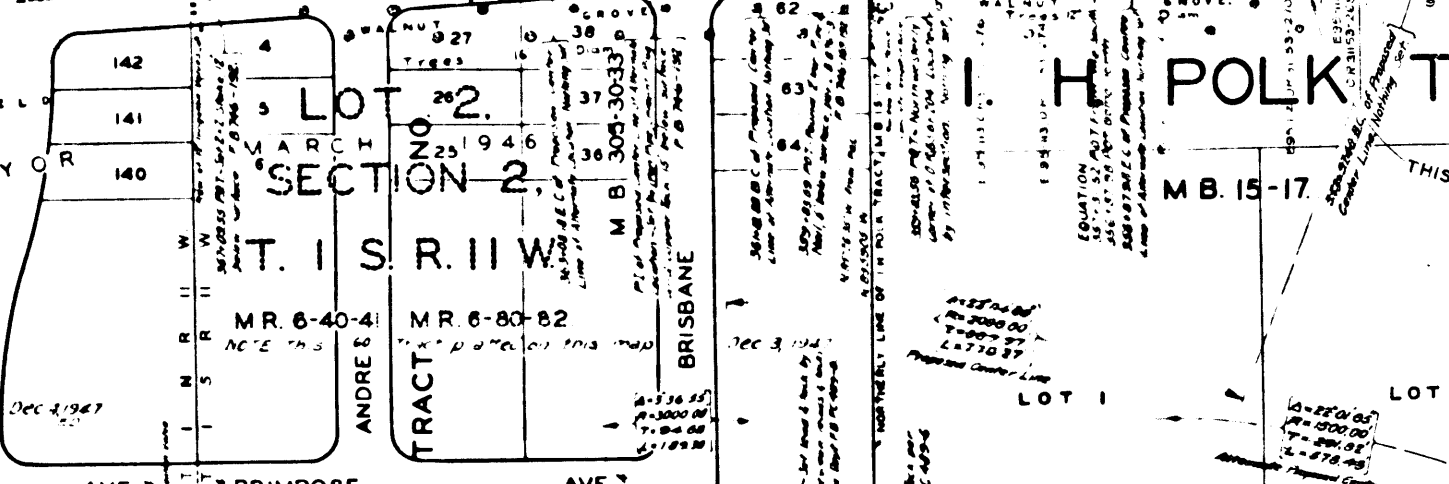
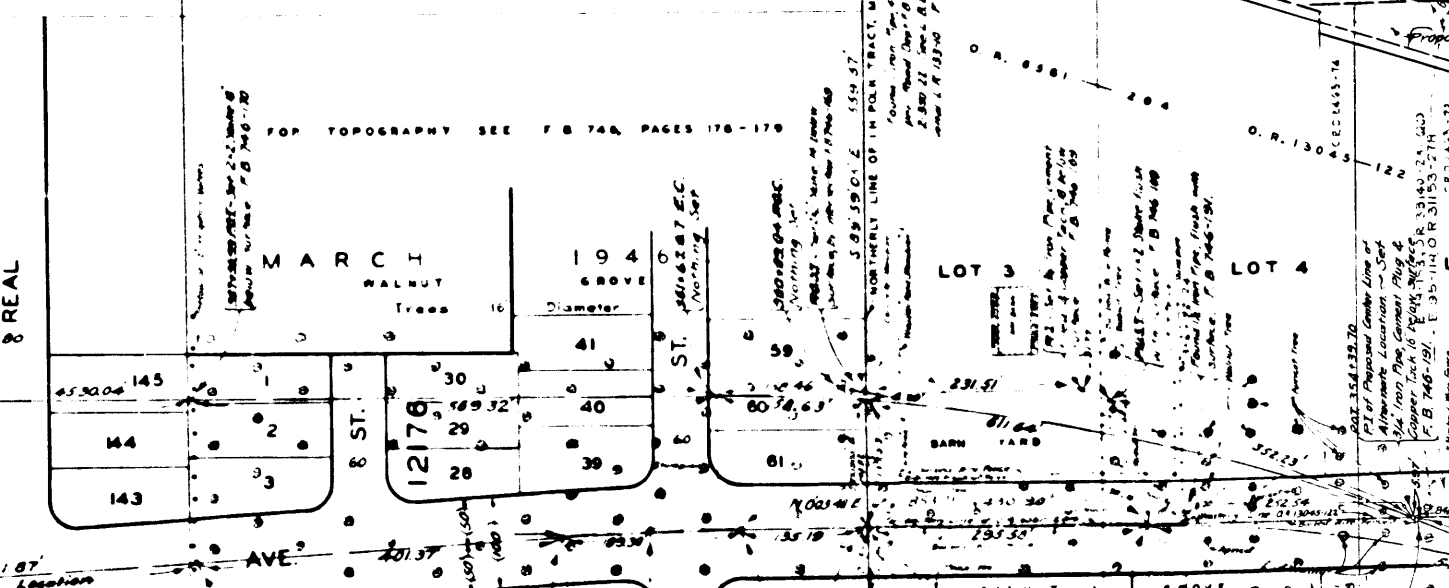
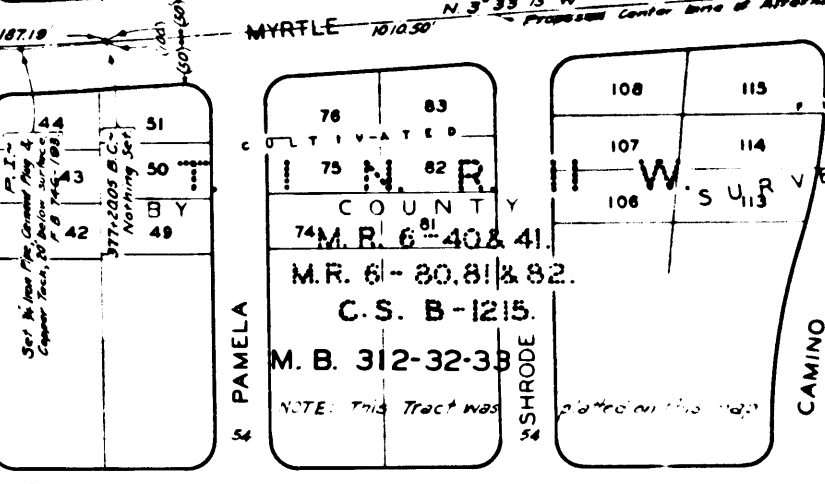
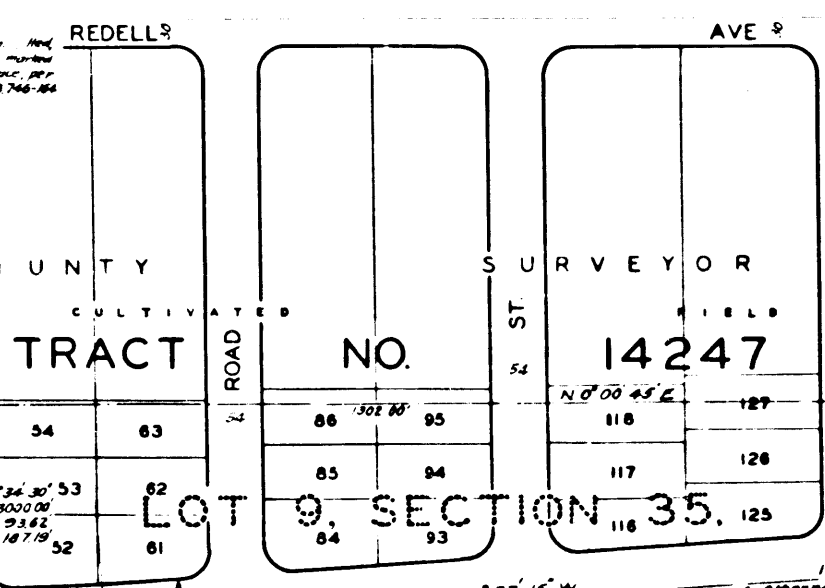
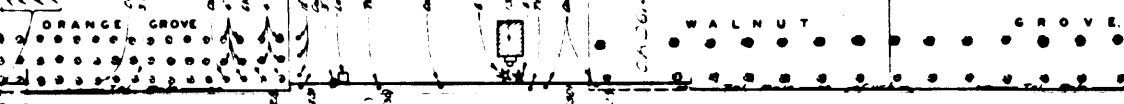
STEWART & MULFORD SUBDIVISION.

LOCATION ADOPTED



STEWART & MULFORD SUBDIVISION.

LOCATION ADOPTED



SANTA FE PL.

MYRTLE AVE.

FOR TOPOGRAPHY SEE F.B. 746, PAGES 180 TO 182

THIS LOCATION

FOR TOPOGRAPHY SEE F.B. 746, PAGES 180 TO 182

THIS LOCATION

FOR TOPOGRAPHY SEE F.B. 746, PAGES 180 TO 182

THIS LOCATION

FOR TOPOGRAPHY SEE F.B. 746, PAGES 180 TO 182

THIS LOCATION

FOR TOPOGRAPHY SEE F.B. 746, PAGES 180 TO 182

THIS LOCATION

FOR TOPOGRAPHY SEE F.B. 746, PAGES 180 TO 182

THIS LOCATION

FOR TOPOGRAPHY SEE F.B. 746, PAGES 180 TO 182

THIS LOCATION

FOR TOPOGRAPHY SEE F.B. 746, PAGES 180 TO 182

THIS LOCATION

FOR TOPOGRAPHY SEE F.B. 746, PAGES 180 TO 182

THIS LOCATION

FOR TOPOGRAPHY SEE F.B. 746, PAGES 180 TO 182

THIS LOCATION

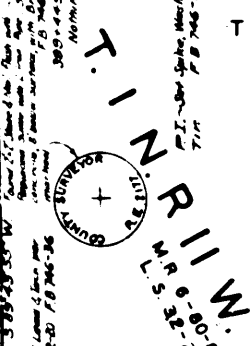
FOR TOPOGRAPHY SEE F.B. 746, PAGES 180 TO 182

THIS LOCATION

FOR TOPOGRAPHY SEE F.B. 746, PAGES 180 TO 182

THIS LOCATION

FOR TOPOGRAPHY SEE F.B. 746, PAGES 180 TO 182



LOT 3, SECTION 35,
T. 1 N. R. 11 W.

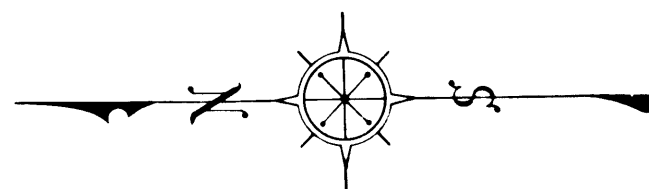
LOT 7, SECTION 35,
T. 1 N. R. 11 W.

LOT 8, SECTION 35,
T. 1 N. R. 11 W.

LOT 3, SECTION 2,
T. 1 S. R. 11 W.

SUBDIVISION OF THE RANCHO AZUSA DE DUARTE.

M.R. 6-40 & 41.
M.R. 6-80, 81 & 82.
C.S. B-1215.



GEIER TRACT.

TRACT.

ALTA VISTA AVENUE

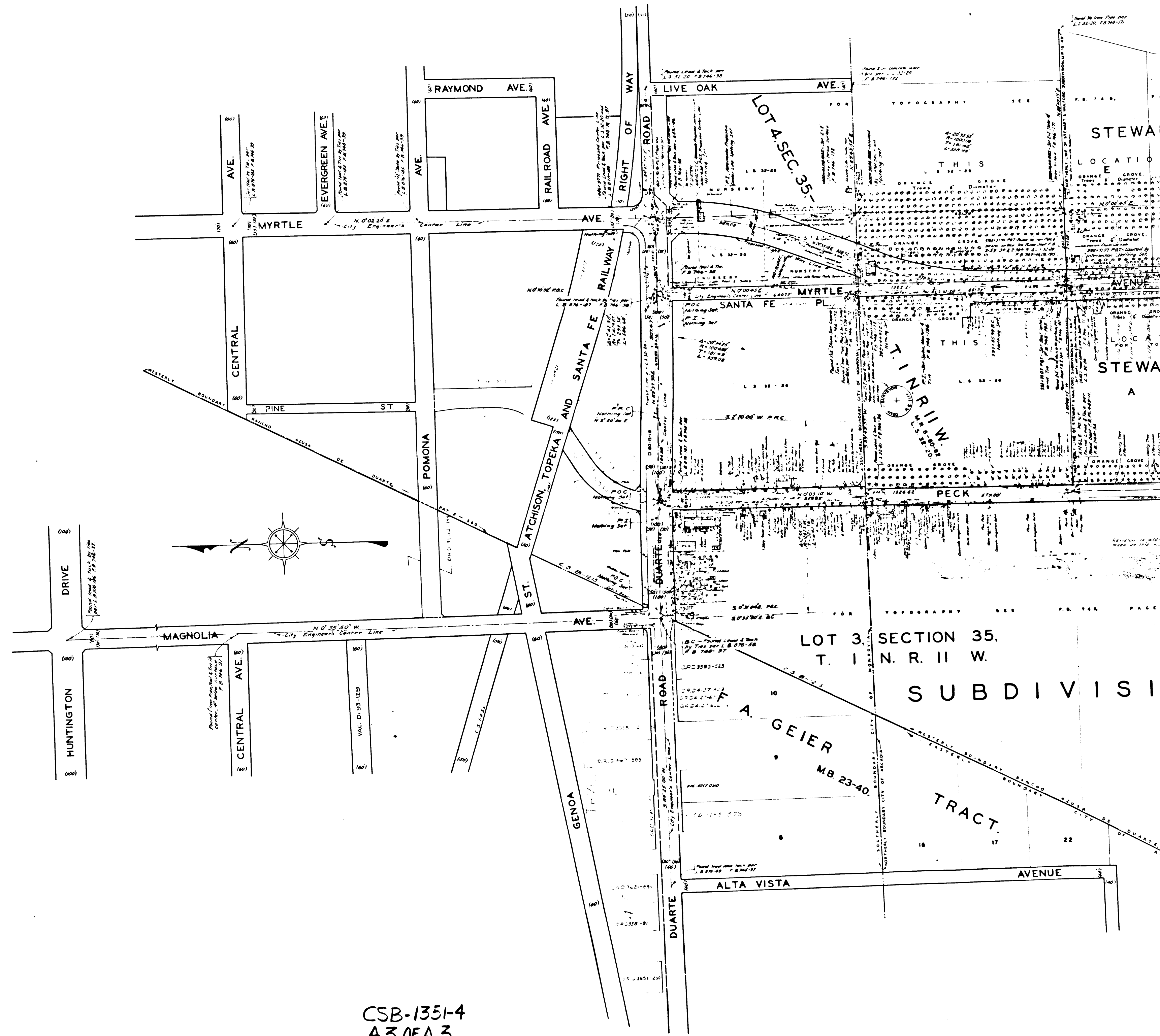
AVENUE

CSB-1351-4
A2 OF A3

LOT 38,
F. A. GEIER TRACT.
M.B. 23-40

TENTH AVE.

AVE.



CSB-1351-4
A30FA3