

REVISION OF
ELIZABETH LAKE - PINE CANYON ROAD
 FROM
 EAST LINE SECTION 22
 TO
 WEST LINE SECTION 7-T.6N-R.13W.

COUNTY SURVEYORS' MAP NO B-1352-1
 SHEET NO 1 OF 2 SHEETS
 SCALE: 1-INCH = 100 FT.

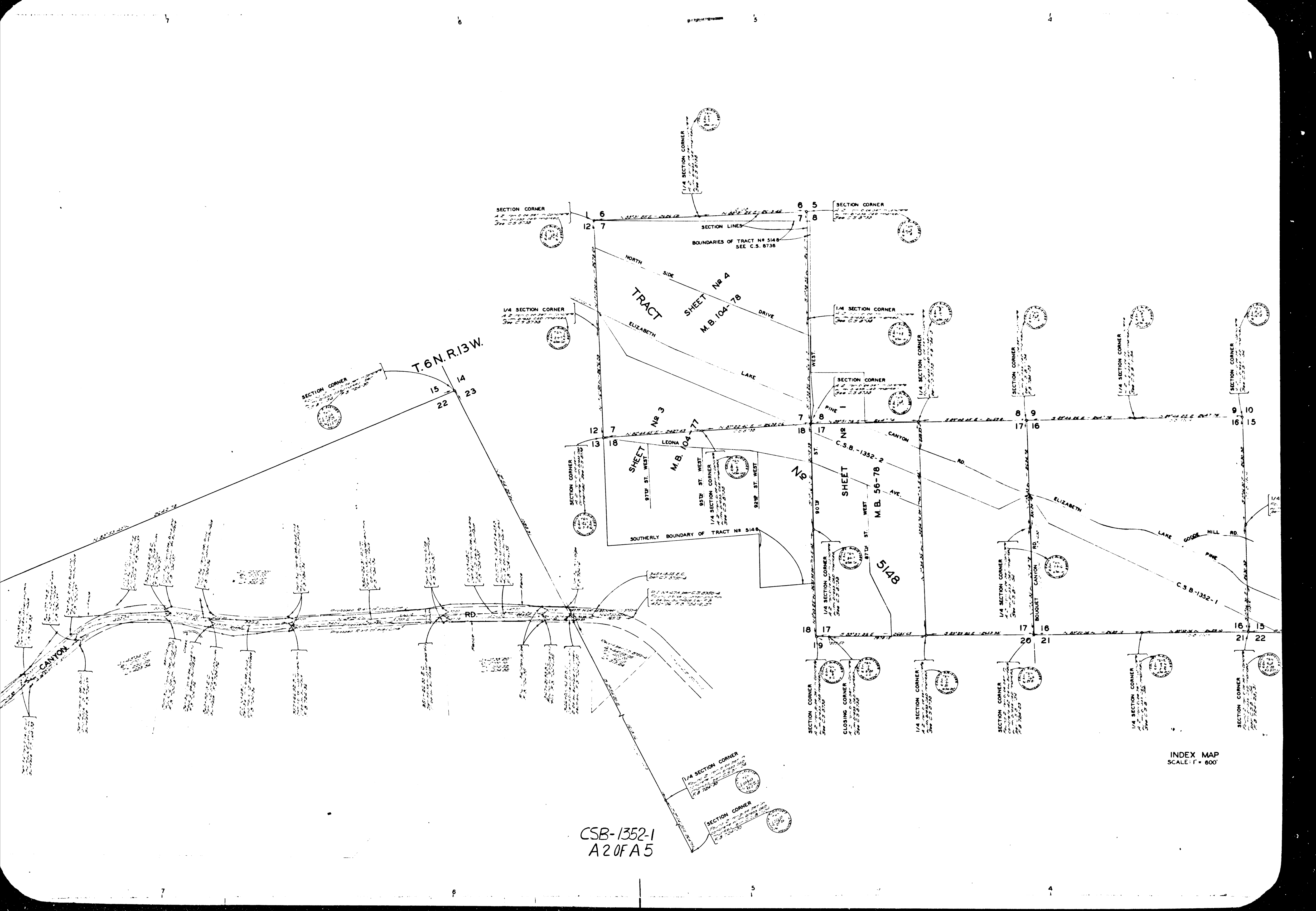
JOB NUMBER 7342
 ALFRED JONES-COUNTY SURVEYOR
 SURVEYED JULY 1937

BEARINGS ARE BASED ON TRUE BEARINGS
 TAKEN FROM U.S.G.S. TRIANGULATION
 SYSTEM PER C.S.B.-1134

F.B. 724-5-31
 FIELD WORK BY . . . F.C. HOWARD
 OFFICE WORK BY . . . K.R. McPHERSON
 CHECKED BY . . . K.R. McPHERSON

INDEX 61

FOR BLUE PRINTING
 WIDTH OF MAP = 36 INCHES
 LENGTH OF MAP = 16.5 FEET
 AREA/FOOT LENGTH = 3"
 TOTAL AREA OF MAP = 49.5'



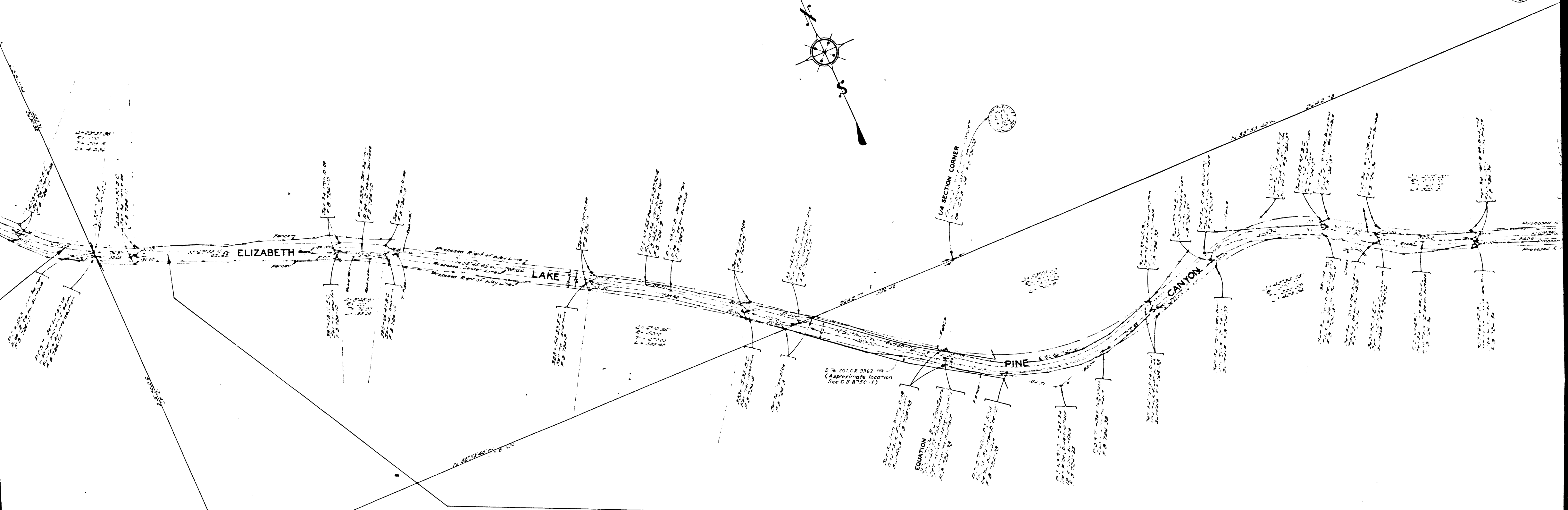
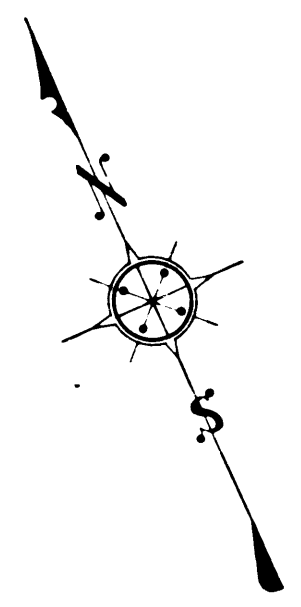
T.6 N. R.13 W.

CSB-1352-1
A20FA5

INDEX MAP
SCALE: F = 600

VIA SECTION CORNER

SECTION CORNER



D. 7% 201.0 R 9362.119
(Approximate location
See C.S. 8750-1)

16 15
21 22
10

SECTION CORNER
Found in concrete
at the base of
the 10' x 10' monument
at the 1000' station
on the 100' line

THIS ALIGNMENT SUPERSEDES THAT SHOWN ON C.S. 8750-4

CSB-1352-1
A30FA5



THIS ALIGNMENT SUPERSEDES THAT SHOWN ON C.S. 8750-1 & 2

CSB-1352-1
A40FA5

SECTION CO



T. 6 R. 13 W.

8 9
17 16

SECTION CORNER

FOR DETAIL OF THIS INTERSECTION
SEE MARGINAL MAP

MARGINAL MAP
SCALE: 1" = 50'

ELIZABETH

LAKE

PINE

CANYON

RD.

BOUQUET CANYON RD.

EQUATION

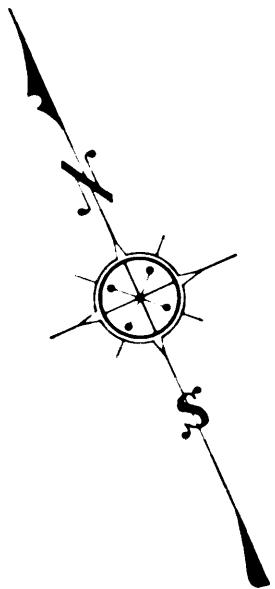
ANGLE POINT

ELIZABETH

LAKE

BOUQUET CANYON RD.

EQUATION



1/4 SECTION CORNER

THIS ALIGNMENT SUPERSEDES THAT

CSB-1332-1
A50FA5

L. 10113 60

L. 10113 60