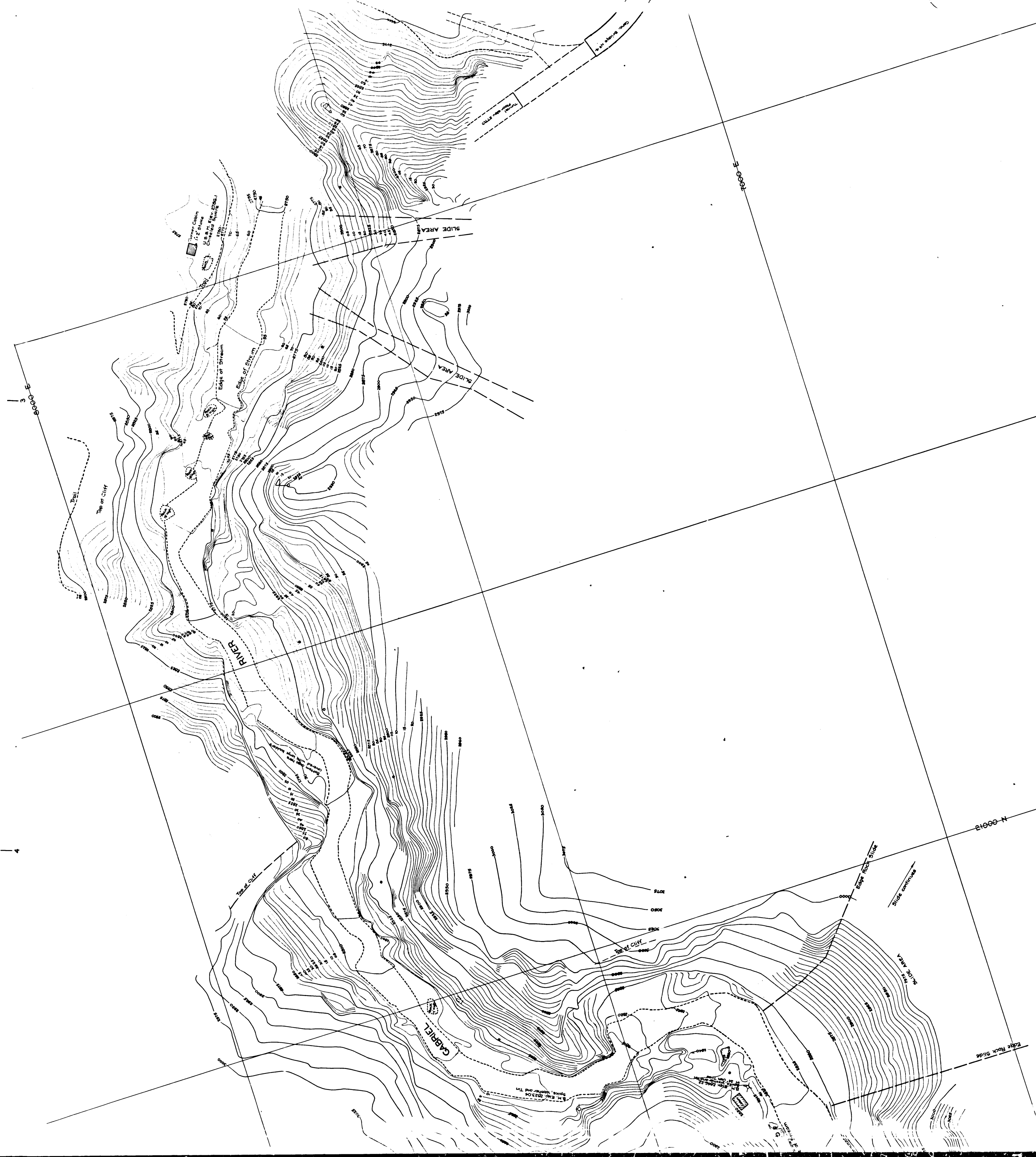
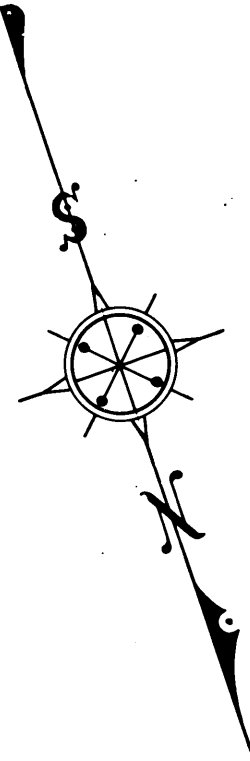


CSB 1368-1
A3 OF A5



CSB 1368-1
A4 OF A5



TOPOGRAPHIC MAP OF
CAMP BONITA - PRAIRIE FORK ROAD
 FROM
0.6 MILE NORTHEASTERLY OF DEVILS CANYON
 TO
VINCENT GULCH ROAD

COUNTY SURVEYORS MAP N8B-1366
 SHEET 1 OF 4 SHEETS
 SCALE 1 INCH = 50 FT.

JOB NUMBER 7948
 ALFRED JONES-COUNTY SURVEYOR
 SURVEYED-APRIL 1937 TO
 SURVEYED UNDER INSTRUCTIONS OF THE
 BOARD OF SUPERVISORS PER ORDER DATED
 MAY 20, 1929

PLANE TABLE SURVEY SHEETS
 G 147 G 148 G 149 G 150
 FIELD WORK BY... F. GREENWOOD
 T.M. WALSH
 T.H. MONCURE
 OFFICE WORK BY... M.D. DARLING
 H.L. MARTIN
 CHECKED BY... J.A. LYON
 C.L. KEAGLE

FOR ALIGNMENT SEE C.S. B-1369 SHEET 1
 FOR CROSS SECTIONS SEE C.S. B-1371 SHEETS 1 TO 4
 FOR PLAN AND PROFILE SEE C.S. B-1370 SHEET 1
 FOR MASS DIAGRAM SEE C.S. B-1370 SHEET 1
 DATUM-U.S.G.S.

CSB 1368-1
 A5 OF A5