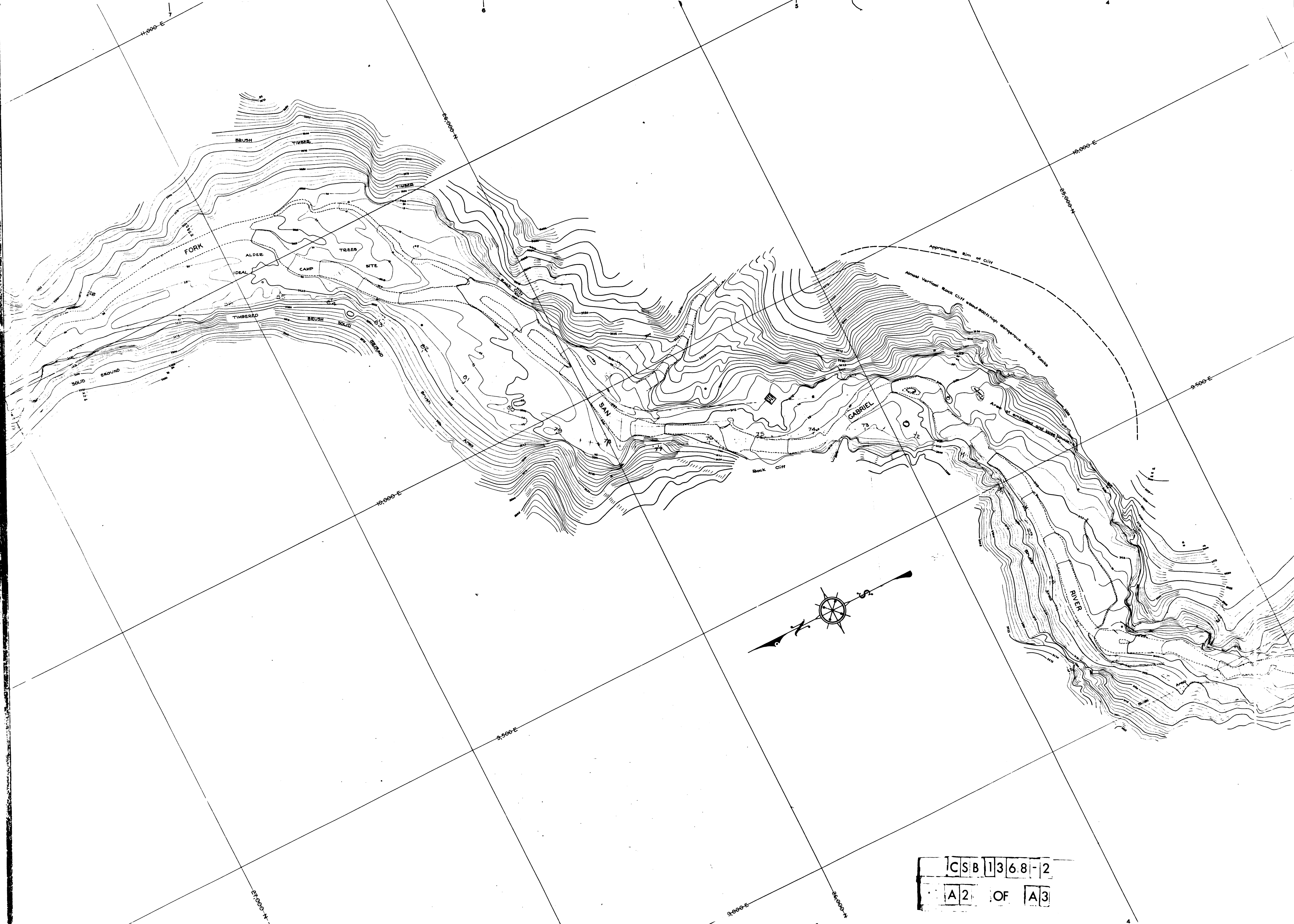


CONTINUED ON C.S. B-1366 SHEET 3

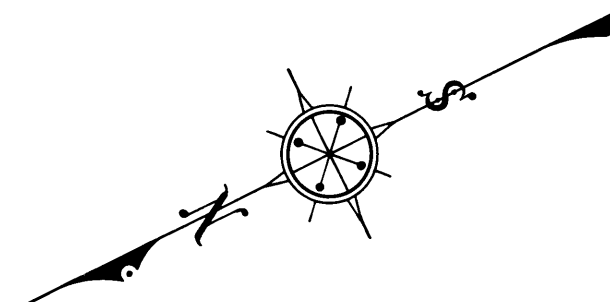
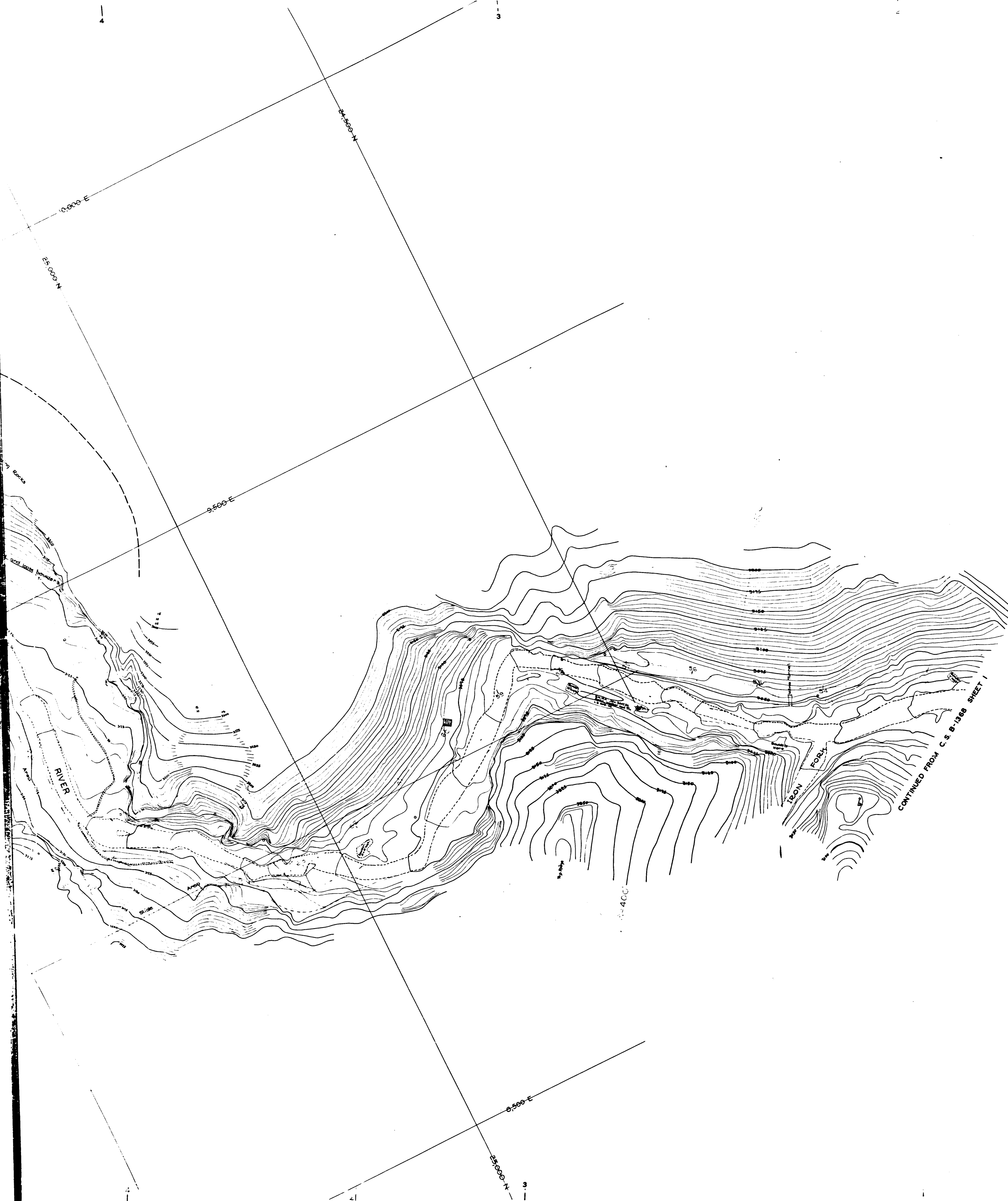


FOR ALIGNMENT SEE C.S. B-1369 SHEET 1  
 FOR CROSS SECTIONS SEE C.S. B-1371 SHEETS  
 FOR PLAN AND PROFILE SEE C.S. B-1370 SHEET  
 FOR MASS DIAGRAM SEE C.S. B-1370 SHEET

CSB	1368-2
A1	OF A3



CSB	1368	-2
A2	OF	A3



TOPOGRAPHIC MAP OF  
**CAMP BONITA- PRAIRIE FORK ROAD**  
 FROM  
 0.6 MILE NORTHEASTERLY OF DEVIL'S CANYON  
 TO  
**VINCENT GULCH ROAD**

COUNTY SURVEYORS MAP NO B-1368

SHEET NO 2 OF 4 SHEETS

SCALE - 1 INCH = 50 FT.

JOB NUMBER 7948

ALFRED JONES - COUNTY SURVEYOR  
 SURVEYED - APRIL, 1937 TO

SURVEYED UNDER INSTRUCTIONS OF THE  
 BOARD OF SUPERVISORS PER ORDER DATED  
 MAY 20, 1929

PLANE TABLE SURVEY SHEETS  
 G 150 G 151 G 152 G 153

FIELD WORK BY... F. GREENWOOD  
 ... T.M. WALSH  
 ... T.H. MONCURE

OFFICE WORK BY... M.D. DARLING  
 ... H.L. MARTIN

CHECKED BY... H.L. MARTIN  
 ... J.H. SMITH

FOR ALIGNMENT SEE C.S. B-1369 SHEET 1  
 FOR CROSS SECTIONS SEE C.S. B-1371 SHEETS TO  
 FOR PLAN AND PROFILE SEE C.S. B-1370 SHEET  
 FOR MASS DIAGRAM SEE C.S. B-1370 SHEET

DATUM - U.S.G.S.

CSB 1368-2  
 A3 OF A3