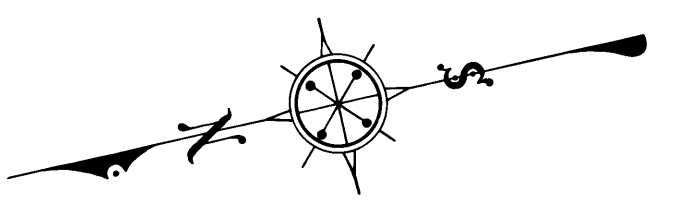


CONTINUED ON C.S. B-1368 SHEET 4

FOR ALIGNMENT SEE C.S. B-1369 SHEET
 FOR CROSS SECTIONS SEE C.S. B-1371 SHEETS 1D
 FOR PLAN AND PROFILE SEE C.S. B-1370 SHEET
 FOR MASS DIAGRAM SEE C.S. B-1370 SHEET

C	S	B	1	3	6	8	-	3
A1							OF	A4

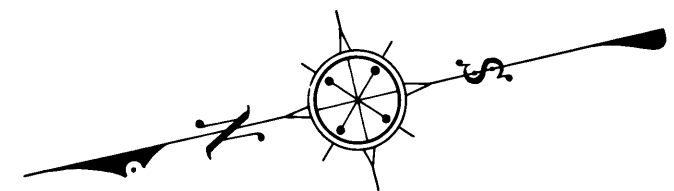


2 E. 12,000

2 E. 12,000

2 E. 12,000

2 E. 12,000



CSB 1368-3
A2 OF A4

10

9

8

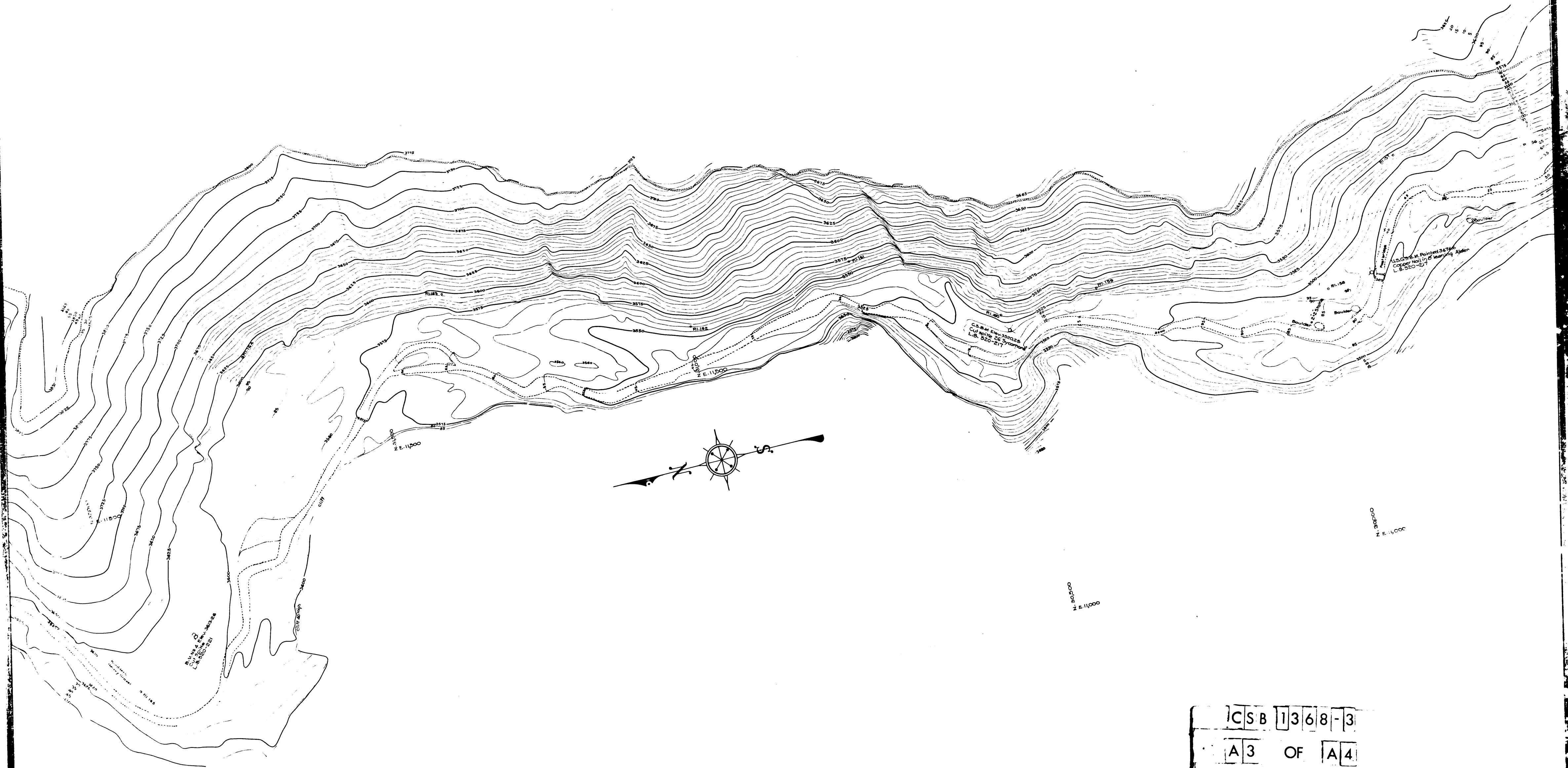
2

11

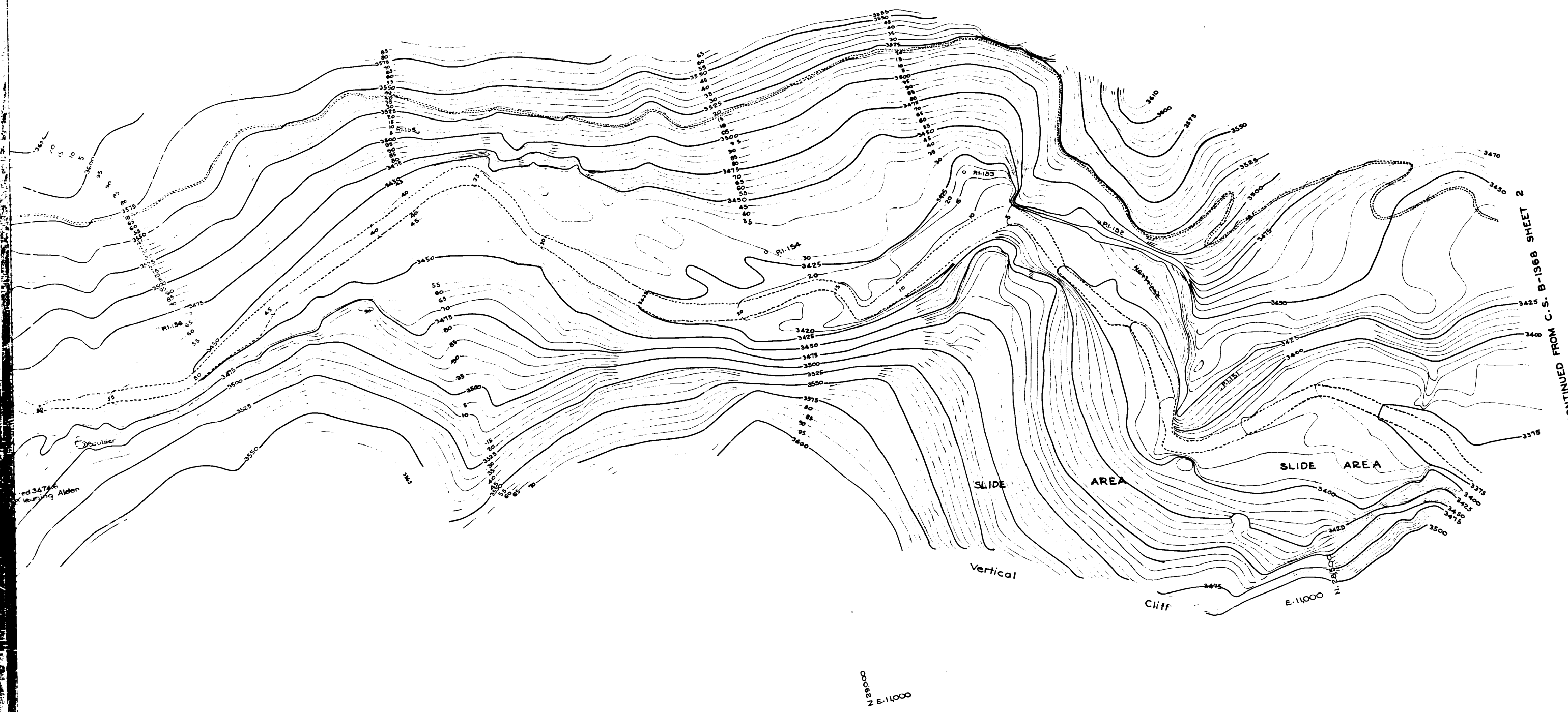
10

9

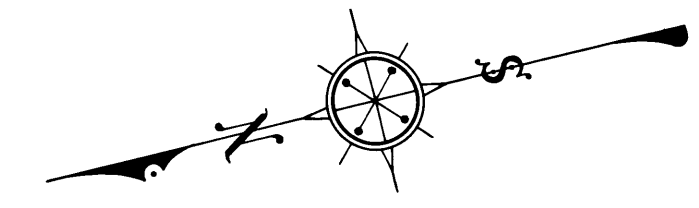
8



CSB 1368-3
A3 OF A4



CONTINUED FROM C.S. B-1368 SHEET 2



TOPOGRAPHIC MAP OF
CAMP BONITA-PRAIRIE FORK ROAD
 FROM
 0.6 MILE NORTHEASTERLY OF DEVIL'S CANYON
 TO
VINCENT GULCH ROAD

COUNTY SURVEYORS MAP NO B-1368
 SHEET NO 3 OF 4 SHEETS
 SCALE - 1 INCH = 50 FT.

JOB NUMBER 7948

ALFRED JONES-COUNTY SURVEYOR
 SURVEYED - APRIL, 1937 TO

SURVEYED UNDER INSTRUCTIONS OF THE
 BOARD OF SUPERVISORS PER ORDER DATED
 MAY 20, 1929

PLANE TABLE SURVEY SHEETS
 G154 G155 G156 G157 G158

FIELD WORK BY... F. GREENWOOD
 T.M. WALSH
 T.H. MONCURE

OFFICE WORK BY... C.J. TERRY
 H.L. MARTIN

CHECKED BY... L.K. FREEMAN
 J.H. SMITH
 M.D. DARLING

FOR ALIGNMENT SEE C.S. B-1369 SHEET
 FOR CROSS SECTIONS SEE C.S. B-1371 SHEETS TO
 FOR PLAN AND PROFILE SEE C.S. B-1370 SHEET
 FOR MASS DIAGRAM SEE C.S. B-1370 SHEET
 DATUM - U.S.G.S.

CSB 1368-3
 A4 OF A4

N 2 E 14000

N 2 E 11000