

TRACT
14

VICKSBURG AVE. (S)

13

12

11

10

9

8

7

No

M. B. 238-49,50

AIRPORT
BLVD. (1-4)

16

17

6

5

4

1236

3

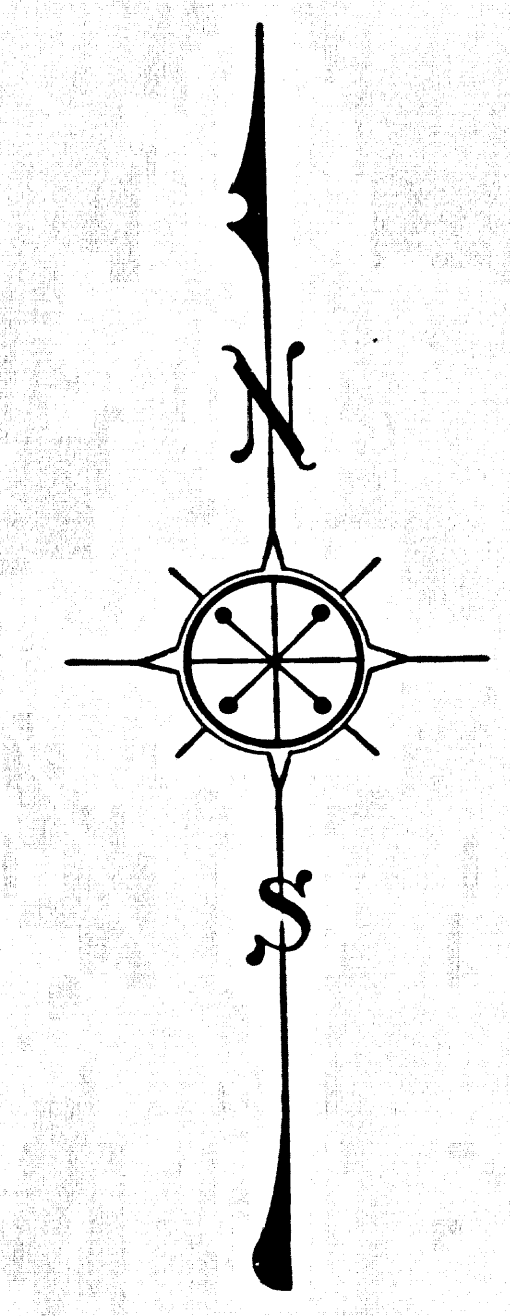
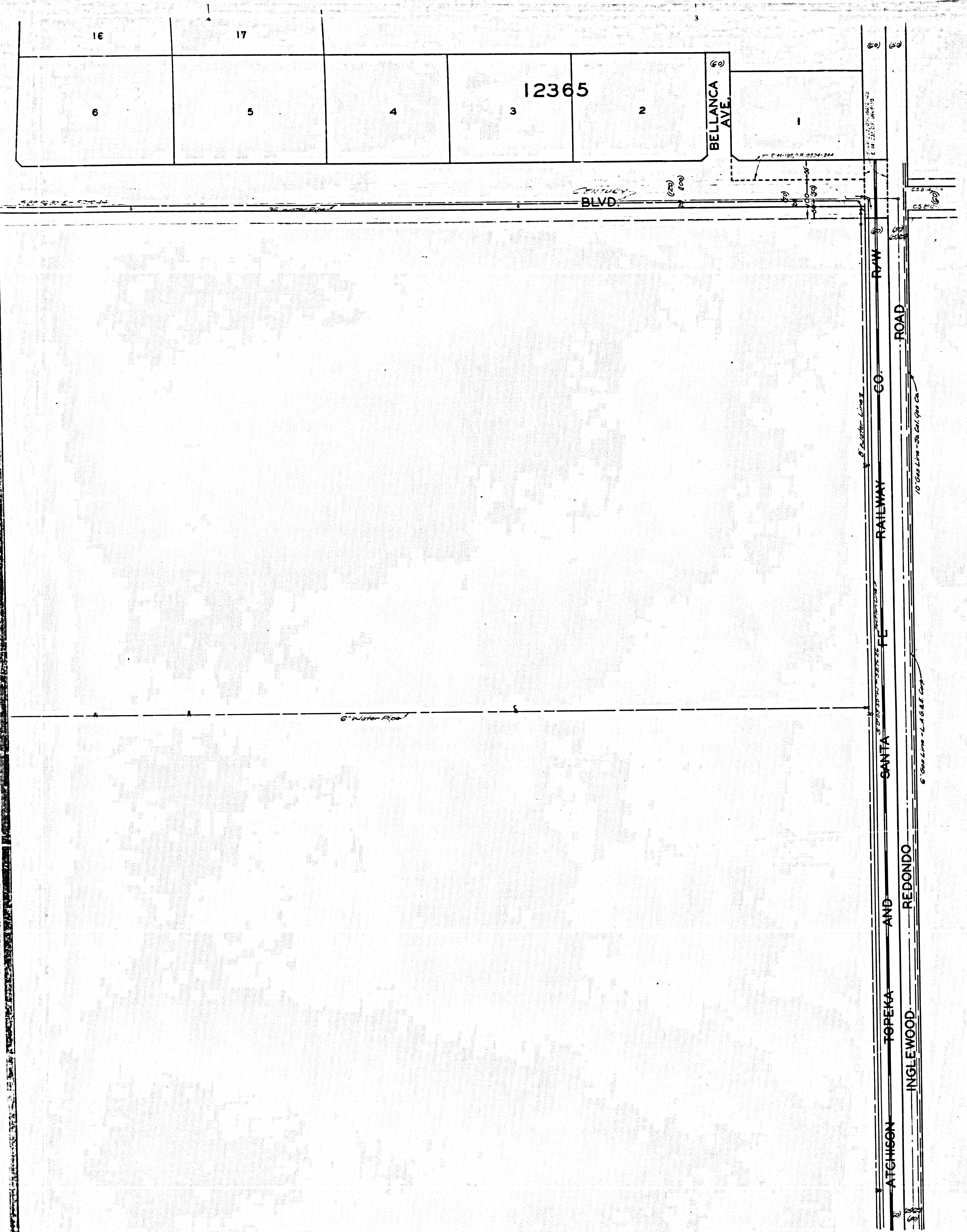
CENTURY

Proposed future right of way line per L.A. City Eng.

BLVD.

SEPULVEDA

CSB 1387-2
A1 OF A2



MAP SHOWING
LOCATION OF UTILITIES
 AT
LOS ANGELES INTERNATIONAL AIRPORT (ORD. 96520)
LOS ANGELES COUNTY CALIFORNIA
 PREPARED AS A PART OF THE LOS ANGELES
 COUNTY MAJOR DISASTER EMERGENCY PLAN

COUNTY SURVEYORS MAP NO B-1387
 SHEET NO 2 OF 2 SHEETS
 SCALE: 1 INCH = 100 FT.

JOB NUMBER 5209

ALFRED JONES - COUNTY SURVEYOR

COMPILED FROM RECORDS OF VARIOUS PUBLIC AND
 PRIVATE UTILITY AGENCIES AND COMPANIES UNDER
 INSTRUCTIONS OF THE BOARD OF SUPERVISORS PER
 ORDER DATED JULY 5, 1936 - ORDINANCE NO 2768

OFFICE WORK BY C.W.COX
 CHECKED BY K.R.MSPHERSON

INDEX 23

CSB 1387-2
 A2 OF A2

LEGEND

- WATER ————
- SEWER ————
- OIL & GASOLINE ————
- GAS ————
- TELEPHONE SURFACE ————
- TELEPHONE UNDERGROUND ————
- POWER SURFACE ————
- POWER UNDERGROUND ————