

TOPOGRAPHIC MAP OF
NAVAL ARMORY SITE
 IN
CHAVEZ RAVINE
 IN
LOS ANGELES COUNTY CALIFORNIA
 COUNTY SURVEYORS MAP N° B-1402
 SHEET N° 2 OF 3 SHEETS
 SCALE = 1 INCH = 20 FT.

JOB NUMBER 8214
 ALFRED JONES - COUNTY SURVEYOR
 SURVEYED MARCH 1938
 SURVEYED UNDER INSTRUCTIONS OF THE
 BOARD OF SUPERVISORS PER ORDER DATED
 FEBRUARY 8, 1938
 BEARINGS ARE BASED ON THE BEARING OF
 THE CENTER LINE OF COLLEGE STREET
 AS SHOWN ON C.S. 7680.
 PLANE TABLE SURVEY
 P. B. 155-1-22
 FIELD WORK BY... H.F. EVANS
 T.M. WALSH
 OFFICE WORK BY... C.J. TERRY
 R.R. PIERSON
 CHECKED BY... R.R. PIERSON
 A.A. ROESER
 INDEX 2

FOR PROPERTY LINE SURVEY SEE C.S. B-1402 SHEET 1

DATUM
 ELEVATIONS SHOWN HEREON ARE
 BASED ON THE 1924 U.S.C. & G.S.
 ADJUSTMENT OF U.S.G.S. BM 338 (U.S. 400)

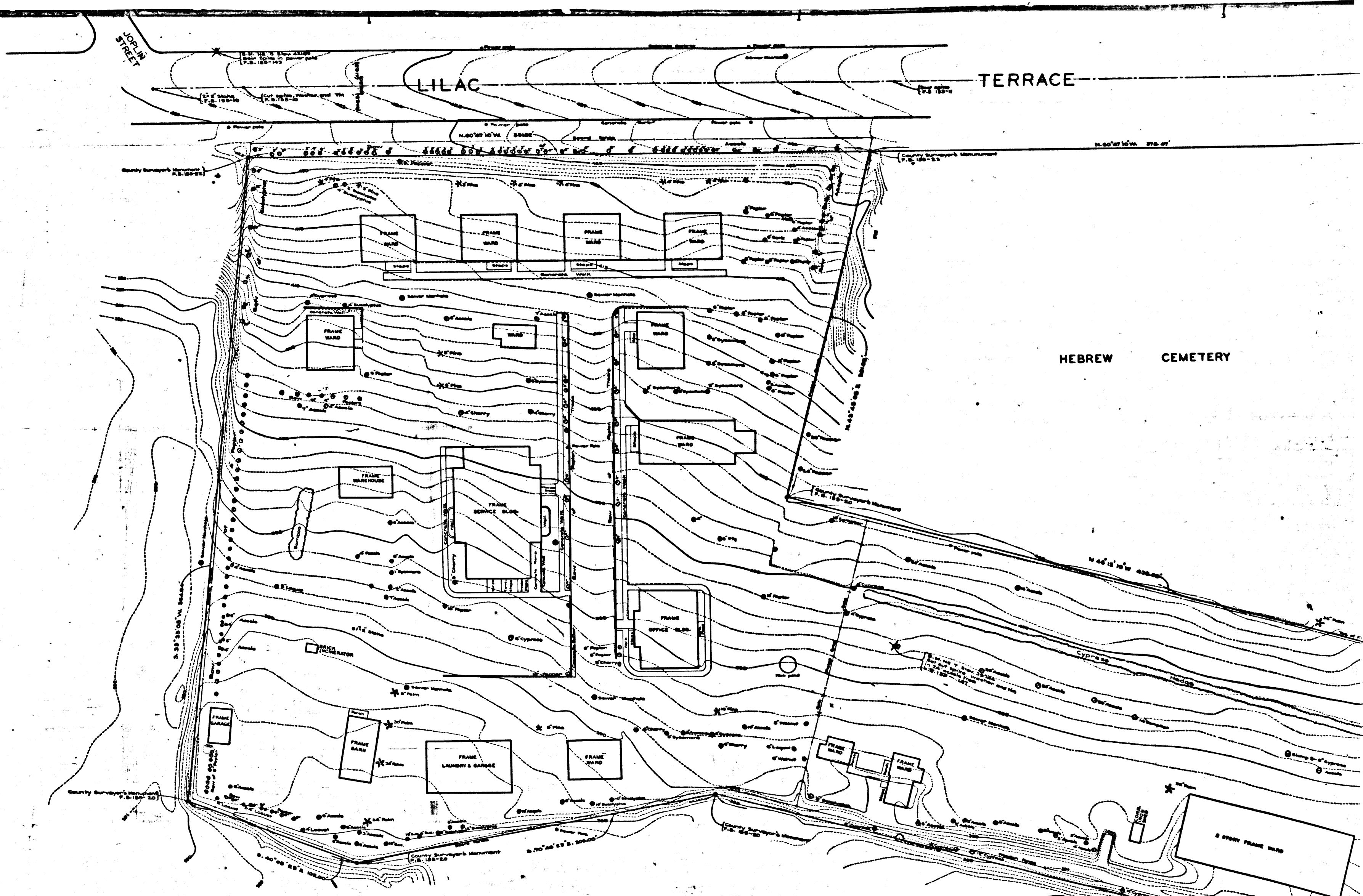
CSB-1402-2
 A1 OF A2

SHEET NO. 2 OF 3 SHEETS
 COUNTY SURVEYORS MAP NO. B-1402

SHEET NO. 2 OF 3 SHEETS
 COUNTY SURVEYORS MAP NO. B-1402

SHEET NO. 2 OF 3 SHEETS
COMPL. BRIDGE MAP NO. B-1402

SHEET NO. 2 OF 3 SHEETS
COMPL. BRIDGE MAP NO. B-1402



CSB-1402-2
A2 OF A2

CONTINUED ON C.S. B-1402 SHEET 3