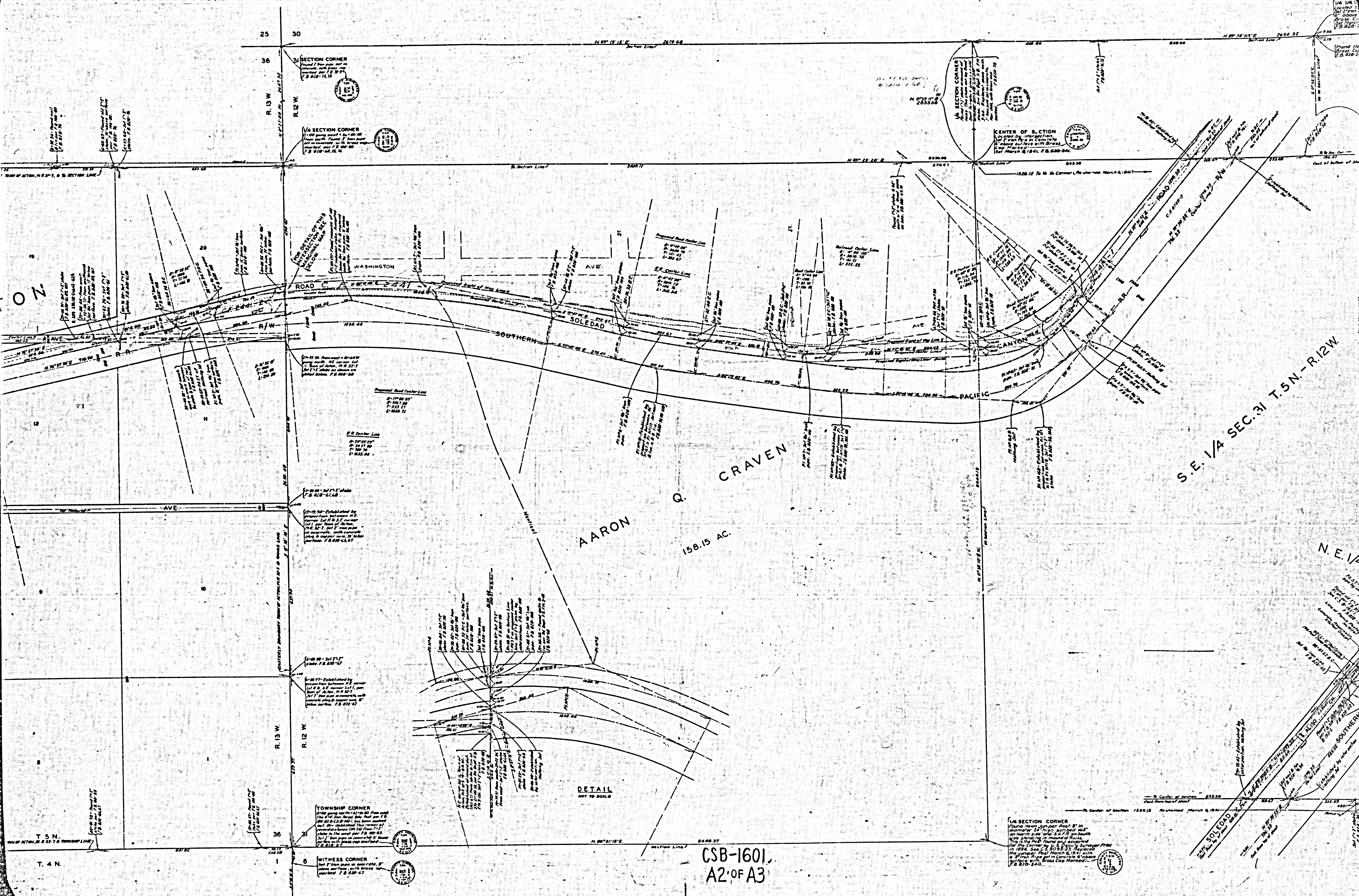


MAP OF
SOLEDAD CANYON ROAD
 FROM
 4 TH. STREET IN ACTON
 TO
 N. E. CORNER SECTION 31, T.5N.-R.12W. S. B.M.
 COUNTY SURVEYORS MAP NO B-1601.
 SCALE - 1 INCH = 100 FT.

JOB NUMBER 7323.
 ALFRED JONES - COUNTY SURVEYOR
 SURVEYED - FEB. & MAR. 1940.
 SURVEYED UNDER INSTRUCTIONS OF THE
 BOARD OF SUPERVISORS PER ORDER DATED
 APRIL 28, 1924.
 BEARINGS ARE BASED ON THE BEARING OF
 4TH. ST. ACTON, AS SHOWN ON C.S.B-145-1.
 F.B. 828-55-114
 FIELD WORK BY... F.C. HOWARD.
 OFFICE WORK BY... F.A. WOOD.
 CHECKED BY... H.R. M'PHERSON.
 INDEX 46-44
 FOR PROFILE & CROSS SECTIONS SEE C.S.B-1602

CSB-1601
 A1 OF A3



25

30

R. 13 W.

R. 12 W.

R. 13 W.

R. 12 W.

T. 5 N.

T. 4 N.

SECTION CORNER

SECTION CORNER

TOWNSHIP CORNER

WITNESS CORNER

SECTION CORNER

CENTER OF SECTION

SECTION CORNER

AARON CRAVEN
188.15 AC.

S.E. 1/4 SEC. 31 T. 5 N. - R. 12 W.

N.E. 1/4

DETAIL
NOT TO SCALE

CSB-1601,
A2 OF A3

SECTION CORNER
Found near corner post in
location 24' 11 1/2" north 165'
on north side and 307' 8" on south
side along the course of road.
This is the hole found and occupied
for the corner by Surveyor Phil
in 1898. See C.S. 5055-23. Replaced
the copper nail with a concrete
surface with brass cap marked
F.B. 975-240.

U.A. 144
located
50' from
above
corner
marked
F.B. 975-240

SECTION CORNER
Found near corner post in
location 24' 11 1/2" north 165'
on north side and 307' 8" on south
side along the course of road.
This is the hole found and occupied
for the corner by Surveyor Phil
in 1898. See C.S. 5055-23. Replaced
the copper nail with a concrete
surface with brass cap marked
F.B. 975-240.

SECTION CORNER
Found near corner post in
location 24' 11 1/2" north 165'
on north side and 307' 8" on south
side along the course of road.
This is the hole found and occupied
for the corner by Surveyor Phil
in 1898. See C.S. 5055-23. Replaced
the copper nail with a concrete
surface with brass cap marked
F.B. 975-240.

