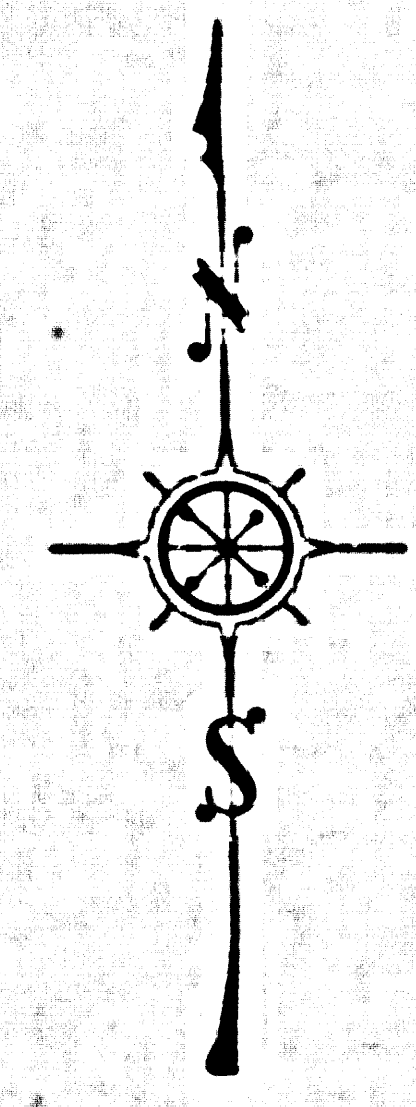
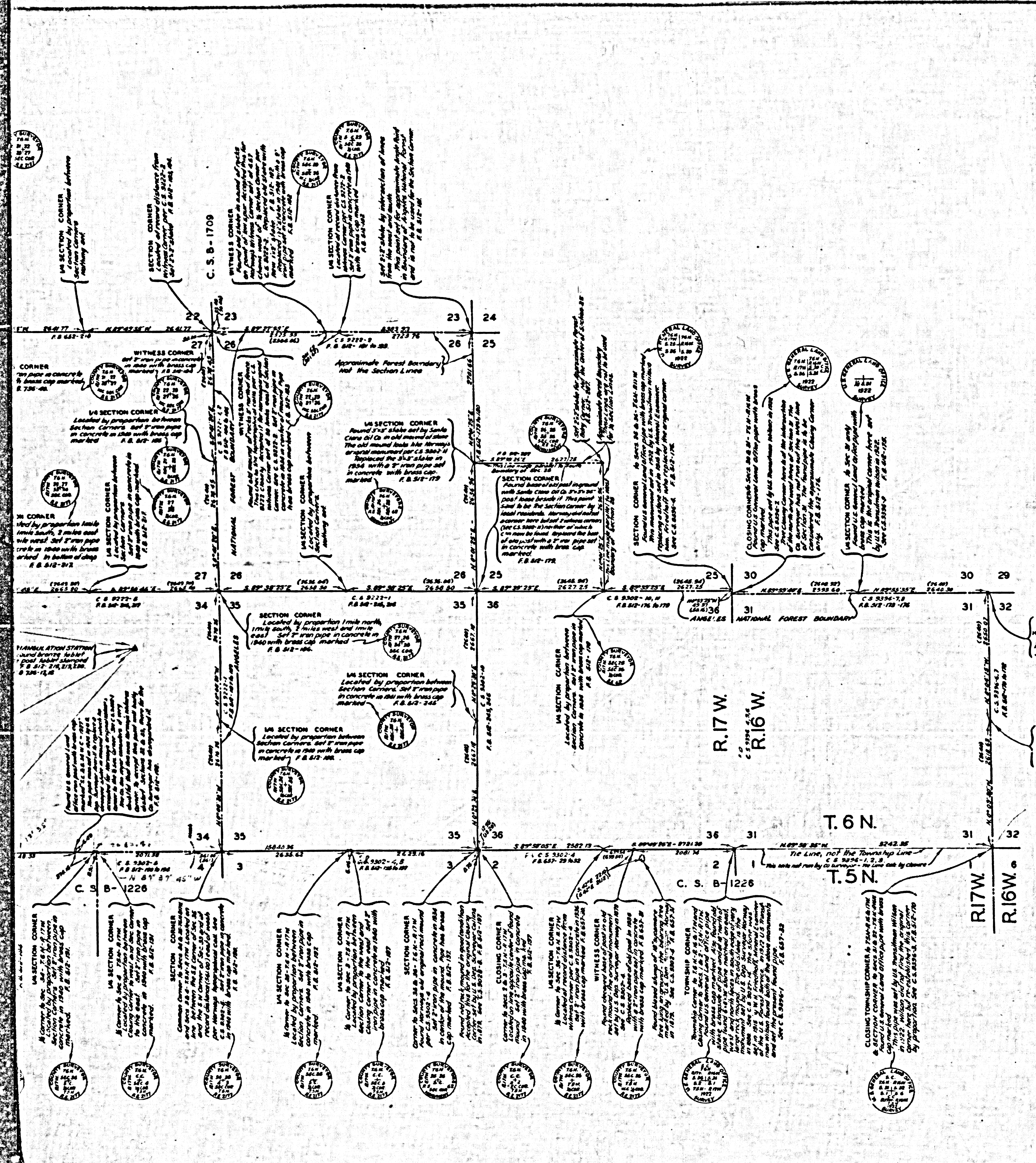


3091-B-DI 94M 29079RUC YTMUO3



COUNTY OF LOS ANGELES
 MAP OF
SECTION LINES AND CORNERS
 ESTABLISHED BY THE COUNTY SURVEYOR
 IN
PART OF T.6 N. R.16 & 17 W., S.B.M.

COUNTY SURVEYORS MAP NQ-B-1606
 SCALE: 1 INCH=800 FT.

JOB NUMBER 4999
C. E. ARNOLD-COUNTY SURVEYOR
 SURVEYED IN 1934, 1936 & 1940

BEARINGS ARE BASED ON TRUE BEARINGS
 FOR A MERIDIAN THROUGH U. S. G. S.
 TRIANGULATION STATION "TOWNSEND"

F. B. 512, 657 & 736
 FIELD WORK BY F. C. HOWARD
 OFFICE WORK BY K. R. M'PHERSON
 CHECKED BY K. R. M'PHERSON

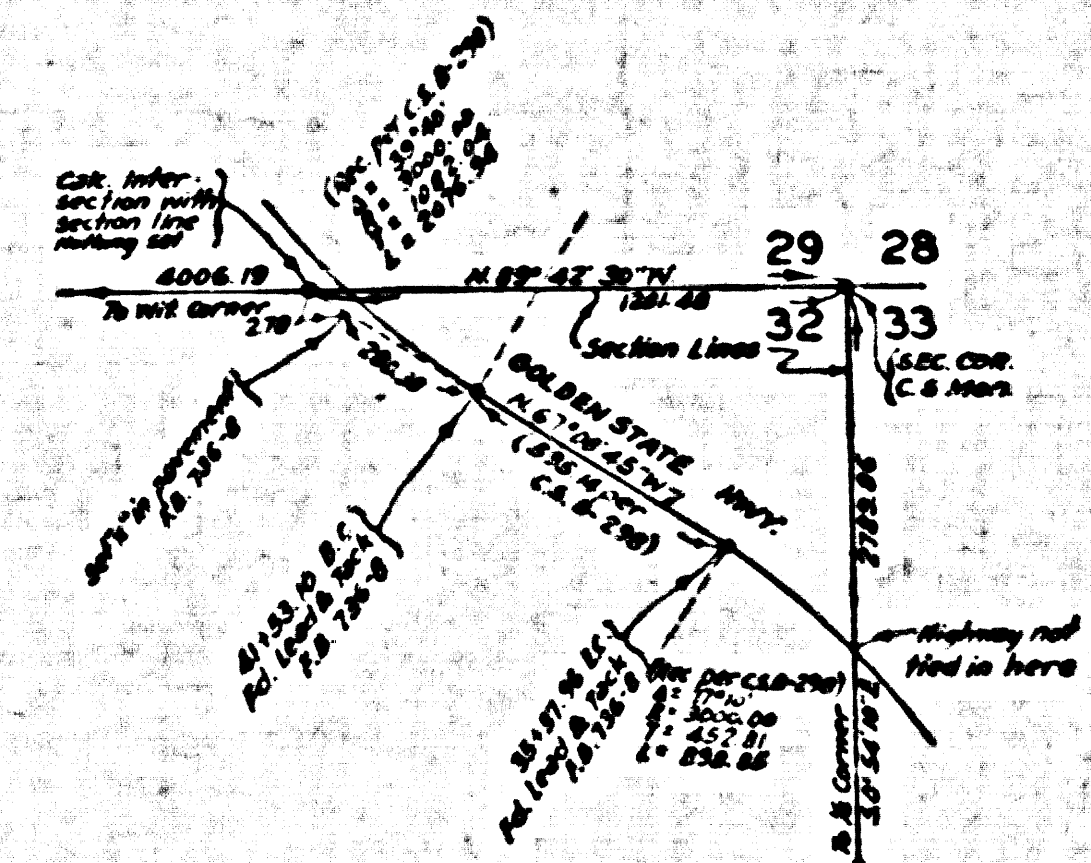
INDEX-17
 77

CSB-1606
 A1 OF A2

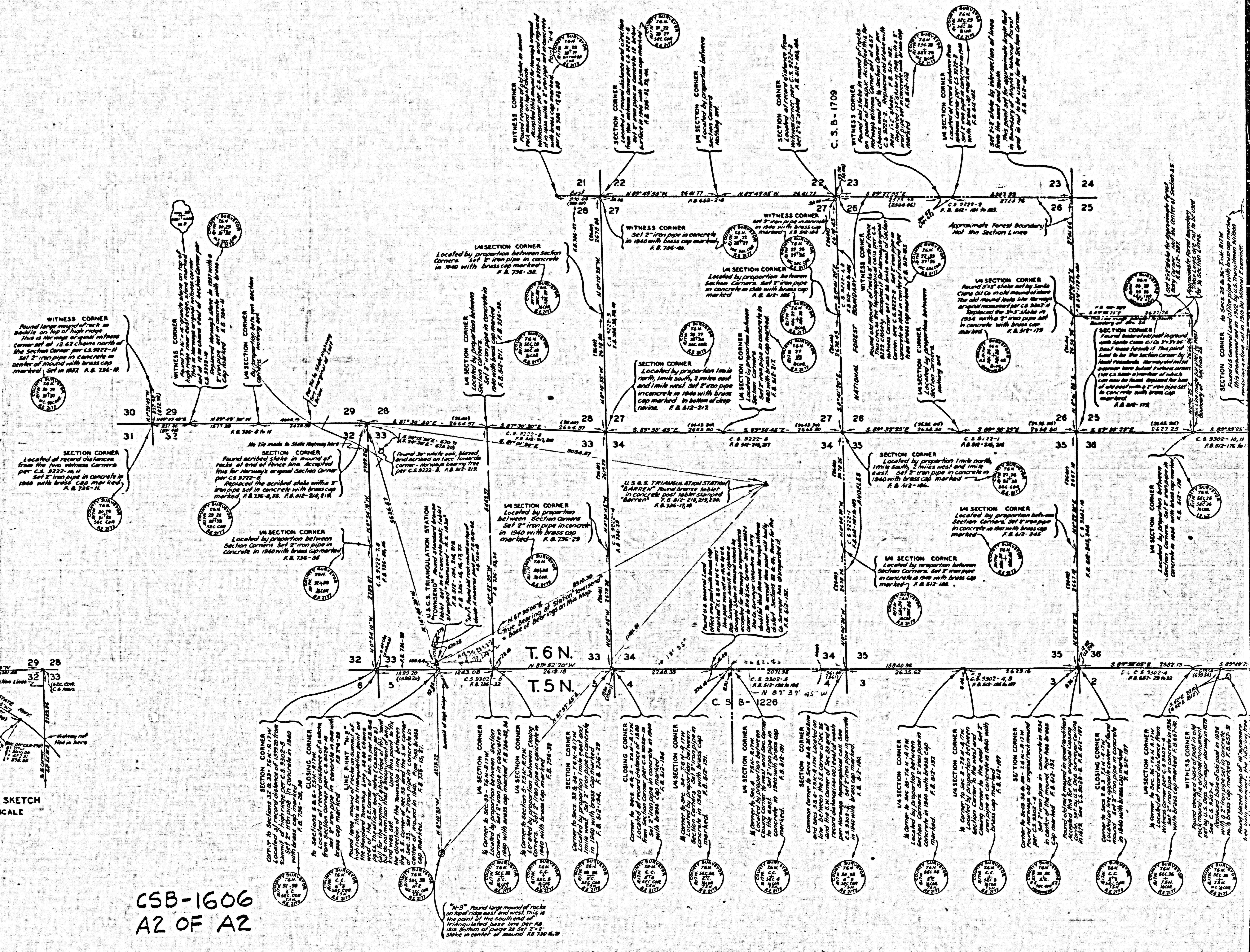
COUNTY SURVEYORS MAP NO B-1606

COMPL. BRANCOUS WYS MO B-1602

BOBI-S OM 4AM 2ROYVUE YTHUOC



CSB-1606
A2 OF A2



"N-3" Found large mound of rock on top ridge as shown on map. This is the point of the south end of triangulation base line per file. Station of page 2 of set 7-1-16.

SECTION CORNER
Located by proportion between
Section Corners 25 & 26
in concrete with brass cap
marked. F.B. 812-178

SECTION CORNER
Located by proportion between
Section Corners 25 & 26
in concrete with brass cap
marked. F.B. 812-178

SECTION CORNER
Located by proportion between
Section Corners 25 & 26
in concrete with brass cap
marked. F.B. 812-178

SECTION CORNER
Located by proportion between
Section Corners 25 & 26
in concrete with brass cap
marked. F.B. 812-178

SECTION CORNER
Located by proportion between
Section Corners 25 & 26
in concrete with brass cap
marked. F.B. 812-178

SECTION CORNER
Located by proportion between
Section Corners 25 & 26
in concrete with brass cap
marked. F.B. 812-178