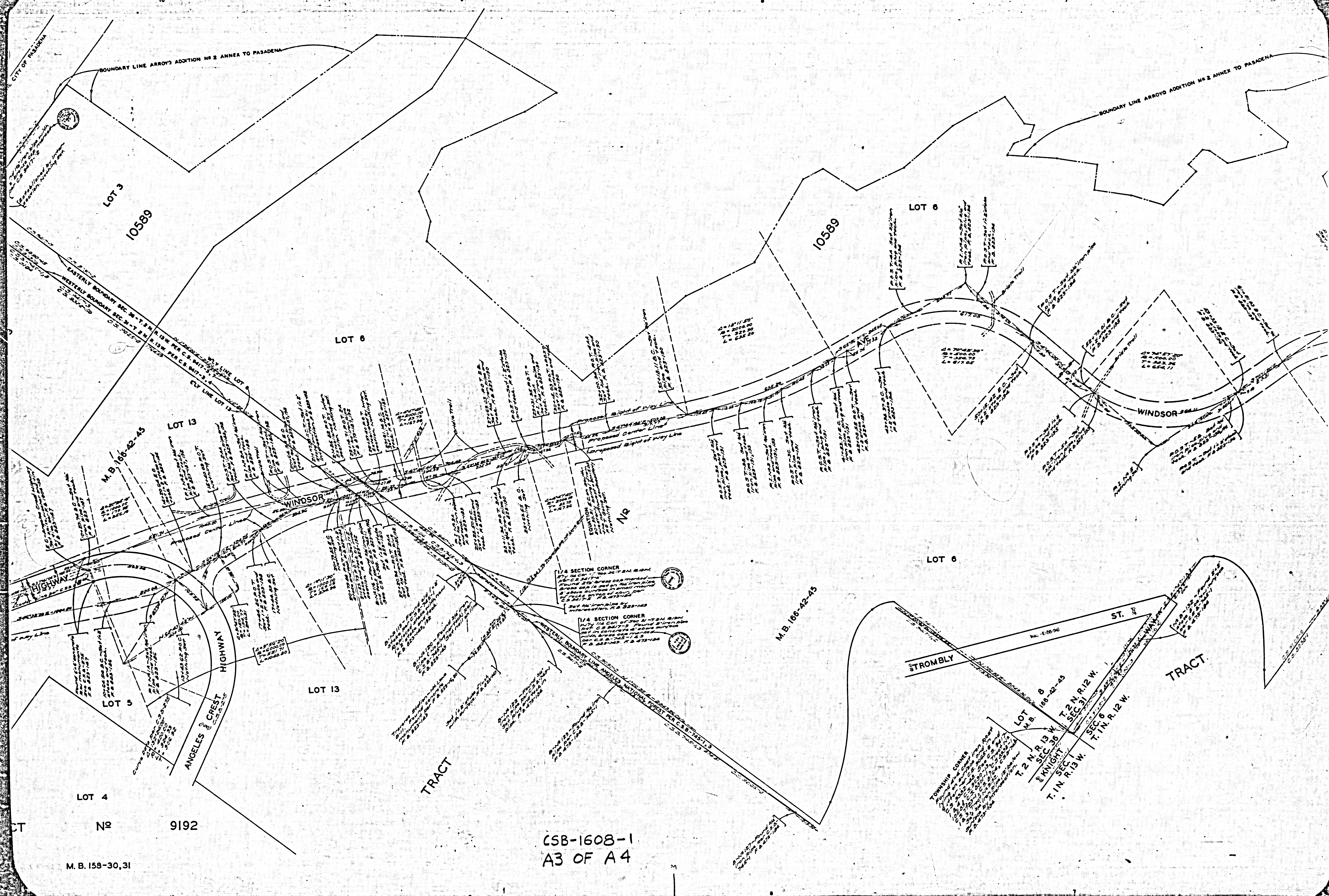


COUNTY OF LOS ANGELES  
 MAP OF  
**WINDSOR AVENUE**  
 FROM  
 ANGELES CREST HIGHWAY  
 TO  
 ARROYO BOULEVARD  
 COUNTY SURVEYORS MAP NO B-1608  
 SHEET NO 1 OF 2 SHEETS  
 SCALE: 1 INCH = 100 FT.

JOB NUMBER 8284 INDEX 50-16 51186  
 ALFRED JONES-COUNTY SURVEYOR  
 SURVEYED FEB. 1940-FEB. 1944  
 SURVEYED ON REQUEST OF THE REGIONAL  
 PLANNING COMMISSION UNDER RULE 21,  
 ORD. 929, BY LETTER DATED DEC. 1, 1939  
 AND AS AUTHORIZED BY THE BOARD OF  
 SUPERVISORS IN THEIR ORDER OF JUNE 1, 1938  
 BEARINGS ARE BASED ON THE LOS ANGELES  
 COUNTY COORDINATE SYSTEM, LAMBERT GND,  
 CENTRAL MERIDIAN 118° 20' WEST  
 SEC. 9, 9423  
 F. B. 923-1-275  
 FIELD WORK BY . . . . . W. A. MILLER  
 . . . . . W. E. BRADEN  
 . . . . . F. J. McNEAL  
 . . . . . L. S. HAMMOND  
 OFFICE WORK BY . . . . . C. W. COX  
 CHECKED BY . . . . . D. M. FINLEY

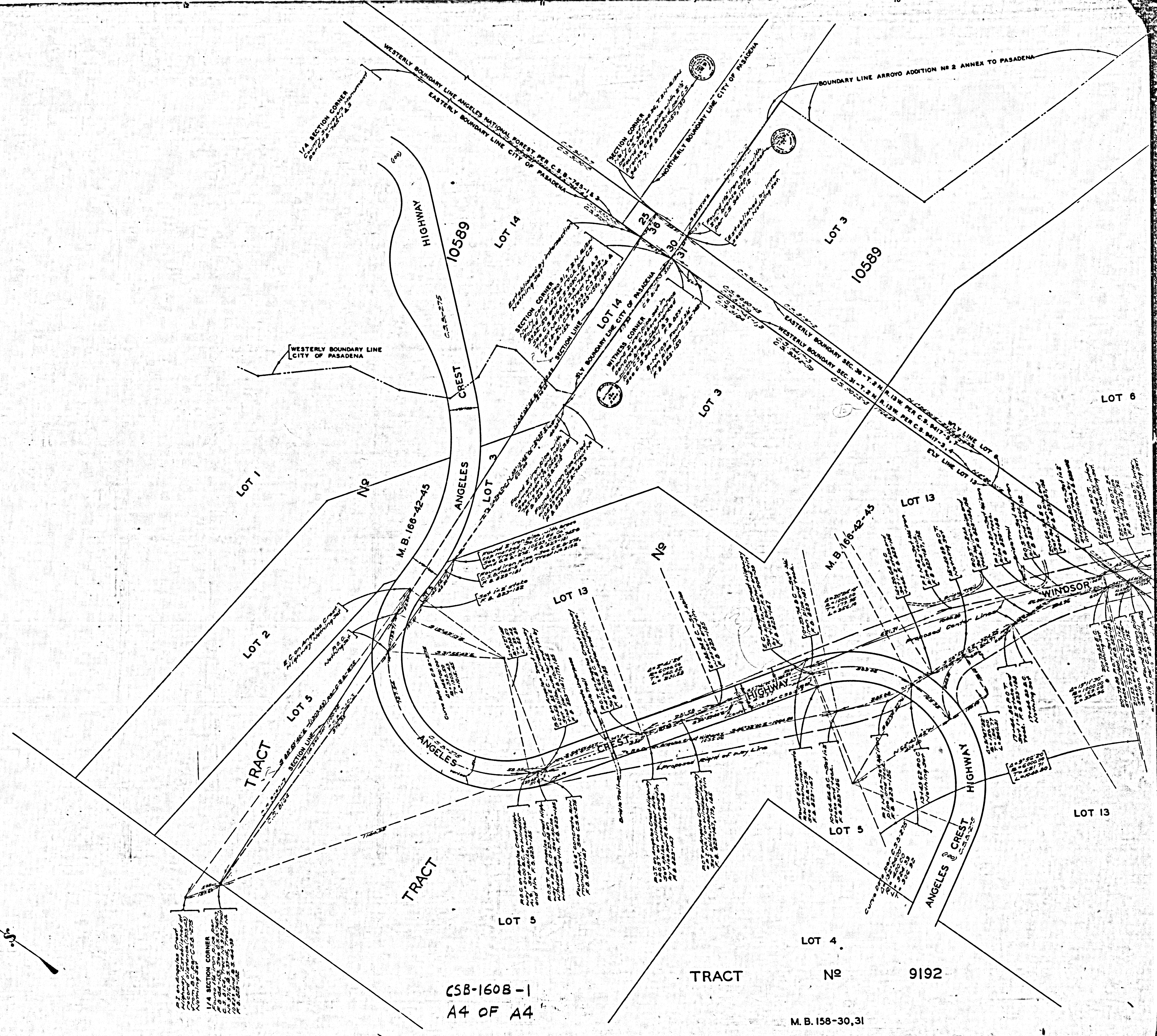
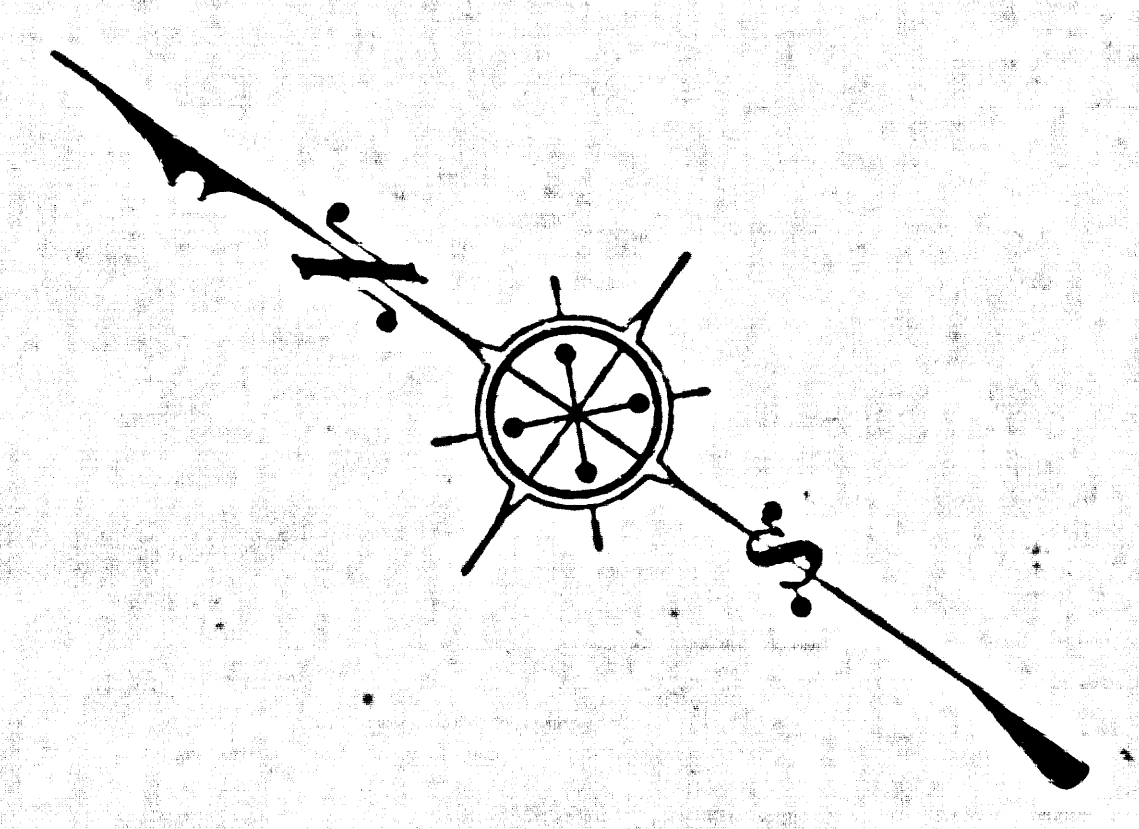






CONV. SURVEYORS M.B. 158-30,31

SHEET NO. 1 OF 2 SHEETS  
CONV. SURVEYORS M.B. 158-30,31



CSB-1608-1  
A4 OF A4

M.B. 158-30,31



